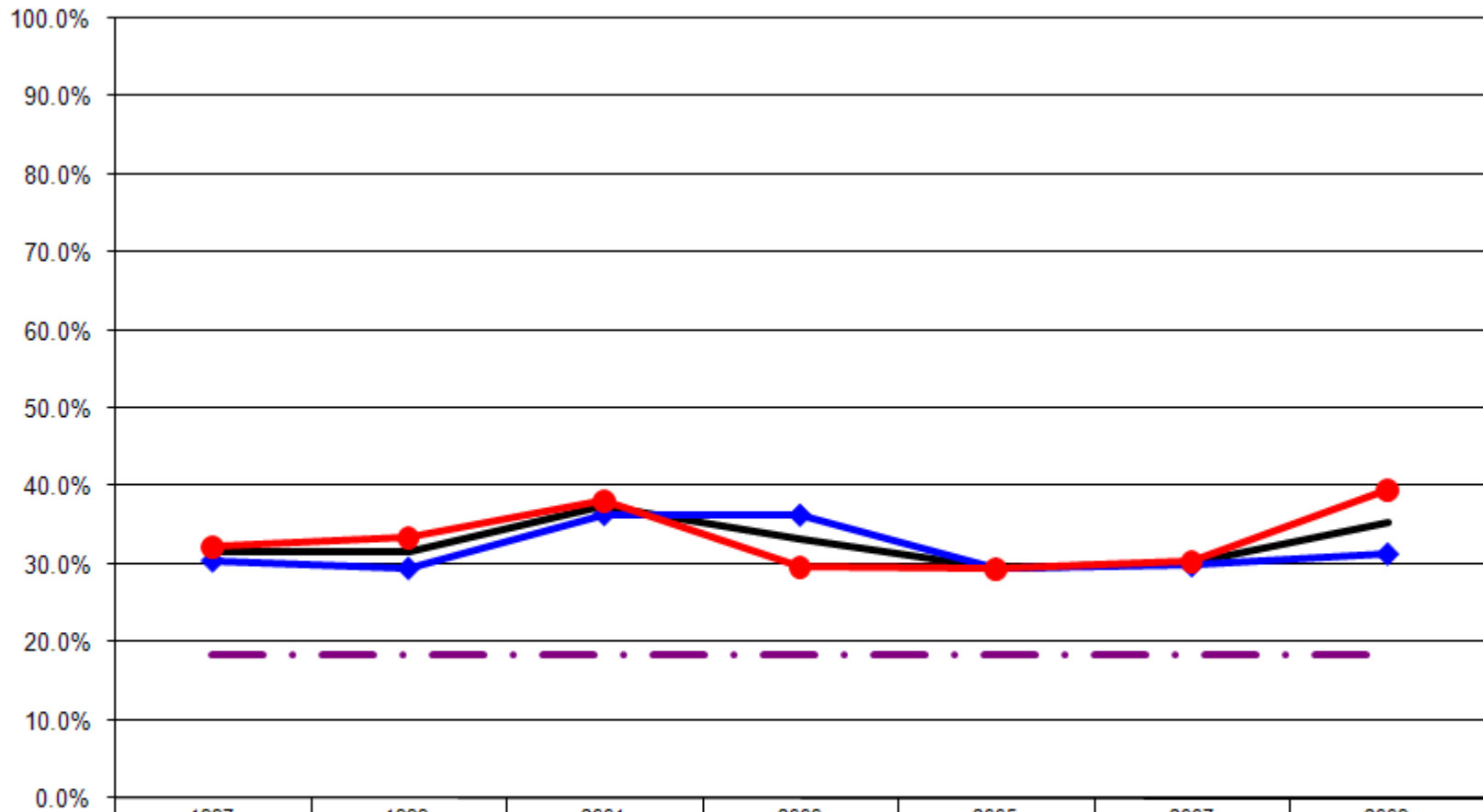


Ages: 18-64 Survey Population Current Smoker Rate

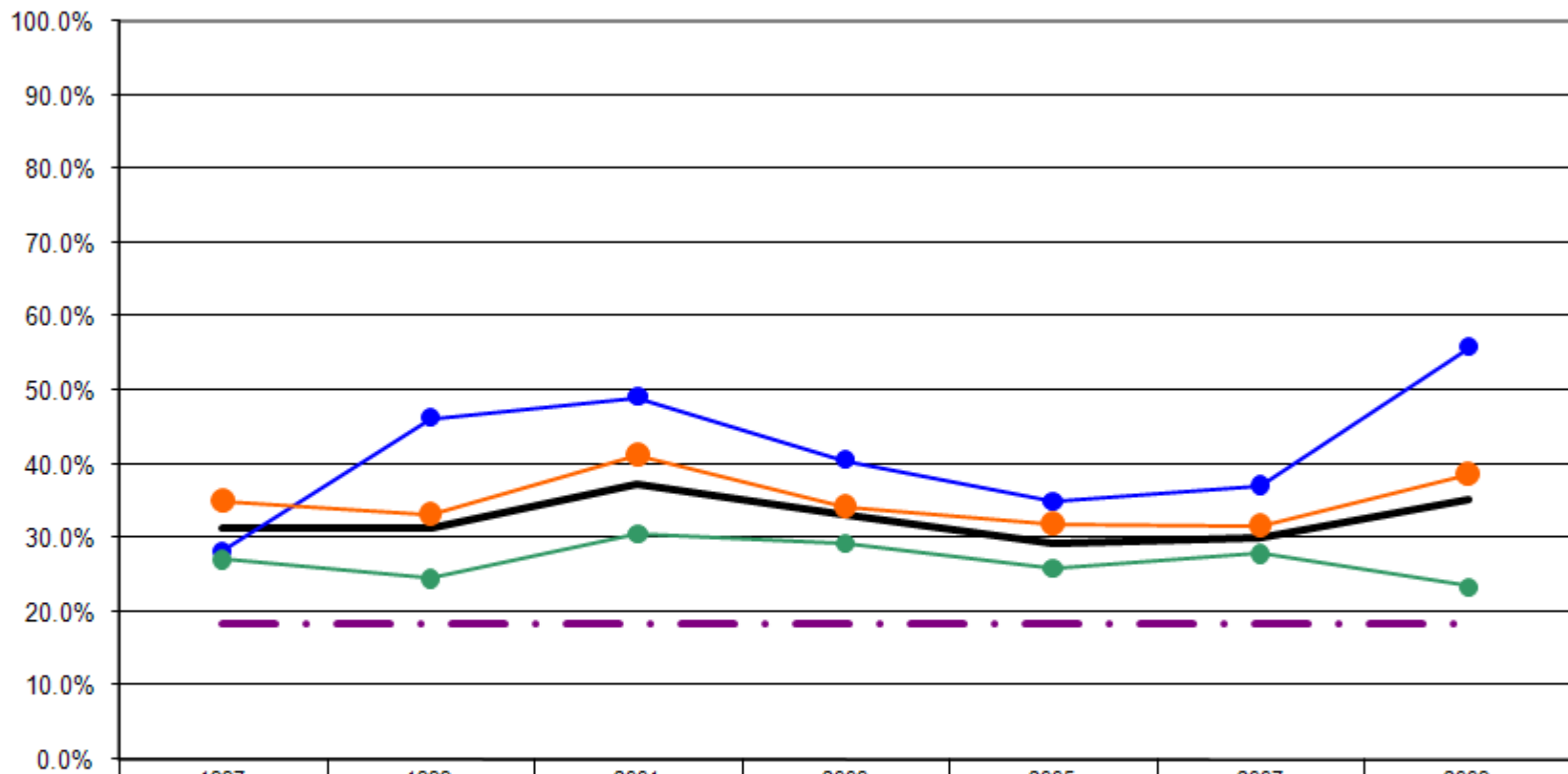
Current Smoker Rate By Gender (Ages 18-64)



	1997	1999	2001	2003	2005	2007	2009
— Total	31.5%	31.5%	37.4%	33.2%	29.4%	30.1%	35.3%
—◆— Male	30.5%	29.6%	36.4%	36.3%	29.4%	29.9%	31.4%
—●— Female	32.2%	33.3%	38.2%	29.7%	29.4%	30.3%	39.6%
- - - - US Total Rate*							18.3%

*Source: 2008 CDC BRFSS

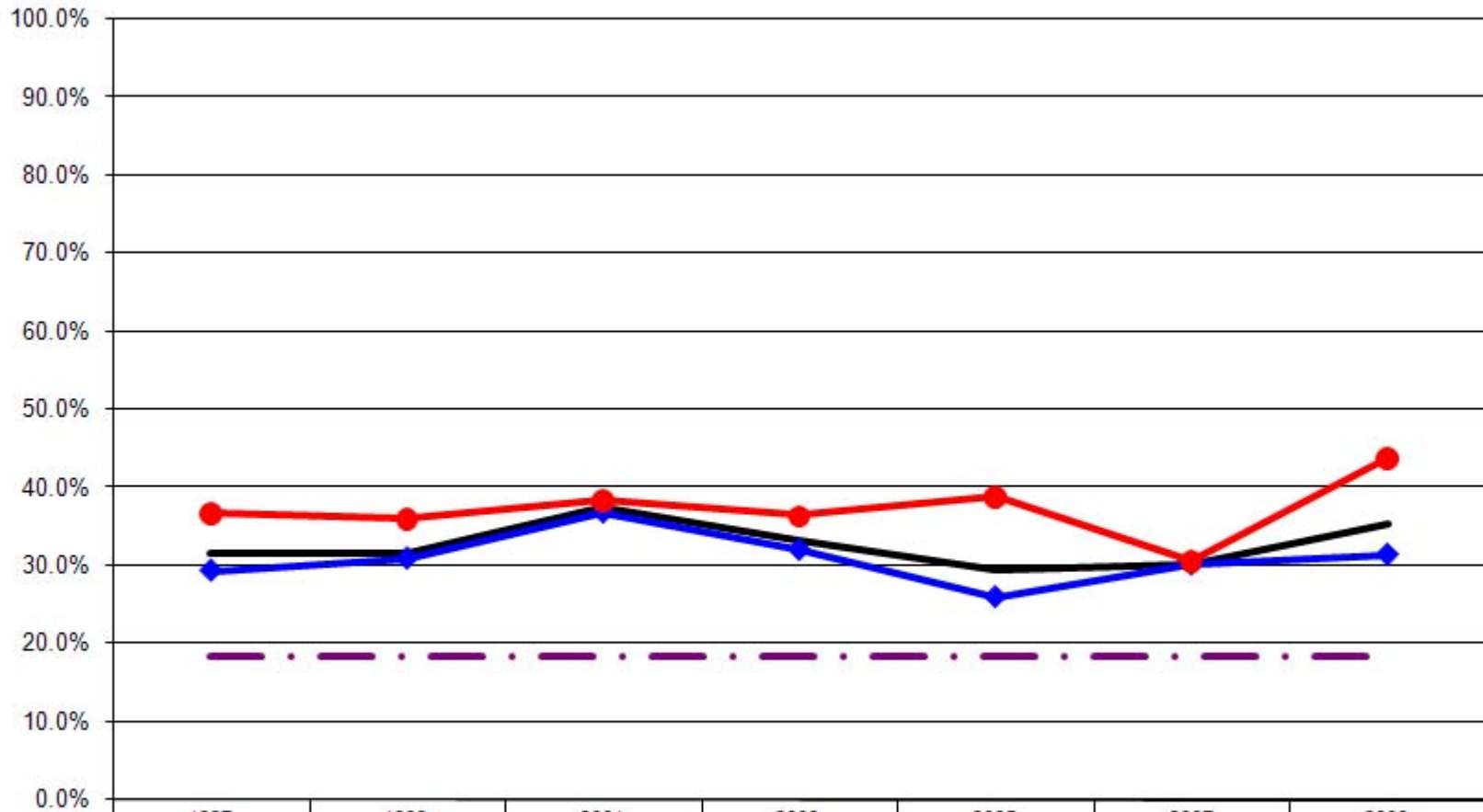
Current Smoker Rate By Age (Ages 18-64)



	1997	1999	2001	2003	2005	2007	2009
— Total	31.5%	31.5%	37.4%	33.2%	29.4%	30.1%	35.3%
—● 18-24	28.3%	46.3%	49.1%	40.6%	35.0%	37.1%	55.8%
—● 25-44	35.1%	33.3%	41.2%	34.3%	31.8%	31.7%	38.7%
—● 45-64	27.1%	24.5%	30.5%	29.2%	25.9%	27.9%	23.5%
- - - US Total Rate*							18.3%

*Source: 2008 CDC BRFSS

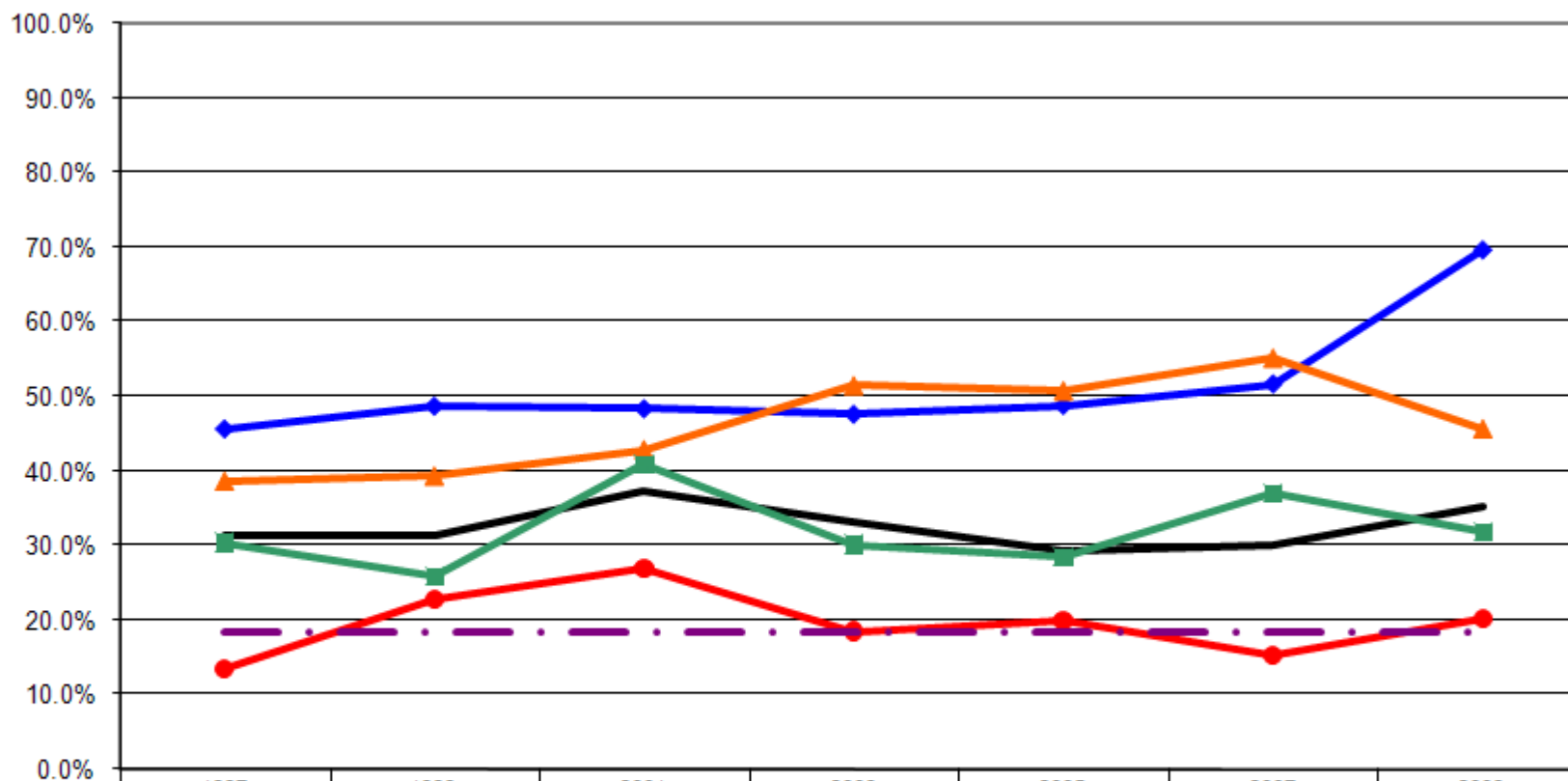
Current Smoker Rate By Employment Status (Ages 18-64)



	1997	1999	2001	2003	2005	2007	2009
— Total	31.5%	31.5%	37.4%	33.2%	29.4%	30.1%	35.3%
—◆— Employed	29.4%	31.0%	36.9%	32.1%	26.1%	30.2%	31.5%
—●— Not Employed	36.7%	35.9%	38.4%	36.4%	38.9%	30.6%	43.8%
- · - · - US Total Rate*							18.3%

*Source: 2008 CDC BRFSS

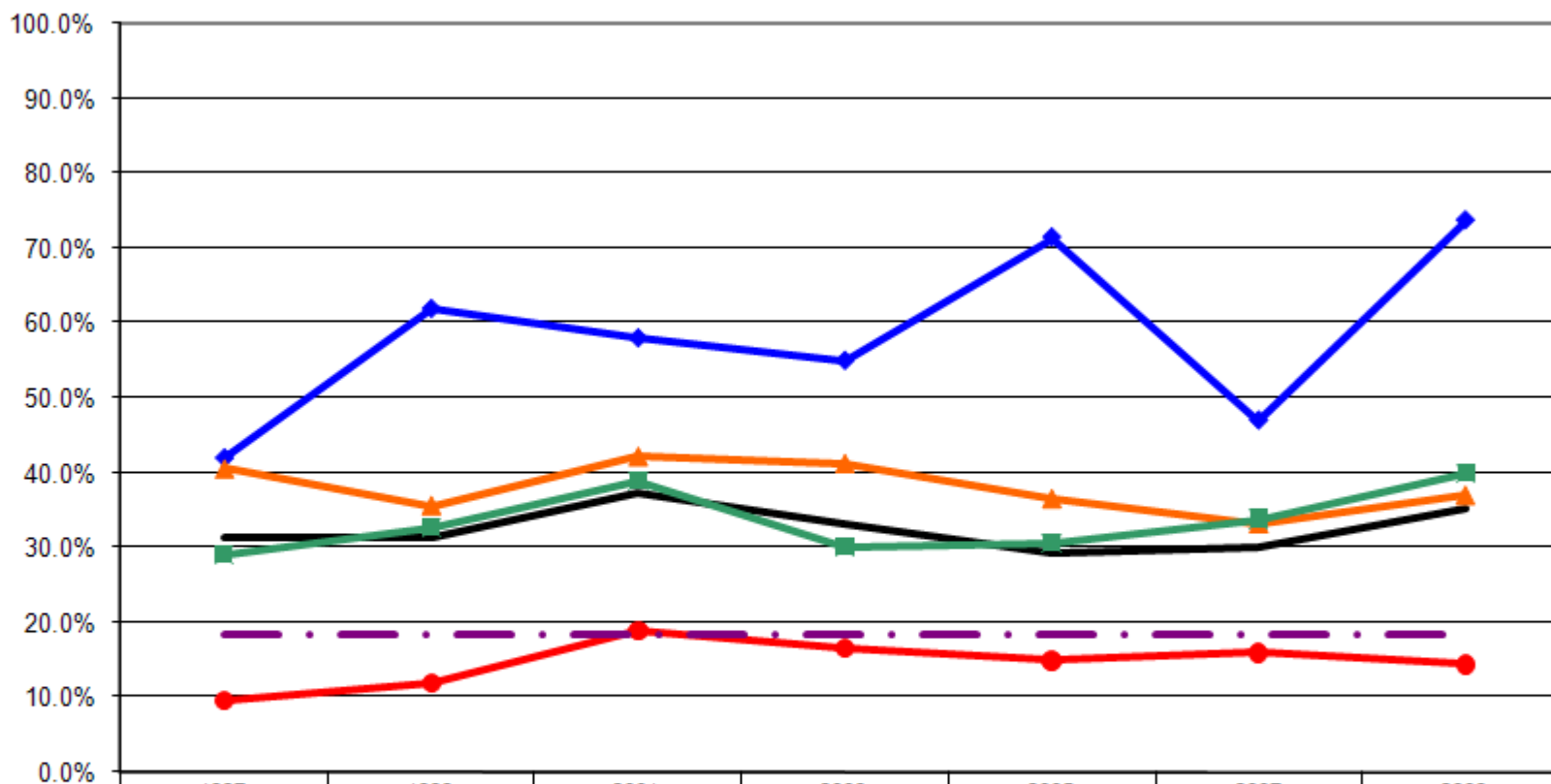
Current Smoker Rate By Income (Ages 18-64)



	1997	1999	2001	2003	2005	2007	2009
— Total	31.5%	31.5%	37.4%	33.2%	29.4%	30.1%	35.3%
—◆— <\$15K	45.7%	48.8%	48.4%	47.7%	48.9%	51.8%	69.8%
—▲— \$15-25K	38.6%	39.3%	42.9%	51.4%	50.7%	55.1%	45.7%
—■— \$25-50K	30.4%	25.9%	40.9%	30.1%	28.5%	37.0%	31.9%
—●— \$50K+	13.5%	22.7%	26.9%	18.5%	19.9%	15.3%	20.3%
-.-.- US Total Rate*							18.3%

*Source: 2008 CDC BRFSS

Current Smoker Rate By Education (Ages 18-64)



	1997	1999	2001	2003	2005	2007	2009
— Total	31.5%	31.5%	37.4%	33.2%	29.4%	30.1%	35.3%
—◆— <HS	42.0%	61.9%	58.0%	55.0%	71.4%	47.1%	73.7%
—▲— HS or GED	40.5%	35.6%	42.2%	41.2%	36.5%	33.2%	37.0%
—■— Some College	29.1%	32.7%	38.9%	30.1%	30.7%	33.9%	39.9%
—●— College Degree +	9.7%	12.0%	18.9%	16.5%	14.9%	15.9%	14.4%
-.-.- US Total Rate*							18.3%

*Source: 2008 CDC BRFSS

Interview Year 1997

		Current Smoke Rate	
		Yes	No
Total		31.5%	68.5%
Gender	Male	30.5%	69.5%
	Female	32.2%	67.8%
Age	18 - 24	28.3%	71.7%
	25 - 34	36.4%	63.6%
	35 - 44	33.8%	66.2%
	45 - 54	25.3%	74.7%
	55 - 64	29.3%	70.7%
Employed	Yes	29.4%	70.6%
	No	36.7%	63.3%
Income	< \$15K	45.7%	54.3%
	\$15-25K	38.6%	61.4%
	\$25-50K	30.4%	69.6%
	\$50K +	13.5%	86.5%
Education	Less than High School	42.0%	58.0%
	High School Diploma or GED	40.5%	59.5%
	Some College/Technical	29.1%	70.9%
	College Degree or Higher	9.7%	90.3%

Interview Year 1999

		Current Smoke Rate	
		Yes	No
Total		31.5%	68.5%
Gender	Male	29.6%	70.4%
	Female	33.3%	66.7%
Age	18 - 24	46.3%	53.7%
	25 - 34	30.3%	69.7%
	35 - 44	35.7%	64.3%
	45 - 54	28.3%	71.7%
	55 - 64	19.0%	81.0%
Employed	Yes	31.0%	69.0%
	No	35.9%	64.1%
Income	< \$15K	48.8%	51.2%
	\$15-25K	39.3%	60.7%
	\$25-50K	25.9%	74.1%
	\$50K +	22.7%	77.3%
Education	Less than High School	61.9%	38.1%
	High School Diploma or GED	35.6%	64.4%
	Some College/Technical	32.7%	67.3%
	College Degree or Higher	12.0%	88.0%

Interview Year 2001

		Current Smoke Rate	
--	--	--------------------	--

		Yes	No
Total		37.4%	62.6%
Gender	Male	36.4%	63.6%
	Female	38.2%	61.8%
Age	18 - 24	49.1%	50.9%
	25 - 34	39.0%	61.0%
	35 - 44	42.8%	57.2%
	45 - 54	34.8%	65.2%
	55 - 64	24.5%	75.5%
Employed	Yes	36.9%	63.1%
	No	38.4%	61.6%
Income	< \$15K	48.4%	51.6%
	\$15-25K	42.9%	57.1%
	\$25-50K	40.9%	59.1%
	\$50K +	26.9%	73.1%
Education	Less than High School	58.0%	42.0%
	High School Diploma or GED	42.2%	57.8%
	Some College/Technical	38.9%	61.1%
	College Degree or Higher	18.9%	81.1%

Interview Year 2003

		Current Smoke Rate	
		Yes	No
Total		33.2%	66.8%
Gender	Male	36.3%	63.7%
	Female	29.7%	70.3%
Age	18 - 24	40.6%	59.4%
	25 - 34	29.5%	70.5%
	35 - 44	38.5%	61.5%
	45 - 54	30.9%	69.1%
	55 - 64	27.1%	72.9%
Employed	Yes	32.1%	67.9%
	No	36.4%	63.6%
Income	< \$15K	47.7%	52.3%
	\$15-25K	51.4%	48.6%
	\$25-50K	30.1%	69.9%
	\$50K +	18.5%	81.5%
Education	Less than High School	55.0%	45.0%
	High School Diploma or GED	41.2%	58.8%
	Some College/Technical	30.1%	69.9%
	College Degree or Higher	16.5%	83.5%

Interview Year 2005

		Current Smoke Rate	
		Yes	No
Total		29.4%	70.6%
Gender	Male	29.4%	70.6%
	Female	29.4%	70.6%
Age	18 - 24	35.0%	65.0%
	25 - 34	33.3%	66.7%
	35 - 44	30.8%	69.2%
	45 - 54	27.5%	72.5%
	55 - 64	24.0%	76.0%
Employed	Yes	26.1%	73.9%
	No	38.9%	61.1%
Income	< \$15K	48.9%	51.1%
	\$15-25K	50.7%	49.3%
	\$25-50K	28.5%	71.5%
	\$50K +	19.9%	80.1%
Education	Less than High School	71.4%	28.6%
	High School Diploma or GED	36.5%	63.5%
	Some College/Technical	30.7%	69.3%
	College Degree or Higher	14.9%	85.1%

Interview Year 2007

		Current Smoke Rate	
		Yes	No
Total		30.1%	69.9%
Gender	Male	29.9%	70.1%
	Female	30.3%	69.7%
Age	18 - 24	37.1%	62.9%
	25 - 34	34.2%	65.8%
	35 - 44	29.5%	70.5%
	45 - 54	34.5%	65.5%
	55 - 64	21.1%	78.9%
Employed	Yes	30.2%	69.8%
	No	30.6%	69.4%
Income	< \$15K	51.8%	48.2%
	\$15-25K	55.1%	44.9%
	\$25-50K	37.0%	63.0%
	\$50K +	15.3%	84.7%
Education	Less than High School	47.1%	52.9%
	High School Diploma or GED	33.2%	66.8%
	Some College/Technical	33.9%	66.1%
	College Degree or Higher	15.9%	84.1%

Interview Year 2009

		Current Smoke Rate	
		Yes	No
Total		35.3%	64.7%
Gender	Male	31.4%	68.6%
	Female	39.6%	60.4%
Age	18 - 24	55.8%	44.2%
	25 - 34	45.0%	55.0%
	35 - 44	32.4%	67.6%
	45 - 54	24.5%	75.5%
	55 - 64	22.3%	77.7%
Employed	Yes	31.5%	68.5%
	No	43.8%	56.2%
Income	< \$15K	69.8%	30.2%
	\$15-25K	45.7%	54.3%
	\$25-50K	31.9%	68.1%
	\$50K +	20.3%	79.7%
Education	Less than High School	73.7%	26.3%
	High School Diploma or GED	37.0%	63.0%
	Some College/Technical	39.9%	60.1%
	College Degree or Higher	14.4%	85.6%