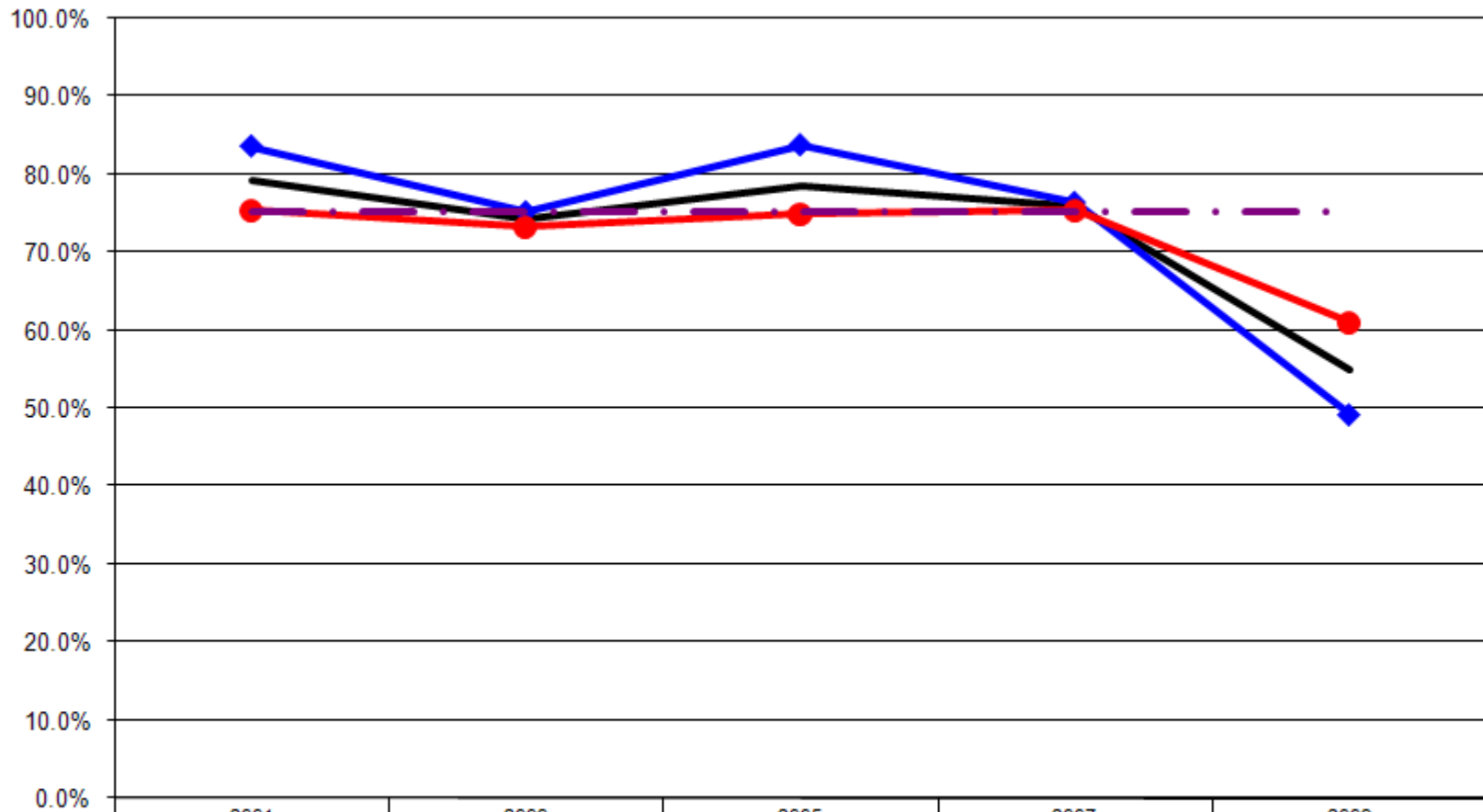


## Ages: 18-64 Survey Population Exercise

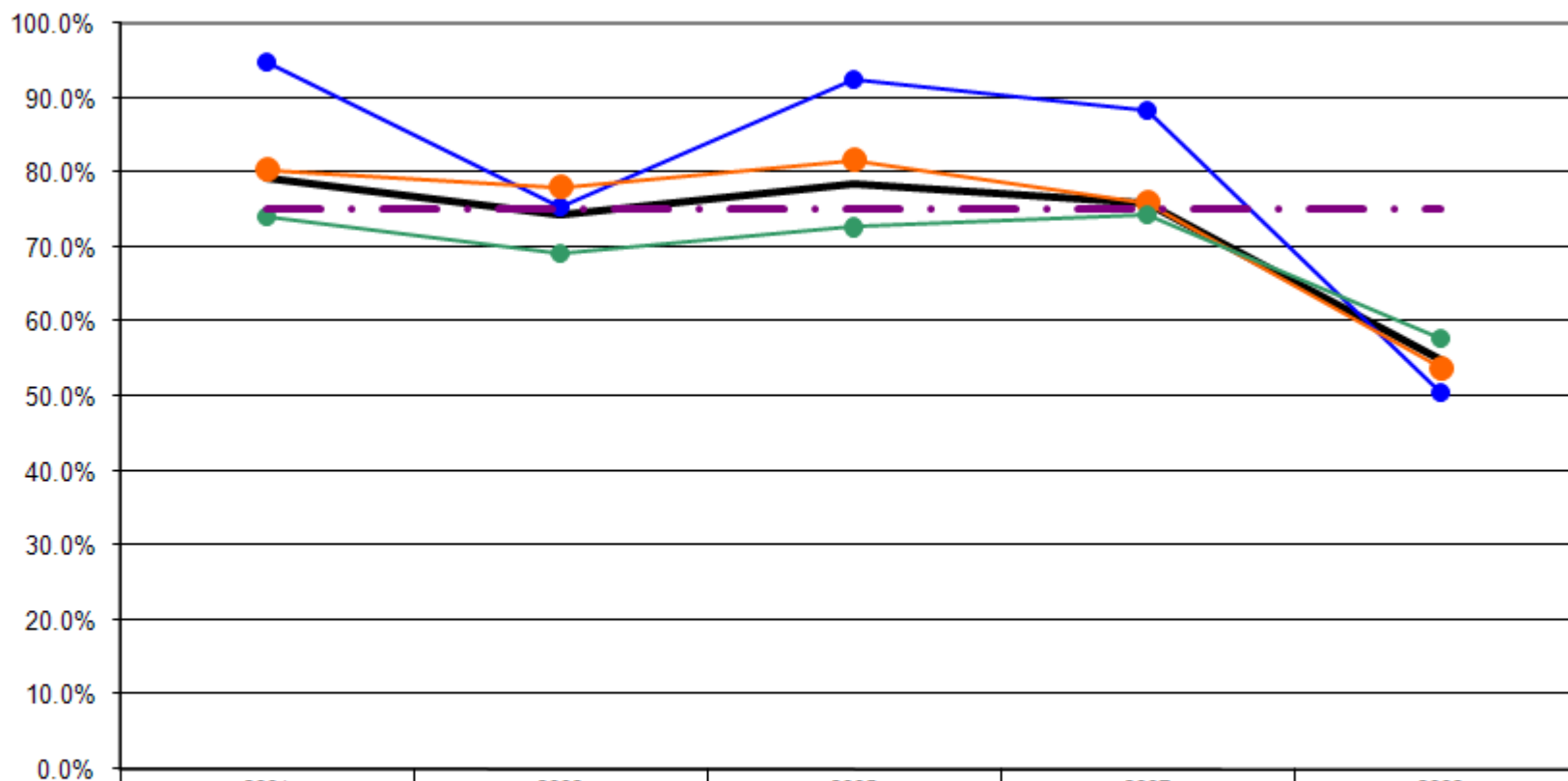
### Any Physical Activity in the Past Month By Gender (Ages: 18-64)



	2001	2003	2005	2007	2009
— Total	79.2%	74.3%	78.5%	75.9%	54.9%
—◆— Male	83.6%	75.2%	83.8%	76.4%	49.3%
—●— Female	75.4%	73.3%	74.9%	75.4%	61.0%
- - - US Total Rate*					75.2%

\*Source: 2008 CDC BRFSS

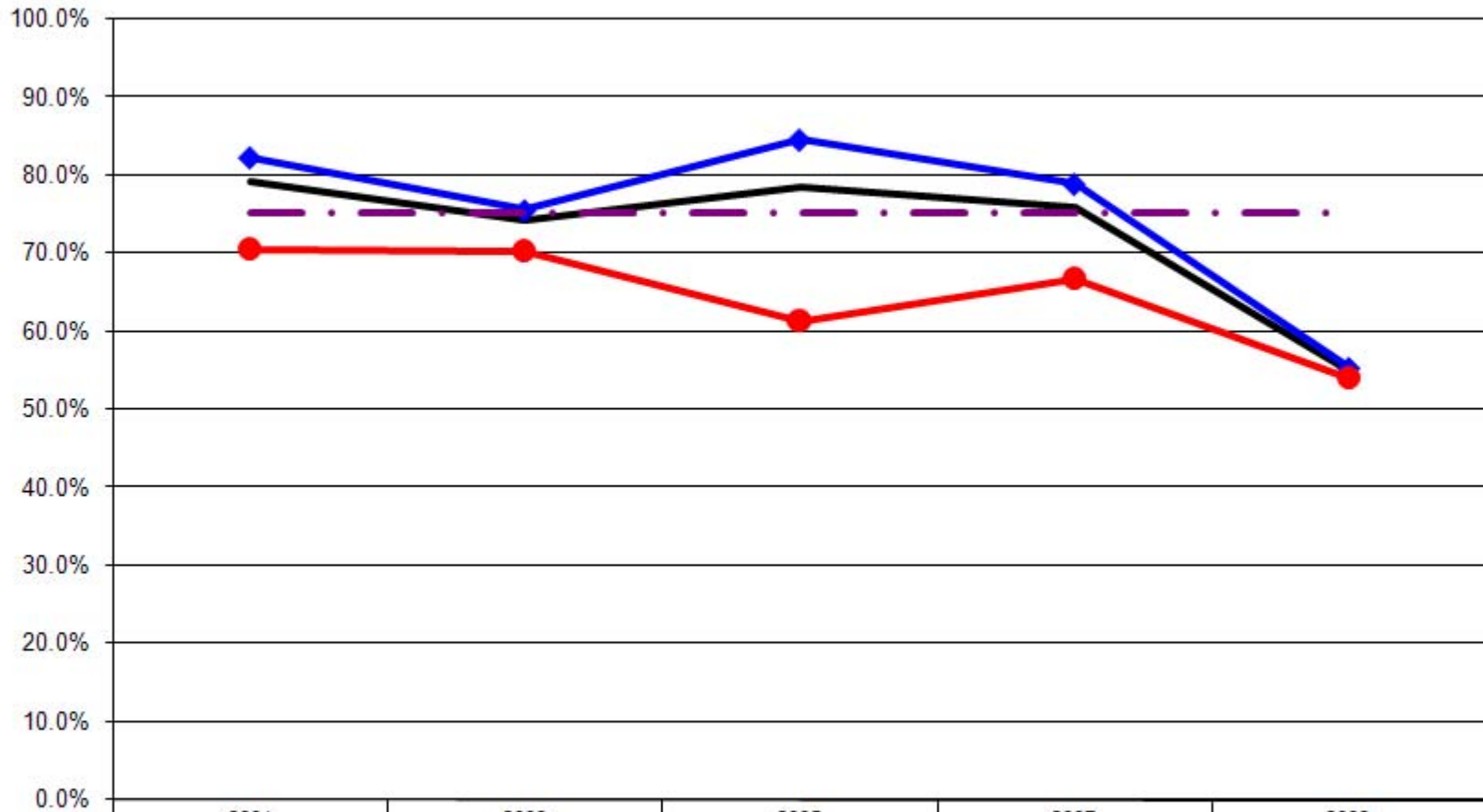
### Any Physical Activity in the Past Month By Age (Ages: 18-64)



	2001	2003	2005	2007	2009
— Total	79.2%	74.3%	78.5%	75.9%	54.9%
—● 18-24	94.7%	75.4%	92.5%	88.2%	50.6%
—● 25-44	80.4%	78.1%	81.7%	75.9%	53.9%
—● 45-64	74.2%	69.2%	72.7%	74.4%	57.7%
-.-.- US Total Rate*					75.2%

\*Source: 2008 CDC BRFSS

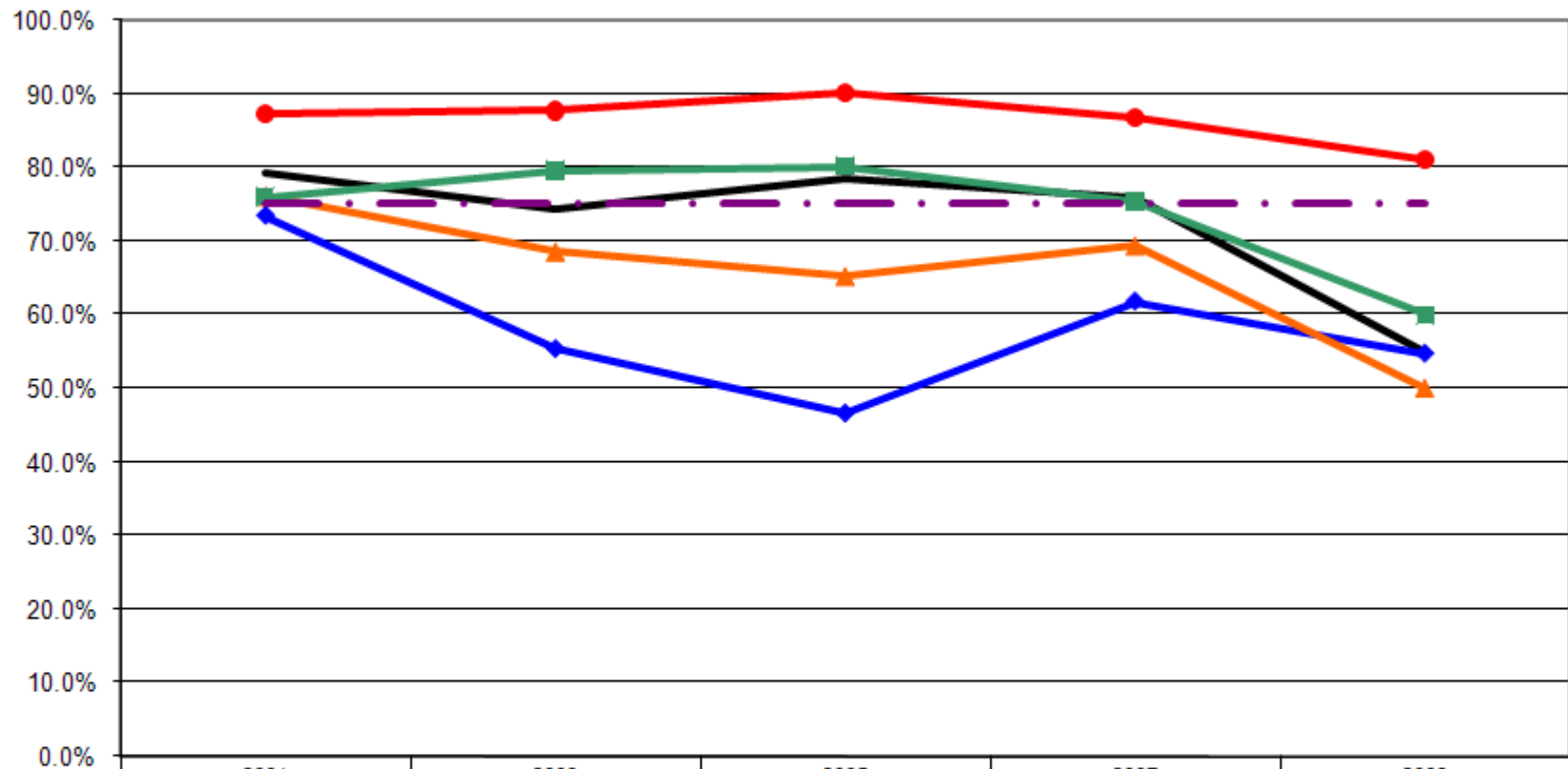
### Any Physical Activity in the Past Month By Employment Status (Ages: 18-64)



	2001	2003	2005	2007	2009
— Total	79.2%	74.3%	78.5%	75.9%	54.9%
—◆— Employed	82.3%	75.5%	84.6%	78.9%	55.3%
—●— Not Employed	70.5%	70.2%	61.4%	66.7%	54.0%
- · - · - US Total Rate*					75.2%

\*Source: 2008 CDC BRFSS

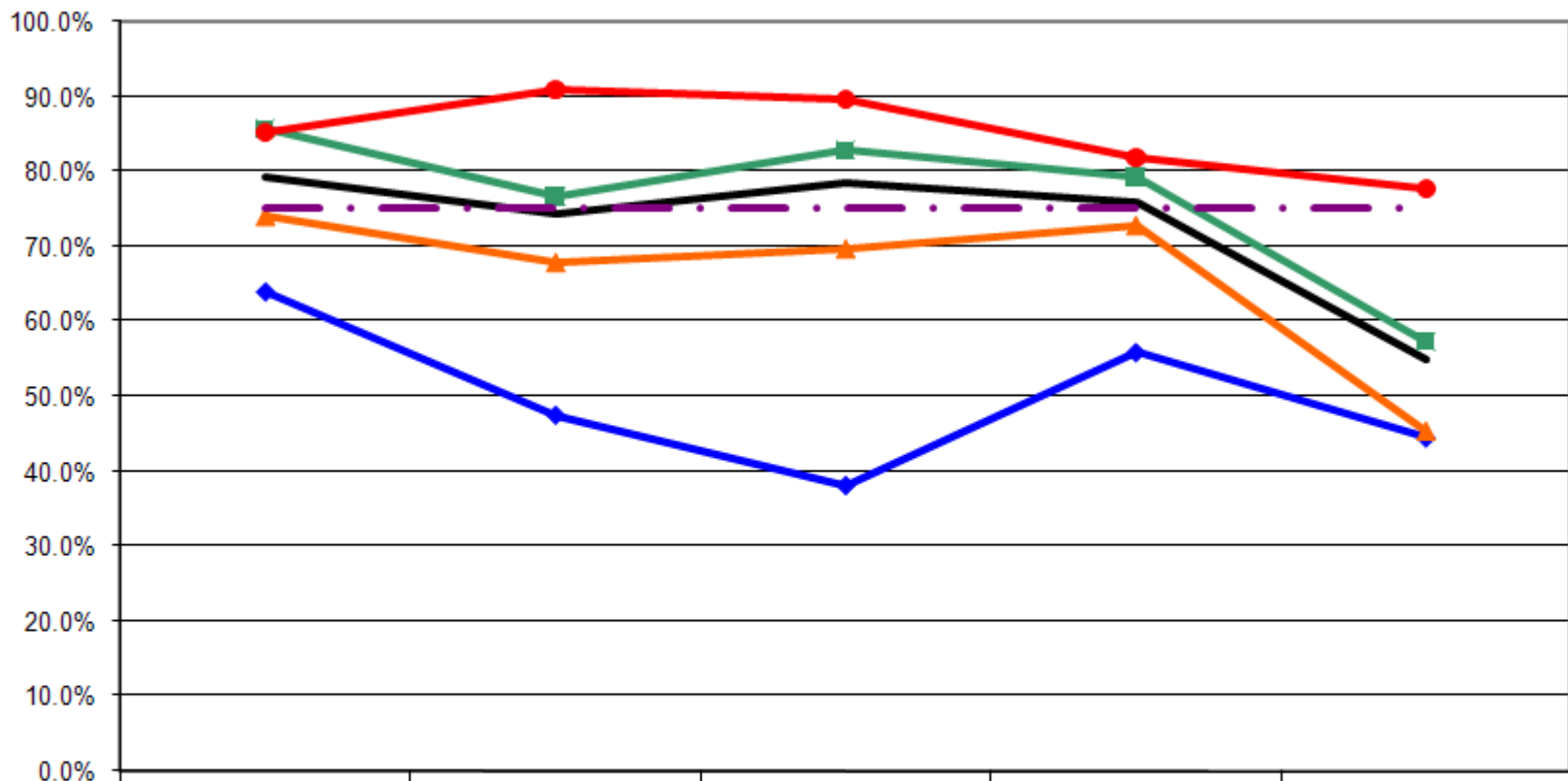
### Any Physical Activity in the Past Month By Income (Ages: 18-64)



	2001	2003	2005	2007	2009
Total	79.2%	74.3%	78.5%	75.9%	54.9%
<\$15K	73.4%	55.4%	46.7%	61.8%	54.8%
\$15-25K	76.2%	68.6%	65.2%	69.4%	50.0%
\$25-50K	76.0%	79.5%	80.2%	75.4%	60.0%
\$50K+	87.3%	87.7%	90.1%	86.8%	81.1%
US Total Rate*					75.2%

\*Source: 2008 CDC BRFSS

### Any Physical Activity in the Past Month By Education (Ages: 18-64)



	2001	2003	2005	2007	2009
— Total	79.2%	74.3%	78.5%	75.9%	54.9%
—◆— <HS	64.0%	47.5%	38.1%	55.9%	44.4%
—▲— HS or GED	74.0%	67.8%	69.6%	72.8%	45.4%
—■— Some College	85.6%	76.7%	82.9%	79.3%	57.3%
—●— College Degree +	85.2%	90.9%	89.6%	81.9%	77.8%
- - - US Total Rate*					75.2%

\*Source: 2008 CDC BRFSS

Interview Year 2001

		During the past month, did you participate in any physical activities or exercises?	
		Yes	No
<b>Total</b>		<b>79.2%</b>	<b>20.8%</b>
Gender	Male	83.6%	16.4%
	Female	75.4%	24.6%
Age	18 - 24	94.7%	5.3%
	25 - 34	85.7%	14.3%
	35 - 44	76.6%	23.4%
	45 - 54	71.7%	28.3%
	55 - 64	77.6%	22.4%
Employed	Yes	82.3%	17.7%
	No	70.5%	29.5%
Income	< \$15K	73.4%	26.6%
	\$15-25K	76.2%	23.8%
	\$25-50K	76.0%	24.0%
	\$50K +	87.3%	12.7%
Education	Less than High School	64.0%	36.0%
	High School Diploma or GED	74.0%	26.0%
	Some College/Technical	85.6%	14.4%
	College Degree or Higher	85.2%	14.8%

Interview Year 2003

		During the past month, did you participate in any physical activities or exercises?	
		Yes	No
<b>Total</b>		<b>74.3%</b>	<b>25.7%</b>
Gender	Male	75.2%	24.8%
	Female	73.3%	26.7%
Age	18 - 24	75.4%	24.6%
	25 - 34	82.1%	17.9%
	35 - 44	74.6%	25.4%
	45 - 54	71.8%	28.2%
	55 - 64	65.9%	34.1%
Employed	Yes	75.5%	24.5%
	No	70.2%	29.8%
Income	< \$15K	55.4%	44.6%
	\$15-25K	68.6%	31.4%
	\$25-50K	79.5%	20.5%
	\$50K +	87.7%	12.3%
Education	Less than High School	47.5%	52.5%
	High School Diploma or GED	67.8%	32.2%
	Some College/Technical	76.7%	23.3%
	College Degree or Higher	90.9%	9.1%

Interview Year 2005

		During the past month, did you participate in any physical activities or exercises?	
		Yes	No
<b>Total</b>		<b>78.5%</b>	<b>21.5%</b>
Gender	Male	83.8%	16.2%
	Female	74.9%	25.1%
Age	18 - 24	92.5%	7.5%
	25 - 34	77.4%	22.6%
	35 - 44	84.7%	15.3%
	45 - 54	77.5%	22.5%
	55 - 64	67.0%	33.0%
Employed	Yes	84.6%	15.4%
	No	61.4%	38.6%
Income	< \$15K	46.7%	53.3%
	\$15-25K	65.2%	34.8%
	\$25-50K	80.2%	19.8%
	\$50K +	90.1%	9.9%
Education	Less than High School	38.1%	61.9%
	High School Diploma or GED	69.6%	30.4%
	Some College/Technical	82.9%	17.1%
	College Degree or Higher	89.6%	10.4%

Interview Year 2007

		During the past month, did you participate in any physical activities or exercises?	
		Yes	No
<b>Total</b>		<b>75.9%</b>	<b>24.1%</b>
Gender	Male	76.4%	23.6%
	Female	75.4%	24.6%
Age	18 - 24	88.2%	11.8%
	25 - 34	78.4%	21.6%
	35 - 44	73.6%	26.4%
	45 - 54	75.7%	24.3%
	55 - 64	73.0%	27.0%
Employed	Yes	78.9%	21.1%
	No	66.7%	33.3%
Income	< \$15K	61.8%	38.2%
	\$15-25K	69.4%	30.6%
	\$25-50K	75.4%	24.6%
	\$50K +	86.8%	13.2%
Education	Less than High School	55.9%	44.1%
	High School Diploma or GED	72.8%	27.2%
	Some College/Technical	79.3%	20.7%
	College Degree or Higher	81.9%	18.1%

		During the past month, did you participate in any physical activities or exercises?	
		Yes	No
<b>Total</b>		<b>54.9%</b>	<b>45.1%</b>
Gender	Male	49.3%	50.7%
	Female	61.0%	39.0%
Age	18 - 24	50.6%	49.4%
	25 - 34	62.4%	37.6%
	35 - 44	45.5%	54.5%
	45 - 54	59.1%	40.9%
	55 - 64	56.3%	43.7%
Employed	Yes	55.3%	44.7%
	No	54.0%	46.0%
Income	< \$15K	54.8%	45.2%
	\$15-25K	50.0%	50.0%
	\$25-50K	60.0%	40.0%
	\$50K +	81.1%	18.9%
Education	Less than High School	44.4%	55.6%
	High School Diploma or GED	45.4%	54.6%
	Some College/Technical	57.3%	42.7%
	College Degree or Higher	77.8%	22.2%