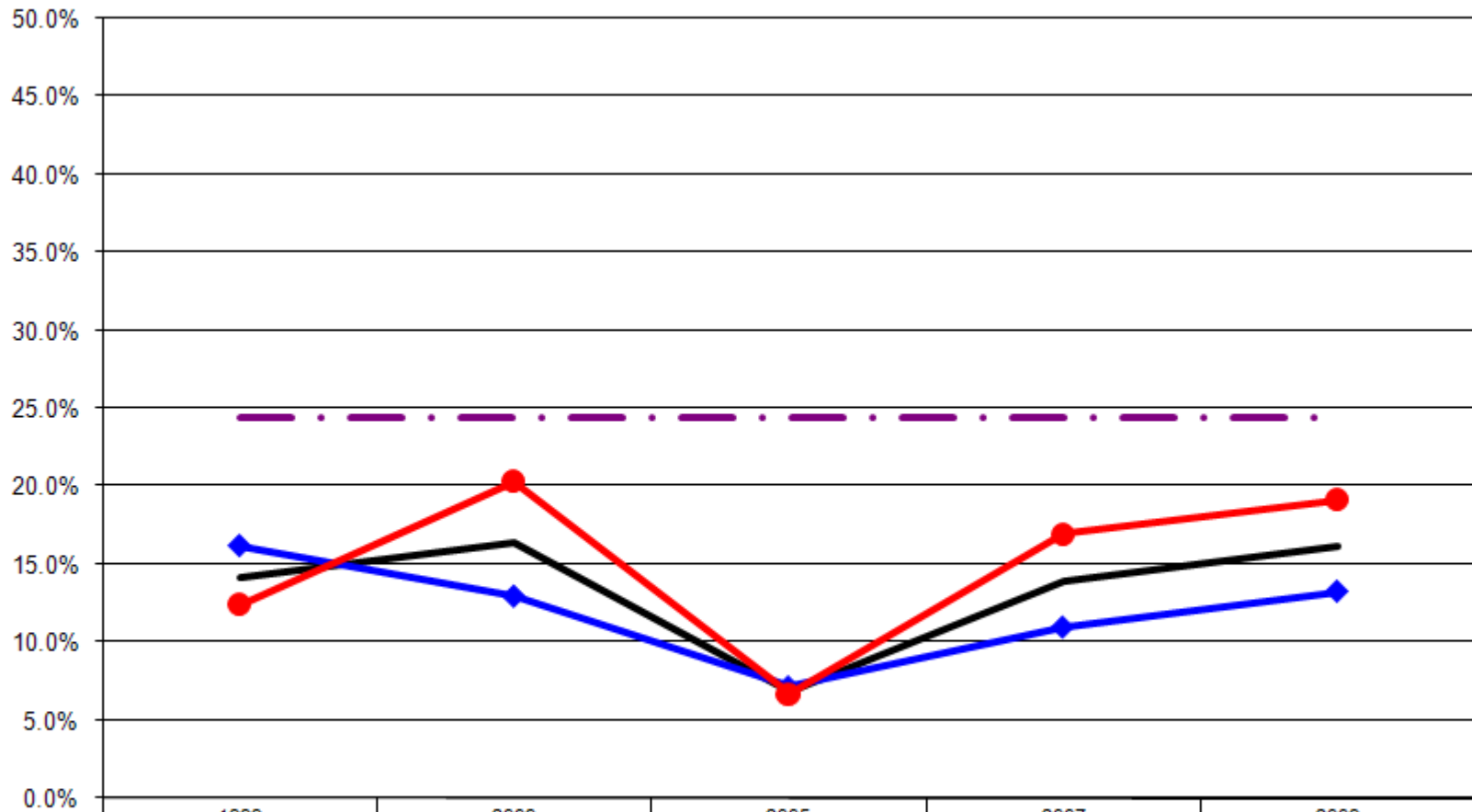


Ages: 18-64 Survey Population Nutrition

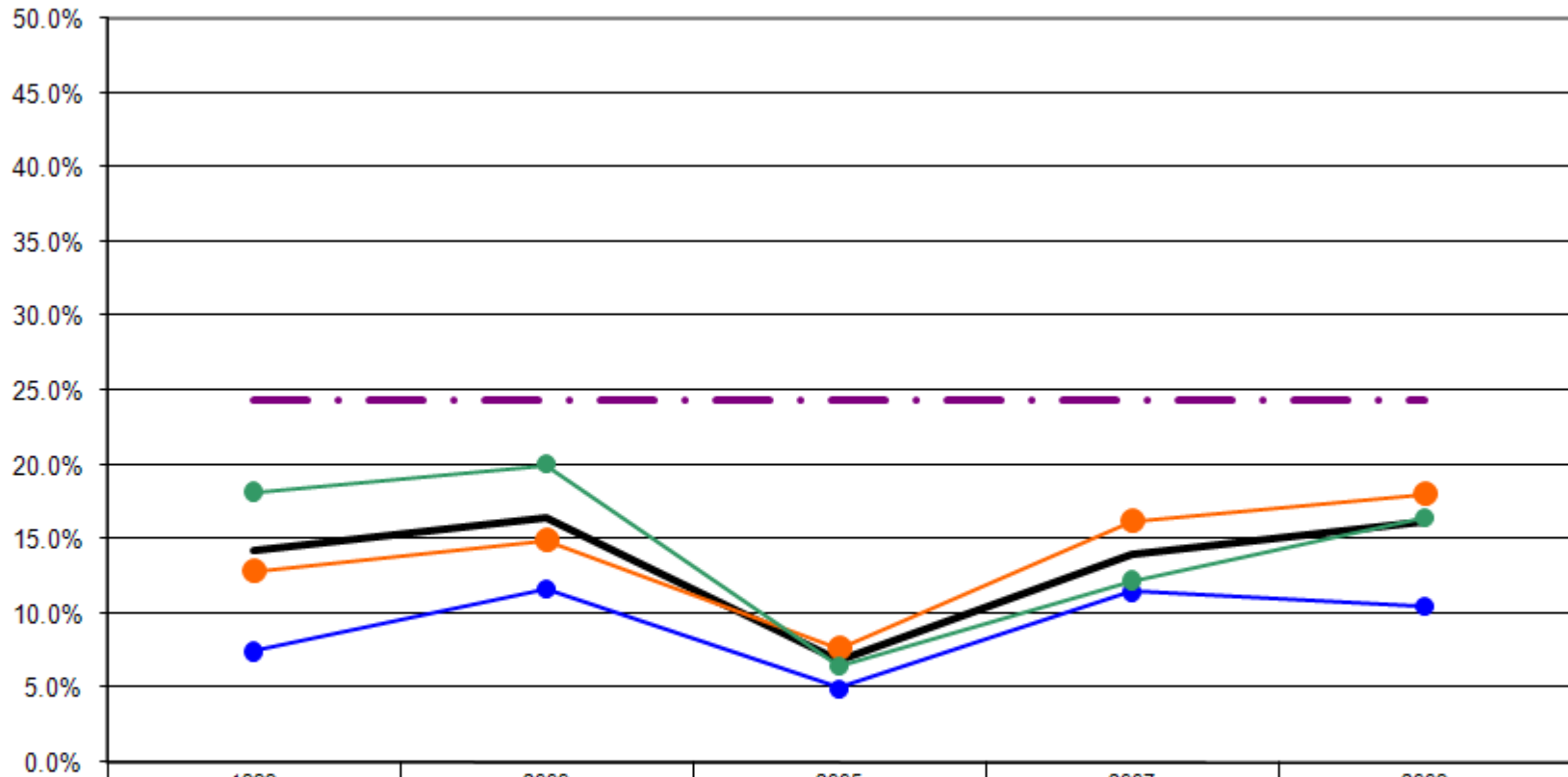
Nutrition By Gender (Ages: 18-64)



	1999	2003	2005	2007	2009
— Total	14.2%	16.4%	6.9%	13.9%	16.1%
—◆ Male	16.2%	13.0%	7.2%	11.0%	13.3%
—● Female	12.4%	20.3%	6.7%	17.0%	19.2%
-.-.- US Total Rate*					24.4%

*Source: 2007 CDC BRFSS

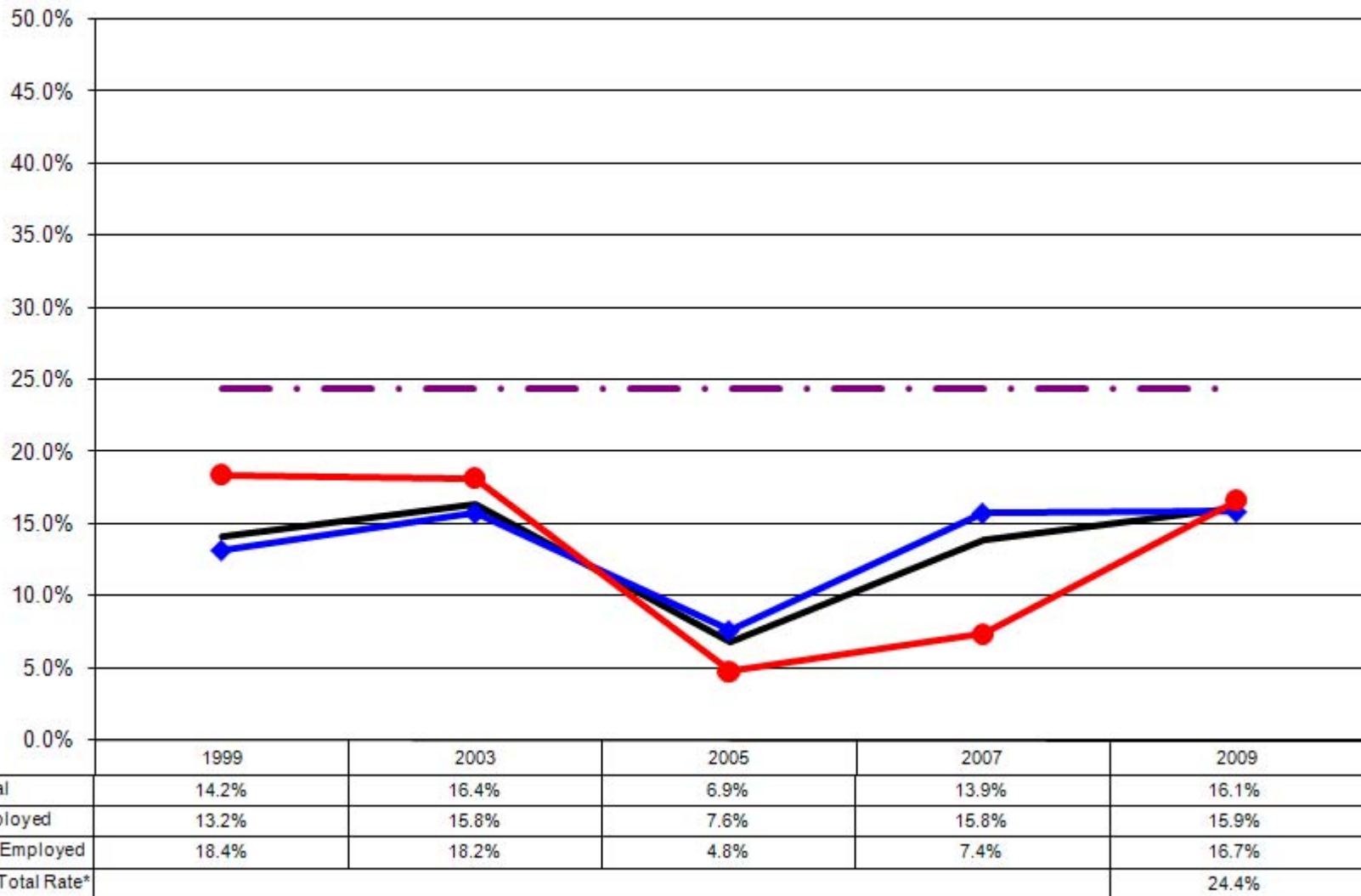
Nutrition By Age (Ages: 18-64)



	1999	2003	2005	2007	2009
— Total	14.2%	16.4%	6.9%	13.9%	16.1%
● 18-24	7.5%	11.6%	5.0%	11.4%	10.5%
● 25-44	12.8%	14.9%	7.7%	16.3%	18.0%
● 45-64	18.1%	20.0%	6.5%	12.2%	16.4%
- - - US Total Rate*					24.4%

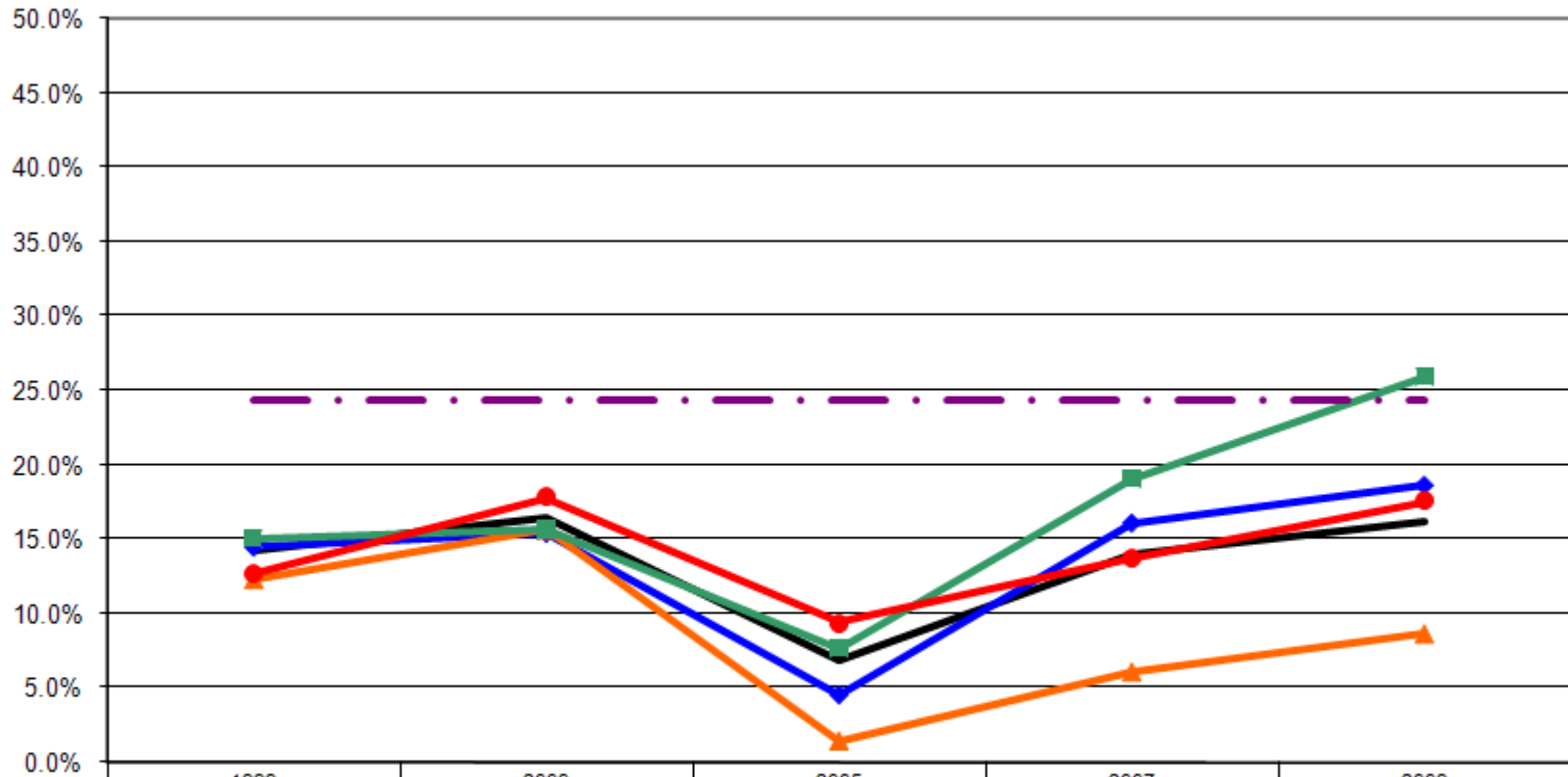
*Source: 2007 CDC BRFSS

Nutrition By Employment Status (Ages: 18-64)



*Source: 2007 CDC BRFSS

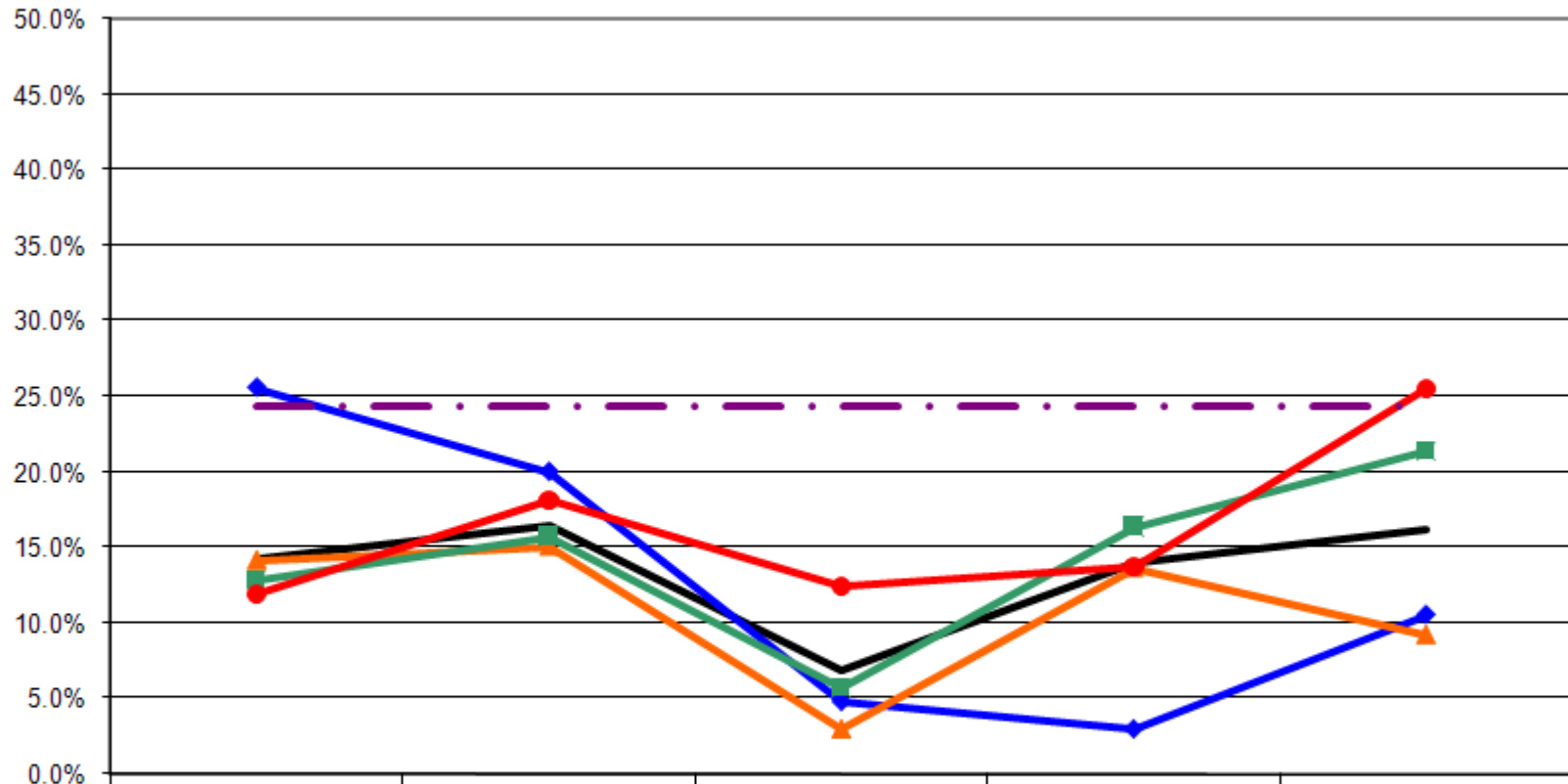
Nutrition By Income (Ages: 18-64)



	1999	2003	2005	2007	2009
— Total	14.2%	16.4%	6.9%	13.9%	16.1%
—◆— <\$15K	14.5%	15.4%	4.5%	16.1%	18.6%
—▲— \$15-25K	12.4%	15.7%	1.5%	6.1%	8.7%
—■— \$25-50K	15.0%	15.7%	7.7%	19.0%	25.9%
—●— \$50K+	12.7%	17.8%	9.4%	13.8%	17.6%
- - - US Total Rate*					24.4%

*Source: 2007 CDC BRFSS

Nutrition By Education (Ages: 18-64)



	1999	2003	2005	2007	2009
— Total	14.2%	16.4%	6.9%	13.9%	16.1%
—◆— <HS	25.6%	20.0%	4.8%	2.9%	10.5%
—▲— HS or GED	14.1%	15.1%	3.0%	13.7%	9.2%
—■— Some College	12.8%	15.8%	5.8%	16.4%	21.4%
—●— College Degree +	12.0%	18.2%	12.5%	13.8%	25.6%
- - - US Total Rate*					24.4%

*Source: 2007 CDC BRFSS

Interview Year 1999

		Adults who have consumed fruits and vegetables five or more times per day	
		Yes	No
Total		14.2%	85.8%
Gender	Male	16.2%	83.8%
	Female	12.4%	87.6%
Age	18 - 24	7.5%	92.5%
	25 - 34	15.6%	84.4%
	35 - 44	10.6%	89.4%
	45 - 54	16.7%	83.3%
	55 - 64	20.2%	79.8%
Employed	Yes	13.2%	86.8%
	No	18.4%	81.6%
Income	< \$15K	14.5%	85.5%
	\$15-25K	12.4%	87.6%
	\$25-50K	15.0%	85.0%
	\$50K +	12.7%	87.3%
Education	Less than High School	25.6%	74.4%
	High School Diploma or GED	14.1%	85.9%
	Some College/Technical	12.8%	87.2%
	College Degree or Higher	12.0%	88.0%

Interview Year 2003

		Adults who have consumed fruits and vegetables five or more times per day	
		Yes	No
Total		16.4%	83.6%
Gender	Male	13.0%	87.0%
	Female	20.3%	79.7%
Age	18 - 24	11.6%	88.4%
	25 - 34	17.0%	83.0%
	35 - 44	13.1%	86.9%
	45 - 54	21.8%	78.2%
	55 - 64	17.6%	82.4%
Employed	Yes	15.8%	84.2%
	No	18.2%	81.8%
Income	< \$15K	15.4%	84.6%
	\$15-25K	15.7%	84.3%
	\$25-50K	15.7%	84.3%
	\$50K +	17.8%	82.2%
Education	Less than High School	20.0%	80.0%
	High School Diploma or GED	15.1%	84.9%
	Some College/Technical	15.8%	84.2%
	College Degree or Higher	18.2%	81.8%

Interview Year 2005

		Adults who have consumed fruits and vegetables five or more times per day	
		Yes	No
Total		6.9%	93.1%
Gender	Male	7.2%	92.8%
	Female	6.7%	93.3%
Age	18 - 24	5.0%	95.0%
	25 - 34	8.6%	91.4%
	35 - 44	7.0%	93.0%
	45 - 54	7.6%	92.4%
	55 - 64	5.1%	94.9%
Employed	Yes	7.6%	92.4%
	No	4.8%	95.2%
Income	< \$15K	4.5%	95.5%
	\$15-25K	1.5%	98.5%
	\$25-50K	7.7%	92.3%
	\$50K +	9.4%	90.6%
Education	Less than High School	4.8%	95.2%
	High School Diploma or GED	3.0%	97.0%
	Some College/Technical	5.8%	94.2%
	College Degree or Higher	12.5%	87.5%

Interview Year 2007

		Adults who have consumed fruits and vegetables five or more times per day	
		Yes	No
Total		13.9%	86.1%
Gender	Male	11.0%	89.0%
	Female	17.0%	83.0%
Age	18 - 24	11.4%	88.6%
	25 - 34	18.8%	81.2%
	35 - 44	14.0%	86.0%
	45 - 54	13.1%	86.9%
	55 - 64	11.3%	88.7%
Employed	Yes	15.8%	84.2%
	No	7.4%	92.6%
Income	< \$15K	16.1%	83.9%
	\$15-25K	6.1%	93.9%
	\$25-50K	19.0%	81.0%
	\$50K +	13.8%	86.2%
Education	Less than High School	2.9%	97.1%
	High School Diploma or GED	13.7%	86.3%
	Some College/Technical	16.4%	83.6%
	College Degree or Higher	13.8%	86.2%

		Adults who have consumed fruits and vegetables five or more times per day	
		Yes	No
Total		16.1%	83.9%
Gender	Male	13.3%	86.7%
	Female	19.2%	80.8%
Age	18 - 24	10.5%	89.5%
	25 - 34	17.1%	82.9%
	35 - 44	18.9%	81.1%
	45 - 54	17.3%	82.7%
	55 - 64	15.5%	84.5%
Employed	Yes	15.9%	84.1%
	No	16.7%	83.3%
Income	< \$15K	18.6%	81.4%
	\$15-25K	8.7%	91.3%
	\$25-50K	25.9%	74.1%
	\$50K +	17.6%	82.4%
Education	Less than High School	10.5%	89.5%
	High School Diploma or GED	9.2%	90.8%
	Some College/Technical	21.4%	78.6%
	College Degree or Higher	25.6%	74.4%