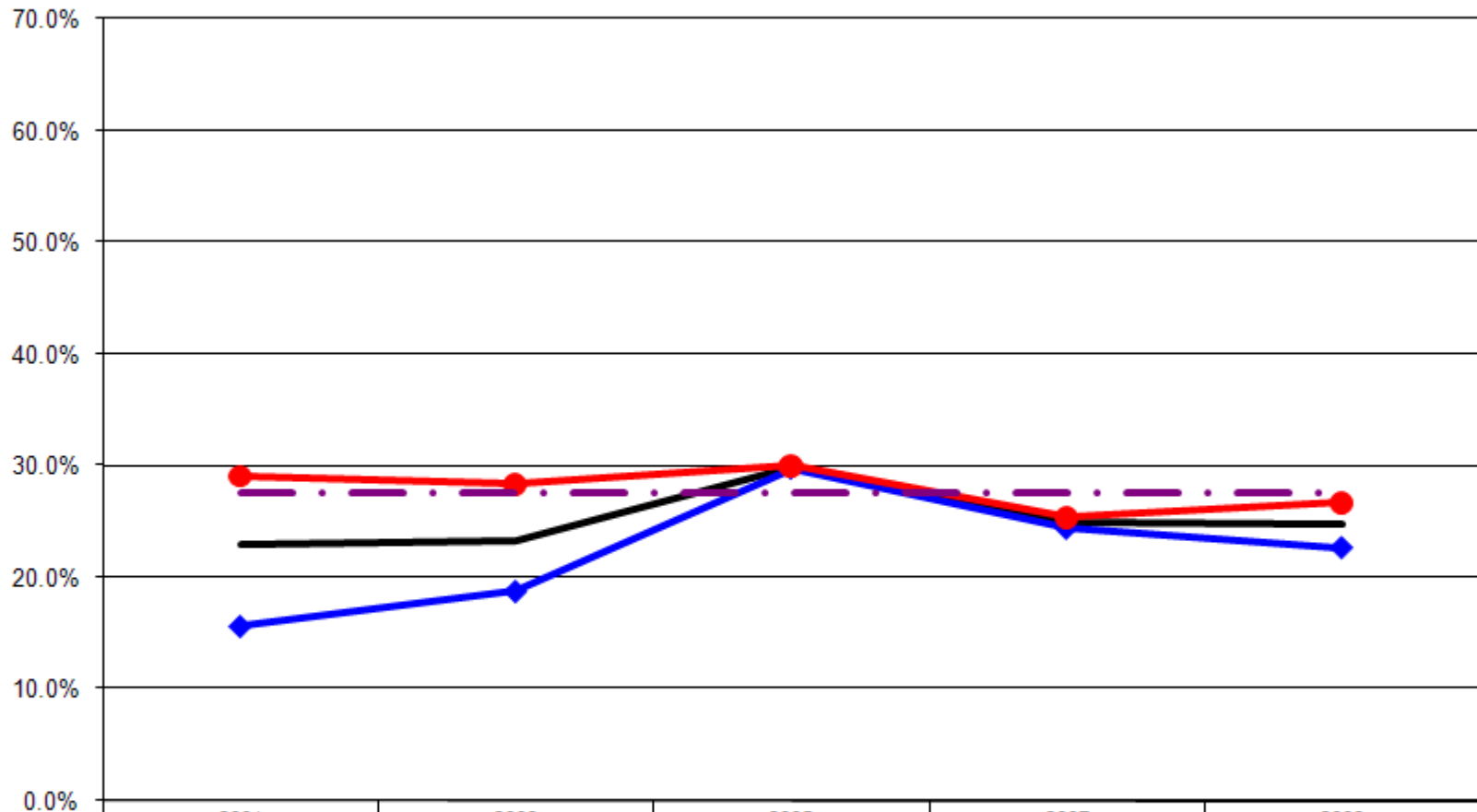


Ages: 18-64 Survey Population Arthritis

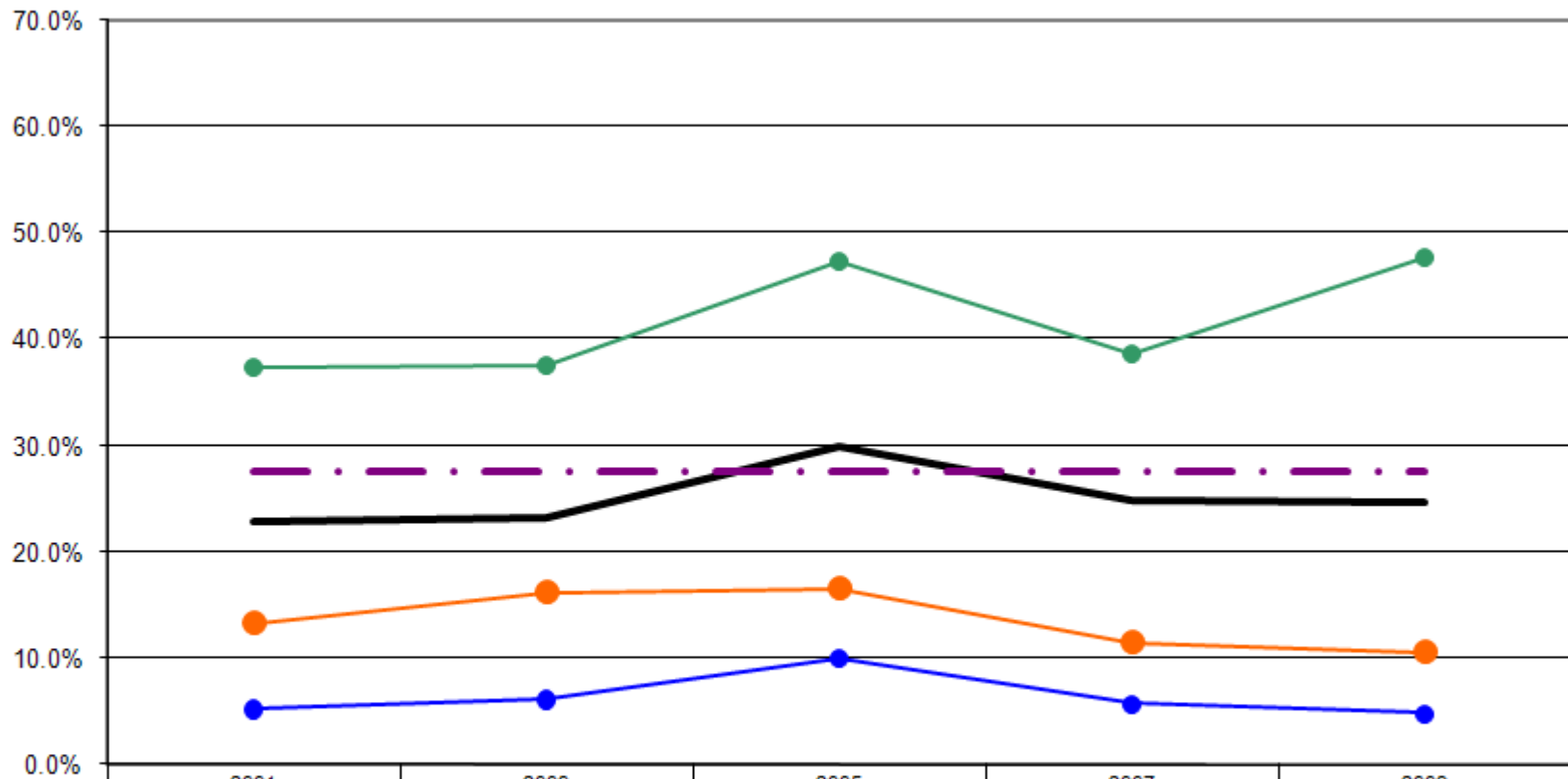
Told Ever Had Any Form of Arthritis By Gender (Ages: 18-64)



	2001	2003	2005	2007	2009
— Total	22.9%	23.2%	29.9%	24.9%	24.7%
—◆ Male	15.7%	18.8%	29.7%	24.4%	22.7%
—● Female	29.1%	28.3%	30.0%	25.4%	26.7%
- - - US Total Rate*					27.5%

*Source: 2007 CDC BRFSS

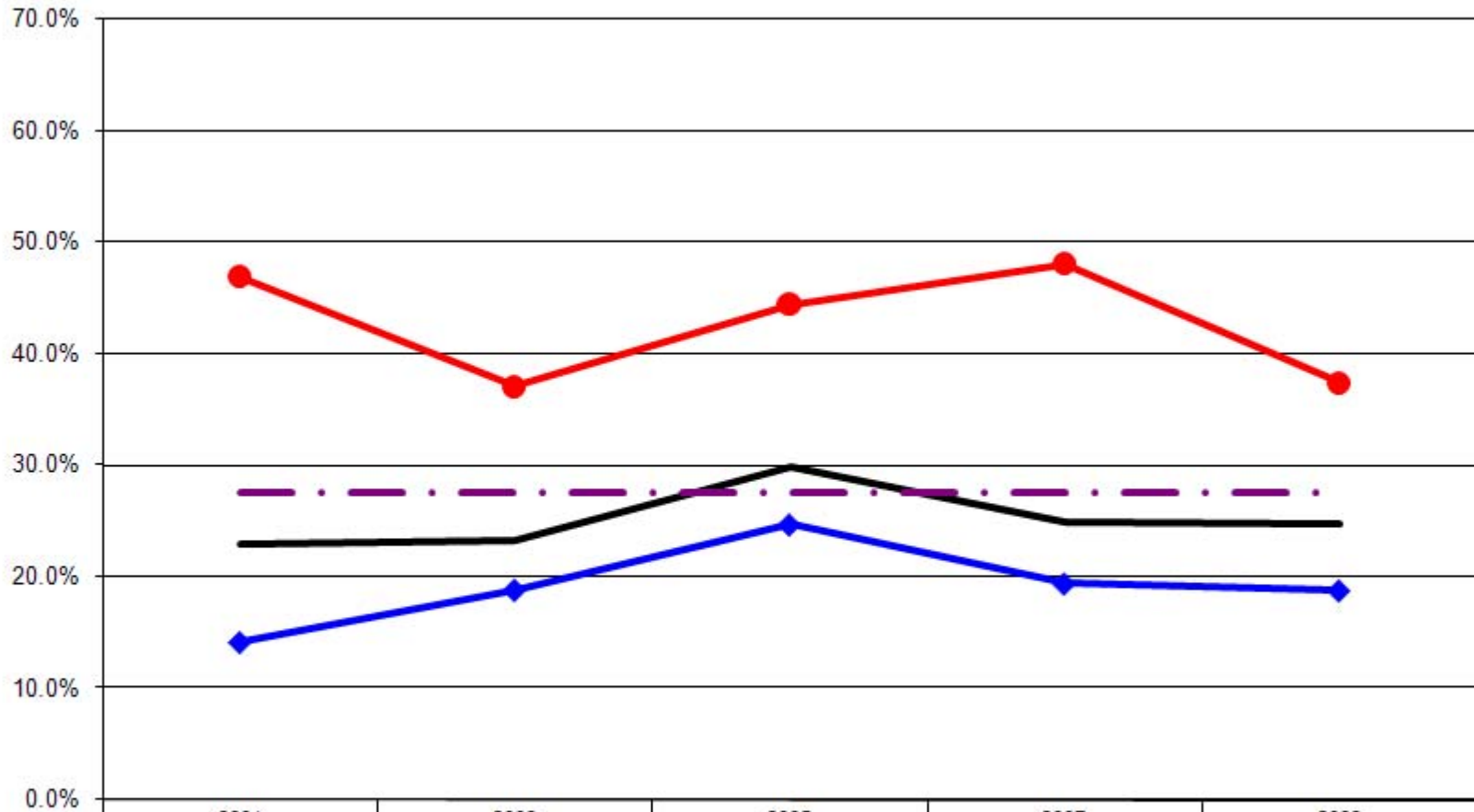
Told Ever Had Any Form of Arthritis By Age (Ages: 18-64)



	2001	2003	2005	2007	2009
— Total	22.9%	23.2%	29.9%	24.9%	24.7%
● 18-24	5.3%	6.2%	10.0%	5.7%	4.8%
● 25-44	13.3%	16.3%	16.6%	11.5%	10.6%
● 45-64	37.4%	37.6%	47.4%	38.7%	47.7%
- - - US Total Rate*					27.5%

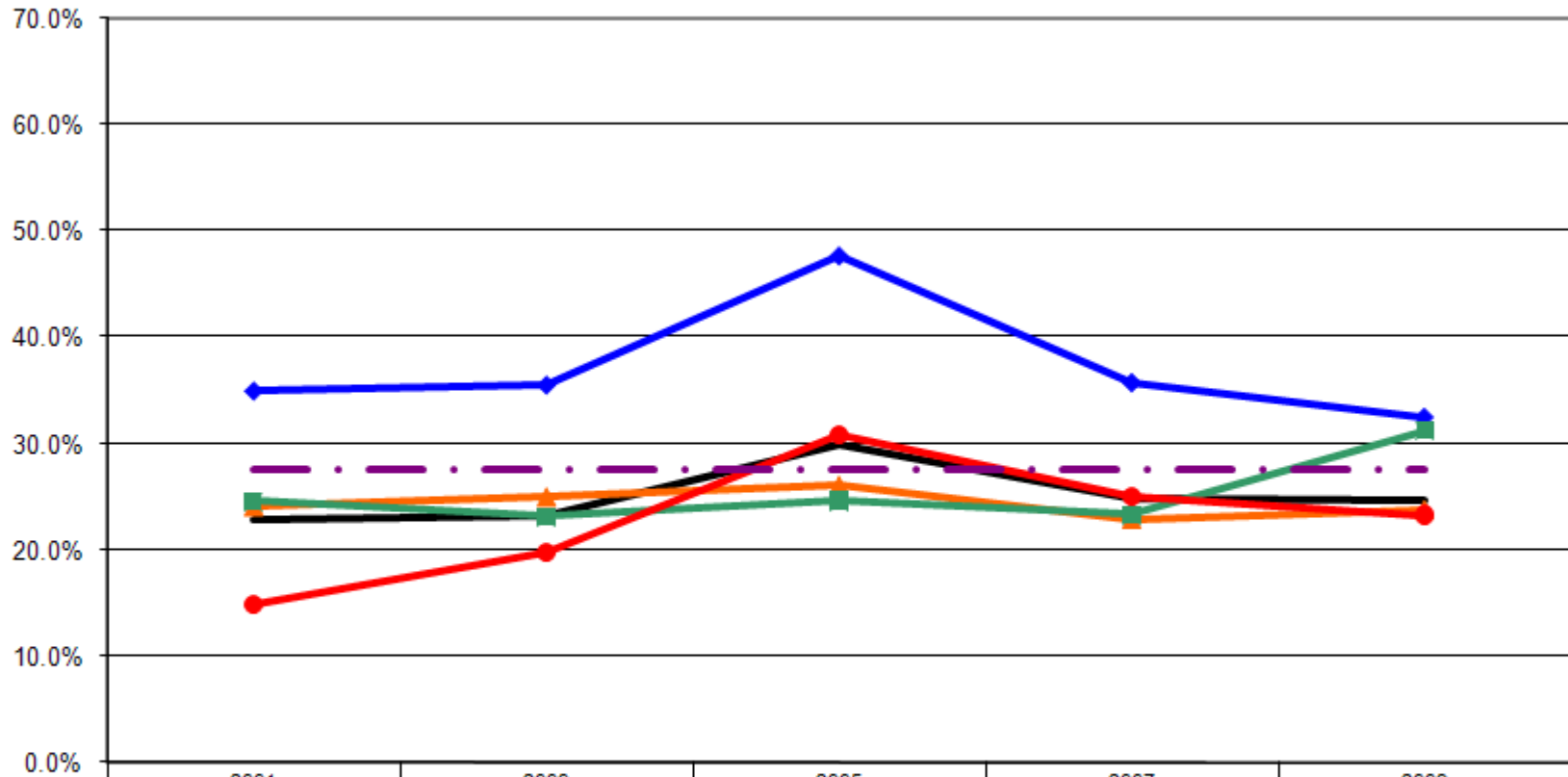
*Source: 2007 CDC BRFSS

Told Ever Had Any Form of Arthritis By Employment Status (Ages: 18-64)



*Source: 2007 CDC BRFSS

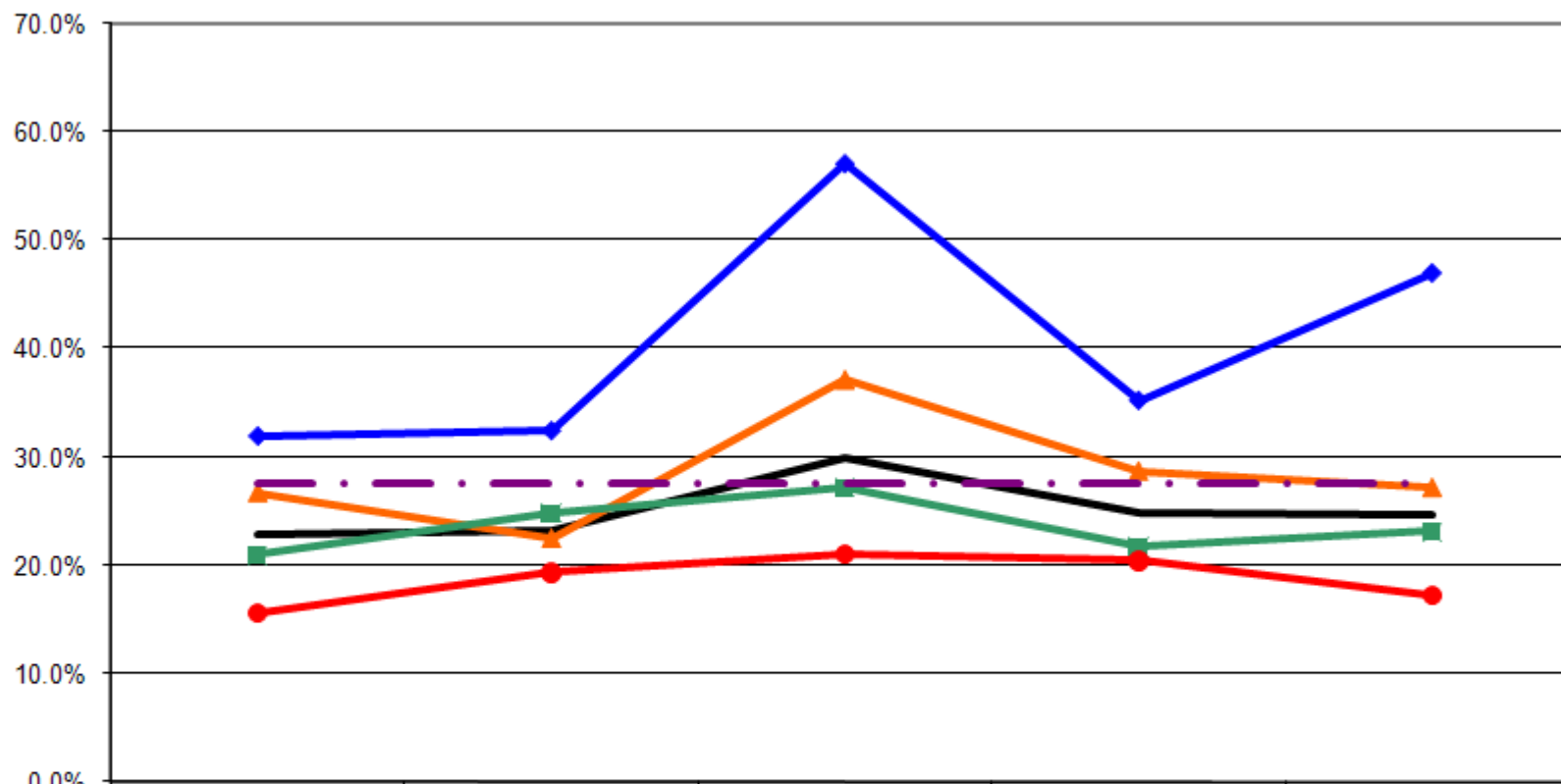
Told Ever Had Any Form of Arthritis By Income (Ages: 18-64)



	2001	2003	2005	2007	2009
— Total	22.9%	23.2%	29.9%	24.9%	24.7%
—◆— <\$15K	34.9%	35.5%	47.7%	35.7%	32.4%
—▲— \$15-25K	24.1%	25.0%	26.1%	22.9%	23.8%
—■— \$25-50K	24.5%	23.1%	24.6%	23.3%	31.3%
—●— \$50K+	14.9%	19.7%	30.8%	25.0%	23.3%
-.-.- US Total Rate*					27.5%

*Source: 2007 CDC BRFSS

Told Ever Had Any Form of Arthritis By Education (Ages: 18-64)



	2001	2003	2005	2007	2009
— Total	22.9%	23.2%	29.9%	24.9%	24.7%
—◆— <HS	32.0%	32.5%	57.1%	35.3%	47.1%
—▲— HS or GED	26.7%	22.5%	37.2%	28.7%	27.2%
—■— Some College	21.0%	24.8%	27.1%	21.7%	23.1%
—●— College Degree +	15.6%	19.3%	21.1%	20.4%	17.2%
- - - US Total Rate*					27.5%

*Source: 2007 CDC BRFSS

Interview Year 2001

		Have you EVER been told that you have some form of arthritis?	
		Yes	No
Total		22.9%	77.1%
Gender	Male	15.7%	84.3%
	Female	29.1%	70.9%
Age	18 - 24	5.3%	94.7%
	25 - 34	10.6%	89.4%
	35 - 44	15.2%	84.8%
	45 - 54	31.9%	68.1%
	55 - 64	45.4%	54.6%
Employed	Yes	14.2%	85.8%
	No	46.9%	53.1%
Income	< \$15K	34.9%	65.1%
	\$15-25K	24.1%	75.9%
	\$25-50K	24.5%	75.5%
	\$50K +	14.9%	85.1%
Education	Less than High School	32.0%	68.0%
	High School Diploma or GED	26.7%	73.3%
	Some College/Technical	21.0%	79.0%
	College Degree or Higher	15.6%	84.4%

Interview Year 2003

		Have you EVER been told that you have some form of arthritis?	
		Yes	No
Total		23.2%	76.8%
Gender	Male	18.8%	81.2%
	Female	28.3%	71.7%
Age	18 - 24	6.2%	93.8%
	25 - 34	10.4%	89.6%
	35 - 44	21.3%	78.7%
	45 - 54	30.8%	69.2%
	55 - 64	46.3%	53.7%
Employed	Yes	18.9%	81.1%
	No	37.1%	62.9%
Income	< \$15K	35.5%	64.5%
	\$15-25K	25.0%	75.0%
	\$25-50K	23.1%	76.9%
	\$50K +	19.7%	80.3%
Education	Less than High School	32.5%	67.5%
	High School Diploma or GED	22.5%	77.5%
	Some College/Technical	24.8%	75.2%
	College Degree or Higher	19.3%	80.7%

Interview Year 2005

		Have you EVER been told that you have some form of arthritis?	
		Yes	No
Total		29.9%	70.1%
Gender	Male	29.7%	70.3%
	Female	30.0%	70.0%
Age	18 - 24	10.0%	90.0%
	25 - 34	12.9%	87.1%
	35 - 44	19.2%	80.8%
	45 - 54	44.4%	55.6%
	55 - 64	51.0%	49.0%
Employed	Yes	24.7%	75.3%
	No	44.4%	55.6%
Income	< \$15K	47.7%	52.3%
	\$15-25K	26.1%	73.9%
	\$25-50K	24.6%	75.4%
	\$50K +	30.8%	69.2%
Education	Less than High School	57.1%	42.9%
	High School Diploma or GED	37.2%	62.8%
	Some College/Technical	27.1%	72.9%
	College Degree or Higher	21.1%	78.9%

Interview Year 2007

		Have you EVER been told that you have some form of arthritis?	
		Yes	No
Total		24.9%	75.1%
Gender	Male	24.4%	75.6%
	Female	25.4%	74.6%
Age	18 - 24	5.7%	94.3%
	25 - 34	4.3%	95.7%
	35 - 44	18.0%	82.0%
	45 - 54	33.1%	66.9%
	55 - 64	44.6%	55.4%
Employed	Yes	19.4%	80.6%
	No	48.1%	51.9%
Income	< \$15K	35.7%	64.3%
	\$15-25K	22.9%	77.1%
	\$25-50K	23.3%	76.7%
	\$50K +	25.0%	75.0%
Education	Less than High School	35.3%	64.7%
	High School Diploma or GED	28.7%	71.3%
	Some College/Technical	21.7%	78.3%
	College Degree or Higher	20.4%	79.6%

		Have you EVER been told that you have some form of arthritis?	
		Yes	No
Total		24.7%	75.3%
Gender	Male	22.7%	77.3%
	Female	26.7%	73.3%
Age	18 - 24	4.8%	95.2%
	25 - 34	4.8%	95.2%
	35 - 44	16.3%	83.7%
	45 - 54	40.8%	59.2%
	55 - 64	55.2%	44.8%
Employed	Yes	18.8%	81.2%
	No	37.4%	62.6%
Income	< \$15K	32.4%	67.6%
	\$15-25K	23.8%	76.2%
	\$25-50K	31.3%	68.8%
	\$50K +	23.3%	76.7%
Education	Less than High School	47.1%	52.9%
	High School Diploma or GED	27.2%	72.8%
	Some College/Technical	23.1%	76.9%
	College Degree or Higher	17.2%	82.8%