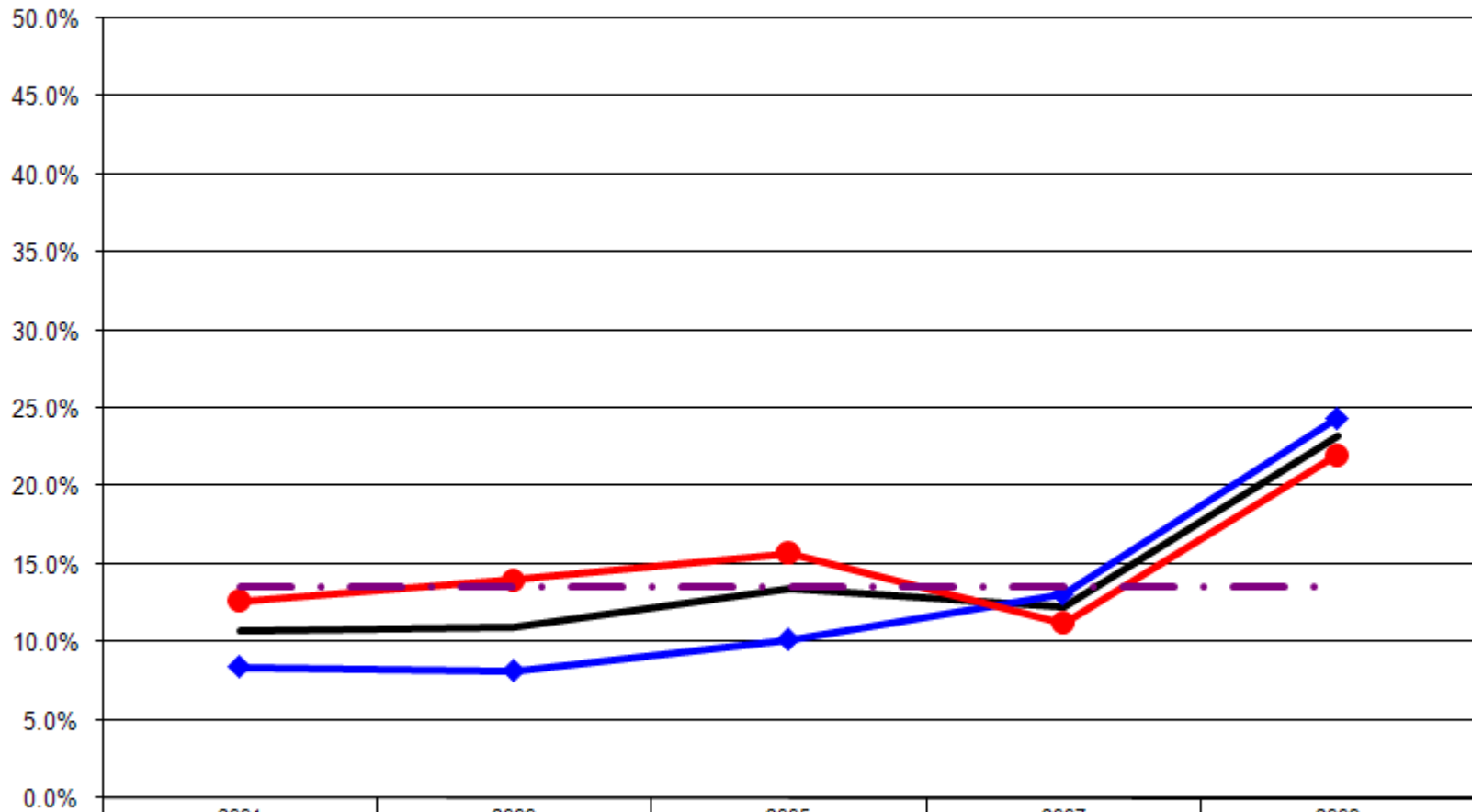


Ages: 18-64 Survey Population Asthma

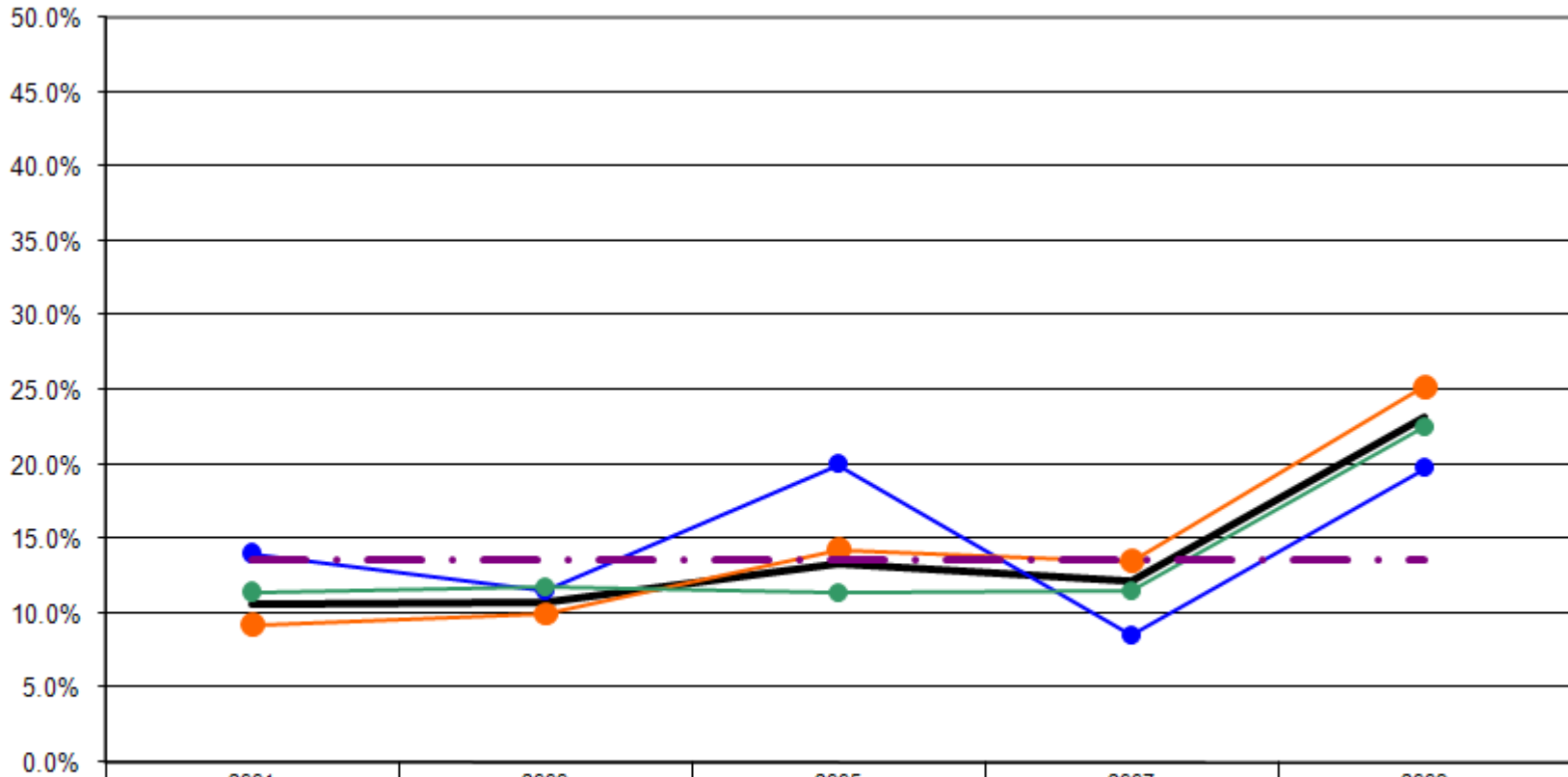
Told Ever Had Asthma By Gender (Ages: 18-64)



	2001	2003	2005	2007	2009
Total	10.7%	10.9%	13.5%	12.2%	23.2%
Male	8.4%	8.1%	10.2%	13.1%	24.4%
Female	12.6%	14.0%	15.7%	11.2%	22.0%
US Total Rate*					13.6%

*Source: 2008 CDC BRFSS

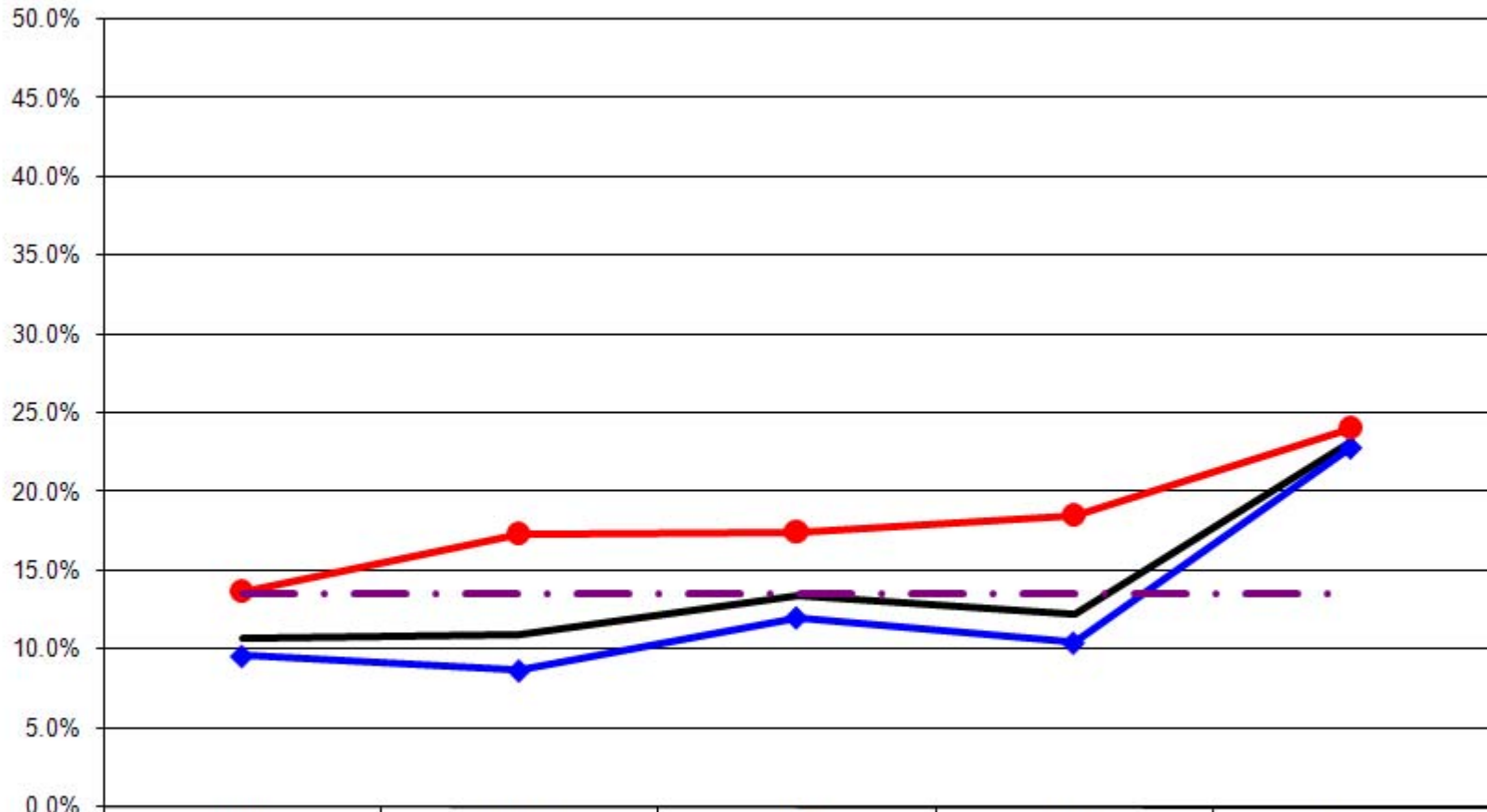
Told Ever Had Asthma By Age
(Ages: 18-64)



	2001	2003	2005	2007	2009
— Total	10.7%	10.9%	13.5%	12.2%	23.2%
● 18-24	14.0%	11.6%	20.0%	8.6%	19.8%
● 25-44	9.2%	9.9%	14.3%	13.5%	25.2%
● 45-64	11.4%	11.8%	11.4%	11.5%	22.5%
- - - US Total Rate*					13.6%

*Source: 2008 CDC BRFSS

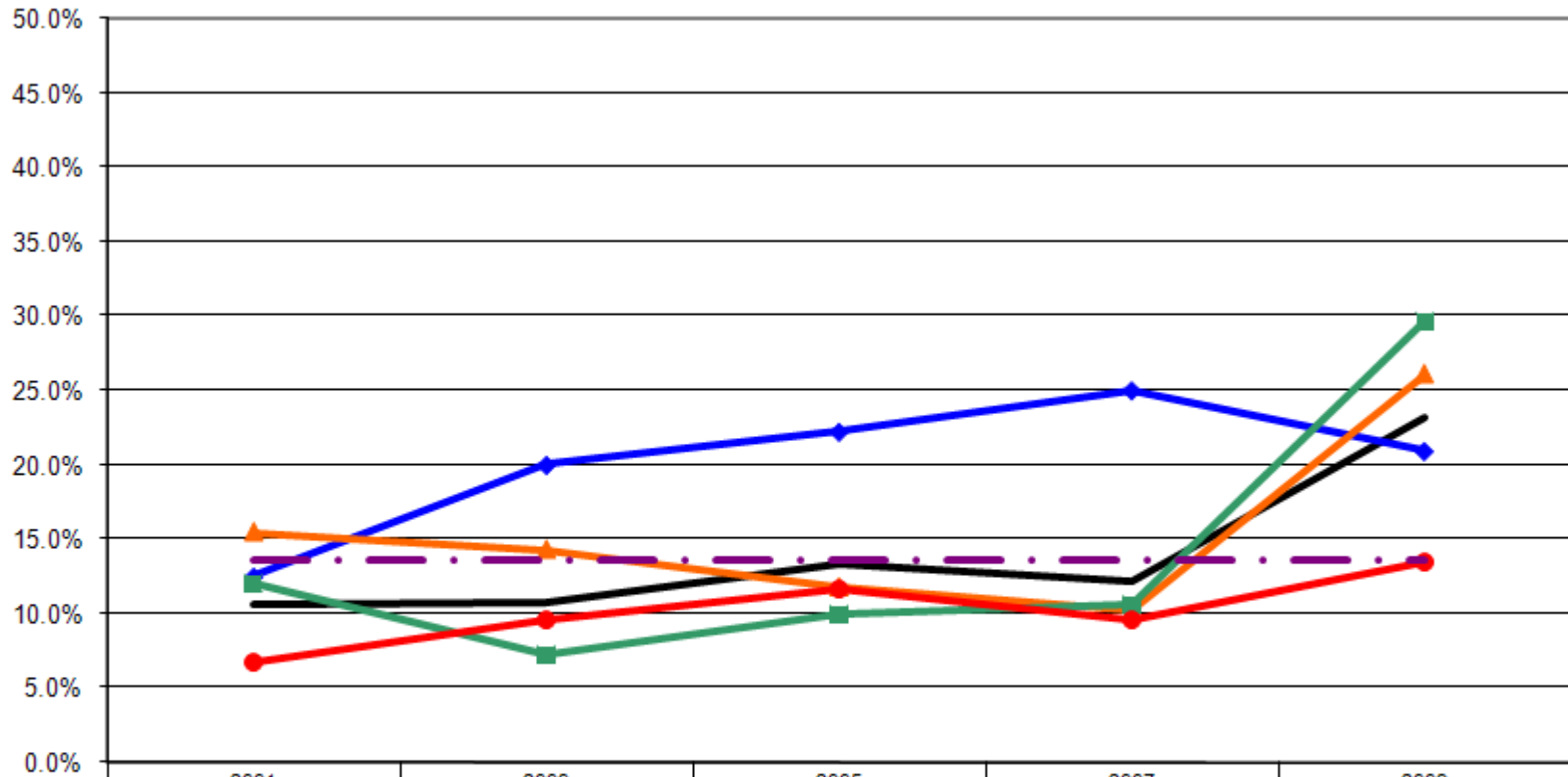
Told Ever Had Asthma By Employment Status (Ages: 18-64)



	2001	2003	2005	2007	2009
— Total	10.7%	10.9%	13.5%	12.2%	23.2%
—◆— Employed	9.6%	8.7%	12.0%	10.4%	22.8%
—●— Not Employed	13.7%	17.4%	17.5%	18.5%	24.1%
- - - - US Total Rate*					13.6%

*Source: 2008 CDC BRFSS

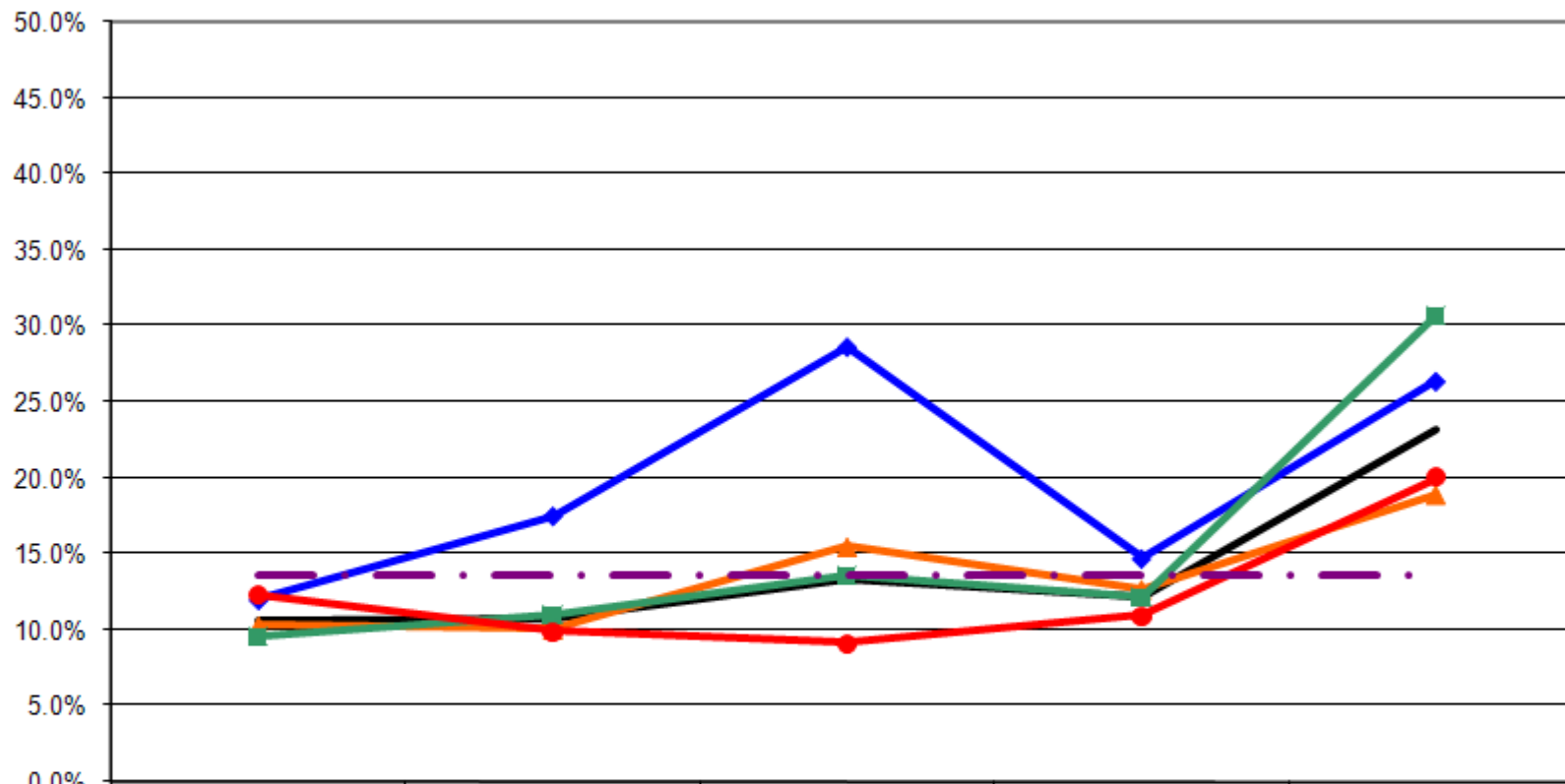
Told Ever Had Asthma By Income (Ages: 18-64)



	2001	2003	2005	2007	2009
— Total	10.7%	10.9%	13.5%	12.2%	23.2%
—◆— <\$15K	12.5%	20.0%	22.2%	25.0%	20.9%
—▲— \$15-25K	15.5%	14.3%	11.8%	10.2%	26.1%
—■— \$25-50K	12.0%	7.2%	9.9%	10.6%	29.6%
—●— \$50K+	6.7%	9.6%	11.7%	9.6%	13.5%
- - - US Total Rate*					13.6%

*Source: 2008 CDC BRFSS

Told Ever Had Asthma By Education (Ages: 18-64)



	2001	2003	2005	2007	2009
Total	10.7%	10.9%	13.5%	12.2%	23.2%
<HS	12.0%	17.5%	28.6%	14.7%	26.3%
HS or GED	10.3%	10.1%	15.5%	12.7%	18.9%
Some College	9.6%	11.0%	13.6%	12.2%	30.6%
College Degree +	12.3%	9.9%	9.2%	10.9%	20.0%
US Total Rate*					13.6%

*Source: 2008 CDC BRFSS

Interview Year 2001

		Have you ever been told that you had asthma?	
		Yes	No
Total		10.7%	89.3%
Gender	Male	8.4%	91.6%
	Female	12.6%	87.4%
Age	18 - 24	14.0%	86.0%
	25 - 34	7.6%	92.4%
	35 - 44	10.3%	89.7%
	45 - 54	12.3%	87.7%
	55 - 64	10.2%	89.8%
Employed	Yes	9.6%	90.4%
	No	13.7%	86.3%
Income	< \$15K	12.5%	87.5%
	\$15-25K	15.5%	84.5%
	\$25-50K	12.0%	88.0%
	\$50K +	6.7%	93.3%
Education	Less than High School	12.0%	88.0%
	High School Diploma or GED	10.3%	89.7%
	Some College/Technical	9.6%	90.4%
	College Degree or Higher	12.3%	87.7%

Interview Year 2003

		Have you ever been told that you had asthma?	
		Yes	No
Total		10.9%	89.1%
Gender	Male	8.1%	91.9%
	Female	14.0%	86.0%
Age	18 - 24	11.6%	88.4%
	25 - 34	8.9%	91.1%
	35 - 44	10.8%	89.2%
	45 - 54	16.4%	83.6%
	55 - 64	5.9%	94.1%
Employed	Yes	8.7%	91.3%
	No	17.4%	82.6%
Income	< \$15K	20.0%	80.0%
	\$15-25K	14.3%	85.7%
	\$25-50K	7.2%	92.8%
	\$50K +	9.6%	90.4%
Education	Less than High School	17.5%	82.5%
	High School Diploma or GED	10.1%	89.9%
	Some College/Technical	11.0%	89.0%
	College Degree or Higher	9.9%	90.1%

Interview Year 2005

		Have you ever been told that you had asthma?	
		Yes	No
Total		13.5%	86.5%
Gender	Male	10.2%	89.8%
	Female	15.7%	84.3%
Age	18 - 24	20.0%	80.0%
	25 - 34	17.2%	82.8%
	35 - 44	12.2%	87.8%
	45 - 54	10.9%	89.1%
	55 - 64	12.0%	88.0%
Employed	Yes	12.0%	88.0%
	No	17.5%	82.5%
Income	< \$15K	22.2%	77.8%
	\$15-25K	11.8%	88.2%
	\$25-50K	9.9%	90.1%
	\$50K +	11.7%	88.3%
Education	Less than High School	28.6%	71.4%
	High School Diploma or GED	15.5%	84.5%
	Some College/Technical	13.6%	86.4%
	College Degree or Higher	9.2%	90.8%

Interview Year 2007

		Have you ever been told that you had asthma?	
		Yes	No
Total		12.2%	87.8%
Gender	Male	13.1%	86.9%
	Female	11.2%	88.8%
Age	18 - 24	8.6%	91.4%
	25 - 34	17.1%	82.9%
	35 - 44	10.2%	89.8%
	45 - 54	9.7%	90.3%
	55 - 64	13.4%	86.6%
Employed	Yes	10.4%	89.6%
	No	18.5%	81.5%
Income	< \$15K	25.0%	75.0%
	\$15-25K	10.2%	89.8%
	\$25-50K	10.6%	89.4%
	\$50K +	9.6%	90.4%
Education	Less than High School	14.7%	85.3%
	High School Diploma or GED	12.7%	87.3%
	Some College/Technical	12.2%	87.8%
	College Degree or Higher	10.9%	89.1%

		Have you ever been told that you had asthma?	
		Yes	No
Total		23.2%	76.8%
Gender	Male	24.4%	75.6%
	Female	22.0%	78.0%
Age	18 - 24	19.8%	80.2%
	25 - 34	29.7%	70.3%
	35 - 44	20.7%	79.3%
	45 - 54	20.0%	80.0%
	55 - 64	25.2%	74.8%
Employed	Yes	22.8%	77.2%
	No	24.1%	75.9%
Income	< \$15K	20.9%	79.1%
	\$15-25K	26.1%	73.9%
	\$25-50K	29.6%	70.4%
	\$50K +	13.5%	86.5%
Education	Less than High School	26.3%	73.7%
	High School Diploma or GED	18.9%	81.1%
	Some College/Technical	30.6%	69.4%
	College Degree or Higher	20.0%	80.0%