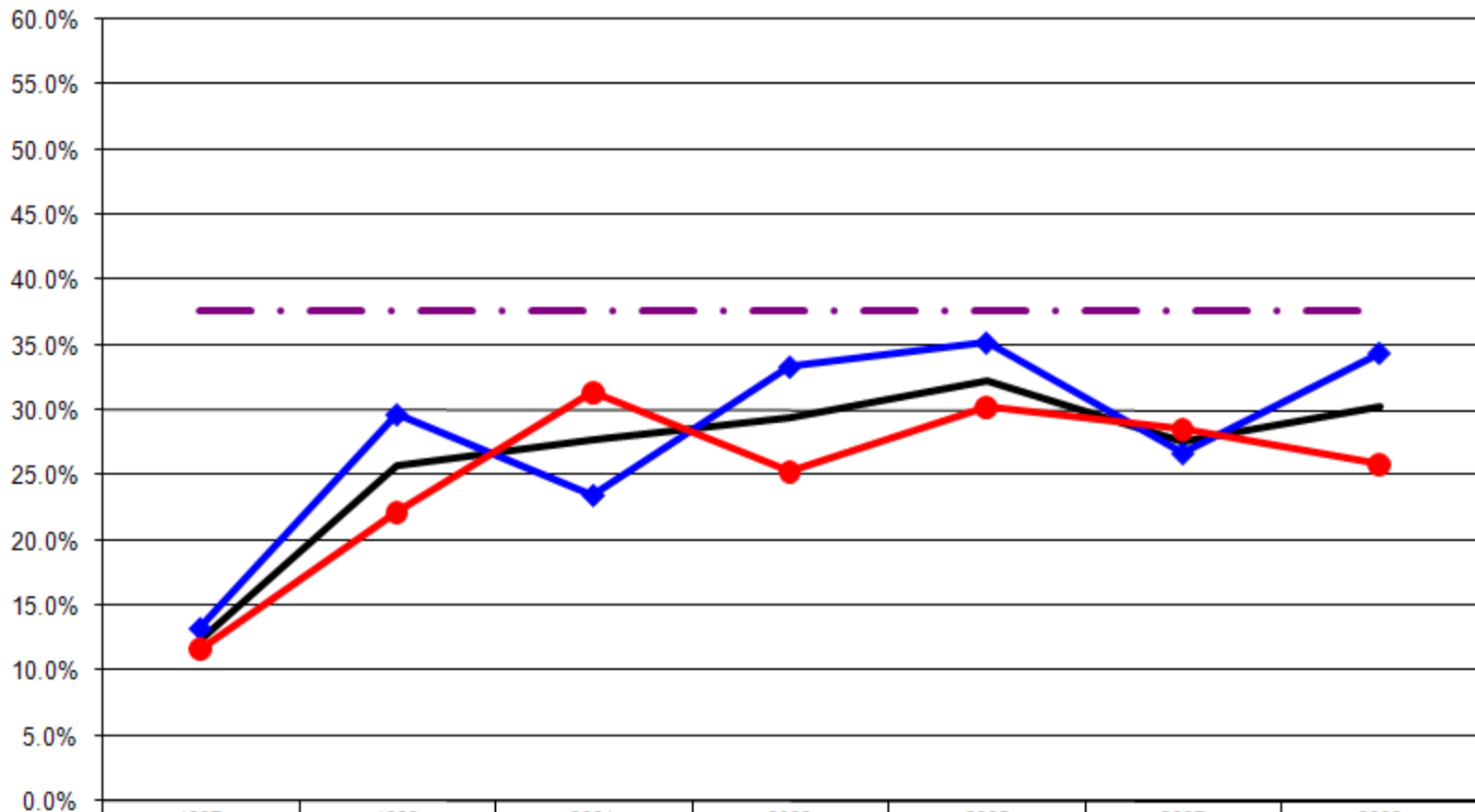


Ages: 18-64 Survey Population Blood Cholesterol

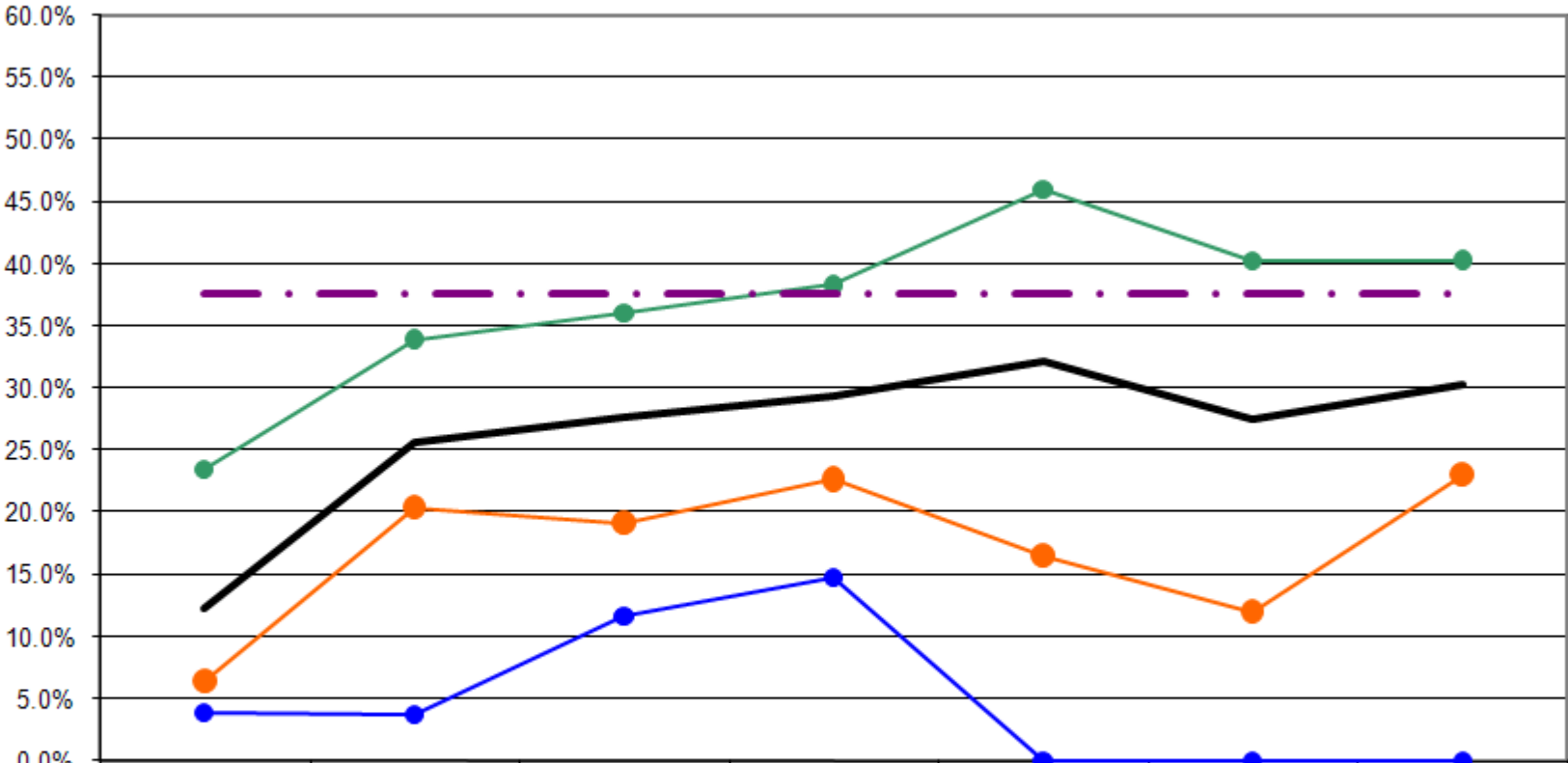
Had Blood Cholesterol Checked and Told High By Gender (Ages: 18-64)



	1997	1999	2001	2003	2005	2007	2009
— Total	12.3%	25.7%	27.7%	29.5%	32.2%	27.6%	30.3%
—◆ Male	13.3%	29.7%	23.5%	33.3%	35.2%	26.7%	34.4%
—● Female	11.6%	22.2%	31.4%	25.3%	30.2%	28.6%	25.9%
-.-.- US Total Rate*							37.6%

*Source: 2007 CDC BRFSS

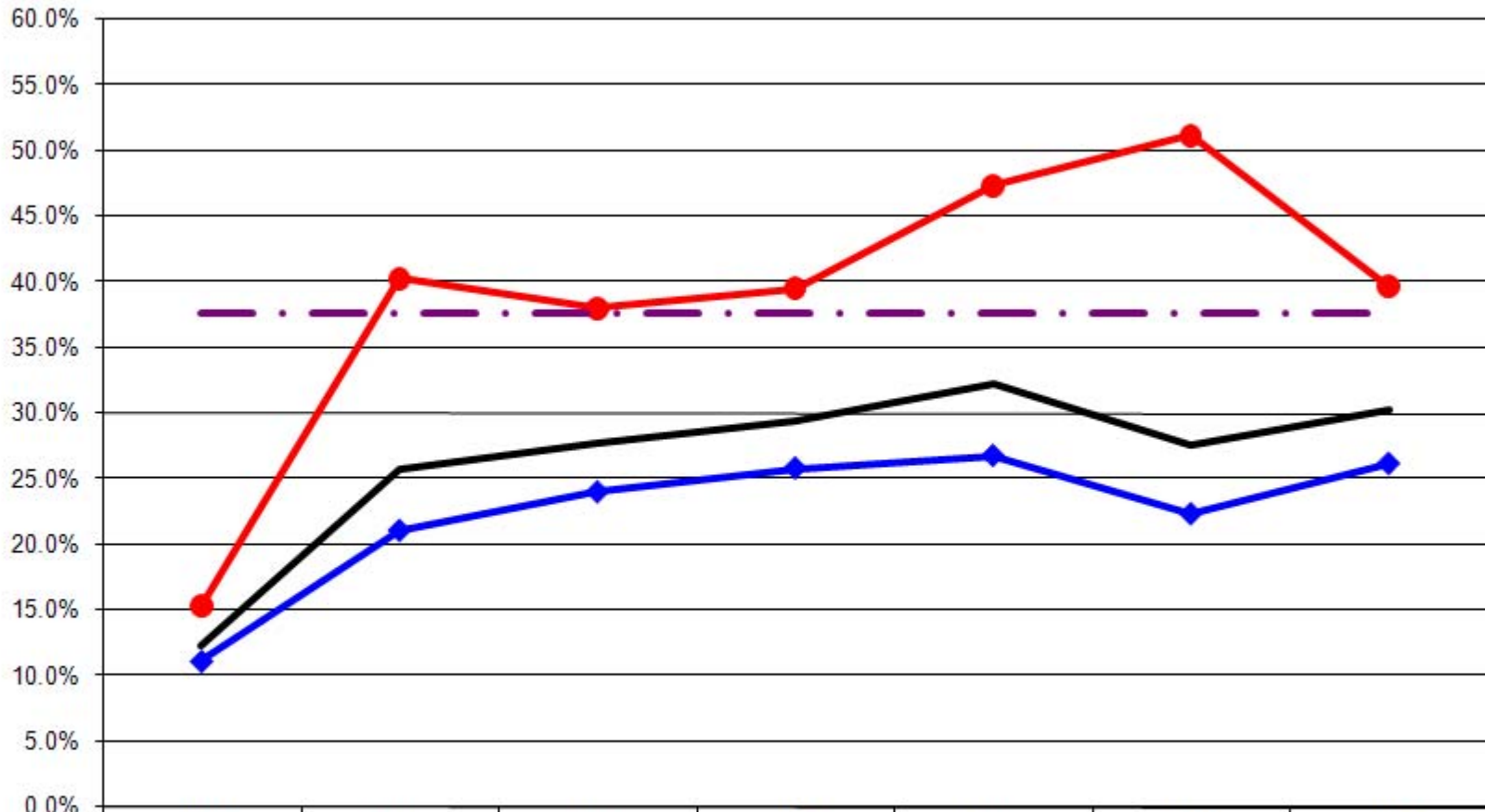
Had Blood Cholesterol Checked and Told High By Age (Ages: 18-64)



	1997	1999	2001	2003	2005	2007	2009
— Total	12.3%	25.7%	27.7%	29.5%	32.2%	27.6%	30.3%
● 18-24	3.8%	3.7%	11.8%	14.8%	0.0%	0.0%	0.0%
● 25-44	6.4%	20.4%	19.2%	22.6%	16.6%	12.1%	23.0%
● 45-64	23.5%	34.0%	36.0%	38.3%	46.0%	40.2%	40.3%
- - - - US Total Rate*							37.6%

*Source: 2007 CDC BRFSS

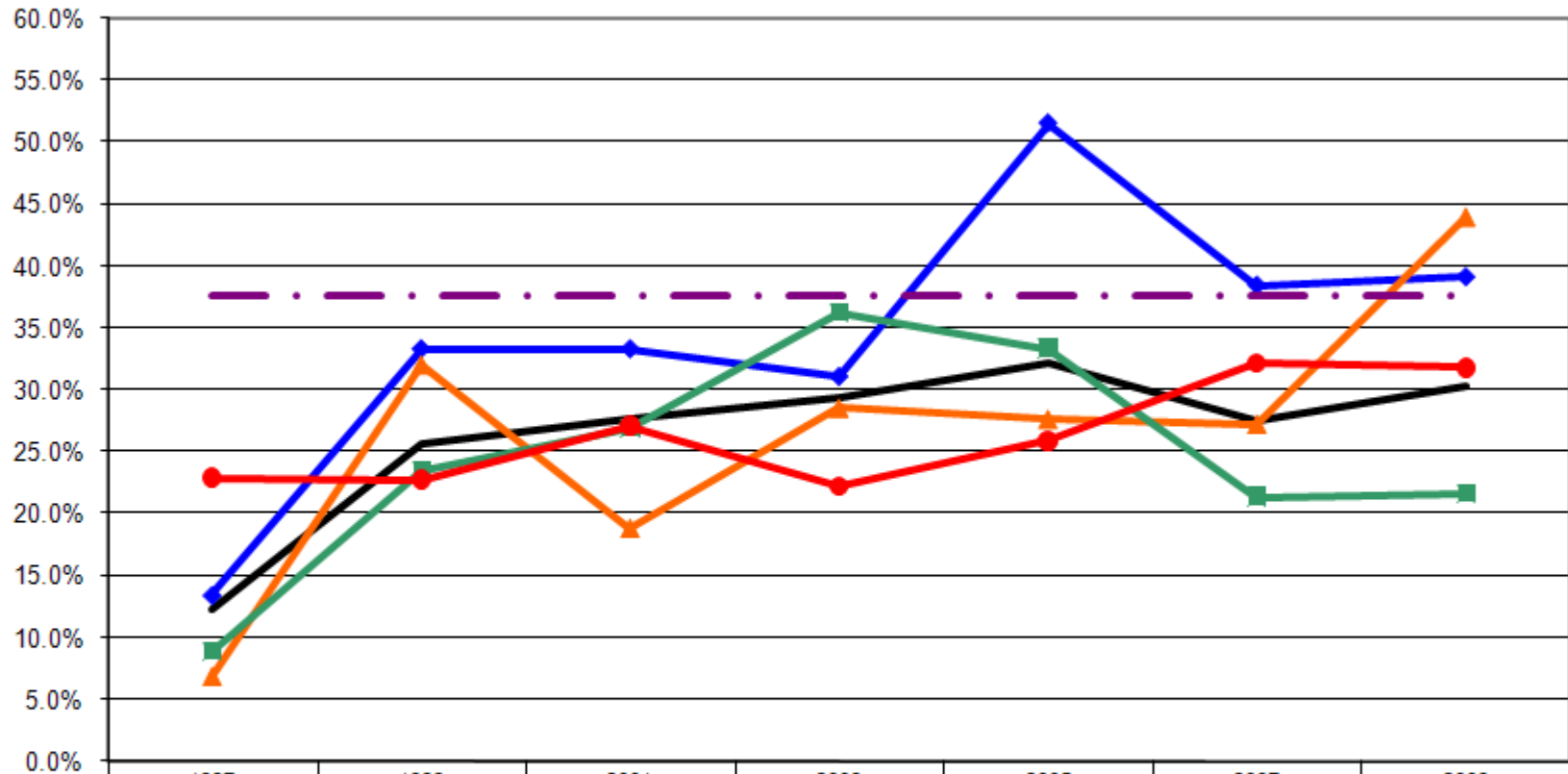
Had Blood Cholesterol Checked and Told High By Employment Status (Ages: 18-64)



	1997	1999	2001	2003	2005	2007	2009
— Total	12.3%	25.7%	27.7%	29.5%	32.2%	27.6%	30.3%
—◆— Employed	11.2%	21.1%	24.0%	25.8%	26.8%	22.4%	26.2%
—●— Not Employed	15.3%	40.3%	38.0%	39.5%	47.4%	51.2%	39.6%
- - - - US Total Rate*							37.6%

*Source: 2007 CDC BRFSS

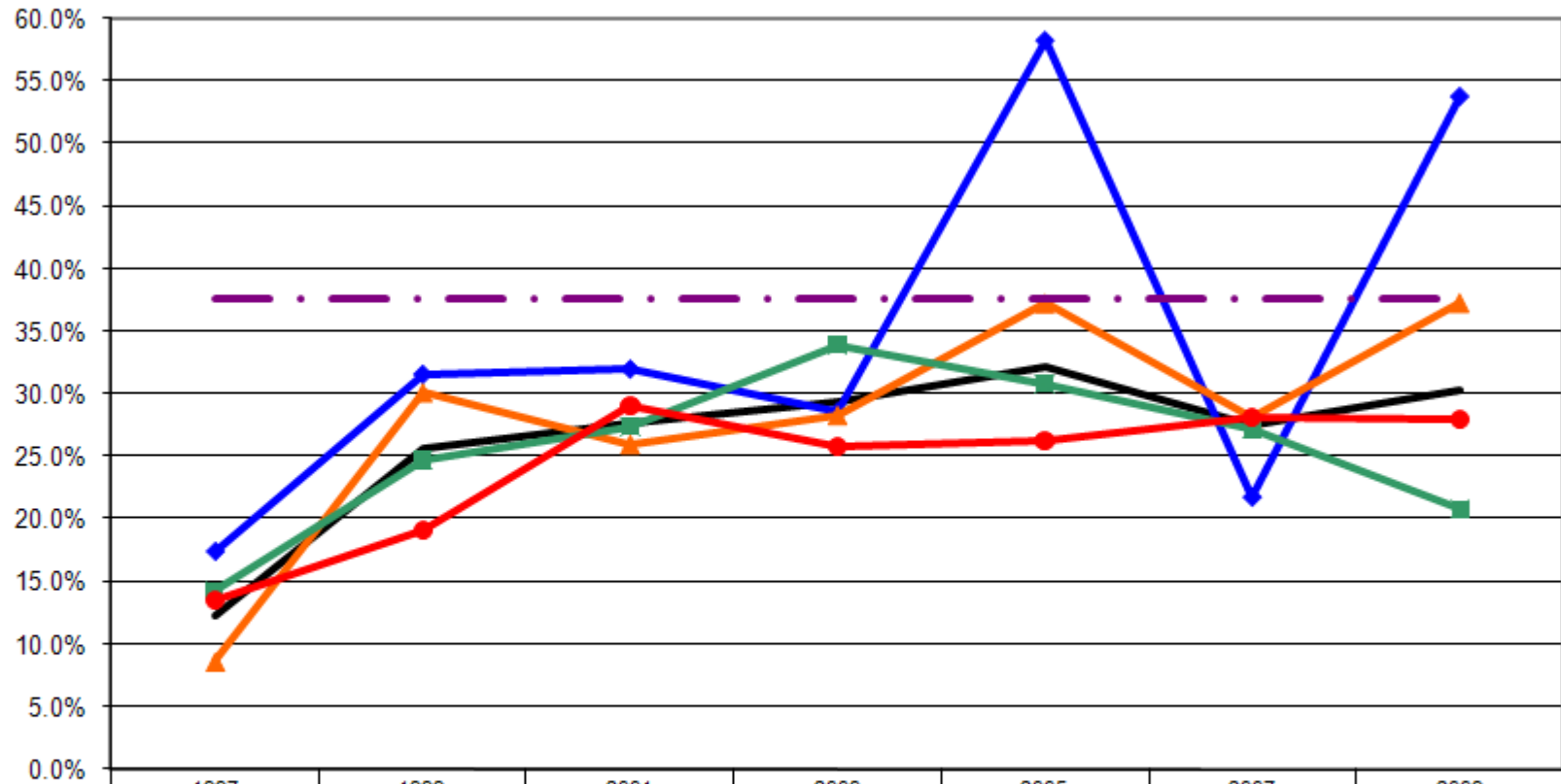
Had Blood Cholesterol Checked and Told High By Income (Ages: 18-64)



	1997	1999	2001	2003	2005	2007	2009
— Total	12.3%	25.7%	27.7%	29.5%	32.2%	27.6%	30.3%
—◆— <\$15K	13.5%	33.3%	33.3%	31.1%	51.5%	38.5%	39.1%
—▲— \$15-25K	6.9%	32.1%	18.9%	28.6%	27.7%	27.3%	44.0%
—■— \$25-50K	8.9%	23.5%	26.9%	36.2%	33.3%	21.4%	21.6%
—●— \$50K+	22.9%	22.7%	27.1%	22.2%	25.9%	32.1%	31.7%
- - - - - US Total Rate*							37.6%

*Source: 2007 CDC BRFSS

Had Blood Cholesterol Checked and Told High By Education (Ages: 18-64)



	1997	1999	2001	2003	2005	2007	2009
— Total	12.3%	25.7%	27.7%	29.5%	32.2%	27.6%	30.3%
—◆— <HS	17.4%	31.6%	32.0%	28.6%	58.3%	21.7%	53.8%
—▲— HS or GED	8.6%	30.2%	26.0%	28.3%	37.3%	28.1%	37.3%
—■— Some College	14.3%	24.7%	27.4%	33.9%	30.8%	27.2%	20.8%
—●— College Degree +	13.6%	19.1%	29.0%	25.8%	26.2%	28.1%	28.0%
— · — · — US Total Rate*							37.6%

*Source: 2007 CDC BRFSS

Interview Year 1997

		Have you ever been told that you have high blood cholesterol?	
		Yes	No
Total		12.3%	87.7%
Gender	Male	13.3%	86.7%
	Female	11.6%	88.4%
Age	18 - 24	3.8%	96.2%
	25 - 34	6.3%	93.8%
	35 - 44	6.6%	93.4%
	45 - 54	21.4%	78.6%
	55 - 64	25.9%	74.1%
Employed	Yes	11.2%	88.8%
	No	15.3%	84.7%
Income	< \$15K	13.5%	86.5%
	\$15-25K	6.9%	93.1%
	\$25-50K	8.9%	91.1%
	\$50K +	22.9%	77.1%
Education	Less than High School	17.4%	82.6%
	High School Diploma or GED	8.6%	91.4%
	Some College/Technical	14.3%	85.7%
	College Degree or Higher	13.6%	86.4%

Interview Year 1999

		Have you ever been told that you have high blood cholesterol?	
		Yes	No
Total		25.7%	74.3%
Gender	Male	29.7%	70.3%
	Female	22.2%	77.8%
Age	18 - 24	3.7%	96.3%
	25 - 34	14.3%	85.7%
	35 - 44	23.7%	76.3%
	45 - 54	26.6%	73.4%
	55 - 64	44.1%	55.9%
Employed	Yes	21.1%	78.9%
	No	40.3%	59.7%
Income	< \$15K	33.3%	66.7%
	\$15-25K	32.1%	67.9%
	\$25-50K	23.5%	76.5%
	\$50K +	22.7%	77.3%
Education	Less than High School	31.6%	68.4%
	High School Diploma or GED	30.2%	69.8%
	Some College/Technical	24.7%	75.3%
	College Degree or Higher	19.1%	80.9%

Interview Year 2001

		Have you ever been told that you have high blood cholesterol?	
		Yes	No
Total		27.7%	72.3%
Gender	Male	23.5%	76.5%
	Female	31.4%	68.6%
Age	18 - 24	11.8%	88.2%
	25 - 34	13.0%	87.0%
	35 - 44	21.9%	78.1%
	45 - 54	32.1%	67.9%
	55 - 64	41.9%	58.1%
Employed	Yes	24.0%	76.0%
	No	38.0%	62.0%
Income	< \$15K	33.3%	66.7%
	\$15-25K	18.9%	81.1%
	\$25-50K	26.9%	73.1%
	\$50K +	27.1%	72.9%
Education	Less than High School	32.0%	68.0%
	High School Diploma or GED	26.0%	74.0%
	Some College/Technical	27.4%	72.6%
	College Degree or Higher	29.0%	71.0%

Interview Year 2003

		Have you ever been told that you have high blood cholesterol?	
		Yes	No
Total		29.5%	70.5%
Gender	Male	33.3%	66.7%
	Female	25.3%	74.7%
Age	18 - 24	14.8%	85.2%
	25 - 34	17.2%	82.8%
	35 - 44	26.3%	73.7%
	45 - 54	33.0%	67.0%
	55 - 64	44.7%	55.3%
Employed	Yes	25.8%	74.2%
	No	39.5%	60.5%
Income	< \$15K	31.1%	68.9%
	\$15-25K	28.6%	71.4%
	\$25-50K	36.2%	63.8%
	\$50K +	22.2%	77.8%
Education	Less than High School	28.6%	71.4%
	High School Diploma or GED	28.3%	71.7%
	Some College/Technical	33.9%	66.1%
	College Degree or Higher	25.8%	74.2%

Interview Year 2005

		Have you ever been told that you have high blood cholesterol?	
		Yes	No
Total		32.2%	67.8%
Gender	Male	35.2%	64.8%
	Female	30.2%	69.8%
Age	18 - 24	0.0%	100.0%
	25 - 34	17.6%	82.4%
	35 - 44	16.0%	84.0%
	45 - 54	41.5%	58.5%
	55 - 64	51.1%	48.9%
Employed	Yes	26.8%	73.2%
	No	47.4%	52.6%
Income	< \$15K	51.5%	48.5%
	\$15-25K	27.7%	72.3%
	\$25-50K	33.3%	66.7%
	\$50K +	25.9%	74.1%
Education	Less than High School	58.3%	41.7%
	High School Diploma or GED	37.3%	62.7%
	Some College/Technical	30.8%	69.2%
	College Degree or Higher	26.2%	73.8%

Interview Year 2007

		Have you ever been told that you have high blood cholesterol?	
		Yes	No
Total		27.6%	72.4%
Gender	Male	26.7%	73.3%
	Female	28.6%	71.4%
Age	18 - 24	0.0%	100.0%
	25 - 34	6.4%	93.6%
	35 - 44	16.3%	83.7%
	45 - 54	37.6%	62.4%
	55 - 64	42.7%	57.3%
Employed	Yes	22.4%	77.6%
	No	51.2%	48.8%
Income	< \$15K	38.5%	61.5%
	\$15-25K	27.3%	72.7%
	\$25-50K	21.4%	78.6%
	\$50K +	32.1%	67.9%
Education	Less than High School	21.7%	78.3%
	High School Diploma or GED	28.1%	71.9%
	Some College/Technical	27.2%	72.8%
	College Degree or Higher	28.1%	71.9%

Interview Year 2009

		Have you ever been told that you have high blood cholesterol?	
		Yes	No
Total		30.3%	69.7%
Gender	Male	34.4%	65.6%
	Female	25.9%	74.1%
Age	18 - 24	0.0%	100.0%
	25 - 34	18.2%	81.8%
	35 - 44	26.7%	73.3%
	45 - 54	37.8%	62.2%
	55 - 64	42.7%	57.3%
Employed	Yes	26.2%	73.8%
	No	39.6%	60.4%
Income	< \$15K	39.1%	60.9%
	\$15-25K	44.0%	56.0%
	\$25-50K	21.6%	78.4%
	\$50K +	31.7%	68.3%
Education	Less than High School	53.8%	46.2%
	High School Diploma or GED	37.3%	62.7%
	Some College/Technical	20.8%	79.2%
	College Degree or Higher	28.0%	72.0%