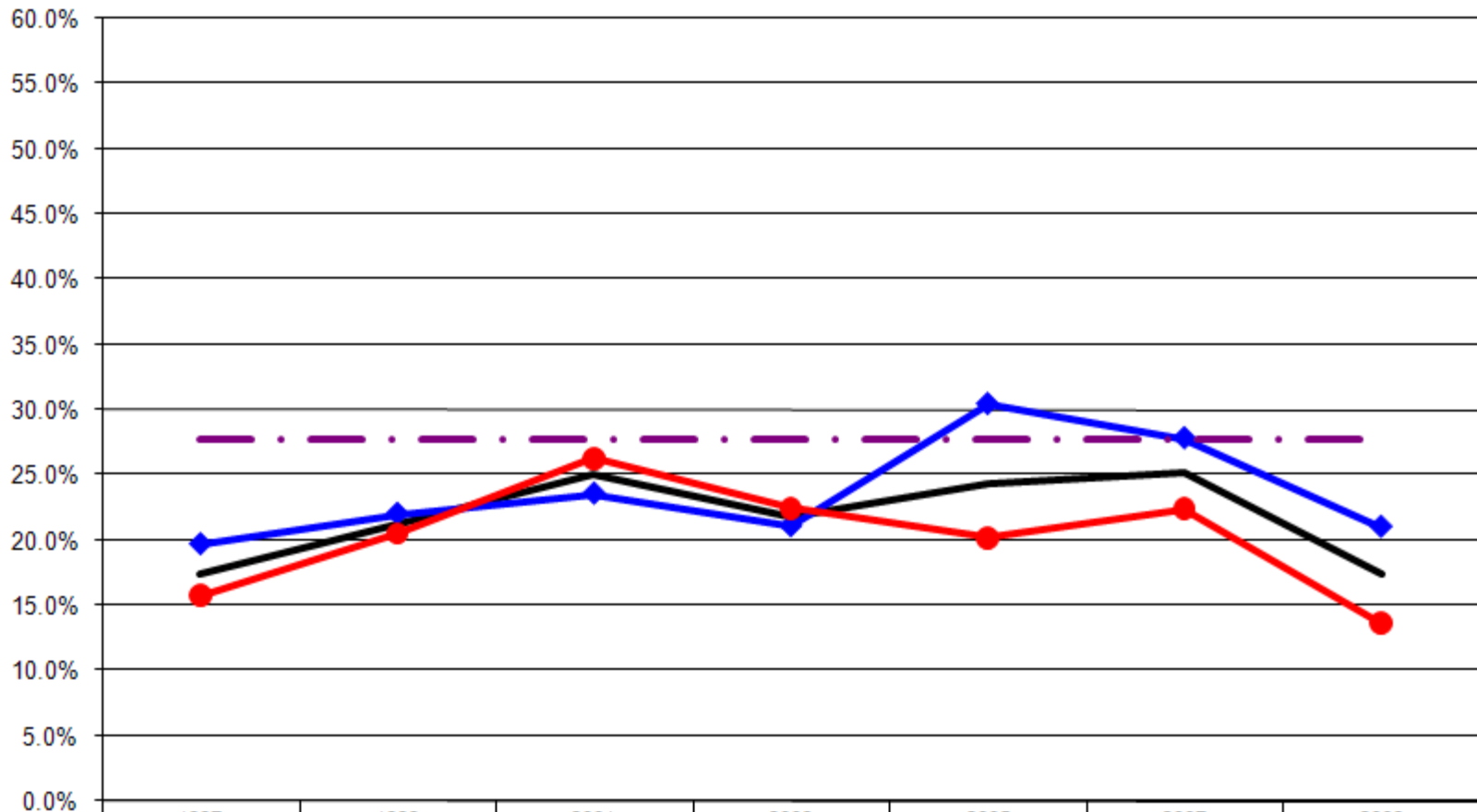


## Ages: 18-64 Survey Population Hypertension

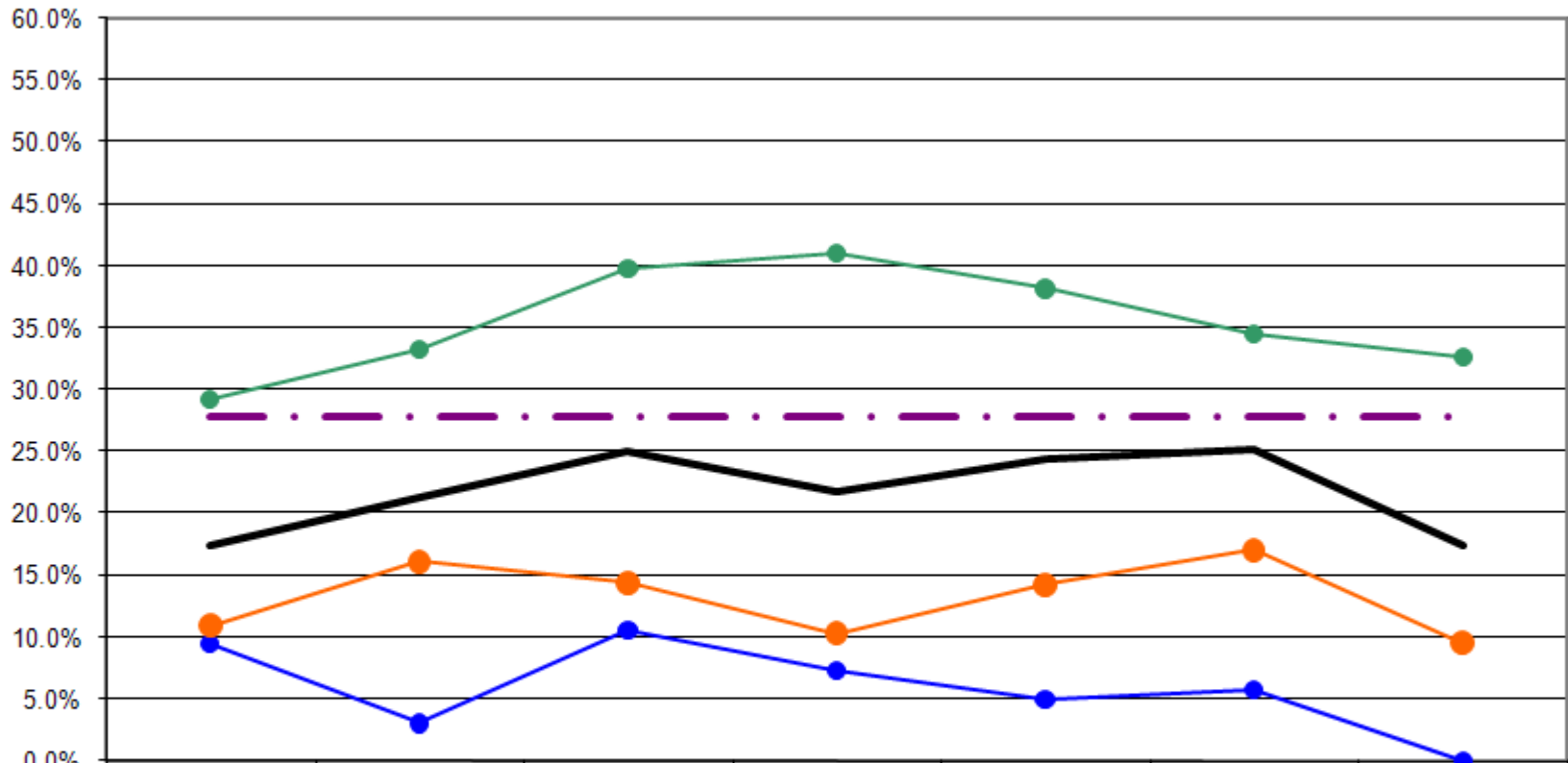
### Have High Blood Pressure By Gender (Ages: 18-64)



	1997	1999	2001	2003	2005	2007	2009
— Total	17.4%	21.2%	25.0%	21.7%	24.4%	25.2%	17.4%
—◆ Male	19.7%	22.0%	23.6%	21.1%	30.5%	27.8%	21.1%
—● Female	15.7%	20.5%	26.3%	22.5%	20.2%	22.4%	13.6%
- - - US Total Rate*							27.8%

\*Source: 2007 CDC BRFSS

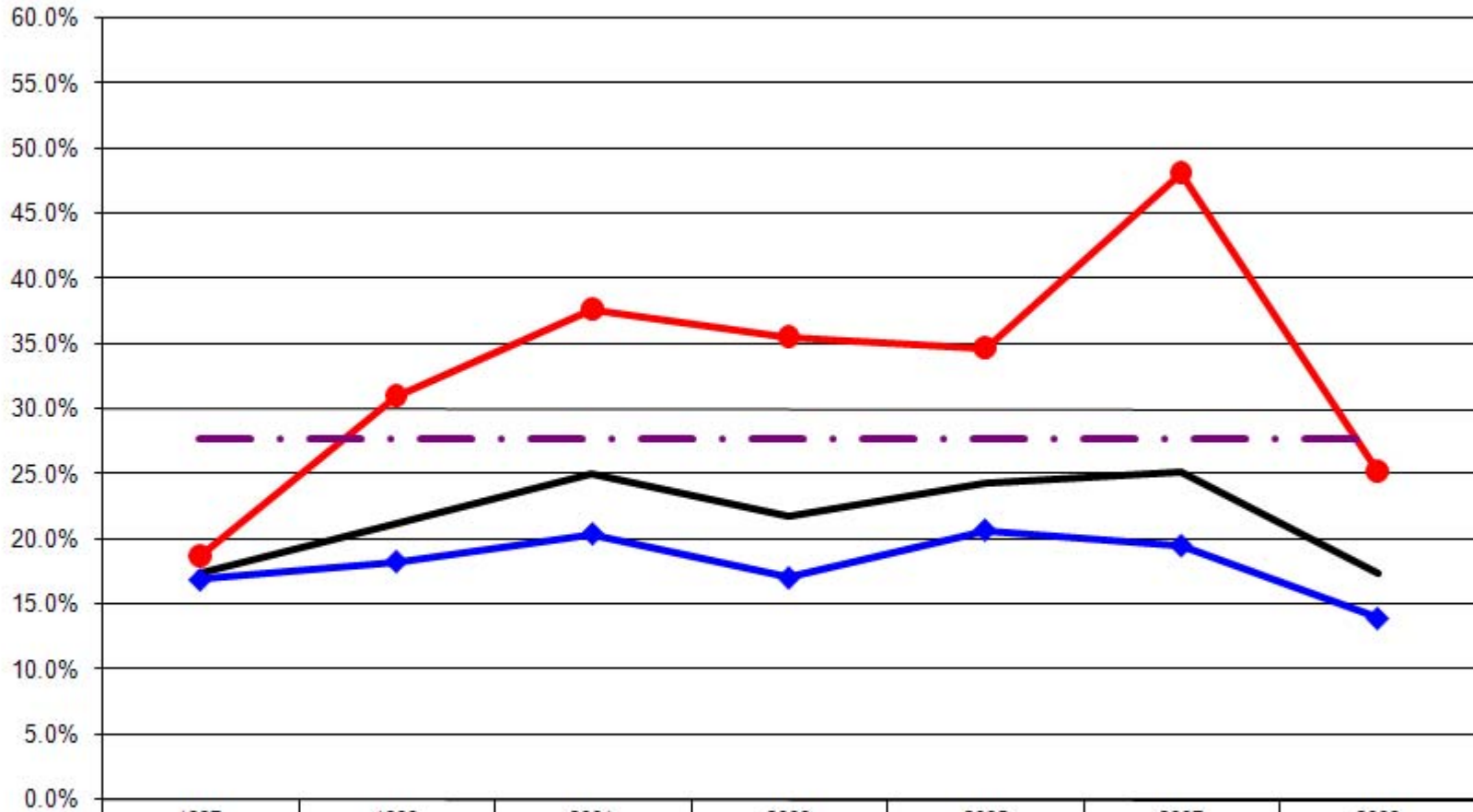
### Have High Blood Pressure By Age (Ages: 18-64)



	1997	1999	2001	2003	2005	2007	2009
— Total	17.4%	21.2%	25.0%	21.7%	24.4%	25.2%	17.4%
● 18-24	9.4%	3.0%	10.5%	7.2%	5.0%	5.7%	0.0%
● 25-44	10.9%	16.1%	14.4%	10.3%	14.3%	17.1%	9.5%
● 45-64	29.3%	33.3%	39.8%	41.0%	38.2%	34.5%	32.7%
— · · · US Total Rate*							27.8%

\*Source: 2007 CDC BRFSS

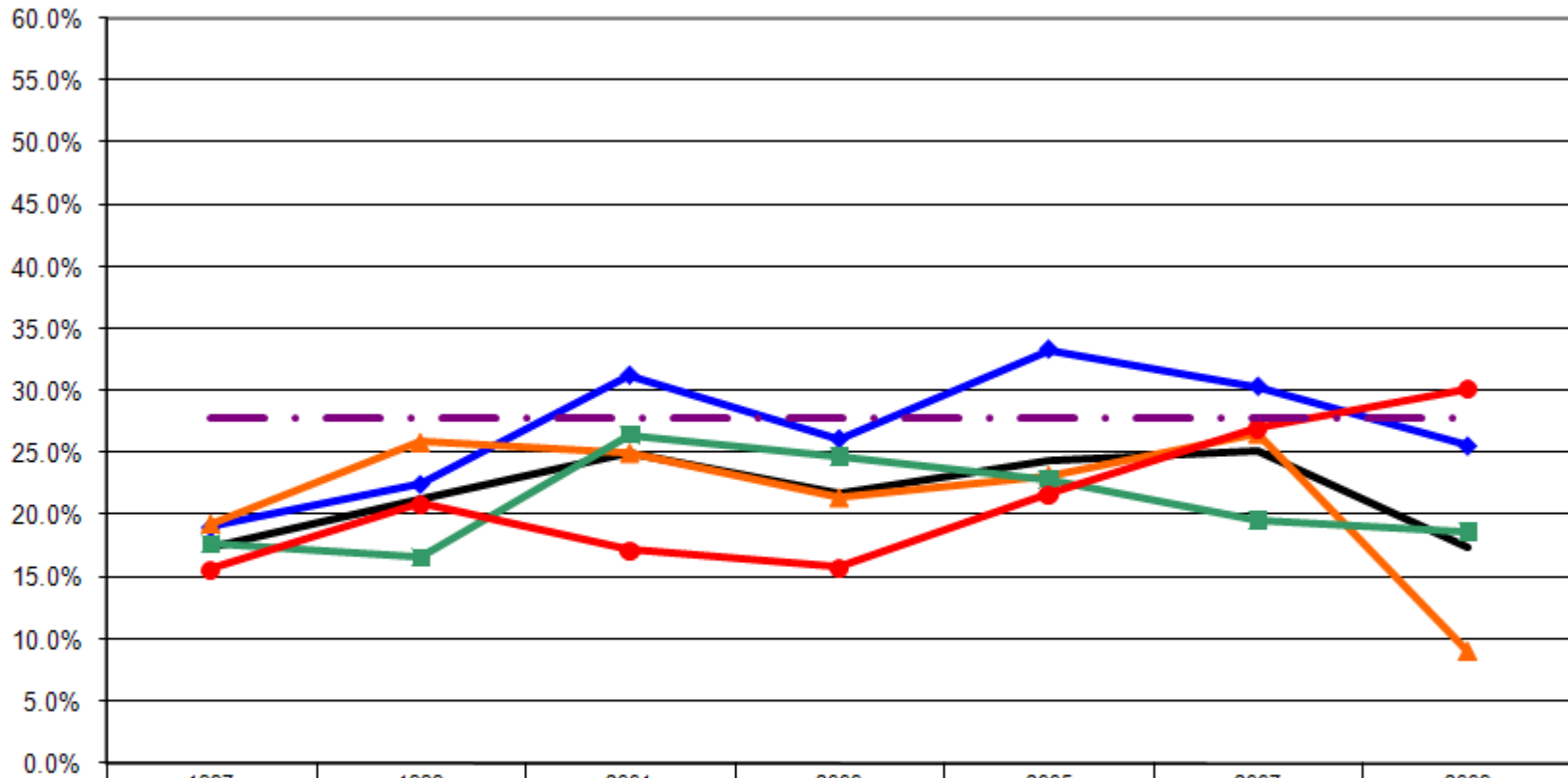
### Have High Blood Pressure By Employment Status (Ages: 18-64)



	1997	1999	2001	2003	2005	2007	2009
— Total	17.4%	21.2%	25.0%	21.7%	24.4%	25.2%	17.4%
—◆— Employed	16.9%	18.3%	20.5%	17.1%	20.7%	19.6%	14.0%
—●— Not Employed	18.7%	31.1%	37.7%	35.5%	34.6%	48.1%	25.2%
— · · · — US Total Rate*							27.8%

\*Source: 2007 CDC BRFSS

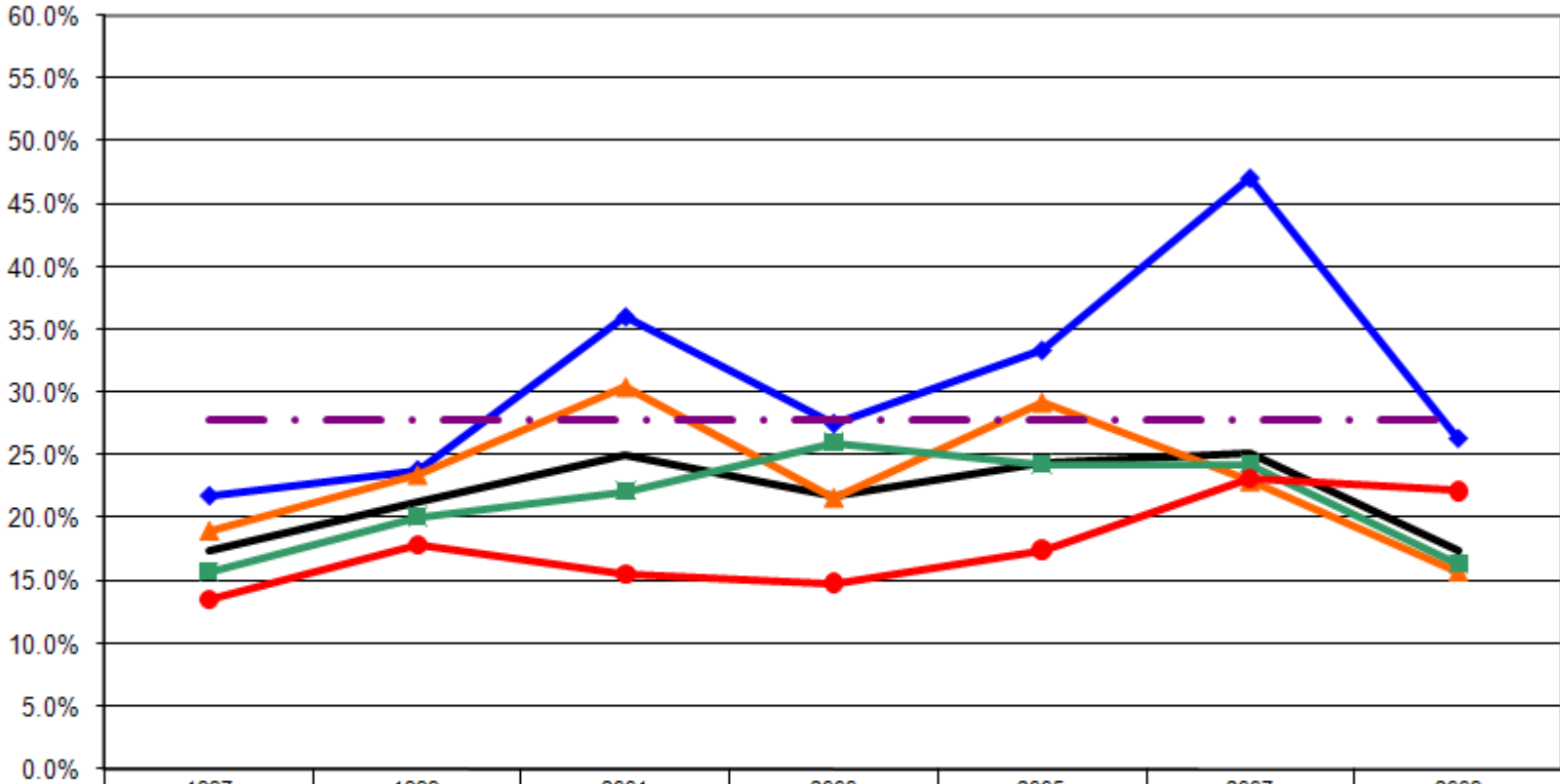
### Have High Blood Pressure By Income (Ages: 18-64)



	1997	1999	2001	2003	2005	2007	2009
— Total	17.4%	21.2%	25.0%	21.7%	24.4%	25.2%	17.4%
—◆— <\$15K	19.0%	22.5%	31.3%	26.2%	33.3%	30.4%	25.6%
—▲— \$15-25K	19.3%	25.8%	25.0%	21.4%	23.2%	26.5%	9.1%
—■— \$25-50K	17.7%	16.6%	26.4%	24.7%	22.9%	19.6%	18.7%
—●— \$50K+	15.6%	20.9%	17.2%	15.8%	21.6%	27.0%	30.1%
-.-.- US Total Rate*							27.8%

\*Source: 2007 CDC BRFSS

### Have High Blood Pressure By Education (Ages: 18-64)



	1997	1999	2001	2003	2005	2007	2009
— Total	17.4%	21.2%	25.0%	21.7%	24.4%	25.2%	17.4%
—◆— <HS	21.7%	23.8%	36.0%	27.5%	33.3%	47.1%	26.3%
—▲— HS or GED	19.0%	23.4%	30.4%	21.6%	29.2%	22.9%	15.7%
—■— Some College	15.7%	20.1%	22.2%	26.0%	24.3%	24.3%	16.4%
—●— College Degree +	13.6%	17.9%	15.6%	14.9%	17.5%	23.2%	22.2%
-.-.- US Total Rate*							27.8%

\*Source: 2007 CDC BRFSS

Interview Year 1997

		Have you ever been told that you have high blood pressure?			
		Yes	Yes, female told during pregnancy	No	Told borderline high or pre-hypertensive
<b>Total</b>		<b>17.4%</b>	<b>0.0%</b>	<b>82.6%</b>	<b>0.0%</b>
Gender	Male	19.7%	0.0%	80.3%	0.0%
	Female	15.7%	0.0%	84.3%	0.0%
Age	18 - 24	9.4%	0.0%	90.6%	0.0%
	25 - 34	5.4%	0.0%	94.6%	0.0%
	35 - 44	16.2%	0.0%	83.8%	0.0%
	45 - 54	27.3%	0.0%	72.7%	0.0%
	55 - 64	31.7%	0.0%	68.3%	0.0%
Employed	Yes	16.9%	0.0%	83.1%	0.0%
	No	18.7%	0.0%	81.3%	0.0%
Income	< \$15K	19.0%	0.0%	81.0%	0.0%
	\$15-25K	19.3%	0.0%	80.7%	0.0%
	\$25-50K	17.7%	0.0%	82.3%	0.0%
	\$50K +	15.6%	0.0%	84.4%	0.0%
Education	Less than High School	21.7%	0.0%	78.3%	0.0%
	High School Diploma or GED	19.0%	0.0%	81.0%	0.0%
	Some College/Technical	15.7%	0.0%	84.3%	0.0%
	College Degree or Higher	13.6%	0.0%	86.4%	0.0%

Interview Year 1999

		Have you ever been told that you have high blood pressure?			
		Yes	Yes, female told during pregnancy	No	Told borderline high or pre-hypertensive
<b>Total</b>		<b>21.2%</b>	<b>0.0%</b>	<b>78.8%</b>	<b>0.0%</b>
Gender	Male	22.0%	0.0%	78.0%	0.0%
	Female	20.5%	0.0%	79.5%	0.0%
Age	18 - 24	3.0%	0.0%	97.0%	0.0%
	25 - 34	8.3%	0.0%	91.7%	0.0%
	35 - 44	22.3%	0.0%	77.7%	0.0%
	45 - 54	28.3%	0.0%	71.7%	0.0%
	55 - 64	40.5%	0.0%	59.5%	0.0%
Employed	Yes	18.3%	0.0%	81.7%	0.0%
	No	31.1%	0.0%	68.9%	0.0%
Income	< \$15K	22.5%	0.0%	77.5%	0.0%
	\$15-25K	25.8%	0.0%	74.2%	0.0%
	\$25-50K	16.6%	0.0%	83.4%	0.0%
	\$50K +	20.9%	0.0%	79.1%	0.0%
Education	Less than High School	23.8%	0.0%	76.2%	0.0%
	High School Diploma or GED	23.4%	0.0%	76.6%	0.0%
	Some College/Technical	20.1%	0.0%	79.9%	0.0%
	College Degree or Higher	17.9%	0.0%	82.1%	0.0%

## Interview Year 2001

Have you ever been told that you have high blood pressure?

		Yes	Yes, female told during pregnancy	No	Told borderline high or pre-hypertensive
<b>Total</b>		<b>25.0%</b>	<b>0.0%</b>	<b>75.0%</b>	<b>0.0%</b>
Gender	Male	23.6%	0.0%	76.4%	0.0%
	Female	26.3%	0.0%	73.7%	0.0%
Age	18 - 24	10.5%	0.0%	89.5%	0.0%
	25 - 34	10.5%	0.0%	89.5%	0.0%
	35 - 44	17.2%	0.0%	82.8%	0.0%
	45 - 54	33.3%	0.0%	66.7%	0.0%
	55 - 64	49.0%	0.0%	51.0%	0.0%
Employed	Yes	20.5%	0.0%	79.5%	0.0%
	No	37.7%	0.0%	62.3%	0.0%
Income	< \$15K	31.3%	0.0%	68.8%	0.0%
	\$15-25K	25.0%	0.0%	75.0%	0.0%
	\$25-50K	26.4%	0.0%	73.6%	0.0%
	\$50K +	17.2%	0.0%	82.8%	0.0%
Education	Less than High School	36.0%	0.0%	64.0%	0.0%
	High School Diploma or GED	30.4%	0.0%	69.6%	0.0%
	Some College/Technical	22.2%	0.0%	77.8%	0.0%
	College Degree or Higher	15.6%	0.0%	84.4%	0.0%

## Interview Year 2003

Have you ever been told that you have high blood pressure?

		Yes	Yes, female told during pregnancy	No	Told borderline high or pre-hypertensive
<b>Total</b>		<b>21.7%</b>	<b>1.2%</b>	<b>77.1%</b>	<b>0.0%</b>
Gender	Male	21.1%	1.5%	77.4%	0.0%
	Female	22.5%	0.8%	76.7%	0.0%
Age	18 - 24	7.2%	1.4%	91.3%	0.0%
	25 - 34	6.3%	1.8%	92.0%	0.0%
	35 - 44	13.8%	2.3%	83.8%	0.0%
	45 - 54	33.6%	0.0%	66.4%	0.0%
	55 - 64	50.6%	0.0%	49.4%	0.0%
Employed	Yes	17.1%	1.6%	81.3%	0.0%
	No	35.5%	0.0%	64.5%	0.0%
Income	< \$15K	26.2%	1.5%	72.3%	0.0%
	\$15-25K	21.4%	1.4%	77.1%	0.0%
	\$25-50K	24.7%	0.6%	74.7%	0.0%
	\$50K +	15.8%	0.7%	83.6%	0.0%
Education	Less than High School	27.5%	2.5%	70.0%	0.0%
	High School Diploma or GED	21.6%	0.5%	77.9%	0.0%
	Some College/Technical	26.0%	1.4%	72.6%	0.0%
	College Degree or Higher	14.9%	1.7%	83.5%	0.0%

Interview Year 2005

		Have you ever been told that you have high blood pressure?			
		Yes	Yes, female told during pregnancy	No	Told borderline high or pre-hypertensive
<b>Total</b>		<b>24.4%</b>	<b>1.2%</b>	<b>73.3%</b>	<b>1.0%</b>
Gender	Male	30.5%	0.0%	68.0%	1.5%
	Female	20.2%	2.1%	77.0%	0.7%
Age	18 - 24	5.0%	0.0%	95.0%	0.0%
	25 - 34	15.1%	1.1%	83.9%	0.0%
	35 - 44	13.7%	3.8%	81.7%	0.8%
	45 - 54	31.7%	0.0%	66.7%	1.7%
	55 - 64	46.0%	0.0%	52.0%	2.0%
Employed	Yes	20.7%	1.7%	76.5%	1.1%
	No	34.6%	0.0%	64.6%	0.8%
Income	< \$15K	33.3%	0.0%	64.4%	2.2%
	\$15-25K	23.2%	0.0%	75.4%	1.4%
	\$25-50K	22.9%	0.0%	75.6%	1.5%
	\$50K +	21.6%	2.9%	74.9%	0.6%
Education	Less than High School	33.3%	0.0%	66.7%	0.0%
	High School Diploma or GED	29.2%	0.0%	69.0%	1.8%
	Some College/Technical	24.3%	0.0%	75.0%	0.7%
	College Degree or Higher	17.5%	3.9%	77.9%	0.6%

Interview Year 2007

		Have you ever been told that you have high blood pressure?			
		Yes	Yes, female told during pregnancy	No	Told borderline high or pre-hypertensive
<b>Total</b>		<b>25.2%</b>	<b>3.3%</b>	<b>71.5%</b>	<b>0.0%</b>
Gender	Male	27.8%	0.7%	71.5%	0.0%
	Female	22.4%	6.1%	71.5%	0.0%
Age	18 - 24	5.7%	5.7%	88.6%	0.0%
	25 - 34	9.4%	6.8%	83.8%	0.0%
	35 - 44	24.0%	2.3%	73.6%	0.0%
	45 - 54	27.6%	3.4%	69.0%	0.0%
	55 - 64	41.5%	0.7%	57.7%	0.0%
Employed	Yes	19.6%	3.1%	77.3%	0.0%
	No	48.1%	4.6%	47.2%	0.0%
Income	< \$15K	30.4%	0.0%	69.6%	0.0%
	\$15-25K	26.5%	2.0%	71.4%	0.0%
	\$25-50K	19.6%	3.7%	76.7%	0.0%
	\$50K +	27.0%	4.2%	68.8%	0.0%
Education	Less than High School	47.1%	2.9%	50.0%	0.0%
	High School Diploma or GED	22.9%	2.0%	75.1%	0.0%
	Some College/Technical	24.3%	4.8%	70.9%	0.0%
	College Degree or Higher	23.2%	3.6%	73.2%	0.0%

		Have you ever been told that you have high blood pressure?			
		Yes	Yes, female told during pregnancy	No	Told borderline high or pre-hypertensive
<b>Total</b>		<b>17.4%</b>	<b>3.3%</b>	<b>77.9%</b>	<b>1.4%</b>
Gender	Male	21.1%	0.8%	77.1%	1.1%
	Female	13.6%	6.0%	78.8%	1.6%
Age	18 - 24	0.0%	1.2%	98.8%	0.0%
	25 - 34	6.4%	8.2%	84.5%	0.9%
	35 - 44	12.7%	2.7%	83.6%	0.9%
	45 - 54	27.5%	3.7%	67.0%	1.8%
	55 - 64	38.2%	0.0%	58.8%	2.9%
Employed	Yes	14.0%	2.5%	82.1%	1.4%
	No	25.2%	5.0%	68.6%	1.3%
Income	< \$15K	25.6%	0.0%	69.8%	4.7%
	\$15-25K	9.1%	6.8%	81.8%	2.3%
	\$25-50K	18.7%	7.5%	72.4%	1.5%
	\$50K +	30.1%	0.0%	67.1%	2.7%
Education	Less than High School	26.3%	10.5%	57.9%	5.3%
	High School Diploma or GED	15.7%	2.1%	80.9%	1.3%
	Some College/Technical	16.4%	3.5%	79.5%	0.6%
	College Degree or Higher	22.2%	4.4%	71.1%	2.2%