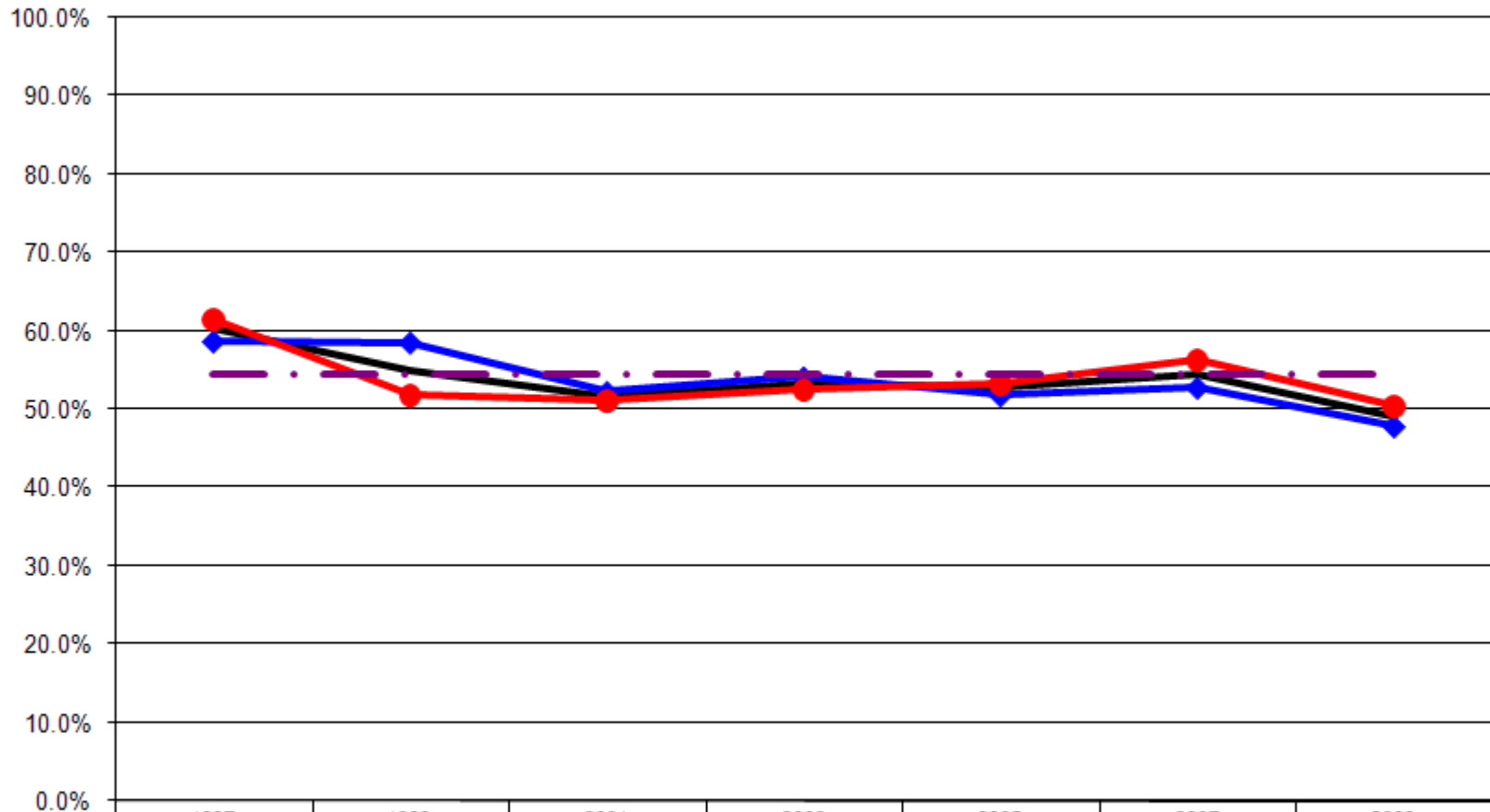


## Ages: 18-64 Survey Population Health Status

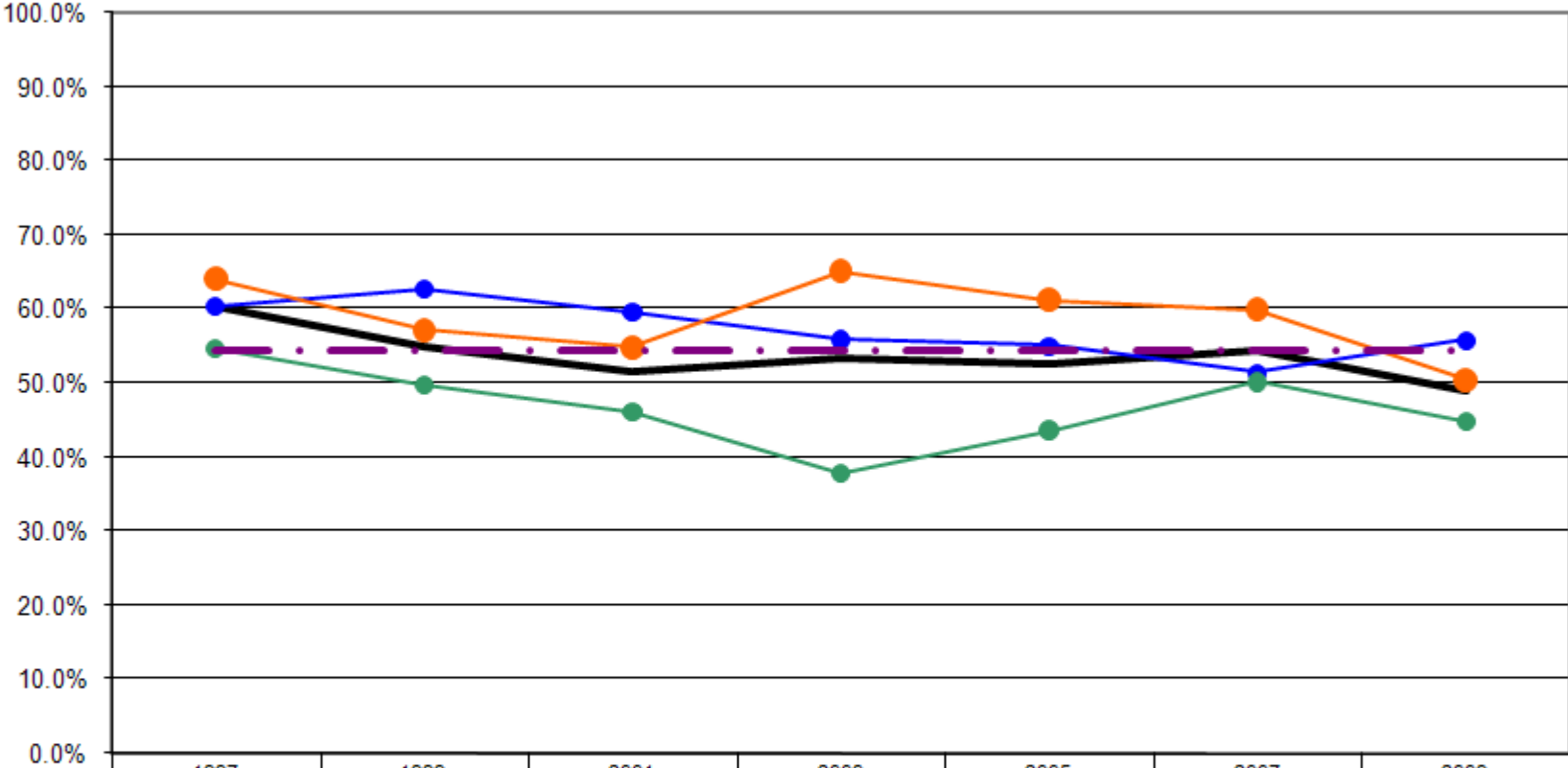
### General Health: Excellent & Very Good % By Gender (Ages: 18-64)



	1997	1999	2001	2003	2005	2007	2009
— Total	60.3%	55.0%	51.6%	53.4%	52.7%	54.5%	49.0%
—◆— Male	58.7%	58.5%	52.2%	54.1%	51.8%	52.8%	47.8%
—●— Female	61.5%	51.8%	51.0%	52.6%	53.3%	56.3%	50.4%
- - - US Total Rate*							54.5%

\*Source: 2008 CDC BRFSS

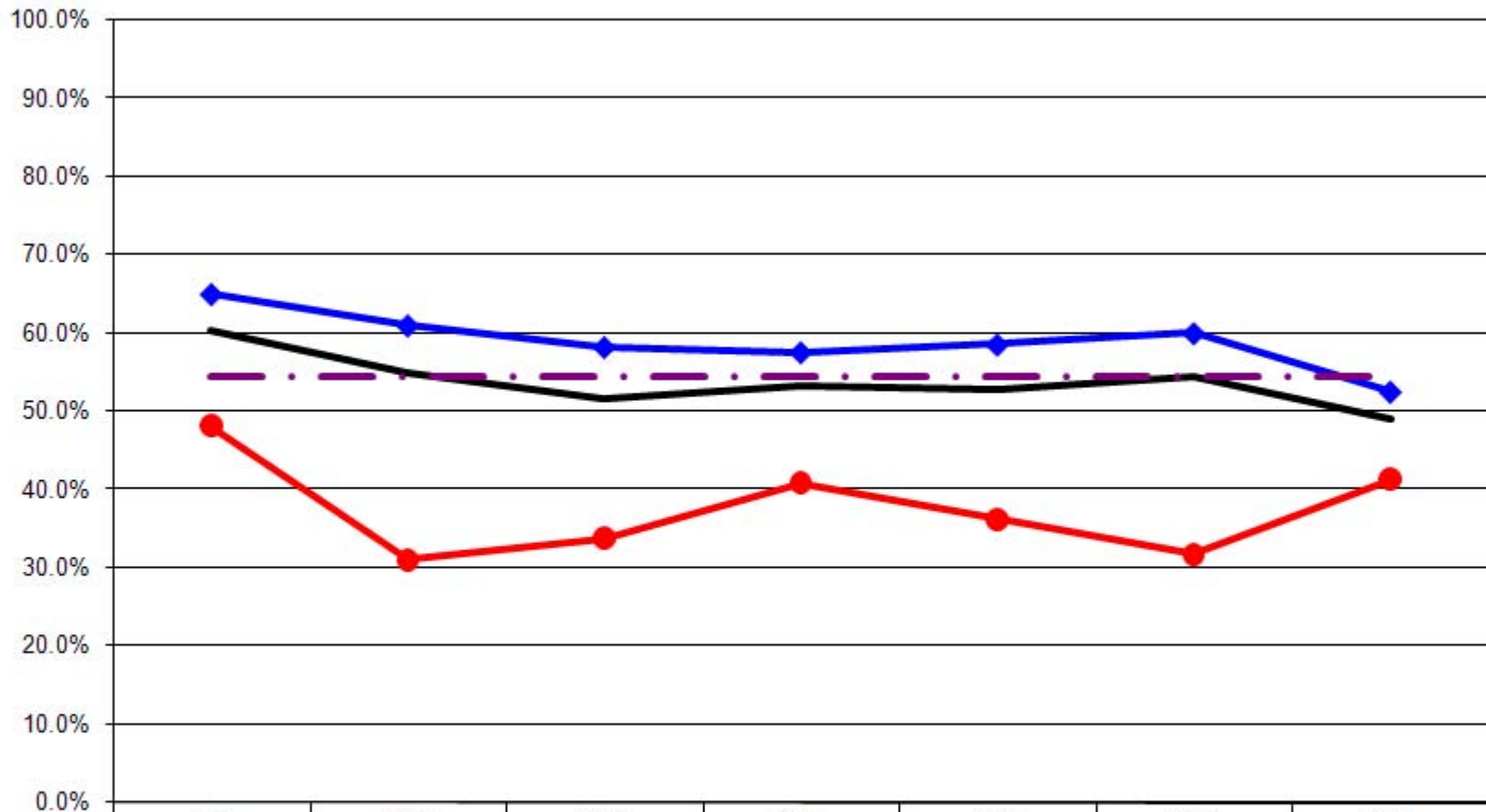
**General Health: Excellent & Very Good % By Age**  
(Ages: 18-64)



	1997	1999	2001	2003	2005	2007	2009
— Total	60.3%	55.0%	51.6%	53.4%	52.7%	54.5%	49.0%
● 18-24	60.4%	62.7%	59.6%	55.9%	55.0%	51.4%	55.8%
● 25-44	64.2%	57.2%	54.8%	65.1%	61.2%	60.0%	50.5%
● 45-64	54.7%	49.8%	46.2%	37.8%	43.6%	50.2%	44.8%
- - - US Total Rate*							54.5%

\*Source: 2008 CDC BRFSS

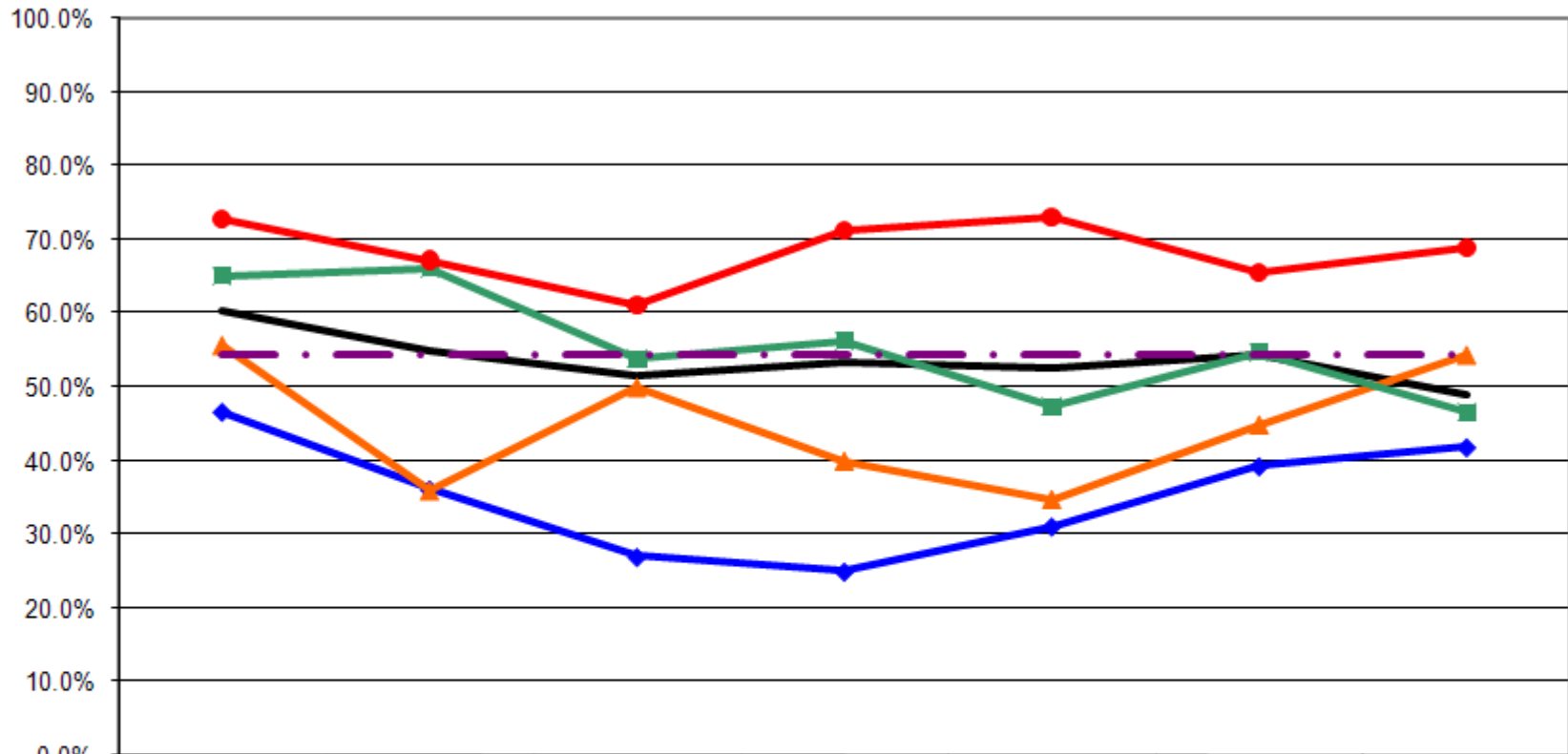
**General Health: Excellent & Very Good % By Employment Status**  
(Ages: 18-64)



	1997	1999	2001	2003	2005	2007	2009
— Total	60.3%	55.0%	51.6%	53.4%	52.7%	54.5%	49.0%
—◆— Employed	65.0%	61.0%	58.2%	57.6%	58.5%	60.0%	52.5%
—●— Not Employed	48.2%	31.1%	33.8%	40.8%	36.2%	31.8%	41.4%
-.-.- US Total Rate*							54.5%

\*Source: 2008 CDC BRFSS

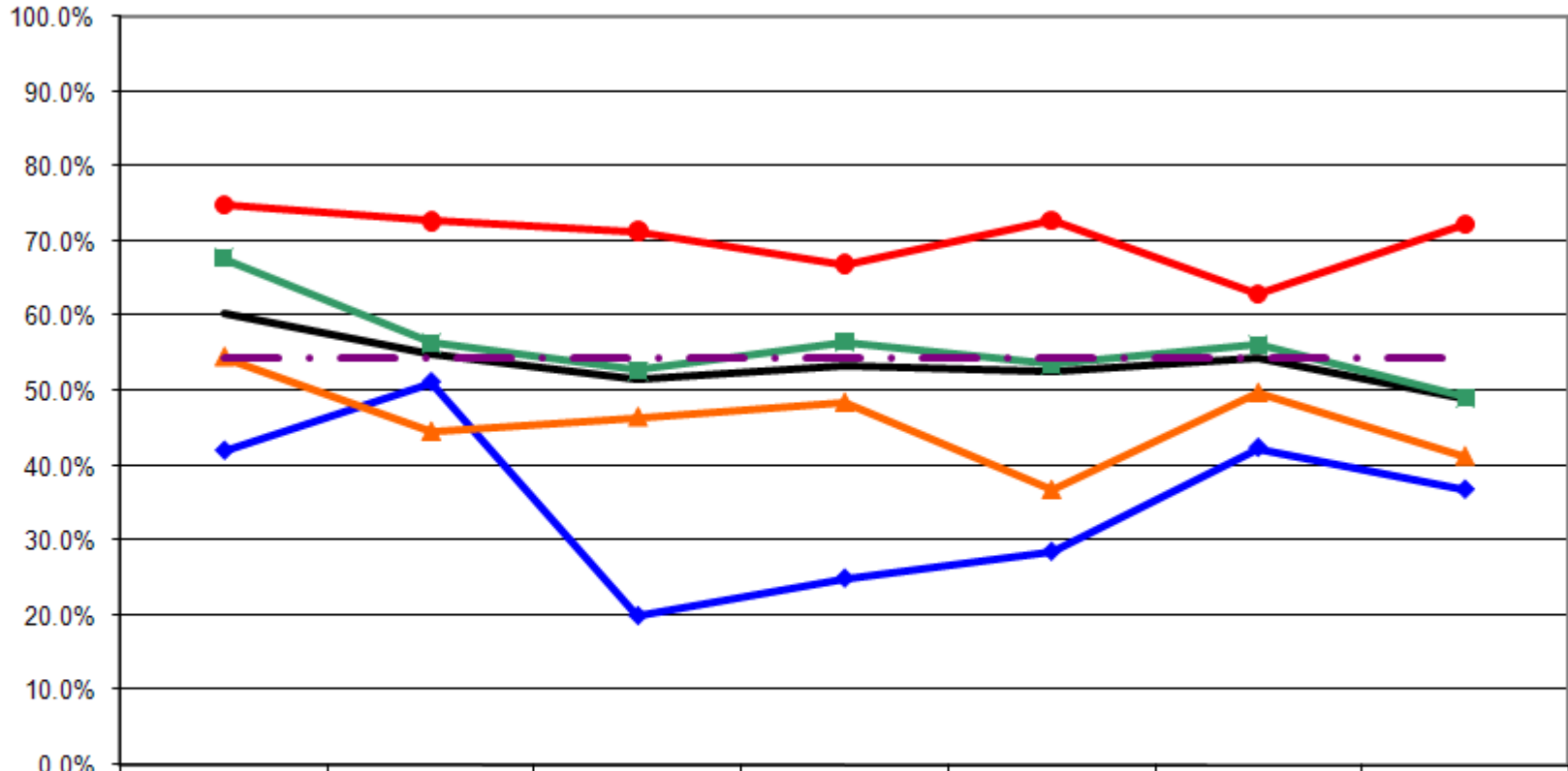
**General Health: Excellent & Very Good % By Income**  
(Ages: 18-64)



	1997	1999	2001	2003	2005	2007	2009
— Total	60.3%	55.0%	51.6%	53.4%	52.7%	54.5%	49.0%
—◆— < \$15K	46.7%	36.1%	27.0%	25.0%	31.1%	39.3%	41.9%
—▲— \$15-25K	55.7%	36.0%	50.0%	40.0%	34.8%	44.9%	54.3%
—■— \$25-50K	65.2%	66.1%	53.8%	56.4%	47.3%	54.8%	46.7%
—●— \$50K+	72.9%	67.3%	61.2%	71.2%	73.1%	65.6%	68.9%
-.-.- US Total Rate*							54.5%

\*2008 CDC BRFSS

**General Health: Excellent & Very Good % By Education**  
(Ages: 18-64)



	1997	1999	2001	2003	2005	2007	2009
— Total	60.3%	55.0%	51.6%	53.4%	52.7%	54.5%	49.0%
—◆— <HS	42.0%	51.2%	20.0%	25.0%	28.6%	42.4%	36.8%
—▲— HS or GED	54.5%	44.6%	46.5%	48.5%	36.9%	49.8%	41.4%
—■— Some College	67.7%	56.4%	52.7%	56.6%	53.6%	56.1%	49.1%
—●— College Degree +	74.8%	72.6%	71.3%	66.9%	72.7%	63.0%	72.2%
- - - US Total Rate*							54.5%

\*Source: 2008 CDC BRFSS

## Interview Year 1997

		Would you say that in general your health is:				
		Excellent	Very Good	Good	Fair	Poor
<b>Total</b>		<b>21.8%</b>	<b>38.5%</b>	<b>28.5%</b>	<b>7.6%</b>	<b>3.6%</b>
Gender	Male	23.9%	34.7%	31.5%	5.6%	4.2%
	Female	20.3%	41.3%	26.2%	9.1%	3.1%
Age	18 - 24	17.0%	43.4%	32.1%	7.5%	0.0%
	25 - 34	20.2%	46.5%	24.8%	8.5%	0.0%
	35 - 44	23.5%	38.2%	31.6%	5.1%	1.5%
	45 - 54	27.3%	29.3%	32.3%	5.1%	6.1%
	55 - 64	18.3%	34.1%	22.0%	13.4%	12.2%
Employed	Yes	23.3%	41.7%	28.6%	5.8%	0.6%
	No	18.0%	30.2%	28.1%	12.2%	11.5%
Income	< \$15K	8.6%	38.1%	30.5%	11.4%	11.4%
	\$15-25K	15.9%	39.8%	27.3%	13.6%	3.4%
	\$25-50K	24.9%	40.3%	29.8%	3.9%	1.1%
	\$50K +	31.3%	41.7%	22.9%	4.2%	0.0%
Education	Less than High School	14.5%	27.5%	29.0%	18.8%	10.1%
	High School Diploma or GED	17.5%	37.0%	32.0%	9.0%	4.5%
	Some College/Technical	23.6%	44.1%	27.6%	3.1%	1.6%
	College Degree or Higher	33.0%	41.7%	22.3%	2.9%	0.0%

## Interview Year 1999

		Would you say that in general your health is:				
		Excellent	Very Good	Good	Fair	Poor
<b>Total</b>		21.3%	33.7%	32.1%	9.6%	3.3%
Gender	Male	24.8%	33.7%	27.6%	11.0%	2.8%
	Female	18.2%	33.6%	36.1%	8.4%	3.6%
Age	18 - 24	20.9%	41.8%	29.9%	7.5%	0.0%
	25 - 34	22.9%	41.3%	31.2%	2.8%	1.8%
	35 - 44	22.0%	29.8%	33.3%	12.8%	2.1%
	45 - 54	17.5%	30.8%	32.5%	13.3%	5.8%
	55 - 64	24.1%	27.7%	32.5%	9.6%	6.0%
Employed	Yes	24.3%	36.8%	30.3%	7.8%	1.0%
	No	10.7%	20.4%	42.7%	14.6%	11.7%
Income	< \$15K	9.6%	26.5%	43.4%	15.7%	4.8%
	\$15-25K	12.4%	23.6%	38.2%	18.0%	7.9%
	\$25-50K	27.6%	38.5%	26.0%	6.3%	1.6%
	\$50K +	26.4%	40.9%	27.3%	2.7%	2.7%
Education	Less than High School	23.3%	27.9%	25.6%	16.3%	7.0%
	High School Diploma or GED	15.7%	28.9%	37.7%	14.2%	3.4%
	Some College/Technical	19.2%	37.2%	35.3%	5.1%	3.2%
	College Degree or Higher	33.3%	39.3%	20.5%	5.1%	1.7%

## Interview Year 2001

		Would you say that in general your health is:				
		Excellent	Very Good	Good	Fair	Poor
<b>Total</b>		<b>17.4%</b>	<b>34.2%</b>	<b>34.2%</b>	<b>10.4%</b>	<b>3.9%</b>
Gender	Male	20.1%	32.1%	33.7%	8.8%	5.2%
	Female	15.1%	36.0%	34.6%	11.6%	2.7%
Age	18 - 24	26.3%	33.3%	36.8%	3.5%	0.0%
	25 - 34	18.1%	40.0%	32.4%	8.6%	1.0%
	35 - 44	18.6%	33.8%	35.9%	9.7%	2.1%
	45 - 54	15.3%	37.2%	28.5%	13.1%	5.8%
	55 - 64	12.4%	24.7%	40.2%	13.4%	9.3%
Employed	Yes	20.0%	38.2%	34.7%	6.6%	0.5%
	No	10.3%	23.4%	33.1%	20.7%	12.4%
Income	< \$15K	12.7%	14.3%	38.1%	23.8%	11.1%
	\$15-25K	21.4%	28.6%	33.3%	9.5%	7.1%
	\$25-50K	14.9%	38.9%	33.7%	10.1%	2.4%
	\$50K +	23.1%	38.1%	32.1%	5.2%	1.5%
Education	Less than High School	10.0%	10.0%	32.0%	30.0%	18.0%
	High School Diploma or GED	10.9%	35.6%	39.6%	10.4%	3.5%
	Some College/Technical	19.8%	32.9%	34.7%	9.6%	3.0%
	College Degree or Higher	27.9%	43.4%	25.4%	3.3%	0.0%

## Interview Year 2003

		Would you say that in general your health is:				
		Excellent	Very Good	Good	Fair	Poor
<b>Total</b>		<b>22.7%</b>	<b>30.7%</b>	<b>31.7%</b>	<b>10.4%</b>	<b>4.6%</b>
Gender	Male	23.3%	30.7%	33.0%	8.1%	4.8%
	Female	22.0%	30.6%	30.2%	12.9%	4.3%
Age	18 - 24	25.0%	30.9%	38.2%	2.9%	2.9%
	25 - 34	28.8%	43.2%	22.5%	5.4%	0.0%
	35 - 44	24.6%	34.6%	28.5%	9.2%	3.1%
	45 - 54	20.2%	19.3%	38.5%	16.5%	5.5%
	55 - 64	13.1%	22.6%	34.5%	16.7%	13.1%
Employed	Yes	24.7%	32.9%	32.6%	7.7%	2.1%
	No	15.8%	25.0%	29.2%	18.3%	11.7%
Income	< \$15K	9.4%	15.6%	37.5%	23.4%	14.1%
	\$15-25K	12.9%	27.1%	38.6%	18.6%	2.9%
	\$25-50K	22.4%	33.9%	33.9%	6.1%	3.6%
	\$50K +	34.2%	37.0%	22.6%	4.8%	1.4%
Education	Less than High School	10.0%	15.0%	37.5%	30.0%	7.5%
	High School Diploma or GED	20.9%	27.6%	34.2%	11.7%	5.6%
	Some College/Technical	25.5%	31.0%	30.3%	10.3%	2.8%
	College Degree or Higher	26.4%	40.5%	27.3%	1.7%	4.1%

## Interview Year 2005

		Would you say that in general your health is:				
		Excellent	Very Good	Good	Fair	Poor
<b>Total</b>		<b>17.8%</b>	<b>34.9%</b>	<b>30.8%</b>	<b>12.0%</b>	<b>4.5%</b>
Gender	Male	19.3%	32.5%	34.5%	10.7%	3.0%
	Female	16.7%	36.6%	28.2%	12.9%	5.6%
Age	18 - 24	20.0%	35.0%	35.0%	10.0%	0.0%
	25 - 34	12.9%	50.5%	26.9%	8.6%	1.1%
	35 - 44	23.7%	35.9%	29.0%	9.9%	1.5%
	45 - 54	15.0%	30.0%	35.0%	14.2%	5.8%
	55 - 64	17.0%	25.0%	30.0%	16.0%	12.0%
Employed	Yes	19.9%	38.7%	33.3%	7.8%	0.3%
	No	11.8%	24.4%	23.6%	23.6%	16.5%
Income	< \$15K	11.1%	20.0%	26.7%	20.0%	22.2%
	\$15-25K	8.7%	26.1%	36.2%	21.7%	7.2%
	\$25-50K	16.0%	31.3%	36.6%	15.3%	0.8%
	\$50K +	27.5%	45.6%	22.2%	3.5%	1.2%
Education	Less than High School	4.8%	23.8%	28.6%	33.3%	9.5%
	High School Diploma or GED	10.1%	26.8%	37.5%	16.7%	8.9%
	Some College/Technical	22.9%	30.7%	30.0%	13.6%	2.9%
	College Degree or Higher	23.4%	49.4%	24.0%	2.6%	0.6%

## Interview Year 2007

		Would you say that in general your health is:				
		Excellent	Very Good	Good	Fair	Poor
<b>Total</b>		<b>17.8%</b>	<b>36.7%</b>	<b>31.0%</b>	<b>9.7%</b>	<b>4.8%</b>
Gender	Male	14.5%	38.3%	31.0%	10.0%	6.2%
	Female	21.3%	35.0%	31.0%	9.4%	3.2%
Age	18 - 24	31.4%	20.0%	42.9%	2.9%	2.9%
	25 - 34	18.8%	41.0%	29.9%	9.4%	0.9%
	35 - 44	17.2%	43.0%	27.3%	10.2%	2.3%
	45 - 54	13.8%	42.1%	28.3%	9.7%	6.2%
	55 - 64	18.3%	26.1%	35.2%	11.3%	9.2%
Employed	Yes	18.7%	41.3%	30.9%	7.1%	2.0%
	No	14.0%	17.8%	32.7%	20.6%	15.0%
Income	< \$15K	7.1%	32.1%	26.8%	19.6%	14.3%
	\$15-25K	6.1%	38.8%	36.7%	16.3%	2.0%
	\$25-50K	15.4%	39.4%	33.0%	8.0%	4.3%
	\$50K +	25.4%	40.2%	27.5%	5.3%	1.6%
Education	Less than High School	12.1%	30.3%	15.2%	24.2%	18.2%
	High School Diploma or GED	16.6%	33.2%	35.1%	10.7%	4.4%
	Some College/Technical	17.5%	38.6%	33.9%	7.4%	2.6%
	College Degree or Higher	21.7%	41.3%	25.4%	8.0%	3.6%

		Would you say that in general your health is:				
		Excellent	Very Good	Good	Fair	Poor
<b>Total</b>		<b>10.6%</b>	<b>38.5%</b>	<b>32.3%</b>	<b>15.0%</b>	<b>3.7%</b>
Gender	Male	10.0%	37.8%	33.3%	15.2%	3.7%
	Female	11.2%	39.2%	31.2%	14.8%	3.6%
Age	18 - 24	8.1%	47.7%	41.9%	2.3%	0.0%
	25 - 34	9.9%	43.2%	27.9%	15.3%	3.6%
	35 - 44	9.9%	37.8%	39.6%	9.0%	3.6%
	45 - 54	10.0%	36.4%	30.0%	20.9%	2.7%
	55 - 64	14.7%	28.4%	23.5%	25.5%	7.8%
Employed	Yes	11.5%	41.1%	34.4%	11.7%	1.4%
	No	8.6%	32.7%	27.8%	22.2%	8.6%
Income	< \$15K	16.3%	25.6%	30.2%	14.0%	14.0%
	\$15-25K	8.7%	45.7%	26.1%	13.0%	6.5%
	\$25-50K	8.9%	37.8%	36.3%	15.6%	1.5%
	\$50K +	23.0%	45.9%	18.9%	8.1%	4.1%
Education	Less than High School	15.8%	21.1%	31.6%	15.8%	15.8%
	High School Diploma or GED	7.2%	34.2%	36.7%	19.0%	3.0%
	Some College/Technical	9.8%	39.3%	32.9%	13.3%	4.6%
	College Degree or Higher	20.0%	52.2%	20.0%	6.7%	1.1%