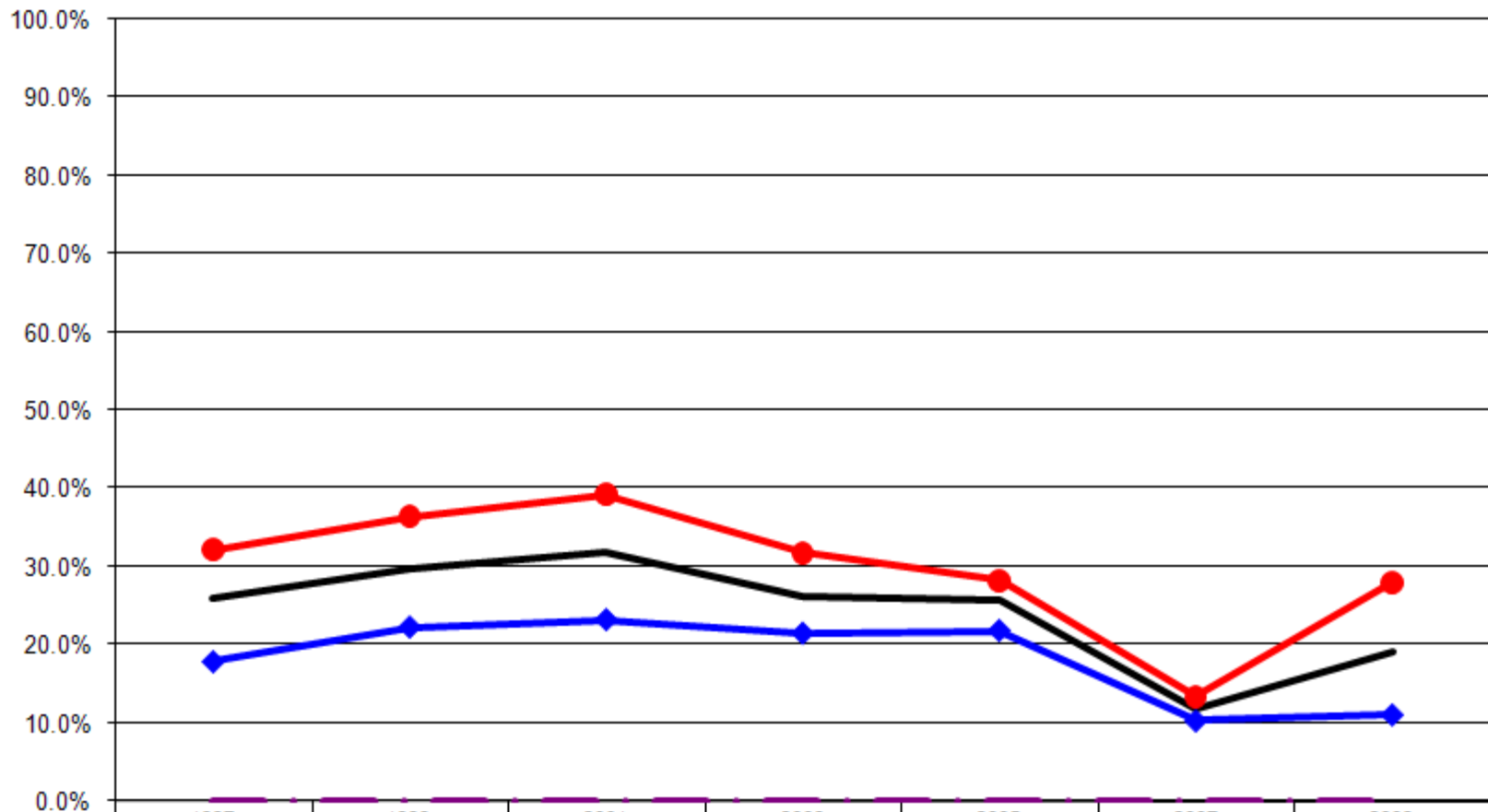


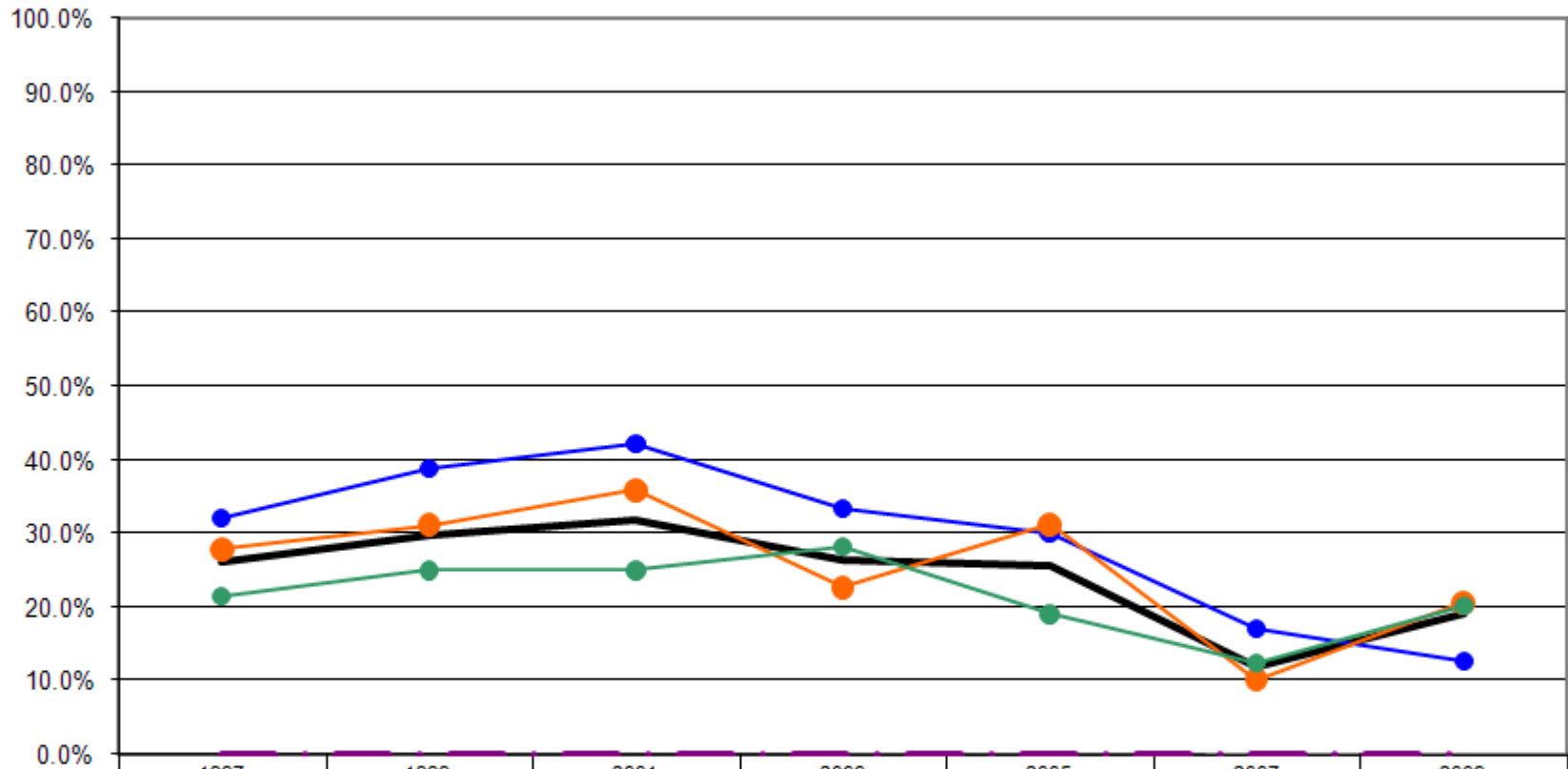
Ages: 18-64 Survey Population Mental Health

Mental Health Not Good Three or More Days By Gender (Ages: 18-64)



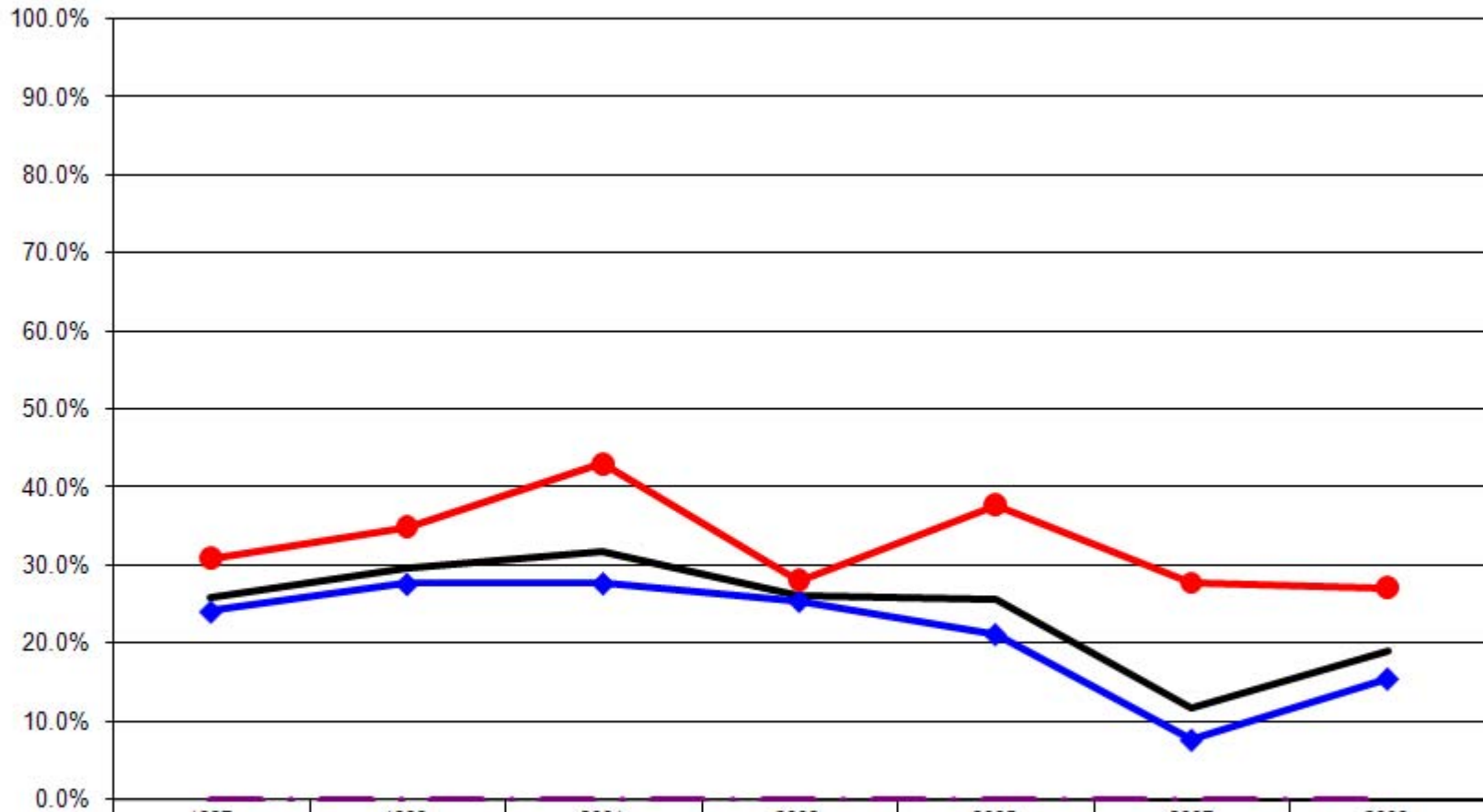
	1997	1999	2001	2003	2005	2007	2009
— Total	26.1%	29.8%	31.9%	26.3%	25.6%	11.8%	19.2%
—◆ Male	17.8%	22.3%	23.2%	21.5%	21.8%	10.3%	11.1%
—● Female	32.2%	36.5%	39.2%	31.8%	28.2%	13.4%	28.0%
- - - US Total Rate*	0.0%	0.0%	0.0%	0.0%	0.0%	0.0%	0.0%

Mental Health Not Good Three or More Days By Age (Ages: 18-64)



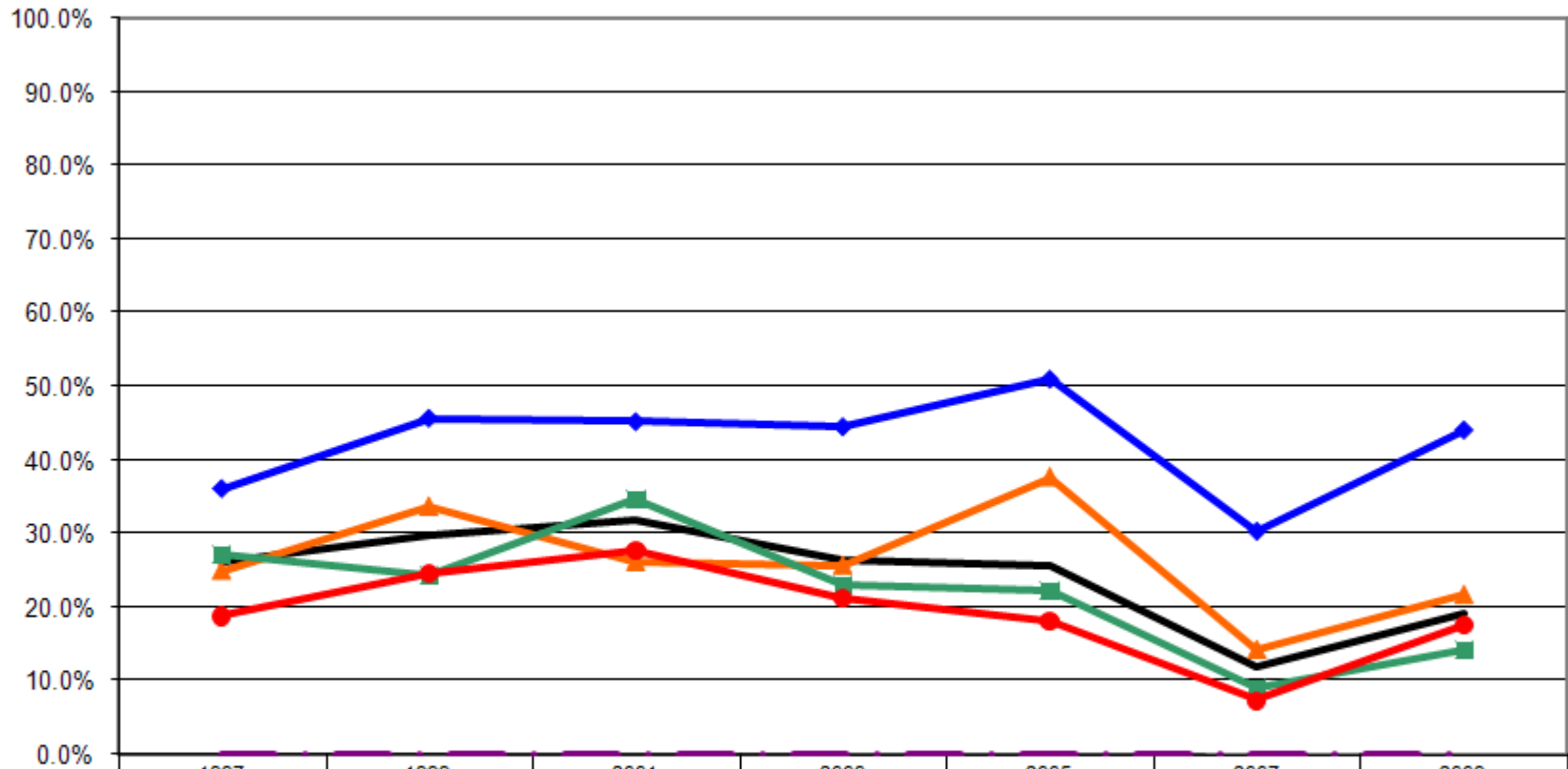
	1997	1999	2001	2003	2005	2007	2009
— Total	26.1%	29.8%	31.9%	26.3%	25.6%	11.8%	19.2%
—● 18-24	32.1%	38.8%	42.1%	33.3%	30.0%	17.1%	12.8%
—● 25-44	27.9%	31.2%	36.0%	22.7%	31.3%	10.2%	20.7%
—● 45-64	21.5%	25.0%	25.0%	28.2%	19.1%	12.5%	20.2%
- - - US Total Rate*							

Mental Health Not Good Three or More Days By Employment Status (Ages: 18-64)



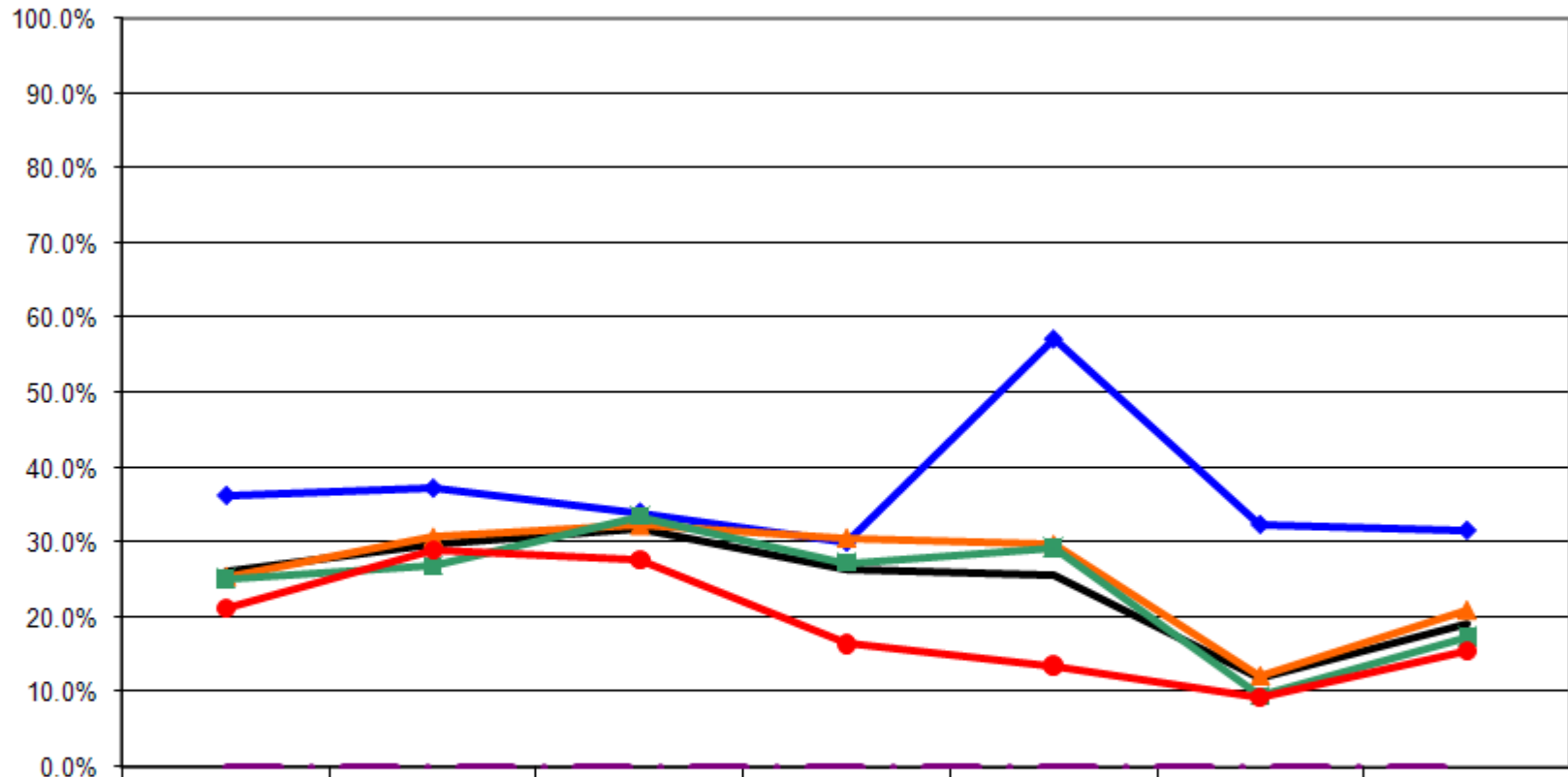
	1997	1999	2001	2003	2005	2007	2009
— Total	26.1%	29.8%	31.9%	26.3%	25.6%	11.8%	19.2%
—◆— Employed	24.2%	27.7%	27.8%	25.5%	21.3%	7.8%	15.6%
—●— Not Employed	30.9%	35.0%	43.2%	28.1%	37.8%	27.8%	27.2%
- - - US Total Rate*							

Mental Health Not Good Three or More Days By Income (Ages: 18-64)



	1997	1999	2001	2003	2005	2007	2009
— Total	26.1%	29.8%	31.9%	26.3%	25.6%	11.8%	19.2%
—◆— <\$15K	36.2%	45.8%	45.3%	44.6%	51.1%	30.4%	44.2%
—▲— \$15-25K	25.0%	33.7%	26.2%	25.7%	37.7%	14.3%	21.7%
—■— \$25-50K	27.1%	24.4%	34.6%	22.9%	22.1%	9.0%	14.1%
—●— \$50K+	18.8%	24.5%	27.6%	21.2%	18.1%	7.4%	17.6%
- - - US Total Rate*	0.0%	0.0%	0.0%	0.0%	0.0%	0.0%	0.0%

Mental Health Not Good Three or More Days By Education (Ages: 18-64)



	1997	1999	2001	2003	2005	2007	2009
— Total	26.1%	29.8%	31.9%	26.3%	25.6%	11.8%	19.2%
—◆— <HS	36.2%	37.2%	34.0%	30.0%	57.1%	32.4%	31.6%
—▲— HS or GED	25.5%	30.7%	32.4%	30.7%	29.8%	12.2%	21.0%
—■— Some College	25.2%	26.9%	33.5%	27.4%	29.3%	9.5%	17.3%
—●— College Degree +	21.4%	29.1%	27.9%	16.5%	13.6%	9.4%	15.6%
- - - US Total Rate*							

Interview Year 1997

For how many days during the past 30 days was your mental health not good?

		None	1-2 Days	3-7 Days	8-29 Days	30 Days
Total		62.7%	11.0%	13.6%	7.1%	5.7%
Gender	Male	73.1%	8.7%	10.6%	4.8%	2.9%
	Female	55.1%	12.6%	15.8%	8.8%	7.7%
Age	18 - 24	47.2%	20.8%	18.9%	7.5%	5.7%
	25 - 34	59.4%	12.5%	14.1%	9.4%	4.7%
	35 - 44	57.8%	14.1%	14.8%	8.1%	5.2%
	45 - 54	70.1%	6.2%	13.4%	5.2%	5.2%
	55 - 64	77.5%	2.5%	7.5%	3.8%	8.8%
Employed	Yes	64.3%	11.2%	14.0%	6.5%	3.9%
	No	58.4%	10.2%	12.4%	8.8%	10.2%
Income	< \$15K	52.9%	10.6%	14.4%	9.6%	12.5%
	\$15-25K	64.4%	10.3%	12.6%	8.0%	4.6%
	\$25-50K	60.6%	12.2%	14.4%	7.8%	5.0%
	\$50K +	73.7%	7.4%	13.7%	4.2%	1.1%
Education	Less than High School	57.4%	5.9%	19.1%	10.3%	7.4%
	High School Diploma or GED	65.2%	9.1%	10.6%	8.6%	6.6%
	Some College/Technical	61.3%	12.9%	12.9%	6.5%	6.5%
	College Degree or Higher	63.1%	15.5%	16.5%	2.9%	1.9%

Interview Year 1999

For how many days during the past 30 days was your mental health not good?

		None	1-2 Days	3-7 Days	8-29 Days	30 Days
Total		57.5%	12.5%	14.3%	9.7%	6.0%
Gender	Male	66.5%	11.0%	9.0%	6.1%	7.3%
	Female	49.5%	13.9%	19.0%	12.8%	4.8%
Age	18 - 24	46.3%	14.9%	25.4%	7.5%	6.0%
	25 - 34	59.6%	9.2%	16.5%	11.0%	3.7%
	35 - 44	52.5%	15.8%	12.9%	11.5%	7.2%
	45 - 54	52.5%	13.3%	15.8%	10.0%	8.3%
	55 - 64	79.5%	8.4%	2.4%	6.0%	3.6%
Employed	Yes	57.9%	14.3%	13.8%	8.3%	5.8%
	No	56.9%	7.8%	15.7%	11.8%	7.8%
Income	< \$15K	45.7%	7.4%	17.3%	22.2%	7.4%
	\$15-25K	48.3%	18.0%	19.1%	7.9%	6.7%
	\$25-50K	59.9%	15.6%	14.1%	6.3%	4.2%
	\$50K +	64.5%	10.9%	10.9%	6.4%	7.3%
Education	Less than High School	53.5%	9.3%	14.0%	16.3%	7.0%
	High School Diploma or GED	57.6%	11.3%	14.3%	8.9%	7.9%
	Some College/Technical	56.1%	16.8%	13.5%	9.7%	3.9%
	College Degree or Higher	60.7%	10.3%	15.4%	8.5%	5.1%

Interview Year 2001

		For how many days during the past 30 days was your mental health not good?				
		None	1-2 Days	3-7 Days	8-29 Days	30 Days
Total		56.3%	11.4%	14.0%	12.3%	6.0%
Gender	Male	67.5%	8.9%	9.8%	9.3%	4.5%
	Female	46.7%	13.5%	17.6%	14.9%	7.3%
Age	18 - 24	37.5%	19.6%	17.9%	17.9%	7.1%
	25 - 34	56.3%	9.7%	16.5%	15.5%	1.9%
	35 - 44	49.7%	11.9%	16.8%	15.4%	6.3%
	45 - 54	58.4%	10.9%	13.1%	8.8%	8.8%
	55 - 64	74.0%	8.3%	6.3%	6.3%	5.2%
Employed	Yes	58.9%	13.0%	14.3%	10.5%	3.3%
	No	48.6%	7.0%	13.4%	17.6%	13.4%
Income	< \$15K	41.0%	11.5%	18.0%	19.7%	9.8%
	\$15-25K	58.5%	14.6%	4.9%	12.2%	9.8%
	\$25-50K	54.6%	10.6%	16.9%	13.0%	4.8%
	\$50K +	60.9%	11.3%	13.5%	9.0%	5.3%
Education	Less than High School	56.5%	6.5%	10.9%	13.0%	13.0%
	High School Diploma or GED	56.2%	11.3%	13.3%	12.3%	6.9%
	Some College/Technical	56.1%	9.8%	16.5%	13.4%	4.3%
	College Degree or Higher	56.6%	15.6%	13.1%	10.7%	4.1%

Interview Year 2003

		For how many days during the past 30 days was your mental health not good?				
		None	1-2 Days	3-7 Days	8-29 Days	30 Days
Total		65.5%	7.8%	10.8%	9.2%	6.6%
Gender	Male	72.9%	5.3%	7.1%	9.0%	5.6%
	Female	57.1%	10.7%	15.0%	9.4%	7.7%
Age	18 - 24	55.9%	10.3%	10.3%	14.7%	8.8%
	25 - 34	66.7%	9.0%	12.6%	5.4%	6.3%
	35 - 44	70.5%	7.8%	10.1%	6.2%	5.4%
	45 - 54	60.2%	8.3%	9.3%	13.0%	9.3%
	55 - 64	71.1%	3.6%	12.0%	9.6%	3.6%
Employed	Yes	66.5%	7.7%	12.0%	8.5%	5.3%
	No	63.6%	7.6%	6.8%	11.0%	11.0%
Income	< \$15K	47.7%	7.7%	13.8%	16.9%	13.8%
	\$15-25K	67.6%	5.9%	4.4%	10.3%	11.8%
	\$25-50K	67.7%	9.1%	11.6%	7.3%	4.3%
	\$50K +	71.7%	6.9%	11.0%	7.6%	2.8%
Education	Less than High School	60.5%	7.9%	7.9%	13.2%	10.5%
	High School Diploma or GED	63.1%	6.1%	14.1%	10.1%	6.6%
	Some College/Technical	66.0%	6.3%	9.0%	9.7%	9.0%
	College Degree or Higher	70.6%	12.6%	8.4%	5.9%	2.5%

Interview Year 2005

For how many days during the past 30 days was your mental health not good?

		None	1-2 Days	3-7 Days	8-29 Days	30 Days
Total		65.8%	7.9%	10.4%	9.1%	6.8%
Gender	Male	70.7%	6.8%	8.4%	7.3%	6.8%
	Female	62.5%	8.6%	11.8%	10.4%	6.8%
Age	18 - 24	66.7%	2.6%	7.7%	15.4%	7.7%
	25 - 34	56.0%	12.1%	15.4%	9.9%	6.6%
	35 - 44	62.0%	6.2%	13.2%	10.9%	7.8%
	45 - 54	66.1%	10.2%	7.6%	8.5%	7.6%
	55 - 64	79.8%	5.3%	6.4%	4.3%	4.3%
Employed	Yes	70.0%	8.5%	9.6%	7.4%	4.5%
	No	53.4%	5.9%	12.7%	14.4%	13.6%
Income	< \$15K	39.5%	7.0%	11.6%	20.9%	20.9%
	\$15-25K	52.2%	9.0%	11.9%	14.9%	11.9%
	\$25-50K	66.7%	10.3%	7.1%	8.7%	7.1%
	\$50K +	73.4%	8.3%	11.2%	5.9%	1.2%
Education	Less than High School	33.3%	9.5%	4.8%	38.1%	14.3%
	High School Diploma or GED	62.2%	7.3%	12.8%	7.9%	9.8%
	Some College/Technical	57.9%	11.3%	11.3%	11.3%	8.3%
	College Degree or Higher	81.0%	5.2%	7.8%	4.6%	1.3%

Interview Year 2007

For how many days during the past 30 days was your mental health not good?

		None	1-2 Days	3-7 Days	8-29 Days	30 Days
Total		80.6%	7.6%	3.7%	5.7%	2.5%
Gender	Male	83.4%	6.2%	3.5%	4.8%	2.1%
	Female	77.6%	9.0%	4.0%	6.5%	2.9%
Age	18 - 24	74.3%	8.6%	0.0%	14.3%	2.9%
	25 - 34	80.2%	10.3%	1.7%	4.3%	3.4%
	35 - 44	80.6%	8.5%	3.1%	7.0%	0.8%
	45 - 54	78.6%	6.9%	5.5%	6.2%	2.8%
	55 - 64	84.4%	5.0%	5.0%	2.8%	2.8%
Employed	Yes	83.9%	8.3%	3.3%	3.3%	1.1%
	No	67.6%	4.6%	5.6%	13.9%	8.3%
Income	< \$15K	60.7%	8.9%	5.4%	14.3%	10.7%
	\$15-25K	79.6%	6.1%	0.0%	12.2%	2.0%
	\$25-50K	84.0%	6.9%	4.8%	3.2%	1.1%
	\$50K +	85.1%	7.4%	3.2%	3.2%	1.1%
Education	Less than High School	61.8%	5.9%	8.8%	14.7%	8.8%
	High School Diploma or GED	80.9%	6.9%	3.4%	6.4%	2.5%
	Some College/Technical	83.1%	7.4%	2.6%	4.2%	2.6%
	College Degree or Higher	81.0%	9.5%	4.4%	4.4%	0.7%

		For how many days during the past 30 days was your mental health not good?				
		None	1-2 Days	3-7 Days	8-29 Days	30 Days
Total		70.1%	10.0%	11.0%	5.4%	3.6%
Gender	Male	78.7%	9.7%	7.0%	2.3%	2.3%
	Female	60.9%	10.3%	15.2%	8.6%	4.9%
Age	18 - 24	75.0%	11.3%	6.3%	6.3%	1.3%
	25 - 34	69.8%	5.7%	14.2%	9.4%	0.9%
	35 - 44	70.5%	10.5%	10.5%	2.9%	5.7%
	45 - 54	64.8%	14.8%	13.0%	3.7%	3.7%
	55 - 64	71.6%	7.8%	9.8%	4.9%	5.9%
Employed	Yes	72.5%	11.3%	11.0%	3.2%	2.0%
	No	64.5%	7.1%	11.0%	10.3%	7.1%
Income	< \$15K	48.8%	4.9%	14.6%	19.5%	12.2%
	\$15-25K	65.9%	9.8%	9.8%	9.8%	4.9%
	\$25-50K	73.5%	12.1%	8.3%	3.8%	2.3%
	\$50K +	74.3%	7.1%	11.4%	1.4%	5.7%
Education	Less than High School	64.7%	0.0%	5.9%	17.6%	11.8%
	High School Diploma or GED	67.8%	10.1%	12.3%	6.6%	3.1%
	Some College/Technical	69.6%	12.5%	10.1%	4.8%	3.0%
	College Degree or Higher	77.3%	6.8%	10.2%	1.1%	4.5%