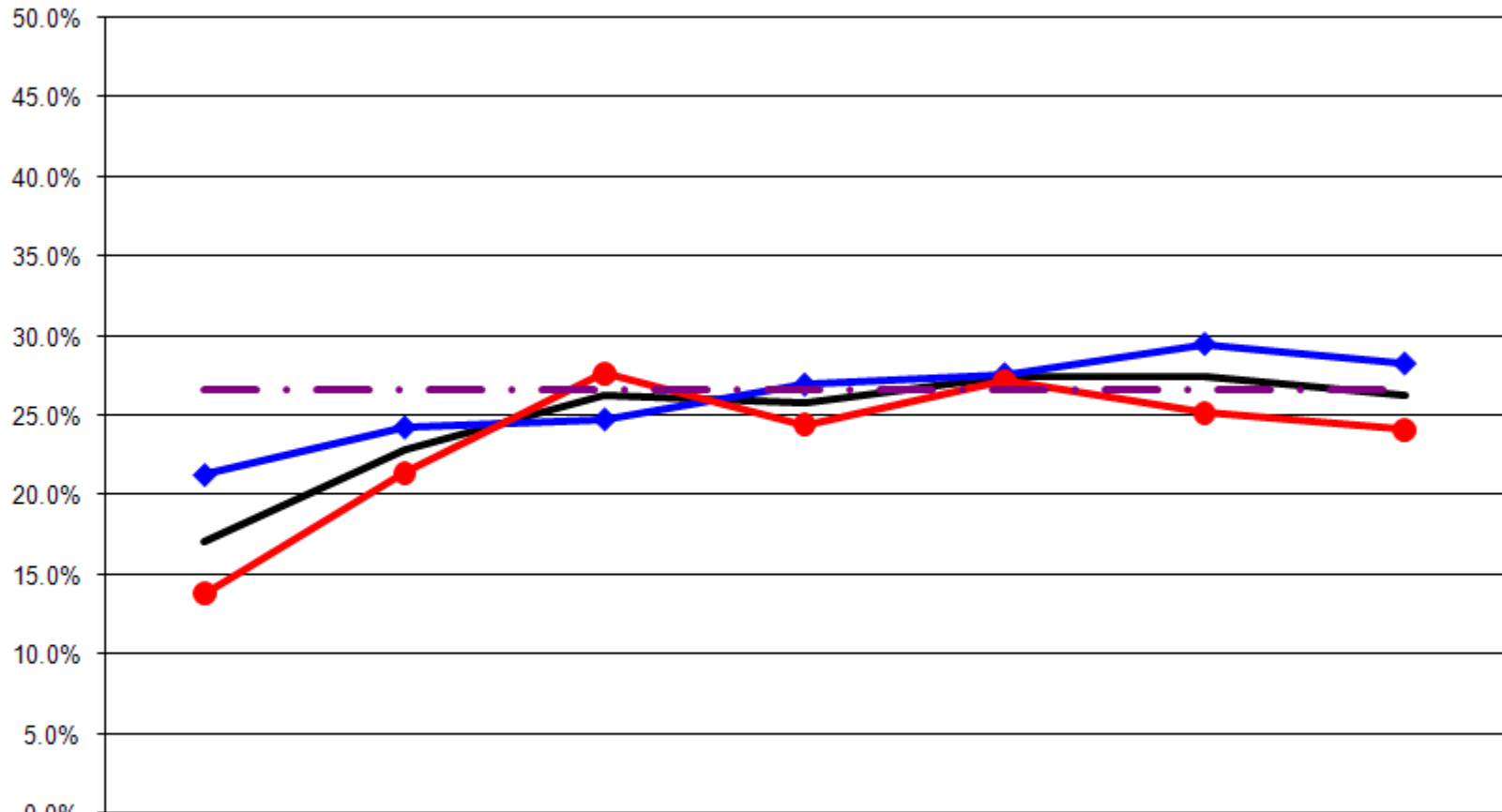


Ages: 18-64 Survey Population Obesity BMI (Body Mass Index)

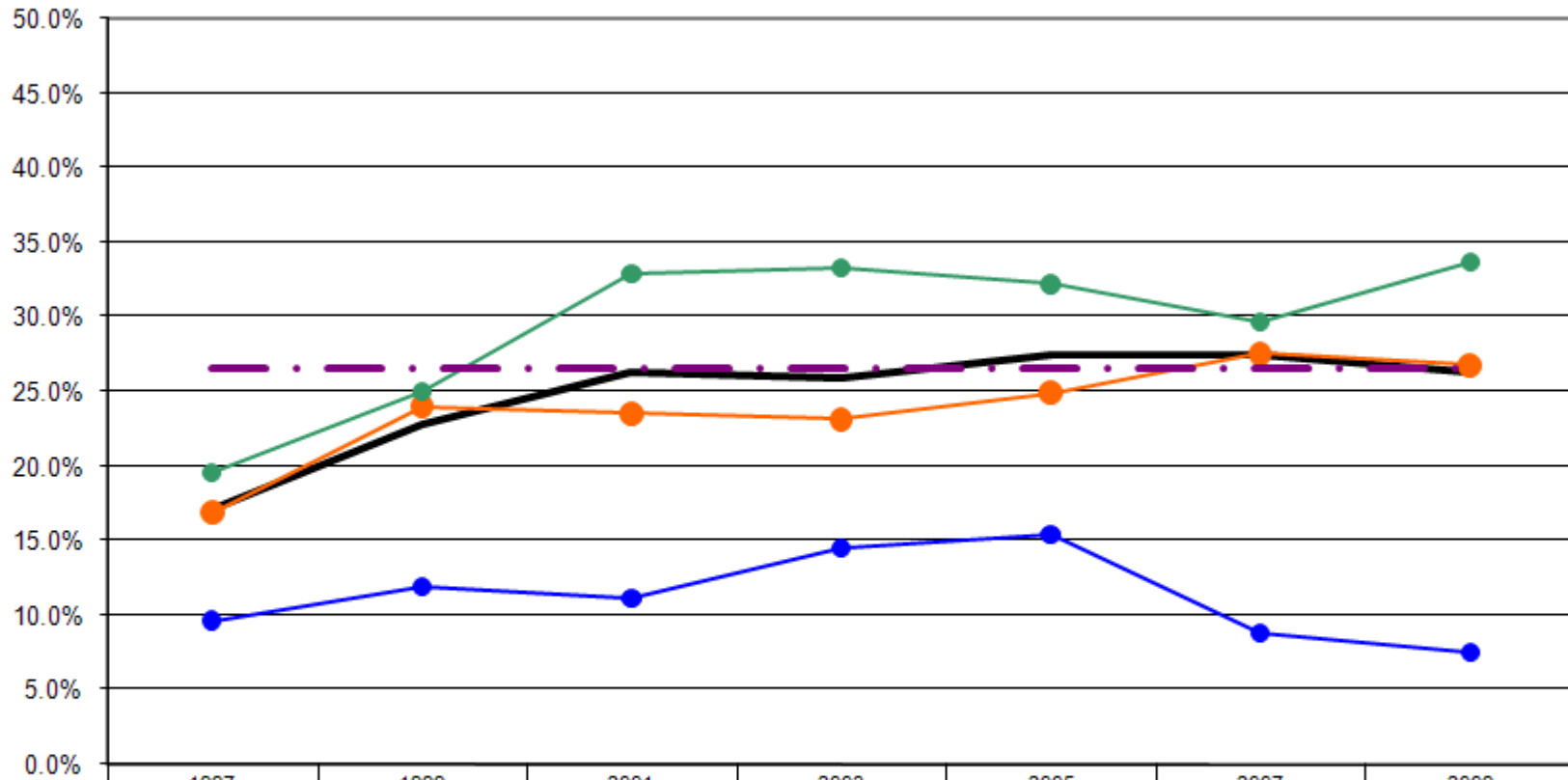
Obesity: Body Mass Index 30.0 or Greater By Gender
(Ages: 18-64)



— Total	1997	1999	2001	2003	2005	2007	2009
—◆— Male	21.3%	24.3%	24.8%	27.0%	27.6%	29.5%	28.3%
—●— Female	13.8%	21.4%	27.7%	24.4%	27.2%	25.2%	24.1%
-.-.- US Total Rate*							26.6%

*Source: 2008 CDC BRFSS

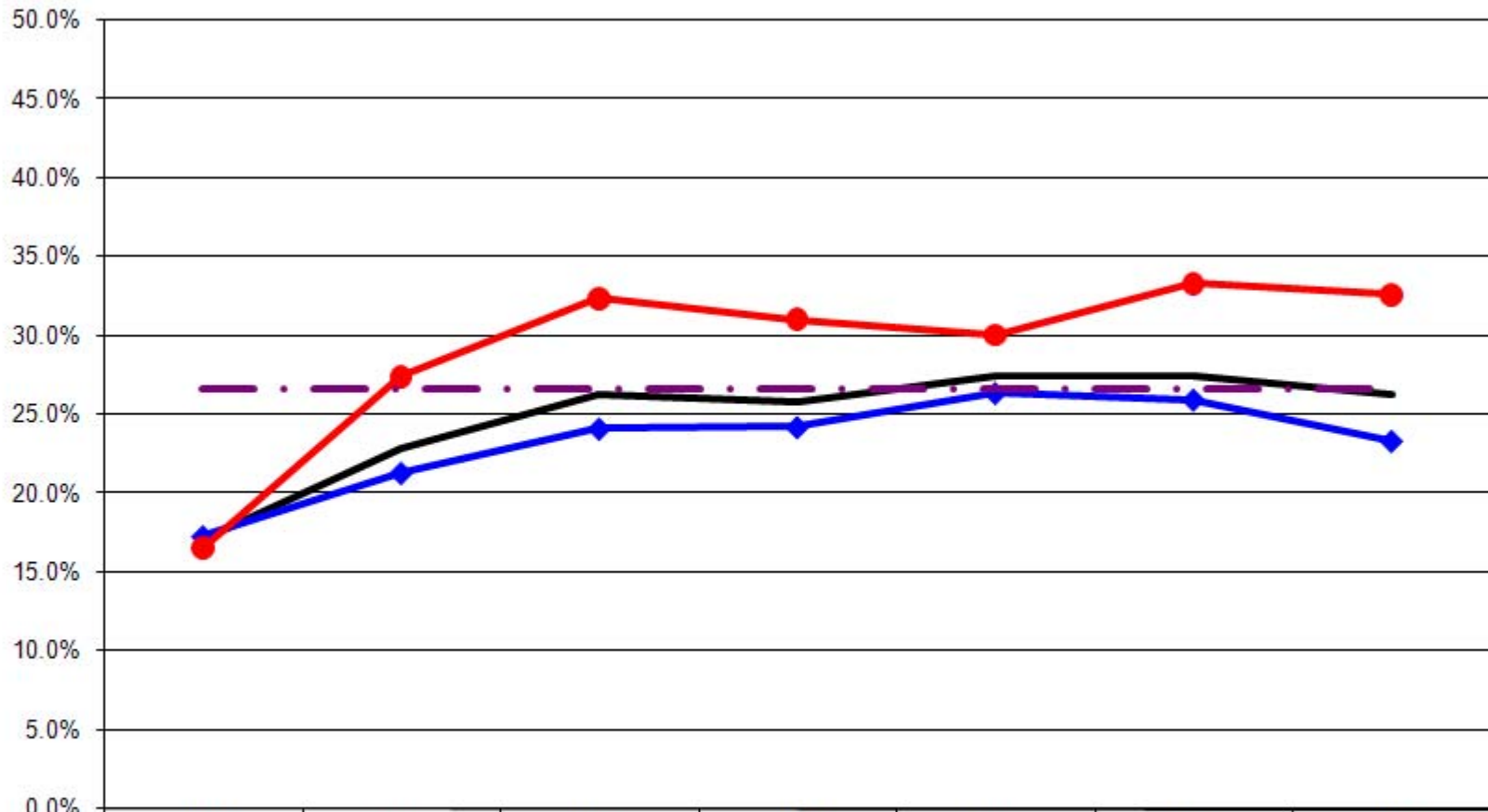
**Obesity: Body Mass Index 30.0 or Greater By Age
(Ages: 18-64)**



	1997	1999	2001	2003	2005	2007	2009
— Total	17.1%	22.8%	26.3%	25.8%	27.4%	27.4%	26.3%
● 18-24	9.6%	11.9%	11.1%	14.5%	15.4%	8.8%	7.5%
● 25-44	16.9%	24.0%	23.5%	23.1%	24.9%	27.5%	26.8%
● 45-64	19.6%	25.0%	32.9%	33.3%	32.2%	29.7%	33.7%
- - - - US Total Rate*							26.6%

*Source: 2008 CDC BRFSS

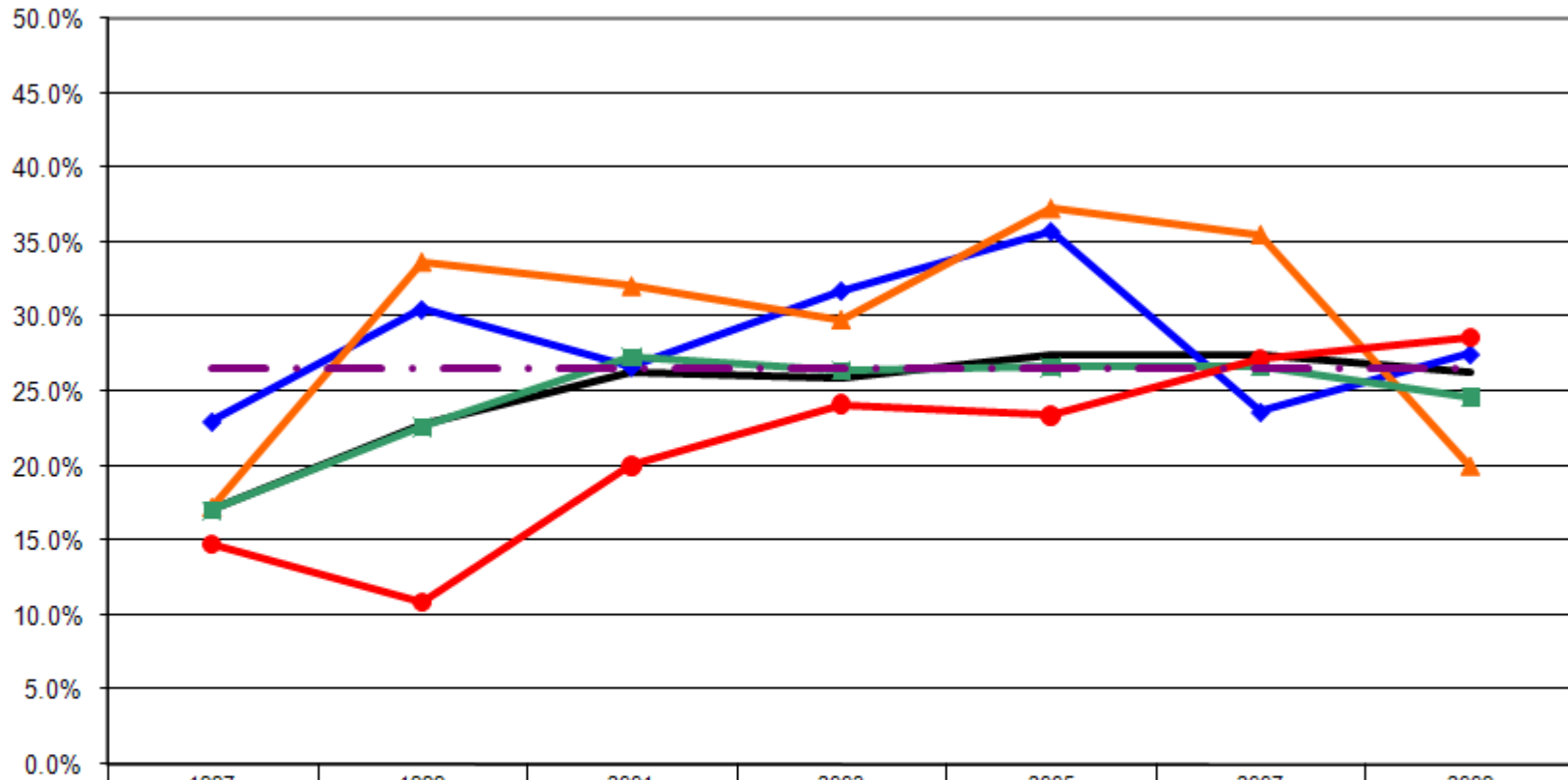
Obesity: Body Mass Index 30.0 or Greater By Employment Status
(Ages: 18-64)



	1997	1999	2001	2003	2005	2007	2009
— Total	17.1%	22.8%	26.3%	25.8%	27.4%	27.4%	26.3%
—◆— Employed	17.3%	21.3%	24.1%	24.2%	26.4%	26.0%	23.4%
—●— Not Employed	16.5%	27.5%	32.4%	31.0%	30.1%	33.3%	32.7%
- - - - US Total Rate*							26.6%

*Source: 2008 CDC BRFSS

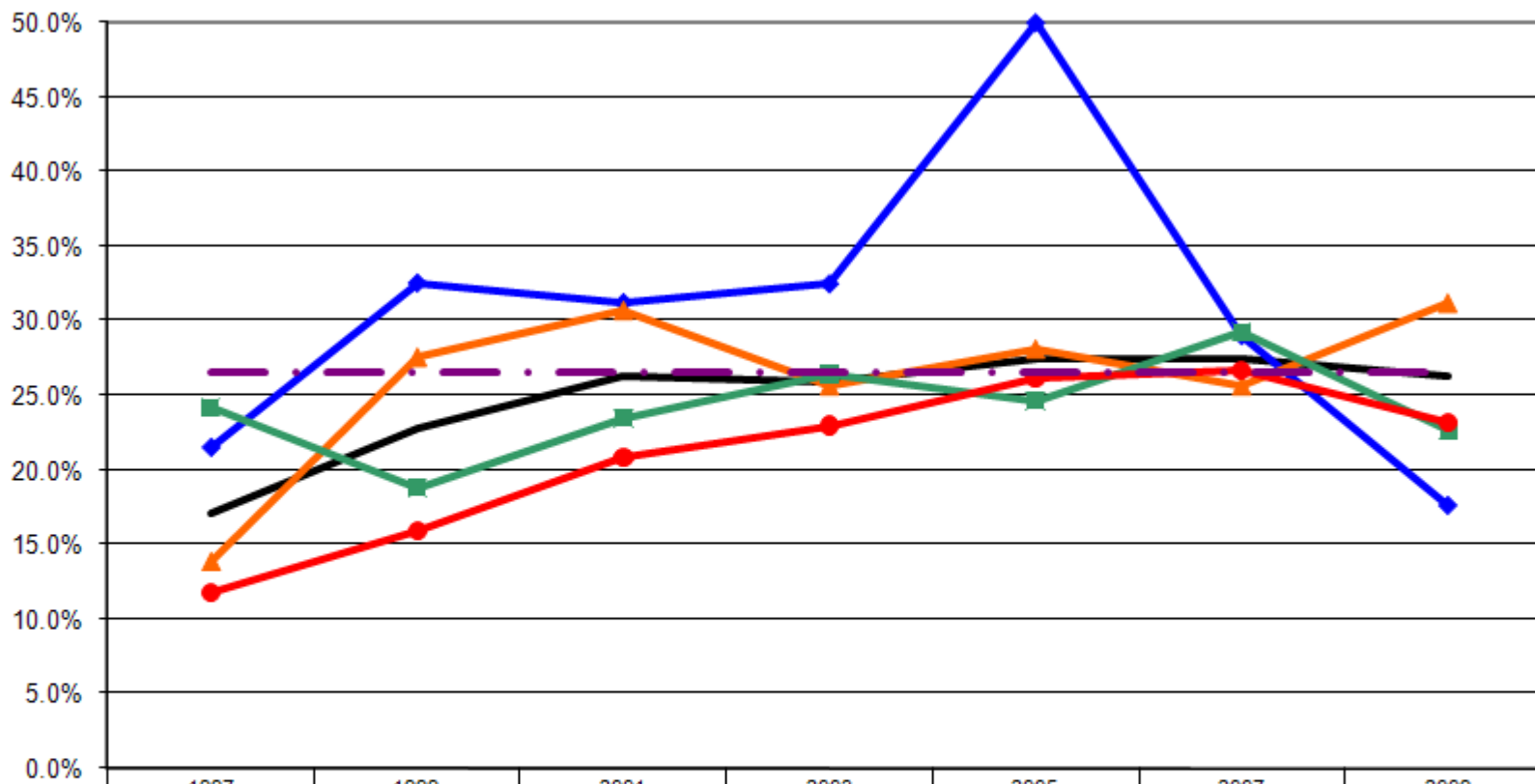
Obesity: Body Mass Index 30.0 or Greater By Income
(Ages: 18-64)



	1997	1999	2001	2003	2005	2007	2009
— Total	17.1%	22.8%	26.3%	25.8%	27.4%	27.4%	26.3%
—◆— <\$15K	23.0%	30.5%	26.7%	31.7%	35.7%	23.6%	27.5%
—▲— \$15-25K	17.2%	33.7%	32.1%	29.9%	37.3%	35.6%	20.0%
—■— \$25-50K	17.0%	22.6%	27.3%	26.4%	26.6%	26.6%	24.6%
—●— \$50K+	14.7%	10.9%	20.0%	24.1%	23.4%	27.2%	28.6%
-.-.- US Total Rate*							26.6%

*Source: 2008 CDC BRFSS

**Obesity: Body Mass Index 30.0 or Greater By Education
(Ages: 18-64)**



	1997	1999	2001	2003	2005	2007	2009
— Total	17.1%	22.8%	26.3%	25.8%	27.4%	27.4%	26.3%
—◆— <HS	21.5%	32.6%	31.3%	32.5%	50.0%	29.0%	17.6%
—▲— HS or GED	13.8%	27.6%	30.7%	25.7%	28.1%	25.6%	31.2%
—■— Some College	24.2%	18.8%	23.5%	26.4%	24.6%	29.2%	22.6%
—●— College Degree +	11.8%	15.9%	20.9%	23.0%	26.2%	26.7%	23.3%
- - - US Total Rate*							26.6%

*Source: 2008 CDC BRFSS

Interview Year 1997

		BMI (Body Mass Index)		
		Healthy (BMI < 24.9)	Overweight (BMI 25.0 to 29.9)	At Risk (BMI > 30.0)
Total		47.1%	35.8%	17.1%
Gender	Male	37.0%	41.7%	21.3%
	Female	54.9%	31.3%	13.8%
Age	18 - 24	57.7%	32.7%	9.6%
	25 - 34	52.4%	35.5%	12.1%
	35 - 44	41.2%	37.4%	21.4%
	45 - 54	35.7%	41.8%	22.4%
	55 - 64	55.6%	28.4%	16.0%
Employed	Yes	46.5%	36.3%	17.3%
	No	48.9%	34.6%	16.5%
Income	< \$15K	44.0%	33.0%	23.0%
	\$15-25K	44.8%	37.9%	17.2%
	\$25-50K	46.6%	36.4%	17.0%
	\$50K +	50.5%	34.7%	14.7%
Education	Less than High School	40.0%	38.5%	21.5%
	High School Diploma or GED	49.2%	36.9%	13.8%
	Some College/Technical	38.7%	37.1%	24.2%
	College Degree or Higher	57.8%	30.4%	11.8%

Interview Year 1999

		BMI (Body Mass Index)		
		Healthy (BMI < 24.9)	Overweight (BMI 25.0 to 29.9)	At Risk (BMI > 30.0)
Total		37.2%	38.5%	24.3%
Gender	Male	50.4%	28.2%	21.4%
	Female	71.6%	16.4%	11.9%
Age	18 - 24	48.6%	31.2%	20.2%
	25 - 34	37.2%	35.8%	27.0%
	35 - 44	35.9%	37.6%	26.5%
	45 - 54	38.6%	38.6%	22.9%
	55 - 64	0.0%	0.0%	0.0%
Employed	Yes	42.2%	30.4%	27.5%
	No	45.1%	24.4%	30.5%
Income	< \$15K	46.1%	20.2%	33.7%
	\$15-25K	43.7%	33.7%	22.6%
	\$25-50K	44.5%	44.5%	10.9%
	\$50K +	51.2%	16.3%	32.6%
Education	Less than High School	35.5%	36.9%	27.6%
	High School Diploma or GED	48.1%	33.1%	18.8%
	Some College/Technical	51.3%	32.7%	15.9%
	College Degree or Higher	37.2%	38.5%	24.3%

Interview Year 2001

		BMI (Body Mass Index)		
		Healthy (BMI < 24.9)	Overweight (BMI 25.0 to 29.9)	At Risk (BMI > 30.0)
Total		36.4%	37.3%	26.3%
Gender	Male	27.6%	47.6%	24.8%
	Female	44.3%	28.0%	27.7%
Age	18 - 24	55.6%	33.3%	11.1%
	25 - 34	42.0%	40.0%	18.0%
	35 - 44	41.3%	31.2%	27.5%
	45 - 54	22.2%	43.7%	34.1%
	55 - 64	32.2%	36.7%	31.1%
Employed	Yes	36.3%	39.5%	24.1%
	No	36.0%	31.7%	32.4%
Income	< \$15K	33.3%	40.0%	26.7%
	\$15-25K	38.3%	29.6%	32.1%
	\$25-50K	36.4%	36.4%	27.3%
	\$50K +	38.5%	41.5%	20.0%
Education	Less than High School	41.7%	27.1%	31.3%
	High School Diploma or GED	33.9%	35.4%	30.7%
	Some College/Technical	38.9%	37.7%	23.5%
	College Degree or Higher	34.8%	44.3%	20.9%

Interview Year 2003

		BMI (Body Mass Index)		
		Healthy (BMI < 24.9)	Overweight (BMI 25.0 to 29.9)	At Risk (BMI > 30.0)
Total		40.3%	33.9%	25.8%
Gender	Male	33.0%	40.1%	27.0%
	Female	49.3%	26.3%	24.4%
Age	18 - 24	65.2%	20.3%	14.5%
	25 - 34	42.7%	33.0%	24.3%
	35 - 44	37.3%	40.5%	22.2%
	45 - 54	29.2%	36.8%	34.0%
	55 - 64	35.0%	32.5%	32.5%
Employed	Yes	38.6%	37.2%	24.2%
	No	45.7%	23.3%	31.0%
Income	< \$15K	46.0%	22.2%	31.7%
	\$15-25K	52.2%	17.9%	29.9%
	\$25-50K	34.0%	39.6%	26.4%
	\$50K +	36.2%	39.7%	24.1%
Education	Less than High School	35.0%	32.5%	32.5%
	High School Diploma or GED	41.9%	32.5%	25.7%
	Some College/Technical	36.4%	37.1%	26.4%
	College Degree or Higher	44.2%	32.7%	23.0%

Interview Year 2005

		BMI (Body Mass Index)		
		Healthy (BMI < 24.9)	Overweight (BMI 25.0 to 29.9)	At Risk (BMI > 30.0)
Total		37.6%	35.0%	27.4%
Gender	Male	28.1%	44.3%	27.6%
	Female	44.4%	28.4%	27.2%
Age	18 - 24	61.5%	23.1%	15.4%
	25 - 34	37.5%	37.5%	25.0%
	35 - 44	44.8%	30.4%	24.8%
	45 - 54	27.2%	39.5%	33.3%
	55 - 64	30.9%	38.3%	30.9%
Employed	Yes	35.6%	38.0%	26.4%
	No	43.1%	26.8%	30.1%
Income	< \$15K	28.6%	35.7%	35.7%
	\$15-25K	35.8%	26.9%	37.3%
	\$25-50K	38.7%	34.7%	26.6%
	\$50K +	37.7%	38.9%	23.4%
Education	Less than High School	10.0%	40.0%	50.0%
	High School Diploma or GED	30.6%	41.3%	28.1%
	Some College/Technical	41.8%	33.6%	24.6%
	College Degree or Higher	44.8%	29.0%	26.2%

Interview Year 2007

		BMI (Body Mass Index)		
		Healthy (BMI < 24.9)	Overweight (BMI 25.0 to 29.9)	At Risk (BMI > 30.0)
Total		30.4%	42.2%	27.4%
Gender	Male	23.0%	47.5%	29.5%
	Female	38.4%	36.4%	25.2%
Age	18 - 24	64.7%	26.5%	8.8%
	25 - 34	41.6%	37.2%	21.2%
	35 - 44	28.5%	38.2%	33.3%
	45 - 54	27.4%	47.4%	25.2%
	55 - 64	16.8%	48.9%	34.4%
Employed	Yes	30.2%	43.9%	26.0%
	No	28.1%	38.5%	33.3%
Income	< \$15K	36.4%	40.0%	23.6%
	\$15-25K	35.6%	28.9%	35.6%
	\$25-50K	25.5%	47.8%	26.6%
	\$50K +	29.3%	43.5%	27.2%
Education	Less than High School	29.0%	41.9%	29.0%
	High School Diploma or GED	31.8%	42.6%	25.6%
	Some College/Technical	32.0%	38.8%	29.2%
	College Degree or Higher	26.7%	46.6%	26.7%

Interview Year 2009

		BMI (Body Mass Index)		
		Healthy (BMI < 24.9)	Overweight (BMI 25.0 to 29.9)	At Risk (BMI > 30.0)
Total		21.7%	50.0%	28.3%
Gender	Male	43.3%	32.6%	24.1%
	Female	45.0%	47.5%	7.5%
Age	18 - 24	41.0%	36.0%	23.0%
	25 - 34	27.6%	41.8%	30.6%
	35 - 44	22.9%	45.8%	31.3%
	45 - 54	25.5%	38.3%	36.2%
	55 - 64	0.0%	0.0%	0.0%
Employed	Yes	31.3%	36.1%	32.7%
	No	37.5%	35.0%	27.5%
Income	< \$15K	35.0%	45.0%	20.0%
	\$15-25K	28.5%	46.9%	24.6%
	\$25-50K	34.3%	37.1%	28.6%
	\$50K +	47.1%	35.3%	17.6%
Education	Less than High School	24.4%	44.4%	31.2%
	High School Diploma or GED	37.1%	40.3%	22.6%
	Some College/Technical	37.2%	39.5%	23.3%
	College Degree or Higher	21.7%	50.0%	28.3%