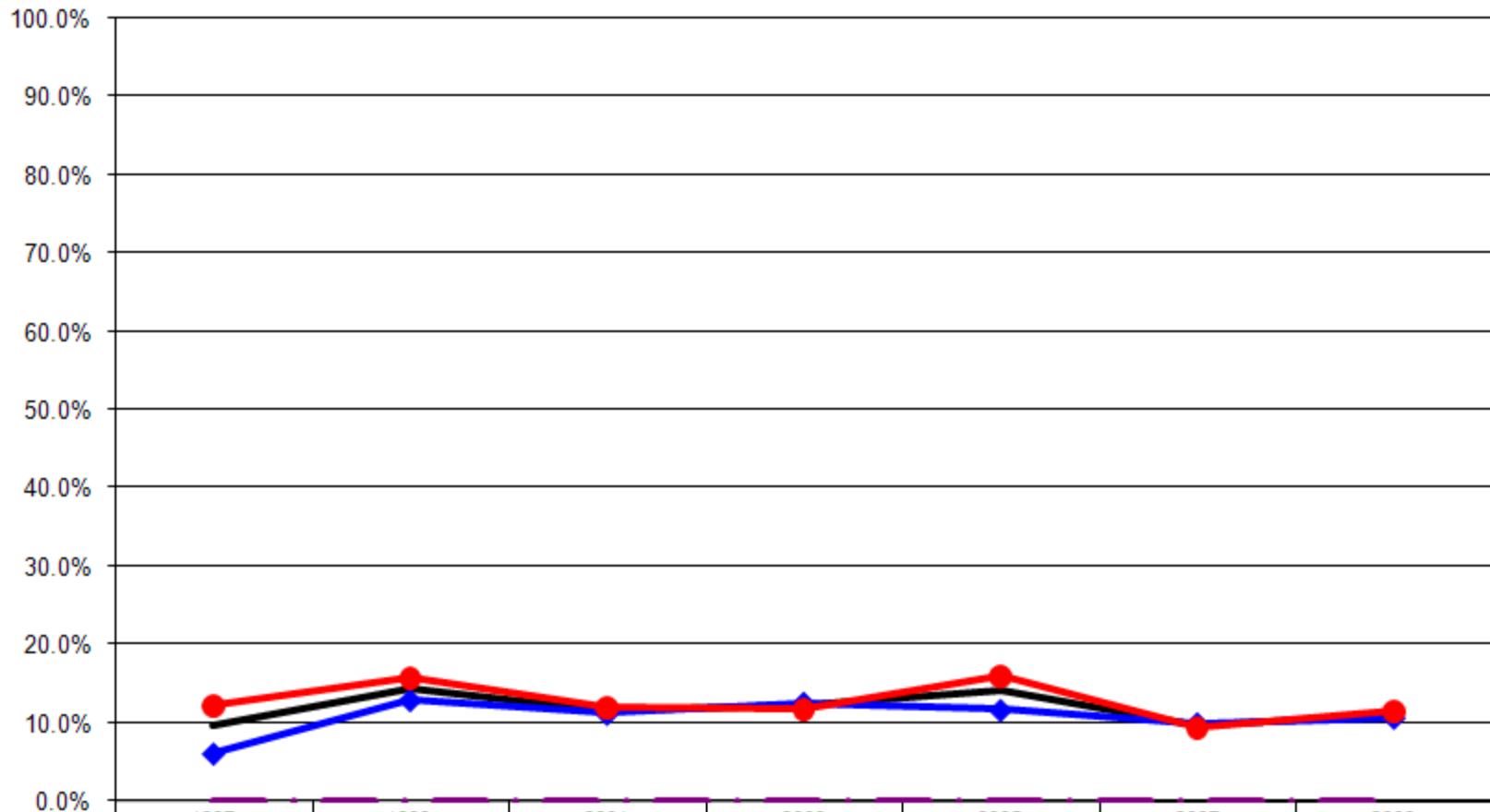


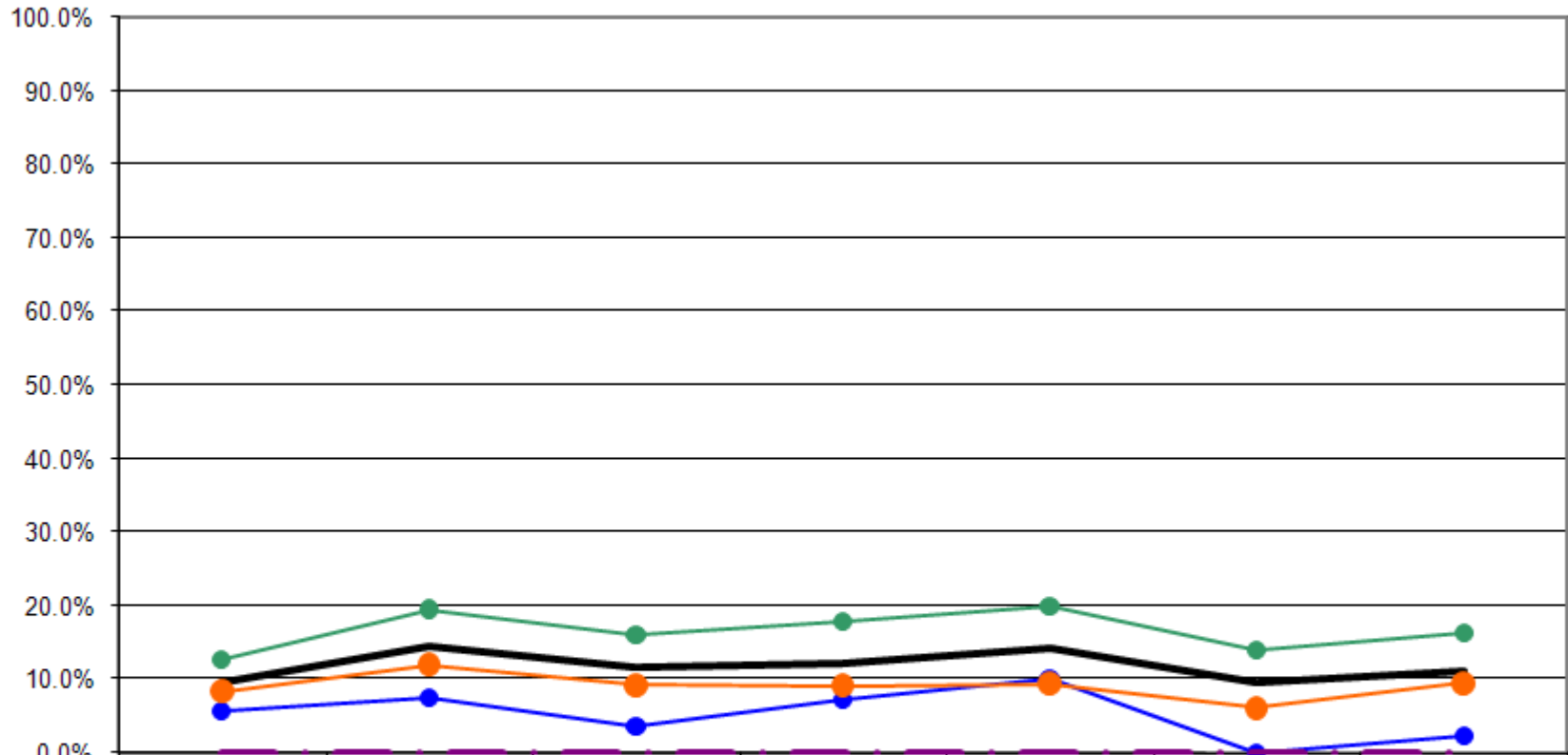
Ages: 18-64 Survey Population Physical Health

Physical Health Not Good Eight or More Days By Gender (Ages: 18-64)



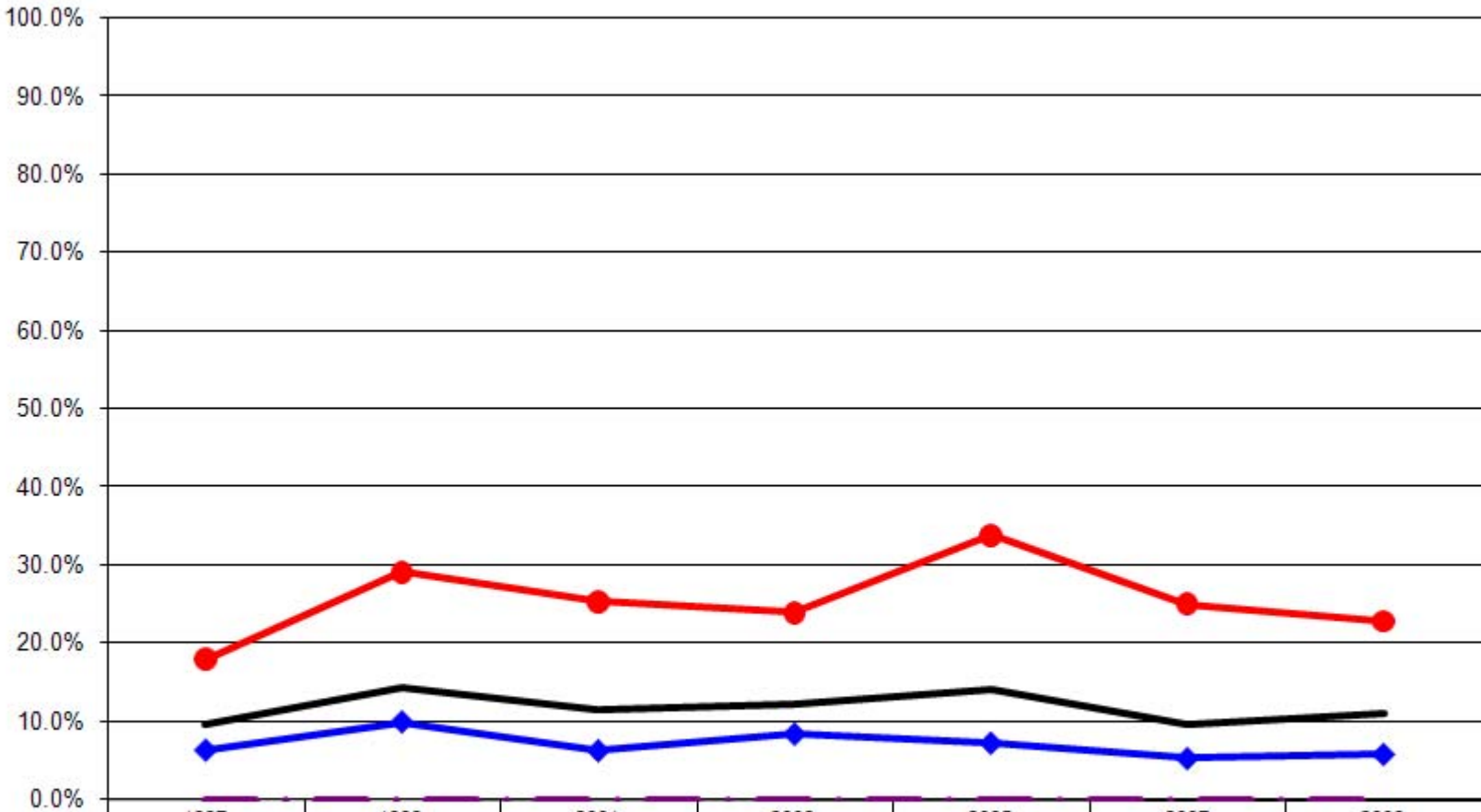
	1997	1999	2001	2003	2005	2007	2009
— Total	9.6%	14.4%	11.6%	12.3%	14.3%	9.7%	11.1%
—◆ Male	6.1%	13.0%	11.2%	12.6%	11.7%	10.0%	10.7%
—● Female	12.2%	15.7%	11.9%	11.9%	16.0%	9.4%	11.6%
- - - US Total Rate*	0.0%	0.0%	0.0%	0.0%	0.0%	0.0%	0.0%

Physical Health Not Good Eight or More Days By Age
(Ages: 18-64)



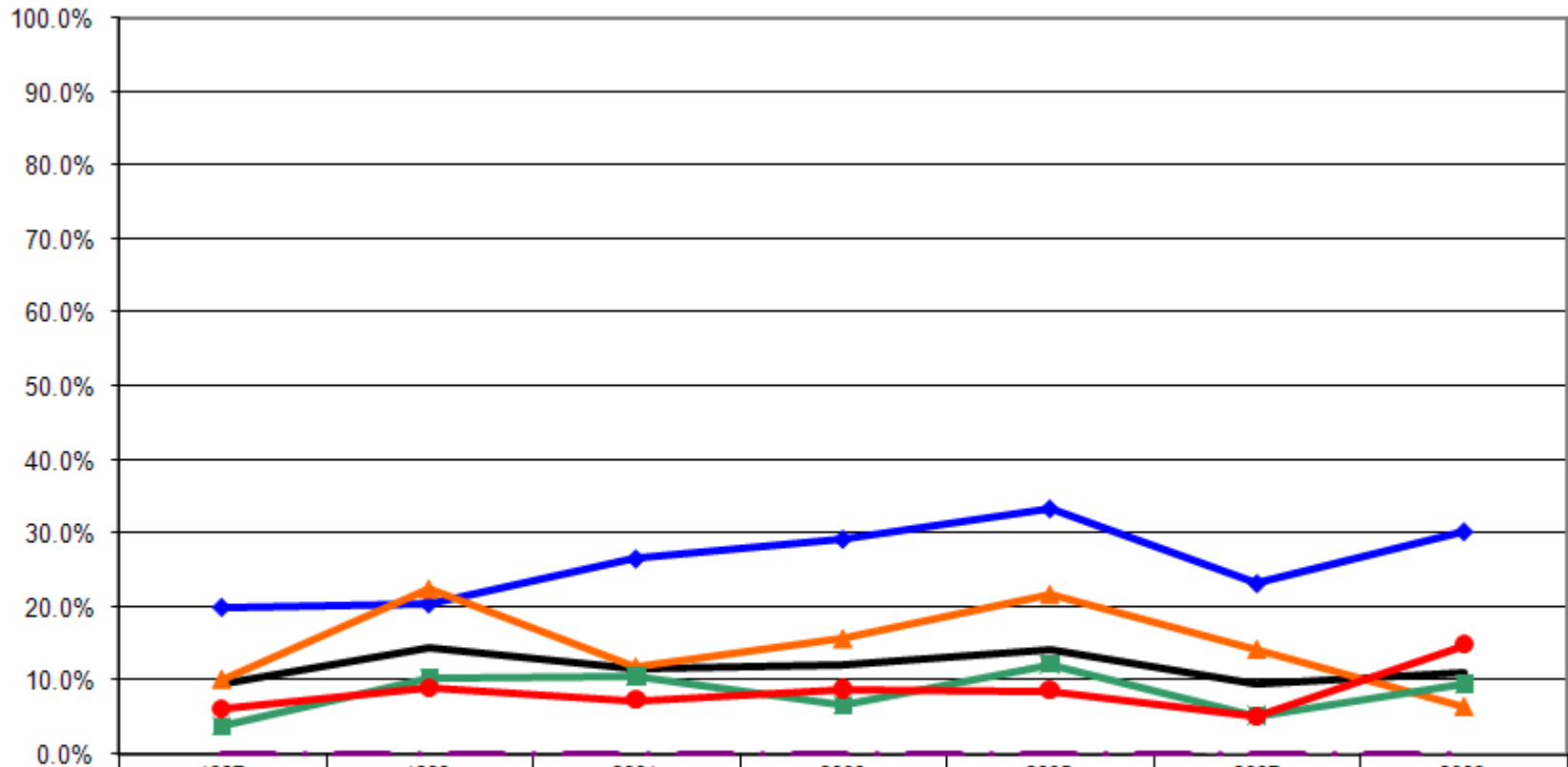
	1997	1999	2001	2003	2005	2007	2009
— Total	9.6%	14.4%	11.6%	12.3%	14.3%	9.7%	11.1%
—● 18-24	5.7%	7.5%	3.5%	7.2%	10.0%	0.0%	2.3%
—● 25-44	8.3%	12.0%	9.2%	9.1%	9.4%	6.1%	9.5%
—● 45-64	12.7%	19.6%	16.1%	17.9%	20.0%	13.9%	16.4%
— - - - US Total Rate*							

Physical Health Not Good Eight or More Days By Employment Status
(Ages: 18-64)



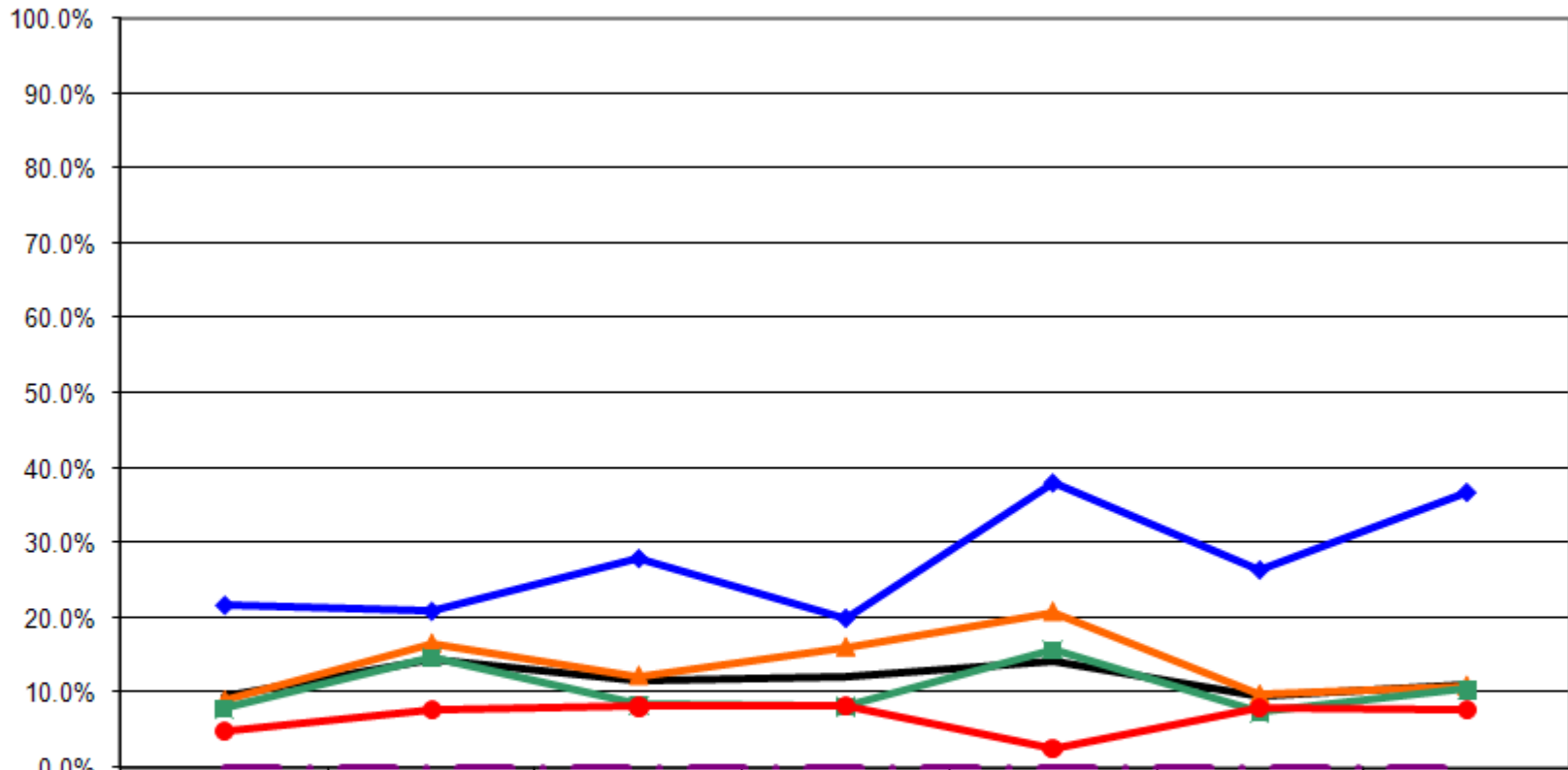
	1997	1999	2001	2003	2005	2007	2009
— Total	9.6%	14.4%	11.6%	12.3%	14.3%	9.7%	11.1%
—◆— Employed	6.4%	10.0%	6.3%	8.4%	7.3%	5.3%	5.8%
—●— Not Employed	18.0%	29.1%	25.3%	24.0%	33.9%	25.0%	22.8%
- - - US Total Rate*							

**Physical Health Not Good Eight or More Days By Income
(Ages: 18-64)**



	1997	1999	2001	2003	2005	2007	2009
— Total	9.6%	14.4%	11.6%	12.3%	14.3%	9.7%	11.1%
—◆— <\$15K	20.0%	20.5%	26.6%	29.2%	33.3%	23.2%	30.2%
—▲— \$15-25K	10.2%	22.5%	11.9%	15.7%	21.7%	14.3%	6.5%
—■— \$25-50K	3.9%	10.4%	10.6%	6.6%	12.2%	5.3%	9.6%
—●— \$50K+	6.3%	9.1%	7.5%	8.9%	8.8%	5.3%	14.9%
- - - - US Total Rate*							

Physical Health Not Good Eight or More Days By Education
(Ages: 18-64)



	1997	1999	2001	2003	2005	2007	2009
— Total	9.6%	14.4%	11.6%	12.3%	14.3%	9.7%	11.1%
—◆— <HS	21.7%	20.9%	28.0%	20.0%	38.1%	26.5%	36.8%
—▲— HS or GED	9.0%	16.6%	12.3%	16.1%	20.8%	9.8%	10.9%
—■— Some College	7.9%	14.7%	8.4%	8.2%	15.7%	7.4%	10.4%
—●— College Degree +	4.9%	7.7%	8.2%	8.3%	2.6%	8.0%	7.8%
- - - US Total Rate*							

Interview Year 1997

		For how many days during the past 30 days was your physical health not good?					
		None	1-3 Days	4-6 Days	7-10 Days	11-19 Days	20 or more days
Total		65.6%	15.0%	5.3%	7.1%	1.8%	5.3%
Gender	Male	71.7%	15.1%	3.8%	4.7%	0.5%	4.2%
	Female	61.0%	14.9%	6.4%	8.9%	2.8%	6.0%
Age	18 - 24	69.8%	13.2%	9.4%	5.7%	1.9%	0.0%
	25 - 34	57.0%	20.3%	5.5%	11.7%	3.9%	1.6%
	35 - 44	68.4%	16.5%	4.5%	2.3%	1.5%	6.8%
	45 - 54	72.7%	12.1%	1.0%	5.1%	1.0%	8.1%
	55 - 64	63.0%	8.6%	8.6%	11.1%	0.0%	8.6%
Employed	Yes	68.0%	17.5%	4.7%	5.8%	1.7%	2.2%
	No	59.3%	8.1%	6.7%	10.4%	2.2%	13.3%
Income	< \$15K	59.6%	11.5%	3.8%	8.7%	1.9%	14.4%
	\$15-25K	54.0%	21.8%	6.9%	9.2%	2.3%	5.7%
	\$25-50K	69.7%	17.4%	4.5%	6.2%	0.6%	1.7%
	\$50K +	76.0%	8.3%	6.3%	5.2%	4.2%	0.0%
Education	Less than High School	54.4%	14.7%	2.9%	11.8%	1.5%	14.7%
	High School Diploma or GED	66.5%	14.2%	6.1%	6.1%	2.0%	5.1%
	Some College/Technical	67.5%	14.3%	6.3%	6.3%	0.8%	4.8%
	College Degree or Higher	68.9%	17.5%	3.9%	6.8%	2.9%	0.0%

Interview Year 1999

		For how many days during the past 30 days was your physical health not good?					
		None	1-3 Days	4-6 Days	7-10 Days	11-19 Days	20 or more days
Total		66.1%	14.0%	3.9%	4.3%	3.3%	8.5%
Gender	Male	71.0%	11.0%	3.7%	2.9%	2.4%	9.0%
	Female	61.6%	16.6%	4.1%	5.5%	4.1%	8.1%
Age	18 - 24	71.6%	16.4%	3.0%	1.5%	3.0%	4.5%
	25 - 34	64.5%	19.6%	4.7%	4.7%	0.9%	5.6%
	35 - 44	67.4%	12.8%	3.5%	5.0%	2.1%	9.2%
	45 - 54	57.3%	15.4%	3.4%	6.0%	2.6%	15.4%
	55 - 64	73.8%	4.8%	4.8%	2.4%	9.5%	4.8%
Employed	Yes	71.5%	13.9%	3.3%	3.8%	1.3%	6.3%
	No	49.0%	13.7%	5.9%	4.9%	11.8%	14.7%
Income	< \$15K	57.3%	17.1%	3.7%	4.9%	6.1%	11.0%
	\$15-25K	56.8%	12.5%	5.7%	3.4%	5.7%	15.9%
	\$25-50K	72.4%	12.5%	3.6%	3.6%	2.6%	5.2%
	\$50K +	70.6%	13.8%	3.7%	5.5%	0.9%	5.5%
Education	Less than High School	60.5%	16.3%	2.3%	0.0%	7.0%	14.0%
	High School Diploma or GED	68.8%	10.4%	3.0%	3.5%	3.5%	10.9%
	Some College/Technical	59.4%	18.1%	5.2%	5.8%	4.5%	7.1%
	College Degree or Higher	72.4%	13.8%	4.3%	5.2%	0.0%	4.3%

Interview Year 2001

		For how many days during the past 30 days was your physical health not good?					
		None	1-3 Days	4-6 Days	7-10 Days	11-19 Days	20 or more days
Total		66.5%	16.3%	3.4%	4.1%	2.8%	6.9%
Gender	Male	69.2%	13.4%	3.6%	4.5%	0.8%	8.5%
	Female	64.2%	18.8%	3.1%	3.8%	4.5%	5.6%
Age	18 - 24	63.2%	26.3%	3.5%	5.3%	1.8%	0.0%
	25 - 34	70.5%	18.1%	1.9%	3.8%	2.9%	2.9%
	35 - 44	70.1%	14.6%	2.8%	4.9%	1.4%	6.3%
	45 - 54	59.0%	17.2%	4.5%	3.7%	4.5%	11.2%
	55 - 64	69.5%	9.5%	4.2%	3.2%	3.2%	10.5%
Employed	Yes	71.5%	17.8%	2.8%	3.3%	1.0%	3.6%
	No	53.2%	12.1%	5.0%	6.4%	7.8%	15.6%
Income	< \$15K	53.2%	14.5%	3.2%	6.5%	8.1%	14.5%
	\$15-25K	68.7%	14.5%	3.6%	1.2%	1.2%	10.8%
	\$25-50K	65.0%	18.0%	3.9%	5.3%	2.9%	4.9%
	\$50K +	71.6%	15.7%	3.7%	3.0%	1.5%	4.5%
Education	Less than High School	54.2%	6.3%	2.1%	12.5%	8.3%	16.7%
	High School Diploma or GED	66.8%	16.1%	2.5%	4.0%	3.0%	7.5%
	Some College/Technical	66.9%	18.7%	4.8%	4.2%	1.8%	3.6%
	College Degree or Higher	70.5%	17.2%	3.3%	0.8%	1.6%	6.6%

Interview Year 2003

		For how many days during the past 30 days was your physical health not good?					
		None	1-3 Days	4-6 Days	7-10 Days	11-19 Days	20 or more days
Total		66.5%	13.3%	4.4%	5.0%	3.6%	7.2%
Gender	Male	72.9%	9.4%	3.4%	3.4%	4.5%	6.4%
	Female	59.1%	17.7%	5.6%	6.9%	2.6%	8.2%
Age	18 - 24	63.8%	18.8%	5.8%	4.3%	4.3%	2.9%
	25 - 34	70.3%	16.2%	2.7%	5.4%	3.6%	1.8%
	35 - 44	72.1%	9.3%	3.1%	5.4%	3.1%	7.0%
	45 - 54	61.7%	10.3%	5.6%	4.7%	4.7%	13.1%
	55 - 64	61.0%	14.6%	6.1%	4.9%	2.4%	11.0%
Employed	Yes	70.4%	14.7%	3.5%	4.5%	2.9%	4.0%
	No	55.1%	9.3%	6.8%	5.9%	5.9%	16.9%
Income	< \$15K	46.9%	14.1%	4.7%	6.3%	4.7%	23.4%
	\$15-25K	61.8%	5.9%	5.9%	11.8%	5.9%	8.8%
	\$25-50K	66.9%	19.6%	4.9%	3.1%	2.5%	3.1%
	\$50K +	75.3%	11.0%	2.7%	4.1%	3.4%	3.4%
Education	Less than High School	47.4%	18.4%	0.0%	18.4%	7.9%	7.9%
	High School Diploma or GED	62.9%	13.7%	4.6%	4.1%	3.6%	11.2%
	Some College/Technical	73.6%	8.3%	6.3%	4.9%	2.1%	4.9%
	College Degree or Higher	69.7%	16.8%	3.4%	2.5%	4.2%	3.4%

Interview Year 2005

For how many days during the past 30 days was your physical health not good?

		None	1-3 Days	4-6 Days	7-10 Days	11-19 Days	20 or more days
Total		68.4%	12.7%	3.0%	3.4%	3.0%	9.7%
Gender	Male	76.3%	8.2%	1.5%	4.6%	1.5%	7.7%
	Female	62.9%	15.7%	3.9%	2.5%	3.9%	11.1%
Age	18 - 24	72.5%	7.5%	5.0%	7.5%	0.0%	7.5%
	25 - 34	68.5%	20.7%	2.2%	0.0%	4.3%	4.3%
	35 - 44	71.5%	13.8%	2.3%	3.1%	3.1%	6.2%
	45 - 54	65.5%	10.3%	5.2%	4.3%	2.6%	12.1%
	55 - 64	65.6%	8.3%	1.0%	4.2%	3.1%	17.7%
Employed	Yes	74.8%	12.7%	3.1%	3.1%	2.5%	3.7%
	No	49.6%	12.4%	2.5%	4.1%	4.1%	27.3%
Income	< \$15K	44.2%	18.6%	2.3%	4.7%	4.7%	25.6%
	\$15-25K	56.1%	13.6%	3.0%	7.6%	1.5%	18.2%
	\$25-50K	70.5%	13.2%	3.1%	3.1%	4.7%	5.4%
	\$50K +	74.9%	12.3%	2.3%	2.3%	2.3%	5.8%
Education	Less than High School	47.6%	9.5%	4.8%	4.8%	0.0%	33.3%
	High School Diploma or GED	63.1%	10.0%	3.1%	5.0%	3.8%	15.0%
	Some College/Technical	66.7%	14.5%	2.2%	2.9%	5.1%	8.7%
	College Degree or Higher	77.9%	14.3%	3.2%	1.9%	0.6%	1.9%

Interview Year 2007

For how many days during the past 30 days was your physical health not good?

		None	1-3 Days	4-6 Days	7-10 Days	11-19 Days	20 or more days
Total		72.0%	12.2%	5.1%	2.8%	1.6%	6.2%
Gender	Male	76.1%	9.3%	3.8%	2.8%	1.4%	6.6%
	Female	67.6%	15.3%	6.5%	2.9%	1.8%	5.8%
Age	18 - 24	80.0%	14.3%	5.7%	0.0%	0.0%	0.0%
	25 - 34	81.2%	12.0%	1.7%	3.4%	0.9%	0.9%
	35 - 44	71.3%	13.2%	5.4%	5.4%	1.6%	3.1%
	45 - 54	67.1%	11.2%	7.7%	0.0%	2.8%	11.2%
	55 - 64	67.9%	12.1%	5.0%	3.6%	1.4%	10.0%
Employed	Yes	76.7%	12.5%	4.9%	2.0%	0.7%	3.1%
	No	56.1%	9.3%	6.5%	5.6%	4.7%	17.8%
Income	< \$15K	52.7%	12.7%	10.9%	3.6%	3.6%	16.4%
	\$15-25K	69.4%	8.2%	6.1%	4.1%	2.0%	10.2%
	\$25-50K	73.9%	13.3%	5.9%	2.7%	1.1%	3.2%
	\$50K +	79.9%	11.6%	3.2%	1.1%	0.5%	3.7%
Education	Less than High School	51.5%	9.1%	9.1%	12.1%	6.1%	12.1%
	High School Diploma or GED	70.6%	12.7%	6.4%	2.0%	1.5%	6.9%
	Some College/Technical	72.9%	13.3%	5.3%	3.2%	0.5%	4.8%
	College Degree or Higher	78.3%	10.9%	2.2%	1.4%	1.4%	5.8%

For how many days during the past 30 days was your physical health not good?

		None	1-3 Days	4-6 Days	7-10 Days	11-19 Days	20 or more days
Total		62.4%	18.1%	7.4%	3.4%	2.4%	6.4%
Gender	Male	62.2%	18.5%	6.9%	4.6%	2.3%	5.4%
	Female	62.6%	17.7%	7.8%	2.1%	2.5%	7.4%
Age	18 - 24	80.2%	14.8%	2.5%	0.0%	1.2%	1.2%
	25 - 34	66.0%	15.1%	6.6%	6.6%	1.9%	3.8%
	35 - 44	63.8%	21.0%	5.7%	1.9%	3.8%	3.8%
	45 - 54	50.9%	26.9%	11.1%	2.8%	2.8%	5.6%
	55 - 64	54.9%	11.8%	9.8%	4.9%	2.0%	16.7%
Employed	Yes	67.9%	19.1%	6.6%	1.7%	2.0%	2.6%
	No	50.0%	16.0%	9.0%	7.1%	3.2%	14.7%
Income	< \$15K	51.2%	14.6%	2.4%	0.0%	2.4%	29.3%
	\$15-25K	58.5%	19.5%	12.2%	2.4%	2.4%	4.9%
	\$25-50K	62.6%	19.1%	7.6%	3.1%	3.1%	4.6%
	\$50K +	67.6%	14.1%	1.4%	2.8%	4.2%	9.9%
Education	Less than High School	35.3%	17.6%	5.9%	0.0%	5.9%	35.3%
	High School Diploma or GED	59.5%	19.4%	8.4%	5.7%	2.2%	4.8%
	Some College/Technical	62.1%	18.3%	8.9%	1.8%	3.6%	5.3%
	College Degree or Higher	75.0%	14.8%	2.3%	1.1%	0.0%	6.8%