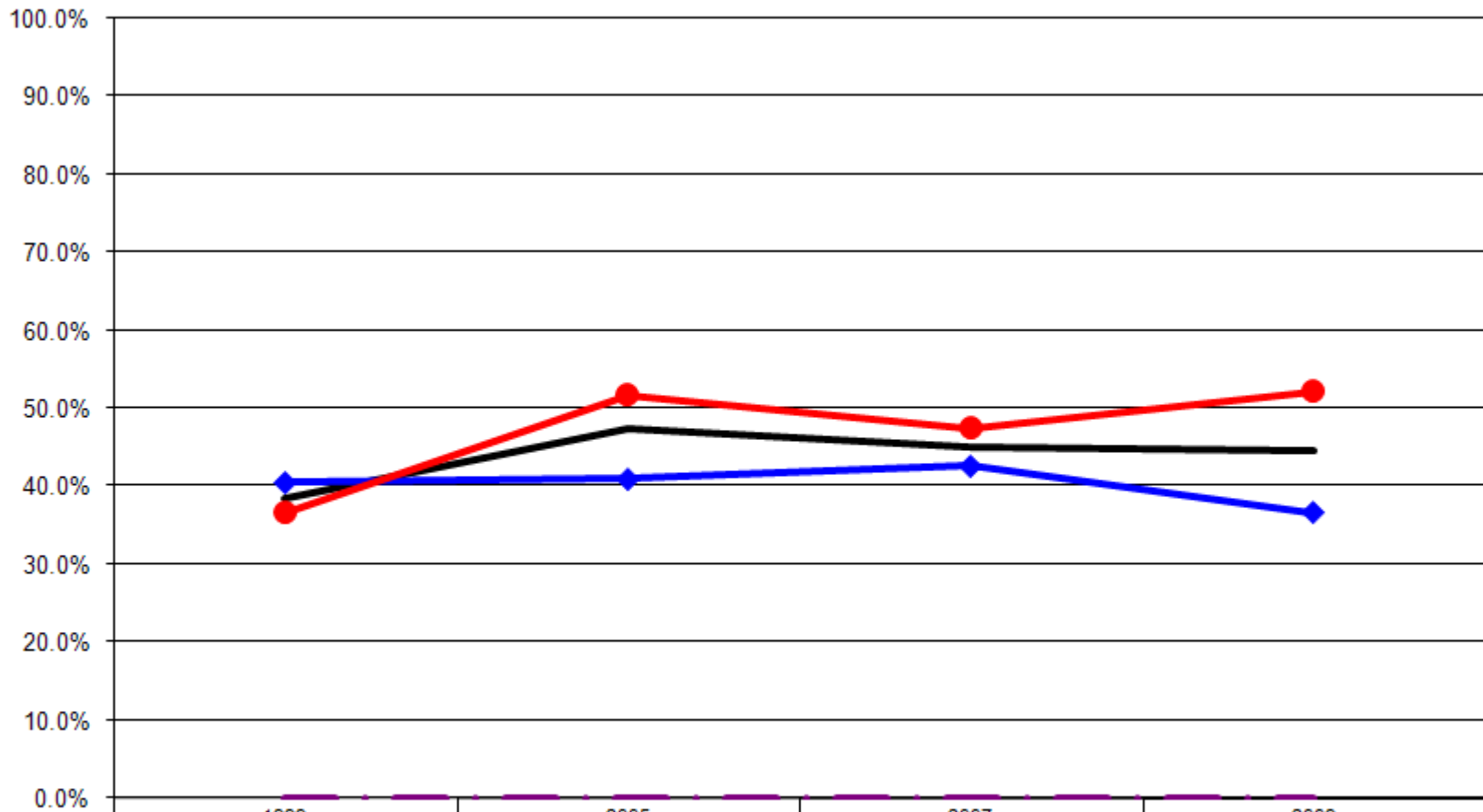


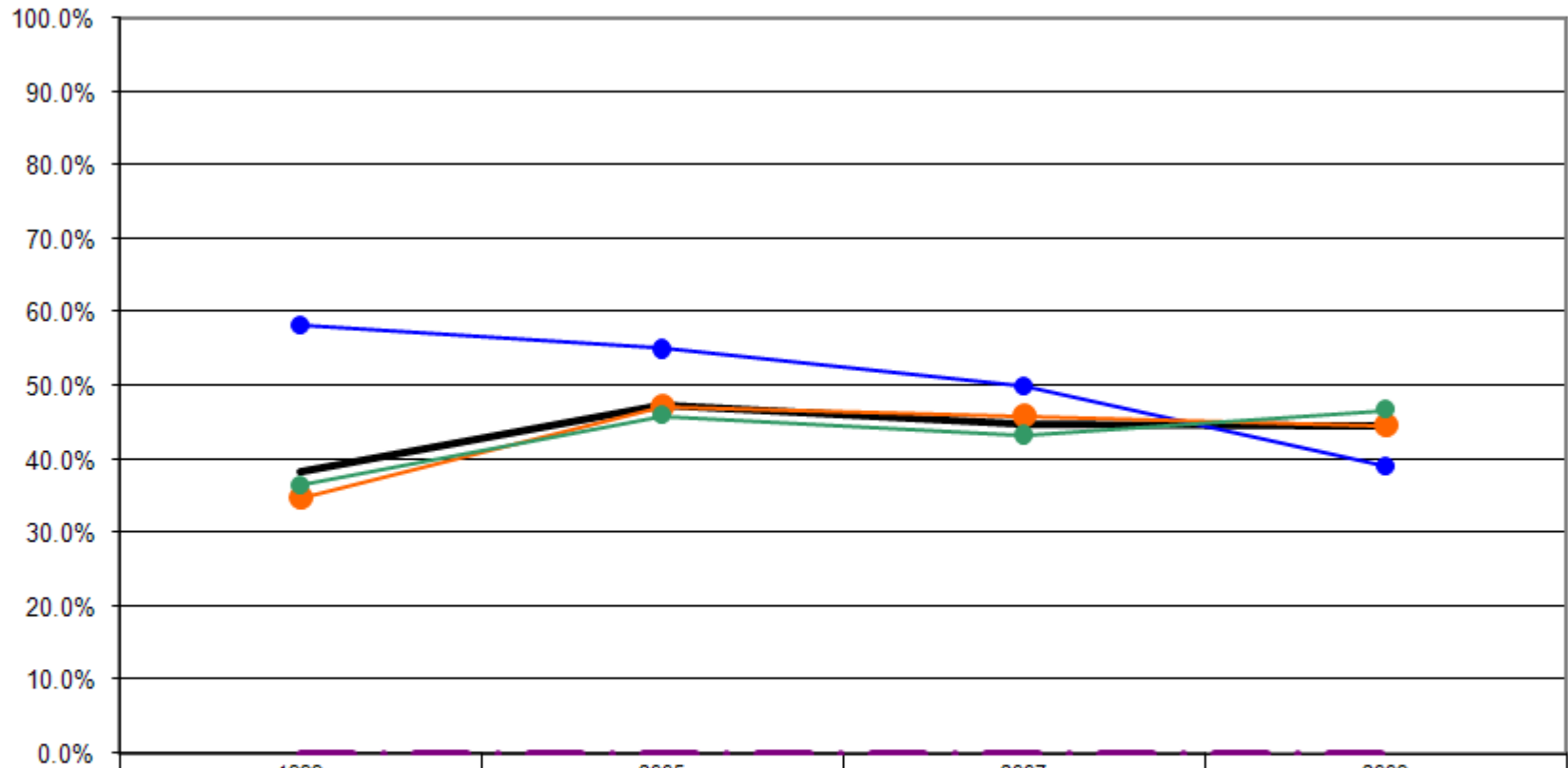
Ages: 18-64 Survey Population Always get the social and emotional support needed

Always Get Social & Emotional Support By Gender (Ages: 18-64)



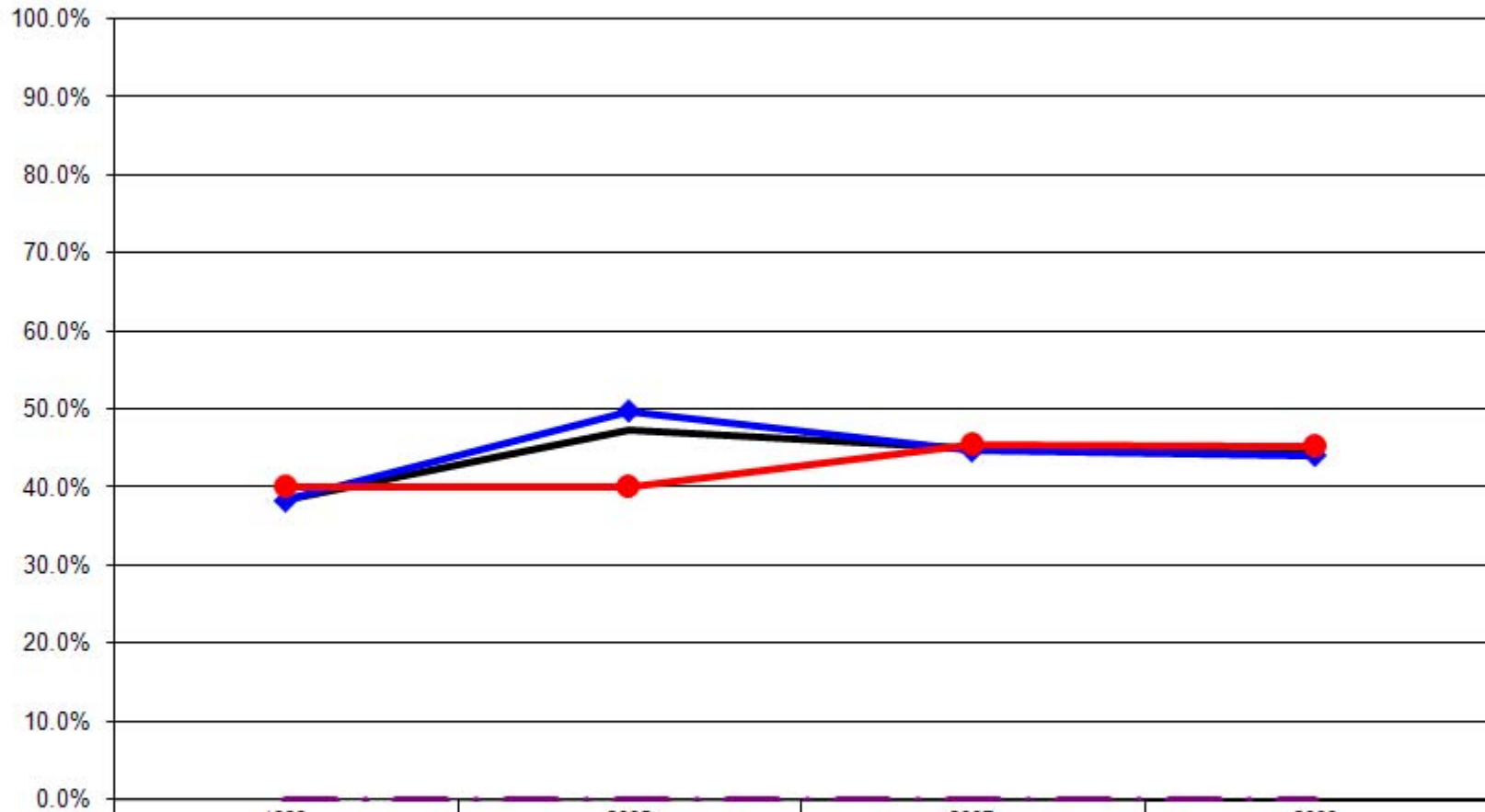
	1999	2005	2007	2009
— Total	38.5%	47.4%	44.9%	44.6%
—◆ Male	40.5%	40.9%	42.6%	36.7%
—● Female	36.6%	51.8%	47.4%	52.2%
- - - - US Total Rate*	40.0%	40.0%	40.0%	40.0%

Always Get Social & Emotional Support By Age (Ages: 18-64)



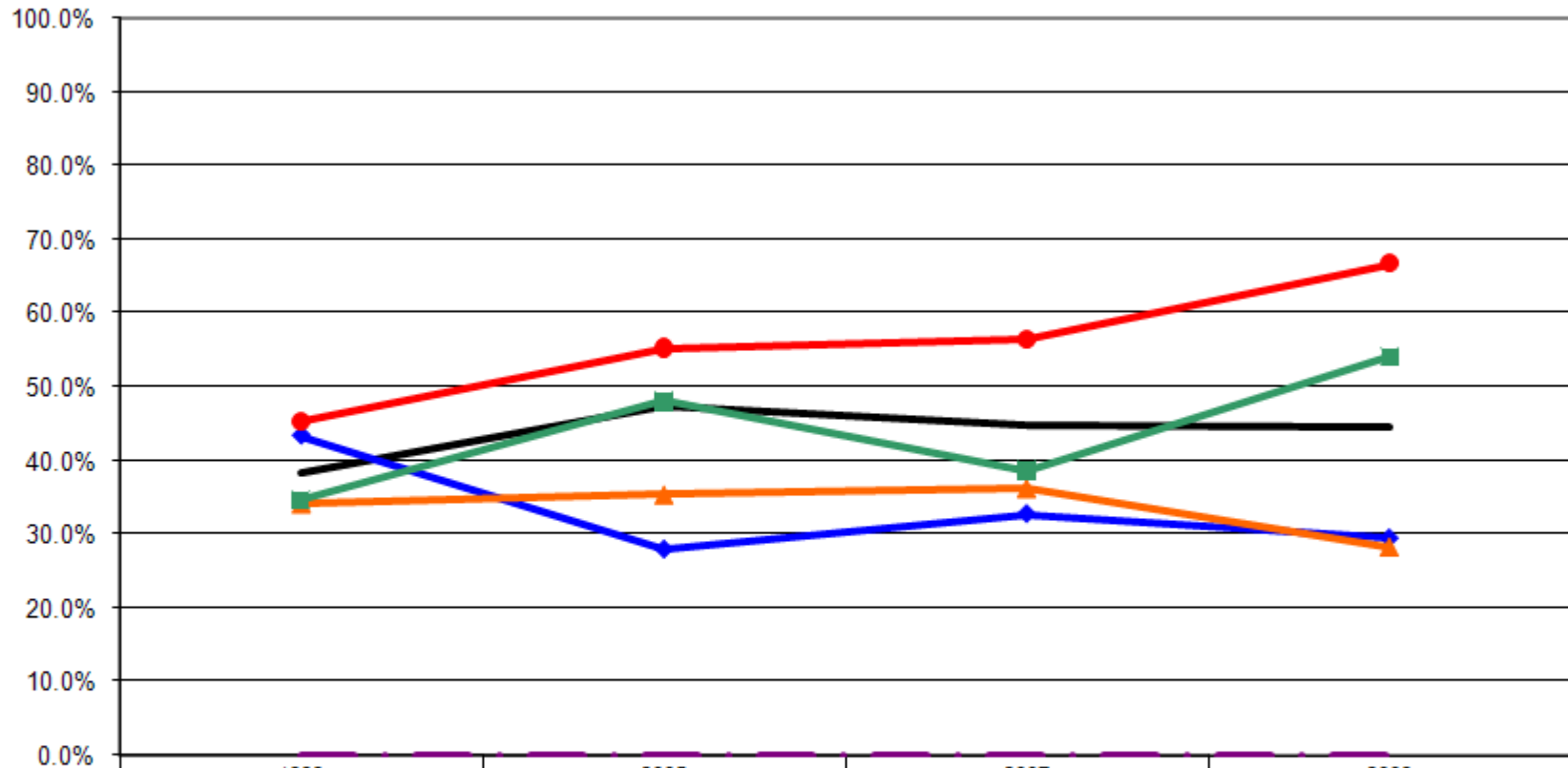
	1999	2005	2007	2009
— Total	38.5%	47.4%	44.9%	44.6%
—● 18-24	58.2%	55.0%	50.0%	39.2%
—● 25-44	34.8%	47.3%	46.1%	44.6%
—● 45-64	36.5%	46.0%	43.3%	46.7%
- - - US Total Rate*	0.0%	0.0%	0.0%	0.0%

Always Get Social & Emotional Support By Employment Status (Ages: 18-64)



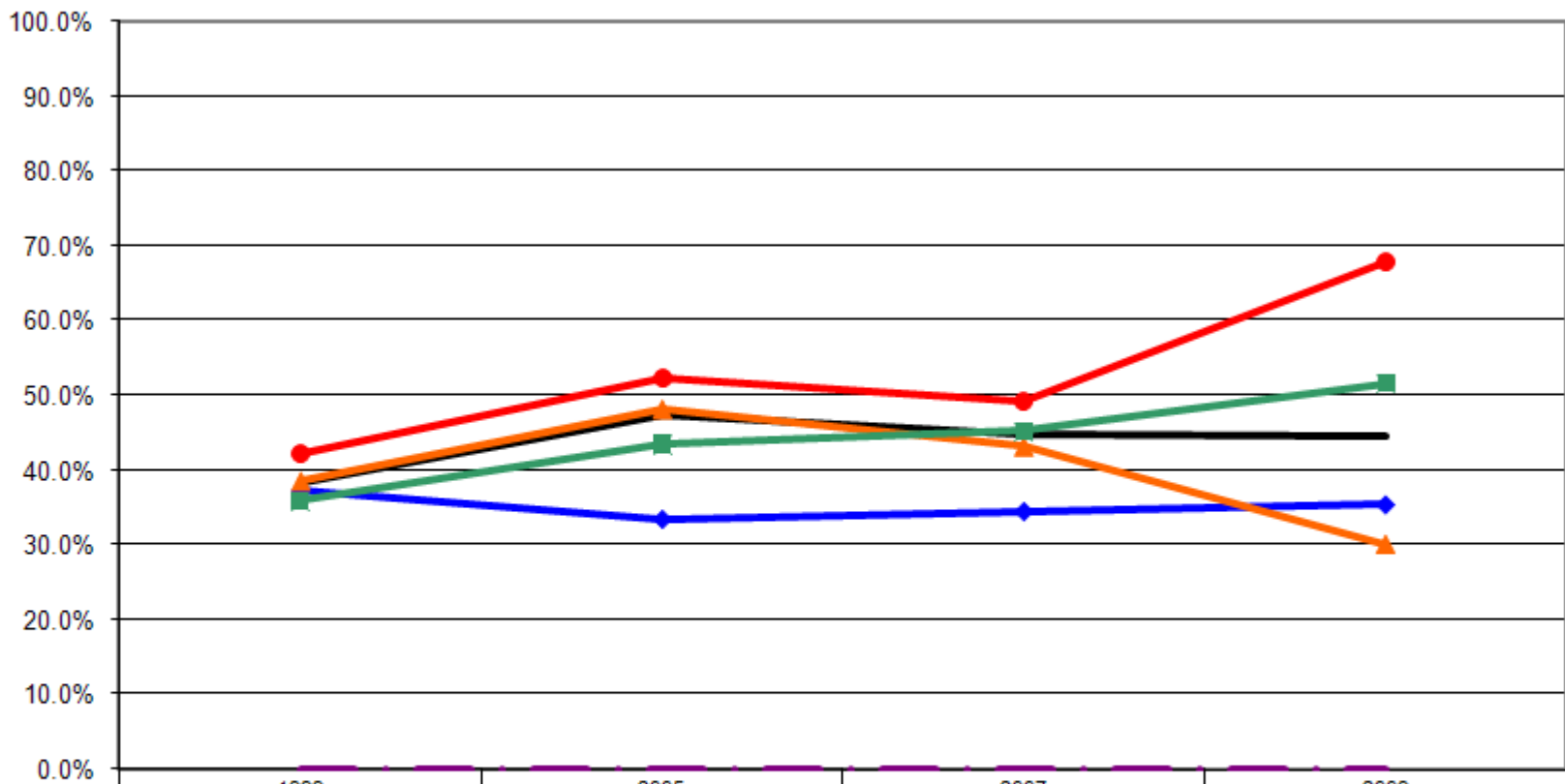
	1999	2005	2007	2009
— Total	38.5%	47.4%	44.9%	44.6%
—◆— Employed	38.4%	49.9%	44.8%	44.2%
—●— Not Employed	40.2%	40.2%	45.6%	45.5%
- - - - US Total Rate*				

Always Get Social & Emotional Support By Income (Ages: 18-64)



	1999	2005	2007	2009
— Total	38.5%	47.4%	44.9%	44.6%
—♦— <\$15K	43.4%	27.9%	32.7%	29.4%
—▲— \$15-25K	34.1%	35.3%	36.2%	28.2%
—■— \$25-50K	34.7%	48.1%	38.7%	54.1%
—●— \$50K+	45.5%	55.3%	56.5%	66.7%
- - - US Total Rate*				

Always Get Social & Emotional Support By Education (Ages: 18-64)



	1999	2005	2007	2009
— Total	38.5%	47.4%	44.9%	44.6%
—◆— <HS	37.2%	33.3%	34.4%	35.3%
—▲— HS or GED	38.5%	48.2%	43.1%	30.1%
—■— Some College	35.9%	43.5%	45.2%	51.6%
—●— College Degree +	42.2%	52.3%	49.3%	67.9%
- - - US Total Rate*				

Interview Year 1999

		How often do you get the social and emotional support you need?				
		Always	Usually	Sometimes	Rarely	Never
Total		38.5%	40.0%	15.6%	4.0%	1.9%
Gender	Male	40.5%	39.3%	15.0%	2.0%	3.2%
	Female	36.6%	40.7%	16.1%	5.9%	0.7%
Age	18 - 24	58.2%	25.4%	11.9%	4.5%	0.0%
	25 - 34	37.6%	42.2%	16.5%	0.9%	2.8%
	35 - 44	32.6%	38.3%	20.6%	5.7%	2.8%
	45 - 54	31.7%	44.2%	17.5%	5.0%	1.7%
	55 - 64	43.4%	45.8%	6.0%	3.6%	1.2%
Employed	Yes	38.4%	40.9%	15.0%	3.7%	2.0%
	No	40.2%	37.3%	16.7%	3.9%	2.0%
Income	< \$15K	43.4%	30.1%	15.7%	9.6%	1.2%
	\$15-25K	34.1%	39.8%	21.6%	1.1%	3.4%
	\$25-50K	34.7%	41.5%	17.1%	4.7%	2.1%
	\$50K +	45.5%	42.7%	9.1%	2.7%	0.0%
Education	Less than High School	37.2%	25.6%	20.9%	11.6%	4.7%
	High School Diploma or GED	38.5%	39.5%	16.1%	2.9%	2.9%
	Some College/Technical	35.9%	41.0%	17.3%	4.5%	1.3%
	College Degree or Higher	42.2%	44.8%	10.3%	2.6%	0.0%

Interview Year 2005

		How often do you get the social and emotional support you need?				
		Always	Usually	Sometimes	Rarely	Never
Total		47.4%	33.1%	13.5%	3.4%	2.7%
Gender	Male	40.9%	39.4%	13.5%	3.1%	3.1%
	Female	51.8%	28.7%	13.5%	3.5%	2.5%
Age	18 - 24	55.0%	25.0%	12.5%	5.0%	2.5%
	25 - 34	50.5%	34.1%	11.0%	3.3%	1.1%
	35 - 44	45.0%	35.7%	15.5%	2.3%	1.6%
	45 - 54	47.0%	32.5%	13.7%	1.7%	5.1%
	55 - 64	44.9%	32.7%	13.3%	6.1%	3.1%
Employed	Yes	49.9%	36.0%	10.8%	2.3%	1.1%
	No	40.2%	24.6%	21.3%	6.6%	7.4%
Income	< \$15K	27.9%	25.6%	23.3%	11.6%	11.6%
	\$15-25K	35.3%	35.3%	17.6%	4.4%	7.4%
	\$25-50K	48.1%	41.1%	9.3%	1.6%	0.0%
	\$50K +	55.3%	31.2%	11.2%	2.4%	0.0%
Education	Less than High School	33.3%	19.0%	19.0%	9.5%	19.0%
	High School Diploma or GED	48.2%	31.7%	12.2%	5.5%	2.4%
	Some College/Technical	43.5%	31.9%	19.6%	2.2%	2.9%
	College Degree or Higher	52.3%	37.7%	8.6%	1.3%	0.0%

Interview Year 2007

		How often do you get the social and emotional support you need?				
		Always	Usually	Sometimes	Rarely	Never
Total		44.9%	41.8%	10.0%	2.0%	1.3%
Gender	Male	42.6%	44.4%	8.8%	2.8%	1.4%
	Female	47.4%	39.2%	11.2%	1.1%	1.1%
Age	18 - 24	50.0%	41.2%	5.9%	2.9%	0.0%
	25 - 34	44.3%	42.6%	12.2%	0.0%	0.9%
	35 - 44	47.6%	37.3%	9.5%	3.2%	2.4%
	45 - 54	41.7%	43.8%	11.8%	2.1%	0.7%
	55 - 64	45.1%	43.6%	7.5%	2.3%	1.5%
Employed	Yes	44.8%	43.7%	9.0%	1.4%	1.1%
	No	45.6%	35.0%	13.6%	3.9%	1.9%
Income	< \$15K	32.7%	40.0%	16.4%	7.3%	3.6%
	\$15-25K	36.2%	42.6%	19.1%	2.1%	0.0%
	\$25-50K	38.7%	49.5%	8.1%	2.2%	1.6%
	\$50K +	56.5%	40.3%	2.2%	0.5%	0.5%
Education	Less than High School	34.4%	21.9%	25.0%	12.5%	6.3%
	High School Diploma or GED	43.1%	40.6%	13.2%	1.5%	1.5%
	Some College/Technical	45.2%	45.7%	6.4%	1.6%	1.1%
	College Degree or Higher	49.3%	43.3%	6.7%	0.7%	0.0%

Interview Year 2009

		How often do you get the social and emotional support you need?				
		Always	Usually	Sometimes	Rarely	Never
Total		44.6%	38.0%	14.3%	1.5%	1.5%
Gender	Male	36.7%	43.0%	18.1%	0.9%	1.4%
	Female	52.2%	33.2%	10.8%	2.2%	1.7%
Age	18 - 24	39.2%	45.9%	13.5%	0.0%	1.4%
	25 - 34	49.5%	34.3%	14.1%	0.0%	2.0%
	35 - 44	39.6%	37.5%	16.7%	4.2%	2.1%
	45 - 54	44.7%	39.4%	13.8%	1.1%	1.1%
	55 - 64	48.9%	34.4%	13.3%	2.2%	1.1%
Employed	Yes	44.2%	39.4%	13.9%	1.0%	1.6%
	No	45.5%	35.0%	15.4%	2.8%	1.4%
Income	< \$15K	29.4%	35.3%	17.6%	8.8%	8.8%
	\$15-25K	28.2%	51.3%	15.4%	2.6%	2.6%
	\$25-50K	54.1%	33.6%	10.7%	0.8%	0.8%
	\$50K +	66.7%	29.2%	2.8%	0.0%	1.4%
Education	Less than High School	35.3%	23.5%	29.4%	11.8%	0.0%
	High School Diploma or GED	30.1%	45.4%	19.9%	1.5%	3.1%
	Some College/Technical	51.6%	34.8%	11.6%	1.3%	0.6%
	College Degree or Higher	67.9%	28.6%	3.6%	0.0%	0.0%