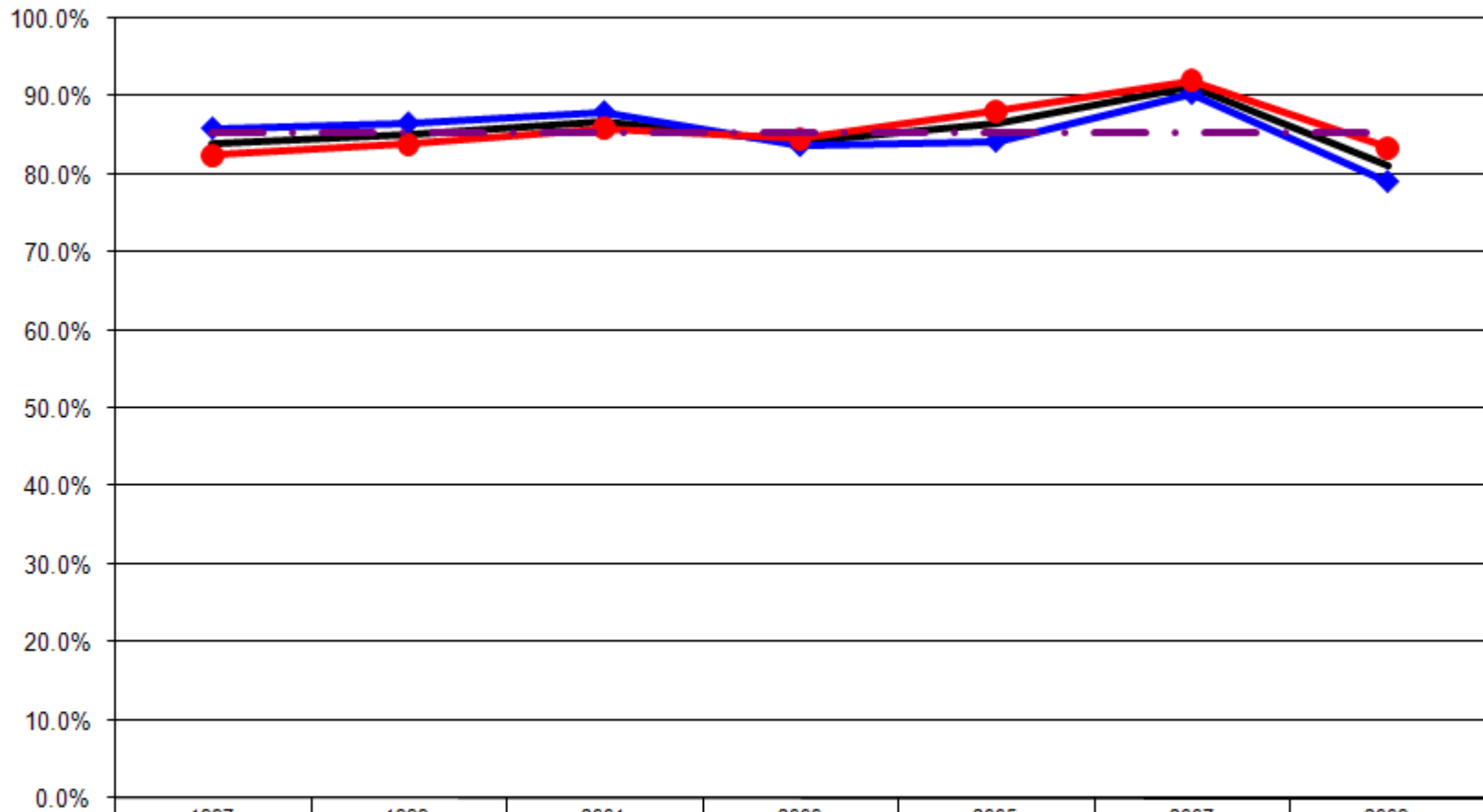


Ages: 18-64 Survey Population Health Insurance Coverage

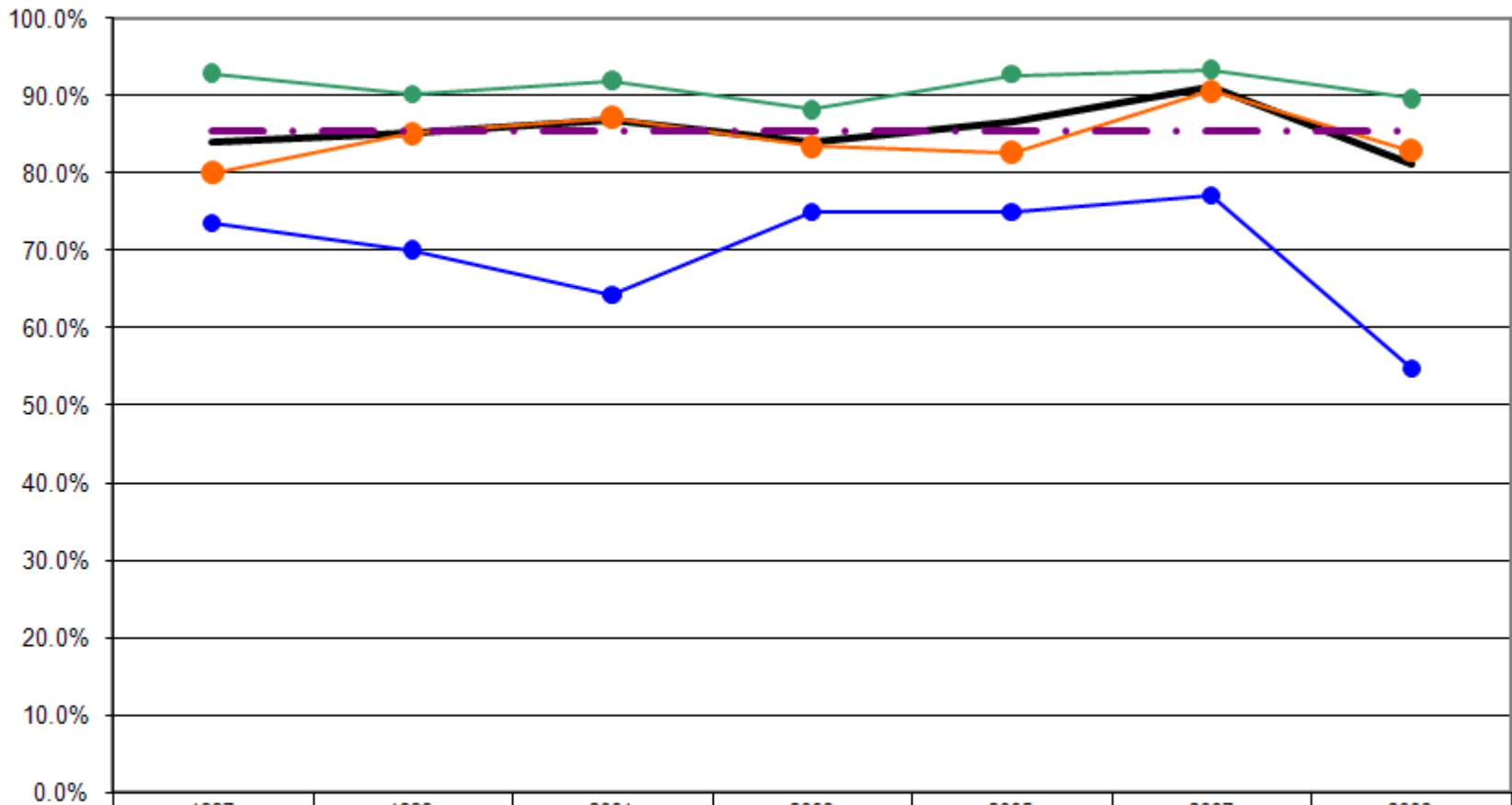
Health Insurance Coverage By Gender (Ages: 18-64)



	1997	1999	2001	2003	2005	2007	2009
— Total	84.0%	85.2%	86.9%	84.2%	86.6%	91.2%	81.2%
—◆— Male	85.9%	86.6%	88.0%	83.7%	84.3%	90.4%	79.1%
—●— Female	82.5%	83.9%	85.9%	84.7%	88.2%	92.1%	83.5%
- - - US Total Rate*							85.4%

*Source: 2008 CDC BRFSS

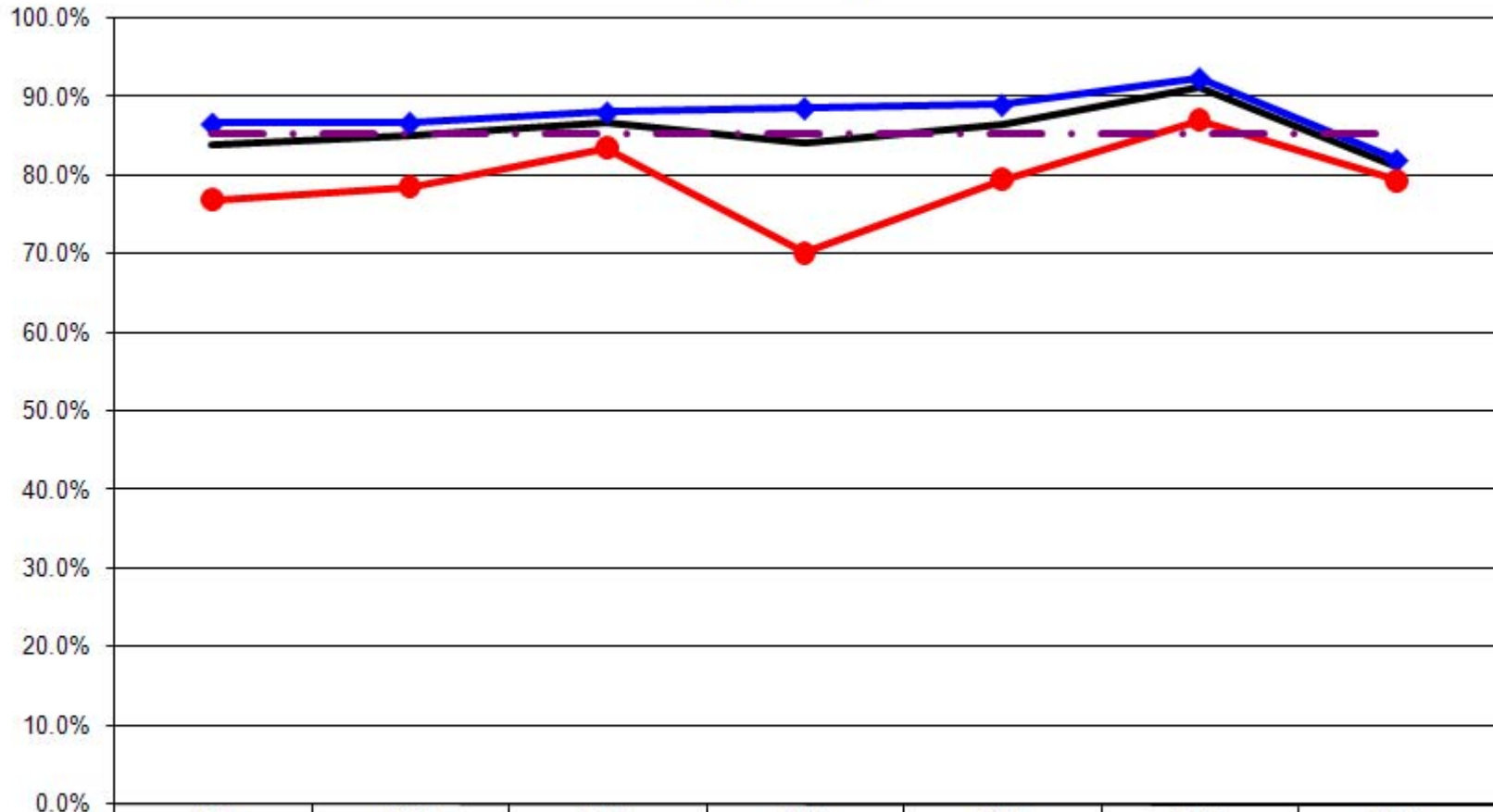
Health Insurance Coverage By Age (Ages: 18-64)



	1997	1999	2001	2003	2005	2007	2009
— Total	84.0%	85.2%	86.9%	84.2%	86.6%	91.2%	81.2%
● 18-24	73.6%	70.1%	64.3%	75.0%	75.0%	77.1%	54.9%
● 25-44	80.0%	85.1%	87.2%	83.5%	82.6%	90.7%	82.9%
● 45-64	92.8%	90.2%	91.9%	88.2%	92.7%	93.4%	89.6%
- - - US Total Rate*							85.4%

*Source: 2008 CDC BRFSS

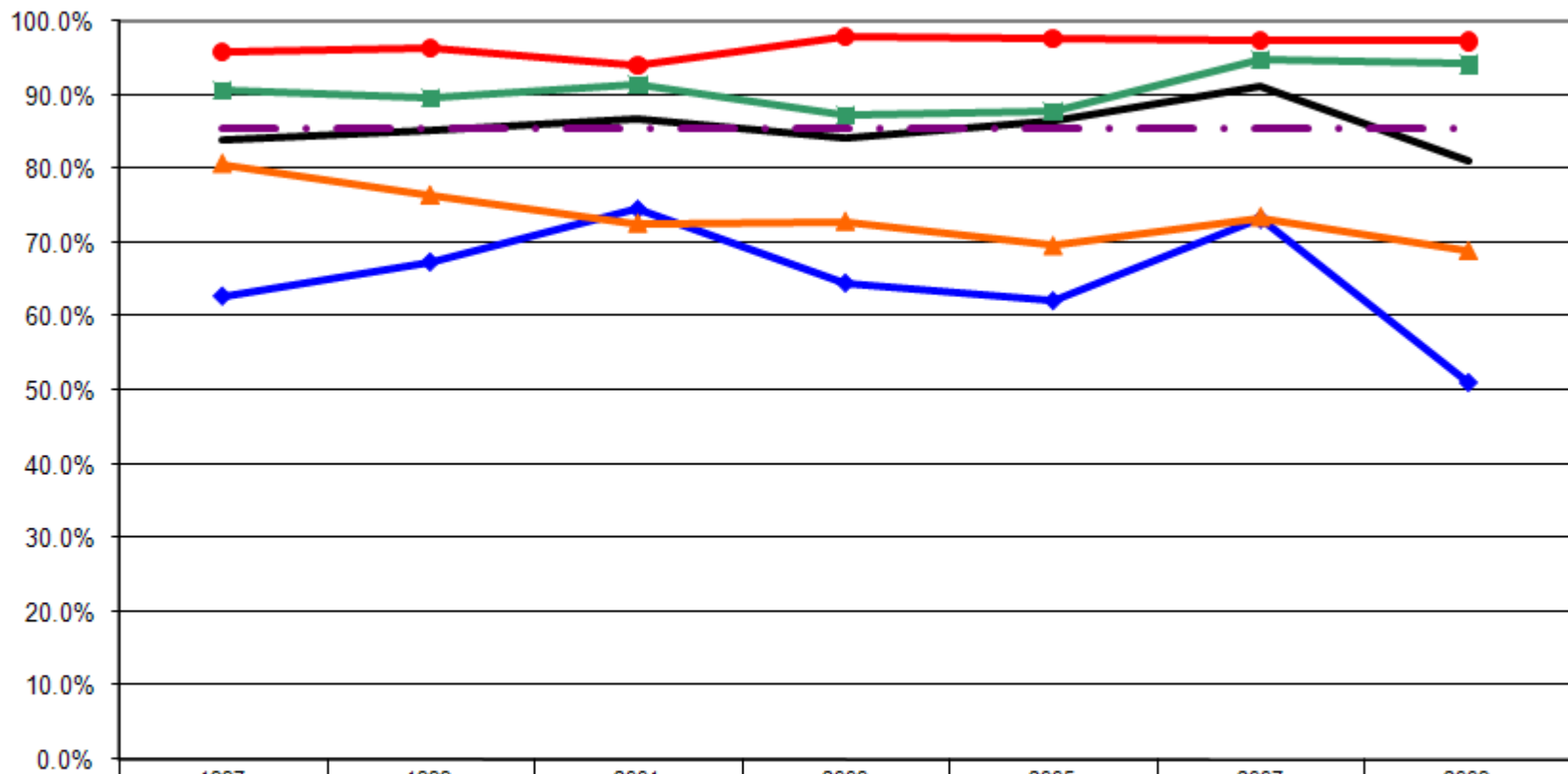
Health Insurance Coverage By Employment Status (Ages: 18-64)



	1997	1999	2001	2003	2005	2007	2009
— Total	84.0%	85.2%	86.9%	84.2%	86.6%	91.2%	81.2%
—◆— Employed	86.7%	86.8%	88.1%	88.7%	89.1%	92.4%	82.0%
—●— Not Employed	77.0%	78.6%	83.4%	70.2%	79.5%	87.0%	79.4%
- - - US Total Rate*							85.4%

*Source: 2008 CDC BRFSS

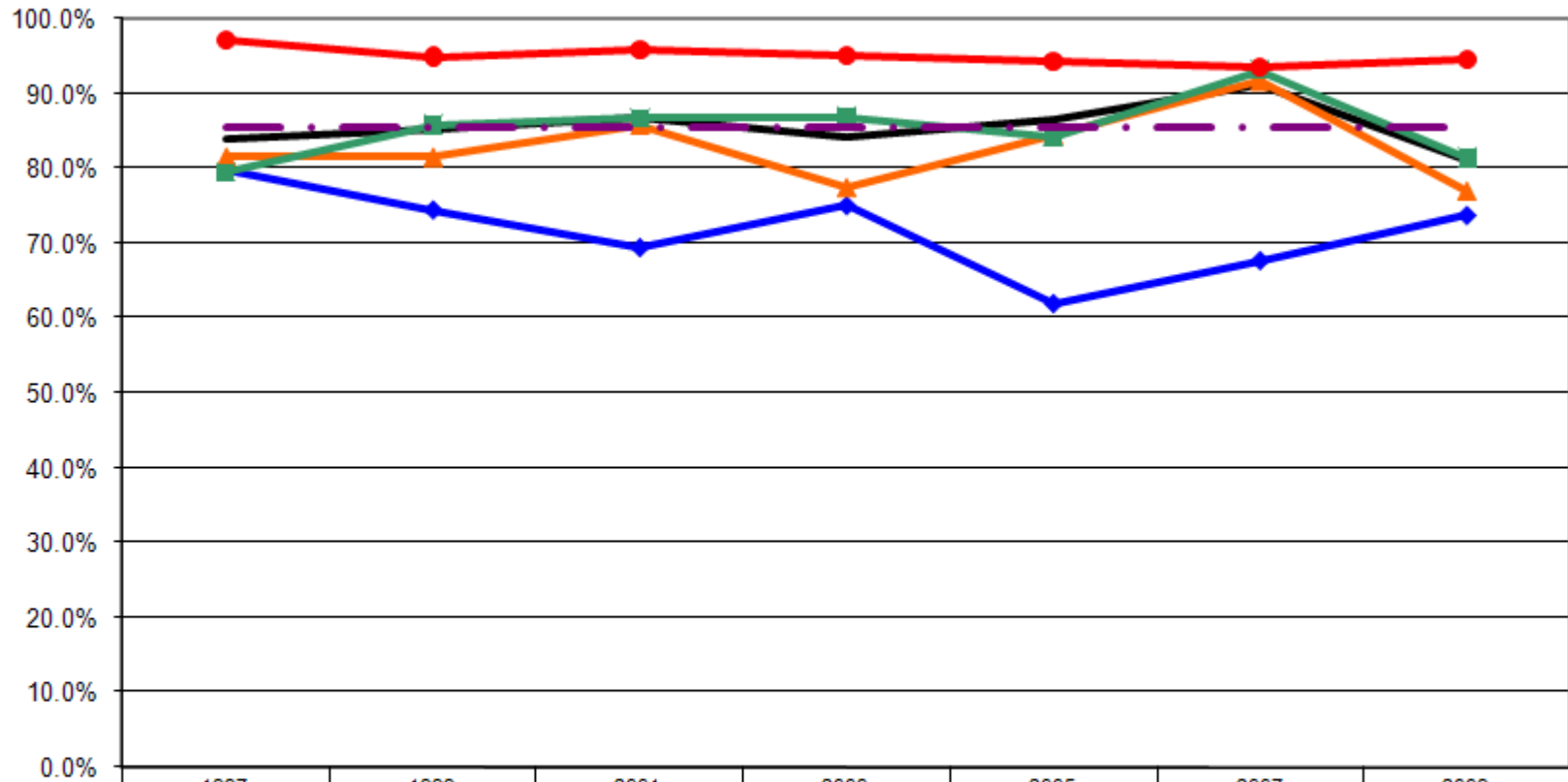
Health Insurance Coverage By Income (Ages: 18-64)



	1997	1999	2001	2003	2005	2007	2009
— Total	84.0%	85.2%	86.9%	84.2%	86.6%	91.2%	81.2%
—◆— < \$15K	62.9%	67.5%	74.6%	64.6%	62.2%	73.2%	51.2%
—▲— \$15-25K	80.7%	76.4%	72.6%	72.9%	69.6%	73.5%	68.9%
—■— \$25-50K	90.6%	89.6%	91.3%	87.3%	87.8%	94.7%	94.1%
—●— \$50K+	95.8%	96.3%	94.0%	97.9%	97.7%	97.4%	97.3%
-.-.- US Total Rate*							85.4%

*Source: 2008 CDC BRFSS

Health Insurance Coverage By Education (Ages: 18-64)



	1997	1999	2001	2003	2005	2007	2009
— Total	84.0%	85.2%	86.9%	84.2%	86.6%	91.2%	81.2%
—◆— <HS	79.7%	74.4%	69.4%	75.0%	61.9%	67.6%	73.7%
—▲— HS or GED	81.5%	81.5%	85.8%	77.4%	84.5%	91.7%	76.9%
—■— Some College	79.5%	85.8%	86.7%	86.9%	84.3%	93.1%	81.4%
—●— College Degree +	97.1%	94.9%	95.9%	95.0%	94.2%	93.5%	94.4%
- - - US Total Rate*							85.4%

*Source: 2008 CDC BRFSS

Interview Year 1997

		Do you have any kind of health coverage?	
		Yes	No
Total		84.0%	16.0%
Gender	Male	85.9%	14.1%
	Female	82.5%	17.5%
Age	18 - 24	73.6%	26.4%
	25 - 34	76.0%	24.0%
	35 - 44	83.8%	16.2%
	45 - 54	96.0%	4.0%
	55 - 64	89.0%	11.0%
Employed	Yes	86.7%	13.3%
	No	77.0%	23.0%
Income	< \$15K	62.9%	37.1%
	\$15-25K	80.7%	19.3%
	\$25-50K	90.6%	9.4%
	\$50K +	95.8%	4.2%
Education	Less than High School	79.7%	20.3%
	High School Diploma or GED	81.5%	18.5%
	Some College/Technical	79.5%	20.5%
	College Degree or Higher	97.1%	2.9%

Interview Year 1999

		Do you have any kind of health coverage?	
		Yes	No
Total		85.2%	14.8%
Gender	Male	86.6%	13.4%
	Female	83.9%	16.1%
Age	18 - 24	70.1%	29.9%
	25 - 34	83.3%	16.7%
	35 - 44	86.5%	13.5%
	45 - 54	90.8%	9.2%
	55 - 64	89.3%	10.7%
Employed	Yes	86.8%	13.2%
	No	78.6%	21.4%
Income	< \$15K	67.5%	32.5%
	\$15-25K	76.4%	23.6%
	\$25-50K	89.6%	10.4%
	\$50K +	96.3%	3.7%
Education	Less than High School	74.4%	25.6%
	High School Diploma or GED	81.5%	18.5%
	Some College/Technical	85.8%	14.2%
	College Degree or Higher	94.9%	5.1%

Interview Year 2001

		Do you have any kind of health coverage?	
		Yes	No
Total		86.9%	13.1%
Gender	Male	88.0%	12.0%
	Female	85.9%	14.1%
Age	18 - 24	64.3%	35.7%
	25 - 34	83.8%	16.2%
	35 - 44	89.7%	10.3%
	45 - 54	94.2%	5.8%
	55 - 64	88.8%	11.2%
Employed	Yes	88.1%	11.9%
	No	83.4%	16.6%
Income	< \$15K	74.6%	25.4%
	\$15-25K	72.6%	27.4%
	\$25-50K	91.3%	8.7%
	\$50K +	94.0%	6.0%
Education	Less than High School	69.4%	30.6%
	High School Diploma or GED	85.8%	14.2%
	Some College/Technical	86.7%	13.3%
	College Degree or Higher	95.9%	4.1%

Interview Year 2003

		Do you have any kind of health coverage?	
		Yes	No
Total		84.2%	15.8%
Gender	Male	83.7%	16.3%
	Female	84.7%	15.3%
Age	18 - 24	75.0%	25.0%
	25 - 34	77.7%	22.3%
	35 - 44	88.5%	11.5%
	45 - 54	85.5%	14.5%
	55 - 64	91.8%	8.2%
Employed	Yes	88.7%	11.3%
	No	70.2%	29.8%
Income	< \$15K	64.6%	35.4%
	\$15-25K	72.9%	27.1%
	\$25-50K	87.3%	12.7%
	\$50K +	97.9%	2.1%
Education	Less than High School	75.0%	25.0%
	High School Diploma or GED	77.4%	22.6%
	Some College/Technical	86.9%	13.1%
	College Degree or Higher	95.0%	5.0%

Interview Year 2005

		Do you have any kind of health coverage?	
--	--	--	--

		Yes	No
Total		86.6%	13.4%
Gender	Male	84.3%	15.7%
	Female	88.2%	11.8%
Age	18 - 24	75.0%	25.0%
	25 - 34	83.9%	16.1%
	35 - 44	81.7%	18.3%
	45 - 54	93.3%	6.7%
	55 - 64	92.0%	8.0%
Employed	Yes	89.1%	10.9%
	No	79.5%	20.5%
Income	< \$15K	62.2%	37.8%
	\$15-25K	69.6%	30.4%
	\$25-50K	87.8%	12.2%
	\$50K +	97.7%	2.3%
Education	Less than High School	61.9%	38.1%
	High School Diploma or GED	84.5%	15.5%
	Some College/Technical	84.3%	15.7%
	College Degree or Higher	94.2%	5.8%

Interview Year 2007

		Do you have any kind of health coverage?	
		Yes	No
Total		91.2%	8.8%
Gender	Male	90.4%	9.6%
	Female	92.1%	7.9%
Age	18 - 24	77.1%	22.9%
	25 - 34	89.7%	10.3%
	35 - 44	91.5%	8.5%
	45 - 54	92.4%	7.6%
	55 - 64	94.4%	5.6%
Employed	Yes	92.4%	7.6%
	No	87.0%	13.0%
Income	< \$15K	73.2%	26.8%
	\$15-25K	73.5%	26.5%
	\$25-50K	94.7%	5.3%
	\$50K +	97.4%	2.6%
Education	Less than High School	67.6%	32.4%
	High School Diploma or GED	91.7%	8.3%
	Some College/Technical	93.1%	6.9%
	College Degree or Higher	93.5%	6.5%

Interview Year 2009

		Do you have any kind of health coverage?	
		Yes	No

Total		81.2%	18.8%
Gender	Male	79.1%	20.9%
	Female	83.5%	16.5%
Age	18 - 24	54.9%	45.1%
	25 - 34	76.6%	23.4%
	35 - 44	89.2%	10.8%
	45 - 54	86.2%	13.8%
	55 - 64	93.2%	6.8%
Employed	Yes	82.0%	18.0%
	No	79.4%	20.6%
Income	< \$15K	51.2%	48.8%
	\$15-25K	68.9%	31.1%
	\$25-50K	94.1%	5.9%
	\$50K +	97.3%	2.7%
Education	Less than High School	73.7%	26.3%
	High School Diploma or GED	76.9%	23.1%
	Some College/Technical	81.4%	18.6%
	College Degree or Higher	94.4%	5.6%