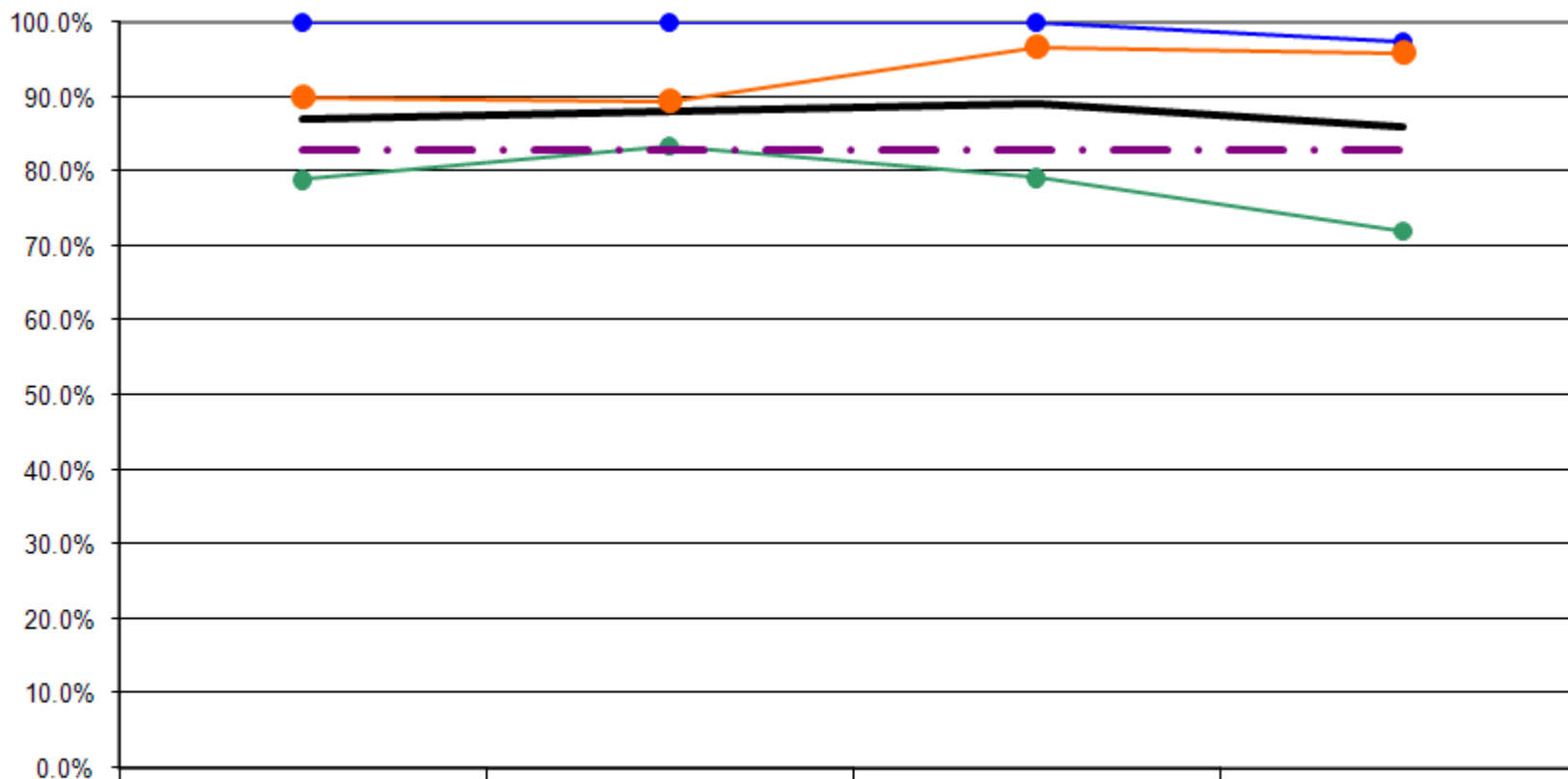


Ages: 18-64 Survey Population Have you had a pap smear within the past 3 years?

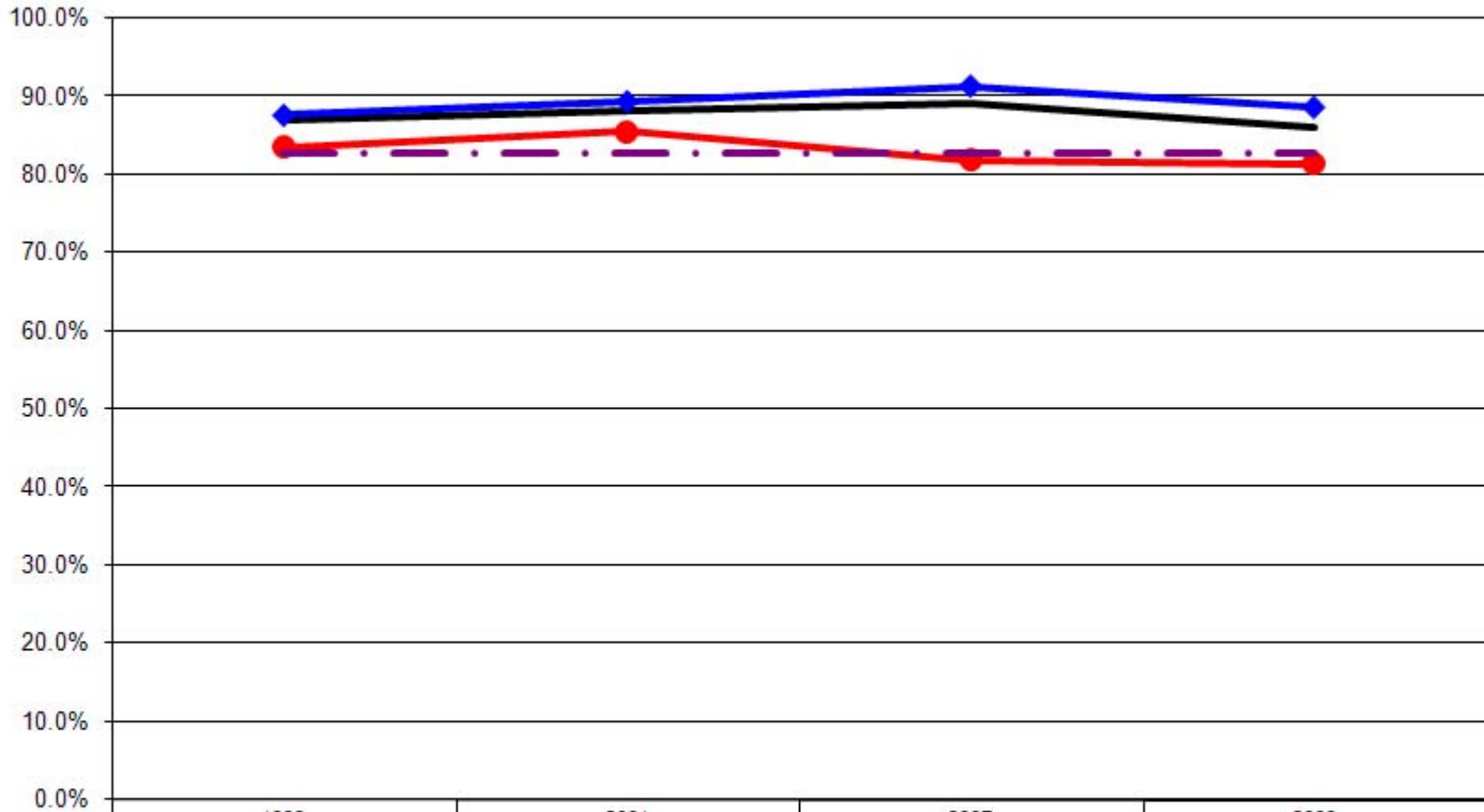
Had Pap Smear Within Past 3 Years By Age (Ages: 18-64)



	1999	2001	2007	2009
— Total	87.0%	88.2%	89.1%	86.0%
—● 18-24	100.0%	100.0%	100.0%	97.4%
—● 25-44	89.8%	89.4%	96.7%	95.9%
—● 45-64	78.8%	83.3%	79.1%	72.0%
- - - US Total Rate*				82.8%

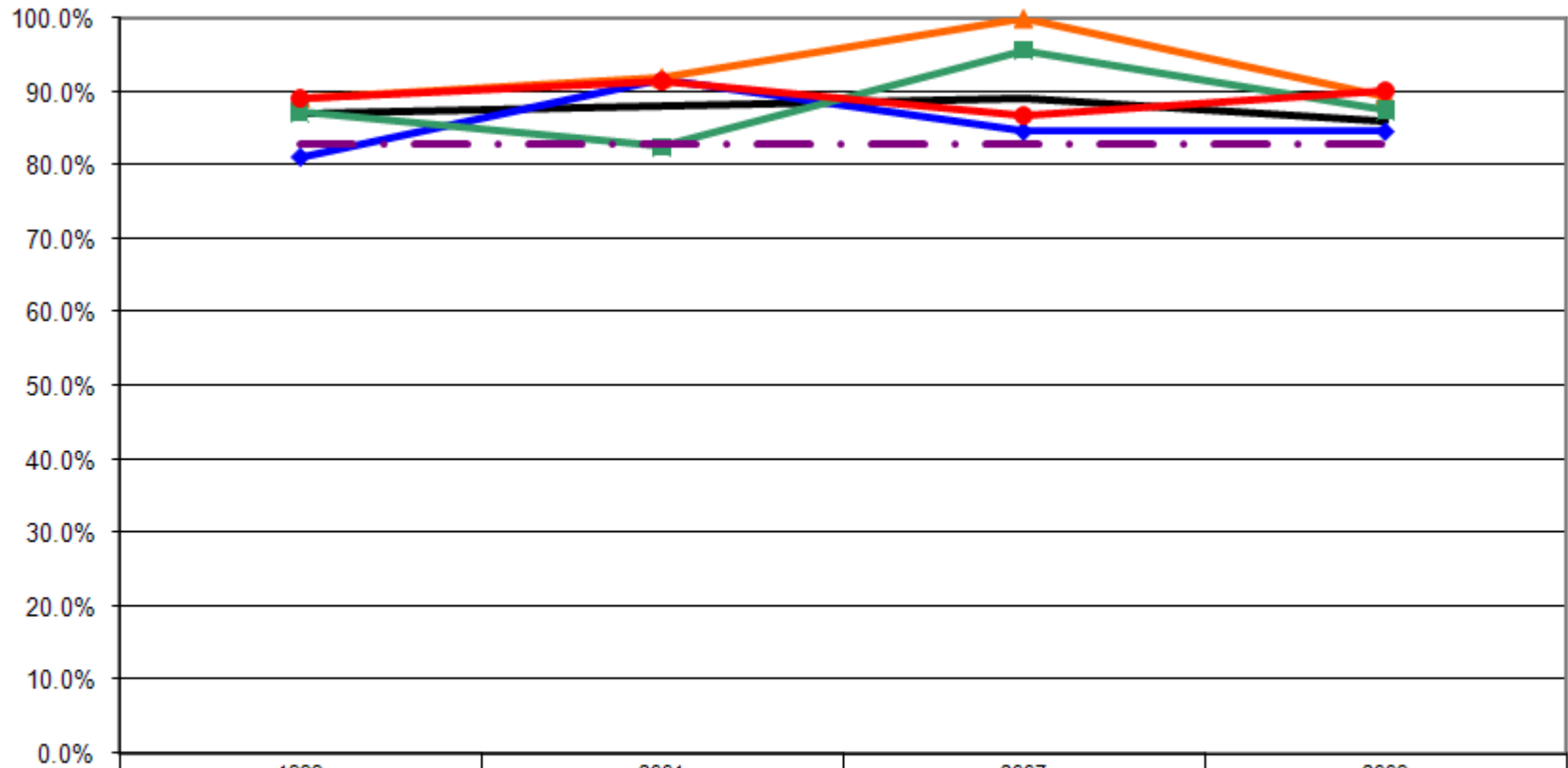
*Source: 2008 CDC BRFSS

Had Pap Smear Within Past 3 Years By Employment Status (Ages: 18-64)



*Source: 2008 CDC BRFSS

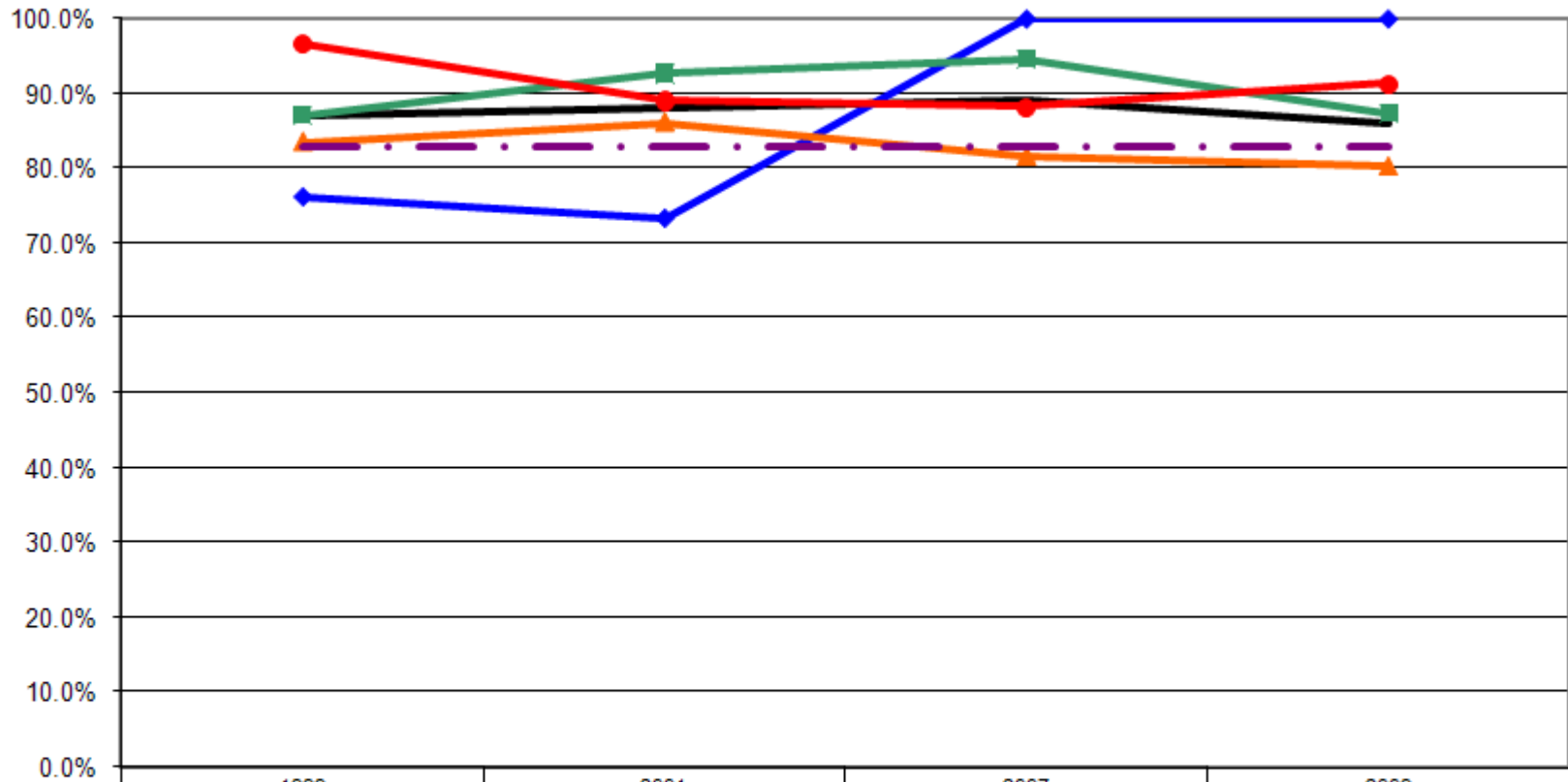
Had Pap Smear Within Past 3 Years By Income (Ages: 18-64)



	1999	2001	2007	2009
— Total	87.0%	88.2%	89.1%	86.0%
—◆— <\$15K	81.1%	91.7%	84.6%	84.6%
—▲— \$15-25K	89.1%	91.9%	100.0%	89.5%
—■— \$25-50K	87.2%	82.5%	95.7%	87.5%
—●— \$50K+	89.1%	91.5%	86.8%	90.3%
- - - US Total Rate*				82.8%

*Source: 2008 CDC BRFSS

Had Pap Smear Within Past 3 Years By Education
(Ages: 18-64)



	1999	2001	2007	2009
— Total	87.0%	88.2%	89.1%	86.0%
—◆— <HS	76.2%	73.3%	100.0%	100.0%
—▲— HS or GED	83.5%	86.1%	81.6%	80.2%
—■— Some College	87.1%	92.7%	94.6%	87.2%
—●— College Degree +	96.6%	89.1%	88.2%	91.3%
- - - US Total Rate*				82.8%

*Source: 2008 CDC BRFSS

Interview Year 1999

		Pap smear within the past 3 years	
		Yes	No
Total		87.0%	13.0%
Age	18 - 24	100.0%	0.0%
	25 - 34	94.9%	5.1%
	35 - 44	85.5%	14.5%
	45 - 54	87.5%	12.5%
	55 - 64	68.8%	31.3%
Employed	Yes	87.6%	12.4%
	No	83.6%	16.4%
Income	< \$15K	81.1%	18.9%
	\$15-25K	89.1%	10.9%
	\$25-50K	87.2%	12.8%
	\$50K +	89.1%	10.9%
Education	Less than High School	76.2%	23.8%
	High School Diploma or GED	83.5%	16.5%
	Some College/Technical	87.1%	12.9%
	College Degree or Higher	96.6%	3.4%

Interview Year 2001

		Pap smear within the past 3 years	
		Yes	No
Total		88.2%	11.8%
Age	18 - 24	100.0%	0.0%
	25 - 34	92.2%	7.8%
	35 - 44	87.7%	12.3%
	45 - 54	85.5%	14.5%
	55 - 64	80.0%	20.0%
Employed	Yes	89.4%	10.6%
	No	85.5%	14.5%
Income	< \$15K	91.7%	8.3%
	\$15-25K	91.9%	8.1%
	\$25-50K	82.5%	17.5%
	\$50K +	91.5%	8.5%
Education	Less than High School	73.3%	26.7%
	High School Diploma or GED	86.1%	13.9%
	Some College/Technical	92.7%	7.3%
	College Degree or Higher	89.1%	10.9%

Interview Year 2007

		Pap smear within the past 3 years	
		Yes	No
Total		89.1%	10.9%
Age	18 - 24	100.0%	0.0%
	25 - 34	96.6%	3.4%
	35 - 44	96.8%	3.2%
	45 - 54	82.8%	17.2%
	55 - 64	73.9%	26.1%
Employed	Yes	91.4%	8.6%
	No	81.8%	18.2%
Income	< \$15K	84.6%	15.4%
	\$15-25K	100.0%	0.0%
	\$25-50K	95.7%	4.3%
	\$50K +	86.8%	13.2%
Education	Less than High School	100.0%	0.0%
	High School Diploma or GED	81.6%	18.4%
	Some College/Technical	94.6%	5.4%
	College Degree or Higher	88.2%	11.8%

Interview Year 2009

		Pap smear within the past 3 years	
		Yes	No
Total		86.0%	14.0%
Age	18 - 24	97.4%	2.6%
	25 - 34	98.3%	1.7%
	35 - 44	92.3%	7.7%
	45 - 54	68.5%	31.5%
	55 - 64	76.1%	23.9%
Employed	Yes	88.7%	11.3%
	No	81.4%	18.6%
Income	< \$15K	84.6%	15.4%
	\$15-25K	89.5%	10.5%
	\$25-50K	87.5%	12.5%
	\$50K +	90.3%	9.7%
Education	Less than High School	100.0%	0.0%
	High School Diploma or GED	80.2%	19.8%
	Some College/Technical	87.2%	12.8%
	College Degree or Higher	91.3%	8.7%