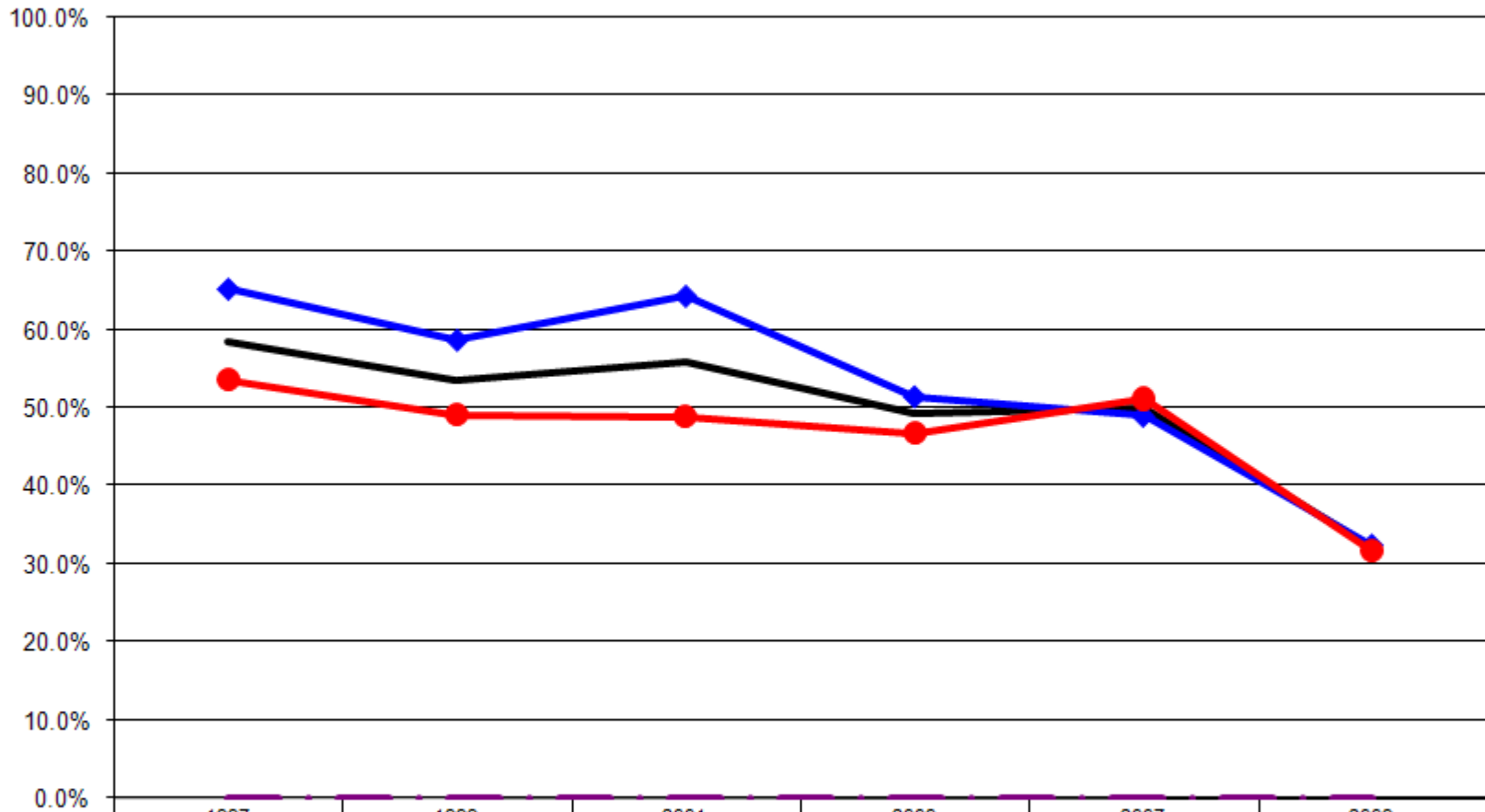


Ages: 18-64 Survey Population

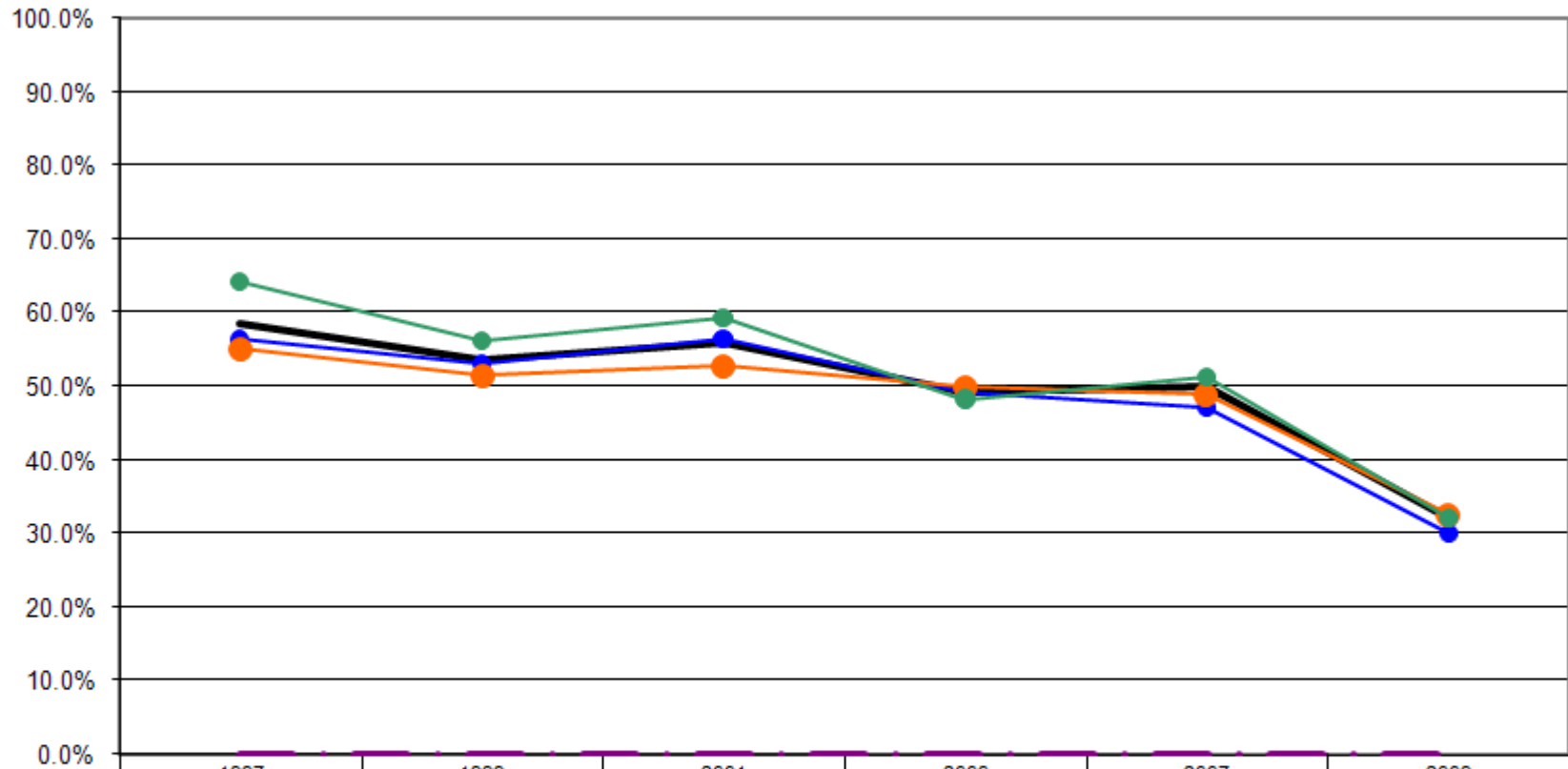
During the past 30 days, for about how many days have you felt very healthy and full of energy?

Felt Very Healthy & Full of Energy 15+ Days By Gender
(Ages: 18-64)



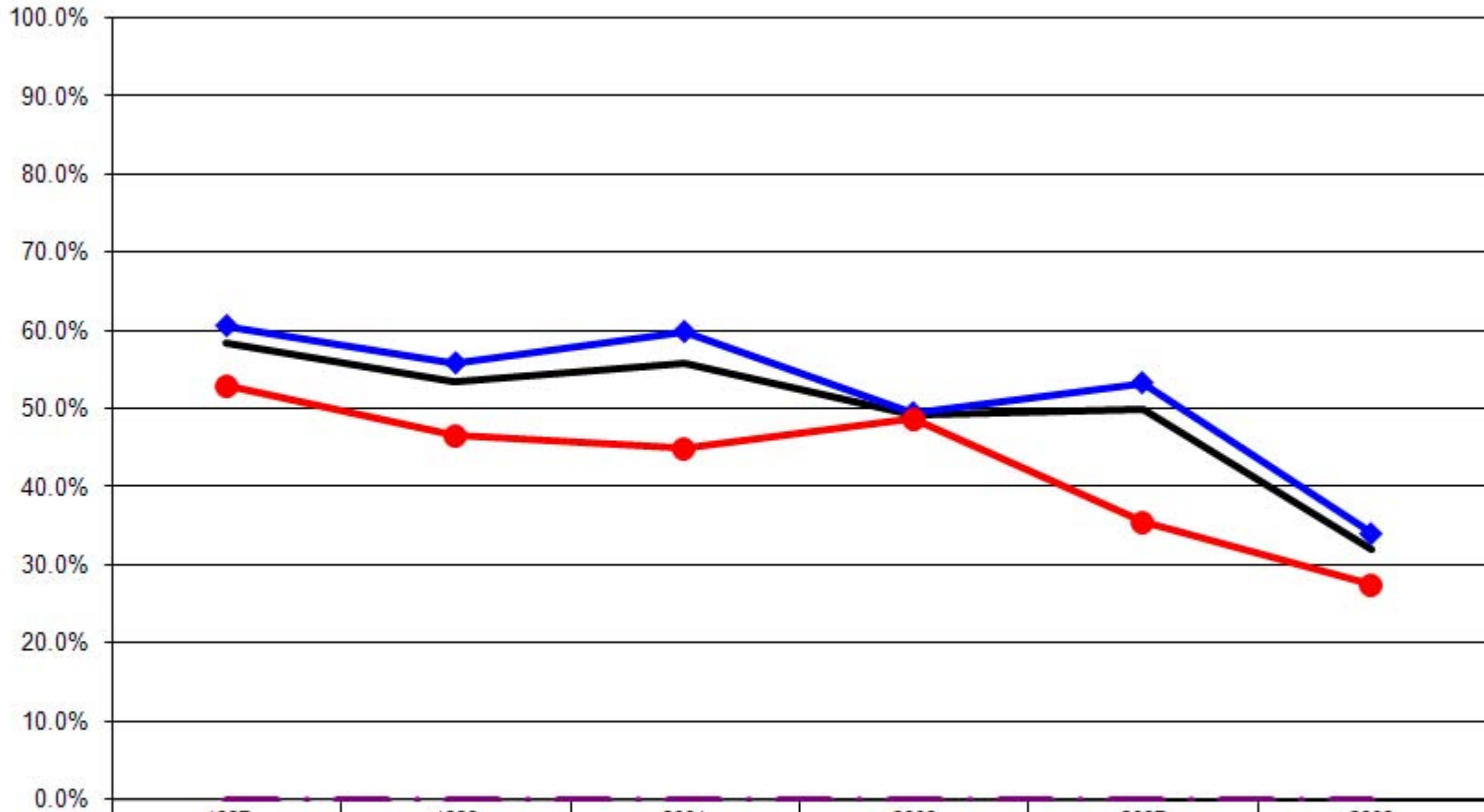
	1997	1999	2001	2003	2007	2009
— Total	58.6%	53.6%	56.0%	49.2%	50.0%	32.0%
—◆ Male	65.2%	58.7%	64.3%	51.4%	48.9%	32.4%
—● Female	53.6%	49.1%	48.9%	46.7%	51.1%	31.7%
- - - - US Total Rate*						

Felt Very Healthy & Full of Energy 15+ Days By Age
(Ages: 18-64)



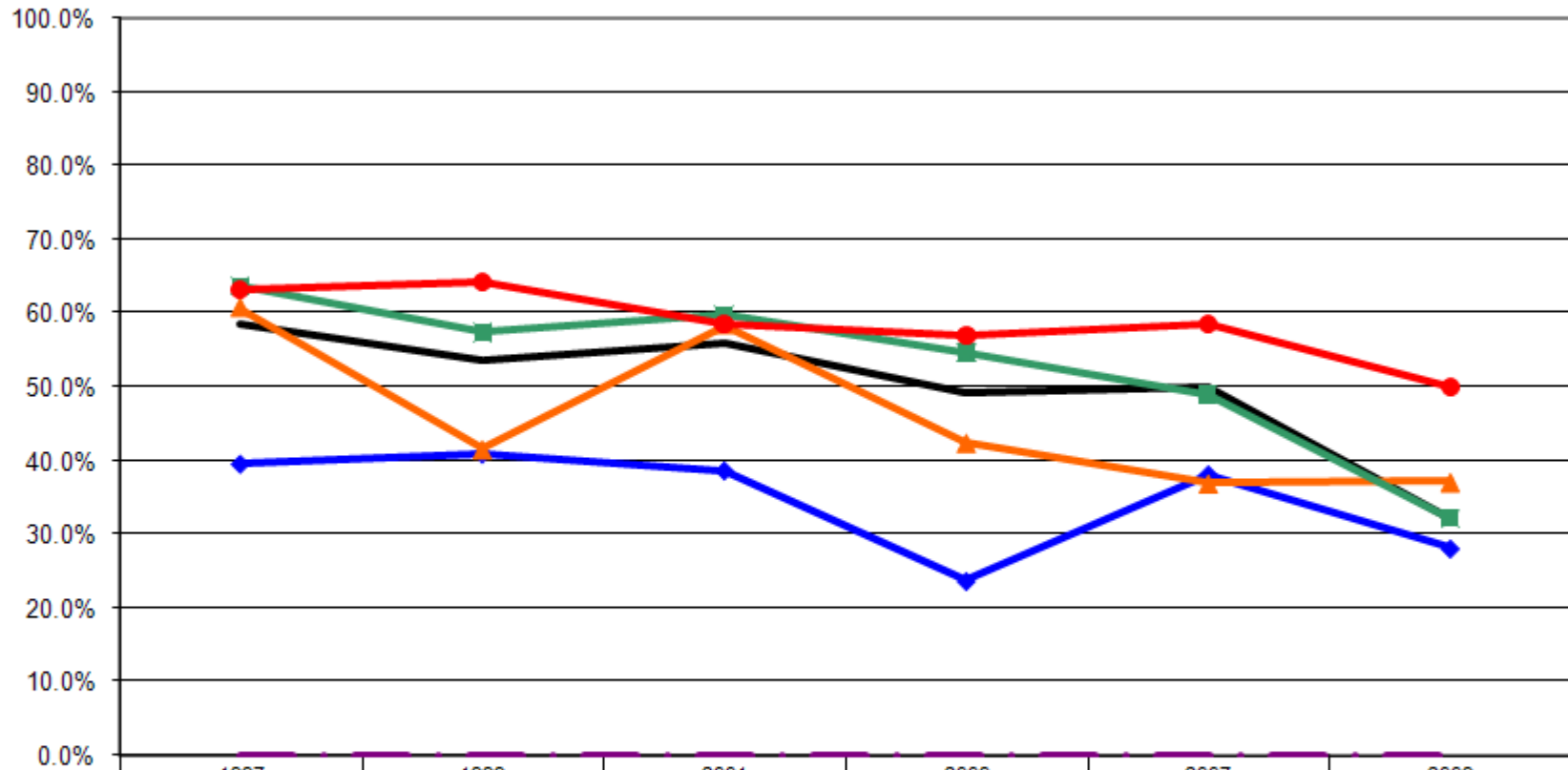
	1997	1999	2001	2003	2007	2009
— Total	58.6%	53.6%	56.0%	49.2%	50.0%	32.0%
—● 18-24	56.3%	53.0%	56.4%	49.2%	47.1%	30.0%
—● 25-44	55.2%	51.6%	52.9%	50.0%	49.0%	32.6%
—● 45-64	64.2%	56.2%	59.3%	48.3%	51.3%	32.2%
- - - US Total Rate*						

Felt Very Healthy & Full of Energy 15+ Days By Employment Status
(Ages: 18-64)



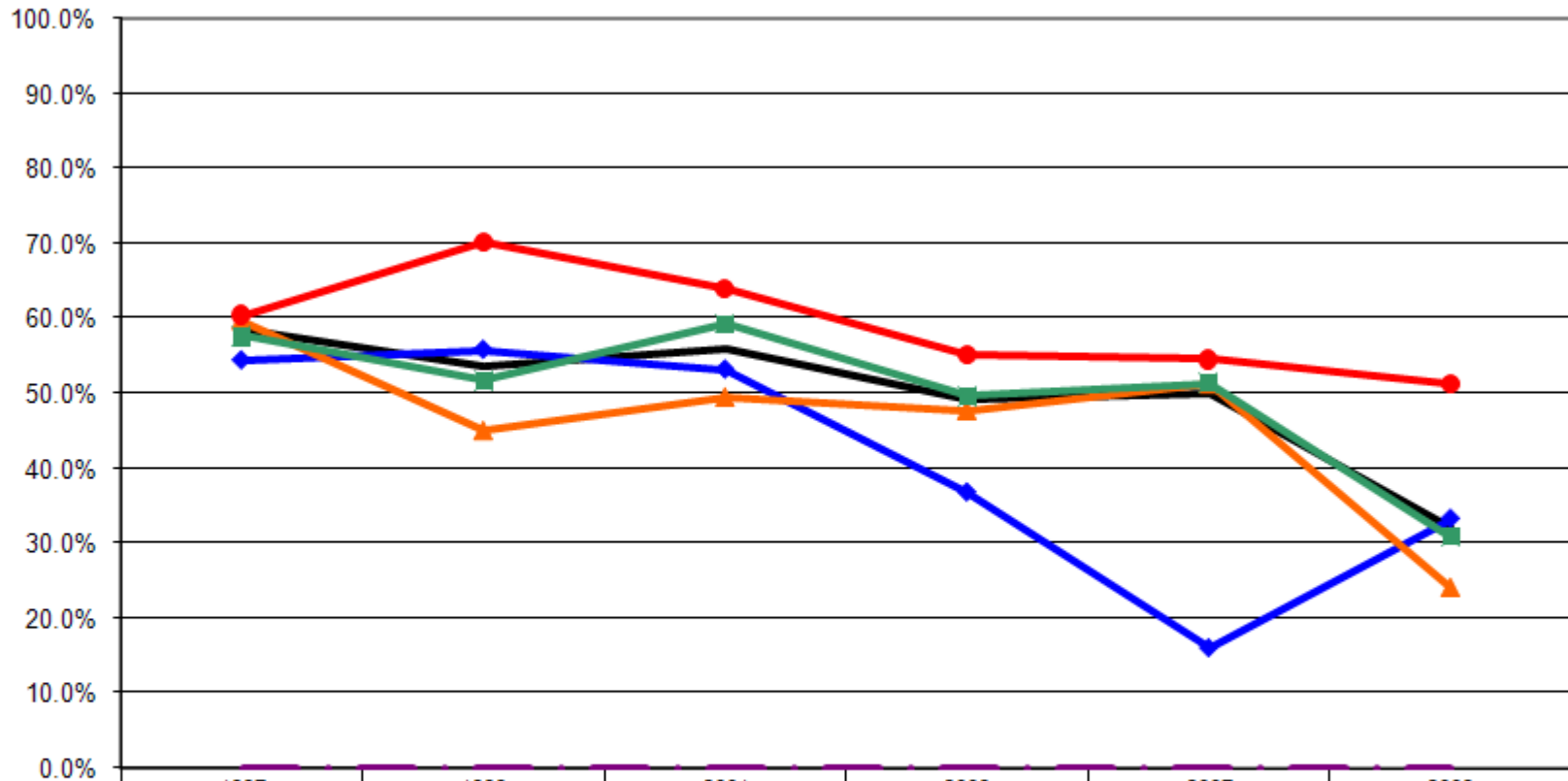
	1997	1999	2001	2003	2007	2009
— Total	58.6%	53.6%	56.0%	49.2%	50.0%	32.0%
—◆— Employed	60.7%	55.9%	59.9%	49.6%	53.4%	34.1%
—●— Not Employed	53.0%	46.6%	44.9%	48.7%	35.6%	27.5%
- - - - US Total Rate*						

Felt Very Healthy & Full of Energy 15+ Days By Income (Ages: 18-64)



	1997	1999	2001	2003	2007	2009
— Total	58.6%	53.6%	56.0%	49.2%	50.0%	32.0%
—◆— <\$15K	39.6%	41.0%	38.7%	23.7%	38.2%	28.1%
—▲— \$15-25K	60.7%	41.6%	58.4%	42.4%	37.0%	37.1%
—■— \$25-50K	63.6%	57.4%	59.7%	54.7%	48.9%	32.2%
—●— \$50K+	63.2%	64.2%	58.5%	57.0%	58.6%	50.0%
- - - US Total Rate*						0.0%

Felt Very Healthy & Full of Energy 15+ Days By Education
(Ages: 18-64)



	1997	1999	2001	2003	2007	2009
Total	58.6%	53.6%	56.0%	49.2%	50.0%	32.0%
<HS	54.4%	55.8%	53.2%	36.8%	16.1%	33.3%
HS or GED	59.7%	45.0%	49.5%	47.7%	51.3%	24.2%
Some College	57.6%	51.6%	59.2%	49.6%	51.4%	30.9%
College Degree +	60.4%	70.1%	63.9%	55.2%	54.5%	51.3%
US Total Rate*	0.0%	0.0%	0.0%	0.0%	0.0%	0.0%

Interview Year 1997

		During the past 30 days, for about how many days have you felt very healthy and full of energy?					
		None	1 to 3 days	4 to 6 days	7 to 10 days	11 to 15 days	More than 15 days
Total		10.3%	5.2%	5.8%	8.7%	11.5%	58.6%
Gender	Male	6.8%	2.9%	7.7%	7.2%	10.1%	65.2%
	Female	12.9%	6.8%	4.3%	9.7%	12.6%	53.6%
Age	18 - 24	2.1%	8.3%	8.3%	12.5%	12.5%	56.3%
	25 - 34	10.9%	7.0%	4.7%	9.4%	13.3%	54.7%
	35 - 44	10.5%	3.0%	8.3%	12.0%	10.5%	55.6%
	45 - 54	10.5%	6.3%	6.3%	5.3%	12.6%	58.9%
	55 - 64	13.6%	2.5%	1.2%	3.7%	8.6%	70.4%
	65+	0.0%	0.0%	0.0%	0.0%	0.0%	0.0%
Employed	Yes	6.6%	4.8%	6.0%	8.5%	13.4%	60.7%
	No	20.1%	6.0%	5.2%	9.0%	6.7%	53.0%
Income	< \$15K	22.8%	7.9%	5.0%	9.9%	14.9%	39.6%
	\$15-25K	10.7%	4.8%	6.0%	8.3%	9.5%	60.7%
	\$25-50K	8.0%	4.5%	4.5%	9.1%	10.2%	63.6%
	\$50K +	2.1%	5.3%	8.4%	5.3%	15.8%	63.2%
Education	Less than High School	11.8%	8.8%	5.9%	13.2%	5.9%	54.4%
	High School Diploma or GED	15.7%	5.2%	4.2%	6.8%	8.4%	59.7%
	Some College/Technical	7.2%	3.2%	7.2%	9.6%	15.2%	57.6%
	College Degree or Higher	3.0%	5.0%	6.9%	7.9%	16.8%	60.4%

Interview Year 1999

		During the past 30 days, for about how many days have you felt very healthy and full of energy?					
		None	1 to 3 days	4 to 6 days	7 to 10 days	11 to 15 days	More than 15 days
Total		8.5%	6.4%	5.8%	8.7%	16.9%	53.6%
Gender	Male	7.4%	6.2%	4.1%	7.0%	16.5%	58.7%
	Female	9.5%	6.6%	7.3%	10.3%	17.2%	49.1%
Age	18 - 24	6.1%	0.0%	9.1%	15.2%	16.7%	53.0%
	25 - 34	3.7%	5.6%	6.5%	8.3%	23.1%	52.8%
	35 - 44	10.7%	7.9%	2.9%	11.4%	16.4%	50.7%
	45 - 54	12.8%	7.7%	6.0%	5.1%	13.7%	54.7%
	55 - 64	7.1%	8.3%	7.1%	4.8%	14.3%	58.3%
	65+	0.0%	0.0%	0.0%	0.0%	0.0%	0.0%
Employed	Yes	7.1%	5.8%	6.1%	8.6%	16.5%	55.9%
	No	15.5%	8.7%	4.9%	8.7%	15.5%	46.6%
Income	< \$15K	13.3%	15.7%	6.0%	8.4%	15.7%	41.0%
	\$15-25K	10.1%	9.0%	9.0%	9.0%	21.3%	41.6%
	\$25-50K	8.4%	1.6%	6.3%	8.4%	17.9%	57.4%
	\$50K +	5.5%	5.5%	3.7%	8.3%	12.8%	64.2%
Education	Less than High School	11.6%	11.6%	2.3%	4.7%	14.0%	55.8%
	High School Diploma or GED	10.9%	6.9%	9.4%	7.9%	19.8%	45.0%
	Some College/Technical	10.5%	3.9%	5.2%	11.1%	17.6%	51.6%
	College Degree or Higher	0.9%	6.8%	1.7%	8.5%	12.0%	70.1%

Interview Year 2001

		During the past 30 days, for about how many days have you felt very healthy and full of energy?					
		None	1 to 3 days	4 to 6 days	7 to 10 days	11 to 15 days	More than 15 days
Total		10.2%	3.8%	6.1%	9.6%	14.2%	56.0%
Gender	Male	7.9%	2.9%	5.0%	7.5%	12.4%	64.3%
	Female	12.1%	4.6%	7.1%	11.4%	15.7%	48.9%
Age	18 - 24	5.5%	5.5%	0.0%	14.5%	18.2%	56.4%
	25 - 34	4.0%	7.9%	7.9%	7.9%	18.8%	53.5%
	35 - 44	11.5%	2.2%	7.9%	14.4%	11.5%	52.5%
	45 - 54	11.3%	3.0%	6.8%	9.0%	14.3%	55.6%
	55 - 64	16.1%	2.2%	4.3%	2.2%	10.8%	64.5%
	65+	0.0%	0.0%	0.0%	0.0%	0.0%	0.0%
Employed	Yes	6.0%	3.7%	6.0%	9.2%	15.2%	59.9%
	No	21.7%	4.3%	6.5%	10.9%	11.6%	44.9%
Income	< \$15K	25.8%	4.8%	6.5%	12.9%	11.3%	38.7%
	\$15-25K	9.1%	6.5%	6.5%	10.4%	9.1%	58.4%
	\$25-50K	8.5%	2.5%	5.5%	10.9%	12.9%	59.7%
	\$50K +	5.4%	2.3%	6.9%	8.5%	18.5%	58.5%
Education	Less than High School	17.0%	2.1%	2.1%	6.4%	19.1%	53.2%
	High School Diploma or GED	14.1%	5.6%	6.1%	11.1%	13.6%	49.5%
	Some College/Technical	7.6%	2.5%	7.6%	10.8%	12.1%	59.2%
	College Degree or Higher	4.2%	3.4%	5.9%	6.7%	16.0%	63.9%

Interview Year 2003

		During the past 30 days, for about how many days have you felt very healthy and full of energy?					
		None	1 to 3 days	4 to 6 days	7 to 10 days	11 to 15 days	More than 15 days
Total		16.7%	5.4%	5.4%	11.1%	12.1%	49.2%
Gender	Male	17.0%	7.3%	5.3%	7.7%	11.3%	51.4%
	Female	16.4%	3.3%	5.6%	15.0%	13.1%	46.7%
Age	18 - 24	11.1%	11.1%	4.8%	11.1%	12.7%	49.2%
	25 - 34	12.9%	3.0%	5.9%	9.9%	16.8%	51.5%
	35 - 44	12.4%	5.0%	3.3%	12.4%	18.2%	48.8%
	45 - 54	22.7%	7.2%	8.2%	13.4%	4.1%	44.3%
	55 - 64	25.3%	2.5%	5.1%	7.6%	6.3%	53.2%
	65+	0.0%	0.0%	0.0%	0.0%	0.0%	0.0%
Employed	Yes	12.2%	5.8%	5.8%	12.2%	14.3%	49.6%
	No	30.1%	4.4%	3.5%	7.1%	6.2%	48.7%
Income	< \$15K	39.0%	15.3%	1.7%	8.5%	11.9%	23.7%
	\$15-25K	21.2%	1.5%	9.1%	13.6%	12.1%	42.4%
	\$25-50K	14.0%	4.7%	3.3%	12.0%	11.3%	54.7%
	\$50K +	8.9%	3.0%	5.2%	11.9%	14.1%	57.0%
Education	Less than High School	42.1%	5.3%	10.5%	2.6%	2.6%	36.8%
	High School Diploma or GED	17.2%	5.7%	5.2%	9.8%	14.4%	47.7%
	Some College/Technical	18.0%	4.5%	6.8%	11.3%	9.8%	49.6%
	College Degree or Higher	6.0%	6.0%	2.6%	15.5%	14.7%	55.2%

Interview Year 2007

		During the past 30 days, for about how many days have you felt very healthy and full of energy?					
		None	1 to 3 days	4 to 6 days	7 to 10 days	11 to 15 days	More than 15 days
Total		12.0%	3.1%	4.9%	12.0%	17.9%	50.0%
Gender	Male	14.2%	2.8%	3.2%	11.3%	19.5%	48.9%
	Female	9.8%	3.4%	6.8%	12.8%	16.2%	51.1%
Age	18 - 24	5.9%	2.9%	2.9%	17.6%	23.5%	47.1%
	25 - 34	11.2%	6.9%	4.3%	12.1%	16.4%	49.1%
	35 - 44	9.8%	1.6%	7.3%	12.2%	20.3%	48.8%
	45 - 54	11.3%	2.1%	3.5%	13.5%	19.9%	49.6%
	55 - 64	17.2%	2.2%	5.2%	9.0%	13.4%	53.0%
	65+	0.0%	0.0%	0.0%	0.0%	0.0%	0.0%
Employed	Yes	8.6%	2.0%	4.1%	12.5%	19.3%	53.4%
	No	25.7%	6.9%	8.9%	9.9%	12.9%	35.6%
Income	< \$15K	21.8%	1.8%	7.3%	14.5%	16.4%	38.2%
	\$15-25K	19.6%	6.5%	2.2%	10.9%	23.9%	37.0%
	\$25-50K	11.3%	3.8%	5.4%	12.9%	17.7%	48.9%
	\$50K +	5.4%	1.6%	3.8%	11.8%	18.8%	58.6%
Education	Less than High School	45.2%	3.2%	0.0%	22.6%	12.9%	16.1%
	High School Diploma or GED	13.7%	1.5%	4.1%	12.7%	16.8%	51.3%
	Some College/Technical	8.6%	4.9%	5.9%	9.2%	20.0%	51.4%
	College Degree or Higher	6.7%	3.0%	6.0%	12.7%	17.2%	54.5%

Interview Year 2009

		During the past 30 days, for about how many days have you felt very healthy and full of energy?					
		None	1 to 3 days	4 to 6 days	7 to 10 days	11 to 15 days	More than 15 days
Total		23.9%	1.6%	9.7%	14.4%	18.3%	32.0%
Gender	Male	23.2%	2.9%	11.1%	13.0%	17.4%	32.4%
	Female	24.6%	0.4%	8.5%	15.6%	19.2%	31.7%
Age	18 - 24	12.9%	0.0%	11.4%	22.9%	22.9%	30.0%
	25 - 34	23.7%	0.0%	14.0%	12.9%	16.1%	33.3%
	35 - 44	20.9%	5.5%	7.7%	11.0%	23.1%	31.9%
	45 - 54	23.6%	2.2%	10.1%	13.5%	19.1%	31.5%
	55 - 64	36.4%	0.0%	5.7%	13.6%	11.4%	33.0%
	65+	0.0%	0.0%	0.0%	0.0%	0.0%	0.0%
Employed	Yes	19.1%	2.0%	9.6%	14.7%	20.5%	34.1%
	No	34.1%	0.7%	10.1%	13.8%	13.8%	27.5%
Income	< \$15K	25.0%	3.1%	12.5%	18.8%	12.5%	28.1%
	\$15-25K	34.3%	0.0%	5.7%	11.4%	11.4%	37.1%
	\$25-50K	22.0%	2.5%	5.9%	14.4%	22.9%	32.2%
	\$50K +	20.6%	2.9%	2.9%	5.9%	17.6%	50.0%
Education	Less than High School	53.3%	0.0%	0.0%	0.0%	13.3%	33.3%
	High School Diploma or GED	24.7%	2.7%	14.5%	18.8%	15.1%	24.2%
	Some College/Technical	22.1%	0.7%	8.7%	15.4%	22.1%	30.9%
	College Degree or Higher	20.0%	1.3%	2.5%	5.0%	20.0%	51.3%