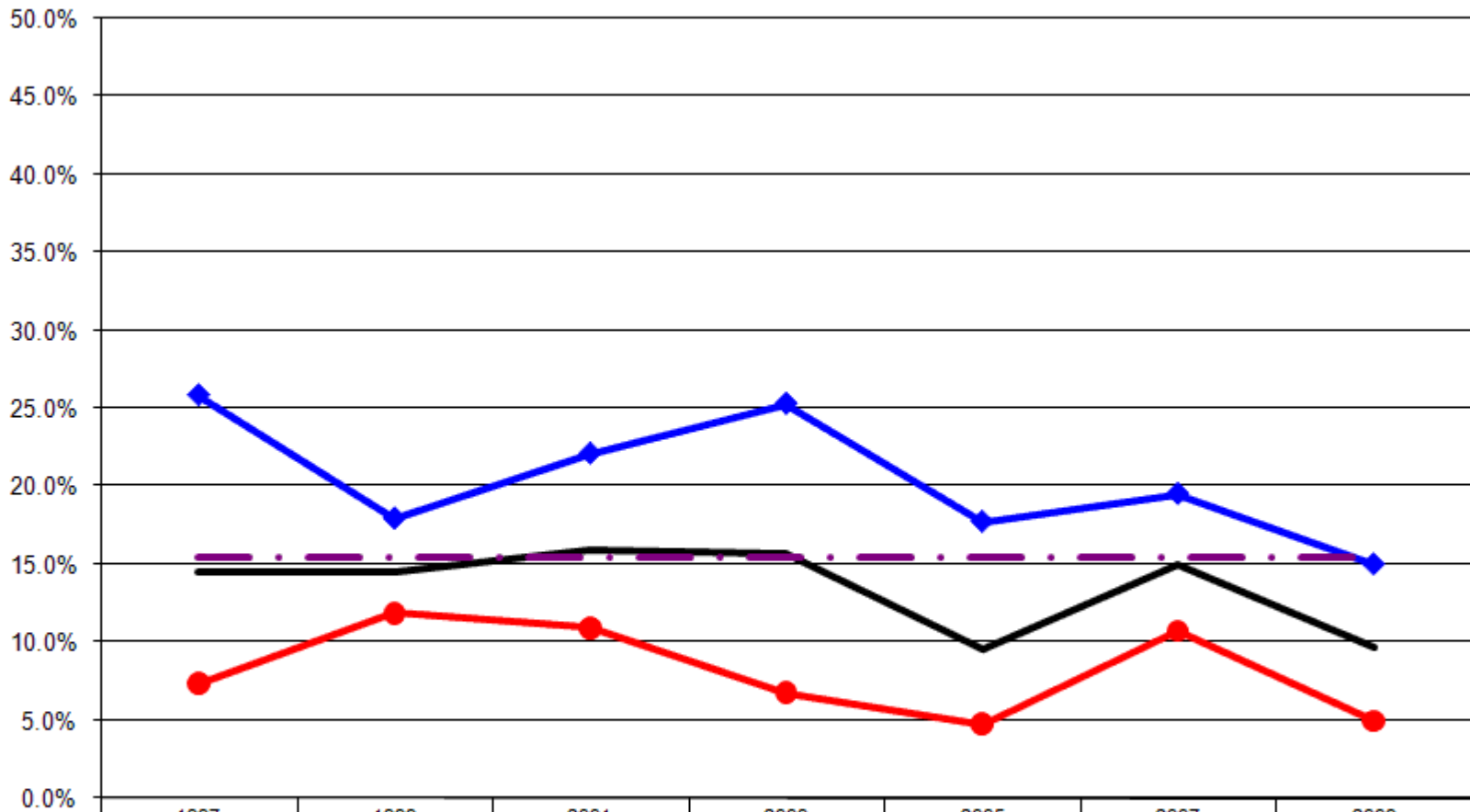


# 12 Year Review Binge Drinking

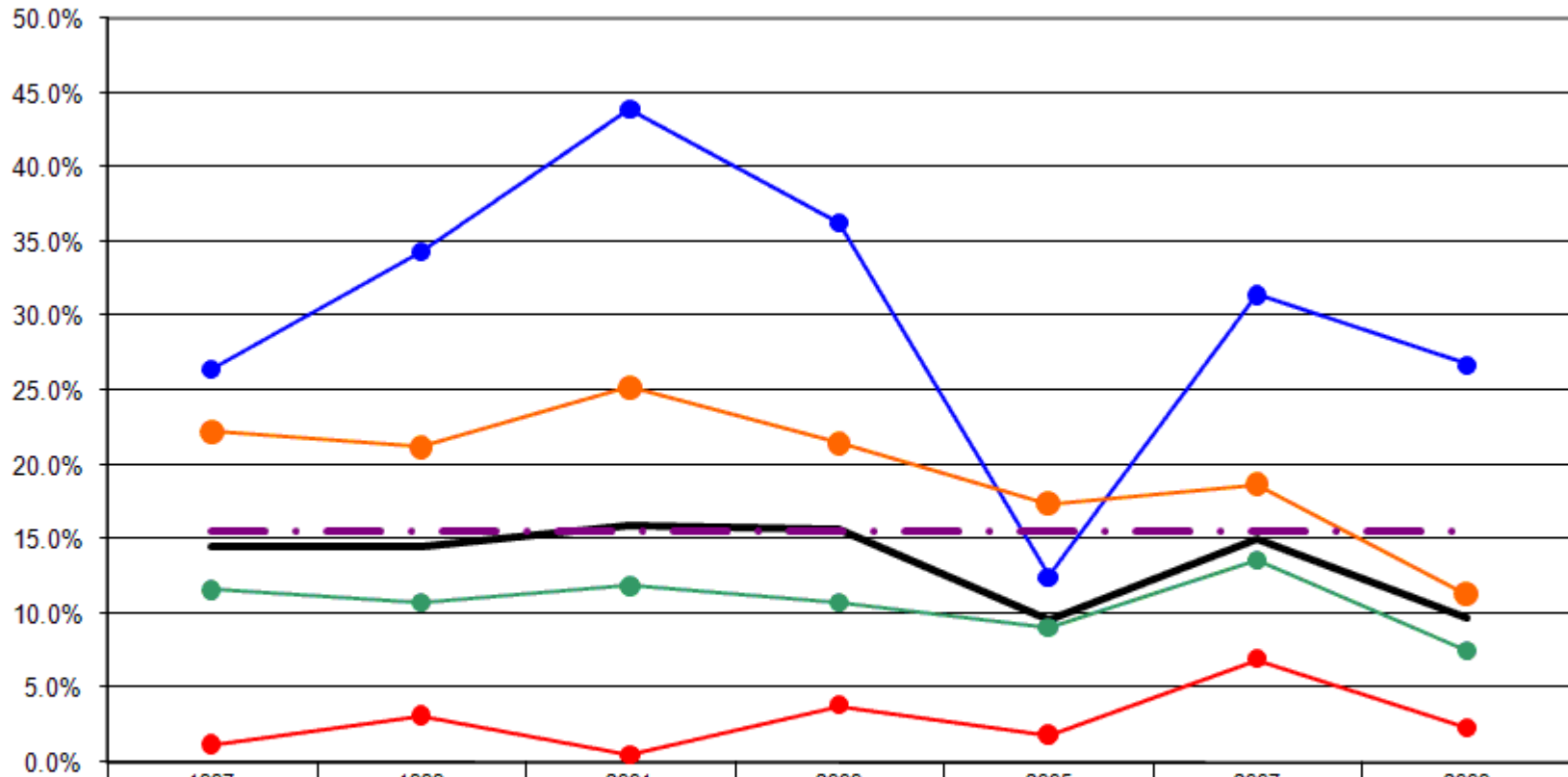
## Binge Drinking Rate By Gender



— Total	14.5%	14.5%	15.9%	15.7%	9.6%	15.0%	9.7%
—◆ Male	25.9%	17.9%	22.1%	25.3%	17.7%	19.5%	15.0%
—● Female	7.3%	11.9%	10.9%	6.7%	4.7%	10.7%	4.9%
- - - US Total Rate*							15.5%

\*Source: 2008 CDC BRFSS

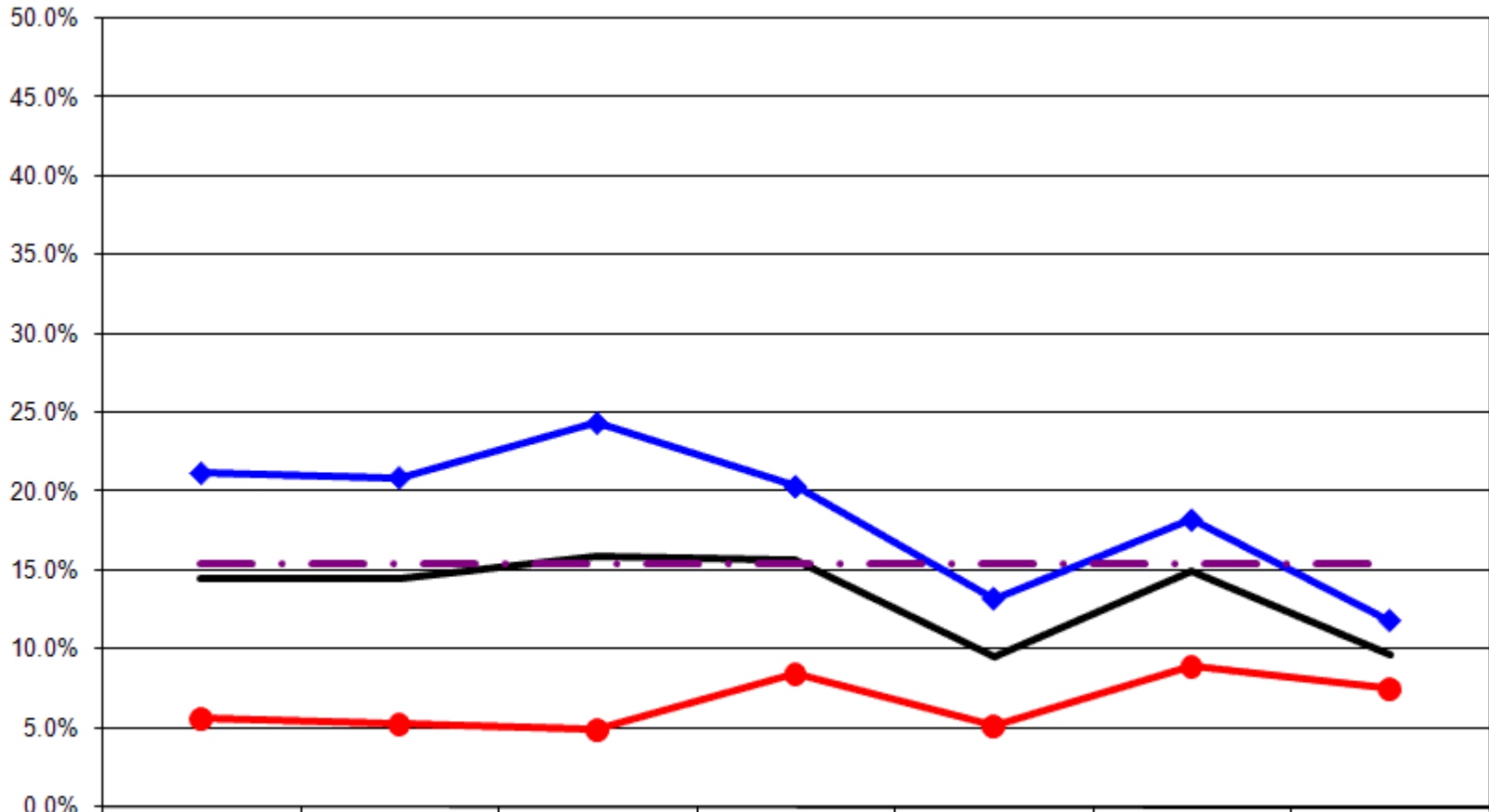
### Binge Drinking Rate By Age



	1997	1999	2001	2003	2005	2007	2009
18-24	26.4%	34.3%	43.9%	36.2%	12.5%	31.4%	26.7%
25-44	22.3%	21.2%	25.2%	21.5%	17.4%	18.7%	11.3%
Total	14.5%	14.5%	15.9%	15.7%	9.6%	15.0%	9.7%
45-64	11.6%	10.8%	11.9%	10.8%	9.1%	13.6%	7.5%
65+	1.2%	3.1%	0.5%	3.8%	1.8%	6.9%	2.3%
US Total Rate*							15.5%

\*Source: 2008 CDC BRFSS

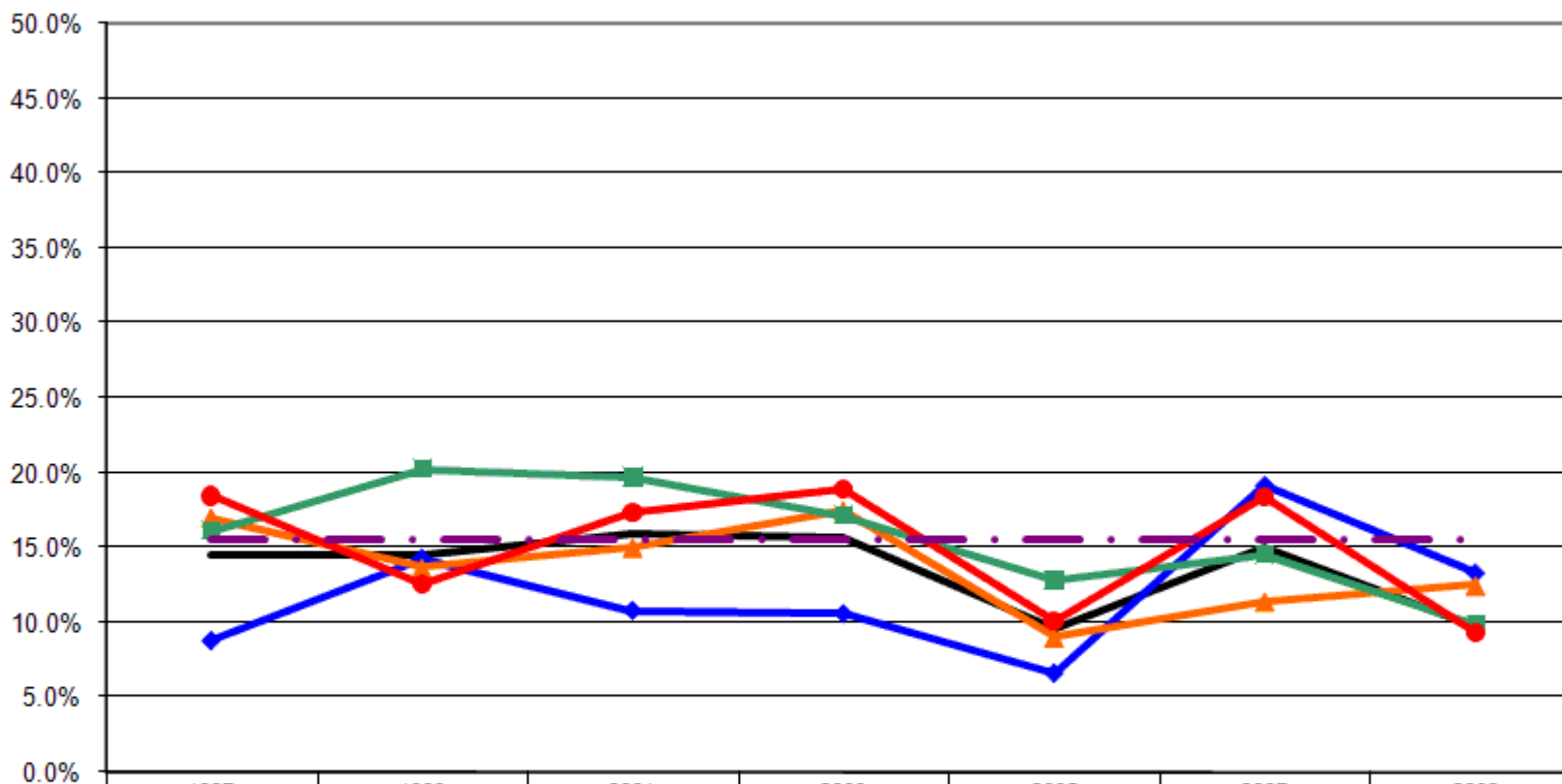
### Binge Drinking Rate By Employment Status



	1997	1999	2001	2003	2005	2007	2009
— Total	14.5%	14.5%	15.9%	15.7%	9.6%	15.0%	9.7%
—◆— Employed	21.2%	20.9%	24.4%	20.4%	13.2%	18.2%	11.8%
—●— Not Employed	5.6%	5.3%	4.9%	8.5%	5.1%	8.9%	7.5%
- - - US Total Rate*							15.5%

\*Source: 2008 CDC BRFSS

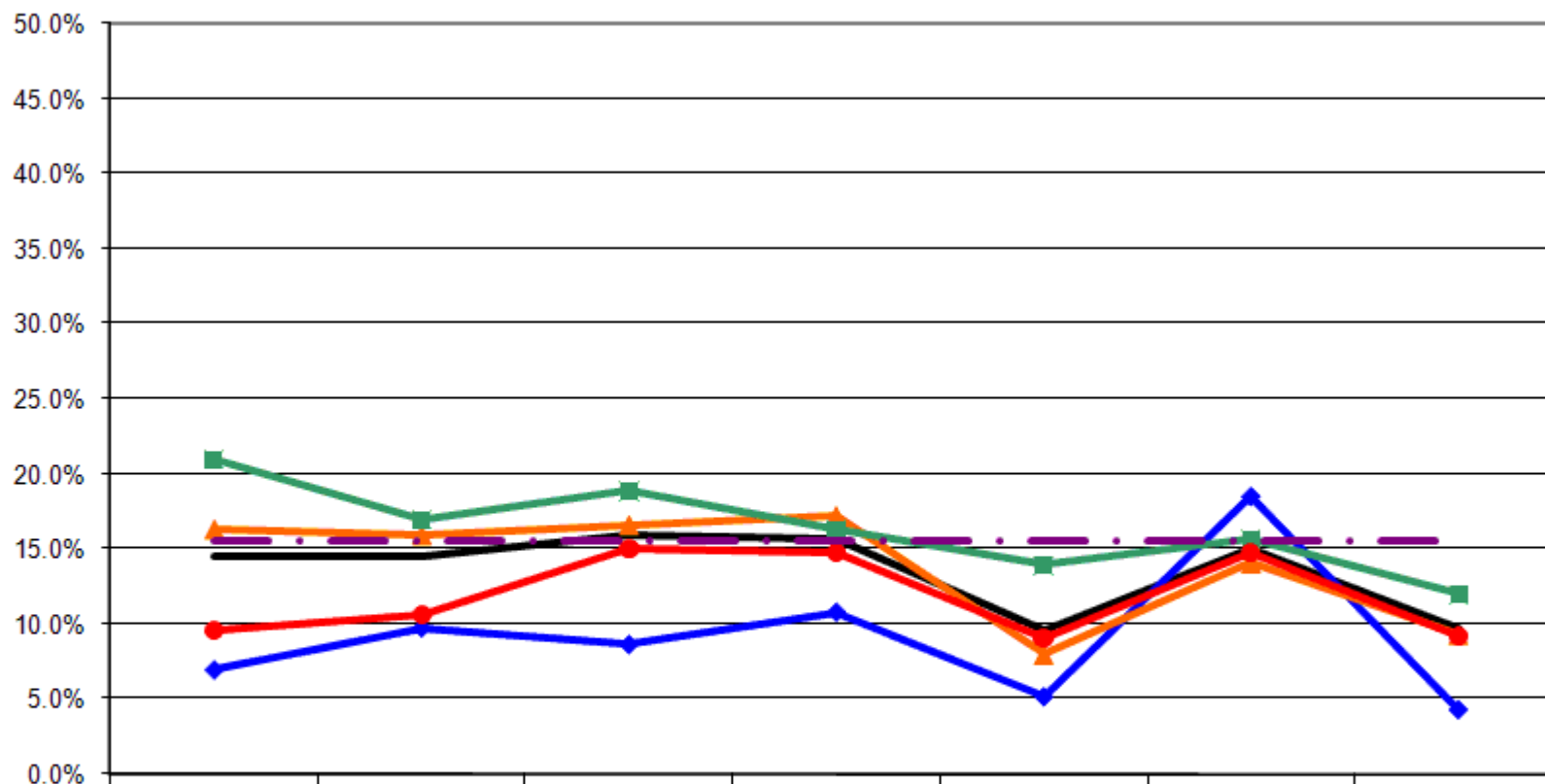
### Binge Drinking Rate By Income



	1997	1999	2001	2003	2005	2007	2009
— Total	14.5%	14.5%	15.9%	15.7%	9.6%	15.0%	9.7%
—◆— <\$15K	8.8%	14.3%	10.8%	10.6%	6.6%	19.2%	13.3%
—▲— \$15-25K	17.1%	13.7%	15.0%	17.5%	9.0%	11.4%	12.5%
—■— \$25-50K	16.2%	20.3%	19.7%	17.2%	12.8%	14.5%	9.9%
—●— \$50K+	18.4%	12.5%	17.3%	18.9%	10.1%	18.4%	9.3%
- - - US Total Rate*							15.5%

\*Source: 2008 CDC BRFSS

### Binge Drinking Rate By Education



	1997	1999	2001	2003	2005	2007	2009
— Total	14.5%	14.5%	15.9%	15.7%	9.6%	15.0%	9.7%
—◆— <HS	7.0%	9.8%	8.7%	10.8%	5.2%	18.5%	4.3%
—▲— HS or GED	16.3%	15.9%	16.5%	17.2%	8.0%	14.0%	9.3%
—■— Some College	21.0%	17.0%	18.9%	16.3%	13.9%	15.6%	12.0%
—●— College Degree +	9.5%	10.6%	15.1%	14.8%	9.0%	14.8%	9.2%
- - - US Total Rate*							15.5%

\*Source: 2008 CDC BRFSS

Interview Year 1997

		Binge drinkers (males having five or more drinks on one occasion, females having four or more drinks on one occasion)	
		Yes	No
<b>Total</b>		<b>14.5%</b>	<b>85.5%</b>
Gender	Male	25.9%	74.1%
	Female	7.3%	92.7%
Age	18 - 24	26.4%	73.6%
	25 - 34	26.4%	73.6%
	35 - 44	18.4%	81.6%
	45 - 54	15.2%	84.8%
	55 - 64	7.3%	92.7%
	65+	1.2%	98.8%
Employed	Yes	21.2%	78.8%
	No	5.6%	94.4%
Income	< \$15K	8.8%	91.2%
	\$15-25K	17.1%	82.9%
	\$25-50K	16.2%	83.8%
	\$50K +	18.4%	81.6%
Education	Less than High School	7.0%	93.0%
	High School Diploma or GED	16.3%	83.7%
	Some College/Technical	21.0%	79.0%
	College Degree or Higher	9.5%	90.5%

Interview Year 1999

		Binge drinkers (males having five or more drinks on one occasion, females having four or more drinks on one occasion)	
		Yes	No
<b>Total</b>		<b>14.5%</b>	<b>85.5%</b>
Gender	Male	17.9%	82.1%
	Female	11.9%	88.1%
Age	18 - 24	34.3%	65.7%
	25 - 34	28.4%	71.6%
	35 - 44	15.6%	84.4%
	45 - 54	13.3%	86.7%
	55 - 64	6.0%	94.0%
	65+	3.4%	96.6%
Employed	Yes	20.9%	79.1%
	No	5.3%	94.7%
Income	< \$15K	14.3%	85.7%
	\$15-25K	13.7%	86.3%
	\$25-50K	20.3%	79.7%
	\$50K +	12.5%	87.5%
Education	Less than High School	9.8%	90.2%
	High School Diploma or GED	15.9%	84.1%
	Some College/Technical	17.0%	83.0%
	College Degree or Higher	10.6%	89.4%

Interview Year 2001

		Binge drinkers (males having five or more drinks on one occasion, females having four or more drinks on one occasion)	
		Yes	No
<b>Total</b>		<b>15.9%</b>	<b>84.1%</b>
Gender	Male	22.1%	77.9%
	Female	10.9%	89.1%
Age	18 - 24	43.9%	56.1%
	25 - 34	31.4%	68.6%
	35 - 44	20.7%	79.3%
	45 - 54	15.2%	84.8%
	55 - 64	7.1%	92.9%
	65+	.5%	99.5%
Employed	Yes	24.4%	75.6%
	No	4.9%	95.1%
Income	< \$15K	10.8%	89.2%
	\$15-25K	15.0%	85.0%
	\$25-50K	19.7%	80.3%
	\$50K +	17.3%	82.7%
Education	Less than High School	8.7%	91.3%
	High School Diploma or GED	16.5%	83.5%
	Some College/Technical	18.9%	81.1%
	College Degree or Higher	15.1%	84.9%

Interview Year 2003

		Binge drinkers (males having five or more drinks on one occasion, females having four or more drinks on one occasion)	
		Yes	No
<b>Total</b>		<b>15.7%</b>	<b>84.3%</b>
Gender	Male	25.3%	74.7%
	Female	6.7%	93.3%
Age	18 - 24	36.2%	63.8%
	25 - 34	25.0%	75.0%
	35 - 44	18.5%	81.5%
	45 - 54	13.6%	86.4%
	55 - 64	7.1%	92.9%
	65+	3.8%	96.2%
Employed	Yes	20.4%	79.6%
	No	8.5%	91.5%
Income	< \$15K	10.6%	89.4%
	\$15-25K	17.5%	82.5%
	\$25-50K	17.2%	82.8%
	\$50K +	18.9%	81.1%
Education	Less than High School	10.8%	89.2%
	High School Diploma or GED	17.2%	82.8%
	Some College/Technical	16.3%	83.7%
	College Degree or Higher	14.8%	85.2%

Interview Year 2005

		Binge drinkers (males having five or more drinks on one occasion, females having four or more drinks on one occasion)	
		Yes	No
<b>Total</b>		<b>9.6%</b>	<b>90.4%</b>
Gender	Male	17.7%	82.3%
	Female	4.7%	95.3%
Age	18 - 24	12.5%	87.5%
	25 - 34	24.7%	75.3%
	35 - 44	12.2%	87.8%
	45 - 54	9.2%	90.8%
	55 - 64	9.0%	91.0%
	65+	1.8%	98.2%
Employed	Yes	13.2%	86.8%
	No	5.1%	94.9%
Income	< \$15K	6.6%	93.4%
	\$15-25K	9.0%	91.0%
	\$25-50K	12.8%	87.2%
	\$50K +	10.1%	89.9%
Education	Less than High School	5.2%	94.8%
	High School Diploma or GED	8.0%	92.0%
	Some College/Technical	13.9%	86.1%
	College Degree or Higher	9.0%	91.0%

Interview Year 2007

		Binge drinkers (males having five or more drinks on one occasion, females having four or more drinks on one occasion)	
		Yes	No
<b>Total</b>		<b>15.0%</b>	<b>85.0%</b>
Gender	Male	19.5%	80.5%
	Female	10.7%	89.3%
Age	18 - 24	31.4%	68.6%
	25 - 34	23.1%	76.9%
	35 - 44	14.7%	85.3%
	45 - 54	19.3%	80.7%
	55 - 64	7.7%	92.3%
	65+	6.9%	93.1%
Employed	Yes	18.2%	81.8%
	No	8.9%	91.1%
Income	< \$15K	19.2%	80.8%
	\$15-25K	11.4%	88.6%
	\$25-50K	14.5%	85.5%
	\$50K +	18.4%	81.6%
Education	Less than High School	18.5%	81.5%
	High School Diploma or GED	14.0%	86.0%
	Some College/Technical	15.6%	84.4%
	College Degree or Higher	14.8%	85.2%

Interview Year 2009

		Binge drinkers (males having five or more drinks on one occasion, females having four or more drinks on one occasion)	
		Yes	No
<b>Total</b>		<b>9.7%</b>	<b>90.3%</b>
Gender	Male	15.0%	85.0%
	Female	4.9%	95.1%
Age	18 - 24	26.7%	73.3%
	25 - 34	10.8%	89.2%
	35 - 44	11.7%	88.3%
	45 - 54	9.1%	90.9%
	55 - 64	5.8%	94.2%
	65+	2.3%	97.7%
Employed	Yes	11.8%	88.2%
	No	7.5%	92.5%
Income	< \$15K	13.3%	86.7%
	\$15-25K	12.5%	87.5%
	\$25-50K	9.9%	90.1%
	\$50K +	9.3%	90.7%
Education	Less than High School	4.3%	95.7%
	High School Diploma or GED	9.3%	90.7%
	Some College/Technical	12.0%	88.0%
	College Degree or Higher	9.2%	90.8%

			Binge drinkers (males having five or more drinks on one occasion, females having four or more drinks on one occasion)	
			Yes	No
Gender	1997	Male	25.9%	74.1%
		Female	7.3%	92.7%
	1999	Male	17.9%	82.1%
		Female	11.9%	88.1%
	2001	Male	22.1%	77.9%
		Female	10.9%	89.1%
	2003	Male	25.3%	74.7%
		Female	6.7%	93.3%
	2005	Male	17.7%	82.3%
		Female	4.7%	95.3%
	2007	Male	19.5%	80.5%
		Female	10.7%	89.3%
	2009	Male	15.0%	85.0%
		Female	4.9%	95.1%

Binge drinkers (males having five or more  
drinks on one occasion, females having four or  
more drinks on one occasion)

			Yes	No
Age	1997	18 - 24	26.4%	73.6%
		25 - 34	26.4%	73.6%
		35 - 44	18.4%	81.6%
		45 - 54	15.2%	84.8%
		55 - 64	7.3%	92.7%
		65+	1.2%	98.8%
	1999	18 - 24	34.3%	65.7%
		25 - 34	28.4%	71.6%
		35 - 44	15.6%	84.4%
		45 - 54	13.3%	86.7%
		55 - 64	6.0%	94.0%
		65+	3.4%	96.6%
	2001	18 - 24	43.9%	56.1%
		25 - 34	31.4%	68.6%
		35 - 44	20.7%	79.3%
		45 - 54	15.2%	84.8%
		55 - 64	7.1%	92.9%
		65+	.5%	99.5%
	2003	18 - 24	36.2%	63.8%
		25 - 34	25.0%	75.0%
		35 - 44	18.5%	81.5%
		45 - 54	13.6%	86.4%
		55 - 64	7.1%	92.9%
		65+	3.8%	96.2%
	2005	18 - 24	12.5%	87.5%
		25 - 34	24.7%	75.3%
		35 - 44	12.2%	87.8%
		45 - 54	9.2%	90.8%
		55 - 64	9.0%	91.0%
		65+	1.8%	98.2%
2007	18 - 24	31.4%	68.6%	
	25 - 34	23.1%	76.9%	
	35 - 44	14.7%	85.3%	
	45 - 54	19.3%	80.7%	
	55 - 64	7.7%	92.3%	
	65+	6.9%	93.1%	
2009	18 - 24	26.7%	73.3%	
	25 - 34	10.8%	89.2%	
	35 - 44	11.7%	88.3%	
	45 - 54	9.1%	90.9%	
	55 - 64	5.8%	94.2%	
	65+	2.3%	97.7%	

Binge drinkers (males having five or more  
drinks on one occasion, females having four or  
more drinks on one occasion)

			Yes	No
Employment Status	1997	Employed	21.2%	78.8%
		Not Employed	5.6%	94.4%
	1999	Employed	20.9%	79.1%
		Not Employed	5.3%	94.7%
	2001	Employed	24.4%	75.6%
		Not Employed	4.9%	95.1%
	2003	Employed	20.4%	79.6%
		Not Employed	8.5%	91.5%
	2005	Employed	13.2%	86.8%
		Not Employed	5.1%	94.9%
	2007	Employed	18.2%	81.8%
		Not Employed	8.9%	91.1%
	2009	Employed	11.8%	88.2%
		Not Employed	7.5%	92.5%

Binge drinkers (males having five or more  
drinks on one occasion, females having four or  
more drinks on one occasion)

			Yes	No
Income Level	1997	< \$15K	8.8%	91.2%
		\$15-25K	17.1%	82.9%
		\$25-50K	16.2%	83.8%
		\$50K +	18.4%	81.6%
	1999	< \$15K	14.3%	85.7%
		\$15-25K	13.7%	86.3%
		\$25-50K	20.3%	79.7%
		\$50K +	12.5%	87.5%
	2001	< \$15K	10.8%	89.2%
		\$15-25K	15.0%	85.0%
		\$25-50K	19.7%	80.3%
		\$50K +	17.3%	82.7%
	2003	< \$15K	10.6%	89.4%
		\$15-25K	17.5%	82.5%
		\$25-50K	17.2%	82.8%
		\$50K +	18.9%	81.1%
	2005	< \$15K	6.6%	93.4%
		\$15-25K	9.0%	91.0%
		\$25-50K	12.8%	87.2%
		\$50K +	10.1%	89.9%
	2007	< \$15K	19.2%	80.8%
		\$15-25K	11.4%	88.6%
		\$25-50K	14.5%	85.5%
		\$50K +	18.4%	81.6%
	2009	< \$15K	13.3%	86.7%
		\$15-25K	12.5%	87.5%
		\$25-50K	9.9%	90.1%
		\$50K +	9.3%	90.7%

Binge drinkers (males having five or more  
drinks on one occasion, females having four or  
more drinks on one occasion)

			Yes	No
Education	1997	Less than High School	7.0%	93.0%
		High School Diploma or GED	16.3%	83.7%
		Some College/Technical	21.0%	79.0%
		College Degree or Higher	9.5%	90.5%
	1999	Less than High School	9.8%	90.2%
		High School Diploma or GED	15.9%	84.1%
		Some College/Technical	17.0%	83.0%
		College Degree or Higher	10.6%	89.4%
	2001	Less than High School	8.7%	91.3%
		High School Diploma or GED	16.5%	83.5%
		Some College/Technical	18.9%	81.1%
		College Degree or Higher	15.1%	84.9%
	2003	Less than High School	10.8%	89.2%
		High School Diploma or GED	17.2%	82.8%
		Some College/Technical	16.3%	83.7%
		College Degree or Higher	14.8%	85.2%
	2005	Less than High School	5.2%	94.8%
		High School Diploma or GED	8.0%	92.0%
		Some College/Technical	13.9%	86.1%
		College Degree or Higher	9.0%	91.0%
2007	Less than High School	18.5%	81.5%	
	High School Diploma or GED	14.0%	86.0%	
	Some College/Technical	15.6%	84.4%	
	College Degree or Higher	14.8%	85.2%	
2009	Less than High School	4.3%	95.7%	
	High School Diploma or GED	9.3%	90.7%	
	Some College/Technical	12.0%	88.0%	
	College Degree or Higher	9.2%	90.8%	