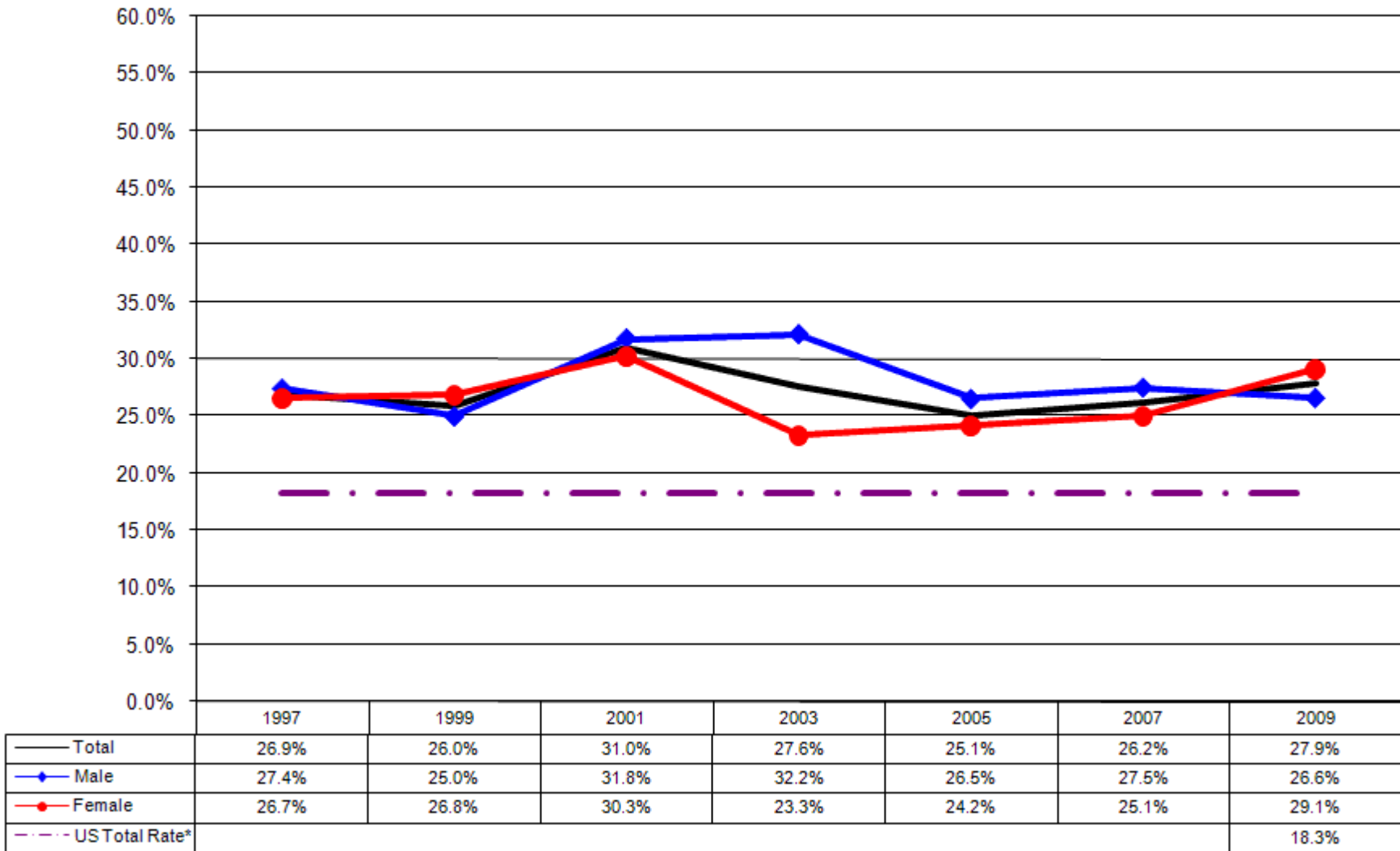


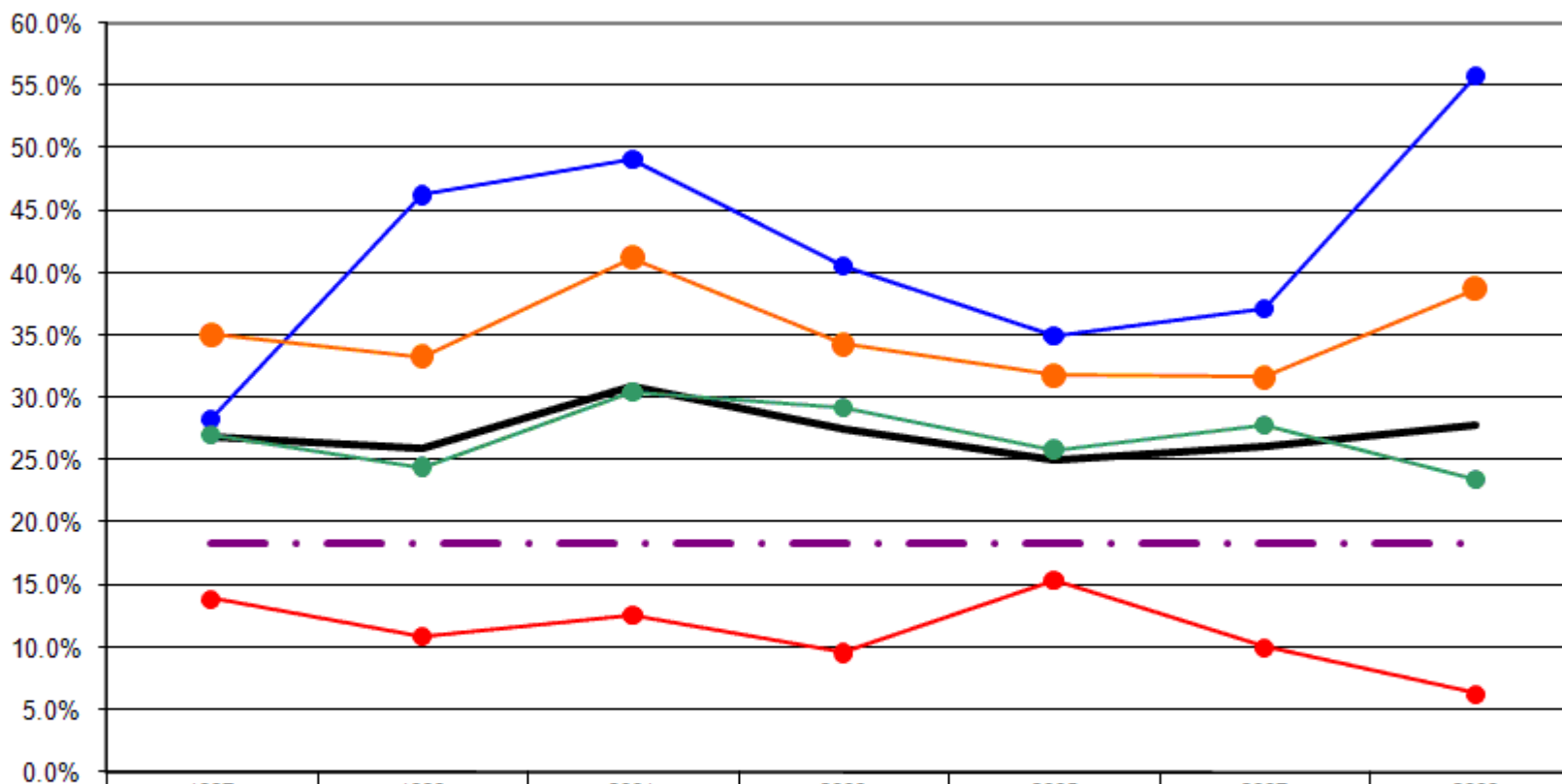
12 Year Review Current Smoker Rate

Current Smoker Rate By Gender



*Source: 2008 CDC BRFSS

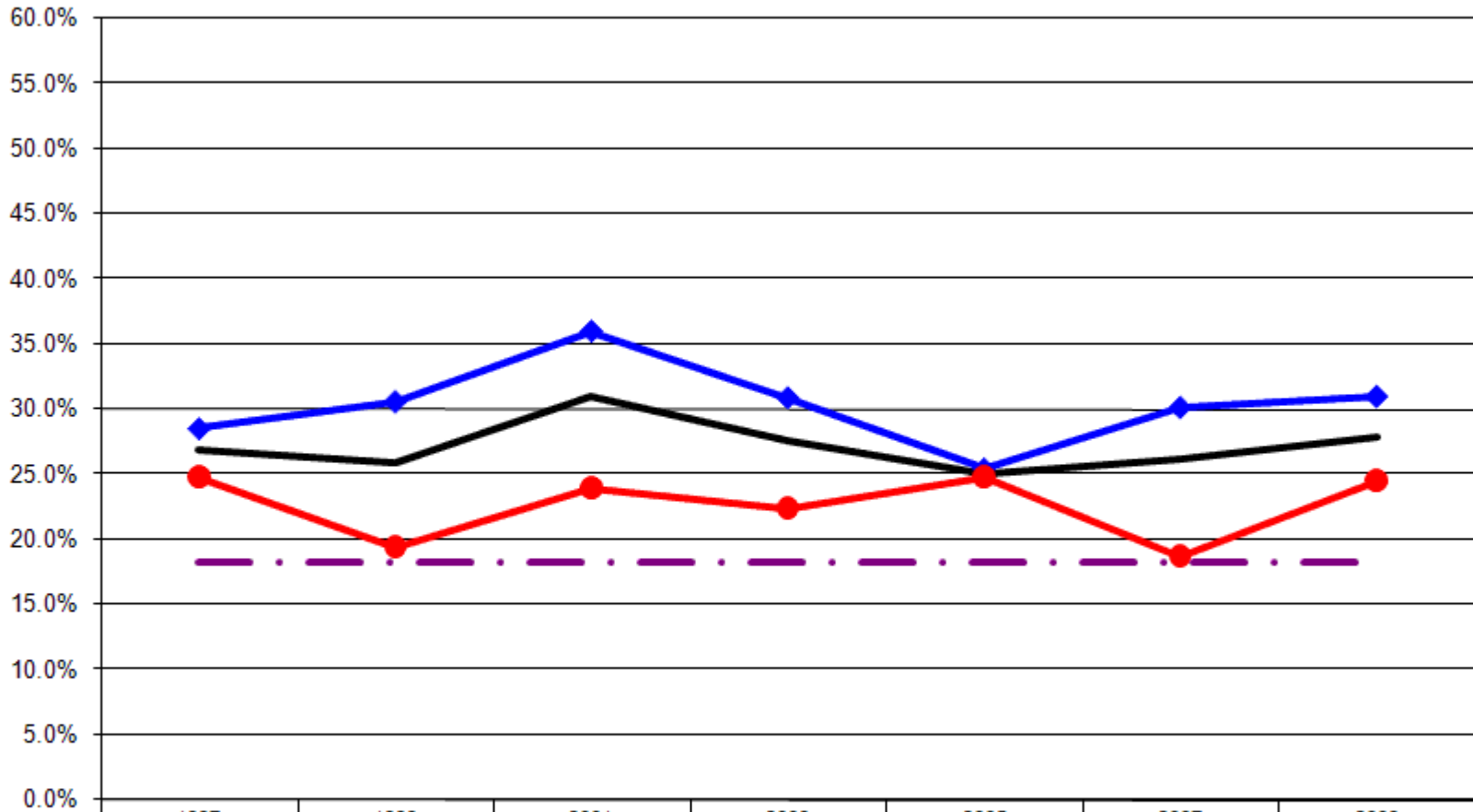
Current Smoker Rate By Age



	1997	1999	2001	2003	2005	2007	2009
— Total	26.9%	26.0%	31.0%	27.6%	25.1%	26.2%	27.9%
—●— 18-24	28.3%	46.3%	49.1%	40.6%	35.0%	37.1%	55.8%
—●— 25-44	35.1%	33.3%	41.2%	34.3%	31.8%	31.7%	38.7%
—●— 45-64	27.1%	24.5%	30.5%	29.2%	25.9%	27.9%	23.5%
—●— 65+	13.9%	10.9%	12.6%	9.6%	15.4%	10.0%	6.3%
- · - · - US Total Rate*							18.3%

*Source: 2008 CDC BRFSS

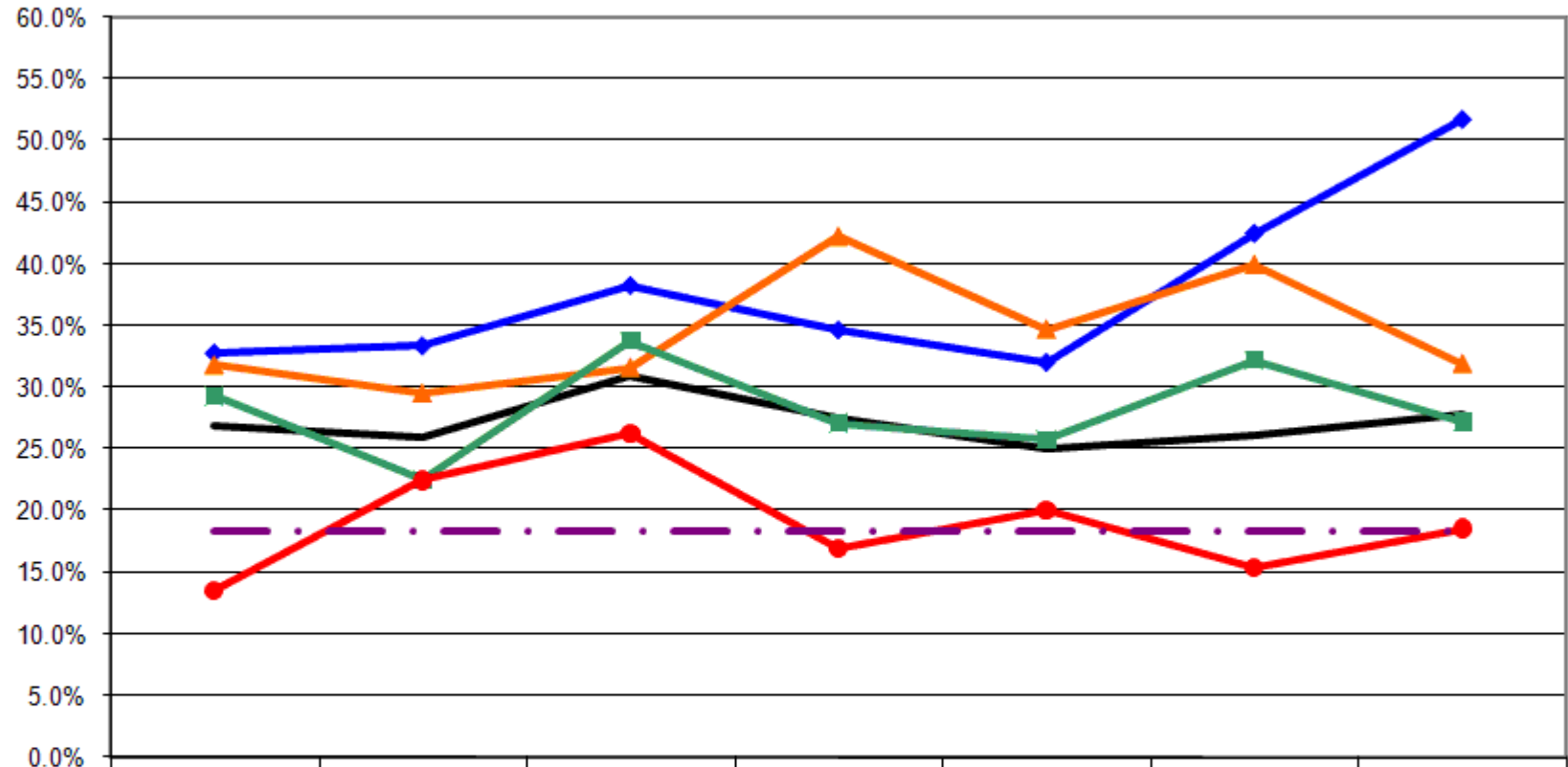
Current Smoker Rate By Employment Status



	1997	1999	2001	2003	2005	2007	2009
— Total	26.9%	26.0%	31.0%	27.6%	25.1%	26.2%	27.9%
—◆— Employed	28.5%	30.6%	36.0%	30.9%	25.4%	30.2%	31.0%
—●— Not Employed	24.8%	19.5%	23.9%	22.4%	24.8%	18.8%	24.6%
-.-.- US Total Rate*							18.3%

*Source: 2008 CDC BRFSS

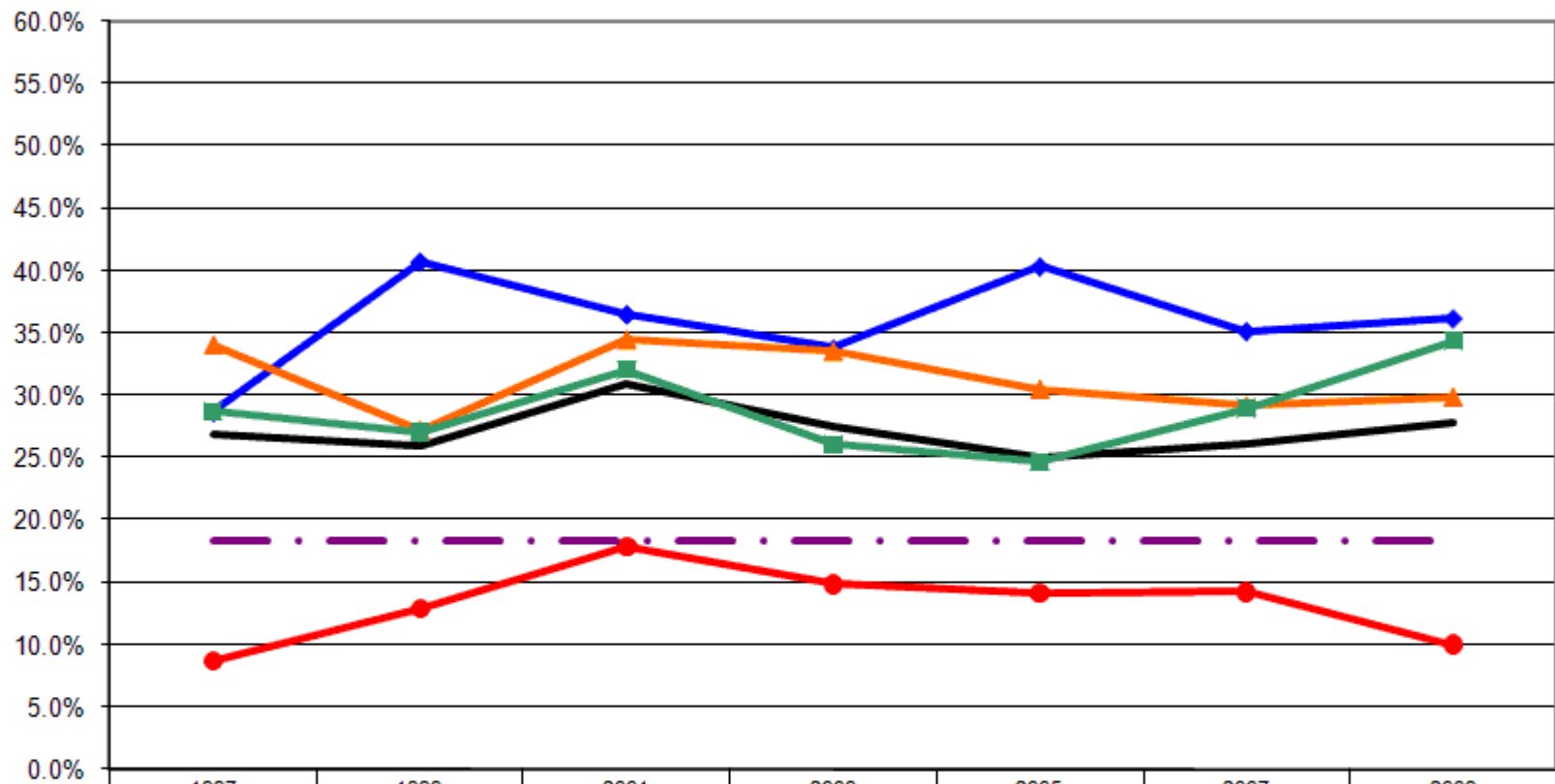
Current Smoker Rate By Income



	1997	1999	2001	2003	2005	2007	2009
— Total	26.9%	26.0%	31.0%	27.6%	25.1%	26.2%	27.9%
—◆— <\$15K	32.7%	33.3%	38.2%	34.6%	32.0%	42.5%	51.7%
—▲— \$15-25K	31.8%	29.5%	31.6%	42.3%	34.7%	40.0%	31.9%
—■— \$25-50K	29.3%	22.5%	33.7%	27.1%	25.8%	32.2%	27.2%
—●— \$50K+	13.6%	22.5%	26.3%	17.0%	20.1%	15.5%	18.6%
-.-.- US Total Rate*							18.3%

*Source: 2008 CDC BRFSS

Current Smoker Rate By Education



	1997	1999	2001	2003	2005	2007	2009
— Total	26.9%	26.0%	31.0%	27.6%	25.1%	26.2%	27.9%
—◆— <HS	28.7%	40.7%	36.5%	33.8%	40.4%	35.2%	36.2%
—▲— HS or GED	34.1%	27.2%	34.5%	33.6%	30.5%	29.2%	29.9%
—■— Some College	28.7%	27.1%	32.1%	26.1%	24.7%	29.0%	34.4%
—●— College Degree +	8.7%	12.9%	17.8%	14.8%	14.1%	14.2%	10.0%
-.-.- US Total Rate*							18.3%

*Source: 2008 CDC BRFSS

Interview Year 1997

		Current Smoke Rate	
		Yes	No
Total		26.9%	73.1%
Gender	Male	27.4%	72.6%
	Female	26.7%	73.3%
Age	18 - 24	28.3%	71.7%
	25 - 34	36.4%	63.6%
	35 - 44	33.8%	66.2%
	45 - 54	25.3%	74.7%
	55 - 64	29.3%	70.7%
	65+	13.9%	86.1%
Employed	Yes	28.5%	71.5%
	No	24.8%	75.2%
Income	< \$15K	32.7%	67.3%
	\$15-25K	31.8%	68.2%
	\$25-50K	29.3%	70.7%
	\$50K +	13.6%	86.4%
Education	Less than High School	28.7%	71.3%
	High School Diploma or GED	34.1%	65.9%
	Some College/Technical	28.7%	71.3%
	College Degree or Higher	8.7%	91.3%

Interview Year 1999

		Current Smoke Rate	
		Yes	No
Total		26.0%	74.0%
Gender	Male	25.0%	75.0%
	Female	26.8%	73.2%
Age	18 - 24	46.3%	53.7%
	25 - 34	30.3%	69.7%
	35 - 44	35.7%	64.3%
	45 - 54	28.3%	71.7%
	55 - 64	18.0%	82.0%
	65+	10.8%	89.2%
Employed	Yes	30.6%	69.4%
	No	19.5%	80.5%
Income	< \$15K	33.3%	66.7%
	\$15-25K	29.5%	70.5%
	\$25-50K	22.5%	77.5%
	\$50K +	22.5%	77.5%
Education	Less than High School	40.7%	59.3%
	High School Diploma or GED	27.2%	72.8%
	Some College/Technical	27.1%	72.9%
	College Degree or Higher	12.9%	87.1%

Interview Year 2001

		Current Smoke Rate	
		Yes	No
Total		31.0%	69.0%
Gender	Male	31.8%	68.2%
	Female	30.3%	69.7%
Age	18 - 24	49.1%	50.9%
	25 - 34	39.0%	61.0%
	35 - 44	42.8%	57.2%
	45 - 54	34.8%	65.2%
	55 - 64	24.5%	75.5%
	65+	12.6%	87.4%
Employed	Yes	36.0%	64.0%
	No	23.9%	76.1%
Income	< \$15K	38.2%	61.8%
	\$15-25K	31.6%	68.4%
	\$25-50K	33.7%	66.3%
	\$50K +	26.3%	73.7%
Education	Less than High School	36.5%	63.5%
	High School Diploma or GED	34.5%	65.5%
	Some College/Technical	32.1%	67.9%
	College Degree or Higher	17.8%	82.2%

Interview Year 2003

		Current Smoke Rate	
		Yes	No
Total		27.6%	72.4%
Gender	Male	32.2%	67.8%
	Female	23.3%	76.7%
Age	18 - 24	40.6%	59.4%
	25 - 34	29.5%	70.5%
	35 - 44	38.5%	61.5%
	45 - 54	30.9%	69.1%
	55 - 64	27.1%	72.9%
	65+	9.6%	90.4%
Employed	Yes	30.9%	69.1%
	No	22.4%	77.6%
Income	< \$15K	34.6%	65.4%
	\$15-25K	42.3%	57.7%
	\$25-50K	27.1%	72.9%
	\$50K +	17.0%	83.0%
Education	Less than High School	33.8%	66.2%
	High School Diploma or GED	33.6%	66.4%
	Some College/Technical	26.1%	73.9%
	College Degree or Higher	14.8%	85.2%

Interview Year 2005

		Current Smoke Rate	
		Yes	No
Total		25.1%	74.9%
Gender	Male	26.5%	73.5%
	Female	24.2%	75.8%
Age	18 - 24	35.0%	65.0%
	25 - 34	33.3%	66.7%
	35 - 44	30.8%	69.2%
	45 - 54	27.5%	72.5%
	55 - 64	24.0%	76.0%
	65+	15.4%	84.6%
Employed	Yes	25.4%	74.6%
	No	24.8%	75.2%
Income	< \$15K	32.0%	68.0%
	\$15-25K	34.7%	65.3%
	\$25-50K	25.8%	74.2%
	\$50K +	20.1%	79.9%
Education	Less than High School	40.4%	59.6%
	High School Diploma or GED	30.5%	69.5%
	Some College/Technical	24.7%	75.3%
	College Degree or Higher	14.1%	85.9%

Interview Year 2007

		Current Smoke Rate	
		Yes	No
Total		26.2%	73.8%
Gender	Male	27.5%	72.5%
	Female	25.1%	74.9%
Age	18 - 24	37.1%	62.9%
	25 - 34	34.2%	65.8%
	35 - 44	29.5%	70.5%
	45 - 54	34.5%	65.5%
	55 - 64	21.1%	78.9%
	65+	10.0%	90.0%
Employed	Yes	30.2%	69.8%
	No	18.8%	81.3%
Income	< \$15K	42.5%	57.5%
	\$15-25K	40.0%	60.0%
	\$25-50K	32.2%	67.8%
	\$50K +	15.5%	84.5%
Education	Less than High School	35.2%	64.8%
	High School Diploma or GED	29.2%	70.8%
	Some College/Technical	29.0%	71.0%
	College Degree or Higher	14.2%	85.8%

Interview Year 2009

		Current Smoke Rate	
		Yes	No
Total		27.9%	72.1%
Gender	Male	26.6%	73.4%
	Female	29.1%	70.9%
Age	18 - 24	55.8%	44.2%
	25 - 34	45.0%	55.0%
	35 - 44	32.4%	67.6%
	45 - 54	24.5%	75.5%
	55 - 64	22.3%	77.7%
	65+	6.3%	93.7%
Employed	Yes	31.0%	69.0%
	No	24.6%	75.4%
Income	< \$15K	51.7%	48.3%
	\$15-25K	31.9%	68.1%
	\$25-50K	27.2%	72.8%
	\$50K +	18.6%	81.4%
Education	Less than High School	36.2%	63.8%
	High School Diploma or GED	29.9%	70.1%
	Some College/Technical	34.4%	65.6%
	College Degree or Higher	10.0%	90.0%

			Current Smoke Rate	
			Yes	No
Gender	1997	Male	27.4%	72.6%
		Female	26.7%	73.3%
	1999	Male	25.0%	75.0%
		Female	26.8%	73.2%
	2001	Male	31.8%	68.2%
		Female	30.3%	69.7%
	2003	Male	32.2%	67.8%
		Female	23.3%	76.7%
	2005	Male	26.5%	73.5%
		Female	24.2%	75.8%
	2007	Male	27.5%	72.5%
		Female	25.1%	74.9%
	2009	Male	26.6%	73.4%
		Female	29.1%	70.9%

Income Level			Current Smoke Rate	
			Yes	No
1997	< \$15K		32.7%	67.3%
	\$15-25K		31.8%	68.2%
	\$25-50K		29.3%	70.7%
	\$50K +		13.6%	86.4%
1999	< \$15K		33.3%	66.7%
	\$15-25K		29.5%	70.5%
	\$25-50K		22.5%	77.5%
	\$50K +		22.5%	77.5%
2001	< \$15K		38.2%	61.8%
	\$15-25K		31.6%	68.4%
	\$25-50K		33.7%	66.3%
	\$50K +		26.3%	73.7%
2003	< \$15K		34.6%	65.4%
	\$15-25K		42.3%	57.7%
	\$25-50K		27.1%	72.9%
	\$50K +		17.0%	83.0%
2005	< \$15K		32.0%	68.0%
	\$15-25K		34.7%	65.3%
	\$25-50K		25.8%	74.2%
	\$50K +		20.1%	79.9%
2007	< \$15K		42.5%	57.5%
	\$15-25K		40.0%	60.0%
	\$25-50K		32.2%	67.8%
	\$50K +		15.5%	84.5%
2009	< \$15K		51.7%	48.3%
	\$15-25K		31.9%	68.1%
	\$25-50K		27.2%	72.8%
	\$50K +		18.6%	81.4%

Age			Current Smoke Rate	
			Yes	No
Age	1997	18 - 24	28.3%	71.7%
		25 - 34	36.4%	63.6%
		35 - 44	33.8%	66.2%
		45 - 54	25.3%	74.7%
		55 - 64	29.3%	70.7%
		65+	13.9%	86.1%
	1999	18 - 24	46.3%	53.7%
		25 - 34	30.3%	69.7%
		35 - 44	35.7%	64.3%
		45 - 54	28.3%	71.7%
		55 - 64	18.0%	82.0%
		65+	10.8%	89.2%
	2001	18 - 24	49.1%	50.9%
		25 - 34	39.0%	61.0%
		35 - 44	42.8%	57.2%
		45 - 54	34.8%	65.2%
		55 - 64	24.5%	75.5%
		65+	12.6%	87.4%
	2003	18 - 24	40.6%	59.4%
		25 - 34	29.5%	70.5%
		35 - 44	38.5%	61.5%
		45 - 54	30.9%	69.1%
		55 - 64	27.1%	72.9%
		65+	9.6%	90.4%
	2005	18 - 24	35.0%	65.0%
		25 - 34	33.3%	66.7%
		35 - 44	30.8%	69.2%
		45 - 54	27.5%	72.5%
		55 - 64	24.0%	76.0%
		65+	15.4%	84.6%
2007	18 - 24	37.1%	62.9%	
	25 - 34	34.2%	65.8%	
	35 - 44	29.5%	70.5%	
	45 - 54	34.5%	65.5%	
	55 - 64	21.1%	78.9%	
	65+	10.0%	90.0%	
2009	18 - 24	55.8%	44.2%	
	25 - 34	45.0%	55.0%	
	35 - 44	32.4%	67.6%	
	45 - 54	24.5%	75.5%	
	55 - 64	22.3%	77.7%	
	65+	6.3%	93.7%	

			Current Smoke Rate	
			Yes	No
Employment Status	1997	Employed	28.5%	71.5%
		Not Employed	24.8%	75.2%
	1999	Employed	30.6%	69.4%
		Not Employed	19.5%	80.5%
	2001	Employed	36.0%	64.0%
		Not Employed	23.9%	76.1%
	2003	Employed	30.9%	69.1%
		Not Employed	22.4%	77.6%
	2005	Employed	25.4%	74.6%
		Not Employed	24.8%	75.2%
	2007	Employed	30.2%	69.8%
		Not Employed	18.8%	81.3%
	2009	Employed	31.0%	69.0%
		Not Employed	24.6%	75.4%

			Current Smoke Rate	
			Yes	No
Education	1997	Less than High School	28.7%	71.3%
		High School Diploma or GED	34.1%	65.9%
		Some College/Technical	28.7%	71.3%
		College Degree or Higher	8.7%	91.3%
	1999	Less than High School	40.7%	59.3%
		High School Diploma or GED	27.2%	72.8%
		Some College/Technical	27.1%	72.9%
		College Degree or Higher	12.9%	87.1%
	2001	Less than High School	36.5%	63.5%
		High School Diploma or GED	34.5%	65.5%
		Some College/Technical	32.1%	67.9%
		College Degree or Higher	17.8%	82.2%
	2003	Less than High School	33.8%	66.2%
		High School Diploma or GED	33.6%	66.4%
		Some College/Technical	26.1%	73.9%
		College Degree or Higher	14.8%	85.2%
	2005	Less than High School	40.4%	59.6%
		High School Diploma or GED	30.5%	69.5%
		Some College/Technical	24.7%	75.3%
		College Degree or Higher	14.1%	85.9%
2007	Less than High School	35.2%	64.8%	
	High School Diploma or GED	29.2%	70.8%	
	Some College/Technical	29.0%	71.0%	
	College Degree or Higher	14.2%	85.8%	
2009	Less than High School	36.2%	63.8%	
	High School Diploma or GED	29.9%	70.1%	
	Some College/Technical	34.4%	65.6%	
	College Degree or Higher	10.0%	90.0%	