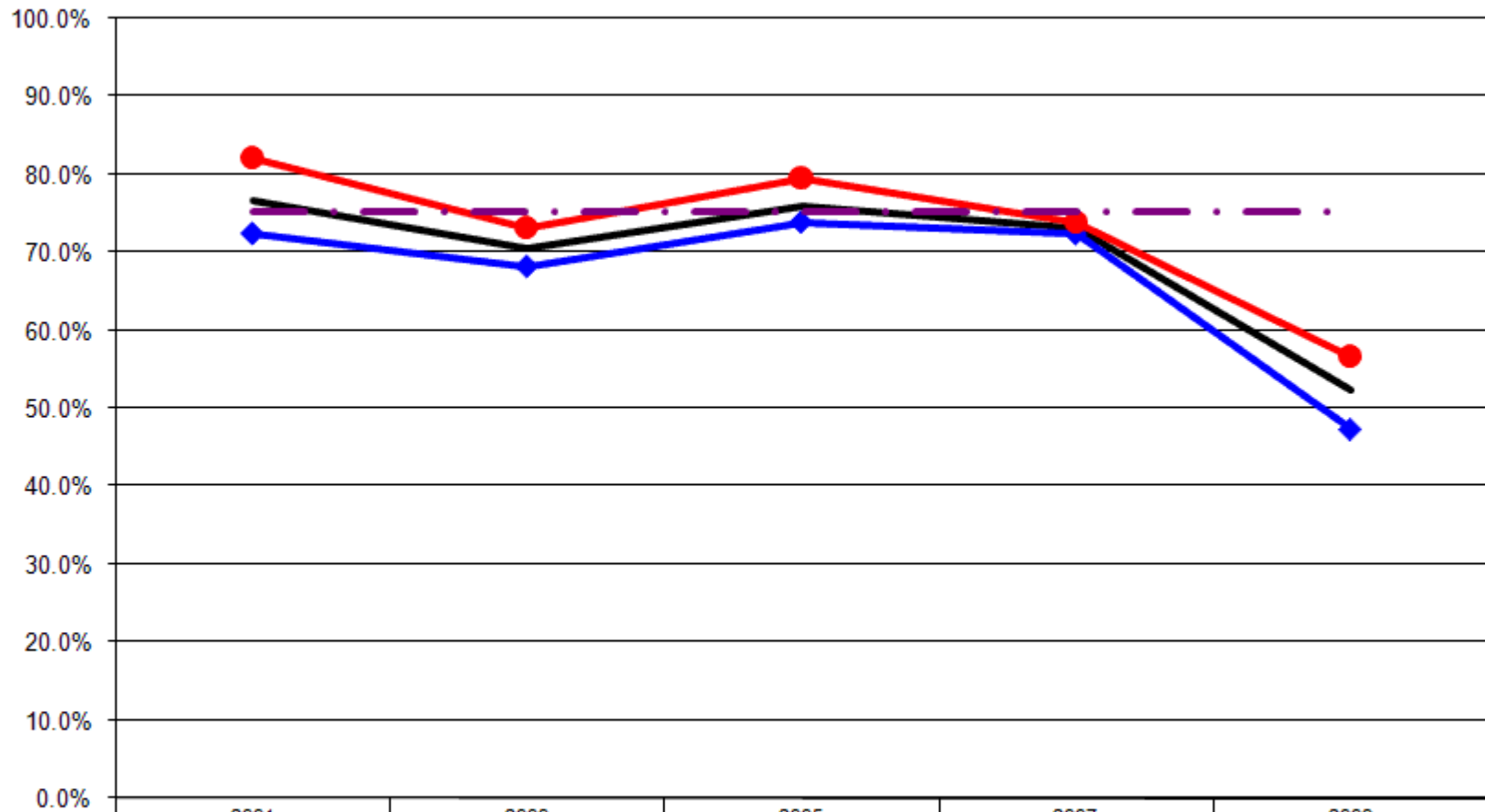


12 Year Review Exercise

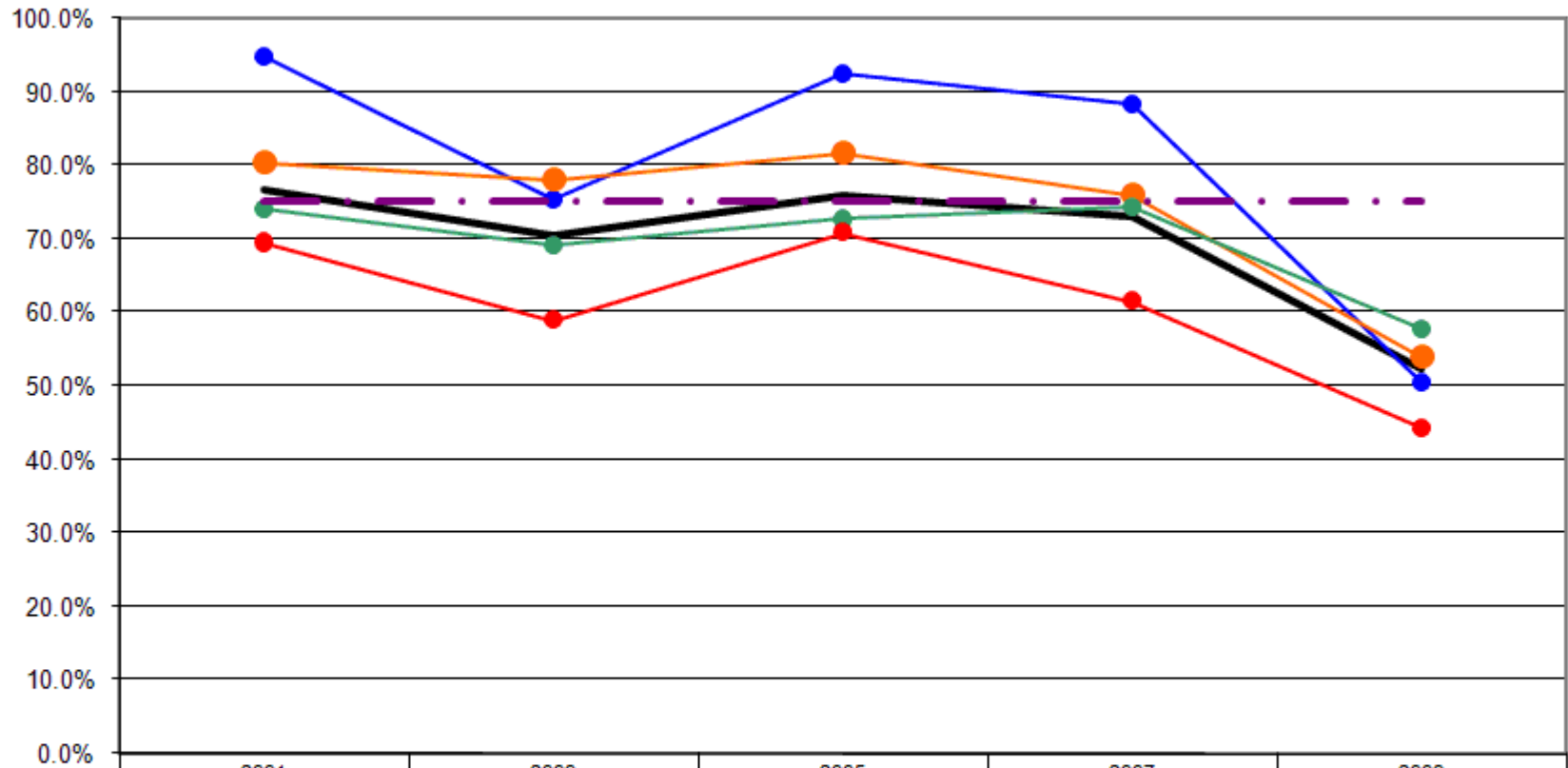
Any Physical Activity in the Past Month By Gender



	2001	2003	2005	2007	2009
— Total	76.7%	70.6%	76.0%	73.1%	52.3%
—◆ Male	72.4%	68.2%	73.9%	72.4%	47.4%
—● Female	82.1%	73.1%	79.6%	74.0%	56.7%
-.-.- US Total Rate*					75.2%

*Source: 2008 CDC BRFSS

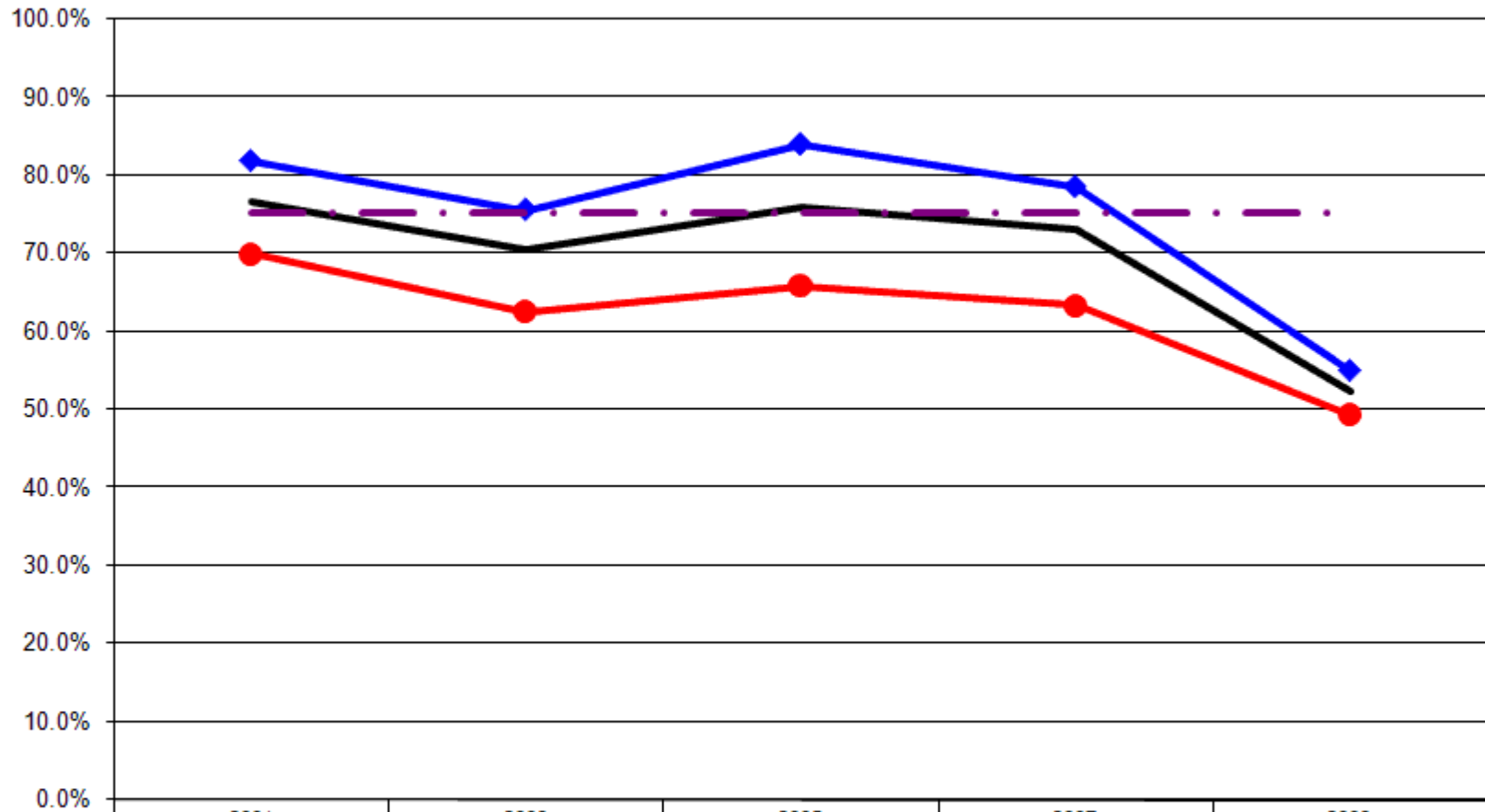
Any Physical Activity in the Past Month By Age



	2001	2003	2005	2007	2009
— Total	76.7%	70.6%	76.0%	73.1%	52.3%
● 18-24	94.7%	75.4%	92.5%	88.2%	50.6%
● 25-44	80.4%	78.1%	81.7%	75.9%	53.9%
● 45-64	74.2%	69.2%	72.7%	74.4%	57.7%
● 65+	69.5%	59.0%	70.8%	61.5%	44.3%
- - - US Total Rate*					75.2%

*Source: 2008 CDC BRFSS

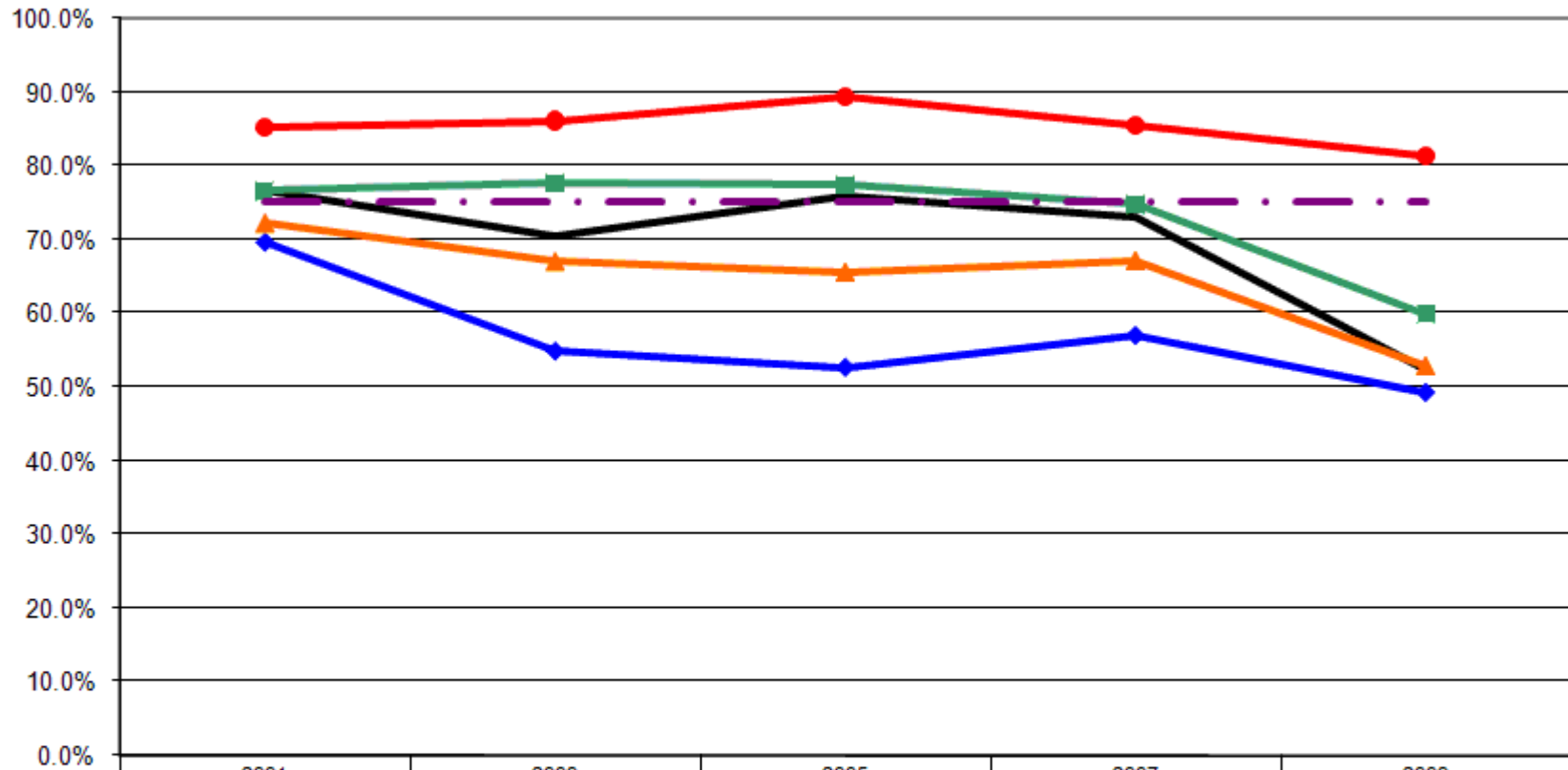
Any Physical Activity in the Past Month By Employment Status



	2001	2003	2005	2007	2009
— Total	76.7%	70.6%	76.0%	73.1%	52.3%
—◆— Employed	81.9%	75.6%	84.0%	78.6%	55.0%
—●— Not Employed	69.9%	62.5%	65.8%	63.4%	49.4%
-.-.- US Total Rate*					75.2%

*Source: 2008 CDC BRFSS

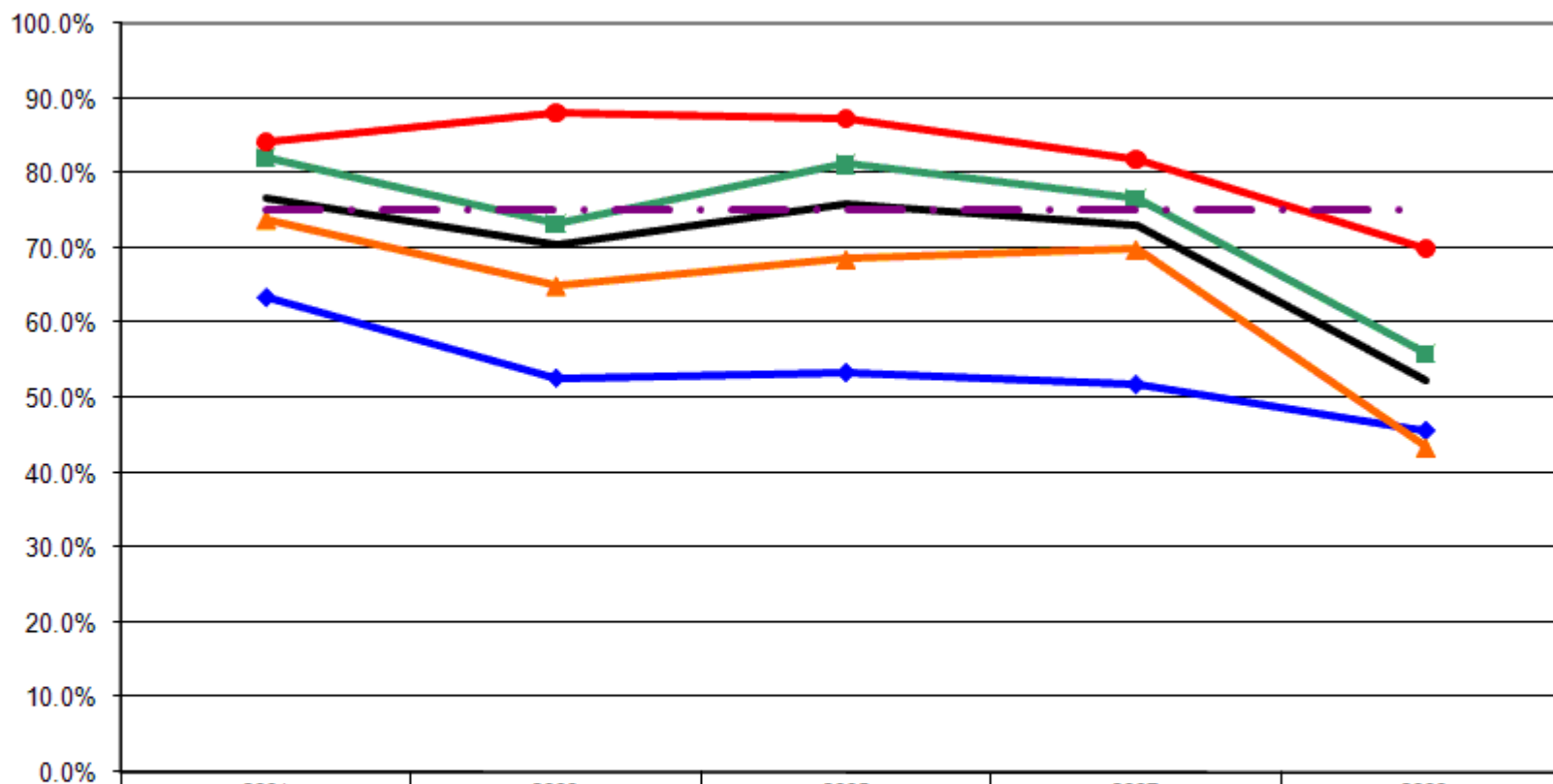
Any Physical Activity in the Past Month By Income



	2001	2003	2005	2007	2009
— Total	76.7%	70.6%	76.0%	73.1%	52.3%
—◆— <\$15K	69.6%	54.8%	52.6%	56.9%	49.2%
—▲— \$15-25K	72.2%	67.0%	65.6%	67.1%	52.9%
—■— \$25-50K	76.5%	77.6%	77.3%	74.7%	59.9%
—●— \$50K+	85.3%	86.2%	89.4%	85.5%	81.4%
- - - US Total Rate*					75.2%

*Source: 2008 CDC BRFSS

Any Physical Activity in the Past Month By Education



	2001	2003	2005	2007	2009
— Total	76.7%	70.6%	76.0%	73.1%	52.3%
—◆— <HS	63.5%	52.7%	53.4%	51.9%	45.7%
—▲— HS or GED	73.7%	64.9%	68.4%	69.7%	43.4%
—■— Some College	82.1%	73.4%	81.2%	76.7%	56.0%
—●— College Degree +	84.2%	88.1%	87.4%	81.9%	70.0%
-.-.- US Total Rate*					75.2%

*Source: 2008 CDC BRFSS

Interview Year 2001

		During the past month, did you participate in any physical activities or exercises?	
		Yes	No
Total		76.7%	23.3%
Gender	Male	82.1%	17.9%
	Female	72.4%	27.6%
Age	18 - 24	94.7%	5.3%
	25 - 34	85.7%	14.3%
	35 - 44	76.6%	23.4%
	45 - 54	71.7%	28.3%
	55 - 64	77.6%	22.4%
	65+	69.5%	30.5%
Employed	Yes	81.9%	18.1%
	No	69.9%	30.1%
Income	< \$15K	69.6%	30.4%
	\$15-25K	72.2%	27.8%
	\$25-50K	76.5%	23.5%
	\$50K +	85.3%	14.7%
Education	Less than High School	63.5%	36.5%
	High School Diploma or GED	73.7%	26.3%
	Some College/Technical	82.1%	17.9%
	College Degree or Higher	84.2%	15.8%

Interview Year 2003

		During the past month, did you participate in any physical activities or exercises?	
		Yes	No
Total		70.6%	29.4%
Gender	Male	73.1%	26.9%
	Female	68.2%	31.8%
Age	18 - 24	75.4%	24.6%
	25 - 34	82.1%	17.9%
	35 - 44	74.6%	25.4%
	45 - 54	71.8%	28.2%
	55 - 64	65.9%	34.1%
	65+	59.0%	41.0%
Employed	Yes	75.6%	24.4%
	No	62.5%	37.5%
Income	< \$15K	54.8%	45.2%
	\$15-25K	67.0%	33.0%
	\$25-50K	77.6%	22.4%
	\$50K +	86.2%	13.8%
Education	Less than High School	52.7%	47.3%
	High School Diploma or GED	64.9%	35.1%
	Some College/Technical	73.4%	26.6%
	College Degree or Higher	88.1%	11.9%

Interview Year 2005

		During the past month, did you participate in any physical activities or exercises?	
		Yes	No
Total		76.0%	24.0%
Gender	Male	79.6%	20.4%
	Female	73.9%	26.1%
Age	18 - 24	92.5%	7.5%
	25 - 34	77.4%	22.6%
	35 - 44	84.7%	15.3%
	45 - 54	77.5%	22.5%
	55 - 64	67.0%	33.0%
	65+	70.8%	29.2%
Employed	Yes	84.0%	16.0%
	No	65.8%	34.2%
Income	< \$15K	52.6%	47.4%
	\$15-25K	65.6%	34.4%
	\$25-50K	77.3%	22.7%
	\$50K +	89.4%	10.6%
Education	Less than High School	53.4%	46.6%
	High School Diploma or GED	68.4%	31.6%
	Some College/Technical	81.2%	18.8%
	College Degree or Higher	87.4%	12.6%

Interview Year 2007

		During the past month, did you participate in any physical activities or exercises?	
		Yes	No
Total		73.1%	26.9%
Gender	Male	74.0%	26.0%
	Female	72.4%	27.6%
Age	18 - 24	88.2%	11.8%
	25 - 34	78.4%	21.6%
	35 - 44	73.6%	26.4%
	45 - 54	75.7%	24.3%
	55 - 64	73.0%	27.0%
	65+	61.5%	38.5%
Employed	Yes	78.6%	21.4%
	No	63.4%	36.6%
Income	< \$15K	56.9%	43.1%
	\$15-25K	67.1%	32.9%
	\$25-50K	74.7%	25.3%
	\$50K +	85.5%	14.5%
Education	Less than High School	51.9%	48.1%
	High School Diploma or GED	69.7%	30.3%
	Some College/Technical	76.7%	23.3%
	College Degree or Higher	81.9%	18.1%

Interview Year 2009

		During the past month, did you participate in any physical activities or exercises?	
		Yes	No
Total		52.3%	47.7%
Gender	Male	47.4%	52.6%
	Female	56.7%	43.3%
Age	18 - 24	50.6%	49.4%
	25 - 34	62.4%	37.6%
	35 - 44	45.5%	54.5%
	45 - 54	59.1%	40.9%
	55 - 64	56.3%	43.7%
	65+	44.3%	55.7%
Employed	Yes	55.0%	45.0%
	No	49.4%	50.6%
Income	< \$15K	49.2%	50.8%
	\$15-25K	52.9%	47.1%
	\$25-50K	59.9%	40.1%
	\$50K +	81.4%	18.6%
Education	Less than High School	45.7%	54.3%
	High School Diploma or GED	43.4%	56.6%
	Some College/Technical	56.0%	44.0%
	College Degree or Higher	70.0%	30.0%

			During the past month, did you participate in any physical activities or exercises?	
			Yes	No
Gender	2001	Male	82.1%	17.9%
		Female	72.4%	27.6%
	2003	Male	73.1%	26.9%
		Female	68.2%	31.8%
	2005	Male	79.6%	20.4%
		Female	73.9%	26.1%
	2007	Male	74.0%	26.0%
		Female	72.4%	27.6%
	2009	Male	47.4%	52.6%
		Female	56.7%	43.3%

			During the past month, did you participate in any physical activities or exercises?	
			Yes	No
Age	2001	18 - 24	94.7%	5.3%
		25 - 34	85.7%	14.3%
		35 - 44	76.6%	23.4%
		45 - 54	71.7%	28.3%
		55 - 64	77.6%	22.4%
		65+	69.5%	30.5%
	2003	18 - 24	75.4%	24.6%
		25 - 34	82.1%	17.9%
		35 - 44	74.6%	25.4%
		45 - 54	71.8%	28.2%
		55 - 64	65.9%	34.1%
		65+	59.0%	41.0%
	2005	18 - 24	92.5%	7.5%
		25 - 34	77.4%	22.6%
		35 - 44	84.7%	15.3%
		45 - 54	77.5%	22.5%
		55 - 64	67.0%	33.0%
		65+	70.8%	29.2%
	2007	18 - 24	88.2%	11.8%
		25 - 34	78.4%	21.6%
		35 - 44	73.6%	26.4%
45 - 54		75.7%	24.3%	
55 - 64		73.0%	27.0%	
65+		61.5%	38.5%	
2009	18 - 24	50.6%	49.4%	
	25 - 34	62.4%	37.6%	
	35 - 44	45.5%	54.5%	
	45 - 54	59.1%	40.9%	
	55 - 64	56.3%	43.7%	
	65+	44.3%	55.7%	

			During the past month, did you participate in any physical activities or exercises?	
			Yes	No
Employment Status	2001	Employed	81.9%	18.1%
		Not Employed	69.9%	30.1%
	2003	Employed	75.6%	24.4%
		Not Employed	62.5%	37.5%
	2005	Employed	84.0%	16.0%
		Not Employed	65.8%	34.2%
	2007	Employed	78.6%	21.4%
		Not Employed	63.4%	36.6%
	2009	Employed	55.0%	45.0%
		Not Employed	49.4%	50.6%

			During the past month, did you participate in any physical activities or exercises?	
			Yes	No
Income Level	2001	< \$15K	69.6%	30.4%
		\$15-25K	72.2%	27.8%
		\$25-50K	76.5%	23.5%
		\$50K +	85.3%	14.7%
	2003	< \$15K	54.8%	45.2%
		\$15-25K	67.0%	33.0%
		\$25-50K	77.6%	22.4%
		\$50K +	86.2%	13.8%
	2005	< \$15K	52.6%	47.4%
		\$15-25K	65.6%	34.4%
		\$25-50K	77.3%	22.7%
		\$50K +	89.4%	10.6%
	2007	< \$15K	56.9%	43.1%
		\$15-25K	67.1%	32.9%
		\$25-50K	74.7%	25.3%
		\$50K +	85.5%	14.5%
2009	< \$15K	49.2%	50.8%	
	\$15-25K	52.9%	47.1%	
	\$25-50K	59.9%	40.1%	
	\$50K +	81.4%	18.6%	

			During the past month, did you participate in any physical activities or exercises?	
			Yes	No
Education	2001	Less than High School	63.5%	36.5%
		High School Diploma or GED	73.7%	26.3%
		Some College/Technical	82.1%	17.9%
		College Degree or Higher	84.2%	15.8%
	2003	Less than High School	52.7%	47.3%
		High School Diploma or GED	64.9%	35.1%
		Some College/Technical	73.4%	26.6%
		College Degree or Higher	88.1%	11.9%
	2005	Less than High School	53.4%	46.6%
		High School Diploma or GED	68.4%	31.6%
		Some College/Technical	81.2%	18.8%
		College Degree or Higher	87.4%	12.6%
	2007	Less than High School	51.9%	48.1%
		High School Diploma or GED	69.7%	30.3%
		Some College/Technical	76.7%	23.3%
		College Degree or Higher	81.9%	18.1%
2009	Less than High School	45.7%	54.3%	
	High School Diploma or GED	43.4%	56.6%	
	Some College/Technical	56.0%	44.0%	
	College Degree or Higher	70.0%	30.0%	