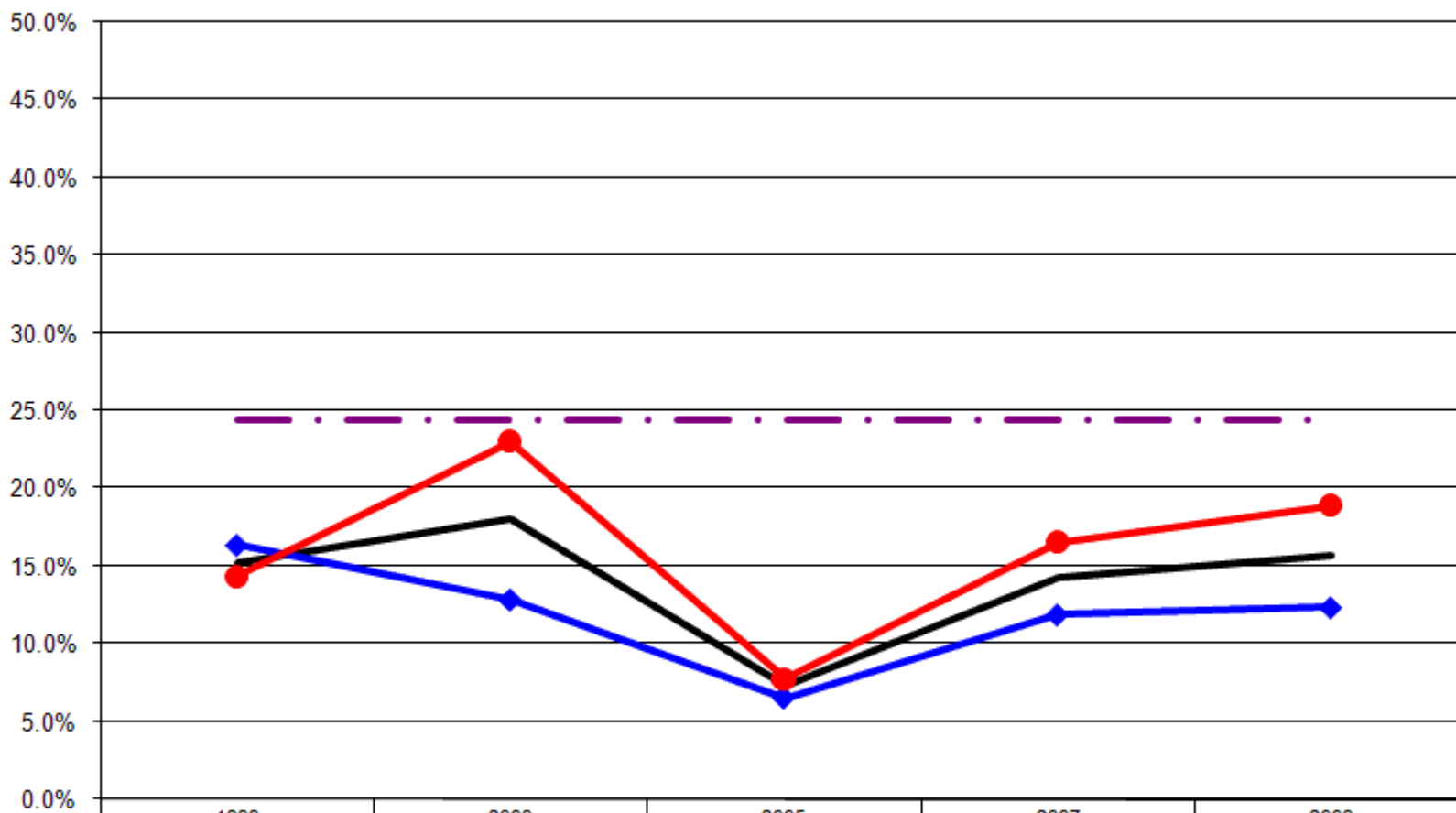


12 Year Review Nutrition

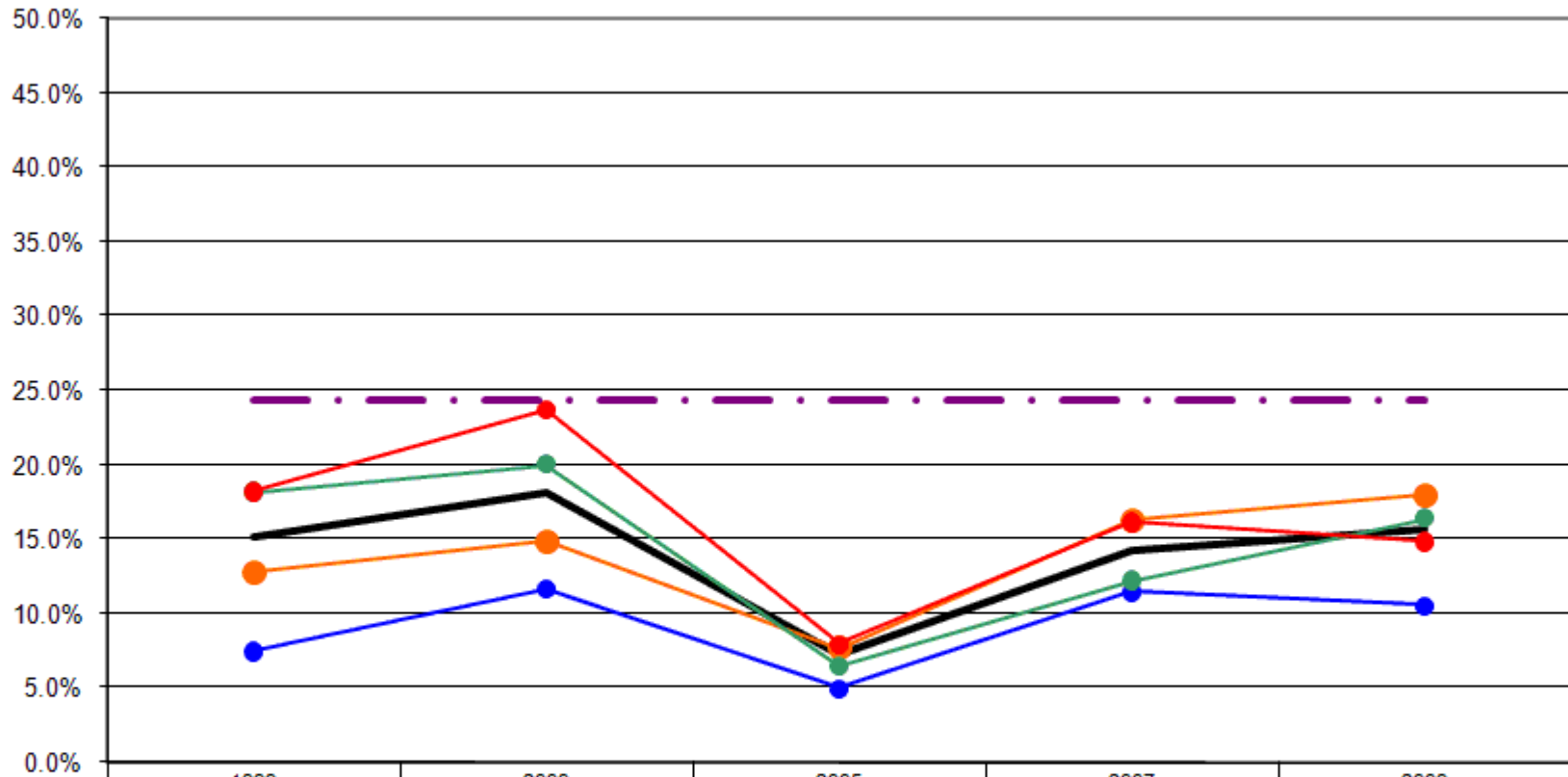
Nutrition By Gender



	1999	2003	2005	2007	2009
Total	15.2%	18.1%	7.3%	14.3%	15.7%
Male	16.3%	12.8%	6.5%	11.8%	12.3%
Female	14.4%	23.0%	7.7%	16.5%	18.9%
US Total Rate*					24.4%

*Source: 2007 CDC BRFSS

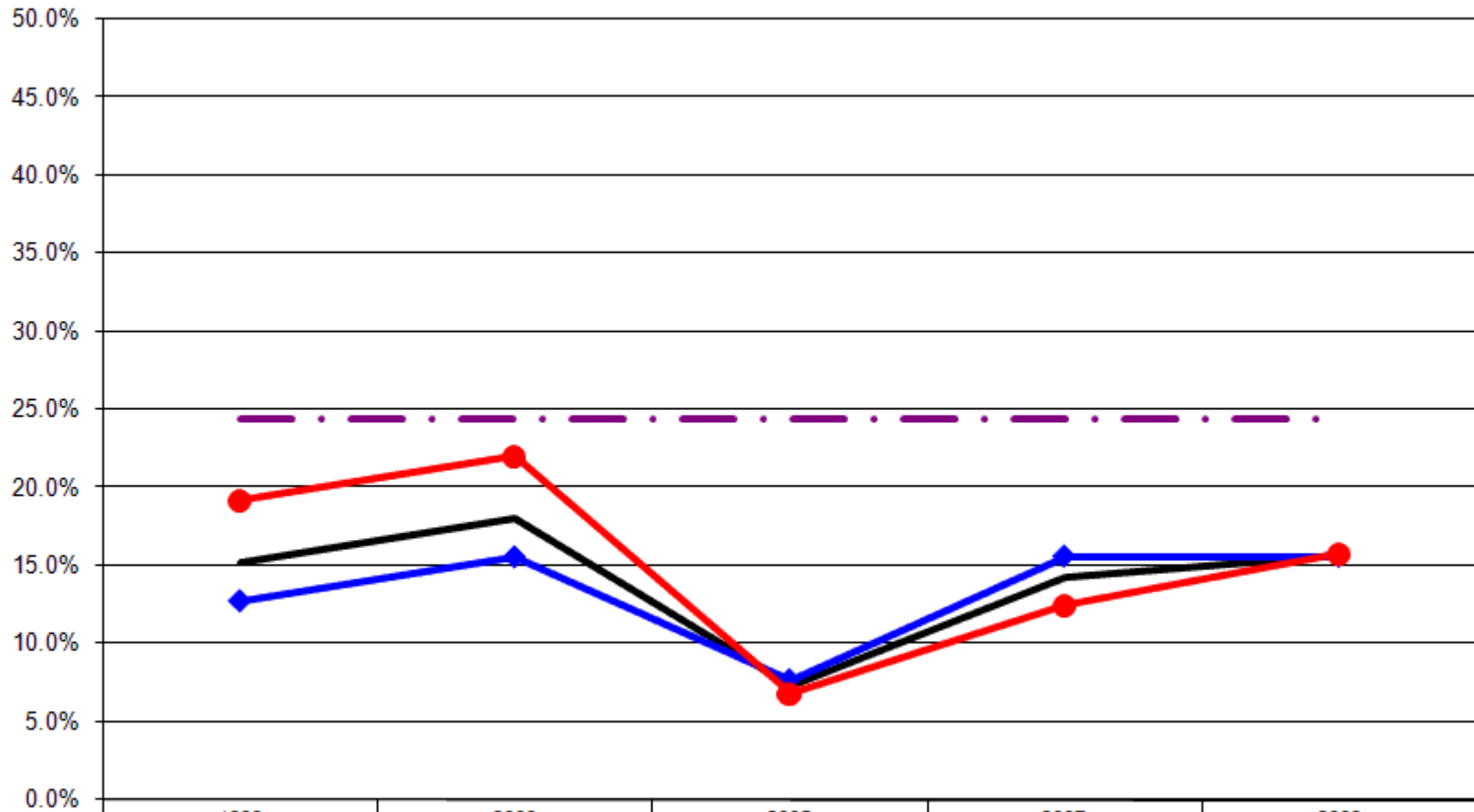
Nutrition By Age



	1999	2003	2005	2007	2009
— Total	15.2%	18.1%	7.3%	14.3%	15.7%
● 18-24	7.5%	11.6%	5.0%	11.4%	10.5%
● 25-44	12.8%	14.9%	7.7%	16.3%	18.0%
● 45-64	18.1%	20.0%	6.5%	12.2%	16.4%
● 65+	18.2%	23.7%	8.0%	16.2%	14.9%
- - - - US Total Rate*					24.4%

*Source: 2007 CDC BRFSS

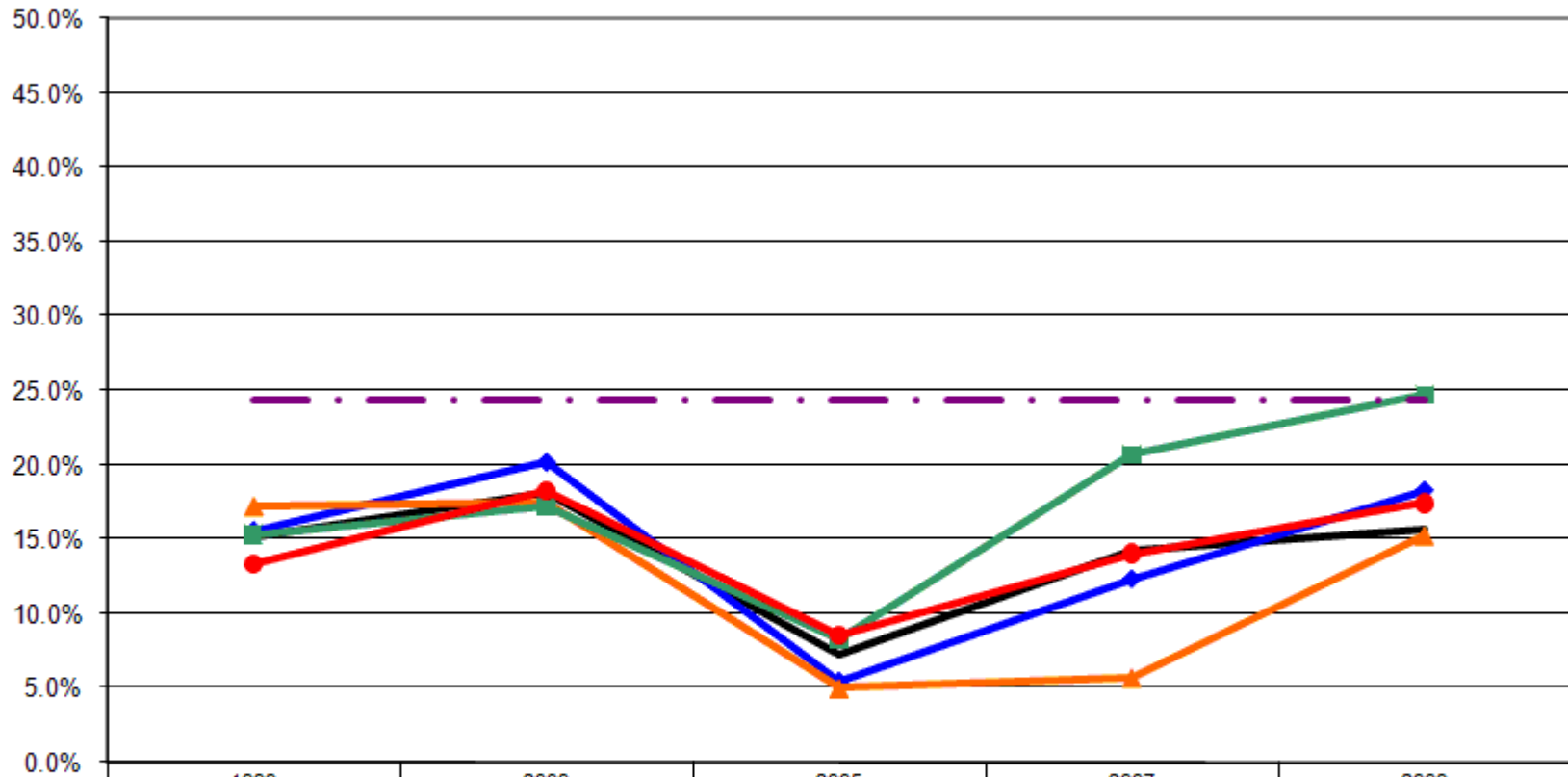
Nutrition By Employment Status



— Total	15.2%	18.1%	7.3%	14.3%	15.7%
—◆— Employed	12.7%	15.6%	7.7%	15.6%	15.6%
—●— Not Employed	19.1%	22.0%	6.8%	12.5%	15.8%
-.-.- US Total Rate*					24.4%

*Source: 2007 CDC BRFSS

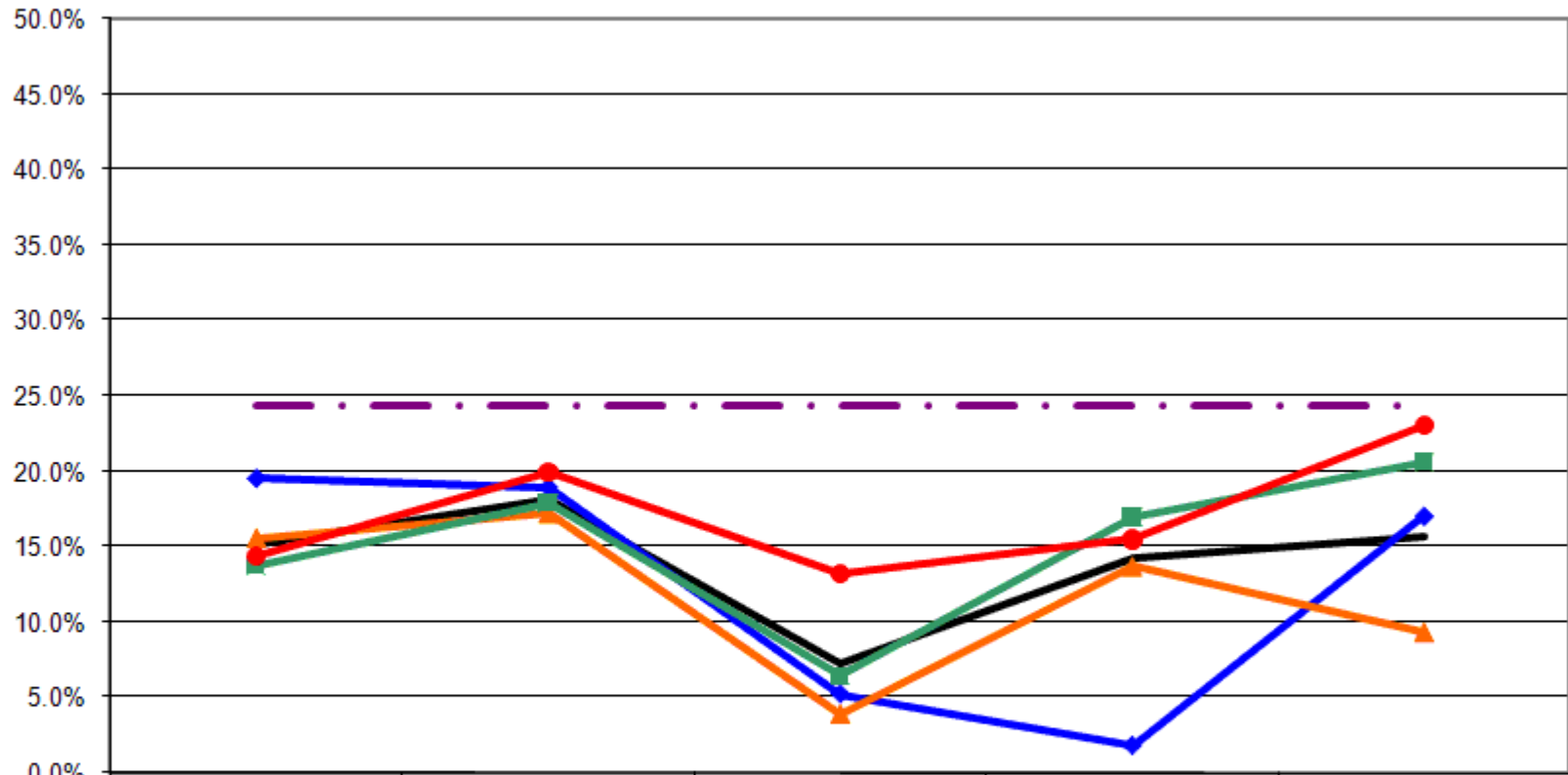
Nutrition By Income



	1999	2003	2005	2007	2009
— Total	15.2%	18.1%	7.3%	14.3%	15.7%
—◆— <\$15K	15.6%	20.2%	5.4%	12.3%	18.3%
—▲— \$15-25K	17.3%	17.5%	5.0%	5.7%	15.3%
—■— \$25-50K	15.3%	17.2%	8.3%	20.7%	24.7%
—●— \$50K+	13.3%	18.2%	8.5%	14.0%	17.4%
- - - US Total Rate*					24.4%

*Source: 2007 CDC BRFSS

Nutrition By Education



	1999	2003	2005	2007	2009
— Total	15.2%	18.1%	7.3%	14.3%	15.7%
—◆— <HS	19.5%	18.9%	5.3%	1.9%	17.0%
—▲— HS or GED	15.5%	17.2%	3.9%	13.6%	9.3%
—■— Some College	13.8%	17.9%	6.5%	17.0%	20.6%
—●— College Degree +	14.4%	20.0%	13.2%	15.5%	23.1%
- - - US Total Rate*					24.4%

*Source: 2007 CDC BRFSS

Interview Year 1999

		Adults who have consumed fruits and vegetables five or more times per day	
		Yes	No
Total		15.2%	84.8%
Gender	Male	16.3%	83.7%
	Female	14.4%	85.6%
Age	18 - 24	7.5%	92.5%
	25 - 34	15.6%	84.4%
	35 - 44	10.6%	89.4%
	45 - 54	16.7%	83.3%
	55 - 64	20.0%	80.0%
	65+	18.2%	81.8%
Employed	Yes	12.7%	87.3%
	No	19.1%	80.9%
Income	< \$15K	15.6%	84.4%
	\$15-25K	17.3%	82.7%
	\$25-50K	15.3%	84.7%
	\$50K +	13.3%	86.7%
Education	Less than High School	19.5%	80.5%
	High School Diploma or GED	15.5%	84.5%
	Some College/Technical	13.8%	86.2%
	College Degree or Higher	14.4%	85.6%

Interview Year 2003

		Adults who have consumed fruits and vegetables five or more times per day	
		Yes	No
Total		18.1%	81.9%
Gender	Male	12.8%	87.2%
	Female	23.0%	77.0%
Age	18 - 24	11.6%	88.4%
	25 - 34	17.0%	83.0%
	35 - 44	13.1%	86.9%
	45 - 54	21.8%	78.2%
	55 - 64	17.6%	82.4%
	65+	23.7%	76.3%
Employed	Yes	15.6%	84.4%
	No	22.0%	78.0%
Income	< \$15K	20.2%	79.8%
	\$15-25K	17.5%	82.5%
	\$25-50K	17.2%	82.8%
	\$50K +	18.2%	81.8%
Education	Less than High School	18.9%	81.1%
	High School Diploma or GED	17.2%	82.8%
	Some College/Technical	17.9%	82.1%
	College Degree or Higher	20.0%	80.0%

Interview Year 2005

		Adults who have consumed fruits and vegetables five or more times per day	
		Yes	No
Total		7.3%	92.7%
Gender	Male	6.5%	93.5%
	Female	7.7%	92.3%
Age	18 - 24	5.0%	95.0%
	25 - 34	8.6%	91.4%
	35 - 44	7.0%	93.0%
	45 - 54	7.6%	92.4%
	55 - 64	5.1%	94.9%
	65+	8.0%	92.0%
Employed	Yes	7.7%	92.3%
	No	6.8%	93.2%
Income	< \$15K	5.4%	94.6%
	\$15-25K	5.0%	95.0%
	\$25-50K	8.3%	91.7%
	\$50K +	8.5%	91.5%
Education	Less than High School	5.3%	94.7%
	High School Diploma or GED	3.9%	96.1%
	Some College/Technical	6.5%	93.5%
	College Degree or Higher	13.2%	86.8%

Interview Year 2007

		Adults who have consumed fruits and vegetables five or more times per day	
		Yes	No
Total		14.3%	85.7%
Gender	Male	11.8%	88.2%
	Female	16.5%	83.5%
Age	18 - 24	11.4%	88.6%
	25 - 34	18.8%	81.2%
	35 - 44	14.0%	86.0%
	45 - 54	13.1%	86.9%
	55 - 64	11.3%	88.7%
	65+	16.2%	83.8%
Employed	Yes	15.6%	84.4%
	No	12.5%	87.5%
Income	< \$15K	12.3%	87.7%
	\$15-25K	5.7%	94.3%
	\$25-50K	20.7%	79.3%
	\$50K +	14.0%	86.0%
Education	Less than High School	1.9%	98.1%
	High School Diploma or GED	13.6%	86.4%
	Some College/Technical	17.0%	83.0%
	College Degree or Higher	15.5%	84.5%

Interview Year 2009

		Adults who have consumed fruits and vegetables five or more times per day	
		Yes	No
Total		15.7%	84.3%
Gender	Male	12.3%	87.7%
	Female	18.9%	81.1%
Age	18 - 24	10.5%	89.5%
	25 - 34	17.1%	82.9%
	35 - 44	18.9%	81.1%
	45 - 54	17.3%	82.7%
	55 - 64	15.5%	84.5%
	65+	14.9%	85.1%
Employed	Yes	15.6%	84.4%
	No	15.8%	84.2%
Income	< \$15K	18.3%	81.7%
	\$15-25K	15.3%	84.7%
	\$25-50K	24.7%	75.3%
	\$50K +	17.4%	82.6%
Education	Less than High School	17.0%	83.0%
	High School Diploma or GED	9.3%	90.7%
	Some College/Technical	20.6%	79.4%
	College Degree or Higher	23.1%	76.9%

			Adults who have consumed fruits and vegetables five or more times per day	
			Yes	No
Gender	1999	Male	16.3%	83.7%
		Female	14.4%	85.6%
	2003	Male	12.8%	87.2%
		Female	23.0%	77.0%
	2005	Male	6.5%	93.5%
		Female	7.7%	92.3%
	2007	Male	11.8%	88.2%
		Female	16.5%	83.5%
	2009	Male	12.3%	87.7%
		Female	18.9%	81.1%

			Adults who have consumed fruits and vegetables five or more times per day	
			Yes	No
Age	1999	18 - 24	7.5%	92.5%
		25 - 34	15.6%	84.4%
		35 - 44	10.6%	89.4%
		45 - 54	16.7%	83.3%
		55 - 64	20.0%	80.0%
		65+	18.2%	81.8%
	2003	18 - 24	11.6%	88.4%
		25 - 34	17.0%	83.0%
		35 - 44	13.1%	86.9%
		45 - 54	21.8%	78.2%
		55 - 64	17.6%	82.4%
		65+	23.7%	76.3%
	2005	18 - 24	5.0%	95.0%
		25 - 34	8.6%	91.4%
		35 - 44	7.0%	93.0%
		45 - 54	7.6%	92.4%
		55 - 64	5.1%	94.9%
		65+	8.0%	92.0%
	2007	18 - 24	11.4%	88.6%
		25 - 34	18.8%	81.2%
		35 - 44	14.0%	86.0%
45 - 54		13.1%	86.9%	
55 - 64		11.3%	88.7%	
65+		16.2%	83.8%	
2009	18 - 24	10.5%	89.5%	
	25 - 34	17.1%	82.9%	
	35 - 44	18.9%	81.1%	
	45 - 54	17.3%	82.7%	
	55 - 64	15.5%	84.5%	
	65+	14.9%	85.1%	

			Adults who have consumed fruits and vegetables five or more times per day	
			Yes	No
Employment Status	1999	Employed	12.7%	87.3%
		Not Employed	19.1%	80.9%
	2003	Employed	15.6%	84.4%
		Not Employed	22.0%	78.0%
	2005	Employed	7.7%	92.3%
		Not Employed	6.8%	93.2%
	2007	Employed	15.6%	84.4%
		Not Employed	12.5%	87.5%
	2009	Employed	15.6%	84.4%
		Not Employed	15.8%	84.2%

			Adults who have consumed fruits and vegetables five or more times per day	
			Yes	No
Income Level	1999	< \$15K	15.6%	84.4%
		\$15-25K	17.3%	82.7%
		\$25-50K	15.3%	84.7%
		\$50K +	13.3%	86.7%
	2003	< \$15K	20.2%	79.8%
		\$15-25K	17.5%	82.5%
		\$25-50K	17.2%	82.8%
		\$50K +	18.2%	81.8%
	2005	< \$15K	5.4%	94.6%
		\$15-25K	5.0%	95.0%
		\$25-50K	8.3%	91.7%
		\$50K +	8.5%	91.5%
	2007	< \$15K	12.3%	87.7%
		\$15-25K	5.7%	94.3%
		\$25-50K	20.7%	79.3%
		\$50K +	14.0%	86.0%
2009	< \$15K	18.3%	81.7%	
	\$15-25K	15.3%	84.7%	
	\$25-50K	24.7%	75.3%	
	\$50K +	17.4%	82.6%	

			Adults who have consumed fruits and vegetables five or more times per day	
			Yes	No
Education	1999	Less than High School	19.5%	80.5%
		High School Diploma or GED	15.5%	84.5%
		Some College/Technical	13.8%	86.2%
		College Degree or Higher	14.4%	85.6%
	2003	Less than High School	18.9%	81.1%
		High School Diploma or GED	17.2%	82.8%
		Some College/Technical	17.9%	82.1%
		College Degree or Higher	20.0%	80.0%
	2005	Less than High School	5.3%	94.7%
		High School Diploma or GED	3.9%	96.1%
		Some College/Technical	6.5%	93.5%
		College Degree or Higher	13.2%	86.8%
	2007	Less than High School	1.9%	98.1%
		High School Diploma or GED	13.6%	86.4%
		Some College/Technical	17.0%	83.0%
		College Degree or Higher	15.5%	84.5%
2009	Less than High School	17.0%	83.0%	
	High School Diploma or GED	9.3%	90.7%	
	Some College/Technical	20.6%	79.4%	
	College Degree or Higher	23.1%	76.9%	