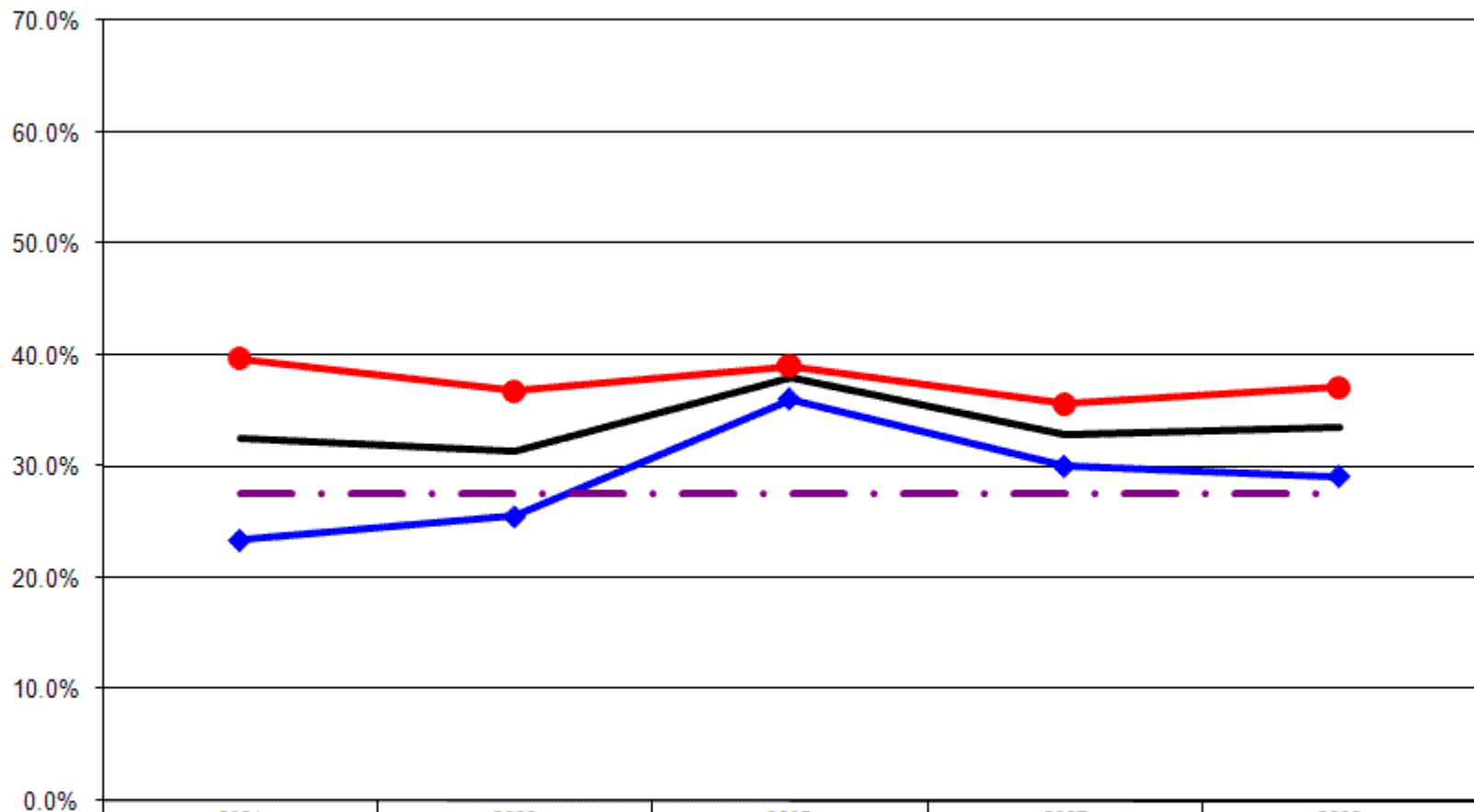


12 Year Review Arthritis

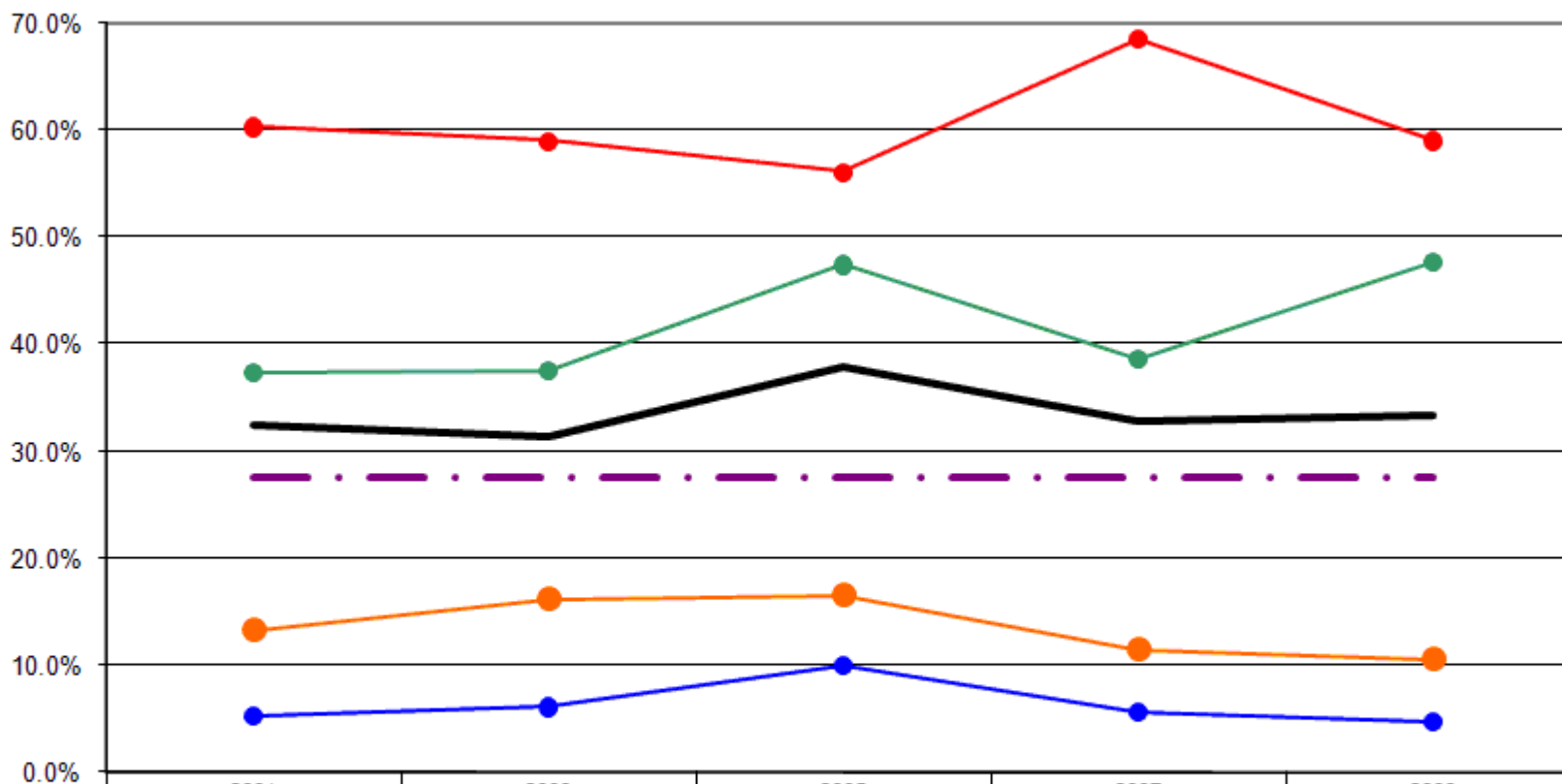
Told Ever Had Any Form of Arthritis By Gender



	2001	2003	2005	2007	2009
— Total	32.4%	31.3%	37.9%	32.9%	33.4%
—◆ Male	23.4%	25.5%	36.0%	30.0%	29.1%
—● Female	39.7%	36.8%	39.0%	35.6%	37.1%
-.-.- US Total Rate*					27.5%

*Source: 2007 CDC BRFSS

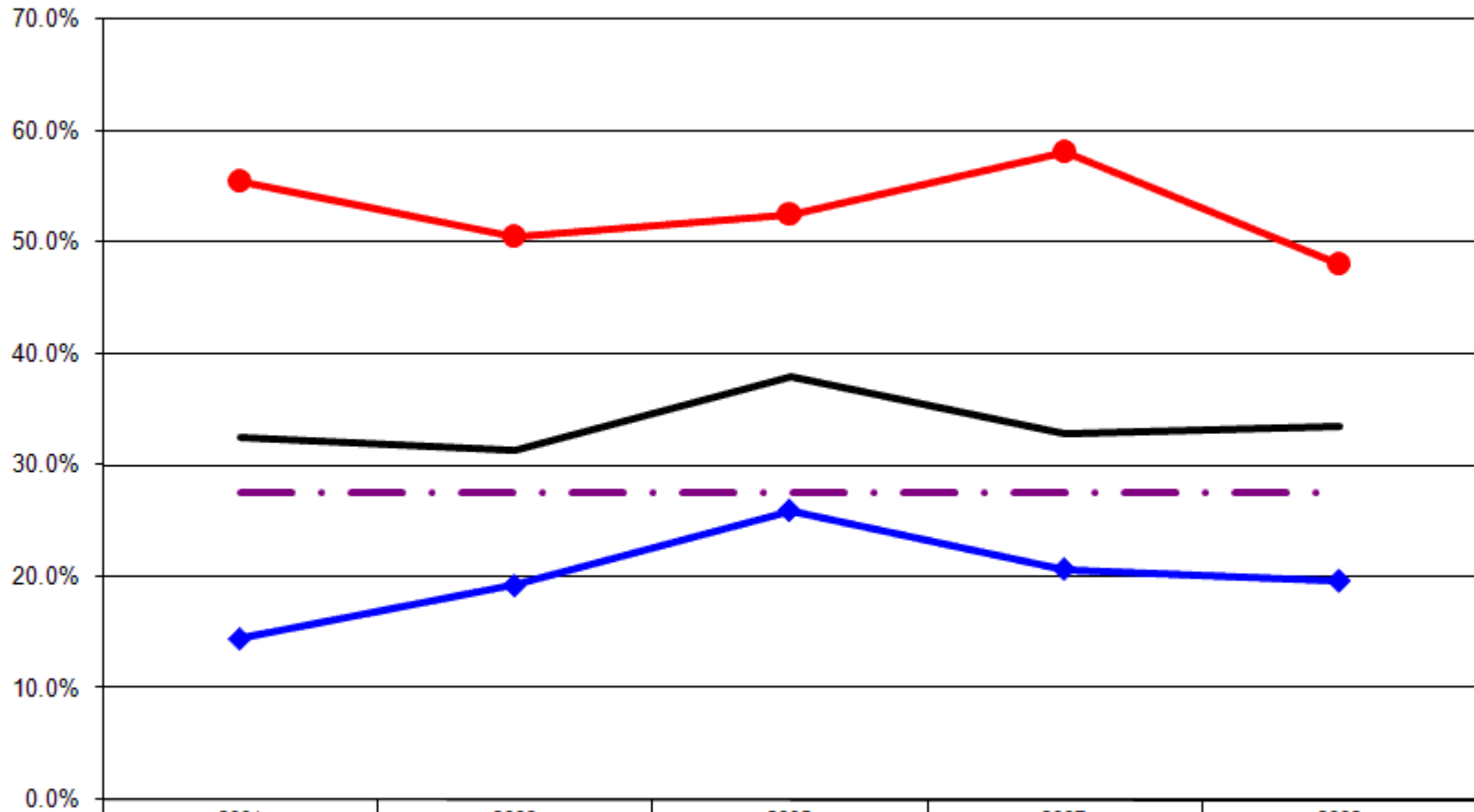
Told Ever Had Any Form of Arthritis By Age



	2001	2003	2005	2007	2009
— Total	32.4%	31.3%	37.9%	32.9%	33.4%
● 18-24	5.3%	6.2%	10.0%	5.7%	4.8%
● 25-44	13.3%	16.3%	16.6%	11.5%	10.6%
● 45-64	37.4%	37.6%	47.4%	38.7%	47.7%
● 65+	60.3%	59.0%	56.1%	68.5%	59.1%
-.-.- US Total Rate*					27.5%

*Source: 2007 CDC BRFSS

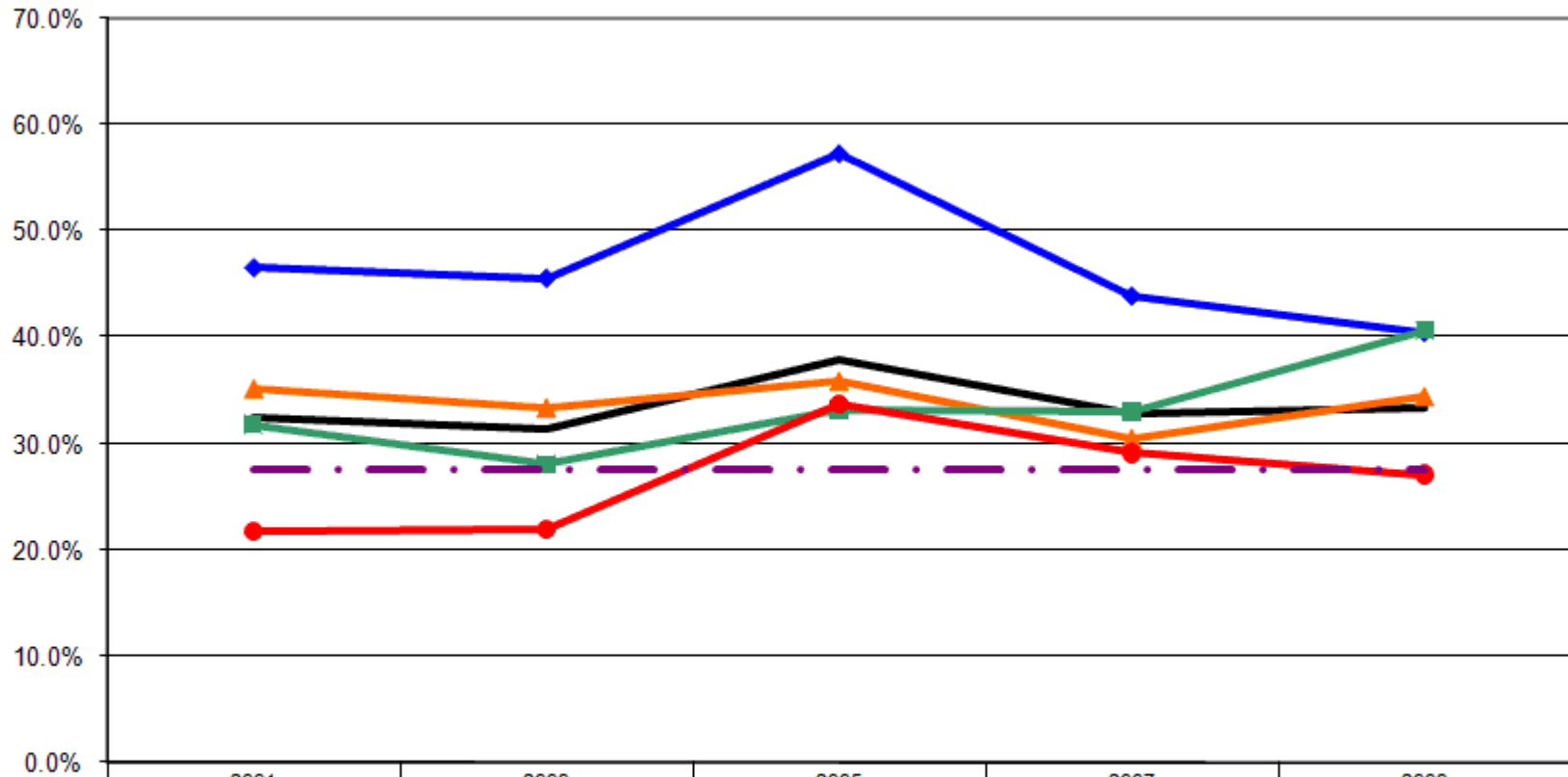
Told Ever Had Any Form of Arthritis By Employment Status



— Total	32.4%	31.3%	37.9%	32.9%	33.4%
—◆— Employed	14.5%	19.3%	26.0%	20.7%	19.7%
—●— Not Employed	55.6%	50.6%	52.6%	58.2%	48.1%
- · - · - US Total Rate*					27.5%

*Source: 2007 CDC BRFSS

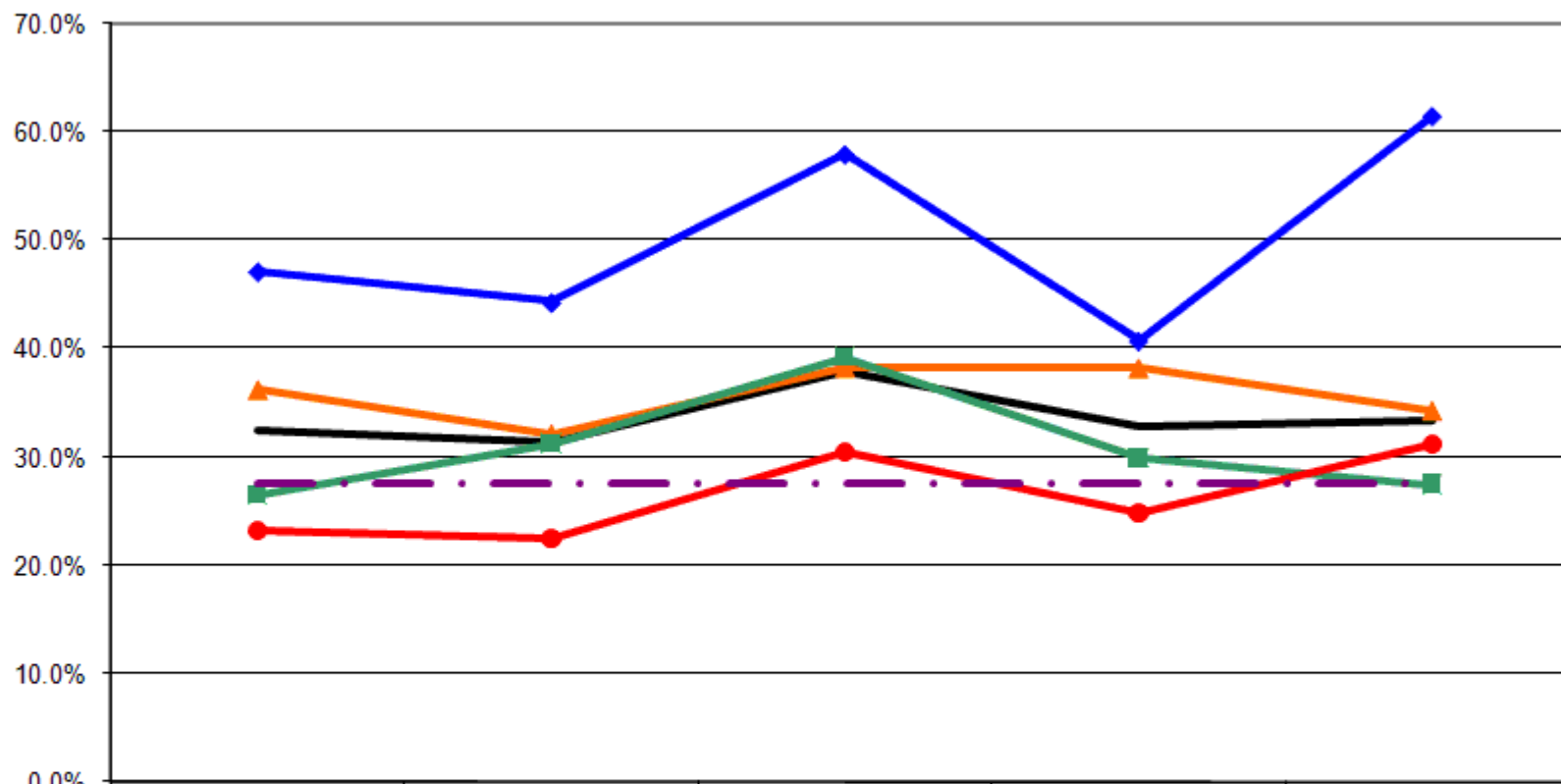
Told Ever Had Any Form of Arthritis By Income



	2001	2003	2005	2007	2009
Total	32.4%	31.3%	37.9%	32.9%	33.4%
< \$15K	46.5%	45.5%	57.3%	43.8%	40.4%
\$15-25K	35.1%	33.3%	35.8%	30.4%	34.4%
\$25-50K	31.8%	28.1%	33.2%	33.0%	40.6%
\$50K+	21.8%	21.9%	33.7%	29.1%	27.1%
US Total Rate*					27.5%

*Source: 2007 CDC BRFSS

Told Ever Had Any Form of Arthritis By Education



	2001	2003	2005	2007	2009
— Total	32.4%	31.3%	37.9%	32.9%	33.4%
—◆— <HS	47.1%	44.3%	57.9%	40.7%	61.4%
—▲— HS or GED	36.2%	32.1%	38.3%	38.2%	34.3%
—■— Some College	26.5%	31.3%	39.2%	29.9%	27.5%
—●— College Degree +	23.3%	22.6%	30.5%	24.8%	31.2%
- - - US Total Rate*					27.5%

*Source: 2007 CDC BRFSS

Interview Year 2001

		Have you EVER been told that you have some form of arthritis?	
		Yes	No
Total		32.4%	67.6%
Gender	Male	23.4%	76.6%
	Female	39.7%	60.3%
Age	18 - 24	5.3%	94.7%
	25 - 34	10.6%	89.4%
	35 - 44	15.2%	84.8%
	45 - 54	31.9%	68.1%
	55 - 64	45.4%	54.6%
	65+	60.3%	39.7%
Employed	Yes	14.5%	85.5%
	No	55.6%	44.4%
Income	< \$15K	46.5%	53.5%
	\$15-25K	35.1%	64.9%
	\$25-50K	31.8%	68.2%
	\$50K +	21.8%	78.2%
Education	Less than High School	47.1%	52.9%
	High School Diploma or GED	36.2%	63.8%
	Some College/Technical	26.5%	73.5%
	College Degree or Higher	23.3%	76.7%

Interview Year 2003

		Have you EVER been told that you have some form of arthritis?	
		Yes	No
Total		31.3%	68.7%
Gender	Male	25.5%	74.5%
	Female	36.8%	63.2%
Age	18 - 24	6.2%	93.8%
	25 - 34	10.4%	89.6%
	35 - 44	21.3%	78.7%
	45 - 54	30.8%	69.2%
	55 - 64	46.3%	53.7%
	65+	59.0%	41.0%
Employed	Yes	19.3%	80.7%
	No	50.6%	49.4%
Income	< \$15K	45.5%	54.5%
	\$15-25K	33.3%	66.7%
	\$25-50K	28.1%	71.9%
	\$50K +	21.9%	78.1%
Education	Less than High School	44.3%	55.7%
	High School Diploma or GED	32.1%	67.9%
	Some College/Technical	31.3%	68.8%
	College Degree or Higher	22.6%	77.4%

Interview Year 2005

		Have you EVER been told that you have some form of arthritis?	
		Yes	No
Total		37.9%	62.1%
Gender	Male	36.0%	64.0%
	Female	39.0%	61.0%
Age	18 - 24	10.0%	90.0%
	25 - 34	12.9%	87.1%
	35 - 44	19.2%	80.8%
	45 - 54	44.4%	55.6%
	55 - 64	51.0%	49.0%
	65+	56.1%	43.9%
Employed	Yes	26.0%	74.0%
	No	52.6%	47.4%
Income	< \$15K	57.3%	42.7%
	\$15-25K	35.8%	64.2%
	\$25-50K	33.2%	66.8%
	\$50K +	33.7%	66.3%
Education	Less than High School	57.9%	42.1%
	High School Diploma or GED	38.3%	61.7%
	Some College/Technical	39.2%	60.8%
	College Degree or Higher	30.5%	69.5%

Interview Year 2007

		Have you EVER been told that you have some form of arthritis?	
		Yes	No
Total		32.9%	67.1%
Gender	Male	30.0%	70.0%
	Female	35.6%	64.4%
Age	18 - 24	5.7%	94.3%
	25 - 34	4.3%	95.7%
	35 - 44	18.0%	82.0%
	45 - 54	33.1%	66.9%
	55 - 64	44.6%	55.4%
	65+	68.5%	31.5%
Employed	Yes	20.7%	79.3%
	No	58.2%	41.8%
Income	< \$15K	43.8%	56.2%
	\$15-25K	30.4%	69.6%
	\$25-50K	33.0%	67.0%
	\$50K +	29.1%	70.9%
Education	Less than High School	40.7%	59.3%
	High School Diploma or GED	38.2%	61.8%
	Some College/Technical	29.9%	70.1%
	College Degree or Higher	24.8%	75.2%

Interview Year 2009

		Have you EVER been told that you have some form of arthritis?	
		Yes	No
Total		33.4%	66.6%
Gender	Male	29.1%	70.9%
	Female	37.1%	62.9%
Age	18 - 24	4.8%	95.2%
	25 - 34	4.8%	95.2%
	35 - 44	16.3%	83.7%
	45 - 54	40.8%	59.2%
	55 - 64	55.2%	44.8%
	65+	59.1%	40.9%
Employed	Yes	19.7%	80.3%
	No	48.1%	51.9%
Income	< \$15K	40.4%	59.6%
	\$15-25K	34.4%	65.6%
	\$25-50K	40.6%	59.4%
	\$50K +	27.1%	72.9%
Education	Less than High School	61.4%	38.6%
	High School Diploma or GED	34.3%	65.7%
	Some College/Technical	27.5%	72.5%
	College Degree or Higher	31.2%	68.8%

			Have you EVER been told that you have some form of arthritis?	
			Yes	No
Gender	2001	Male	23.4%	76.6%
		Female	39.7%	60.3%
	2003	Male	25.5%	74.5%
		Female	36.8%	63.2%
	2005	Male	36.0%	64.0%
		Female	39.0%	61.0%
	2007	Male	30.0%	70.0%
		Female	35.6%	64.4%
	2009	Male	29.1%	70.9%
		Female	37.1%	62.9%

			Have you EVER been told that you have some form of arthritis?	
			Yes	No
Age	2001	18 - 24	5.3%	94.7%
		25 - 34	10.6%	89.4%
		35 - 44	15.2%	84.8%
		45 - 54	31.9%	68.1%
		55 - 64	45.4%	54.6%
		65+	60.3%	39.7%
	2003	18 - 24	6.2%	93.8%
		25 - 34	10.4%	89.6%
		35 - 44	21.3%	78.7%
		45 - 54	30.8%	69.2%
		55 - 64	46.3%	53.7%
		65+	59.0%	41.0%
	2005	18 - 24	10.0%	90.0%
		25 - 34	12.9%	87.1%
		35 - 44	19.2%	80.8%
		45 - 54	44.4%	55.6%
		55 - 64	51.0%	49.0%
		65+	56.1%	43.9%
	2007	18 - 24	5.7%	94.3%
		25 - 34	4.3%	95.7%
		35 - 44	18.0%	82.0%
		45 - 54	33.1%	66.9%
		55 - 64	44.6%	55.4%
		65+	68.5%	31.5%
2009	18 - 24	4.8%	95.2%	
	25 - 34	4.8%	95.2%	
	35 - 44	16.3%	83.7%	
	45 - 54	40.8%	59.2%	
	55 - 64	55.2%	44.8%	
	65+	59.1%	40.9%	

			Have you EVER been told that you have some form of arthritis?	
			Yes	No
Employment Status	2001	Employed	14.5%	85.5%
		Not Employed	55.6%	44.4%
	2003	Employed	19.3%	80.7%
		Not Employed	50.6%	49.4%
	2005	Employed	26.0%	74.0%
		Not Employed	52.6%	47.4%
	2007	Employed	20.7%	79.3%
		Not Employed	58.2%	41.8%
	2009	Employed	19.7%	80.3%
		Not Employed	48.1%	51.9%

			Have you EVER been told that you have some form of arthritis?	
			Yes	No
Income Level	2001	< \$15K	46.5%	53.5%
		\$15-25K	35.1%	64.9%
		\$25-50K	31.8%	68.2%
		\$50K +	21.8%	78.2%
	2003	< \$15K	45.5%	54.5%
		\$15-25K	33.3%	66.7%
		\$25-50K	28.1%	71.9%
		\$50K +	21.9%	78.1%
	2005	< \$15K	57.3%	42.7%
		\$15-25K	35.8%	64.2%
		\$25-50K	33.2%	66.8%
		\$50K +	33.7%	66.3%
	2007	< \$15K	43.8%	56.2%
		\$15-25K	30.4%	69.6%
		\$25-50K	33.0%	67.0%
		\$50K +	29.1%	70.9%
2009	< \$15K	40.4%	59.6%	
	\$15-25K	34.4%	65.6%	
	\$25-50K	40.6%	59.4%	
	\$50K +	27.1%	72.9%	

			Have you EVER been told that you have some form of arthritis?	
			Yes	No
Education Level	2001	Less than High School	47.1%	52.9%
		High School Diploma or GED	36.2%	63.8%
		Some College/Technical	26.5%	73.5%
		College Degree or Higher	23.3%	76.7%
	2003	Less than High School	44.3%	55.7%
		High School Diploma or GED	32.1%	67.9%
		Some College/Technical	31.3%	68.8%
		College Degree or Higher	22.6%	77.4%
	2005	Less than High School	57.9%	42.1%
		High School Diploma or GED	38.3%	61.7%
		Some College/Technical	39.2%	60.8%
		College Degree or Higher	30.5%	69.5%
	2007	Less than High School	40.7%	59.3%
		High School Diploma or GED	38.2%	61.8%
		Some College/Technical	29.9%	70.1%
		College Degree or Higher	24.8%	75.2%
2009	Less than High School	61.4%	38.6%	
	High School Diploma or GED	34.3%	65.7%	
	Some College/Technical	27.5%	72.5%	
	College Degree or Higher	31.2%	68.8%	