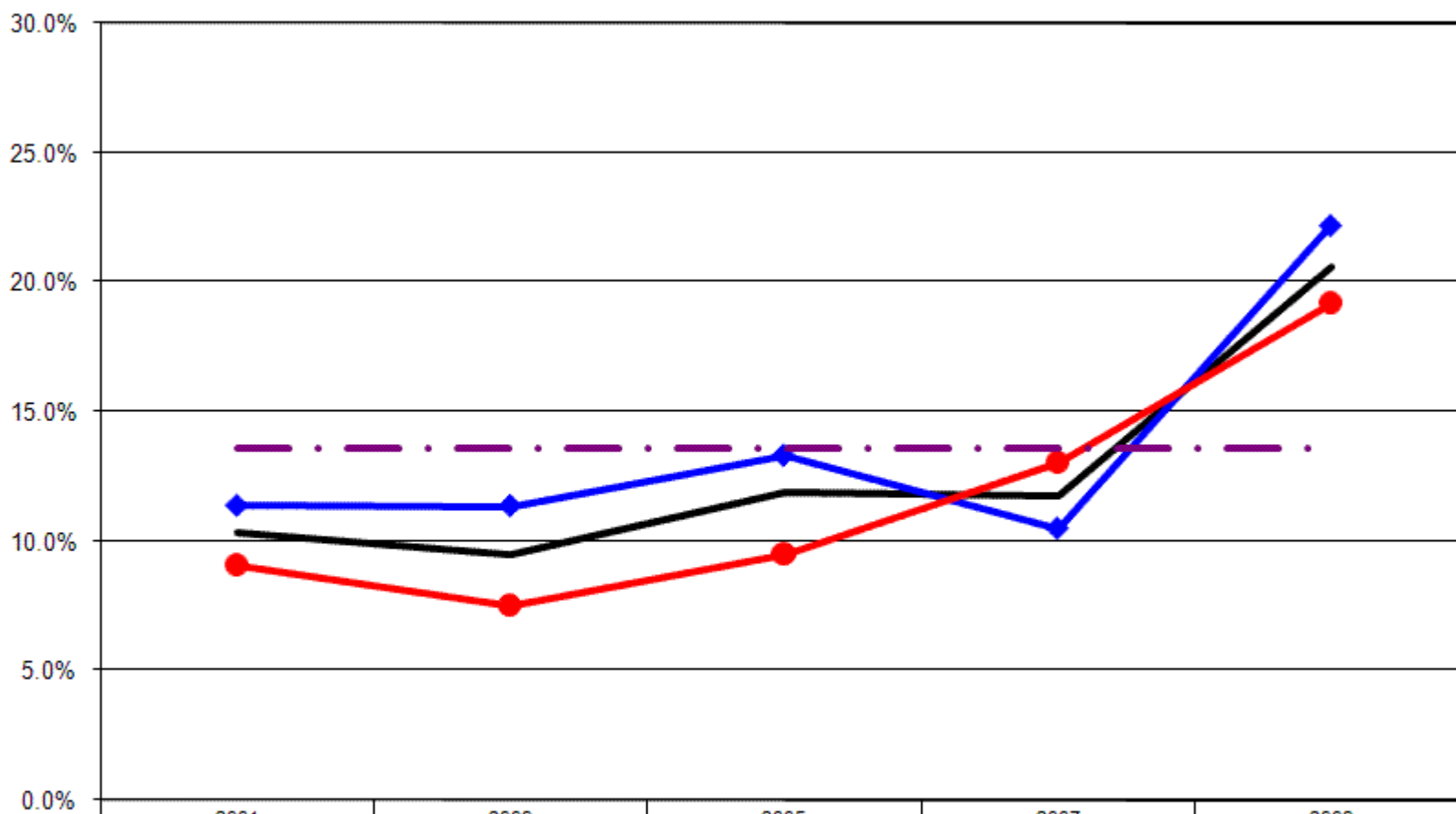


# 12 Year Review Asthma

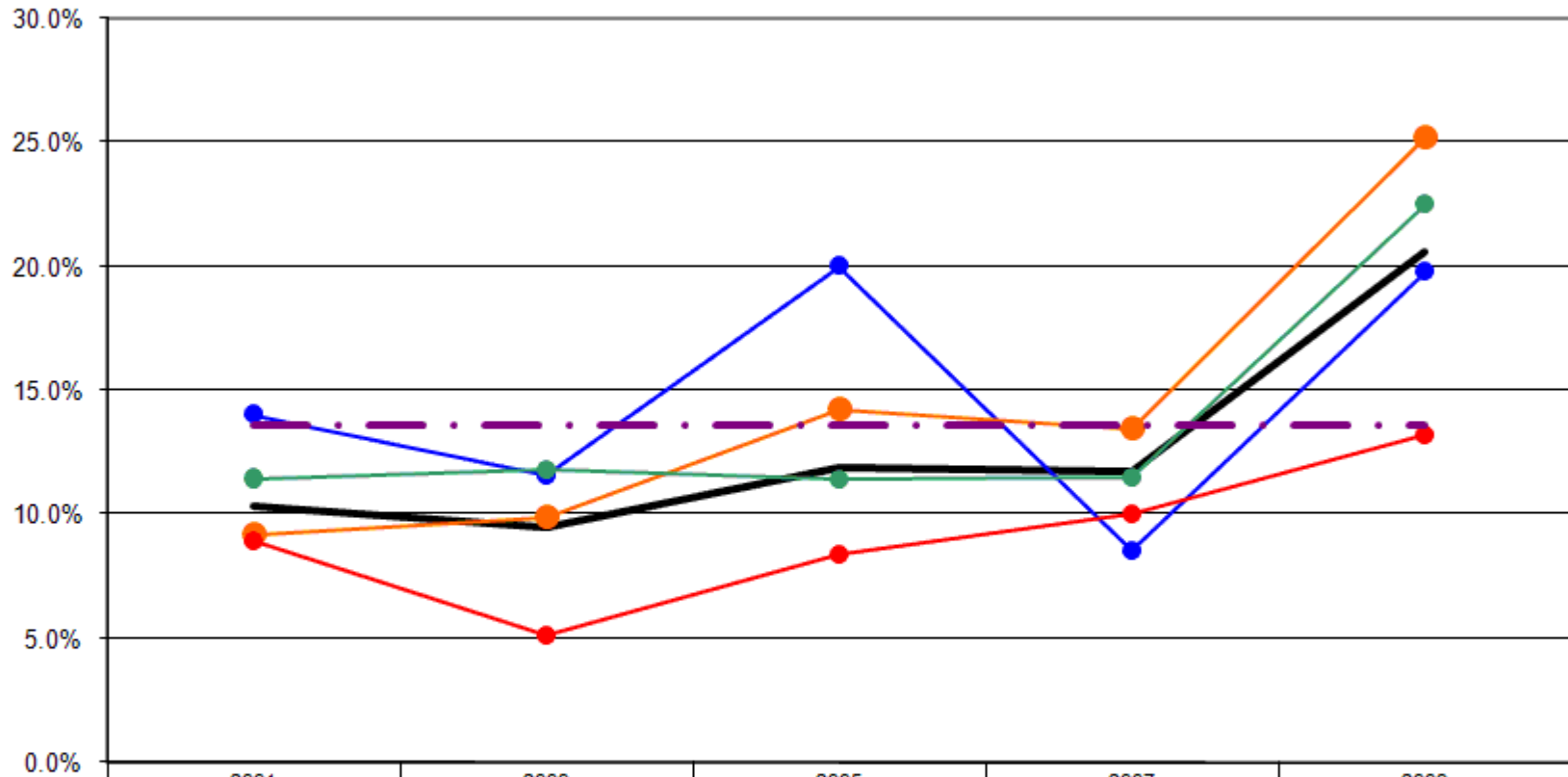
## Told Ever Had Asthma By Gender



	2001	2003	2005	2007	2009
— Total	10.4%	9.5%	11.9%	11.7%	20.6%
—◆ Male	11.4%	11.4%	13.3%	10.5%	22.2%
—● Female	9.1%	7.5%	9.5%	13.1%	19.2%
-.-.- US Total Rate*					13.6%

\*Source: 2008 CDC BRFSS

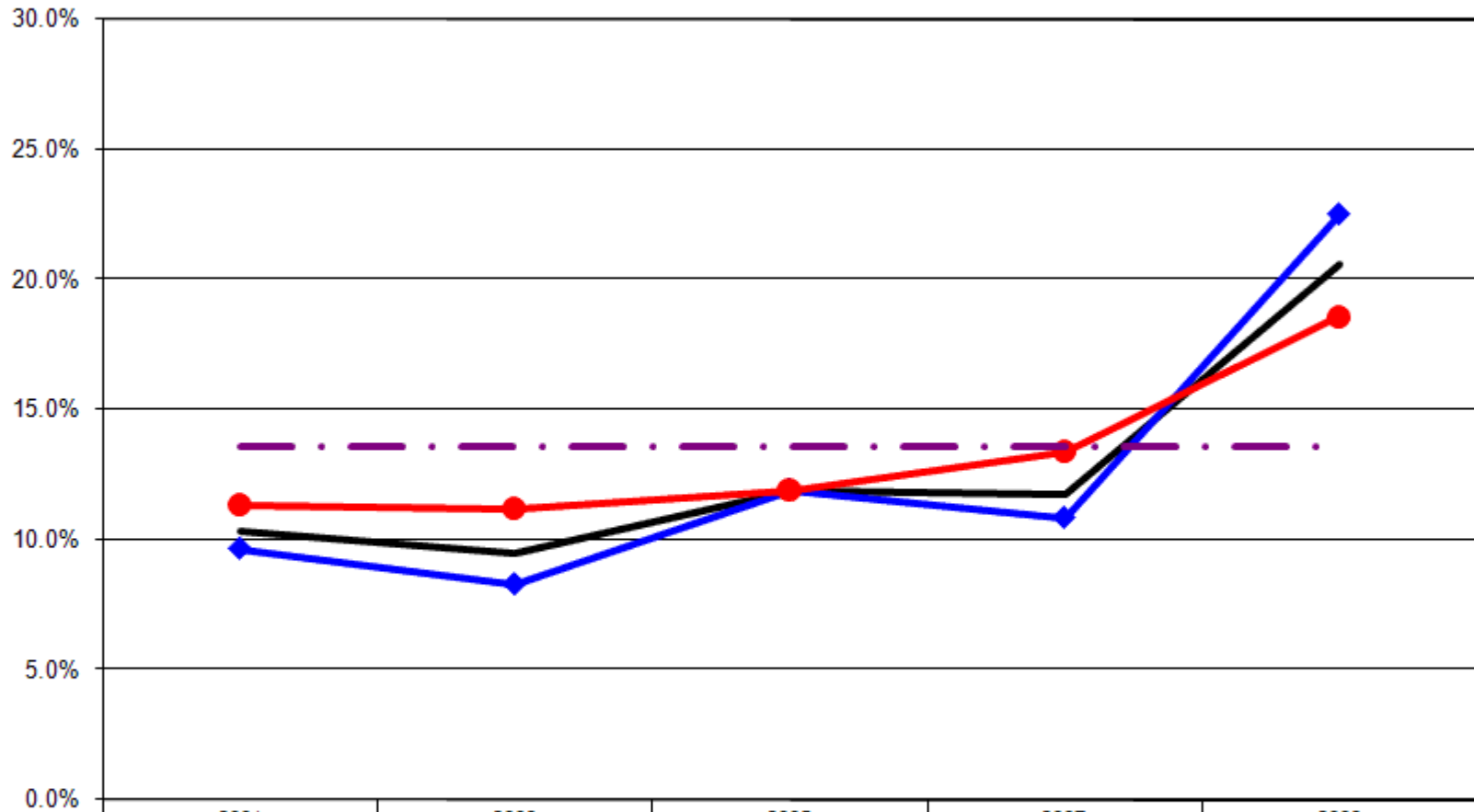
### Told Ever Had Asthma By Age



	2001	2003	2005	2007	2009
— Total	10.4%	9.5%	11.9%	11.7%	20.6%
—●— 18-24	14.0%	11.6%	20.0%	8.6%	19.8%
—●— 25-44	9.2%	9.9%	14.3%	13.5%	25.2%
—●— 45-64	11.4%	11.8%	11.4%	11.5%	22.5%
—●— 65+	8.9%	5.1%	8.4%	10.0%	13.2%
- - - - - US Total Rate*					13.6%

\*Source: 2008 CDC BRFSS

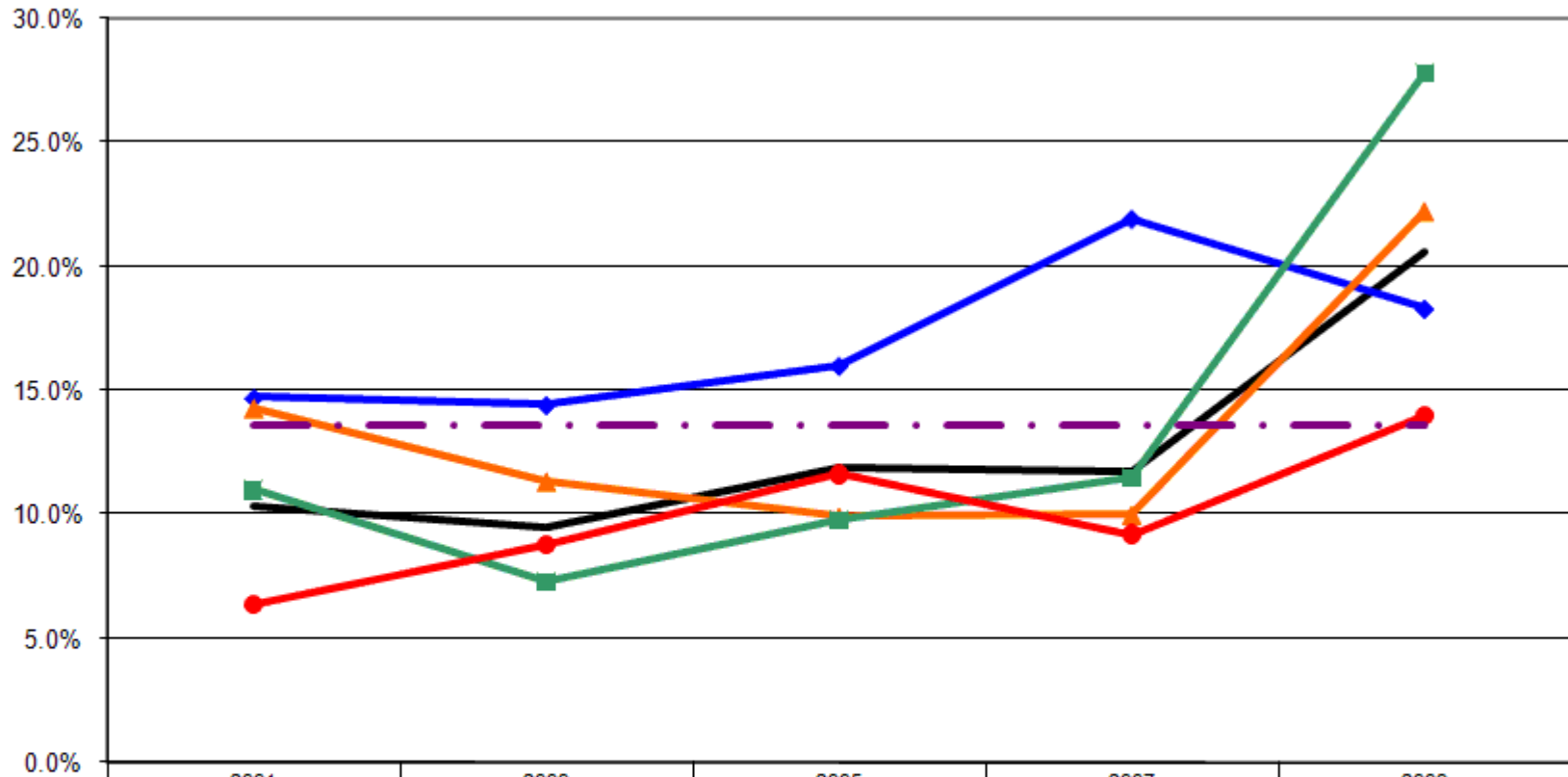
### Told Ever Had Asthma By Employment Status



	2001	2003	2005	2007	2009
— Total	10.4%	9.5%	11.9%	11.7%	20.6%
—◆— Employed	9.7%	8.3%	11.9%	10.8%	22.5%
—●— Not Employed	11.3%	11.2%	11.9%	13.4%	18.6%
-.-.- US Total Rate*					13.6%

\*Source: 2008 CDC BRFSS

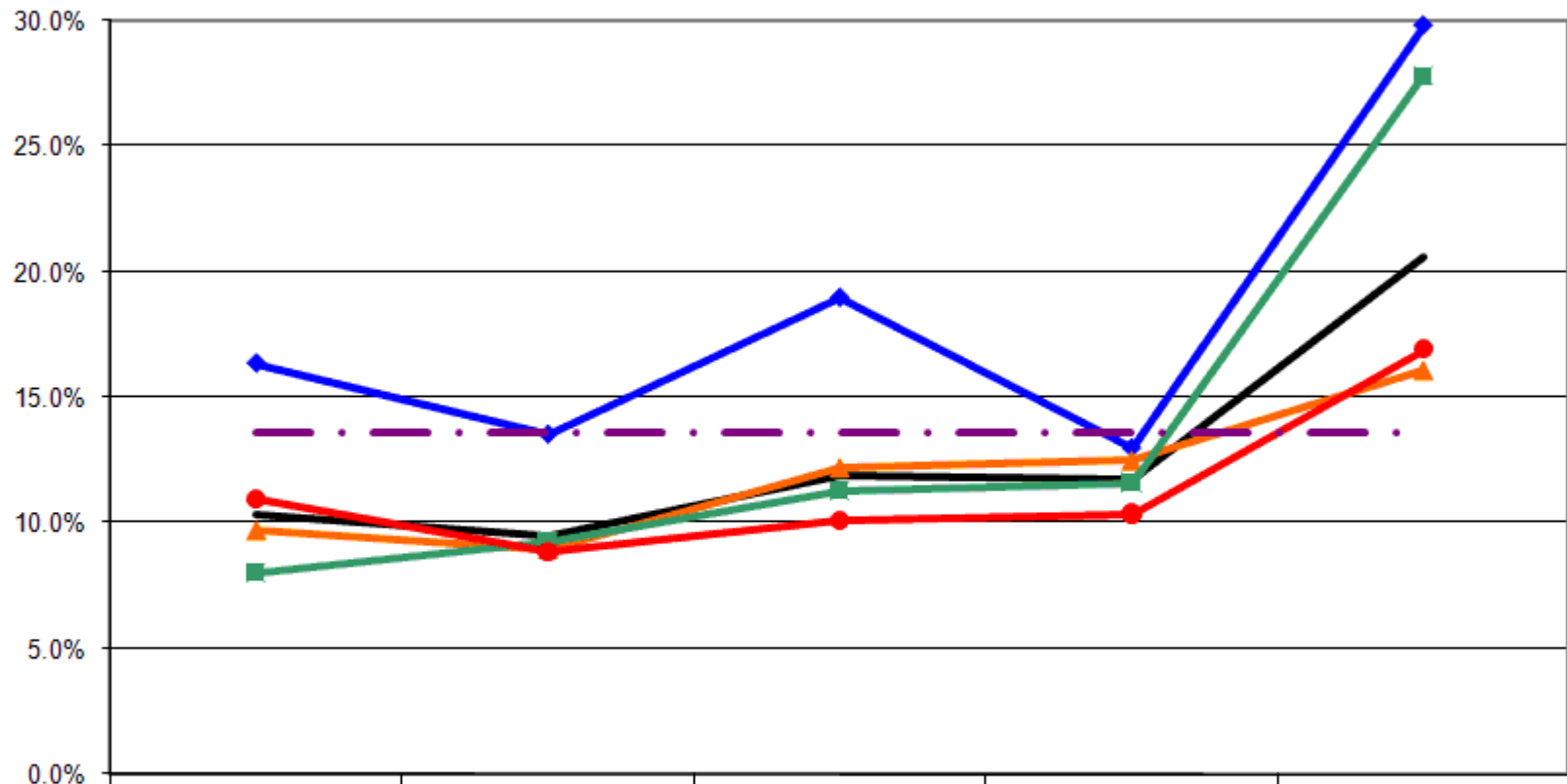
### Told Ever Had Asthma By Income



	2001	2003	2005	2007	2009
— Total	10.4%	9.5%	11.9%	11.7%	20.6%
—◆— <\$15K	14.7%	14.4%	16.0%	21.9%	18.3%
—▲— \$15-25K	14.3%	11.3%	9.9%	10.0%	22.2%
—■— \$25-50K	11.0%	7.3%	9.8%	11.5%	27.8%
—●— \$50K+	6.4%	8.8%	11.6%	9.2%	14.0%
-.-.- US Total Rate*					13.6%

\*Source: 2008 CDC BRFSS

### Told Ever Had Asthma By Education



	2001	2003	2005	2007	2009
— Total	10.4%	9.5%	11.9%	11.7%	20.6%
—◆— <HS	16.3%	13.5%	19.0%	13.0%	29.8%
—▲— HS or GED	9.7%	9.0%	12.2%	12.5%	16.1%
—■— Some College	8.0%	9.2%	11.3%	11.6%	27.8%
—●— College Degree +	11.0%	8.9%	10.1%	10.4%	16.9%
-.-.- US Total Rate*					13.6%

\*Source: 2008 CDC BRFSS

Interview Year 2001

		Have you ever been told that you had asthma?	
		Yes	No
<b>Total</b>		<b>10.4%</b>	<b>89.6%</b>
Gender	Male	9.1%	90.9%
	Female	11.4%	88.6%
Age	18 - 24	14.0%	86.0%
	25 - 34	7.6%	92.4%
	35 - 44	10.3%	89.7%
	45 - 54	12.3%	87.7%
	55 - 64	10.2%	89.8%
	65+	8.9%	91.1%
Employed	Yes	9.7%	90.3%
	No	11.3%	88.7%
Income	< \$15K	14.7%	85.3%
	\$15-25K	14.3%	85.7%
	\$25-50K	11.0%	89.0%
	\$50K +	6.4%	93.6%
Education	Less than High School	16.3%	83.7%
	High School Diploma or GED	9.7%	90.3%
	Some College/Technical	8.0%	92.0%
	College Degree or Higher	11.0%	89.0%

Interview Year 2003

		Have you ever been told that you had asthma?	
		Yes	No
<b>Total</b>		<b>9.5%</b>	<b>90.5%</b>
Gender	Male	7.5%	92.5%
	Female	11.4%	88.6%
Age	18 - 24	11.6%	88.4%
	25 - 34	8.9%	91.1%
	35 - 44	10.8%	89.2%
	45 - 54	16.4%	83.6%
	55 - 64	5.9%	94.1%
	65+	5.1%	94.9%
Employed	Yes	8.3%	91.7%
	No	11.2%	88.8%
Income	< \$15K	14.4%	85.6%
	\$15-25K	11.3%	88.7%
	\$25-50K	7.3%	92.7%
	\$50K +	8.8%	91.2%
Education	Less than High School	13.5%	86.5%
	High School Diploma or GED	9.0%	91.0%
	Some College/Technical	9.2%	90.8%
	College Degree or Higher	8.9%	91.1%

Interview Year 2005

		Have you ever been told that you had asthma?	
		Yes	No
<b>Total</b>		<b>11.9%</b>	<b>88.1%</b>
Gender	Male	9.5%	90.5%
	Female	13.3%	86.7%
Age	18 - 24	20.0%	80.0%
	25 - 34	17.2%	82.8%
	35 - 44	12.2%	87.8%
	45 - 54	10.9%	89.1%
	55 - 64	12.0%	88.0%
	65+	8.4%	91.6%
Employed	Yes	11.9%	88.1%
	No	11.9%	88.1%
Income	< \$15K	16.0%	84.0%
	\$15-25K	9.9%	90.1%
	\$25-50K	9.8%	90.2%
	\$50K +	11.6%	88.4%
Education	Less than High School	19.0%	81.0%
	High School Diploma or GED	12.2%	87.8%
	Some College/Technical	11.3%	88.7%
	College Degree or Higher	10.1%	89.9%

Interview Year 2007

		Have you ever been told that you had asthma?	
		Yes	No
<b>Total</b>		<b>11.7%</b>	<b>88.3%</b>
Gender	Male	13.1%	86.9%
	Female	10.5%	89.5%
Age	18 - 24	8.6%	91.4%
	25 - 34	17.1%	82.9%
	35 - 44	10.2%	89.8%
	45 - 54	9.7%	90.3%
	55 - 64	13.4%	86.6%
	65+	10.0%	90.0%
Employed	Yes	10.8%	89.2%
	No	13.4%	86.6%
Income	< \$15K	21.9%	78.1%
	\$15-25K	10.0%	90.0%
	\$25-50K	11.5%	88.5%
	\$50K +	9.2%	90.8%
Education	Less than High School	13.0%	87.0%
	High School Diploma or GED	12.5%	87.5%
	Some College/Technical	11.6%	88.4%
	College Degree or Higher	10.4%	89.6%

Interview Year 2009

		Have you ever been told that you had asthma?	
		Yes	No
<b>Total</b>		<b>20.6%</b>	<b>79.4%</b>
Gender	Male	22.2%	77.8%
	Female	19.2%	80.8%
Age	18 - 24	19.8%	80.2%
	25 - 34	29.7%	70.3%
	35 - 44	20.7%	79.3%
	45 - 54	20.0%	80.0%
	55 - 64	25.2%	74.8%
	65+	13.2%	86.8%
Employed	Yes	22.5%	77.5%
	No	18.6%	81.4%
Income	< \$15K	18.3%	81.7%
	\$15-25K	22.2%	77.8%
	\$25-50K	27.8%	72.2%
	\$50K +	14.0%	86.0%
Education	Less than High School	29.8%	70.2%
	High School Diploma or GED	16.1%	83.9%
	Some College/Technical	27.8%	72.2%
	College Degree or Higher	16.9%	83.1%

			Have you ever been told that you had asthma?	
			Yes	No
Gender	2001	Male	9.1%	90.9%
		Female	11.4%	88.6%
	2003	Male	7.5%	92.5%
		Female	11.4%	88.6%
	2005	Male	9.5%	90.5%
		Female	13.3%	86.7%
	2007	Male	13.1%	86.9%
		Female	10.5%	89.5%
	2009	Male	22.2%	77.8%
		Female	19.2%	80.8%

			Have you ever been told that you had asthma?	
			Yes	No
Age	2001	18 - 24	14.0%	86.0%
		25 - 34	7.6%	92.4%
		35 - 44	10.3%	89.7%
		45 - 54	12.3%	87.7%
		55 - 64	10.2%	89.8%
		65+	8.9%	91.1%
	2003	18 - 24	11.6%	88.4%
		25 - 34	8.9%	91.1%
		35 - 44	10.8%	89.2%
		45 - 54	16.4%	83.6%
		55 - 64	5.9%	94.1%
		65+	5.1%	94.9%
	2005	18 - 24	20.0%	80.0%
		25 - 34	17.2%	82.8%
		35 - 44	12.2%	87.8%
		45 - 54	10.9%	89.1%
		55 - 64	12.0%	88.0%
		65+	8.4%	91.6%
	2007	18 - 24	8.6%	91.4%
		25 - 34	17.1%	82.9%
		35 - 44	10.2%	89.8%
		45 - 54	9.7%	90.3%
		55 - 64	13.4%	86.6%
		65+	10.0%	90.0%
2009	18 - 24	19.8%	80.2%	
	25 - 34	29.7%	70.3%	
	35 - 44	20.7%	79.3%	
	45 - 54	20.0%	80.0%	
	55 - 64	25.2%	74.8%	
	65+	13.2%	86.8%	

			Have you ever been told that you had asthma?	
			Yes	No
Employment Status	2001	Employed	9.7%	90.3%
		Not Employed	11.3%	88.7%
	2003	Employed	8.3%	91.7%
		Not Employed	11.2%	88.8%
	2005	Employed	11.9%	88.1%
		Not Employed	11.9%	88.1%
	2007	Employed	10.8%	89.2%
		Not Employed	13.4%	86.6%
	2009	Employed	22.5%	77.5%
		Not Employed	18.6%	81.4%

			Have you ever been told that you had asthma?	
			Yes	No
Income	2001	< \$15K	14.7%	85.3%
		\$15-25K	14.3%	85.7%
		\$25-50K	11.0%	89.0%
		\$50K +	6.4%	93.6%
	2003	< \$15K	14.4%	85.6%
		\$15-25K	11.3%	88.7%
		\$25-50K	7.3%	92.7%
		\$50K +	8.8%	91.2%
	2005	< \$15K	16.0%	84.0%
		\$15-25K	9.9%	90.1%
		\$25-50K	9.8%	90.2%
		\$50K +	11.6%	88.4%
	2007	< \$15K	21.9%	78.1%
		\$15-25K	10.0%	90.0%
		\$25-50K	11.5%	88.5%
		\$50K +	9.2%	90.8%
2009	< \$15K	18.3%	81.7%	
	\$15-25K	22.2%	77.8%	
	\$25-50K	27.8%	72.2%	
	\$50K +	14.0%	86.0%	

			Have you ever been told that you had asthma?	
			Yes	No
Education Level	2001	Less than High School	16.3%	83.7%
		High School Diploma or GED	9.7%	90.3%
		Some College/Technical	8.0%	92.0%
		College Degree or Higher	11.0%	89.0%
	2003	Less than High School	13.5%	86.5%
		High School Diploma or GED	9.0%	91.0%
		Some College/Technical	9.2%	90.8%
		College Degree or Higher	8.9%	91.1%
	2005	Less than High School	19.0%	81.0%
		High School Diploma or GED	12.2%	87.8%
		Some College/Technical	11.3%	88.7%
		College Degree or Higher	10.1%	89.9%
	2007	Less than High School	13.0%	87.0%
		High School Diploma or GED	12.5%	87.5%
		Some College/Technical	11.6%	88.4%
		College Degree or Higher	10.4%	89.6%
2009	Less than High School	29.8%	70.2%	
	High School Diploma or GED	16.1%	83.9%	
	Some College/Technical	27.8%	72.2%	
	College Degree or Higher	16.9%	83.1%	