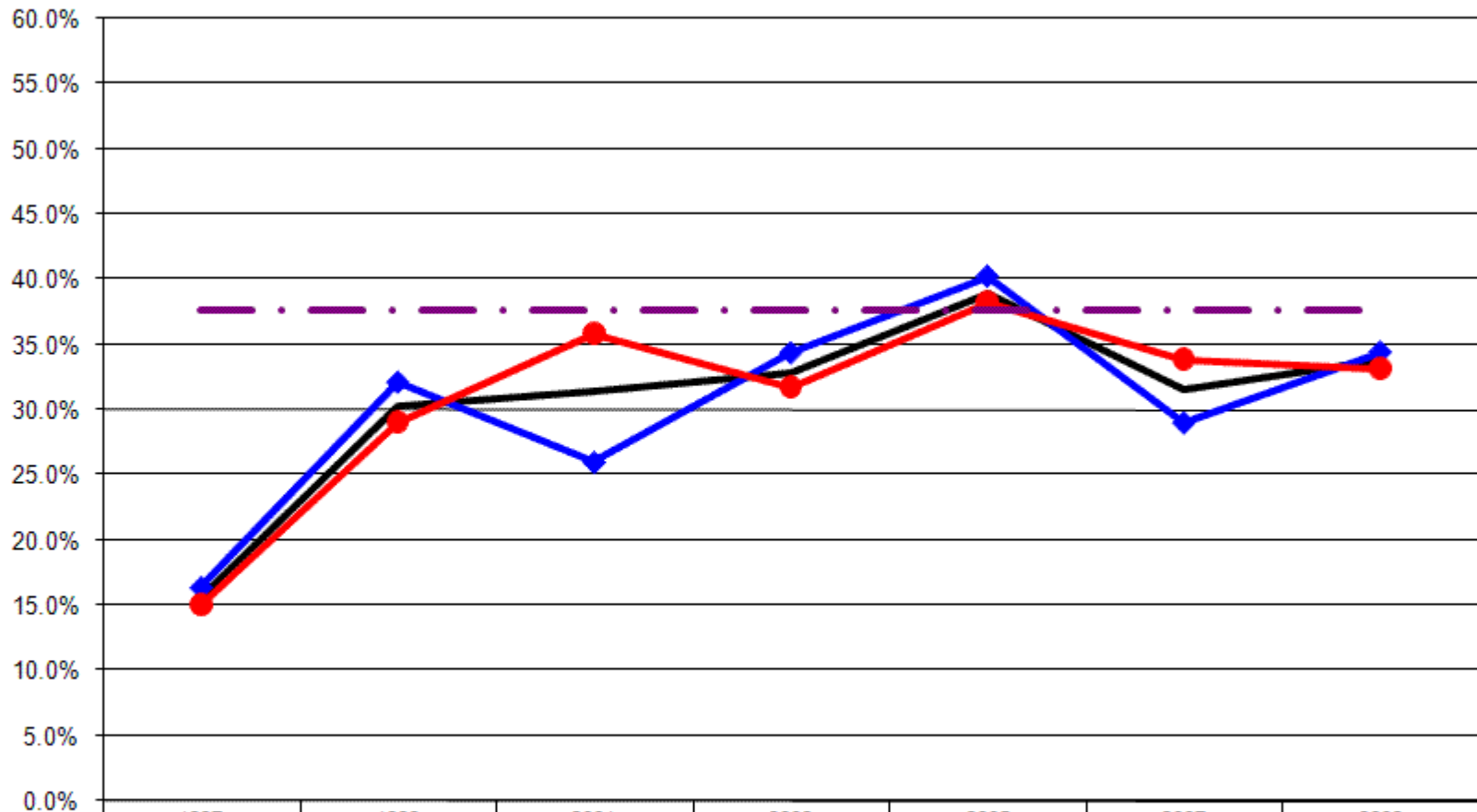


12 Year Review Blood Cholesterol

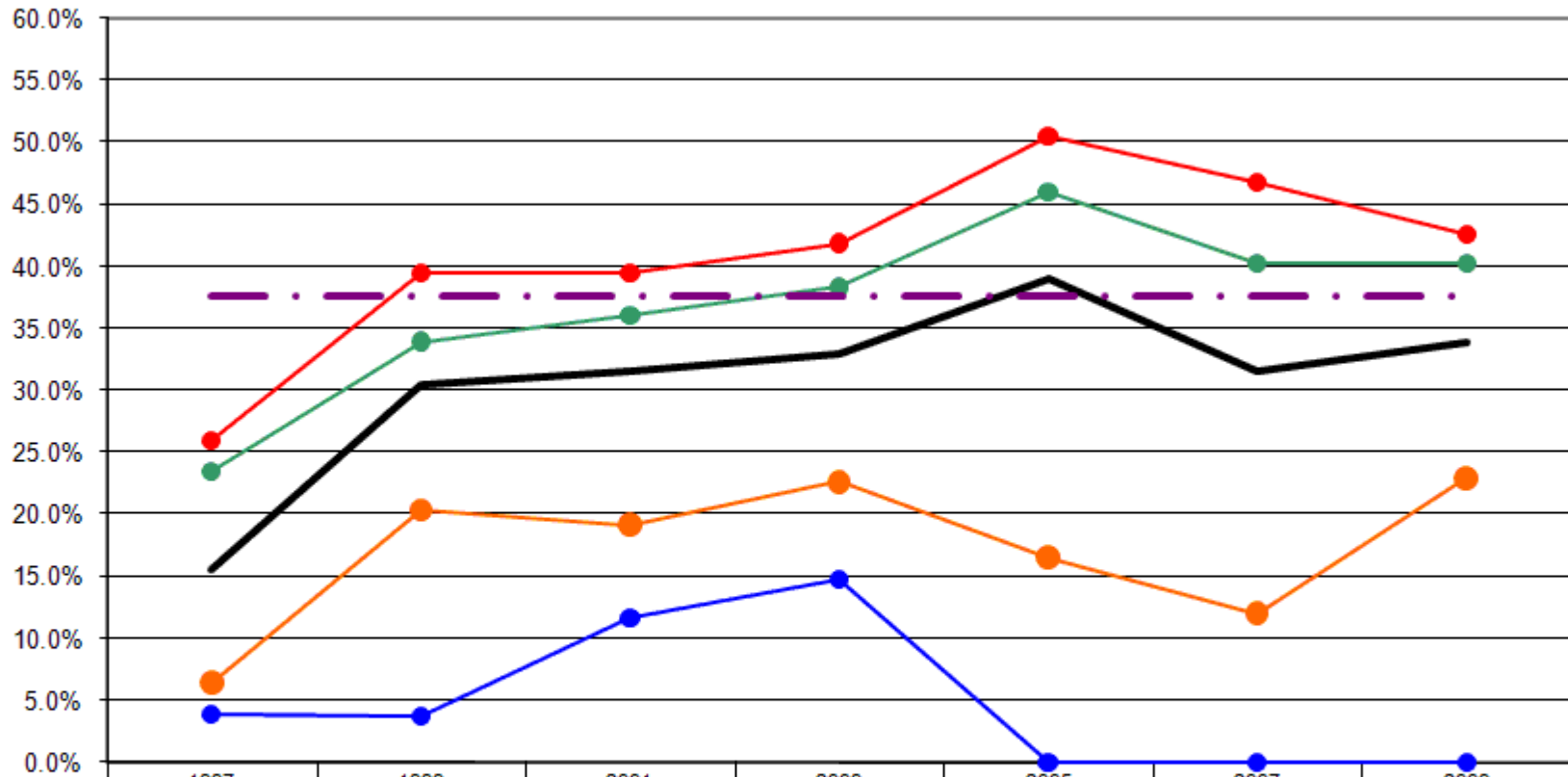
Had Blood Cholesterol Checked and Told High By Gender



	1997	1999	2001	2003	2005	2007	2009
— Total	15.6%	30.4%	31.5%	32.9%	39.0%	31.5%	33.8%
—◆ Male	16.4%	32.1%	26.0%	34.3%	40.2%	29.0%	34.4%
—● Female	15.1%	29.1%	35.9%	31.7%	38.3%	33.9%	33.2%
-.-.- US Total Rate*							37.6%

*Source: 2007 CDC BRFSS

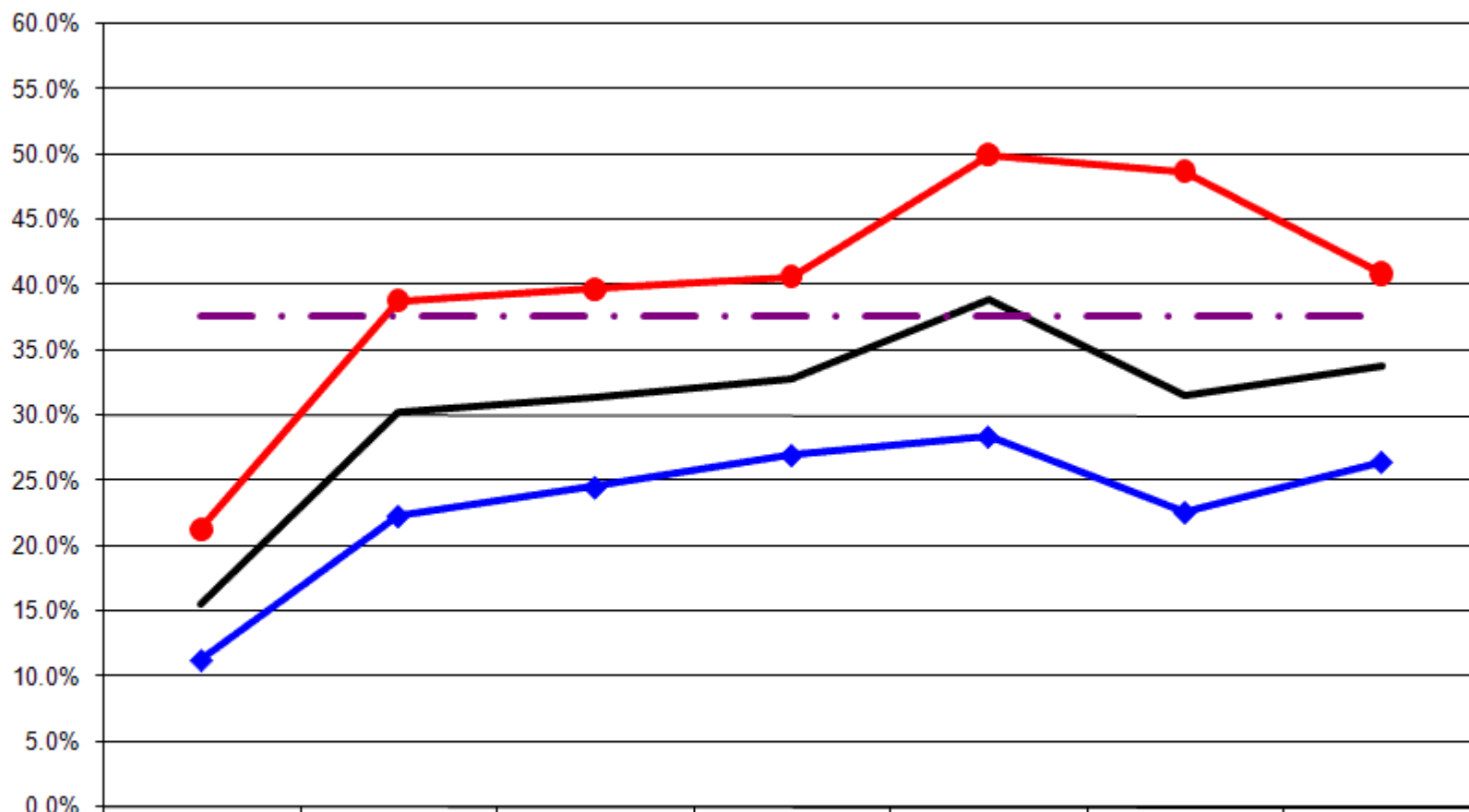
Had Blood Cholesterol Checked and Told High By Age



	1997	1999	2001	2003	2005	2007	2009
— Total	15.6%	30.4%	31.5%	32.9%	39.0%	31.5%	33.8%
● 18-24	3.8%	3.7%	11.8%	14.8%	0.0%	0.0%	0.0%
● 25-44	6.4%	20.4%	19.2%	22.6%	16.6%	12.1%	23.0%
● 45-64	23.5%	34.0%	36.0%	38.3%	46.0%	40.2%	40.3%
● 65+	25.9%	39.4%	39.5%	41.8%	50.5%	46.7%	42.6%
- - - US Total Rate*							37.6%

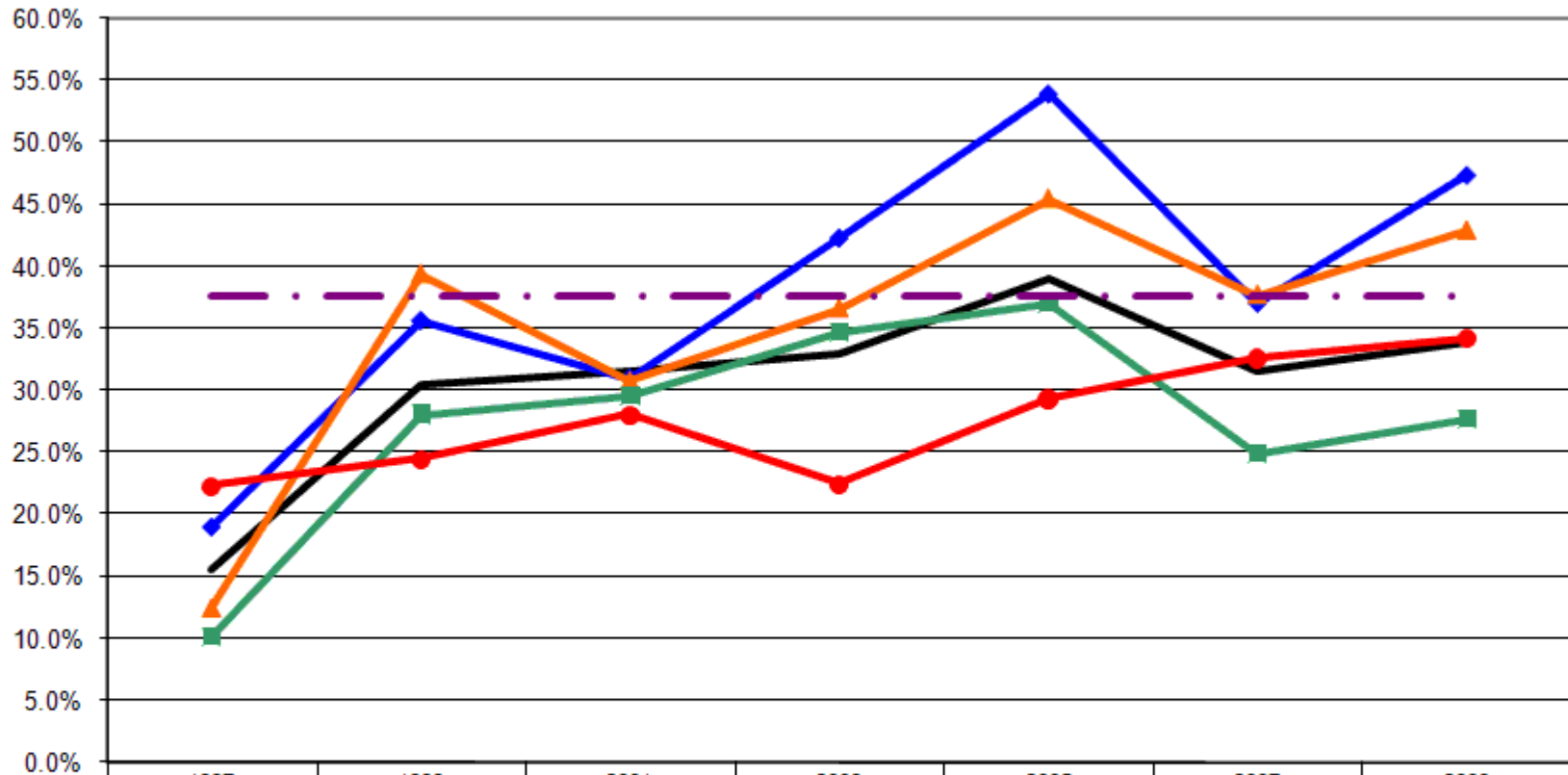
*Source: 2007 CDC BRFSS

Had Blood Cholesterol Checked and Told High By Employment Status



*Source: 2007 CDC BRFSS

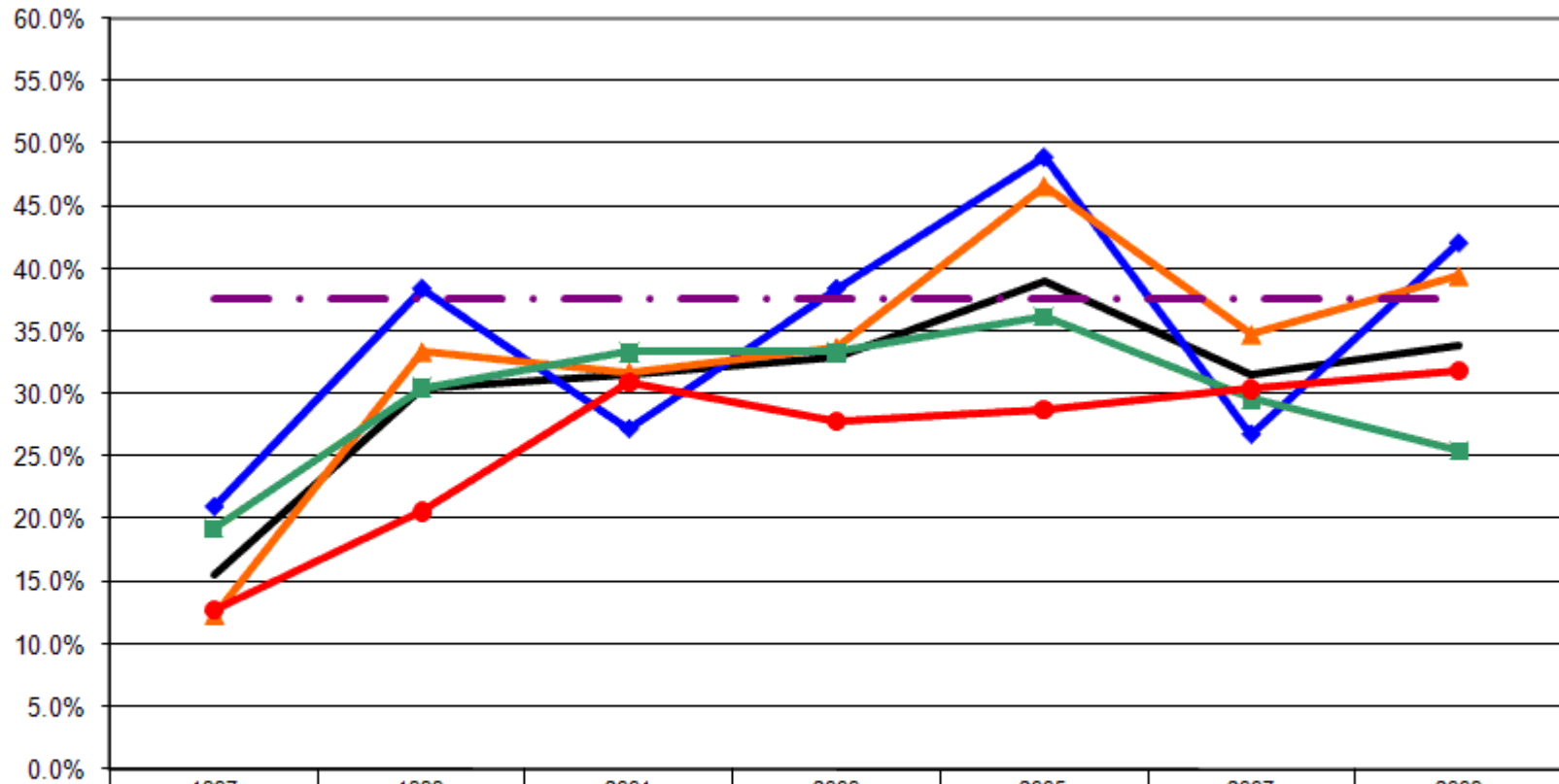
Had Blood Cholesterol Checked and Told High By Income



	1997	1999	2001	2003	2005	2007	2009
— Total	15.6%	30.4%	31.5%	32.9%	39.0%	31.5%	33.8%
—◆— <\$15K	18.9%	35.6%	31.0%	42.3%	54.0%	37.0%	47.4%
—▲— \$15-25K	12.5%	39.4%	30.8%	36.7%	45.5%	37.7%	42.9%
—■— \$25-50K	10.2%	28.1%	29.6%	34.8%	37.0%	24.9%	27.7%
—●— \$50K+	22.3%	24.5%	28.1%	22.5%	29.4%	32.6%	34.2%
- - - US Total Rate*							37.6%

*Source: 2007 CDC BRFSS

Had Blood Cholesterol Checked and Told High By Education



	1997	1999	2001	2003	2005	2007	2009
— Total	15.6%	30.4%	31.5%	32.9%	39.0%	31.5%	33.8%
—◆— <HS	21.1%	38.5%	27.3%	38.5%	48.9%	26.8%	42.1%
—▲— HS or GED	12.3%	33.3%	31.7%	33.7%	46.6%	34.7%	39.4%
—■— Some College	19.3%	30.5%	33.3%	33.3%	36.2%	29.6%	25.5%
—●— College Degree +	12.7%	20.6%	31.0%	27.9%	28.7%	30.4%	31.9%
-.-.- US Total Rate*							37.6%

*Source: 2007 CDC BRFSS

Interview Year 1997

		Have you ever been told that you have high blood cholesterol?	
		Yes	No
Total		15.6%	84.4%
Gender	Male	16.4%	83.6%
	Female	15.1%	84.9%
Age	18 - 24	3.8%	96.2%
	25 - 34	6.3%	93.8%
	35 - 44	6.6%	93.4%
	45 - 54	21.4%	78.6%
	55 - 64	25.9%	74.1%
	65+	25.9%	74.1%
Employed	Yes	11.3%	88.7%
	No	21.4%	78.6%
Income	< \$15K	18.9%	81.1%
	\$15-25K	12.5%	87.5%
	\$25-50K	10.2%	89.8%
	\$50K +	22.3%	77.7%
Education	Less than High School	21.1%	78.9%
	High School Diploma or GED	12.3%	87.7%
	Some College/Technical	19.3%	80.7%
	College Degree or Higher	12.7%	87.3%

Interview Year 1999

		Have you ever been told that you have high blood cholesterol?	
		Yes	No
Total		30.4%	69.6%
Gender	Male	32.1%	67.9%
	Female	29.1%	70.9%
Age	18 - 24	3.7%	96.3%
	25 - 34	14.3%	85.7%
	35 - 44	23.7%	76.3%
	45 - 54	26.6%	73.4%
	55 - 64	45.1%	54.9%
	65+	38.5%	61.5%
Employed	Yes	22.3%	77.7%
	No	38.9%	61.1%
Income	< \$15K	35.6%	64.4%
	\$15-25K	39.4%	60.6%
	\$25-50K	28.1%	71.9%
	\$50K +	24.5%	75.5%
Education	Less than High School	38.5%	61.5%
	High School Diploma or GED	33.3%	66.7%
	Some College/Technical	30.5%	69.5%
	College Degree or Higher	20.6%	79.4%

Interview Year 2001

		Have you ever been told that you have high blood cholesterol?	
		Yes	No
Total		31.5%	68.5%
Gender	Male	26.0%	74.0%
	Female	35.9%	64.1%
Age	18 - 24	11.8%	88.2%
	25 - 34	13.0%	87.0%
	35 - 44	21.9%	78.1%
	45 - 54	32.1%	67.9%
	55 - 64	41.9%	58.1%
	65+	39.5%	60.5%
Employed	Yes	24.5%	75.5%
	No	39.7%	60.3%
Income	< \$15K	31.0%	69.0%
	\$15-25K	30.8%	69.2%
	\$25-50K	29.6%	70.4%
	\$50K +	28.1%	71.9%
Education	Less than High School	27.3%	72.7%
	High School Diploma or GED	31.7%	68.3%
	Some College/Technical	33.3%	66.7%
	College Degree or Higher	31.0%	69.0%

Interview Year 2003

		Have you ever been told that you have high blood cholesterol?	
		Yes	No
Total		32.9%	67.1%
Gender	Male	34.3%	65.7%
	Female	31.7%	68.3%
Age	18 - 24	14.8%	85.2%
	25 - 34	17.2%	82.8%
	35 - 44	26.3%	73.7%
	45 - 54	33.0%	67.0%
	55 - 64	44.7%	55.3%
	65+	41.8%	58.2%
Employed	Yes	27.0%	73.0%
	No	40.7%	59.3%
Income	< \$15K	42.3%	57.7%
	\$15-25K	36.7%	63.3%
	\$25-50K	34.8%	65.2%
	\$50K +	22.5%	77.5%
Education	Less than High School	38.5%	61.5%
	High School Diploma or GED	33.7%	66.3%
	Some College/Technical	33.3%	66.7%
	College Degree or Higher	27.9%	72.1%

Interview Year 2005

		Have you ever been told that you have high blood cholesterol?	
		Yes	No
Total		39.0%	61.0%
Gender	Male	40.2%	59.8%
	Female	38.3%	61.7%
Age	18 - 24	0.0%	100.0%
	25 - 34	17.6%	82.4%
	35 - 44	16.0%	84.0%
	45 - 54	41.5%	58.5%
	55 - 64	51.1%	48.9%
	65+	50.5%	49.5%
Employed	Yes	28.4%	71.6%
	No	50.0%	50.0%
Income	< \$15K	54.0%	46.0%
	\$15-25K	45.5%	54.5%
	\$25-50K	37.0%	63.0%
	\$50K +	29.4%	70.6%
Education	Less than High School	48.9%	51.1%
	High School Diploma or GED	46.6%	53.4%
	Some College/Technical	36.2%	63.8%
	College Degree or Higher	28.7%	71.3%

Interview Year 2007

		Have you ever been told that you have high blood cholesterol?	
		Yes	No
Total		31.5%	68.5%
Gender	Male	29.0%	71.0%
	Female	33.9%	66.1%
Age	18 - 24	0.0%	100.0%
	25 - 34	6.4%	93.6%
	35 - 44	16.3%	83.7%
	45 - 54	37.6%	62.4%
	55 - 64	42.7%	57.3%
	65+	46.7%	53.3%
Employed	Yes	22.6%	77.4%
	No	48.7%	51.3%
Income	< \$15K	37.0%	63.0%
	\$15-25K	37.7%	62.3%
	\$25-50K	24.9%	75.1%
	\$50K +	32.6%	67.4%
Education	Less than High School	26.8%	73.2%
	High School Diploma or GED	34.7%	65.3%
	Some College/Technical	29.6%	70.4%
	College Degree or Higher	30.4%	69.6%

Interview Year 2009

		Have you ever been told that you have high blood cholesterol?	
		Yes	No
Total		33.8%	66.2%
Gender	Male	34.4%	65.6%
	Female	33.2%	66.8%
Age	18 - 24	0.0%	100.0%
	25 - 34	18.2%	81.8%
	35 - 44	26.7%	73.3%
	45 - 54	37.8%	62.2%
	55 - 64	42.7%	57.3%
	65+	42.6%	57.4%
Employed	Yes	26.5%	73.5%
	No	40.9%	59.1%
Income	< \$15K	47.4%	52.6%
	\$15-25K	42.9%	57.1%
	\$25-50K	27.7%	72.3%
	\$50K +	34.2%	65.8%
Education	Less than High School	42.1%	57.9%
	High School Diploma or GED	39.4%	60.6%
	Some College/Technical	25.5%	74.5%
	College Degree or Higher	31.9%	68.1%

			Have you ever been told that you have high blood cholesterol?	
			Yes	No
Gender	1997	Male	16.4%	83.6%
		Female	15.1%	84.9%
	1999	Male	32.1%	67.9%
		Female	29.1%	70.9%
	2001	Male	26.0%	74.0%
		Female	35.9%	64.1%
	2003	Male	34.3%	65.7%
		Female	31.7%	68.3%
	2005	Male	40.2%	59.8%
		Female	38.3%	61.7%
	2007	Male	29.0%	71.0%
		Female	33.9%	66.1%
	2009	Male	34.4%	65.6%
		Female	33.2%	66.8%

Have you ever been told that you
have high blood cholesterol?

			Yes	No
Income	1997	< \$15K	18.9%	81.1%
		\$15-25K	12.5%	87.5%
		\$25-50K	10.2%	89.8%
		\$50K +	22.3%	77.7%
	1999	< \$15K	35.6%	64.4%
		\$15-25K	39.4%	60.6%
		\$25-50K	28.1%	71.9%
		\$50K +	24.5%	75.5%
	2001	< \$15K	31.0%	69.0%
		\$15-25K	30.8%	69.2%
		\$25-50K	29.6%	70.4%
		\$50K +	28.1%	71.9%
	2003	< \$15K	42.3%	57.7%
		\$15-25K	36.7%	63.3%
		\$25-50K	34.8%	65.2%
		\$50K +	22.5%	77.5%
	2005	< \$15K	54.0%	46.0%
		\$15-25K	45.5%	54.5%
		\$25-50K	37.0%	63.0%
		\$50K +	29.4%	70.6%
	2007	< \$15K	37.0%	63.0%
		\$15-25K	37.7%	62.3%
		\$25-50K	24.9%	75.1%
		\$50K +	32.6%	67.4%
	2009	< \$15K	47.4%	52.6%
		\$15-25K	42.9%	57.1%
		\$25-50K	27.7%	72.3%
		\$50K +	34.2%	65.8%

			Have you ever been told that you have high blood cholesterol?	
			Yes	No
Age	1997	18 - 24	3.8%	96.2%
		25 - 34	6.3%	93.8%
		35 - 44	6.6%	93.4%
		45 - 54	21.4%	78.6%
		55 - 64	25.9%	74.1%
		65+	25.9%	74.1%
	1999	18 - 24	3.7%	96.3%
		25 - 34	14.3%	85.7%
		35 - 44	23.7%	76.3%
		45 - 54	26.6%	73.4%
		55 - 64	45.1%	54.9%
		65+	38.5%	61.5%
	2001	18 - 24	11.8%	88.2%
		25 - 34	13.0%	87.0%
		35 - 44	21.9%	78.1%
		45 - 54	32.1%	67.9%
		55 - 64	41.9%	58.1%
		65+	39.5%	60.5%
	2003	18 - 24	14.8%	85.2%
		25 - 34	17.2%	82.8%
		35 - 44	26.3%	73.7%
		45 - 54	33.0%	67.0%
		55 - 64	44.7%	55.3%
		65+	41.8%	58.2%
	2005	18 - 24	0.0%	100.0%
		25 - 34	17.6%	82.4%
		35 - 44	16.0%	84.0%
		45 - 54	41.5%	58.5%
		55 - 64	51.1%	48.9%
		65+	50.5%	49.5%
2007	18 - 24	0.0%	100.0%	
	25 - 34	6.4%	93.6%	
	35 - 44	16.3%	83.7%	
	45 - 54	37.6%	62.4%	
	55 - 64	42.7%	57.3%	
	65+	46.7%	53.3%	
2009	18 - 24	0.0%	100.0%	
	25 - 34	18.2%	81.8%	
	35 - 44	26.7%	73.3%	
	45 - 54	37.8%	62.2%	
	55 - 64	42.7%	57.3%	
	65+	42.6%	57.4%	

			Have you ever been told that you have high blood cholesterol?	
			Yes	No
Employment Status	1997	Employed	11.3%	88.7%
		Not Employed	21.4%	78.6%
	1999	Employed	22.3%	77.7%
		Not Employed	38.9%	61.1%
	2001	Employed	24.5%	75.5%
		Not Employed	39.7%	60.3%
	2003	Employed	27.0%	73.0%
		Not Employed	40.7%	59.3%
	2005	Employed	28.4%	71.6%
		Not Employed	50.0%	50.0%
	2007	Employed	22.6%	77.4%
		Not Employed	48.7%	51.3%
	2009	Employed	26.5%	73.5%
		Not Employed	40.9%	59.1%

			Have you ever been told that you have high blood cholesterol?	
			Yes	No
Education Level	1997	Less than High School	21.1%	78.9%
		High School Diploma or GED	12.3%	87.7%
		Some College/Technical	19.3%	80.7%
		College Degree or Higher	12.7%	87.3%
	1999	Less than High School	38.5%	61.5%
		High School Diploma or GED	33.3%	66.7%
		Some College/Technical	30.5%	69.5%
		College Degree or Higher	20.6%	79.4%
	2001	Less than High School	27.3%	72.7%
		High School Diploma or GED	31.7%	68.3%
		Some College/Technical	33.3%	66.7%
		College Degree or Higher	31.0%	69.0%
	2003	Less than High School	38.5%	61.5%
		High School Diploma or GED	33.7%	66.3%
		Some College/Technical	33.3%	66.7%
		College Degree or Higher	27.9%	72.1%
2005	Less than High School	48.9%	51.1%	
	High School Diploma or GED	46.6%	53.4%	
	Some College/Technical	36.2%	63.8%	
	College Degree or Higher	28.7%	71.3%	
2007	Less than High School	26.8%	73.2%	
	High School Diploma or GED	34.7%	65.3%	
	Some College/Technical	29.6%	70.4%	
	College Degree or Higher	30.4%	69.6%	
2009	Less than High School	42.1%	57.9%	
	High School Diploma or GED	39.4%	60.6%	
	Some College/Technical	25.5%	74.5%	
	College Degree or Higher	31.9%	68.1%	