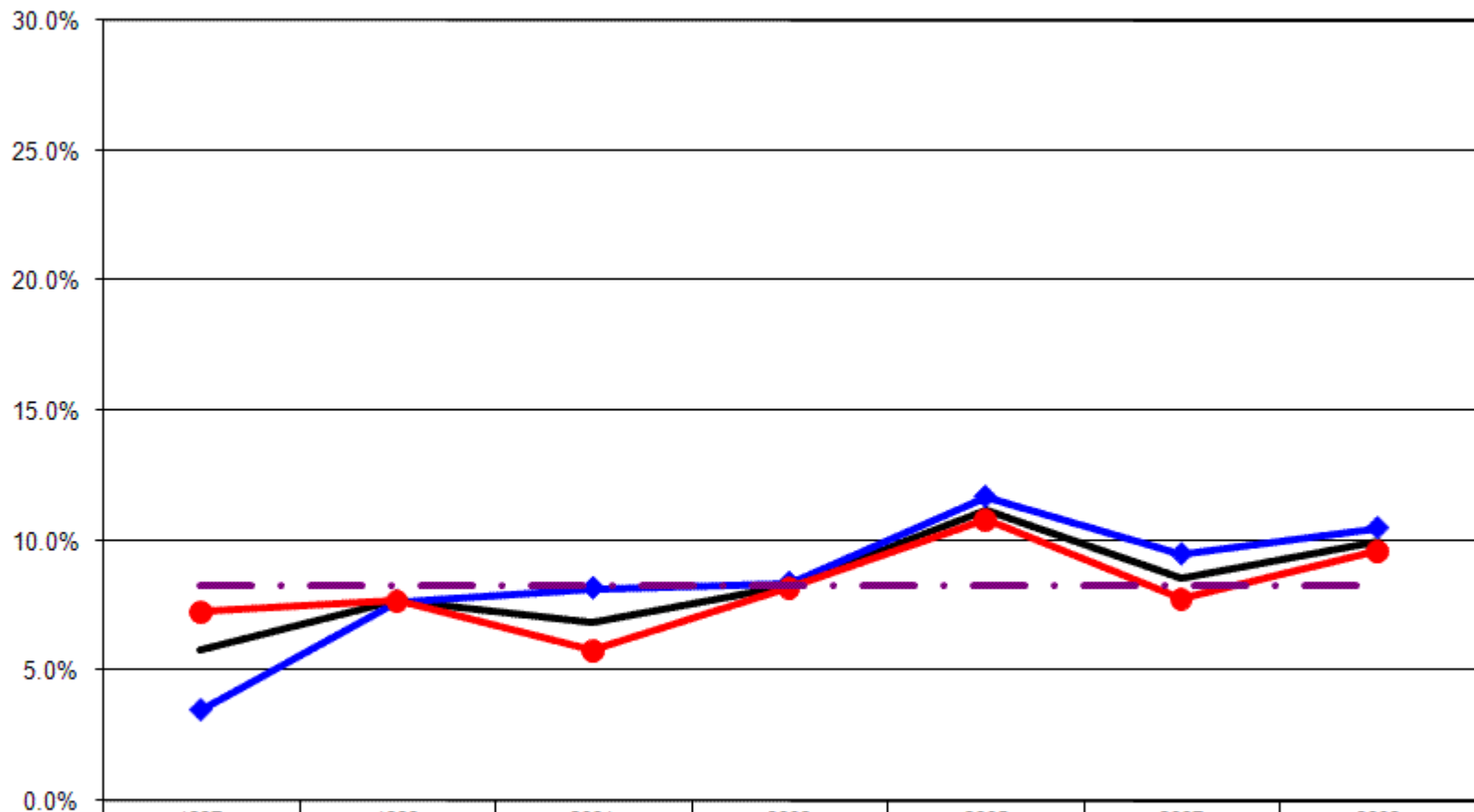


12 Year Review Diabetes

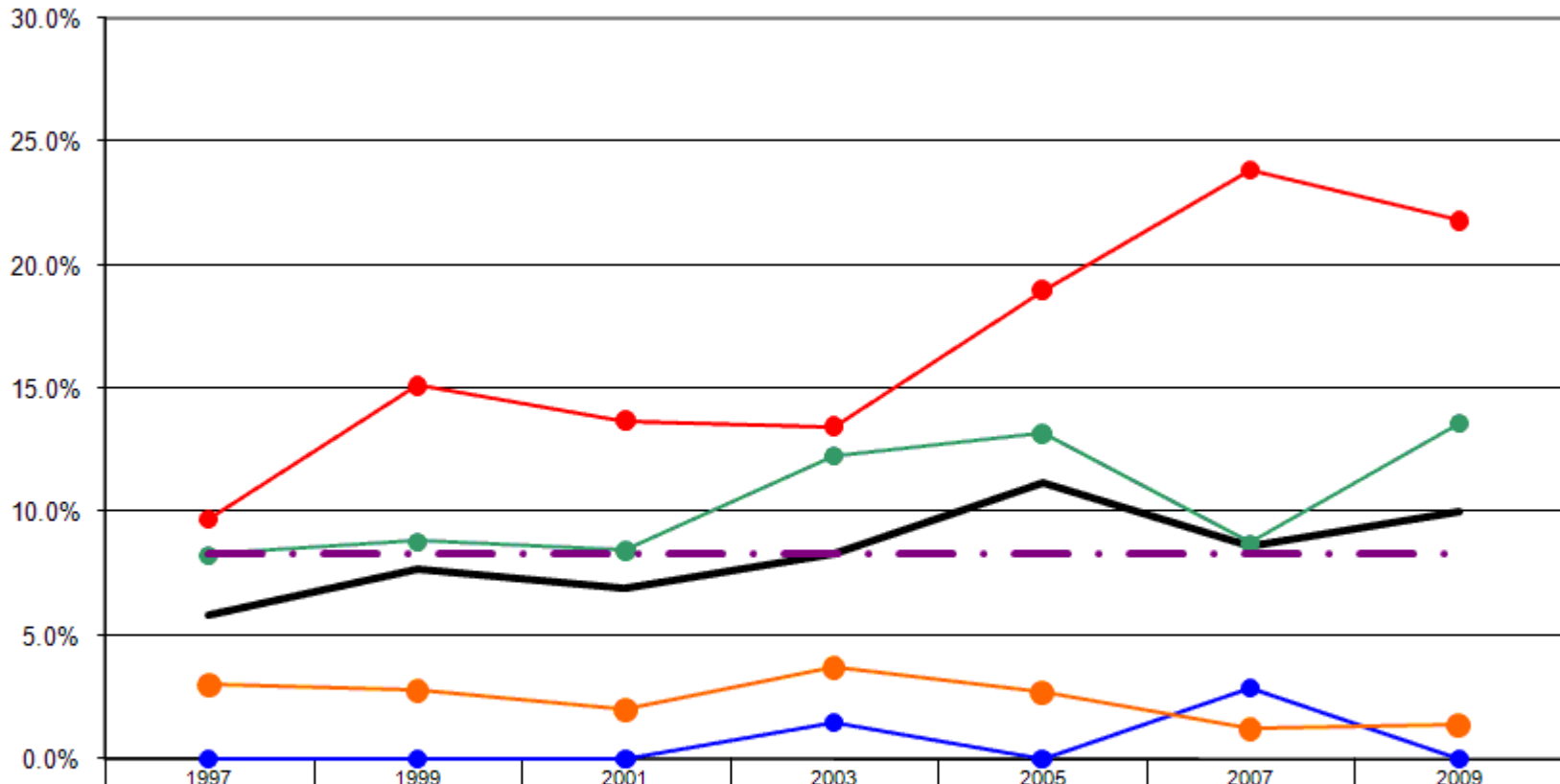
Diabetes Rates By Gender



	1997	1999	2001	2003	2005	2007	2009
— Total	5.8%	7.7%	6.9%	8.3%	11.2%	8.6%	10.0%
—◆ Male	3.5%	7.7%	8.2%	8.4%	11.7%	9.5%	10.5%
—● Female	7.3%	7.7%	5.8%	8.2%	10.8%	7.8%	9.6%
- - - US Total Rate*							8.3%

*Source: 2008 CDC BRFSS

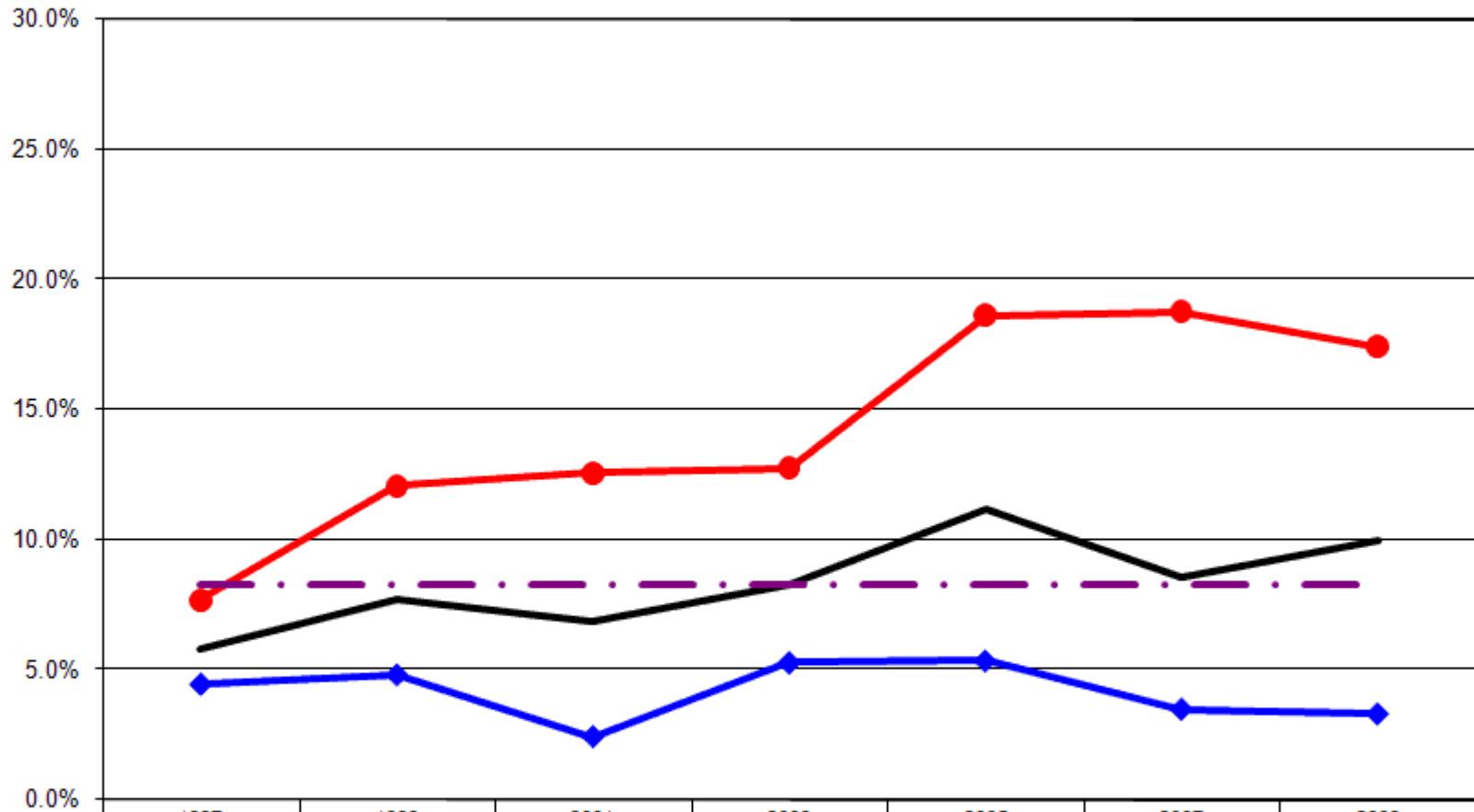
Diabetes Rates By Age



— Total	5.8%	7.7%	6.9%	8.3%	11.2%	8.6%	10.0%
● 18-24	0.0%	0.0%	0.0%	1.4%	0.0%	2.9%	0.0%
● 25-44	3.0%	2.8%	2.0%	3.7%	2.7%	1.2%	1.4%
● 45-64	8.3%	8.8%	8.5%	12.3%	13.2%	8.7%	13.6%
● 65+	9.7%	15.1%	13.7%	13.5%	19.0%	23.8%	21.8%
- - - US Total Rate*	8.3%						8.3%

*Source: 2008 CDC BRFSS

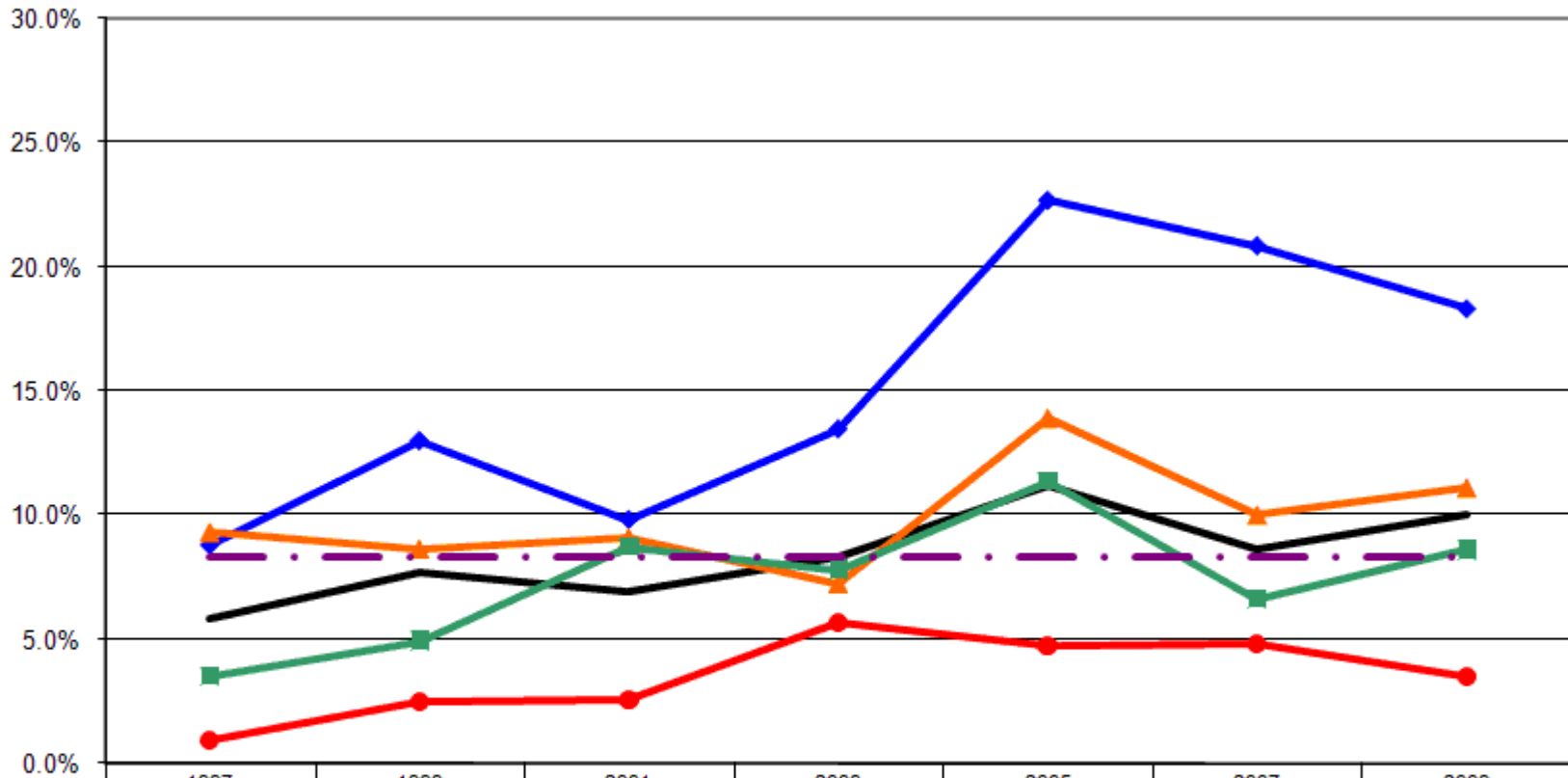
Diabetes Rates By Employment Status



	1997	1999	2001	2003	2005	2007	2009
— Total	5.8%	7.7%	6.9%	8.3%	11.2%	8.6%	10.0%
—◆— Employed	4.5%	4.8%	2.4%	5.3%	5.3%	3.5%	3.3%
—●— Not Employed	7.7%	12.1%	12.6%	12.7%	18.6%	18.8%	17.4%
-.-.- US Total Rate*							8.3%

*Source: 2008 CDC BRFSS

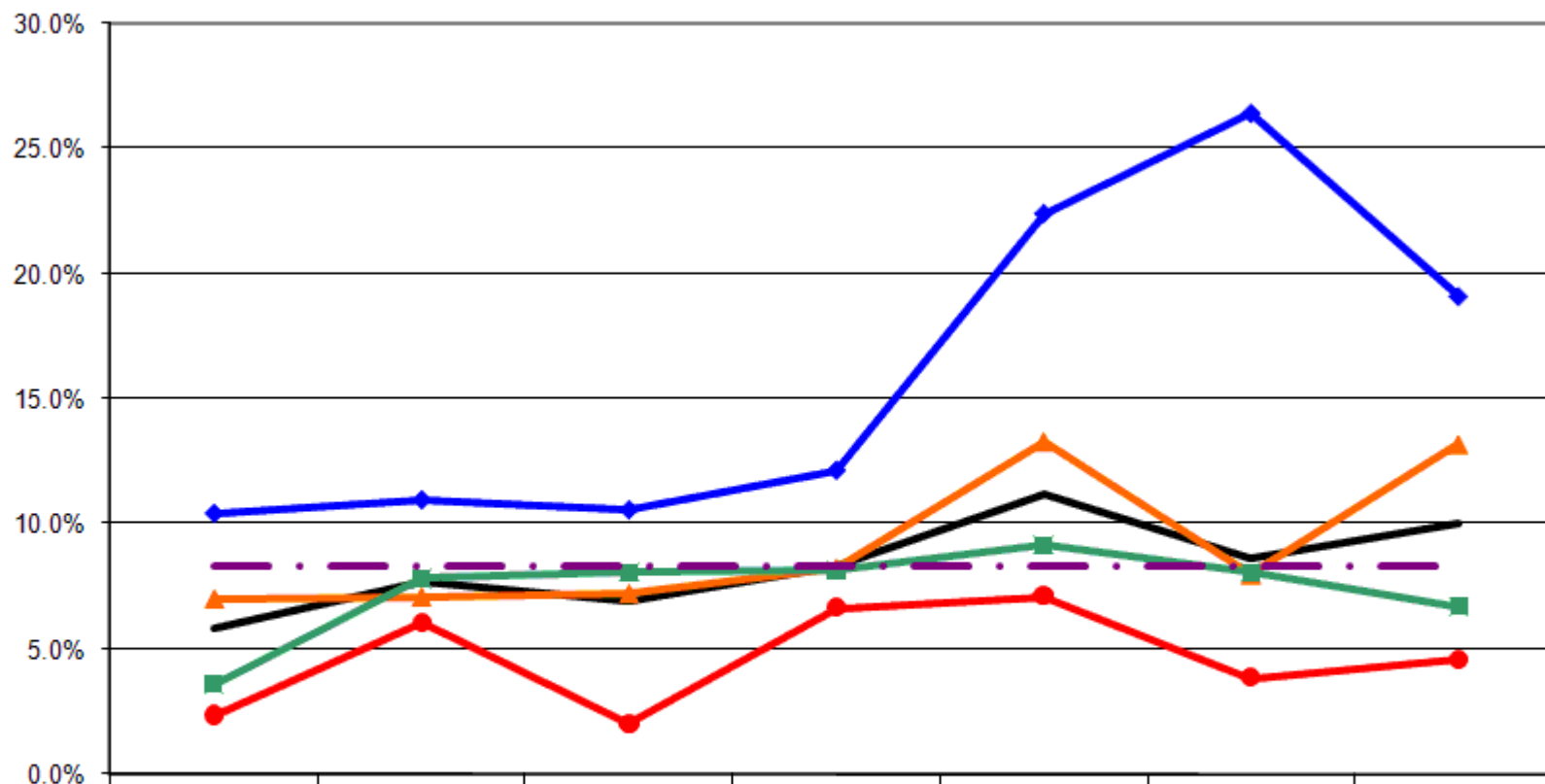
Diabetes Rates By Income



	1997	1999	2001	2003	2005	2007	2009
— Total	5.8%	7.7%	6.9%	8.3%	11.2%	8.6%	10.0%
—◆— <\$15K	8.8%	13.0%	9.8%	13.5%	22.7%	20.8%	18.3%
—▲— \$15-25K	9.3%	8.6%	9.1%	7.2%	13.9%	10.0%	11.1%
—■— \$25-50K	3.5%	5.0%	8.7%	7.8%	11.3%	6.6%	8.6%
—●— \$50K+	1.0%	2.5%	2.6%	5.7%	4.8%	4.8%	3.5%
-.-.- US Total Rate*							8.3%

*Source: 2008 CDC BRFSS

Diabetes Rates By Education



	1997	1999	2001	2003	2005	2007	2009
— Total	5.8%	7.7%	6.9%	8.3%	11.2%	8.6%	10.0%
—◆— <HS	10.4%	11.0%	10.6%	12.2%	22.4%	26.4%	19.1%
—▲— HS or GED	7.0%	7.1%	7.2%	8.2%	13.3%	8.0%	13.2%
—■— Some College	3.6%	7.8%	8.1%	8.2%	9.1%	8.1%	6.7%
—●— College Degree +	2.4%	6.1%	2.1%	6.7%	7.1%	3.9%	4.6%
- - - US Total Rate*							8.3%

*Source: 2008 CDC BRFSS

Interview Year 1997

		Have you ever been told that you have diabetes?			
		Yes	Yes, but only during pregnancy	No	No, pre-diabetes or borderline diabetes
Total		5.8%	0.0%	94.2%	0.0%
Gender	Male	3.5%	0.0%	96.5%	0.0%
	Female	7.3%	0.0%	92.7%	0.0%
Age	18 - 24	0.0%	0.0%	100.0%	0.0%
	25 - 34	1.6%	0.0%	98.4%	0.0%
	35 - 44	4.4%	0.0%	95.6%	0.0%
	45 - 54	7.1%	0.0%	92.9%	0.0%
	55 - 64	9.8%	0.0%	90.2%	0.0%
	65+	9.7%	0.0%	90.3%	0.0%
Employed	Yes	4.5%	0.0%	95.5%	0.0%
	No	7.7%	0.0%	92.3%	0.0%
Income	< \$15K	8.8%	0.0%	91.2%	0.0%
	\$15-25K	9.3%	0.0%	90.7%	0.0%
	\$25-50K	3.5%	0.0%	96.5%	0.0%
	\$50K +	1.0%	0.0%	99.0%	0.0%
Education	Less than High School	10.4%	0.0%	89.6%	0.0%
	High School Diploma or GED	7.0%	0.0%	93.0%	0.0%
	Some College/Technical	3.6%	0.0%	96.4%	0.0%
	College Degree or Higher	2.4%	0.0%	97.6%	0.0%

Interview Year 1999

		Have you ever been told that you have diabetes?			
		Yes	Yes, but only during pregnancy	No	No, pre-diabetes or borderline diabetes
Total		7.7%	1.5%	90.8%	0.0%
Gender	Male	7.7%	1.0%	91.3%	0.0%
	Female	7.7%	2.0%	90.3%	0.0%
Age	18 - 24	0.0%	0.0%	100.0%	0.0%
	25 - 34	0.9%	1.8%	97.2%	0.0%
	35 - 44	4.3%	1.4%	94.3%	0.0%
	45 - 54	9.2%	0.8%	90.0%	0.0%
	55 - 64	9.0%	3.0%	88.0%	0.0%
	65+	15.3%	1.7%	83.0%	0.0%
Employed	Yes	4.8%	1.2%	94.0%	0.0%
	No	12.1%	1.8%	86.2%	0.0%
Income	< \$15K	13.0%	1.3%	85.7%	0.0%
	\$15-25K	8.6%	2.9%	88.5%	0.0%
	\$25-50K	5.0%	1.4%	93.7%	0.0%
	\$50K +	2.5%	0.8%	96.7%	0.0%
Education	Less than High School	11.0%	3.7%	85.4%	0.0%
	High School Diploma or GED	7.1%	1.8%	91.2%	0.0%
	Some College/Technical	7.8%	0.5%	91.7%	0.0%
	College Degree or Higher	6.1%	1.5%	92.4%	0.0%

Interview Year 2001

		Have you ever been told that you have diabetes?			
		Yes	Yes, but only during pregnancy	No	No, pre-diabetes or borderline diabetes
Total		6.9%	0.9%	92.2%	0.0%
Gender	Male	8.2%	0.0%	91.8%	0.0%
	Female	5.8%	1.7%	92.5%	0.0%
Age	18 - 24	0.0%	0.0%	100.0%	0.0%
	25 - 34	1.9%	0.0%	98.1%	0.0%
	35 - 44	2.1%	1.4%	96.5%	0.0%
	45 - 54	3.6%	1.4%	94.9%	0.0%
	55 - 64	15.3%	0.0%	84.7%	0.0%
	65+	13.7%	1.6%	84.7%	0.0%
Employed	Yes	2.4%	0.7%	96.9%	0.0%
	No	12.6%	1.2%	86.2%	0.0%
Income	< \$15K	9.8%	1.0%	89.2%	0.0%
	\$15-25K	9.1%	1.5%	89.4%	0.0%
	\$25-50K	8.7%	0.8%	90.5%	0.0%
	\$50K +	2.6%	0.6%	96.8%	0.0%
Education	Less than High School	10.6%	1.0%	88.5%	0.0%
	High School Diploma or GED	7.2%	0.7%	92.1%	0.0%
	Some College/Technical	8.1%	1.9%	90.0%	0.0%
	College Degree or Higher	2.1%	0.0%	97.9%	0.0%

Interview Year 2003

		Have you ever been told that you have diabetes?			
		Yes	Yes, but only during pregnancy	No	No, pre-diabetes or borderline diabetes
Total		8.3%	2.6%	89.1%	0.0%
Gender	Male	8.4%	2.2%	89.4%	0.0%
	Female	8.2%	2.9%	88.9%	0.0%
Age	18 - 24	1.4%	2.9%	95.7%	0.0%
	25 - 34	2.7%	6.3%	91.1%	0.0%
	35 - 44	4.6%	3.8%	91.5%	0.0%
	45 - 54	12.7%	0.0%	87.3%	0.0%
	55 - 64	11.8%	2.4%	85.9%	0.0%
	65+	13.5%	0.6%	85.9%	0.0%
Employed	Yes	5.3%	3.3%	91.5%	0.0%
	No	12.7%	1.5%	85.7%	0.0%
Income	< \$15K	13.5%	1.0%	85.6%	0.0%
	\$15-25K	7.2%	3.1%	89.7%	0.0%
	\$25-50K	7.8%	3.1%	89.1%	0.0%
	\$50K +	5.7%	3.1%	91.2%	0.0%
Education	Less than High School	12.2%	1.4%	86.5%	0.0%
	High School Diploma or GED	8.2%	1.1%	90.7%	0.0%
	Some College/Technical	8.2%	4.9%	87.0%	0.0%
	College Degree or Higher	6.7%	3.0%	90.4%	0.0%

Interview Year 2005

		Have you ever been told that you have diabetes?			
		Yes	Yes, but only during pregnancy	No	No, pre-diabetes or borderline diabetes
Total		11.2%	0.7%	87.0%	1.1%
Gender	Male	11.7%	0.0%	87.1%	1.1%
	Female	10.8%	1.1%	86.9%	1.1%
Age	18 - 24	0.0%	0.0%	100.0%	0.0%
	25 - 34	4.3%	0.0%	95.7%	0.0%
	35 - 44	1.5%	2.3%	94.6%	1.5%
	45 - 54	15.0%	0.8%	82.5%	1.7%
	55 - 64	11.0%	0.0%	87.0%	2.0%
	65+	19.0%	0.5%	79.6%	0.9%
Employed	Yes	5.3%	0.8%	92.6%	1.3%
	No	18.6%	0.6%	79.8%	1.0%
Income	< \$15K	22.7%	0.0%	74.7%	2.7%
	\$15-25K	13.9%	0.8%	84.4%	0.8%
	\$25-50K	11.3%	0.5%	87.1%	1.0%
	\$50K +	4.8%	1.6%	93.7%	0.0%
Education	Less than High School	22.4%	1.7%	74.1%	1.7%
	High School Diploma or GED	13.3%	0.8%	84.8%	1.1%
	Some College/Technical	9.1%	0.0%	89.2%	1.6%
	College Degree or Higher	7.1%	1.0%	91.4%	0.5%

Interview Year 2007

		Have you ever been told that you have diabetes?			
		Yes	Yes, but only during pregnancy	No	No, pre-diabetes or borderline diabetes
Total		8.6%	1.9%	89.5%	0.0%
Gender	Male	9.5%	1.2%	89.3%	0.0%
	Female	7.8%	2.5%	89.8%	0.0%
Age	18 - 24	2.9%	5.7%	91.4%	0.0%
	25 - 34	0.0%	1.7%	98.3%	0.0%
	35 - 44	2.3%	2.3%	95.3%	0.0%
	45 - 54	5.5%	1.4%	93.1%	0.0%
	55 - 64	12.1%	0.0%	87.9%	0.0%
	65+	23.8%	3.1%	73.1%	0.0%
Employed	Yes	3.5%	1.5%	95.0%	0.0%
	No	18.8%	2.7%	78.6%	0.0%
Income	< \$15K	20.8%	1.4%	77.8%	0.0%
	\$15-25K	10.0%	1.4%	88.6%	0.0%
	\$25-50K	6.6%	1.8%	91.6%	0.0%
	\$50K +	4.8%	2.4%	92.8%	0.0%
Education	Less than High School	26.4%	1.9%	71.7%	0.0%
	High School Diploma or GED	8.0%	1.9%	90.2%	0.0%
	Some College/Technical	8.1%	1.8%	90.1%	0.0%
	College Degree or Higher	3.9%	1.9%	94.2%	0.0%

		Have you ever been told that you have diabetes?			
		Yes	Yes, but only during pregnancy	No	No, pre-diabetes or borderline diabetes
Total		10.0%	1.7%	87.0%	1.3%
Gender	Male	10.5%	0.9%	87.1%	1.5%
	Female	9.6%	2.5%	86.8%	1.1%
Age	18 - 24	0.0%	0.0%	98.8%	1.2%
	25 - 34	0.9%	4.5%	94.6%	0.0%
	35 - 44	1.8%	0.9%	96.4%	0.9%
	45 - 54	6.4%	1.8%	91.8%	0.0%
	55 - 64	21.4%	2.9%	72.8%	2.9%
	65+	21.8%	0.6%	75.9%	1.7%
Employed	Yes	3.3%	1.4%	94.5%	0.8%
	No	17.4%	2.1%	78.7%	1.8%
Income	< \$15K	18.3%	3.3%	78.3%	0.0%
	\$15-25K	11.1%	1.4%	83.3%	4.2%
	\$25-50K	8.6%	4.3%	86.4%	0.6%
	\$50K +	3.5%	0.0%	94.2%	2.3%
Education	Less than High School	19.1%	0.0%	78.7%	2.1%
	High School Diploma or GED	13.2%	2.9%	82.0%	1.9%
	Some College/Technical	6.7%	1.4%	90.9%	1.0%
	College Degree or Higher	4.6%	0.0%	95.4%	0.0%

			Have you ever been told by a doctor or other health professional that you have diabetes?			
			Yes	Yes, but only during pregnancy	No	No, pre-diabetes or borderline diabetes
Gender	1997	Male	3.5%	0.0%	96.5%	0.0%
		Female	7.3%	0.0%	92.7%	0.0%
	1999	Male	7.7%	1.0%	91.3%	0.0%
		Female	7.7%	2.0%	90.3%	0.0%
	2001	Male	8.2%	0.0%	91.8%	0.0%
		Female	5.8%	1.7%	92.5%	0.0%
	2003	Male	8.4%	2.2%	89.4%	0.0%
		Female	8.2%	2.9%	88.9%	0.0%
	2005	Male	11.7%	0.0%	87.1%	1.1%
		Female	10.8%	1.1%	86.9%	1.1%
	2007	Male	9.5%	1.2%	89.3%	0.0%
		Female	7.8%	2.5%	89.8%	0.0%
	2009	Male	10.5%	0.9%	87.1%	1.5%
		Female	9.6%	2.5%	86.8%	1.1%

Have you ever been told by a doctor or other health professional
that you have diabetes?

			Yes	Yes, but only during pregnancy	No	No, pre-diabetes or borderline diabetes
Income	1997	< \$15K	8.8%	0.0%	91.2%	0.0%
		\$15-25K	9.3%	0.0%	90.7%	0.0%
		\$25-50K	3.5%	0.0%	96.5%	0.0%
		\$50K +	1.0%	0.0%	99.0%	0.0%
	1999	< \$15K	13.0%	1.3%	85.7%	0.0%
		\$15-25K	8.6%	2.9%	88.5%	0.0%
		\$25-50K	5.0%	1.4%	93.7%	0.0%
		\$50K +	2.5%	0.8%	96.7%	0.0%
	2001	< \$15K	9.8%	1.0%	89.2%	0.0%
		\$15-25K	9.1%	1.5%	89.4%	0.0%
		\$25-50K	8.7%	0.8%	90.5%	0.0%
		\$50K +	2.6%	0.6%	96.8%	0.0%
	2003	< \$15K	13.5%	1.0%	85.6%	0.0%
		\$15-25K	7.2%	3.1%	89.7%	0.0%
		\$25-50K	7.8%	3.1%	89.1%	0.0%
		\$50K +	5.7%	3.1%	91.2%	0.0%
	2005	< \$15K	22.7%	0.0%	74.7%	2.7%
		\$15-25K	13.9%	0.8%	84.4%	0.8%
		\$25-50K	11.3%	0.5%	87.1%	1.0%
		\$50K +	4.8%	1.6%	93.7%	0.0%
2007	< \$15K	20.8%	1.4%	77.8%	0.0%	
	\$15-25K	10.0%	1.4%	88.6%	0.0%	
	\$25-50K	6.6%	1.8%	91.6%	0.0%	
	\$50K +	4.8%	2.4%	92.8%	0.0%	
2009	< \$15K	18.3%	3.3%	78.3%	0.0%	
	\$15-25K	11.1%	1.4%	83.3%	4.2%	
	\$25-50K	8.6%	4.3%	86.4%	0.6%	
	\$50K +	3.5%	0.0%	94.2%	2.3%	

Have you ever been told by a doctor or other health professional
that you have diabetes?

Age			Have you ever been told by a doctor or other health professional that you have diabetes?			
			Yes	Yes, but only during pregnancy	No	No, pre-diabetes or borderline diabetes
1997	18 - 24		0.0%	0.0%	100.0%	0.0%
	25 - 34		1.6%	0.0%	98.4%	0.0%
	35 - 44		4.4%	0.0%	95.6%	0.0%
	45 - 54		7.1%	0.0%	92.9%	0.0%
	55 - 64		9.8%	0.0%	90.2%	0.0%
	65+		9.7%	0.0%	90.3%	0.0%
1999	18 - 24		0.0%	0.0%	100.0%	0.0%
	25 - 34		0.9%	1.8%	97.2%	0.0%
	35 - 44		4.3%	1.4%	94.3%	0.0%
	45 - 54		9.2%	0.8%	90.0%	0.0%
	55 - 64		9.0%	3.0%	88.0%	0.0%
	65+		15.3%	1.7%	83.0%	0.0%
2001	18 - 24		0.0%	0.0%	100.0%	0.0%
	25 - 34		1.9%	0.0%	98.1%	0.0%
	35 - 44		2.1%	1.4%	96.5%	0.0%
	45 - 54		3.6%	1.4%	94.9%	0.0%
	55 - 64		15.3%	0.0%	84.7%	0.0%
	65+		13.7%	1.6%	84.7%	0.0%
2003	18 - 24		1.4%	2.9%	95.7%	0.0%
	25 - 34		2.7%	6.3%	91.1%	0.0%
	35 - 44		4.6%	3.8%	91.5%	0.0%
	45 - 54		12.7%	0.0%	87.3%	0.0%
	55 - 64		11.8%	2.4%	85.9%	0.0%
	65+		13.5%	0.6%	85.9%	0.0%
2005	18 - 24		0.0%	0.0%	100.0%	0.0%
	25 - 34		4.3%	0.0%	95.7%	0.0%
	35 - 44		1.5%	2.3%	94.6%	1.5%
	45 - 54		15.0%	0.8%	82.5%	1.7%
	55 - 64		11.0%	0.0%	87.0%	2.0%
	65+		19.0%	0.5%	79.6%	0.9%
2007	18 - 24		2.9%	5.7%	91.4%	0.0%
	25 - 34		0.0%	1.7%	98.3%	0.0%
	35 - 44		2.3%	2.3%	95.3%	0.0%
	45 - 54		5.5%	1.4%	93.1%	0.0%
	55 - 64		12.1%	0.0%	87.9%	0.0%
	65+		23.8%	3.1%	73.1%	0.0%
2009	18 - 24		0.0%	0.0%	98.8%	1.2%
	25 - 34		0.9%	4.5%	94.6%	0.0%
	35 - 44		1.8%	0.9%	96.4%	0.9%
	45 - 54		6.4%	1.8%	91.8%	0.0%
	55 - 64		21.4%	2.9%	72.8%	2.9%
	65+		21.8%	0.6%	75.9%	1.7%

Have you ever been told by a doctor or other health professional
that you have diabetes?

			Yes	Yes, but only during pregnancy	No	No, pre-diabetes or borderline diabetes
Employment Status	1997	Employed	4.5%	0.0%	95.5%	0.0%
		Not Employed	7.7%	0.0%	92.3%	0.0%
	1999	Employed	4.8%	1.2%	94.0%	0.0%
		Not Employed	12.1%	1.8%	86.2%	0.0%
	2001	Employed	2.4%	0.7%	96.9%	0.0%
		Not Employed	12.6%	1.2%	86.2%	0.0%
	2003	Employed	5.3%	3.3%	91.5%	0.0%
		Not Employed	12.7%	1.5%	85.7%	0.0%
	2005	Employed	5.3%	0.8%	92.6%	1.3%
		Not Employed	18.6%	0.6%	79.8%	1.0%
	2007	Employed	3.5%	1.5%	95.0%	0.0%
		Not Employed	18.8%	2.7%	78.6%	0.0%
	2009	Employed	3.3%	1.4%	94.5%	0.8%
		Not Employed	17.4%	2.1%	78.7%	1.8%

			Have you ever been told by a doctor or other health professional that you have diabetes?			
			Yes	Yes, but only during pregnancy	No	No, pre-diabetes or borderline diabetes
Education Level	1997	Less than High School	10.4%	0.0%	89.6%	0.0%
		High School Diploma/GED	7.0%	0.0%	93.0%	0.0%
		Some College/Technical	3.6%	0.0%	96.4%	0.0%
		College Degree or Higher	2.4%	0.0%	97.6%	0.0%
	1999	Less than High School	11.0%	3.7%	85.4%	0.0%
		High School Diploma/GED	7.1%	1.8%	91.2%	0.0%
		Some College/Technical	7.8%	0.5%	91.7%	0.0%
		College Degree or Higher	6.1%	1.5%	92.4%	0.0%
	2001	Less than High School	10.6%	1.0%	88.5%	0.0%
		High School Diploma/GED	7.2%	0.7%	92.1%	0.0%
		Some College/Technical	8.1%	1.9%	90.0%	0.0%
		College Degree or Higher	2.1%	0.0%	97.9%	0.0%
	2003	Less than High School	12.2%	1.4%	86.5%	0.0%
		High School Diploma/GED	8.2%	1.1%	90.7%	0.0%
		Some College/Technical	8.2%	4.9%	87.0%	0.0%
		College Degree or Higher	6.7%	3.0%	90.4%	0.0%
	2005	Less than High School	22.4%	1.7%	74.1%	1.7%
		High School Diploma/GED	13.3%	0.8%	84.8%	1.1%
		Some College/Technical	9.1%	0.0%	89.2%	1.6%
		College Degree or Higher	7.1%	1.0%	91.4%	0.5%
2007	Less than High School	26.4%	1.9%	71.7%	0.0%	
	High School Diploma/GED	8.0%	1.9%	90.2%	0.0%	
	Some College/Technical	8.1%	1.8%	90.1%	0.0%	
	College Degree or Higher	3.9%	1.9%	94.2%	0.0%	
2009	Less than High School	19.1%	0.0%	78.7%	2.1%	
	High School Diploma/GED	13.2%	2.9%	82.0%	1.9%	
	Some College/Technical	6.7%	1.4%	90.9%	1.0%	
	College Degree or Higher	4.6%	0.0%	95.4%	0.0%	