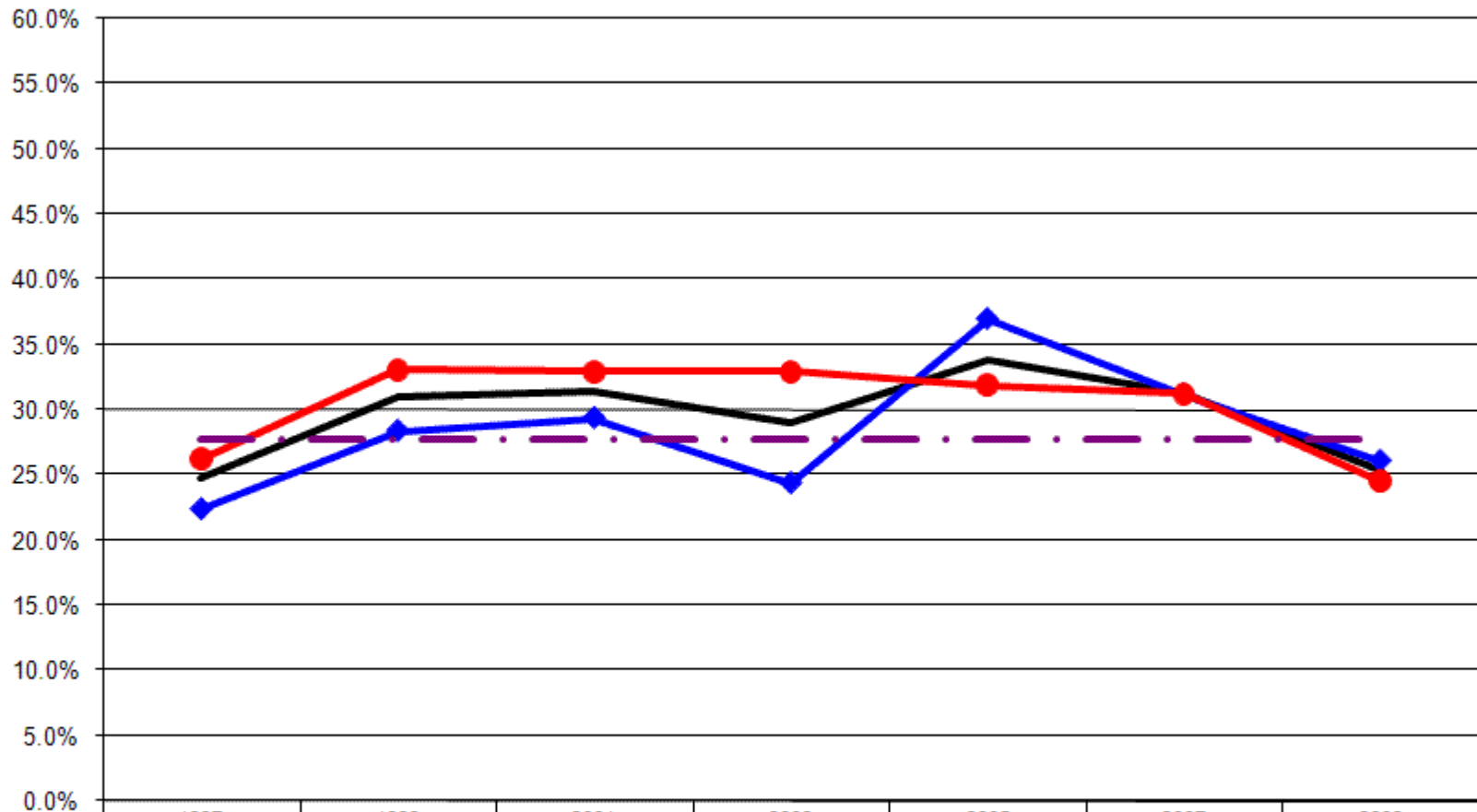


# 12 Year Review Hypertension

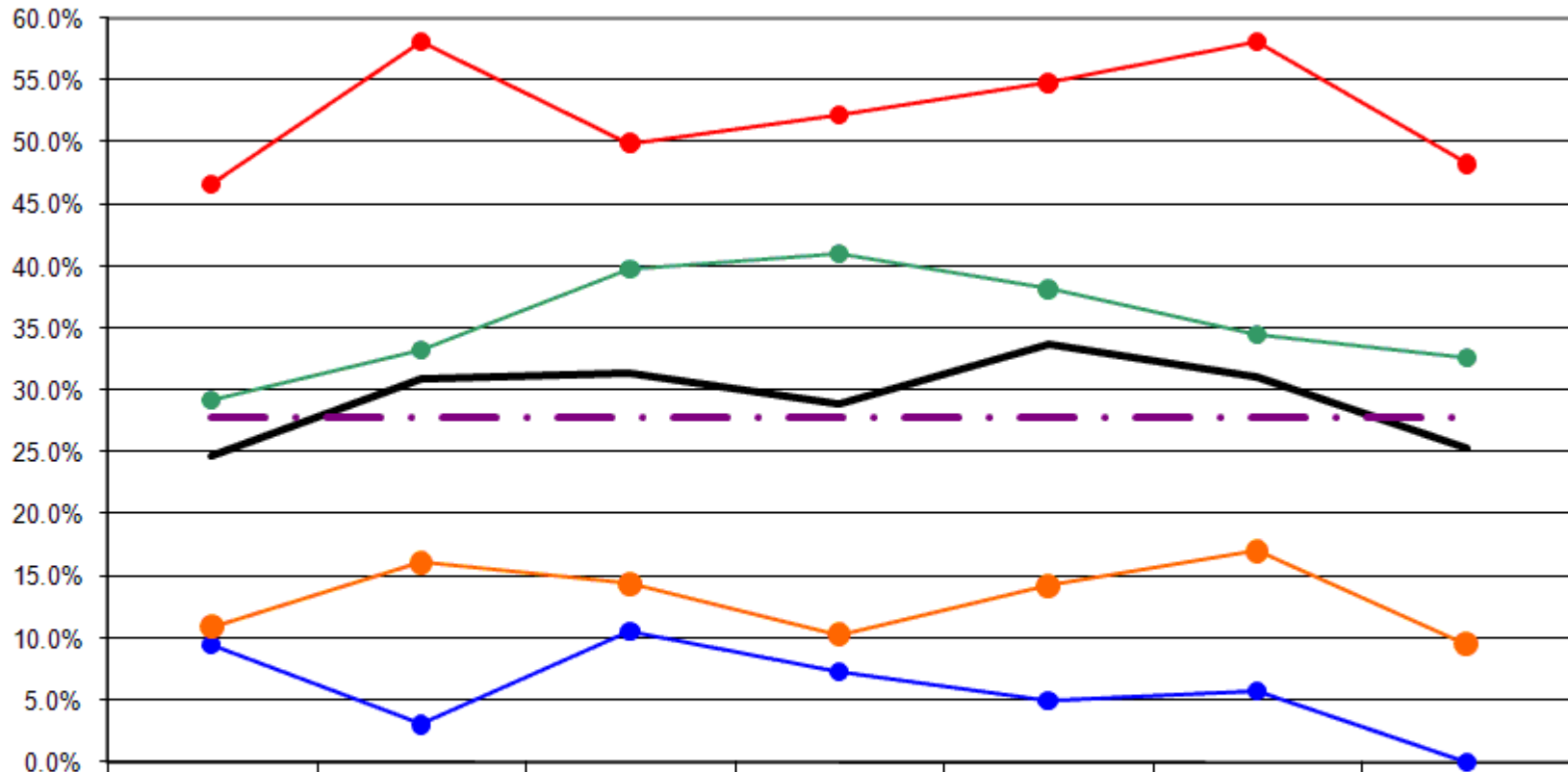
## Have High Blood Pressure By Gender



	1997	1999	2001	2003	2005	2007	2009
— Total	24.7%	31.0%	31.4%	28.9%	33.8%	31.2%	25.3%
—◆ Male	22.4%	28.4%	29.4%	24.4%	37.0%	31.2%	26.1%
—● Female	26.2%	33.1%	32.9%	33.0%	31.9%	31.2%	24.5%
- - - US Total Rate*							27.8%

\*Source: 2007 CDC BRFSS

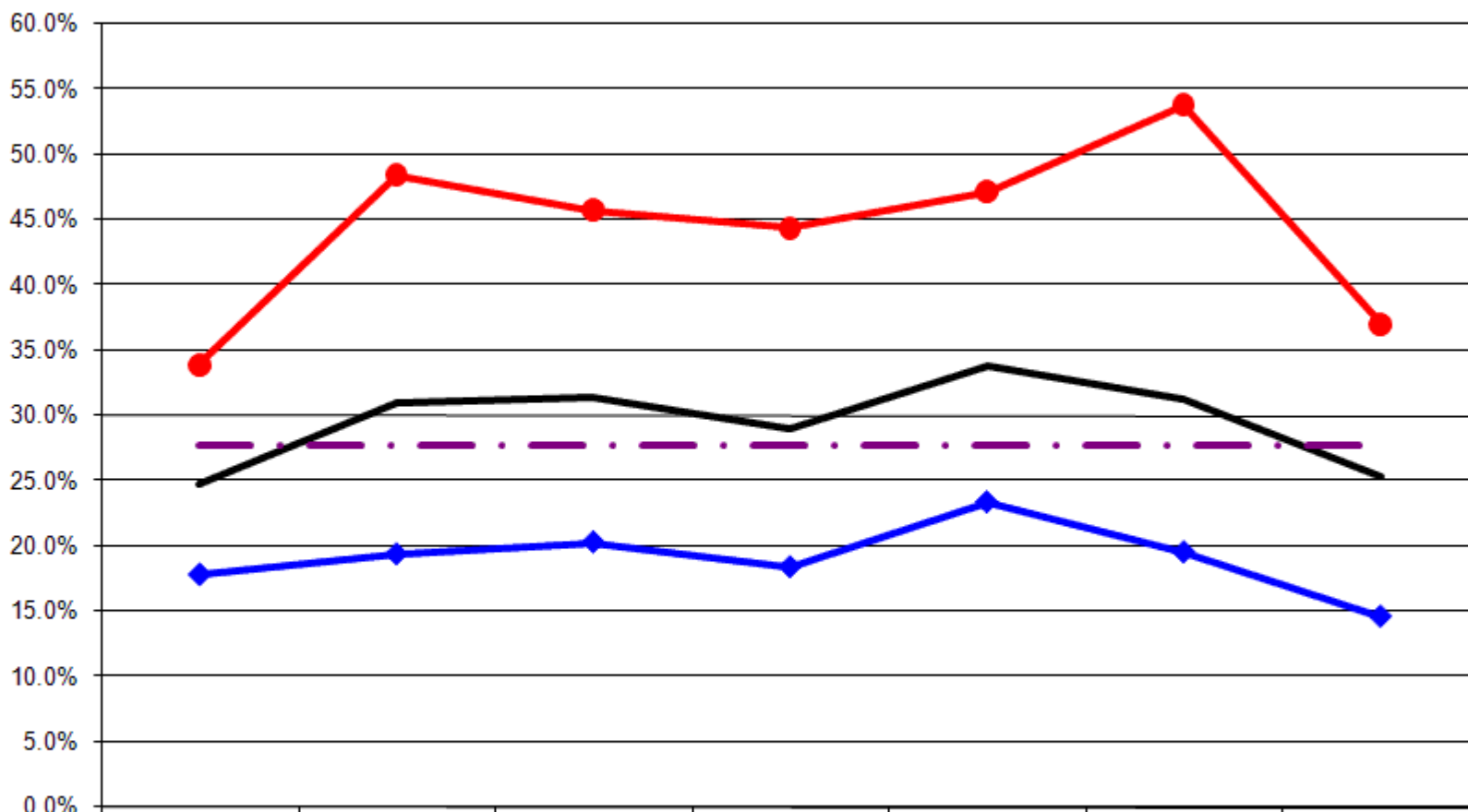
### Have High Blood Pressure By Age



	1997	1999	2001	2003	2005	2007	2009
— Total	24.7%	31.0%	31.4%	28.9%	33.8%	31.2%	25.3%
● 18-24	9.4%	3.0%	10.5%	7.2%	5.0%	5.7%	0.0%
● 25-44	10.9%	16.1%	14.4%	10.3%	14.3%	17.1%	9.5%
● 45-64	29.3%	33.3%	39.8%	41.0%	38.2%	34.5%	32.7%
● 65+	46.7%	58.1%	50.0%	52.3%	54.8%	58.1%	48.3%
- - - US Total Rate*							27.8%

\*Source: 2007 CDC BRFSS

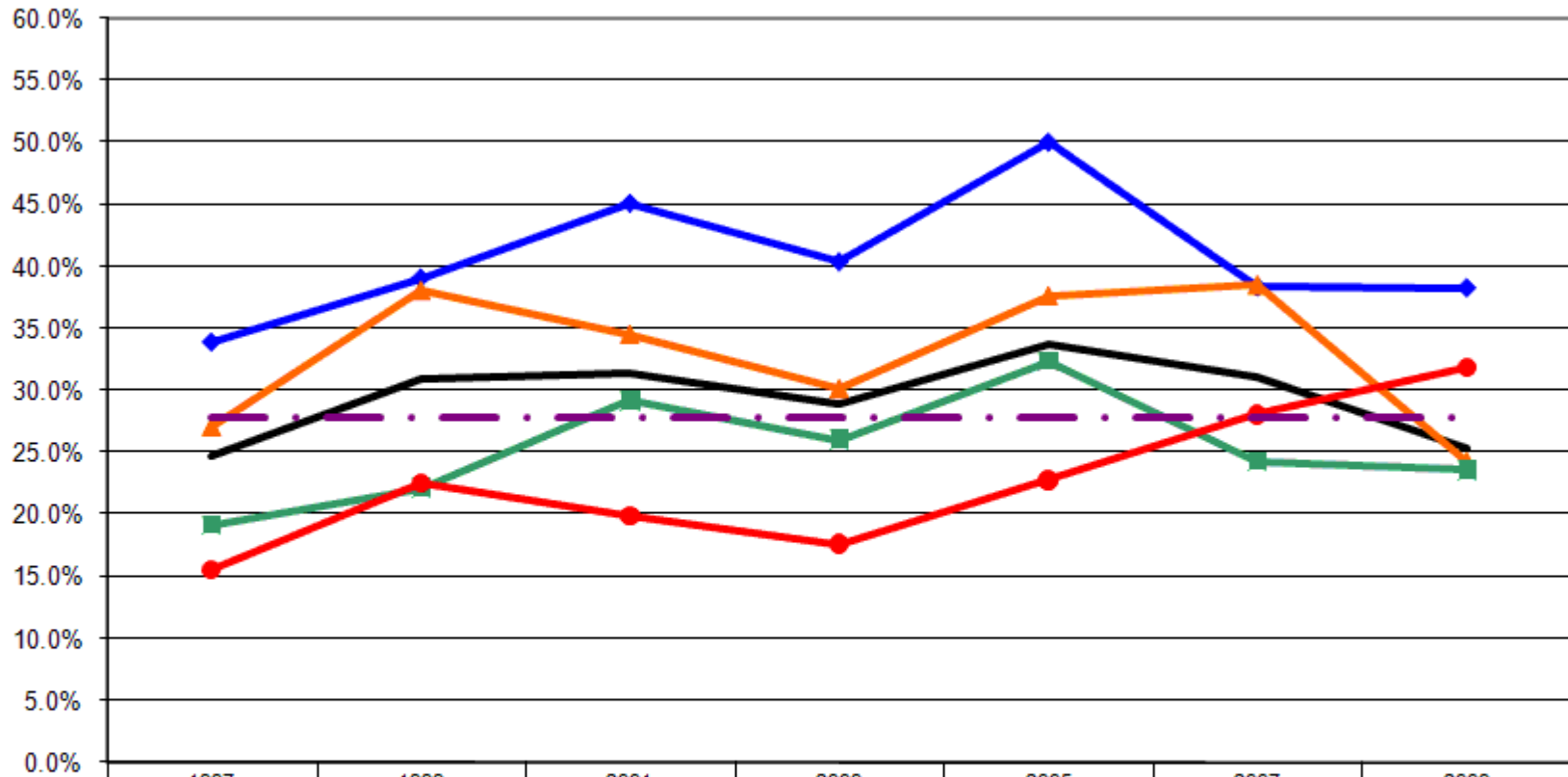
### Have High Blood Pressure By Employment Status



	1997	1999	2001	2003	2005	2007	2009
— Total	24.7%	31.0%	31.4%	28.9%	33.8%	31.2%	25.3%
—◆— Employed	17.8%	19.4%	20.3%	18.4%	23.4%	19.5%	14.6%
—●— Not Employed	33.9%	48.4%	45.7%	44.4%	47.1%	53.8%	37.0%
-.-.- US Total Rate*							27.8%

\*Source: 2007 CDC BRFSS

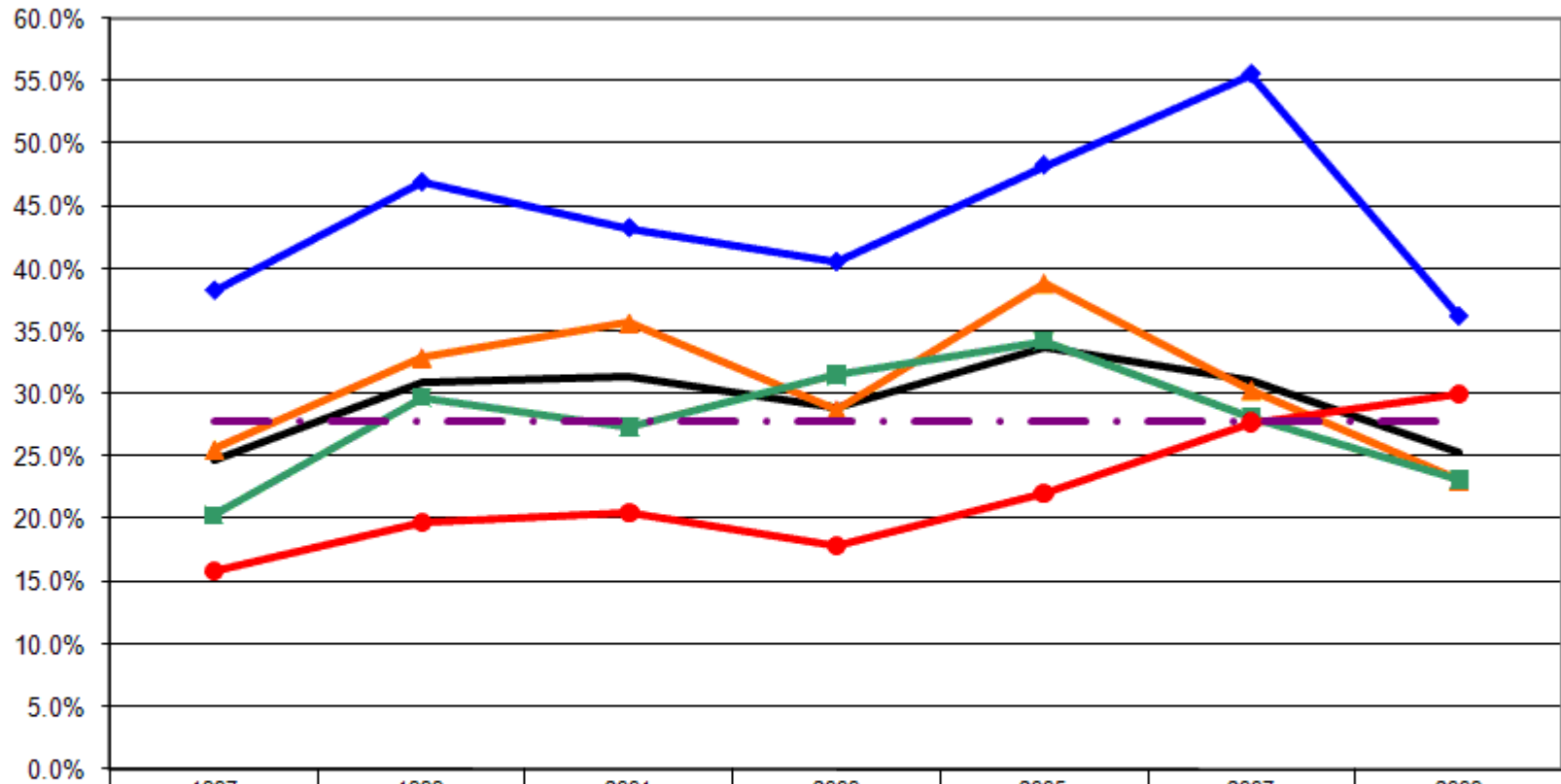
### Have High Blood Pressure By Income



	1997	1999	2001	2003	2005	2007	2009
Total	24.7%	31.0%	31.4%	28.9%	33.8%	31.2%	25.3%
< \$15K	33.9%	39.1%	45.1%	40.4%	50.0%	38.4%	38.3%
\$15-25K	27.1%	38.1%	34.6%	30.2%	37.7%	38.6%	24.3%
\$25-50K	19.2%	22.2%	29.2%	26.0%	32.3%	24.2%	23.6%
\$50K+	15.5%	22.5%	19.9%	17.6%	22.8%	28.0%	31.8%
US Total Rate*							27.8%

\*Source: 2007 CDC BRFSS

### Have High Blood Pressure By Education



	1997	1999	2001	2003	2005	2007	2009
— Total	24.7%	31.0%	31.4%	28.9%	33.8%	31.2%	25.3%
—◆— <HS	38.3%	46.9%	43.3%	40.5%	48.3%	55.6%	36.2%
—▲— HS or GED	25.6%	32.9%	35.6%	28.7%	38.8%	30.3%	23.1%
—■— Some College	20.4%	29.8%	27.4%	31.5%	34.2%	28.1%	23.2%
—●— College Degree +	15.9%	19.7%	20.5%	17.9%	22.1%	27.7%	30.0%
- · - · - US Total Rate*							27.8%

\*Source: 2007 CDC BRFSS

## Interview Year 1997

## Have you ever been told that you have high blood pressure?

		Yes	Yes, female told during pregnancy	No	Told borderline high or pre-hypertensive
<b>Total</b>		<b>24.7%</b>	<b>0.0%</b>	<b>75.3%</b>	<b>0.0%</b>
Gender	Male	22.4%	0.0%	77.6%	0.0%
	Female	26.2%	0.0%	73.8%	0.0%
Age	18 - 24	9.4%	0.0%	90.6%	0.0%
	25 - 34	5.4%	0.0%	94.6%	0.0%
	35 - 44	16.2%	0.0%	83.8%	0.0%
	45 - 54	27.3%	0.0%	72.7%	0.0%
	55 - 64	31.7%	0.0%	68.3%	0.0%
	65+	46.7%	0.0%	53.3%	0.0%
Employed	Yes	17.8%	0.0%	82.2%	0.0%
	No	33.9%	0.0%	66.1%	0.0%
Income	< \$15K	33.9%	0.0%	66.1%	0.0%
	\$15-25K	27.1%	0.0%	72.9%	0.0%
	\$25-50K	19.2%	0.0%	80.8%	0.0%
	\$50K +	15.5%	0.0%	84.5%	0.0%
Education	Less than High School	38.3%	0.0%	61.7%	0.0%
	High School Diploma or GED	25.6%	0.0%	74.4%	0.0%
	Some College/Technical	20.4%	0.0%	79.6%	0.0%
	College Degree or Higher	15.9%	0.0%	84.1%	0.0%

## Interview Year 1999

## Have you ever been told that you have high blood pressure?

		Yes	Yes, female told during pregnancy	No	Told borderline high or pre-hypertensive
<b>Total</b>		<b>31.0%</b>	<b>0.0%</b>	<b>69.0%</b>	<b>0.0%</b>
Gender	Male	28.4%	0.0%	71.6%	0.0%
	Female	33.1%	0.0%	66.9%	0.0%
Age	18 - 24	3.0%	0.0%	97.0%	0.0%
	25 - 34	8.3%	0.0%	91.7%	0.0%
	35 - 44	22.3%	0.0%	77.7%	0.0%
	45 - 54	28.3%	0.0%	71.7%	0.0%
	55 - 64	45.0%	0.0%	55.0%	0.0%
	65+	57.1%	0.0%	42.9%	0.0%
Employed	Yes	19.4%	0.0%	80.6%	0.0%
	No	48.4%	0.0%	51.6%	0.0%
Income	< \$15K	39.1%	0.0%	60.9%	0.0%
	\$15-25K	38.1%	0.0%	61.9%	0.0%
	\$25-50K	22.2%	0.0%	77.8%	0.0%
	\$50K +	22.5%	0.0%	77.5%	0.0%
Education	Less than High School	46.9%	0.0%	53.1%	0.0%
	High School Diploma or GED	32.9%	0.0%	67.1%	0.0%
	Some College/Technical	29.8%	0.0%	70.2%	0.0%
	College Degree or Higher	19.7%	0.0%	80.3%	0.0%

Interview Year 2001

		Have you ever been told that you have high blood pressure?			
		Yes	Yes, female told during pregnancy	No	Told borderline high or pre-hypertensive
<b>Total</b>		<b>31.4%</b>	<b>0.0%</b>	<b>68.6%</b>	<b>0.0%</b>
Gender	Male	29.4%	0.0%	70.6%	0.0%
	Female	32.9%	0.0%	67.1%	0.0%
Age	18 - 24	10.5%	0.0%	89.5%	0.0%
	25 - 34	10.5%	0.0%	89.5%	0.0%
	35 - 44	17.2%	0.0%	82.8%	0.0%
	45 - 54	33.3%	0.0%	66.7%	0.0%
	55 - 64	49.0%	0.0%	51.0%	0.0%
	65+	50.0%	0.0%	50.0%	0.0%
Employed	Yes	20.3%	0.0%	79.7%	0.0%
	No	45.7%	0.0%	54.3%	0.0%
Income	< \$15K	45.1%	0.0%	54.9%	0.0%
	\$15-25K	34.6%	0.0%	65.4%	0.0%
	\$25-50K	29.2%	0.0%	70.8%	0.0%
	\$50K +	19.9%	0.0%	80.1%	0.0%
Education	Less than High School	43.3%	0.0%	56.7%	0.0%
	High School Diploma or GED	35.6%	0.0%	64.4%	0.0%
	Some College/Technical	27.4%	0.0%	72.6%	0.0%
	College Degree or Higher	20.5%	0.0%	79.5%	0.0%

Interview Year 2003

		Have you ever been told that you have high blood pressure?			
		Yes	Yes, female told during pregnancy	No	Told borderline high or pre-hypertensive
<b>Total</b>		<b>28.9%</b>	<b>1.1%</b>	<b>70.1%</b>	<b>0.0%</b>
Gender	Male	24.4%	1.6%	74.1%	0.0%
	Female	33.0%	0.6%	66.4%	0.0%
Age	18 - 24	7.2%	1.4%	91.3%	0.0%
	25 - 34	6.3%	1.8%	92.0%	0.0%
	35 - 44	13.8%	2.3%	83.8%	0.0%
	45 - 54	33.6%	0.0%	66.4%	0.0%
	55 - 64	50.6%	0.0%	49.4%	0.0%
	65+	52.3%	0.6%	47.1%	0.0%
Employed	Yes	18.4%	1.5%	80.1%	0.0%
	No	44.4%	0.4%	55.2%	0.0%
Income	< \$15K	40.4%	1.9%	57.7%	0.0%
	\$15-25K	30.2%	1.0%	68.8%	0.0%
	\$25-50K	26.0%	0.5%	73.4%	0.0%
	\$50K +	17.6%	0.6%	81.8%	0.0%
Education	Less than High School	40.5%	2.7%	56.8%	0.0%
	High School Diploma or GED	28.7%	0.4%	70.9%	0.0%
	Some College/Technical	31.5%	1.1%	67.4%	0.0%
	College Degree or Higher	17.9%	1.5%	80.6%	0.0%

## Interview Year 2005

Have you ever been told that you have high blood pressure?

		Yes	Yes, female told during pregnancy	No	Told borderline high or pre-hypertensive
<b>Total</b>		<b>33.8%</b>	<b>0.8%</b>	<b>64.4%</b>	<b>1.0%</b>
Gender	Male	37.0%	0.0%	61.9%	1.1%
	Female	31.9%	1.3%	65.8%	0.9%
Age	18 - 24	5.0%	0.0%	95.0%	0.0%
	25 - 34	15.1%	1.1%	83.9%	0.0%
	35 - 44	13.7%	3.8%	81.7%	0.8%
	45 - 54	31.7%	0.0%	66.7%	1.7%
	55 - 64	46.0%	0.0%	52.0%	2.0%
	65+	54.8%	0.0%	44.2%	0.9%
Employed	Yes	23.4%	1.5%	74.1%	1.0%
	No	47.1%	0.0%	51.9%	1.0%
Income	< \$15K	50.0%	0.0%	48.7%	1.3%
	\$15-25K	37.7%	0.0%	61.5%	0.8%
	\$25-50K	32.3%	0.0%	66.7%	1.0%
	\$50K +	22.8%	2.6%	74.1%	0.5%
Education	Less than High School	48.3%	0.0%	50.0%	1.7%
	High School Diploma or GED	38.8%	0.0%	60.1%	1.1%
	Some College/Technical	34.2%	0.0%	65.2%	0.5%
	College Degree or Higher	22.1%	3.0%	73.9%	1.0%

## Interview Year 2007

Have you ever been told that you have high blood pressure?

		Yes	Yes, female told during pregnancy	No	Told borderline high or pre-hypertensive
<b>Total</b>		<b>31.2%</b>	<b>3.0%</b>	<b>65.8%</b>	<b>0.0%</b>
Gender	Male	31.2%	0.9%	68.0%	0.0%
	Female	31.2%	5.0%	63.8%	0.0%
Age	18 - 24	5.7%	5.7%	88.6%	0.0%
	25 - 34	9.4%	6.8%	83.8%	0.0%
	35 - 44	24.0%	2.3%	73.6%	0.0%
	45 - 54	27.6%	3.4%	69.0%	0.0%
	55 - 64	41.5%	.7%	57.7%	0.0%
	65+	58.1%	1.6%	40.3%	0.0%
Employed	Yes	19.5%	3.0%	77.4%	0.0%
	No	53.8%	3.1%	43.0%	0.0%
Income	< \$15K	38.4%	0.0%	61.6%	0.0%
	\$15-25K	38.6%	1.4%	60.0%	0.0%
	\$25-50K	24.2%	3.5%	72.2%	0.0%
	\$50K +	28.0%	4.3%	67.6%	0.0%
Education	Less than High School	55.6%	1.9%	42.6%	0.0%
	High School Diploma or GED	30.3%	1.9%	67.8%	0.0%
	Some College/Technical	28.1%	4.0%	67.9%	0.0%
	College Degree or Higher	27.7%	3.9%	68.4%	0.0%

Have you ever been told that you have high blood pressure?

		Yes	Yes, female told during pregnancy	No	Told borderline high or pre-hypertensive
<b>Total</b>		<b>25.3%</b>	<b>3.3%</b>	<b>70.4%</b>	<b>1.0%</b>
Gender	Male	26.1%	1.2%	71.7%	0.9%
	Female	24.5%	5.2%	69.2%	1.1%
Age	18 - 24	0.0%	1.2%	98.8%	0.0%
	25 - 34	6.4%	8.2%	84.5%	0.9%
	35 - 44	12.7%	2.7%	83.6%	0.9%
	45 - 54	27.5%	3.7%	67.0%	1.8%
	55 - 64	38.2%	0.0%	58.8%	2.9%
	65+	48.3%	3.4%	48.3%	0.0%
Employed	Yes	14.6%	2.5%	81.5%	1.4%
	No	37.0%	4.2%	58.2%	0.6%
Income	< \$15K	38.3%	0.0%	58.3%	3.3%
	\$15-25K	24.3%	4.3%	70.0%	1.4%
	\$25-50K	23.6%	8.1%	67.1%	1.2%
	\$50K +	31.8%	1.2%	64.7%	2.4%
Education	Less than High School	36.2%	10.6%	51.1%	2.1%
	High School Diploma or GED	23.1%	1.6%	74.4%	1.0%
	Some College/Technical	23.2%	2.9%	73.4%	0.5%
	College Degree or Higher	30.0%	5.4%	63.1%	1.5%

Have you ever been told by a doctor or other health professional that you have high blood pressure?

			Yes	Yes, female told during pregnancy	No	Told borderline high or pre-hypertensive
Gender	1997	Male	22.4%	0.0%	77.6%	0.0%
		Female	26.2%	0.0%	73.8%	0.0%
	1999	Male	28.4%	0.0%	71.6%	0.0%
		Female	33.1%	0.0%	66.9%	0.0%
	2001	Male	29.4%	0.0%	70.6%	0.0%
		Female	32.9%	0.0%	67.1%	0.0%
	2003	Male	24.4%	1.6%	74.1%	0.0%
		Female	33.0%	0.6%	66.4%	0.0%
	2005	Male	37.0%	0.0%	61.9%	1.1%
		Female	31.9%	1.3%	65.8%	0.9%
	2007	Male	31.2%	0.9%	68.0%	0.0%
		Female	31.2%	5.0%	63.8%	0.0%
	2009	Male	26.1%	1.2%	71.7%	0.9%
		Female	24.5%	5.2%	69.2%	1.1%

Have you ever been told by a doctor or other health professional that  
you have high blood pressure?

			Yes	Yes, female told during pregnancy	No	Told borderline high or pre-hypertensive
Income Level	1997	< \$15K	33.9%	0.0%	66.1%	0.0%
		\$15-25K	27.1%	0.0%	72.9%	0.0%
		\$25-50K	19.2%	0.0%	80.8%	0.0%
		\$50K +	15.5%	0.0%	84.5%	0.0%
	1999	< \$15K	39.1%	0.0%	60.9%	0.0%
		\$15-25K	38.1%	0.0%	61.9%	0.0%
		\$25-50K	22.2%	0.0%	77.8%	0.0%
		\$50K +	22.5%	0.0%	77.5%	0.0%
	2001	< \$15K	45.1%	0.0%	54.9%	0.0%
		\$15-25K	34.6%	0.0%	65.4%	0.0%
		\$25-50K	29.2%	0.0%	70.8%	0.0%
		\$50K +	19.9%	0.0%	80.1%	0.0%
	2003	< \$15K	40.4%	1.9%	57.7%	0.0%
		\$15-25K	30.2%	1.0%	68.8%	0.0%
		\$25-50K	26.0%	0.5%	73.4%	0.0%
		\$50K +	17.6%	0.6%	81.8%	0.0%
	2005	< \$15K	50.0%	0.0%	48.7%	1.3%
		\$15-25K	37.7%	0.0%	61.5%	0.8%
		\$25-50K	32.3%	0.0%	66.7%	1.0%
		\$50K +	22.8%	2.6%	74.1%	0.5%
2007	< \$15K	38.4%	0.0%	61.6%	0.0%	
	\$15-25K	38.6%	1.4%	60.0%	0.0%	
	\$25-50K	24.2%	3.5%	72.2%	0.0%	
	\$50K +	28.0%	4.3%	67.6%	0.0%	
2009	< \$15K	38.3%	0.0%	58.3%	3.3%	
	\$15-25K	24.3%	4.3%	70.0%	1.4%	
	\$25-50K	23.6%	8.1%	67.1%	1.2%	
	\$50K +	31.8%	1.2%	64.7%	2.4%	

Have you ever been told by a doctor or other health professional that  
you have high blood pressure?

			Yes	Yes, female told during pregnancy	No	Told borderline high or pre-hypertensive
Age	1997	18 - 24	9.4%	0.0%	90.6%	0.0%
		25 - 34	5.4%	0.0%	94.6%	0.0%
		35 - 44	16.2%	0.0%	83.8%	0.0%
		45 - 54	27.3%	0.0%	72.7%	0.0%
		55 - 64	31.7%	0.0%	68.3%	0.0%
		65+	46.7%	0.0%	53.3%	0.0%
	1999	18 - 24	3.0%	0.0%	97.0%	0.0%
		25 - 34	8.3%	0.0%	91.7%	0.0%
		35 - 44	22.3%	0.0%	77.7%	0.0%
		45 - 54	28.3%	0.0%	71.7%	0.0%
		55 - 64	45.0%	0.0%	55.0%	0.0%
		65+	57.1%	0.0%	42.9%	0.0%
	2001	18 - 24	10.5%	0.0%	89.5%	0.0%
		25 - 34	10.5%	0.0%	89.5%	0.0%
		35 - 44	17.2%	0.0%	82.8%	0.0%
		45 - 54	33.3%	0.0%	66.7%	0.0%
		55 - 64	49.0%	0.0%	51.0%	0.0%
		65+	50.0%	0.0%	50.0%	0.0%
	2003	18 - 24	7.2%	1.4%	91.3%	0.0%
		25 - 34	6.3%	1.8%	92.0%	0.0%
		35 - 44	13.8%	2.3%	83.8%	0.0%
		45 - 54	33.6%	0.0%	66.4%	0.0%
		55 - 64	50.6%	0.0%	49.4%	0.0%
		65+	52.3%	0.6%	47.1%	0.0%
	2005	18 - 24	5.0%	0.0%	95.0%	0.0%
		25 - 34	15.1%	1.1%	83.9%	0.0%
		35 - 44	13.7%	3.8%	81.7%	0.8%
		45 - 54	31.7%	0.0%	66.7%	1.7%
		55 - 64	46.0%	0.0%	52.0%	2.0%
		65+	54.8%	0.0%	44.2%	0.9%
2007	18 - 24	5.7%	5.7%	88.6%	0.0%	
	25 - 34	9.4%	6.8%	83.8%	0.0%	
	35 - 44	24.0%	2.3%	73.6%	0.0%	
	45 - 54	27.6%	3.4%	69.0%	0.0%	
	55 - 64	41.5%	0.7%	57.7%	0.0%	
	65+	58.1%	1.6%	40.3%	0.0%	
2009	18 - 24	0.0%	1.2%	98.8%	0.0%	
	25 - 34	6.4%	8.2%	84.5%	0.9%	
	35 - 44	12.7%	2.7%	83.6%	0.9%	
	45 - 54	27.5%	3.7%	67.0%	1.8%	
	55 - 64	38.2%	0.0%	58.8%	2.9%	
	65+	48.3%	3.4%	48.3%	0.0%	

---



---

Have you ever been told by a doctor or other health professional that  
you have high blood pressure?

---

			Yes	Yes, female told during pregnancy	No	Told borderline high or pre-hypertensive
Employment Status	1997	Employed	17.8%	0.0%	82.2%	0.0%
		Not Employed	33.9%	0.0%	66.1%	0.0%
	1999	Employed	19.4%	0.0%	80.6%	0.0%
		Not Employed	48.4%	0.0%	51.6%	0.0%
	2001	Employed	20.3%	0.0%	79.7%	0.0%
		Not Employed	45.7%	0.0%	54.3%	0.0%
	2003	Employed	18.4%	1.5%	80.1%	0.0%
		Not Employed	44.4%	0.4%	55.2%	0.0%
	2005	Employed	23.4%	1.5%	74.1%	1.0%
		Not Employed	47.1%	0.0%	51.9%	1.0%
	2007	Employed	19.5%	3.0%	77.4%	0.0%
		Not Employed	53.8%	3.1%	43.0%	0.0%
	2009	Employed	14.6%	2.5%	81.5%	1.4%
		Not Employed	37.0%	4.2%	58.2%	0.6%

---



---

Have you ever been told by a doctor or other health professional that  
you have high blood pressure?

			Yes	Yes, female told during pregnancy	No	Told borderline high or pre-hypertensive
Education	1997	Less than High School	38.3%	0.0%	61.7%	0.0%
		High School Diploma/GED	25.6%	0.0%	74.4%	0.0%
		Some College/Technical	20.4%	0.0%	79.6%	0.0%
		College Degree or Higher	15.9%	0.0%	84.1%	0.0%
	1999	Less than High School	46.9%	0.0%	53.1%	0.0%
		High School Diploma/GED	32.9%	0.0%	67.1%	0.0%
		Some College/Technical	29.8%	0.0%	70.2%	0.0%
		College Degree or Higher	19.7%	0.0%	80.3%	0.0%
	2001	Less than High School	43.3%	0.0%	56.7%	0.0%
		High School Diploma/GED	35.6%	0.0%	64.4%	0.0%
		Some College/Technical	27.4%	0.0%	72.6%	0.0%
		College Degree or Higher	20.5%	0.0%	79.5%	0.0%
	2003	Less than High School	40.5%	2.7%	56.8%	0.0%
		High School Diploma/GED	28.7%	0.4%	70.9%	0.0%
		Some College/Technical	31.5%	1.1%	67.4%	0.0%
		College Degree or Higher	17.9%	1.5%	80.6%	0.0%
2005	Less than High School	48.3%	0.0%	50.0%	1.7%	
	High School Diploma/GED	38.8%	0.0%	60.1%	1.1%	
	Some College/Technical	34.2%	0.0%	65.2%	0.5%	
	College Degree or Higher	22.1%	3.0%	73.9%	1.0%	
2007	Less than High School	55.6%	1.9%	42.6%	0.0%	
	High School Diploma/GED	30.3%	1.9%	67.8%	0.0%	
	Some College/Technical	28.1%	4.0%	67.9%	0.0%	
	College Degree or Higher	27.7%	3.9%	68.4%	0.0%	
2009	Less than High School	36.2%	10.6%	51.1%	2.1%	
	High School Diploma/GED	23.1%	1.6%	74.4%	1.0%	
	Some College/Technical	23.2%	2.9%	73.4%	0.5%	
	College Degree or Higher	30.0%	5.4%	63.1%	1.5%	