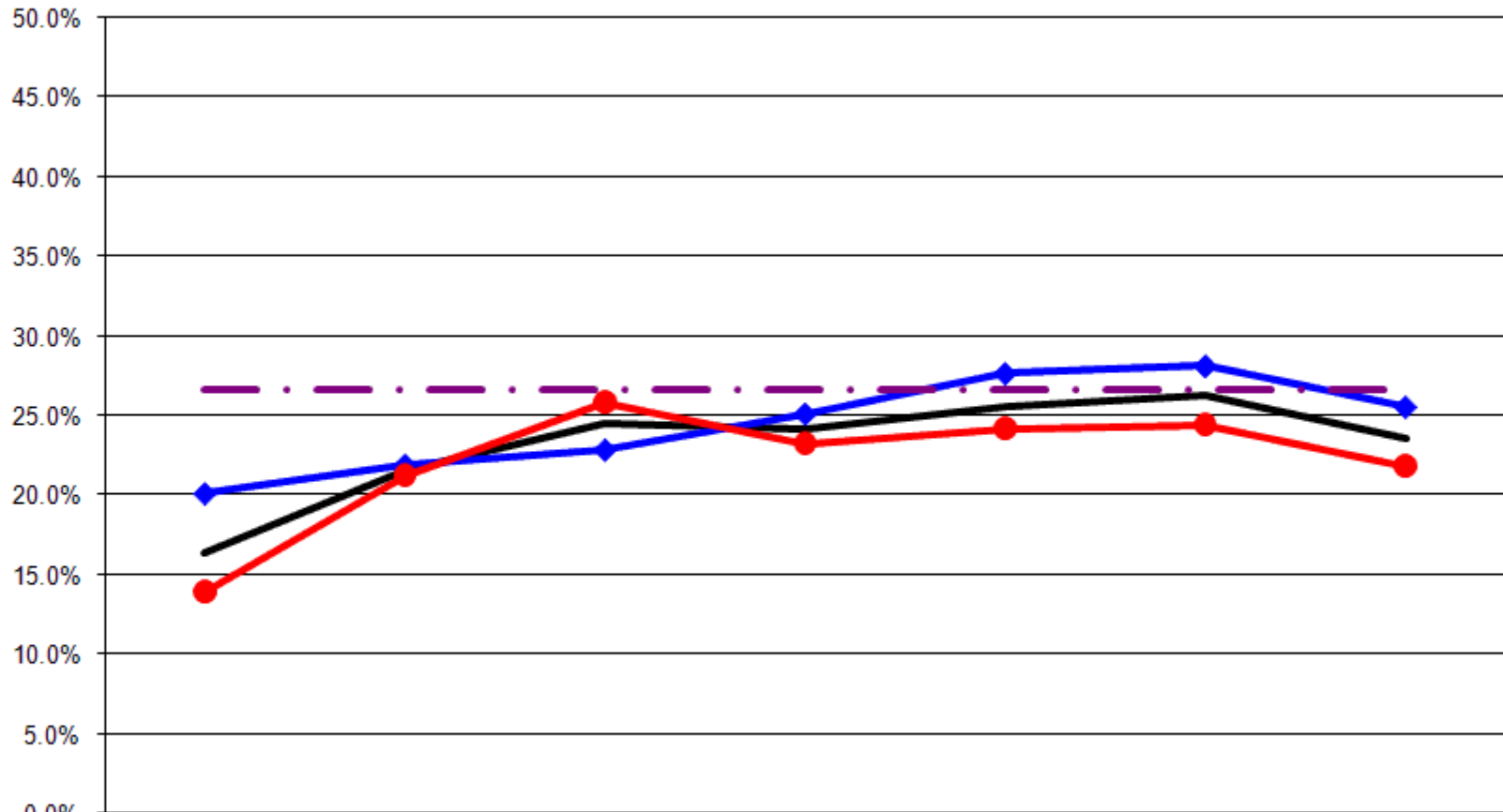


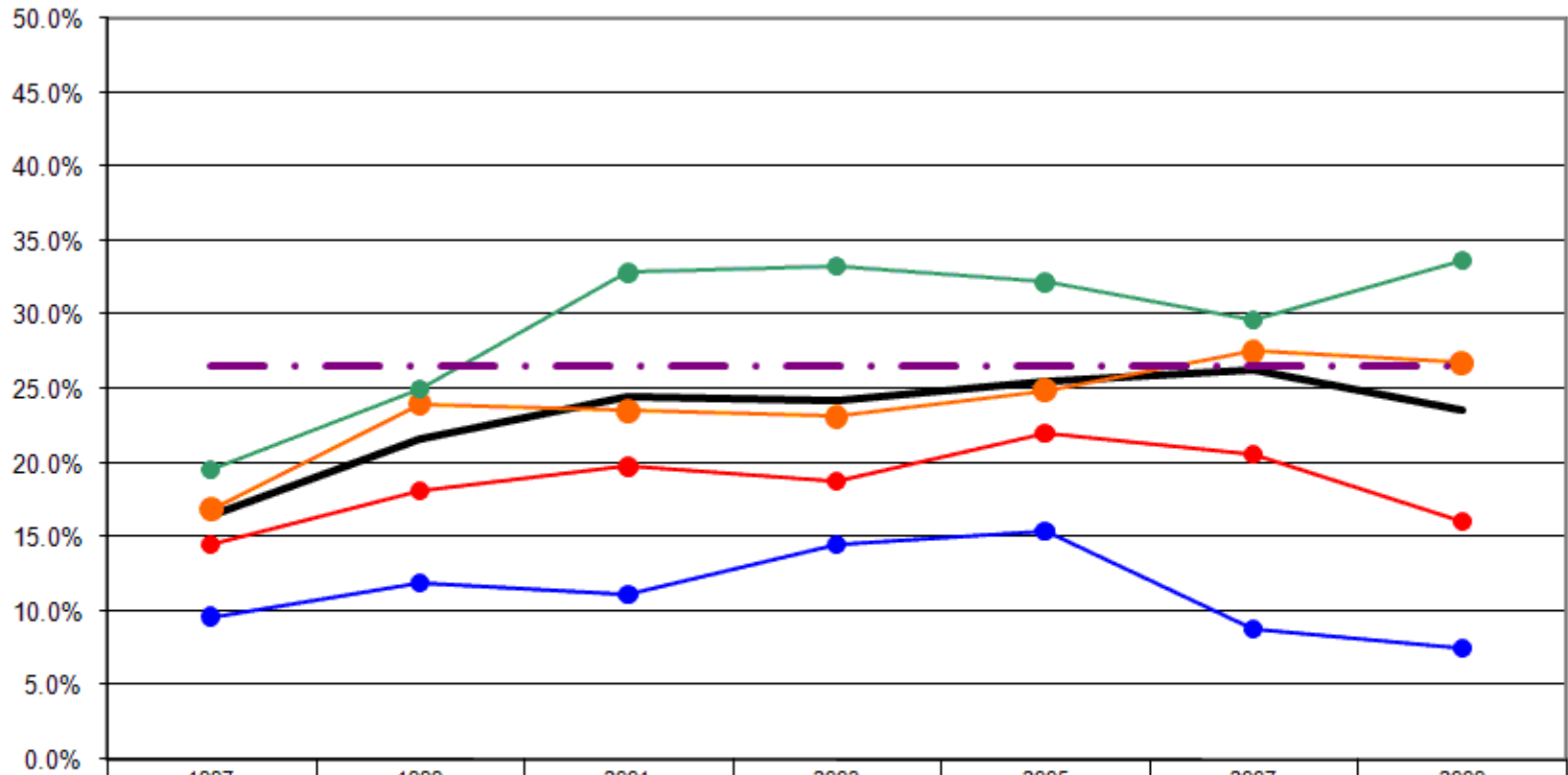
12 Year Review Obesity BMI (Body Mass Index)

Obesity: Body Mass Index 30.0 or Greater By Gender



*Source: 2008 CDC BRFSS

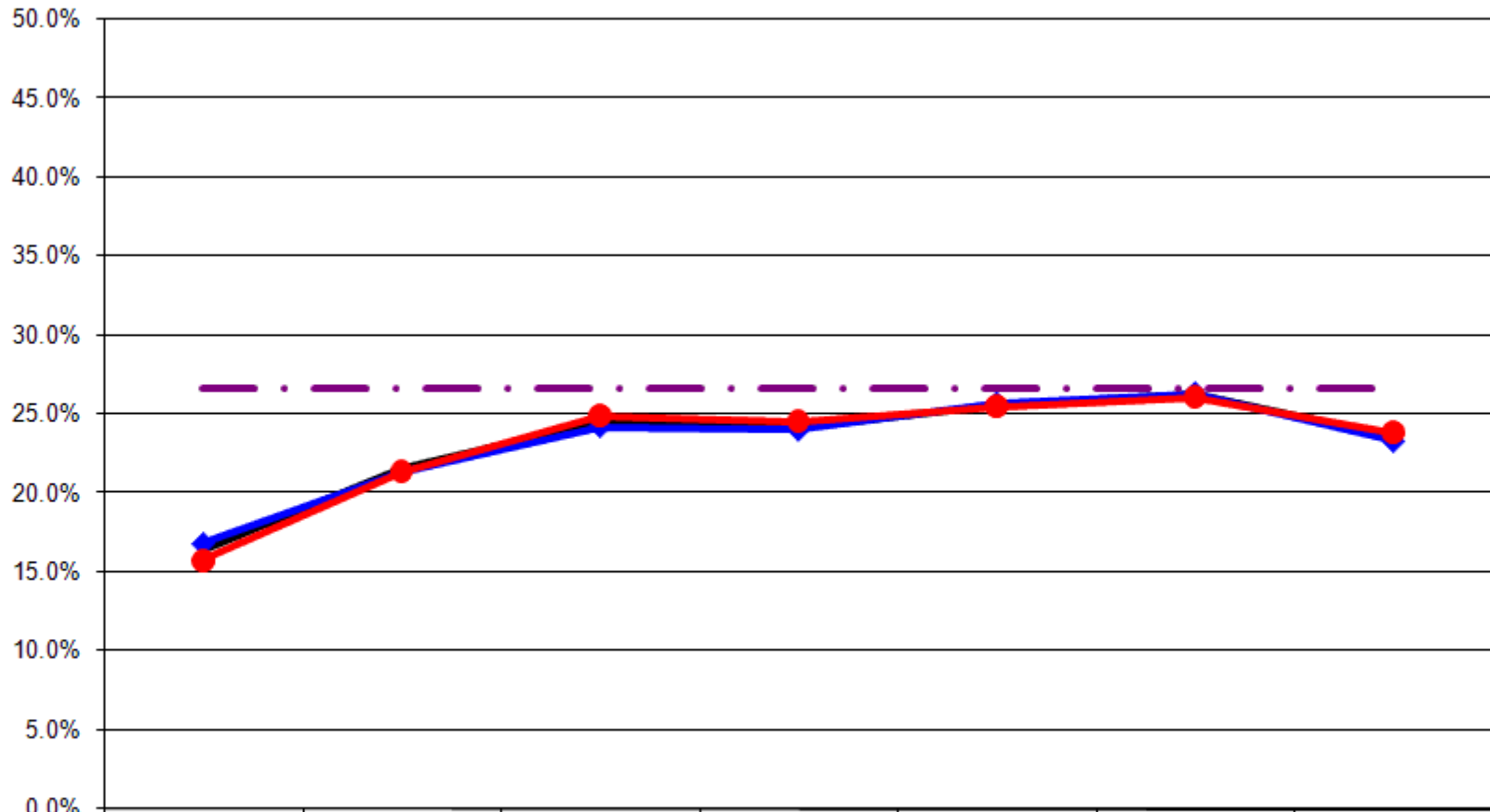
Obesity: Body Mass Index 30.0 or Greater By Age



	1997	1999	2001	2003	2005	2007	2009
— Total	16.4%	21.6%	24.5%	24.2%	25.6%	26.3%	23.6%
—●— 18-24	9.6%	11.9%	11.1%	14.5%	15.4%	8.8%	7.5%
—●— 25-44	16.9%	24.0%	23.5%	23.1%	24.9%	27.5%	26.8%
—●— 45-64	19.6%	25.0%	32.9%	33.3%	32.2%	29.7%	33.7%
—●— 65+	14.5%	18.1%	19.8%	18.8%	22.1%	20.7%	16.0%
- - - - - US Total Rate*							26.6%

*Source: 2008 CDC BRFSS

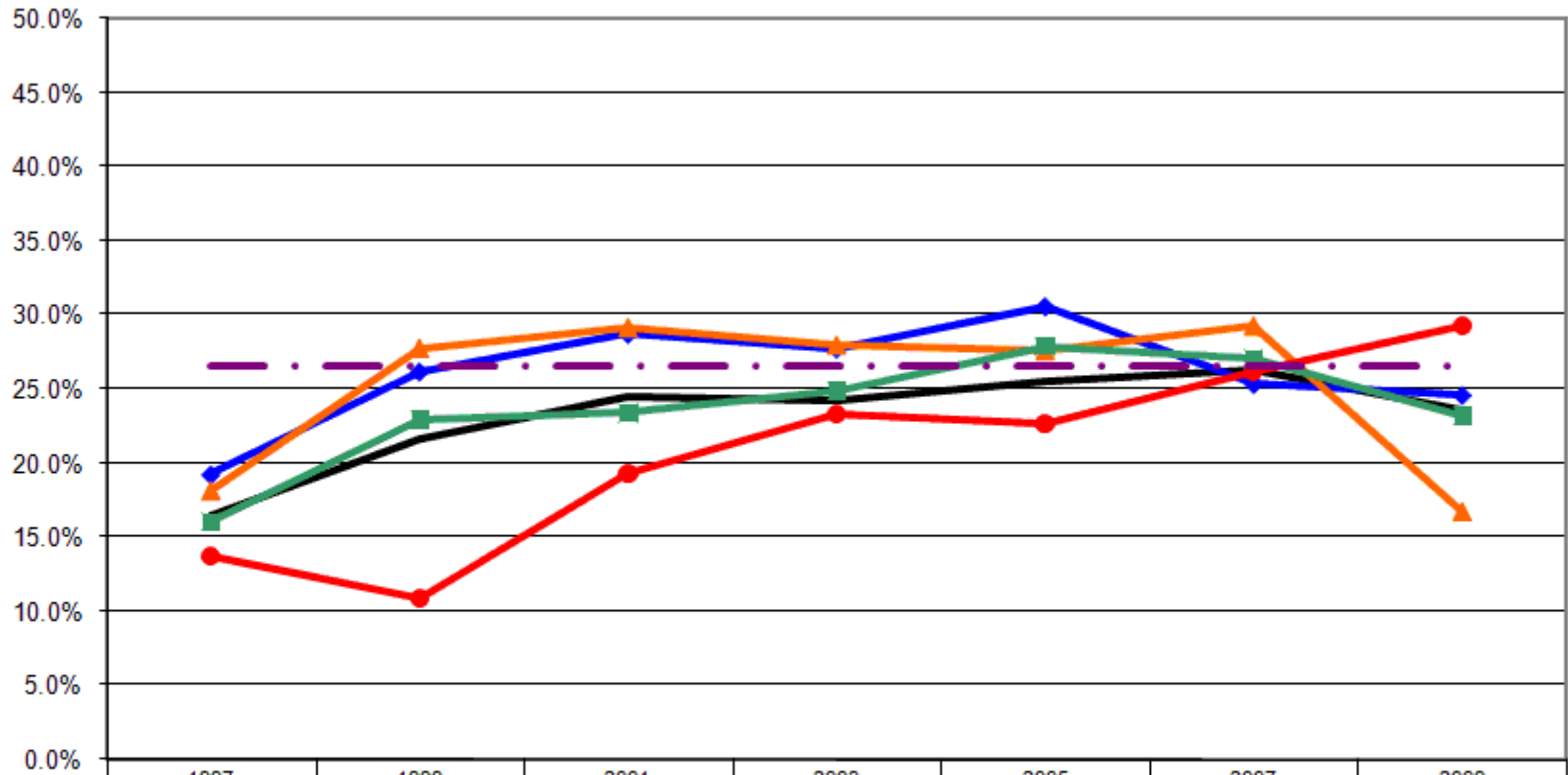
Obesity: Body Mass Index 30.0 or Greater By Employment Status



	1997	1999	2001	2003	2005	2007	2009
— Total	16.4%	21.6%	24.5%	24.2%	25.6%	26.3%	23.6%
—◆— Employed	16.8%	21.4%	24.2%	24.0%	25.7%	26.3%	23.3%
—●— Not Employed	15.8%	21.4%	24.9%	24.6%	25.5%	26.1%	23.9%
-.-.- US Total Rate*							26.6%

*Source: 2008 CDC BRFSS

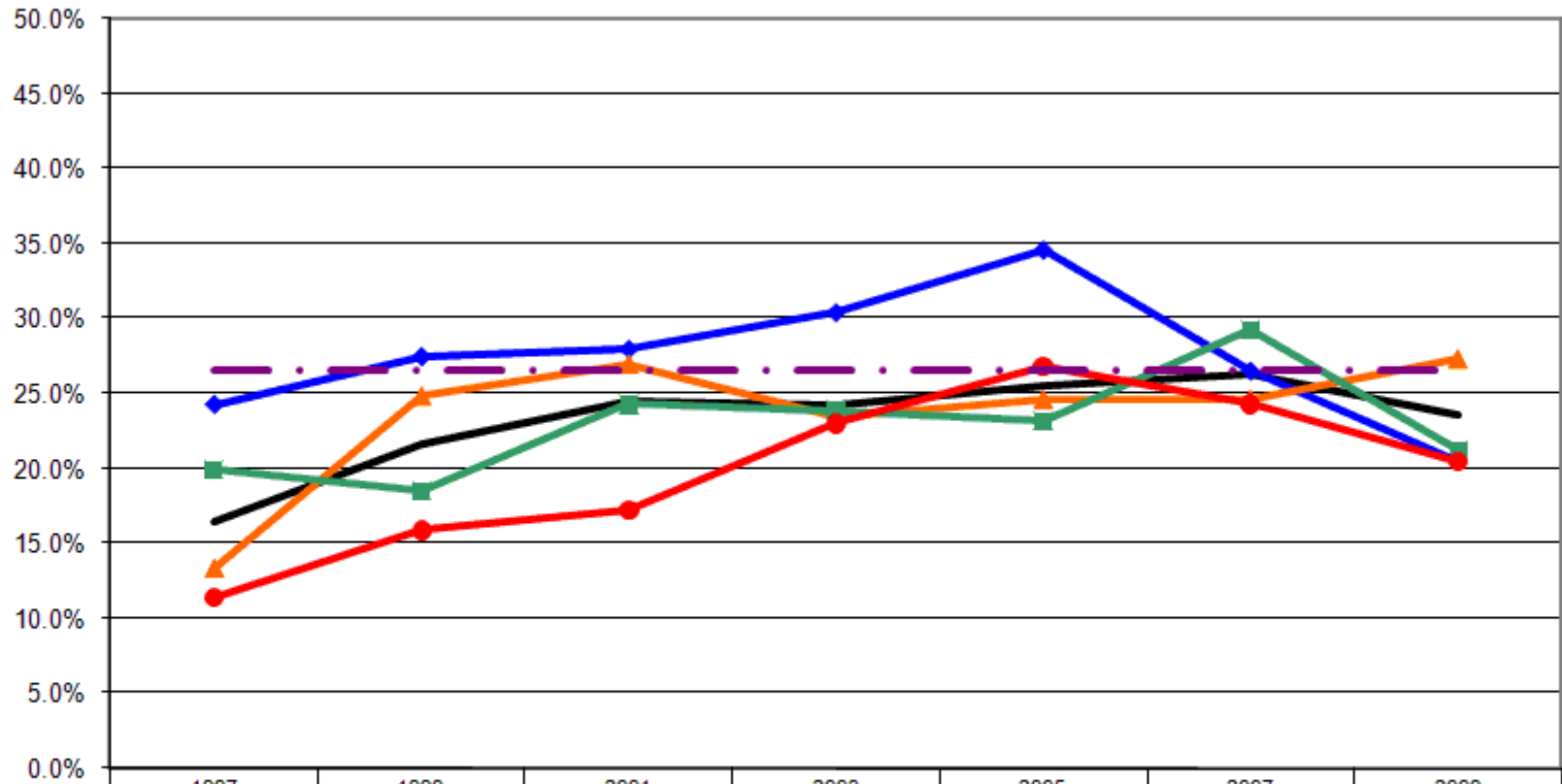
Obesity: Body Mass Index 30.0 or Greater By Income



	1997	1999	2001	2003	2005	2007	2009
— Total	16.4%	21.6%	24.5%	24.2%	25.6%	26.3%	23.6%
—◆— <\$15K	19.3%	26.2%	28.7%	27.7%	30.6%	25.4%	24.6%
—▲— \$15-25K	18.1%	27.7%	29.1%	28.0%	27.6%	29.2%	16.7%
—■— \$25-50K	16.1%	22.9%	23.4%	24.9%	27.9%	27.0%	23.2%
—●— \$50K+	13.7%	10.9%	19.3%	23.4%	22.7%	26.2%	29.3%
-.-.- US Total Rate*							26.6%

*Source: 2008 CDC BRFSS

Obesity: Body Mass Index 30.0 or Greater By Education



	1997	1999	2001	2003	2005	2007	2009
— Total	16.4%	21.6%	24.5%	24.2%	25.6%	26.3%	23.6%
—◆— <HS	24.3%	27.5%	28.0%	30.4%	34.6%	26.5%	20.5%
—▲— HS or GED	13.3%	24.8%	27.0%	23.4%	24.6%	24.6%	27.3%
—■— Some College	19.9%	18.5%	24.3%	23.9%	23.2%	29.2%	21.2%
—●— College Degree +	11.4%	15.9%	17.3%	23.0%	26.8%	24.3%	20.5%
- - - US Total Rate*							26.6%

*Source: 2008 CDC BRFSS

Interview Year 1997

		BMI (Body Mass Index)		
		Healthy (BMI < 24.9)	Overweight (BMI 25.0 to 29.9)	At Risk (BMI > 30.0)
Total		50.2%	34.0%	15.8%
Gender	Male	41.3%	39.3%	19.4%
	Female	56.0%	30.6%	13.4%
Age	18 - 24	56.9%	33.3%	9.8%
	25 - 34	57.0%	31.4%	11.6%
	35 - 44	43.4%	35.7%	20.9%
	45 - 54	37.0%	41.3%	21.7%
	55 - 64	55.0%	28.8%	16.3%
	65+	53.4%	33.6%	13.0%
Employed	Yes	48.9%	34.5%	16.6%
	No	51.9%	33.3%	14.7%
Income	< \$15K	48.1%	34.0%	17.9%
	\$15-25K	44.3%	37.7%	18.0%
	\$25-50K	51.3%	32.6%	16.0%
	\$50K +	51.5%	35.4%	13.1%
Education	Less than High School	44.8%	32.4%	22.9%
	High School Diploma or GED	50.0%	38.1%	11.9%
	Some College/Technical	43.1%	36.6%	20.3%
	College Degree or Higher	64.1%	23.9%	12.0%

Interview Year 1999

		BMI (Body Mass Index)		
		Healthy (BMI < 24.9)	Overweight (BMI 25.0 to 29.9)	At Risk (BMI > 30.0)
Total		48.1%	31.9%	20.0%
Gender	Male	42.3%	37.4%	20.3%
	Female	52.8%	27.5%	19.7%
Age	18 - 24	71.6%	17.9%	10.4%
	25 - 34	53.2%	29.4%	17.4%
	35 - 44	40.9%	32.8%	26.3%
	45 - 54	37.6%	37.6%	24.8%
	55 - 64	39.8%	35.7%	24.5%
	65+	53.3%	32.3%	14.4%
Employed	Yes	46.9%	33.4%	19.7%
	No	50.2%	29.9%	19.9%
Income	< \$15K	45.6%	29.5%	24.8%
	\$15-25K	52.6%	21.9%	25.5%
	\$25-50K	46.3%	32.1%	21.6%
	\$50K +	48.7%	41.2%	10.1%
Education	Less than High School	46.3%	26.3%	27.5%
	High School Diploma or GED	42.1%	34.5%	23.4%
	Some College/Technical	51.7%	31.8%	16.6%
	College Degree or Higher	56.3%	30.2%	13.5%

Interview Year 2001

		BMI (Body Mass Index)		
		Healthy (BMI < 24.9)	Overweight (BMI 25.0 to 29.9)	At Risk (BMI > 30.0)
Total		43.0%	33.8%	23.2%
Gender	Male	39.3%	38.4%	22.3%
	Female	46.2%	29.8%	24.0%
Age	18 - 24	59.3%	29.6%	11.1%
	25 - 34	44.0%	38.0%	18.0%
	35 - 44	43.5%	31.2%	25.4%
	45 - 54	27.4%	40.7%	31.9%
	55 - 64	35.6%	34.4%	30.0%
	65+	51.6%	29.7%	18.7%
Employed	Yes	40.1%	37.2%	22.7%
	No	46.6%	29.4%	23.9%
Income	< \$15K	44.7%	27.7%	27.7%
	\$15-25K	44.9%	27.6%	27.6%
	\$25-50K	42.5%	34.9%	22.6%
	\$50K +	42.7%	39.3%	18.0%
Education	Less than High School	48.0%	26.0%	26.0%
	High School Diploma or GED	40.2%	34.4%	25.4%
	Some College/Technical	45.6%	31.1%	23.3%
	College Degree or Higher	41.0%	42.4%	16.5%

Interview Year 2003

		BMI (Body Mass Index)		
		Healthy (BMI < 24.9)	Overweight (BMI 25.0 to 29.9)	At Risk (BMI > 30.0)
Total		41.1%	34.7%	24.2%
Gender	Male	32.8%	42.0%	25.2%
	Female	49.4%	27.4%	23.2%
Age	18 - 24	65.2%	20.3%	14.5%
	25 - 34	42.7%	33.0%	24.3%
	35 - 44	37.3%	40.5%	22.2%
	45 - 54	29.2%	36.8%	34.0%
	55 - 64	35.0%	32.5%	32.5%
	65+	43.8%	37.5%	18.8%
Employed	Yes	38.8%	37.2%	24.0%
	No	44.7%	30.7%	24.6%
Income	< \$15K	47.5%	24.8%	27.7%
	\$15-25K	46.2%	25.8%	28.0%
	\$25-50K	34.6%	40.5%	24.9%
	\$50K +	35.1%	41.6%	23.4%
Education	Less than High School	39.1%	30.4%	30.4%
	High School Diploma or GED	41.0%	35.5%	23.4%
	Some College/Technical	40.3%	35.8%	23.9%
	College Degree or Higher	42.9%	34.1%	23.0%

Interview Year 2005

		BMI (Body Mass Index)		
		Healthy (BMI < 24.9)	Overweight (BMI 25.0 to 29.9)	At Risk (BMI > 30.0)
Total		39.3%	35.1%	25.6%
Gender	Male	27.7%	44.6%	27.7%
	Female	46.7%	29.1%	24.2%
Age	18 - 24	61.5%	23.1%	15.4%
	25 - 34	37.5%	37.5%	25.0%
	35 - 44	44.8%	30.4%	24.8%
	45 - 54	27.2%	39.5%	33.3%
	55 - 64	30.9%	38.3%	30.9%
	65+	42.6%	35.3%	22.1%
Employed	Yes	35.4%	38.9%	25.7%
	No	44.3%	30.2%	25.5%
Income	< \$15K	30.6%	38.9%	30.6%
	\$15-25K	38.8%	33.6%	27.6%
	\$25-50K	39.3%	32.8%	27.9%
	\$50K +	38.4%	38.9%	22.7%
Education	Less than High School	28.8%	36.5%	34.6%
	High School Diploma or GED	36.3%	39.1%	24.6%
	Some College/Technical	41.2%	35.6%	23.2%
	College Degree or Higher	43.7%	29.5%	26.8%

Interview Year 2007

		BMI (Body Mass Index)		
		Healthy (BMI < 24.9)	Overweight (BMI 25.0 to 29.9)	At Risk (BMI > 30.0)
Total		31.8%	41.9%	26.3%
Gender	Male	24.1%	47.7%	28.2%
	Female	39.1%	36.4%	24.5%
Age	18 - 24	64.7%	26.5%	8.8%
	25 - 34	41.6%	37.2%	21.2%
	35 - 44	28.5%	38.2%	33.3%
	45 - 54	27.4%	47.4%	25.2%
	55 - 64	16.8%	48.9%	34.4%
	65+	38.0%	41.3%	20.7%
Employed	Yes	29.7%	44.0%	26.3%
	No	34.0%	39.9%	26.1%
Income	< \$15K	33.8%	40.8%	25.4%
	\$15-25K	40.0%	30.8%	29.2%
	\$25-50K	25.7%	47.3%	27.0%
	\$50K +	29.7%	44.1%	26.2%
Education	Less than High School	38.8%	34.7%	26.5%
	High School Diploma or GED	31.5%	44.0%	24.6%
	Some College/Technical	32.5%	38.2%	29.2%
	College Degree or Higher	29.1%	46.6%	24.3%

Interview Year 2009

		BMI (Body Mass Index)		
		Healthy (BMI < 24.9)	Overweight (BMI 25.0 to 29.9)	At Risk (BMI > 30.0)
Total		35.0%	41.4%	23.6%
Gender	Male	23.9%	50.5%	25.6%
	Female	45.2%	33.0%	21.8%
Age	18 - 24	45.0%	47.5%	7.5%
	25 - 34	41.0%	36.0%	23.0%
	35 - 44	27.6%	41.8%	30.6%
	45 - 54	22.9%	45.8%	31.3%
	55 - 64	25.5%	38.3%	36.2%
	65+	43.2%	40.7%	16.0%
Employed	Yes	32.5%	44.2%	23.3%
	No	37.7%	38.4%	23.9%
Income	< \$15K	38.6%	36.8%	24.6%
	\$15-25K	39.4%	43.9%	16.7%
	\$25-50K	31.0%	45.8%	23.2%
	\$50K +	34.1%	36.6%	29.3%
Education	Less than High School	45.5%	34.1%	20.5%
	High School Diploma or GED	28.0%	44.7%	27.3%
	Some College/Technical	38.6%	40.2%	21.2%
	College Degree or Higher	41.0%	38.5%	20.5%

			BMI (Body Mass Index)		
			Healthy (BMI < 24.9)	Overweight (BMI 25.0 to 29.9)	At Risk (BMI > 30.0)
Gender	1997	Male	37.5%	42.3%	20.2%
		Female	54.8%	31.3%	14.0%
	1999	Male	38.1%	40.0%	21.9%
		Female	51.3%	27.5%	21.2%
	2001	Male	33.1%	44.0%	22.9%
		Female	44.9%	29.3%	25.9%
	2003	Male	32.8%	42.0%	25.2%
		Female	49.4%	27.4%	23.2%
	2005	Male	27.7%	44.6%	27.7%
		Female	46.7%	29.1%	24.2%
	2007	Male	24.1%	47.7%	28.2%
		Female	39.1%	36.4%	24.5%
	2009	Male	23.9%	50.5%	25.6%
		Female	45.2%	33.0%	21.8%

			BMI (Body Mass Index)		
			Healthy (BMI < 24.9)	Overweight (BMI 25.0 to 29.9)	At Risk (BMI > 30.0)
Income Level	1997	< \$15K	46.0%	34.8%	19.3%
		\$15-25K	40.9%	40.9%	18.1%
		\$25-50K	48.2%	35.8%	16.1%
		\$50K +	52.0%	34.3%	13.7%
	1999	< \$15K	43.6%	30.2%	26.2%
		\$15-25K	50.4%	21.9%	27.7%
		\$25-50K	43.6%	33.5%	22.9%
		\$50K +	44.5%	44.5%	10.9%
	2001	< \$15K	40.4%	30.9%	28.7%
		\$15-25K	43.3%	27.6%	29.1%
		\$25-50K	37.7%	38.9%	23.4%
		\$50K +	40.0%	40.7%	19.3%
	2003	< \$15K	47.5%	24.8%	27.7%
		\$15-25K	46.2%	25.8%	28.0%
		\$25-50K	34.6%	40.5%	24.9%
		\$50K +	35.1%	41.6%	23.4%
	2005	< \$15K	30.6%	38.9%	30.6%
		\$15-25K	38.8%	33.6%	27.6%
		\$25-50K	39.3%	32.8%	27.9%
		\$50K +	38.4%	38.9%	22.7%
2007	< \$15K	33.8%	40.8%	25.4%	
	\$15-25K	40.0%	30.8%	29.2%	
	\$25-50K	25.7%	47.3%	27.0%	
	\$50K +	29.7%	44.1%	26.2%	
2009	< \$15K	38.6%	36.8%	24.6%	
	\$15-25K	39.4%	43.9%	16.7%	
	\$25-50K	31.0%	45.8%	23.2%	
	\$50K +	34.1%	36.6%	29.3%	

			BMI (Body Mass Index)		
			Healthy (BMI < 24.9)	Overweight (BMI 25.0 to 29.9)	At Risk (BMI > 30.0)
Age	1997	18 - 24	57.7%	32.7%	9.6%
		25 - 34	52.4%	35.5%	12.1%
		35 - 44	41.2%	37.4%	21.4%
		45 - 54	35.7%	41.8%	22.4%
		55 - 64	55.6%	28.4%	16.0%
		65+	50.0%	35.5%	14.5%
	1999	18 - 24	71.6%	16.4%	11.9%
		25 - 34	48.6%	31.2%	20.2%
		35 - 44	37.2%	35.8%	27.0%
		45 - 54	35.9%	37.6%	26.5%
		55 - 64	36.7%	37.8%	25.5%
		65+	50.9%	32.9%	16.2%
	2001	18 - 24	55.6%	33.3%	11.1%
		25 - 34	42.0%	40.0%	18.0%
		35 - 44	41.3%	31.2%	27.5%
		45 - 54	22.2%	43.7%	34.1%
		55 - 64	32.2%	36.7%	31.1%
		65+	47.3%	33.0%	19.8%
	2003	18 - 24	65.2%	20.3%	14.5%
		25 - 34	42.7%	33.0%	24.3%
		35 - 44	37.3%	40.5%	22.2%
		45 - 54	29.2%	36.8%	34.0%
		55 - 64	35.0%	32.5%	32.5%
		65+	43.8%	37.5%	18.8%
	2005	18 - 24	61.5%	23.1%	15.4%
		25 - 34	37.5%	37.5%	25.0%
		35 - 44	44.8%	30.4%	24.8%
		45 - 54	27.2%	39.5%	33.3%
		55 - 64	30.9%	38.3%	30.9%
		65+	42.6%	35.3%	22.1%
2007	18 - 24	64.7%	26.5%	8.8%	
	25 - 34	41.6%	37.2%	21.2%	
	35 - 44	28.5%	38.2%	33.3%	
	45 - 54	27.4%	47.4%	25.2%	
	55 - 64	16.8%	48.9%	34.4%	
	65+	38.0%	41.3%	20.7%	
2009	18 - 24	45.0%	47.5%	7.5%	
	25 - 34	41.0%	36.0%	23.0%	
	35 - 44	27.6%	41.8%	30.6%	
	45 - 54	22.9%	45.8%	31.3%	
	55 - 64	25.5%	38.3%	36.2%	
	65+	43.2%	40.7%	16.0%	

			BMI (Body Mass Index)		
			Healthy (BMI < 24.9)	Overweight (BMI 25.0 to 29.9)	At Risk (BMI > 30.0)
Employment Status	1997	Employed	46.8%	36.4%	16.8%
		Unemployed	49.6%	34.6%	15.8%
	1999	Employed	44.2%	34.4%	21.4%
		Unemployed	47.6%	31.0%	21.4%
	2001	Employed	37.2%	38.5%	24.2%
		Unemployed	42.1%	33.0%	24.9%
	2003	Employed	38.8%	37.2%	24.0%
		Unemployed	44.7%	30.7%	24.6%
	2005	Employed	35.4%	38.9%	25.7%
		Unemployed	44.3%	30.2%	25.5%
	2007	Employed	29.7%	44.0%	26.3%
		Unemployed	34.0%	39.9%	26.1%
	2009	Employed	32.5%	44.2%	23.3%
		Unemployed	37.7%	38.4%	23.9%

			BMI (Body Mass Index)		
			Healthy (BMI < 24.9)	Overweight (BMI 25.0 to 29.9)	At Risk (BMI > 30.0)
Education Level	1997	Less than High School	39.3%	36.4%	24.3%
		High School Diploma or GED	50.0%	36.7%	13.3%
		Some College/Technical	42.2%	37.9%	19.9%
		College Degree or Higher	58.5%	30.1%	11.4%
	1999	Less than High School	46.3%	26.3%	27.5%
		High School Diploma or GED	38.8%	36.3%	24.8%
		Some College/Technical	49.3%	32.2%	18.5%
		College Degree or Higher	52.4%	31.7%	15.9%
	2001	Less than High School	45.0%	27.0%	28.0%
		High School Diploma or GED	36.3%	36.7%	27.0%
		Some College/Technical	42.7%	33.0%	24.3%
		College Degree or Higher	36.7%	46.0%	17.3%
	2003	Less than High School	39.1%	30.4%	30.4%
		High School Diploma or GED	41.0%	35.5%	23.4%
		Some College/Technical	40.3%	35.8%	23.9%
		College Degree or Higher	42.9%	34.1%	23.0%
2005	Less than High School	28.8%	36.5%	34.6%	
	High School Diploma or GED	36.3%	39.1%	24.6%	
	Some College/Technical	41.2%	35.6%	23.2%	
	College Degree or Higher	43.7%	29.5%	26.8%	
2007	Less than High School	38.8%	34.7%	26.5%	
	High School Diploma or GED	31.5%	44.0%	24.6%	
	Some College/Technical	32.5%	38.2%	29.2%	
	College Degree or Higher	29.1%	46.6%	24.3%	
2009	Less than High School	45.5%	34.1%	20.5%	
	High School Diploma or GED	28.0%	44.7%	27.3%	
	Some College/Technical	38.6%	40.2%	21.2%	
	College Degree or Higher	41.0%	38.5%	20.5%	