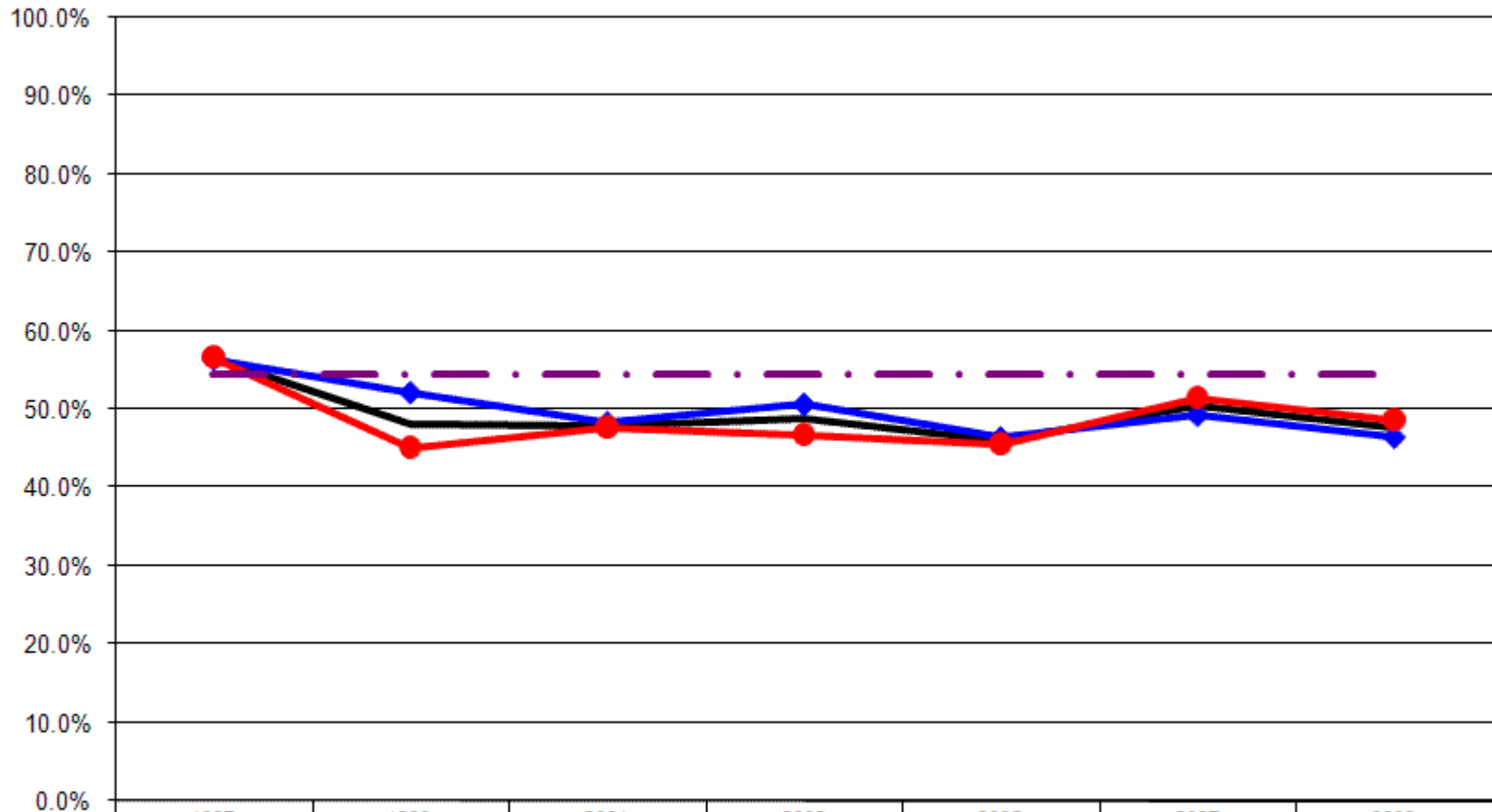


12 Year Review Health Status

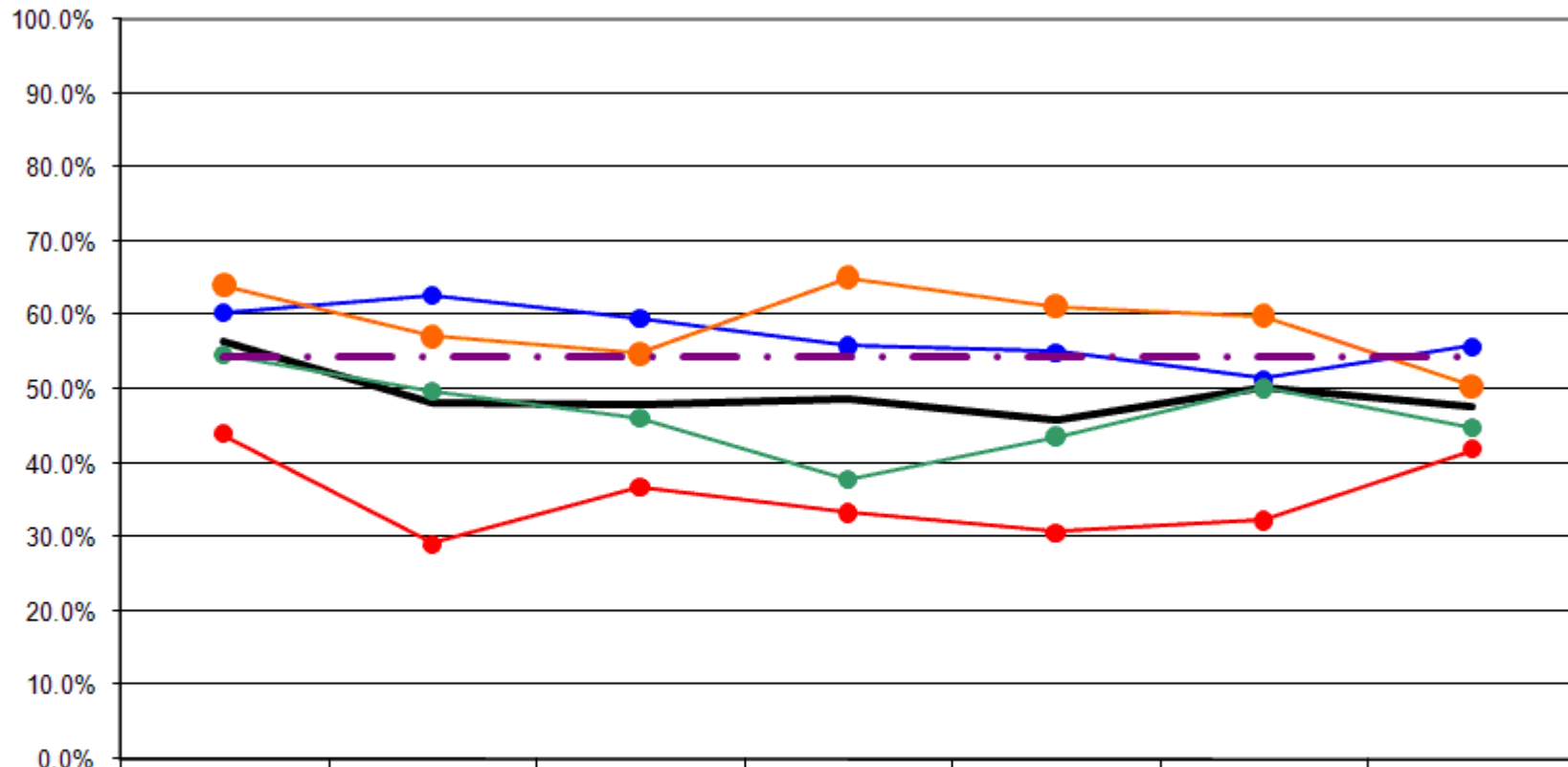
General Health: Excellent & Very Good % By Gender



	1997	1999	2001	2003	2005	2007	2009
— Total	56.5%	48.1%	47.9%	48.6%	45.9%	50.4%	47.6%
—◆— Male	56.4%	52.1%	48.3%	50.6%	46.4%	49.3%	46.5%
—●— Female	56.6%	45.0%	47.6%	46.7%	45.6%	51.5%	48.6%
-.-.- US Total Rate*							54.5%

* Source: CDC 2008 BRFSS

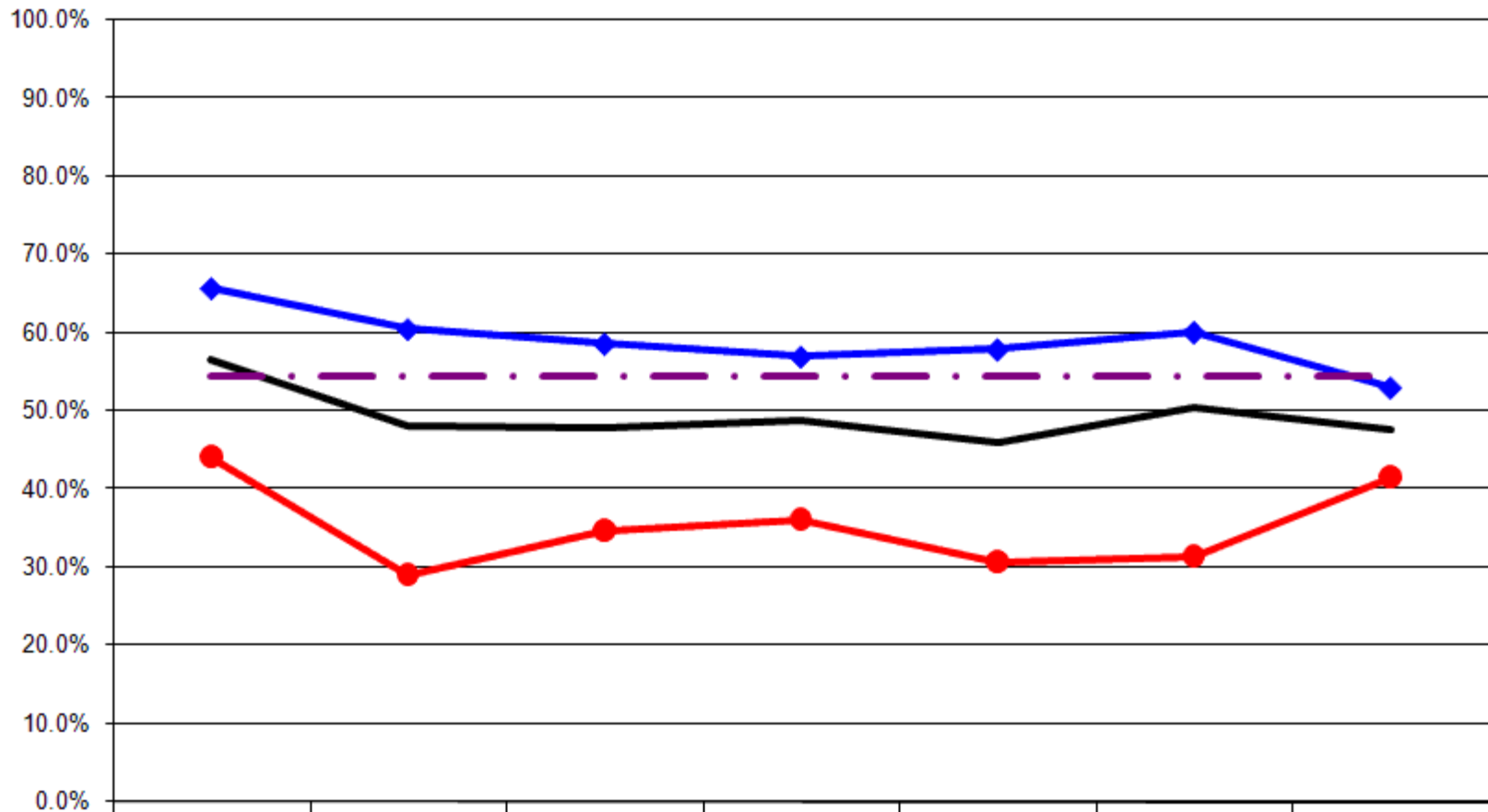
General Health: Excellent & Very Good % By Age



	1997	1999	2001	2003	2005	2007	2009
— Total	56.5%	48.1%	47.9%	48.6%	45.9%	50.4%	47.6%
● 18-24	60.4%	62.7%	59.6%	55.9%	55.0%	51.4%	55.8%
● 25-44	64.2%	57.2%	54.8%	65.1%	61.2%	60.0%	50.4%
● 45-64	54.7%	49.8%	46.2%	37.8%	43.6%	50.2%	44.8%
● 65+	43.9%	29.2%	36.8%	33.3%	30.7%	32.3%	41.9%
- - - US Total Rate*							54.5%

*Source: 2008 CDC BRFSS

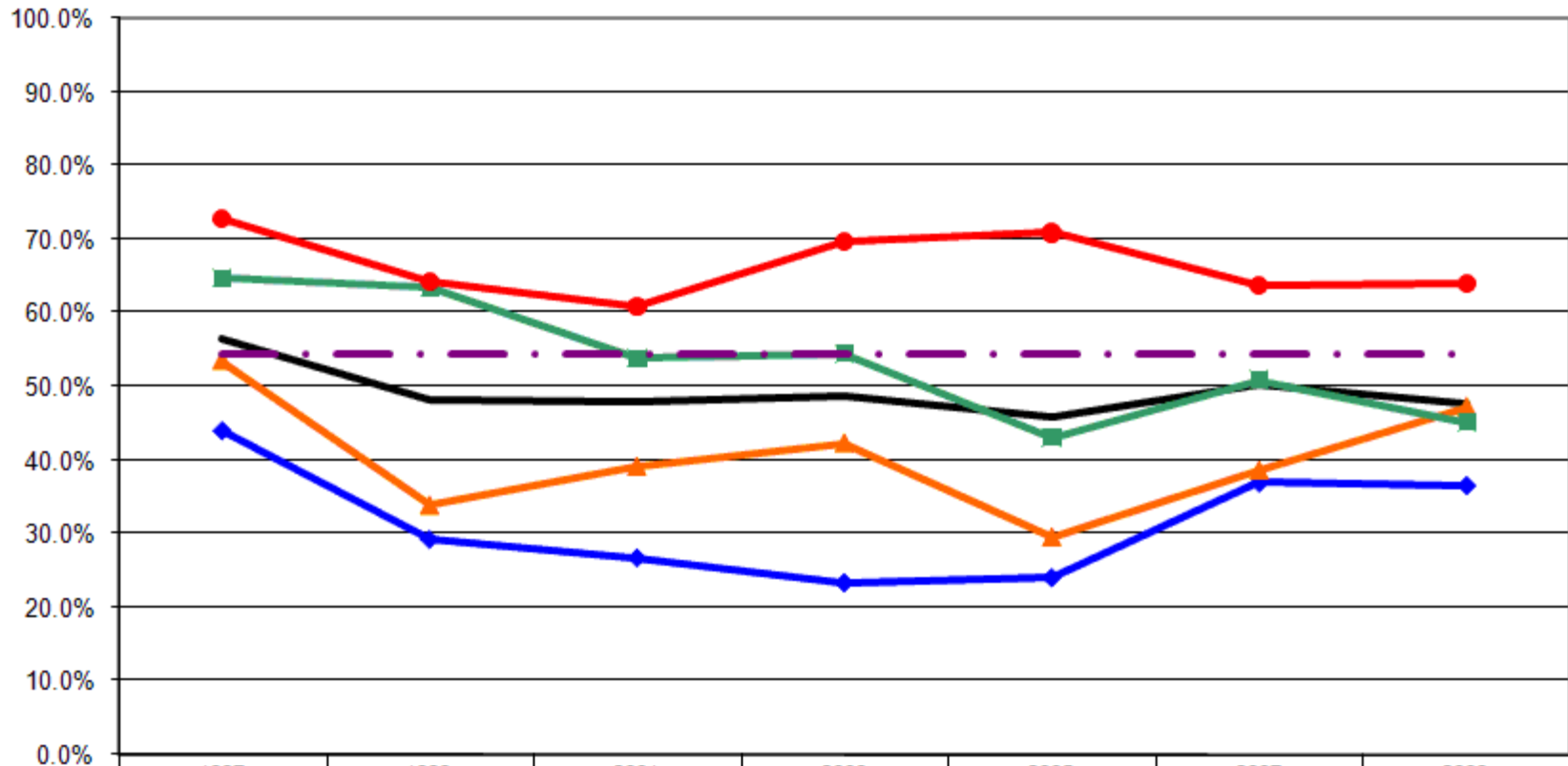
General Health: Excellent & Very Good % By Employment Status



	1997	1999	2001	2003	2005	2007	2009
— Total	56.5%	48.1%	47.9%	48.6%	45.9%	50.4%	47.6%
—◆— Employed	65.7%	60.5%	58.6%	57.0%	57.9%	60.1%	53.0%
—●— Not Employed	44.2%	29.1%	34.8%	36.1%	30.8%	31.4%	41.7%
-.-.- US Total Rate*							54.5%

Source: 2008 CDC BRFSS

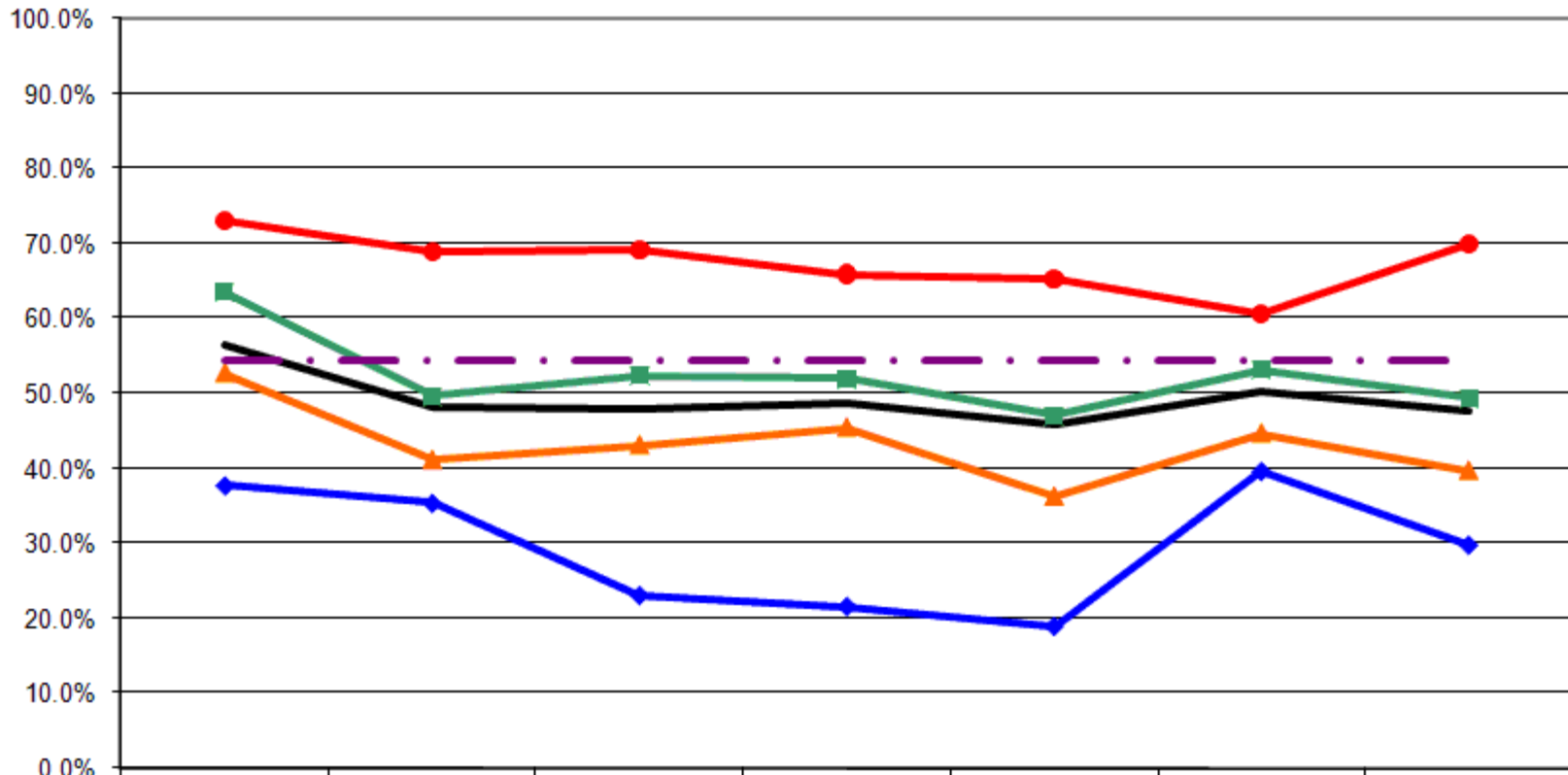
General Health: Excellent & Very Good % By Income



	1997	1999	2001	2003	2005	2007	2009
— Total	56.5%	48.1%	47.9%	48.6%	45.9%	50.4%	47.6%
—◆— <\$15K	44.1%	29.2%	26.7%	23.3%	24.0%	37.0%	36.6%
—▲— \$15-25K	53.5%	33.8%	39.1%	42.3%	29.5%	38.6%	47.2%
—■— \$25-50K	64.6%	63.3%	53.8%	54.5%	43.1%	50.9%	45.1%
—●— \$50K+	72.8%	64.2%	60.9%	69.8%	70.9%	63.8%	64.0%
- - - US Total Rate*							54.5%

*Source: 2008 CDC BRFSS

General Health: Excellent & Very Good % By Education



	1997	1999	2001	2003	2005	2007	2009
— Total	56.5%	48.1%	47.9%	48.6%	45.9%	50.4%	47.6%
—◆— <HS	37.7%	35.4%	23.1%	21.6%	19.0%	39.6%	29.8%
—▲— HS or GED	52.7%	41.1%	43.1%	45.5%	36.3%	44.7%	39.7%
—■— Some College	63.5%	49.5%	52.4%	51.9%	47.1%	53.1%	49.3%
—●— College Degree +	73.0%	68.9%	69.2%	65.9%	65.3%	60.6%	70.0%
-.-.- US Total Rate*							54.5%

*Source: 2008 CDC BRFSS

Interview Year 1997

		Would you say that in general your health is:				
		Excellent	Very Good	Good	Fair	Poor
Total		20.1%	36.4%	28.0%	10.6%	4.8%
Gender	Male	23.6%	32.8%	28.6%	9.7%	5.4%
	Female	17.9%	38.7%	27.7%	11.3%	4.4%
Age	18 - 24	17.0%	43.4%	32.1%	7.5%	0.0%
	25 - 34	20.2%	46.5%	24.8%	8.5%	0.0%
	35 - 44	23.5%	38.2%	31.6%	5.1%	1.5%
	45 - 54	27.3%	29.3%	32.3%	5.1%	6.1%
	55 - 64	18.3%	34.1%	22.0%	13.4%	12.2%
	65+	14.0%	29.9%	27.4%	20.1%	8.5%
Employed	Yes	24.6%	41.1%	27.2%	6.5%	0.5%
	No	14.0%	30.2%	29.1%	16.1%	10.5%
Income	< \$15K	10.0%	34.1%	27.6%	17.1%	11.2%
	\$15-25K	15.5%	38.0%	25.6%	15.5%	5.4%
	\$25-50K	24.2%	40.4%	30.3%	3.5%	1.5%
	\$50K +	32.0%	40.8%	22.3%	4.9%	0.0%
Education	Less than High School	12.3%	25.4%	26.3%	25.4%	10.5%
	High School Diploma or GED	16.3%	36.4%	31.0%	10.1%	6.2%
	Some College/Technical	22.2%	41.3%	28.1%	6.0%	2.4%
	College Degree or Higher	32.5%	40.5%	23.0%	4.0%	0.0%

Interview Year 1999

		Would you say that in general your health is:				
		Excellent	Very Good	Good	Fair	Poor
Total		17.5%	30.6%	33.7%	13.3%	4.9%
Gender	Male	20.9%	31.2%	28.9%	12.9%	6.1%
	Female	14.9%	30.2%	37.4%	13.6%	4.0%
Age	18 - 24	20.9%	41.8%	29.9%	7.5%	0.0%
	25 - 34	22.9%	41.3%	31.2%	2.8%	1.8%
	35 - 44	22.0%	29.8%	33.3%	12.8%	2.1%
	45 - 54	17.5%	30.8%	32.5%	13.3%	5.8%
	55 - 64	21.2%	30.3%	33.3%	9.1%	6.1%
	65+	6.8%	20.5%	38.6%	24.4%	9.7%
Employed	Yes	24.1%	36.4%	30.4%	8.2%	1.0%
	No	7.8%	21.3%	40.1%	20.2%	10.6%
Income	< \$15K	9.1%	20.1%	40.3%	22.7%	7.8%
	\$15-25K	10.8%	23.0%	38.8%	19.4%	7.9%
	\$25-50K	25.3%	38.0%	27.1%	7.7%	1.8%
	\$50K +	24.2%	40.0%	30.0%	3.3%	2.5%
Education	Less than High School	14.6%	20.7%	29.3%	23.2%	12.2%
	High School Diploma or GED	13.5%	27.7%	38.3%	16.0%	4.6%
	Some College/Technical	16.1%	33.5%	36.7%	10.1%	3.7%
	College Degree or Higher	30.3%	38.6%	22.0%	6.8%	2.3%

Interview Year 2001

		Would you say that in general your health is:				
		Excellent	Very Good	Good	Fair	Poor
Total		14.7%	33.2%	33.9%	11.7%	6.5%
Gender	Male	17.6%	30.7%	34.0%	9.7%	7.9%
	Female	12.4%	35.2%	33.7%	13.3%	5.3%
Age	18 - 24	26.3%	33.3%	36.8%	3.5%	0.0%
	25 - 34	18.1%	40.0%	32.4%	8.6%	1.0%
	35 - 44	18.6%	33.8%	35.9%	9.7%	2.1%
	45 - 54	15.3%	37.2%	28.5%	13.1%	5.8%
	55 - 64	12.4%	24.7%	40.2%	13.4%	9.3%
	65+	6.8%	30.0%	33.2%	15.8%	14.2%
Employed	Yes	20.3%	38.3%	34.6%	6.3%	0.5%
	No	7.7%	27.1%	32.9%	18.5%	13.8%
Income	< \$15K	7.9%	18.8%	35.6%	23.8%	13.9%
	\$15-25K	16.5%	22.6%	33.8%	14.3%	12.8%
	\$25-50K	13.3%	40.5%	33.0%	10.2%	3.0%
	\$50K +	23.1%	37.8%	32.1%	5.8%	1.3%
Education	Less than High School	5.8%	17.3%	31.7%	25.0%	20.2%
	High School Diploma or GED	9.4%	33.7%	38.4%	13.0%	5.4%
	Some College/Technical	17.5%	34.9%	35.8%	8.5%	3.3%
	College Degree or Higher	27.4%	41.8%	24.0%	4.1%	2.7%

Interview Year 2003

		Would you say that in general your health is:				
		Excellent	Very Good	Good	Fair	Poor
Total		19.4%	29.3%	32.3%	14.5%	4.6%
Gender	Male	20.9%	29.7%	33.4%	11.3%	4.7%
	Female	17.9%	28.9%	31.3%	17.6%	4.5%
Age	18 - 24	25.0%	30.9%	38.2%	2.9%	2.9%
	25 - 34	28.8%	43.2%	22.5%	5.4%	0.0%
	35 - 44	24.6%	34.6%	28.5%	9.2%	3.1%
	45 - 54	20.2%	19.3%	38.5%	16.5%	5.5%
	55 - 64	13.1%	22.6%	34.5%	16.7%	13.1%
	65+	8.5%	24.8%	34.0%	28.1%	4.6%
Employed	Yes	24.8%	32.2%	32.4%	8.6%	2.0%
	No	10.6%	25.5%	32.2%	23.5%	8.2%
Income	< \$15K	7.8%	15.5%	33.0%	33.0%	10.7%
	\$15-25K	12.4%	29.9%	36.1%	19.6%	2.1%
	\$25-50K	20.4%	34.0%	34.6%	7.9%	3.1%
	\$50K +	34.0%	35.8%	23.3%	5.0%	1.9%
Education	Less than High School	6.8%	14.9%	29.7%	39.2%	9.5%
	High School Diploma or GED	17.8%	27.7%	34.8%	14.4%	5.3%
	Some College/Technical	22.1%	29.8%	32.6%	13.3%	2.2%
	College Degree or Higher	25.9%	40.0%	28.1%	2.2%	3.7%

Interview Year 2005

		Would you say that in general your health is:				
		Excellent	Very Good	Good	Fair	Poor
Total		15.3%	30.6%	31.4%	16.7%	6.1%
Gender	Male	15.8%	30.6%	33.2%	15.1%	5.3%
	Female	14.9%	30.7%	30.2%	17.6%	6.5%
Age	18 - 24	20.0%	35.0%	35.0%	10.0%	0.0%
	25 - 34	12.9%	50.5%	26.9%	8.6%	1.1%
	35 - 44	23.7%	35.9%	29.0%	9.9%	1.5%
	45 - 54	15.0%	30.0%	35.0%	14.2%	5.8%
	55 - 64	17.0%	25.0%	30.0%	16.0%	12.0%
	65+	9.3%	21.4%	33.0%	26.5%	9.8%
Employed	Yes	19.8%	38.1%	31.7%	9.6%	0.8%
	No	9.3%	21.5%	31.1%	25.3%	12.8%
Income	< \$15K	9.3%	14.7%	21.3%	28.0%	26.7%
	\$15-25K	7.4%	22.1%	35.2%	31.1%	4.1%
	\$25-50K	14.4%	28.7%	36.4%	17.9%	2.6%
	\$50K +	26.5%	44.4%	23.8%	4.2%	1.1%
Education	Less than High School	3.4%	15.5%	34.5%	34.5%	12.1%
	High School Diploma or GED	10.7%	25.6%	34.0%	21.4%	8.4%
	Some College/Technical	18.2%	28.9%	33.2%	15.0%	4.8%
	College Degree or Higher	21.6%	43.7%	25.1%	7.0%	2.5%

Interview Year 2007

		Would you say that in general your health is:				
		Excellent	Very Good	Good	Fair	Poor
Total		16.3%	34.1%	31.3%	13.0%	5.3%
Gender	Male	13.6%	35.6%	30.0%	13.6%	7.1%
	Female	18.7%	32.8%	32.5%	12.4%	3.6%
Age	18 - 24	31.4%	20.0%	42.9%	2.9%	2.9%
	25 - 34	18.8%	41.0%	29.9%	9.4%	0.9%
	35 - 44	17.2%	43.0%	27.3%	10.2%	2.3%
	45 - 54	13.8%	42.1%	28.3%	9.7%	6.2%
	55 - 64	18.3%	26.1%	35.2%	11.3%	9.2%
	65+	9.2%	23.1%	32.3%	27.7%	7.7%
Employed	Yes	18.7%	41.4%	30.4%	7.6%	2.0%
	No	11.7%	19.7%	33.2%	24.2%	11.2%
Income	< \$15K	6.8%	30.1%	28.8%	17.8%	16.4%
	\$15-25K	5.7%	32.9%	34.3%	24.3%	2.9%
	\$25-50K	13.7%	37.2%	32.7%	12.4%	4.0%
	\$50K +	25.1%	38.6%	27.1%	7.7%	1.4%
Education	Less than High School	9.4%	30.2%	22.6%	20.8%	17.0%
	High School Diploma or GED	14.0%	30.7%	34.8%	15.5%	4.9%
	Some College/Technical	17.4%	35.7%	32.6%	10.7%	3.6%
	College Degree or Higher	20.6%	40.0%	26.5%	9.7%	3.2%

Interview Year 2009

		Would you say that in general your health is:				
		Excellent	Very Good	Good	Fair	Poor
Total		11.0%	36.6%	31.0%	17.3%	4.0%
Gender	Male	9.9%	36.6%	30.6%	19.5%	3.3%
	Female	12.0%	36.6%	31.4%	15.3%	4.6%
Age	18 - 24	8.1%	47.7%	41.9%	2.3%	.0%
	25 - 34	9.9%	43.2%	27.9%	15.3%	3.6%
	35 - 44	9.9%	37.8%	39.6%	9.0%	3.6%
	45 - 54	10.0%	36.4%	30.0%	20.9%	2.7%
	55 - 64	14.7%	28.4%	23.5%	25.5%	7.8%
	65+	10.9%	31.0%	28.2%	24.7%	5.2%
Employed	Yes	11.5%	41.5%	34.1%	11.5%	1.4%
	No	10.4%	31.3%	27.8%	23.6%	6.9%
Income	< \$15K	13.3%	23.3%	31.7%	18.3%	13.3%
	\$15-25K	6.9%	40.3%	33.3%	15.3%	4.2%
	\$25-50K	9.3%	35.8%	33.3%	19.8%	1.9%
	\$50K +	22.1%	41.9%	23.3%	9.3%	3.5%
Education	Less than High School	12.8%	17.0%	36.2%	21.3%	12.8%
	High School Diploma or GED	6.5%	33.2%	34.5%	22.6%	3.2%
	Some College/Technical	12.0%	37.3%	31.1%	14.8%	4.8%
	College Degree or Higher	19.2%	50.8%	21.5%	6.9%	1.5%

			Would you say that in general your health is:				
			Excellent	Very Good	Good	Fair	Poor
Gender	1997	Male	23.6%	32.8%	28.6%	9.7%	5.4%
		Female	17.9%	38.7%	27.7%	11.3%	4.4%
	1999	Male	20.9%	31.2%	28.9%	12.9%	6.1%
		Female	14.9%	30.2%	37.4%	13.6%	4.0%
	2001	Male	17.6%	30.7%	34.0%	9.7%	7.9%
		Female	12.4%	35.2%	33.7%	13.3%	5.3%
	2003	Male	20.9%	29.7%	33.4%	11.3%	4.7%
		Female	17.9%	28.9%	31.3%	17.6%	4.5%
	2005	Male	15.8%	30.6%	33.2%	15.1%	5.3%
		Female	14.9%	30.7%	30.2%	17.6%	6.5%
	2007	Male	13.6%	35.6%	30.0%	13.6%	7.1%
		Female	18.7%	32.8%	32.5%	12.4%	3.6%
	2009	Male	9.9%	36.6%	30.6%	19.5%	3.3%
		Female	12.0%	36.6%	31.4%	15.3%	4.6%

			Would you say that in general your health is:				
			Excellent	Very Good	Good	Fair	Poor
Income Level	1997	< \$15K	10.0%	34.1%	27.6%	17.1%	11.2%
		\$15-25K	15.5%	38.0%	25.6%	15.5%	5.4%
		\$25-50K	24.2%	40.4%	30.3%	3.5%	1.5%
		\$50K +	32.0%	40.8%	22.3%	4.9%	.0%
	1999	< \$15K	9.1%	20.1%	40.3%	22.7%	7.8%
		\$15-25K	10.8%	23.0%	38.8%	19.4%	7.9%
		\$25-50K	25.3%	38.0%	27.1%	7.7%	1.8%
		\$50K +	24.2%	40.0%	30.0%	3.3%	2.5%
	2001	< \$15K	7.9%	18.8%	35.6%	23.8%	13.9%
		\$15-25K	16.5%	22.6%	33.8%	14.3%	12.8%
		\$25-50K	13.3%	40.5%	33.0%	10.2%	3.0%
		\$50K +	23.1%	37.8%	32.1%	5.8%	1.3%
	2003	< \$15K	7.8%	15.5%	33.0%	33.0%	10.7%
		\$15-25K	12.4%	29.9%	36.1%	19.6%	2.1%
		\$25-50K	20.4%	34.0%	34.6%	7.9%	3.1%
		\$50K +	34.0%	35.8%	23.3%	5.0%	1.9%
	2005	< \$15K	9.3%	14.7%	21.3%	28.0%	26.7%
		\$15-25K	7.4%	22.1%	35.2%	31.1%	4.1%
		\$25-50K	14.4%	28.7%	36.4%	17.9%	2.6%
		\$50K +	26.5%	44.4%	23.8%	4.2%	1.1%
2007	< \$15K	6.8%	30.1%	28.8%	17.8%	16.4%	
	\$15-25K	5.7%	32.9%	34.3%	24.3%	2.9%	
	\$25-50K	13.7%	37.2%	32.7%	12.4%	4.0%	
	\$50K +	25.1%	38.6%	27.1%	7.7%	1.4%	
2009	< \$15K	13.3%	23.3%	31.7%	18.3%	13.3%	
	\$15-25K	6.9%	40.3%	33.3%	15.3%	4.2%	
	\$25-50K	9.3%	35.8%	33.3%	19.8%	1.9%	
	\$50K +	22.1%	41.9%	23.3%	9.3%	3.5%	

Would you say that in general your health is:

			Excellent	Very Good	Good	Fair	Poor
Age	1997	18 - 24	17.0%	43.4%	32.1%	7.5%	0.0%
		25 - 34	20.2%	46.5%	24.8%	8.5%	0.0%
		35 - 44	23.5%	38.2%	31.6%	5.1%	1.5%
		45 - 54	27.3%	29.3%	32.3%	5.1%	6.1%
		55 - 64	18.3%	34.1%	22.0%	13.4%	12.2%
		65+	14.0%	29.9%	27.4%	20.1%	8.5%
	1999	18 - 24	20.9%	41.8%	29.9%	7.5%	0.0%
		25 - 34	22.9%	41.3%	31.2%	2.8%	1.8%
		35 - 44	22.0%	29.8%	33.3%	12.8%	2.1%
		45 - 54	17.5%	30.8%	32.5%	13.3%	5.8%
		55 - 64	21.2%	30.3%	33.3%	9.1%	6.1%
		65+	6.8%	20.5%	38.6%	24.4%	9.7%
	2001	18 - 24	26.3%	33.3%	36.8%	3.5%	0.0%
		25 - 34	18.1%	40.0%	32.4%	8.6%	1.0%
		35 - 44	18.6%	33.8%	35.9%	9.7%	2.1%
		45 - 54	15.3%	37.2%	28.5%	13.1%	5.8%
		55 - 64	12.4%	24.7%	40.2%	13.4%	9.3%
		65+	6.8%	30.0%	33.2%	15.8%	14.2%
	2003	18 - 24	25.0%	30.9%	38.2%	2.9%	2.9%
		25 - 34	28.8%	43.2%	22.5%	5.4%	0.0%
		35 - 44	24.6%	34.6%	28.5%	9.2%	3.1%
		45 - 54	20.2%	19.3%	38.5%	16.5%	5.5%
		55 - 64	13.1%	22.6%	34.5%	16.7%	13.1%
		65+	8.5%	24.8%	34.0%	28.1%	4.6%
	2005	18 - 24	20.0%	35.0%	35.0%	10.0%	0.0%
		25 - 34	12.9%	50.5%	26.9%	8.6%	1.1%
		35 - 44	23.7%	35.9%	29.0%	9.9%	1.5%
		45 - 54	15.0%	30.0%	35.0%	14.2%	5.8%
		55 - 64	17.0%	25.0%	30.0%	16.0%	12.0%
		65+	9.3%	21.4%	33.0%	26.5%	9.8%
2007	18 - 24	31.4%	20.0%	42.9%	2.9%	2.9%	
	25 - 34	18.8%	41.0%	29.9%	9.4%	0.9%	
	35 - 44	17.2%	43.0%	27.3%	10.2%	2.3%	
	45 - 54	13.8%	42.1%	28.3%	9.7%	6.2%	
	55 - 64	18.3%	26.1%	35.2%	11.3%	9.2%	
	65+	9.2%	23.1%	32.3%	27.7%	7.7%	
2009	18 - 24	8.1%	47.7%	41.9%	2.3%	0.0%	
	25 - 34	9.9%	43.2%	27.9%	15.3%	3.6%	
	35 - 44	9.9%	37.8%	39.6%	9.0%	3.6%	
	45 - 54	10.0%	36.4%	30.0%	20.9%	2.7%	
	55 - 64	14.7%	28.4%	23.5%	25.5%	7.8%	
	65+	10.9%	31.0%	28.2%	24.7%	5.2%	

			Would you say that in general your health is:				
			Excellent	Very Good	Good	Fair	Poor
Employment Status	1997	Employed	24.6%	41.1%	27.2%	6.5%	0.5%
		Not Employed	14.0%	30.2%	29.1%	16.1%	10.5%
	1999	Employed	24.1%	36.4%	30.4%	8.2%	1.0%
		Not Employed	7.8%	21.3%	40.1%	20.2%	10.6%
	2001	Employed	20.3%	38.3%	34.6%	6.3%	0.5%
		Not Employed	7.7%	27.1%	32.9%	18.5%	13.8%
	2003	Employed	24.8%	32.2%	32.4%	8.6%	2.0%
		Not Employed	10.6%	25.5%	32.2%	23.5%	8.2%
	2005	Employed	19.8%	38.1%	31.7%	9.6%	0.8%
		Not Employed	9.3%	21.5%	31.1%	25.3%	12.8%
	2007	Employed	18.7%	41.4%	30.4%	7.6%	2.0%
		Not Employed	11.7%	19.7%	33.2%	24.2%	11.2%
	2009	Employed	11.5%	41.5%	34.1%	11.5%	1.4%
		Not Employed	10.4%	31.3%	27.8%	23.6%	6.9%

			Would you say that in general your health is:				
			Excellent	Very Good	Good	Fair	Poor
Education Level	1997	Less than High School	12.3%	25.4%	26.3%	25.4%	10.5%
		High School Diploma or GED	16.3%	36.4%	31.0%	10.1%	6.2%
		Some College/Technical	22.2%	41.3%	28.1%	6.0%	2.4%
		College Degree or Higher	32.5%	40.5%	23.0%	4.0%	.0%
	1999	Less than High School	14.6%	20.7%	29.3%	23.2%	12.2%
		High School Diploma or GED	13.5%	27.7%	38.3%	16.0%	4.6%
		Some College/Technical	16.1%	33.5%	36.7%	10.1%	3.7%
		College Degree or Higher	30.3%	38.6%	22.0%	6.8%	2.3%
	2001	Less than High School	5.8%	17.3%	31.7%	25.0%	20.2%
		High School Diploma or GED	9.4%	33.7%	38.4%	13.0%	5.4%
		Some College/Technical	17.5%	34.9%	35.8%	8.5%	3.3%
		College Degree or Higher	27.4%	41.8%	24.0%	4.1%	2.7%
	2003	Less than High School	6.8%	14.9%	29.7%	39.2%	9.5%
		High School Diploma or GED	17.8%	27.7%	34.8%	14.4%	5.3%
		Some College/Technical	22.1%	29.8%	32.6%	13.3%	2.2%
		College Degree or Higher	25.9%	40.0%	28.1%	2.2%	3.7%
	2005	Less than High School	3.4%	15.5%	34.5%	34.5%	12.1%
		High School Diploma or GED	10.7%	25.6%	34.0%	21.4%	8.4%
		Some College/Technical	18.2%	28.9%	33.2%	15.0%	4.8%
		College Degree or Higher	21.6%	43.7%	25.1%	7.0%	2.5%
	2007	Less than High School	9.4%	30.2%	22.6%	20.8%	17.0%
		High School Diploma or GED	14.0%	30.7%	34.8%	15.5%	4.9%
		Some College/Technical	17.4%	35.7%	32.6%	10.7%	3.6%
		College Degree or Higher	20.6%	40.0%	26.5%	9.7%	3.2%
2009	Less than High School	12.8%	17.0%	36.2%	21.3%	12.8%	
	High School Diploma or GED	6.5%	33.2%	34.5%	22.6%	3.2%	
	Some College/Technical	12.0%	37.3%	31.1%	14.8%	4.8%	
	College Degree or Higher	19.2%	50.8%	21.5%	6.9%	1.5%	