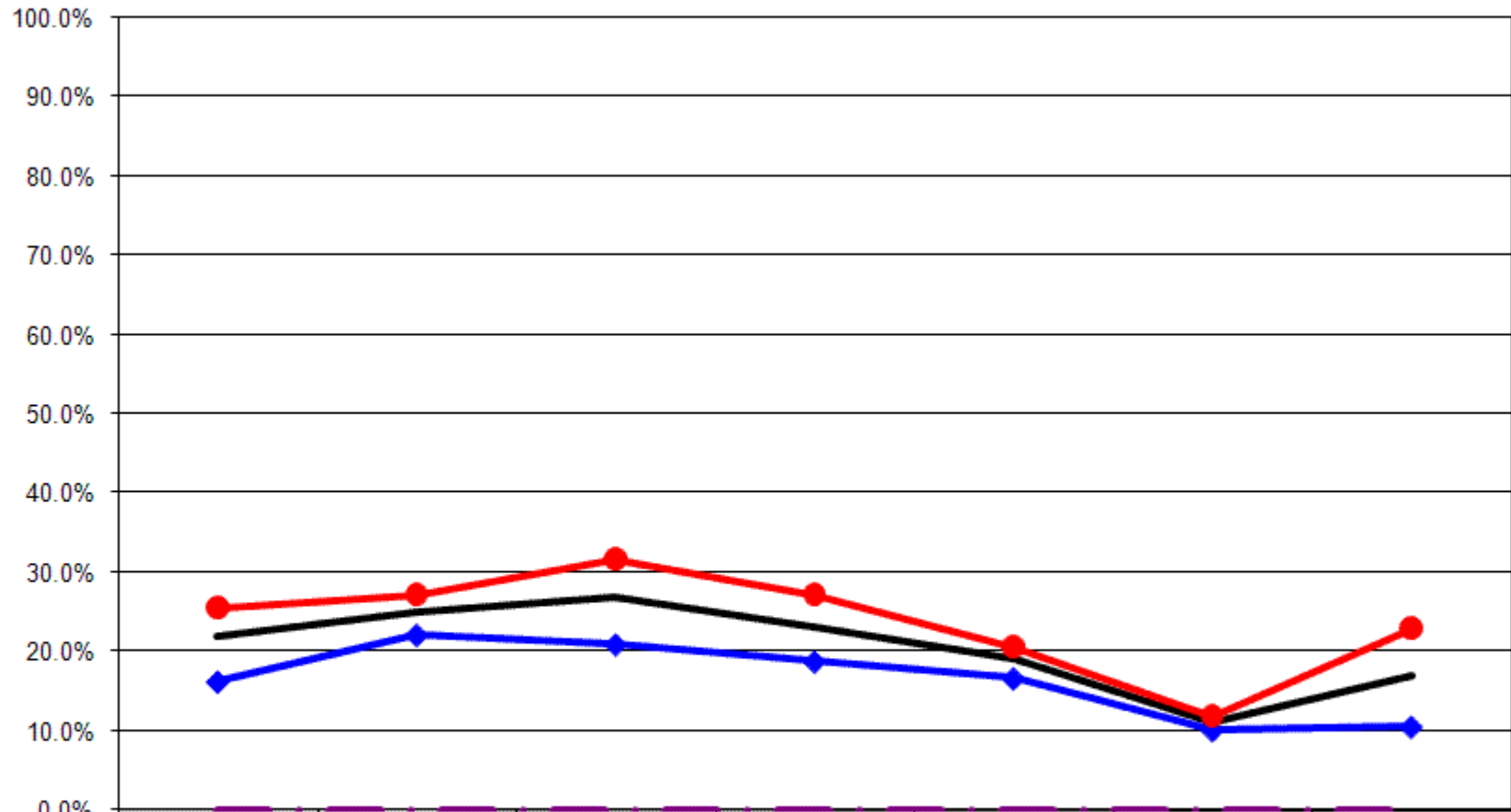


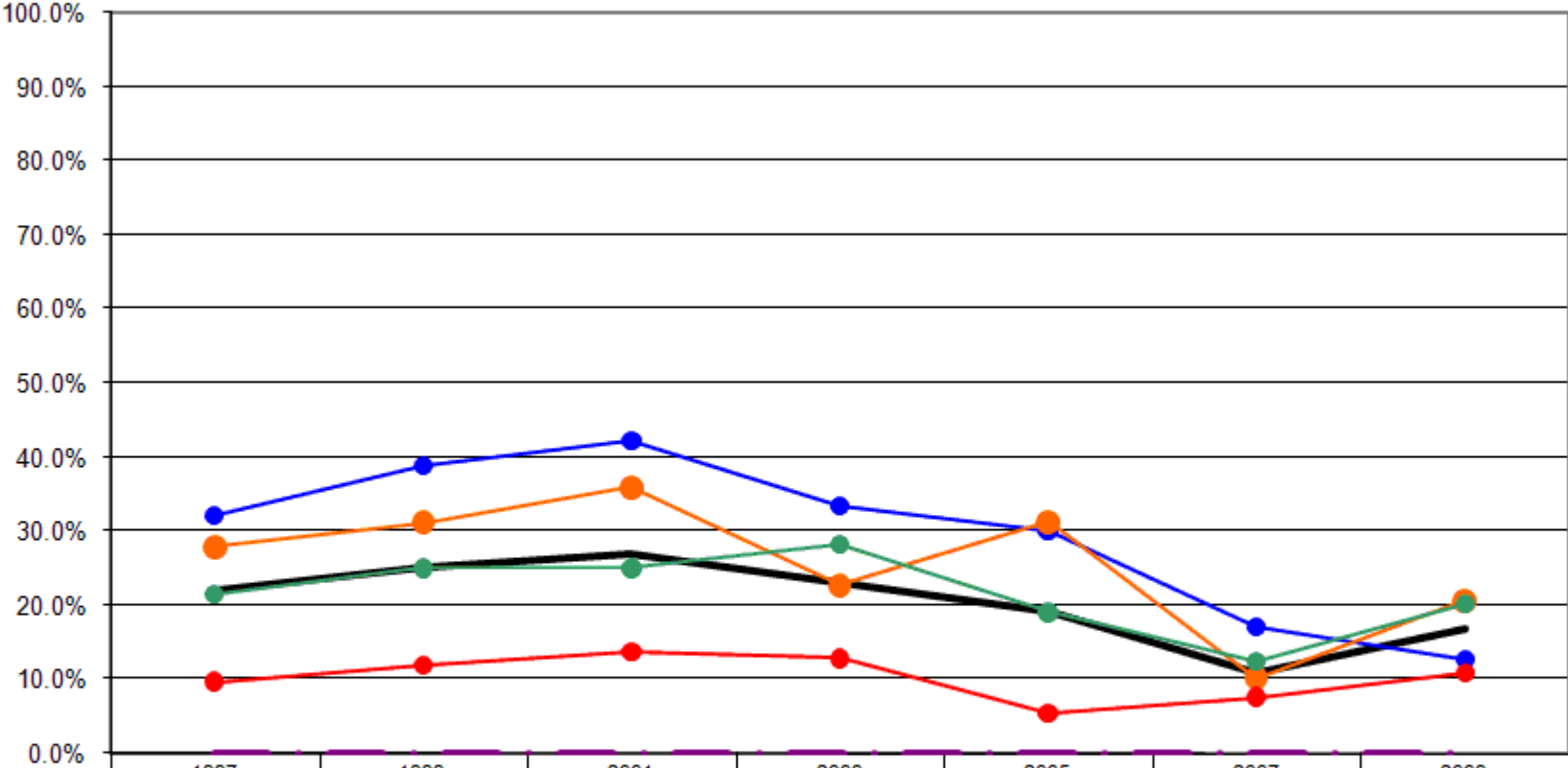
12 Year Review Mental Health

Mental Health Not Good Three or More Days By Gender



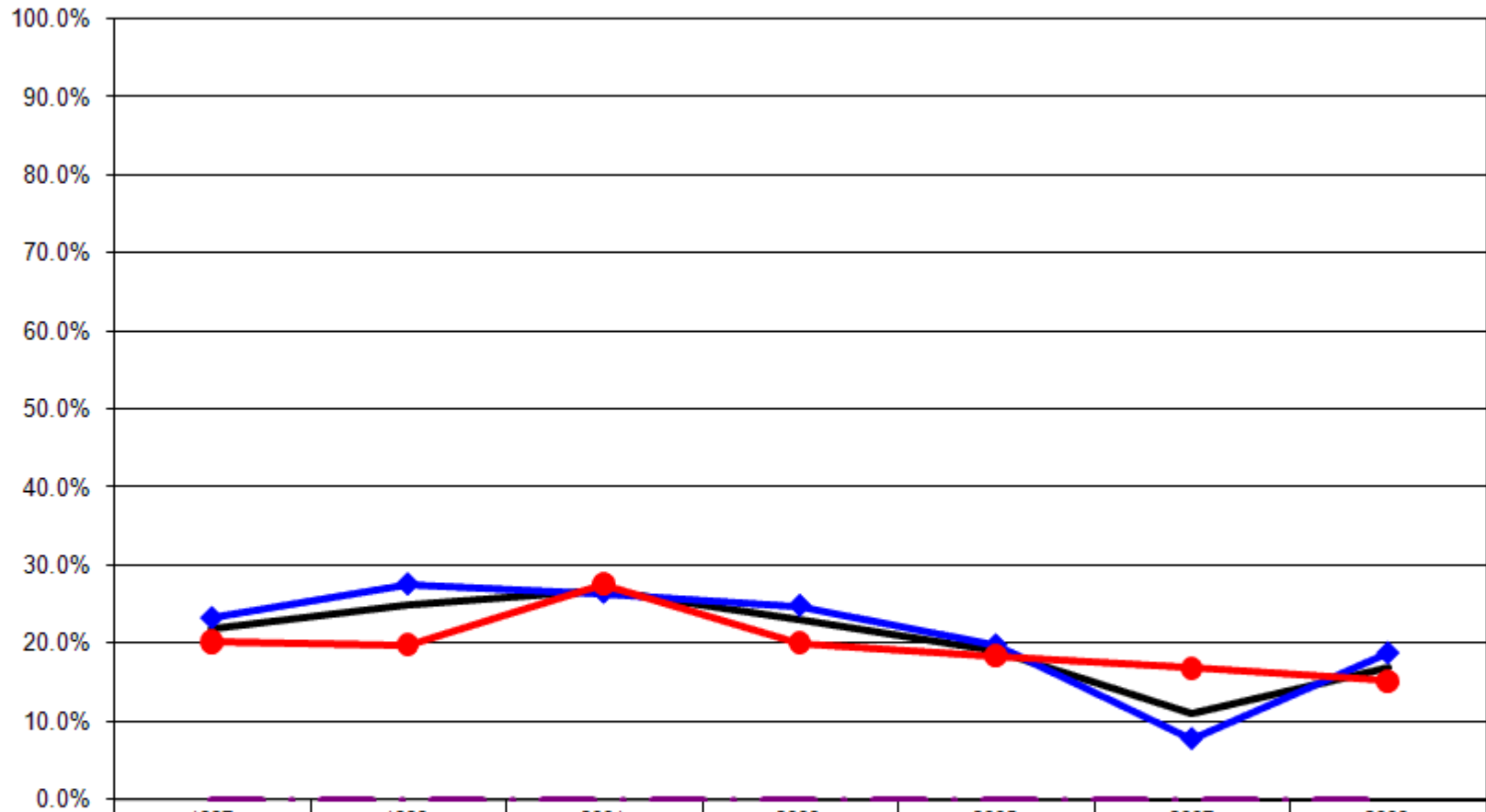
	1997	1999	2001	2003	2005	2007	2009
— Total	22.0%	25.0%	26.9%	23.1%	19.2%	11.0%	17.0%
—◆ Male	16.2%	22.1%	20.9%	18.8%	16.6%	10.1%	10.5%
—● Female	25.7%	27.2%	31.7%	27.1%	20.7%	11.8%	23.0%
- - - US Total Rate*							0.0%

Mental Health Not Good Three or More Days By Age



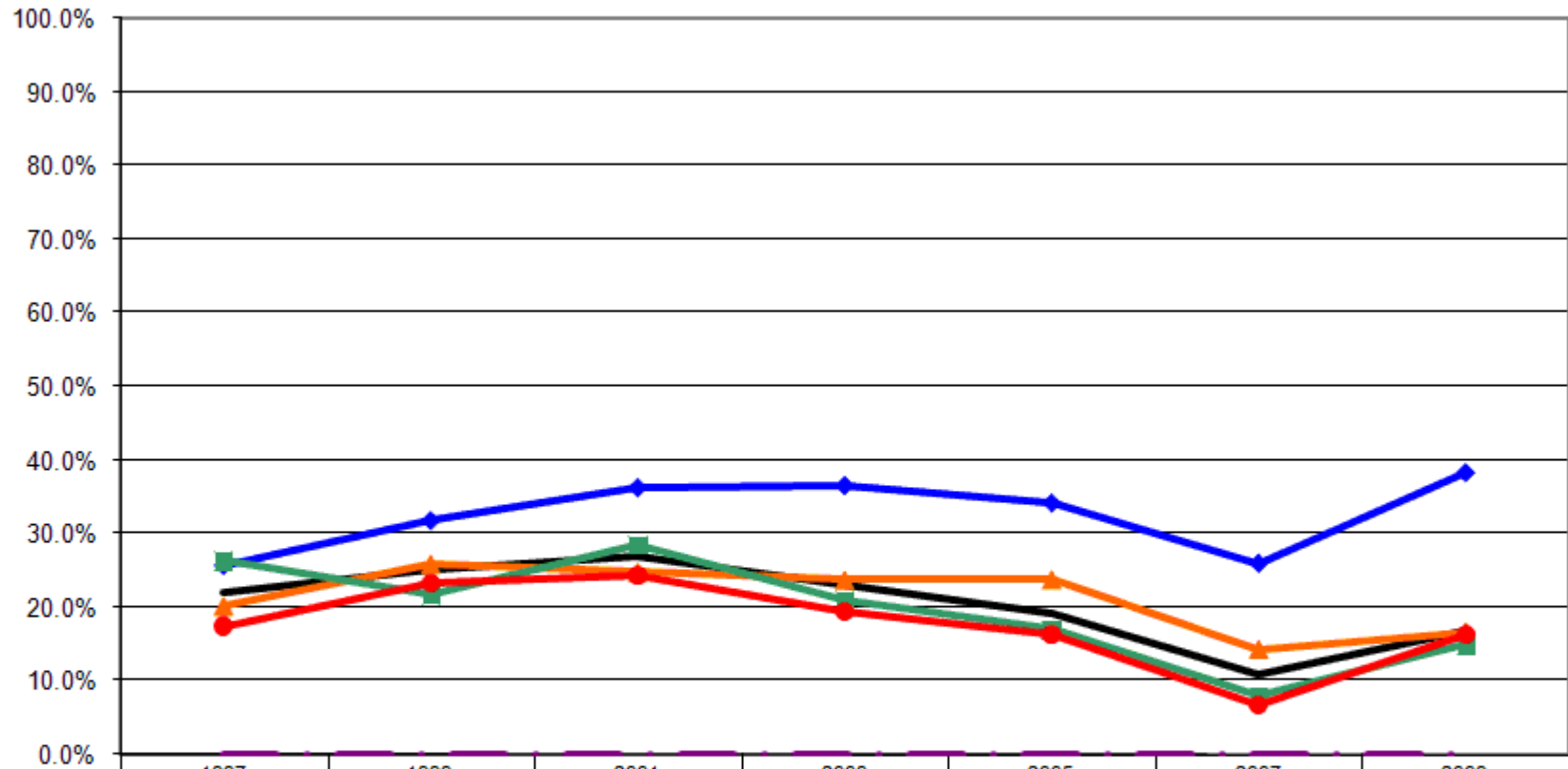
	1997	1999	2001	2003	2005	2007	2009
— Total	22.0%	25.0%	26.9%	23.1%	19.2%	11.0%	17.0%
—● 18-24	32.1%	38.8%	42.1%	33.3%	30.0%	17.1%	12.8%
—● 25-44	27.9%	31.2%	36.0%	22.7%	31.3%	10.2%	20.7%
—● 45-64	21.5%	25.0%	25.0%	28.2%	19.1%	12.5%	20.2%
—● 65+	9.7%	12.0%	13.7%	12.8%	5.5%	7.7%	10.9%
- - - US Total Rate*							0.0%

Mental Health Not Good Three or More Days By Employment Status



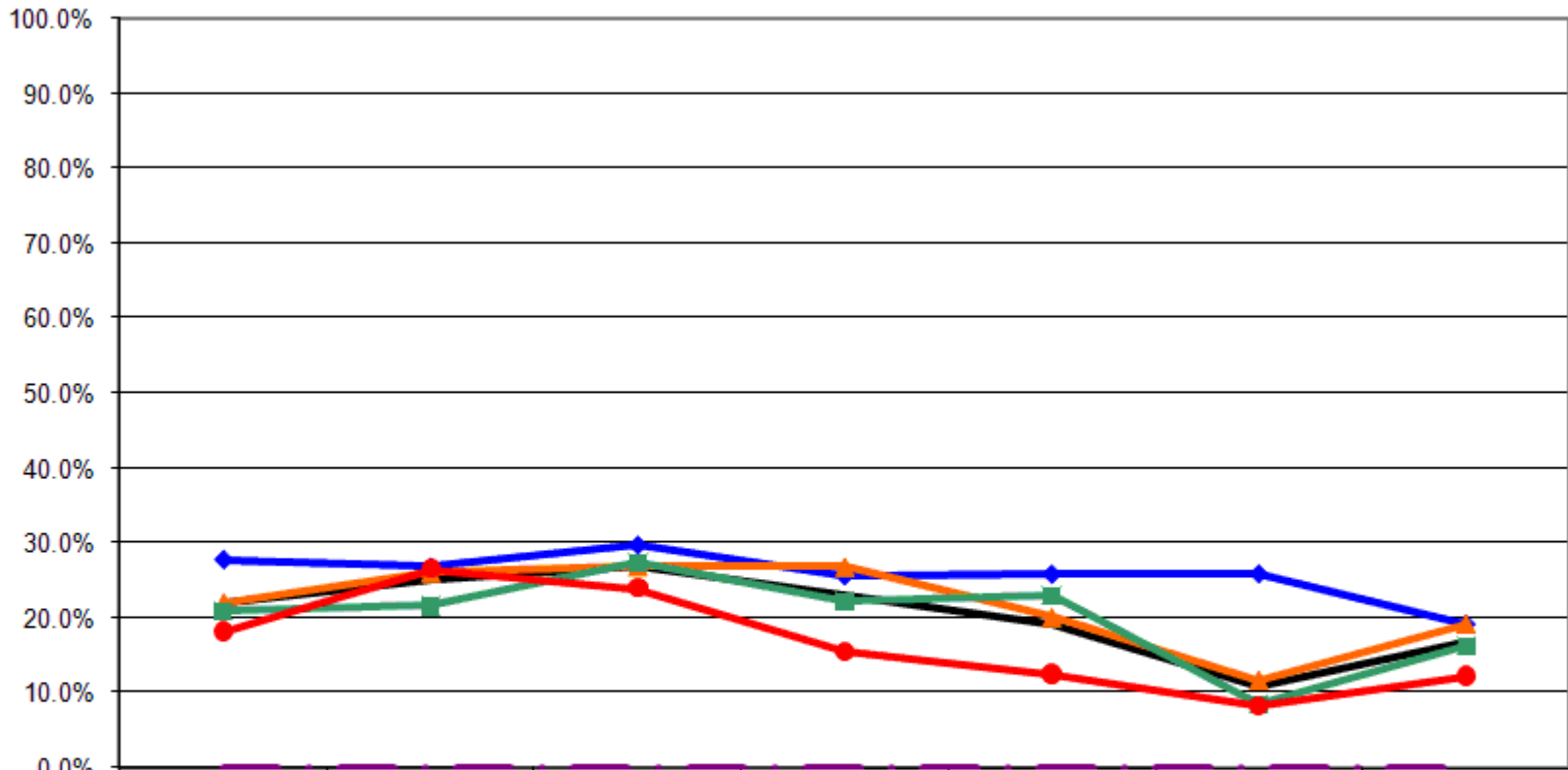
	1997	1999	2001	2003	2005	2007	2009
— Total	22.0%	25.0%	26.9%	23.1%	19.2%	11.0%	17.0%
—◆— Employed	23.3%	27.6%	26.6%	24.9%	19.8%	7.8%	18.8%
—●— Not Employed	20.3%	19.9%	27.6%	20.1%	18.5%	17.0%	15.3%
- - - - - US Total Rate*							0.0%

Mental Health Not Good Three or More Days By Income



	1997	1999	2001	2003	2005	2007	2009
— Total	22.0%	25.0%	26.9%	23.1%	19.2%	11.0%	17.0%
—◆— < \$15K	25.7%	31.8%	36.3%	36.5%	34.2%	26.0%	38.3%
—▲— \$15-25K	20.2%	25.9%	24.8%	23.7%	23.8%	14.3%	16.7%
—■— \$25-50K	26.3%	21.6%	28.4%	20.8%	16.9%	7.9%	14.8%
—●— \$50K+	17.5%	23.3%	24.4%	19.5%	16.4%	6.8%	16.3%
- - - US Total Rate*							0.0%

Mental Health Not Good Three or More Days By Education



	1997	1999	2001	2003	2005	2007	2009
— Total	22.0%	25.0%	26.9%	23.1%	19.2%	11.0%	17.0%
—◆— < HS	27.8%	26.8%	29.8%	25.7%	25.9%	25.9%	19.1%
—▲— HS or GED	22.1%	26.1%	27.0%	26.9%	20.2%	11.7%	19.3%
—■— Some College	21.0%	21.6%	27.4%	22.3%	23.0%	8.5%	16.3%
—●— College Degree +	18.3%	26.5%	24.0%	15.6%	12.6%	8.4%	12.3%
- - - US Total Rate*							0.0%

Interview Year 1997

For how many days during the past 30 days was your mental health not good?

		None	1-2 Days	3-7 Days	8-29 Days	30 Days
Total		69.1%	8.5%	11.4%	6.1%	4.9%
Gender	Male	76.4%	7.1%	9.1%	4.7%	2.8%
	Female	64.5%	9.4%	12.9%	6.9%	6.2%
Age	18 - 24	47.2%	20.8%	18.9%	7.5%	5.7%
	25 - 34	59.4%	12.5%	14.1%	9.4%	4.7%
	35 - 44	57.8%	14.1%	14.8%	8.1%	5.2%
	45 - 54	70.1%	6.2%	13.4%	5.2%	5.2%
	55 - 64	77.5%	2.5%	7.5%	3.8%	8.8%
	65+	88.8%	1.3%	5.0%	2.5%	2.5%
Employed	Yes	65.9%	10.6%	13.2%	6.3%	4.0%
	No	73.5%	5.7%	9.0%	5.7%	6.1%
Income	< \$15K	67.1%	6.6%	10.2%	7.8%	8.4%
	\$15-25K	72.4%	7.1%	9.4%	6.3%	4.7%
	\$25-50K	62.4%	11.2%	13.7%	7.6%	5.1%
	\$50K +	75.5%	6.9%	12.7%	3.9%	1.0%
Education	Less than High School	67.3%	3.6%	14.5%	8.2%	6.4%
	High School Diploma or GED	70.7%	7.0%	9.4%	7.0%	5.9%
	Some College/Technical	68.3%	10.4%	10.4%	6.1%	4.9%
	College Degree or Higher	68.0%	13.6%	14.4%	2.4%	1.6%

Interview Year 1999

For how many days during the past 30 days was your mental health not good?

		None	1-2 Days	3-7 Days	8-29 Days	30 Days
Total		64.2%	10.6%	11.3%	8.2%	5.8%
Gender	Male	69.0%	8.7%	7.7%	5.8%	8.7%
	Female	60.4%	12.0%	14.0%	10.0%	3.5%
Age	18 - 24	46.3%	14.9%	25.4%	7.5%	6.0%
	25 - 34	59.6%	9.2%	16.5%	11.0%	3.7%
	35 - 44	52.5%	15.8%	12.9%	11.5%	7.2%
	45 - 54	52.5%	13.3%	15.8%	10.0%	8.3%
	55 - 64	81.6%	7.1%	3.1%	5.1%	3.1%
	65+	81.5%	5.8%	2.9%	4.0%	5.8%
Employed	Yes	58.5%	13.8%	13.8%	8.2%	5.8%
	No	73.3%	6.5%	7.2%	6.9%	6.1%
Income	< \$15K	60.7%	6.7%	10.0%	16.7%	6.0%
	\$15-25K	61.6%	12.3%	14.5%	5.1%	6.5%
	\$25-50K	63.8%	14.5%	12.7%	5.4%	3.6%
	\$50K +	65.8%	10.8%	10.0%	5.8%	7.5%
Education	Less than High School	65.9%	7.3%	8.5%	11.0%	7.3%
	High School Diploma or GED	64.4%	9.3%	11.0%	8.2%	7.1%
	Some College/Technical	64.8%	13.1%	11.3%	7.0%	3.8%
	College Degree or Higher	62.1%	11.4%	13.6%	8.3%	4.5%

Interview Year 2001

		For how many days during the past 30 days was your mental health not good?				
		None	1-2 Days	3-7 Days	8-29 Days	30 Days
Total		63.0%	9.7%	11.3%	10.5%	5.5%
Gender	Male	71.4%	7.4%	8.3%	8.6%	4.3%
	Female	56.4%	11.5%	13.7%	12.0%	6.4%
Age	18 - 24	37.5%	19.6%	17.9%	17.9%	7.1%
	25 - 34	56.3%	9.7%	16.5%	15.5%	1.9%
	35 - 44	49.7%	11.9%	16.8%	15.4%	6.3%
	45 - 54	58.4%	10.9%	13.1%	8.8%	8.8%
	55 - 64	74.0%	8.3%	6.3%	6.3%	5.2%
	65+	81.4%	4.8%	3.7%	5.9%	4.3%
Employed	Yes	60.2%	12.9%	13.7%	10.0%	3.2%
	No	66.3%	5.6%	8.4%	11.3%	8.4%
Income	< \$15K	55.6%	7.1%	14.1%	15.2%	8.1%
	\$15-25K	63.4%	11.5%	6.1%	10.7%	8.4%
	\$25-50K	61.5%	9.9%	13.4%	11.1%	4.2%
	\$50K +	65.2%	10.3%	11.6%	8.4%	4.5%
Education	Less than High School	63.6%	5.1%	8.1%	13.1%	10.1%
	High School Diploma or GED	63.2%	9.7%	11.6%	9.7%	5.8%
	Some College/Technical	63.0%	9.1%	13.0%	11.1%	3.8%
	College Degree or Higher	62.3%	13.7%	11.0%	9.6%	3.4%

Interview Year 2003

		For how many days during the past 30 days was your mental health not good?				
		None	1-2 Days	3-7 Days	8-29 Days	30 Days
Total		69.3%	7.1%	9.1%	7.9%	6.6%
Gender	Male	76.1%	4.8%	6.1%	7.6%	5.4%
	Female	63.0%	9.3%	11.9%	8.1%	7.8%
Age	18 - 24	55.9%	10.3%	10.3%	14.7%	8.8%
	25 - 34	66.7%	9.0%	12.6%	5.4%	6.3%
	35 - 44	70.5%	7.8%	10.1%	6.2%	5.4%
	45 - 54	60.2%	8.3%	9.3%	13.0%	9.3%
	55 - 64	71.1%	3.6%	12.0%	9.6%	3.6%
	65+	81.9%	4.7%	3.4%	3.4%	6.7%
Employed	Yes	67.4%	7.4%	11.5%	8.1%	5.6%
	No	73.2%	6.0%	5.2%	7.2%	8.4%
Income	< \$15K	56.9%	5.9%	10.8%	13.7%	12.7%
	\$15-25K	70.2%	5.3%	5.3%	8.5%	10.6%
	\$25-50K	70.7%	8.0%	10.1%	6.9%	4.3%
	\$50K +	74.1%	6.3%	10.1%	7.0%	2.5%
Education	Less than High School	64.8%	8.5%	5.6%	8.5%	12.7%
	High School Diploma or GED	67.4%	5.3%	11.7%	8.7%	6.8%
	Some College/Technical	71.7%	5.6%	7.8%	7.8%	7.2%
	College Degree or Higher	72.7%	11.4%	7.6%	6.1%	2.3%

Interview Year 2005

		For how many days during the past 30 days was your mental health not good?				
		None	1-2 Days	3-7 Days	8-29 Days	30 Days
Total		74.1%	6.1%	7.4%	7.1%	5.2%
Gender	Male	77.3%	5.5%	6.7%	5.5%	5.1%
	Female	72.3%	6.5%	7.9%	8.1%	5.3%
Age	18 - 24	66.7%	2.6%	7.7%	15.4%	7.7%
	25 - 34	56.0%	12.1%	15.4%	9.9%	6.6%
	35 - 44	62.0%	6.2%	13.2%	10.9%	7.8%
	45 - 54	66.1%	10.2%	7.6%	8.5%	7.6%
	55 - 64	79.8%	5.3%	6.4%	4.3%	4.3%
	65+	91.9%	2.4%	1.0%	2.9%	1.9%
Employed	Yes	72.2%	7.7%	8.7%	7.2%	4.1%
	No	76.4%	4.0%	5.7%	7.1%	6.7%
Income	< \$15K	57.5%	6.8%	8.2%	13.7%	13.7%
	\$15-25K	70.1%	5.1%	6.8%	9.4%	8.5%
	\$25-50K	74.5%	8.0%	5.3%	7.4%	4.8%
	\$50K +	75.8%	7.5%	10.2%	5.4%	1.1%
Education	Less than High School	70.2%	3.5%	1.8%	14.0%	10.5%
	High School Diploma or GED	74.3%	5.1%	8.6%	5.4%	6.6%
	Some College/Technical	66.7%	9.0%	8.5%	9.6%	6.2%
	College Degree or Higher	81.5%	5.6%	6.7%	5.1%	1.0%

Interview Year 2007

		For how many days during the past 30 days was your mental health not good?				
		None	1-2 Days	3-7 Days	8-29 Days	30 Days
Total		81.7%	7.2%	4.0%	5.0%	2.0%
Gender	Male	83.2%	6.6%	3.9%	4.5%	1.8%
	Female	80.4%	7.7%	4.1%	5.5%	2.2%
Age	18 - 24	74.3%	8.6%	0.0%	14.3%	2.9%
	25 - 34	80.2%	10.3%	1.7%	4.3%	3.4%
	35 - 44	80.6%	8.5%	3.1%	7.0%	0.8%
	45 - 54	78.6%	6.9%	5.5%	6.2%	2.8%
	55 - 64	84.4%	5.0%	5.0%	2.8%	2.8%
	65+	86.6%	5.5%	5.5%	2.4%	0.0%
Employed	Yes	83.7%	8.5%	3.3%	3.5%	1.1%
	No	78.7%	4.1%	5.4%	7.7%	4.1%
Income	< \$15K	65.8%	8.2%	5.5%	12.3%	8.2%
	\$15-25K	80.9%	4.4%	2.9%	10.3%	1.5%
	\$25-50K	84.1%	8.0%	4.0%	3.1%	0.9%
	\$50K +	86.4%	6.8%	2.9%	2.9%	1.0%
Education	Less than High School	70.4%	3.7%	11.1%	9.3%	5.6%
	High School Diploma or GED	81.5%	6.5%	3.8%	6.2%	1.9%
	Some College/Technical	84.4%	7.1%	2.7%	3.6%	2.2%
	College Degree or Higher	81.8%	9.7%	3.9%	3.9%	0.6%

Interview Year 2009

		For how many days during the past 30 days was your mental health not good?				
		None	1-2 Days	3-7 Days	8-29 Days	30 Days
Total		74.1%	8.3%	9.2%	4.9%	3.6%
Gender	Male	80.6%	8.5%	5.6%	2.5%	2.8%
	Female	68.3%	8.1%	12.3%	7.0%	4.2%
Age	18 - 24	75.0%	11.3%	6.3%	6.3%	1.3%
	25 - 34	69.8%	5.7%	14.2%	9.4%	0.9%
	35 - 44	70.5%	10.5%	10.5%	2.9%	5.7%
	45 - 54	64.8%	14.8%	13.0%	3.7%	3.7%
	55 - 64	71.6%	7.8%	9.8%	4.9%	5.9%
	65+	85.9%	2.9%	4.1%	3.5%	3.5%
Employed	Yes	72.7%	11.4%	10.8%	3.1%	2.0%
	No	75.6%	4.9%	7.4%	6.8%	5.2%
Income	< \$15K	54.4%	5.3%	12.3%	15.8%	12.3%
	\$15-25K	76.1%	6.0%	6.0%	9.0%	3.0%
	\$25-50K	74.2%	10.7%	8.2%	3.8%	3.1%
	\$50K +	76.8%	6.1%	11.0%	1.2%	4.9%
Education	Less than High School	80.0%	0.0%	4.4%	11.1%	4.4%
	High School Diploma or GED	71.0%	8.8%	10.8%	5.7%	3.7%
	Some College/Technical	71.4%	11.8%	8.9%	4.9%	3.0%
	College Degree or Higher	82.8%	4.7%	7.8%	0.8%	3.9%

			Now thinking about your mental health, for how many days during the past 30 days was your mental health not good?				
			None	1-2 Days	3-7 Days	8-29 Days	30 Days
Gender	1997	Male	76.4%	7.1%	9.1%	4.7%	2.8%
		Female	64.5%	9.4%	12.9%	6.9%	6.2%
	1999	Male	69.0%	8.7%	7.7%	5.8%	8.7%
		Female	60.4%	12.0%	14.0%	10.0%	3.5%
	2001	Male	71.4%	7.4%	8.3%	8.6%	4.3%
		Female	56.4%	11.5%	13.7%	12.0%	6.4%
	2003	Male	76.1%	4.8%	6.1%	7.6%	5.4%
		Female	63.0%	9.3%	11.9%	8.1%	7.8%
	2005	Male	77.3%	5.5%	6.7%	5.5%	5.1%
		Female	72.3%	6.5%	7.9%	8.1%	5.3%
	2007	Male	83.2%	6.6%	3.9%	4.5%	1.8%
		Female	80.4%	7.7%	4.1%	5.5%	2.2%
	2009	Male	80.6%	8.5%	5.6%	2.5%	2.8%
		Female	68.3%	8.1%	12.3%	7.0%	4.2%

Now thinking about your mental health, for how many days during the past 30 days was your mental health not good?

			None	1-2 Days	3-7 Days	8-29 Days	30 Days
Income	1997	< \$15K	67.1%	6.6%	10.2%	7.8%	8.4%
		\$15-25K	72.4%	7.1%	9.4%	6.3%	4.7%
		\$25-50K	62.4%	11.2%	13.7%	7.6%	5.1%
		\$50K +	75.5%	6.9%	12.7%	3.9%	1.0%
	1999	< \$15K	60.7%	6.7%	10.0%	16.7%	6.0%
		\$15-25K	61.6%	12.3%	14.5%	5.1%	6.5%
		\$25-50K	63.8%	14.5%	12.7%	5.4%	3.6%
		\$50K +	65.8%	10.8%	10.0%	5.8%	7.5%
	2001	< \$15K	55.6%	7.1%	14.1%	15.2%	8.1%
		\$15-25K	63.4%	11.5%	6.1%	10.7%	8.4%
		\$25-50K	61.5%	9.9%	13.4%	11.1%	4.2%
		\$50K +	65.2%	10.3%	11.6%	8.4%	4.5%
	2003	< \$15K	56.9%	5.9%	10.8%	13.7%	12.7%
		\$15-25K	70.2%	5.3%	5.3%	8.5%	10.6%
		\$25-50K	70.7%	8.0%	10.1%	6.9%	4.3%
		\$50K +	74.1%	6.3%	10.1%	7.0%	2.5%
	2005	< \$15K	57.5%	6.8%	8.2%	13.7%	13.7%
		\$15-25K	70.1%	5.1%	6.8%	9.4%	8.5%
		\$25-50K	74.5%	8.0%	5.3%	7.4%	4.8%
		\$50K +	75.8%	7.5%	10.2%	5.4%	1.1%
2007	< \$15K	65.8%	8.2%	5.5%	12.3%	8.2%	
	\$15-25K	80.9%	4.4%	2.9%	10.3%	1.5%	
	\$25-50K	84.1%	8.0%	4.0%	3.1%	0.9%	
	\$50K +	86.4%	6.8%	2.9%	2.9%	1.0%	
2009	< \$15K	54.4%	5.3%	12.3%	15.8%	12.3%	
	\$15-25K	76.1%	6.0%	6.0%	9.0%	3.0%	
	\$25-50K	74.2%	10.7%	8.2%	3.8%	3.1%	
	\$50K +	76.8%	6.1%	11.0%	1.2%	4.9%	

Now thinking about your mental health, for how many days during the past 30 days was your mental health not good?

			None	1-2 Days	3-7 Days	8-29 Days	30 Days
Age	1997	18 - 24	47.2%	20.8%	18.9%	7.5%	5.7%
		25 - 34	59.4%	12.5%	14.1%	9.4%	4.7%
		35 - 44	57.8%	14.1%	14.8%	8.1%	5.2%
		45 - 54	70.1%	6.2%	13.4%	5.2%	5.2%
		55 - 64	77.5%	2.5%	7.5%	3.8%	8.8%
		65+	88.8%	1.3%	5.0%	2.5%	2.5%
	1999	18 - 24	46.3%	14.9%	25.4%	7.5%	6.0%
		25 - 34	59.6%	9.2%	16.5%	11.0%	3.7%
		35 - 44	52.5%	15.8%	12.9%	11.5%	7.2%
		45 - 54	52.5%	13.3%	15.8%	10.0%	8.3%
		55 - 64	81.6%	7.1%	3.1%	5.1%	3.1%
		65+	81.5%	5.8%	2.9%	4.0%	5.8%
	2001	18 - 24	37.5%	19.6%	17.9%	17.9%	7.1%
		25 - 34	56.3%	9.7%	16.5%	15.5%	1.9%
		35 - 44	49.7%	11.9%	16.8%	15.4%	6.3%
		45 - 54	58.4%	10.9%	13.1%	8.8%	8.8%
		55 - 64	74.0%	8.3%	6.3%	6.3%	5.2%
		65+	81.4%	4.8%	3.7%	5.9%	4.3%
	2003	18 - 24	55.9%	10.3%	10.3%	14.7%	8.8%
		25 - 34	66.7%	9.0%	12.6%	5.4%	6.3%
		35 - 44	70.5%	7.8%	10.1%	6.2%	5.4%
		45 - 54	60.2%	8.3%	9.3%	13.0%	9.3%
		55 - 64	71.1%	3.6%	12.0%	9.6%	3.6%
		65+	81.9%	4.7%	3.4%	3.4%	6.7%
	2005	18 - 24	66.7%	2.6%	7.7%	15.4%	7.7%
		25 - 34	56.0%	12.1%	15.4%	9.9%	6.6%
		35 - 44	62.0%	6.2%	13.2%	10.9%	7.8%
		45 - 54	66.1%	10.2%	7.6%	8.5%	7.6%
		55 - 64	79.8%	5.3%	6.4%	4.3%	4.3%
		65+	91.9%	2.4%	1.0%	2.9%	1.9%
2007	18 - 24	74.3%	8.6%	.0%	14.3%	2.9%	
	25 - 34	80.2%	10.3%	1.7%	4.3%	3.4%	
	35 - 44	80.6%	8.5%	3.1%	7.0%	.8%	
	45 - 54	78.6%	6.9%	5.5%	6.2%	2.8%	
	55 - 64	84.4%	5.0%	5.0%	2.8%	2.8%	
	65+	86.6%	5.5%	5.5%	2.4%	0.0%	
2009	18 - 24	75.0%	11.3%	6.3%	6.3%	1.3%	
	25 - 34	69.8%	5.7%	14.2%	9.4%	0.9%	
	35 - 44	70.5%	10.5%	10.5%	2.9%	5.7%	
	45 - 54	64.8%	14.8%	13.0%	3.7%	3.7%	
	55 - 64	71.6%	7.8%	9.8%	4.9%	5.9%	
	65+	85.9%	2.9%	4.1%	3.5%	3.5%	

Now thinking about your mental health, for how many days
during the past 30 days was your mental health not good?

			None	1-2 Days	3-7 Days	8-29 Days	30 Days
Employment Status	1997	Employed	65.9%	10.6%	13.2%	6.3%	4.0%
		Not Employed	73.5%	5.7%	9.0%	5.7%	6.1%
	1999	Employed	58.5%	13.8%	13.8%	8.2%	5.8%
		Not Employed	73.3%	6.5%	7.2%	6.9%	6.1%
	2001	Employed	60.2%	12.9%	13.7%	10.0%	3.2%
		Not Employed	66.3%	5.6%	8.4%	11.3%	8.4%
	2003	Employed	67.4%	7.4%	11.5%	8.1%	5.6%
		Not Employed	73.2%	6.0%	5.2%	7.2%	8.4%
	2005	Employed	72.2%	7.7%	8.7%	7.2%	4.1%
		Not Employed	76.4%	4.0%	5.7%	7.1%	6.7%
	2007	Employed	83.7%	8.5%	3.3%	3.5%	1.1%
		Not Employed	78.7%	4.1%	5.4%	7.7%	4.1%
	2009	Employed	72.7%	11.4%	10.8%	3.1%	2.0%
		Not Employed	75.6%	4.9%	7.4%	6.8%	5.2%

Now thinking about your mental health, for how many days during the past 30 days was your mental health not good?

			None	1-2 Days	3-7 Days	8-29 Days	30 Days
Education Level	1997	Less than High School	67.3%	3.6%	14.5%	8.2%	6.4%
		High School Diploma or GED	70.7%	7.0%	9.4%	7.0%	5.9%
		Some College/Technical	68.3%	10.4%	10.4%	6.1%	4.9%
		College Degree or Higher	68.0%	13.6%	14.4%	2.4%	1.6%
	1999	Less than High School	65.9%	7.3%	8.5%	11.0%	7.3%
		High School Diploma or GED	64.4%	9.3%	11.0%	8.2%	7.1%
		Some College/Technical	64.8%	13.1%	11.3%	7.0%	3.8%
		College Degree or Higher	62.1%	11.4%	13.6%	8.3%	4.5%
	2001	Less than High School	63.6%	5.1%	8.1%	13.1%	10.1%
		High School Diploma or GED	63.2%	9.7%	11.6%	9.7%	5.8%
		Some College/Technical	63.0%	9.1%	13.0%	11.1%	3.8%
		College Degree or Higher	62.3%	13.7%	11.0%	9.6%	3.4%
	2003	Less than High School	64.8%	8.5%	5.6%	8.5%	12.7%
		High School Diploma or GED	67.4%	5.3%	11.7%	8.7%	6.8%
		Some College/Technical	71.7%	5.6%	7.8%	7.8%	7.2%
		College Degree or Higher	72.7%	11.4%	7.6%	6.1%	2.3%
	2005	Less than High School	70.2%	3.5%	1.8%	14.0%	10.5%
		High School Diploma or GED	74.3%	5.1%	8.6%	5.4%	6.6%
		Some College/Technical	66.7%	9.0%	8.5%	9.6%	6.2%
		College Degree or Higher	81.5%	5.6%	6.7%	5.1%	1.0%
2007	Less than High School	70.4%	3.7%	11.1%	9.3%	5.6%	
	High School Diploma or GED	81.5%	6.5%	3.8%	6.2%	1.9%	
	Some College/Technical	84.4%	7.1%	2.7%	3.6%	2.2%	
	College Degree or Higher	81.8%	9.7%	3.9%	3.9%	0.6%	
2009	Less than High School	80.0%	0.0%	4.4%	11.1%	4.4%	
	High School Diploma or GED	71.0%	8.8%	10.8%	5.7%	3.7%	
	Some College/Technical	71.4%	11.8%	8.9%	4.9%	3.0%	
	College Degree or Higher	82.8%	4.7%	7.8%	0.8%	3.9%	