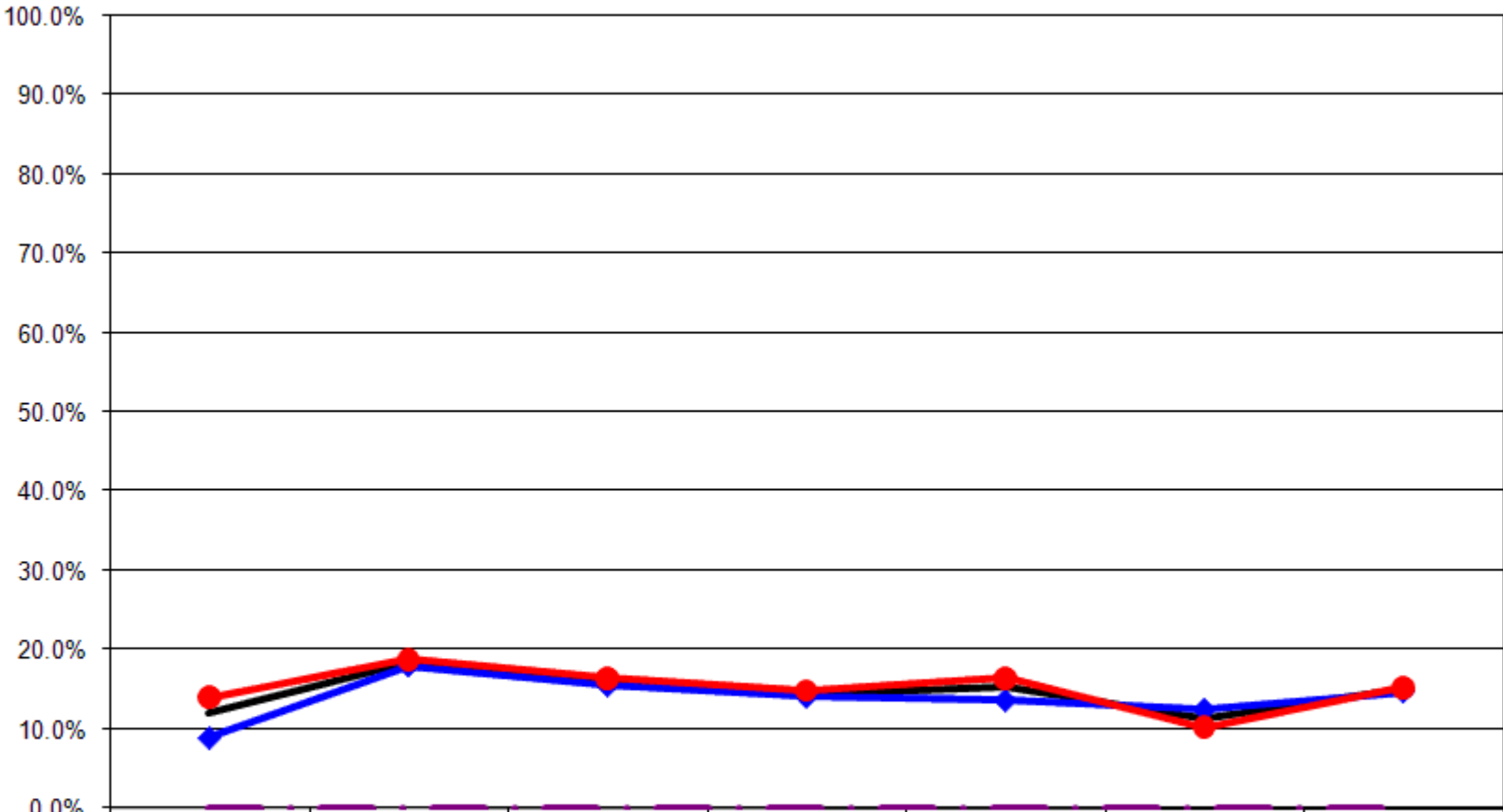


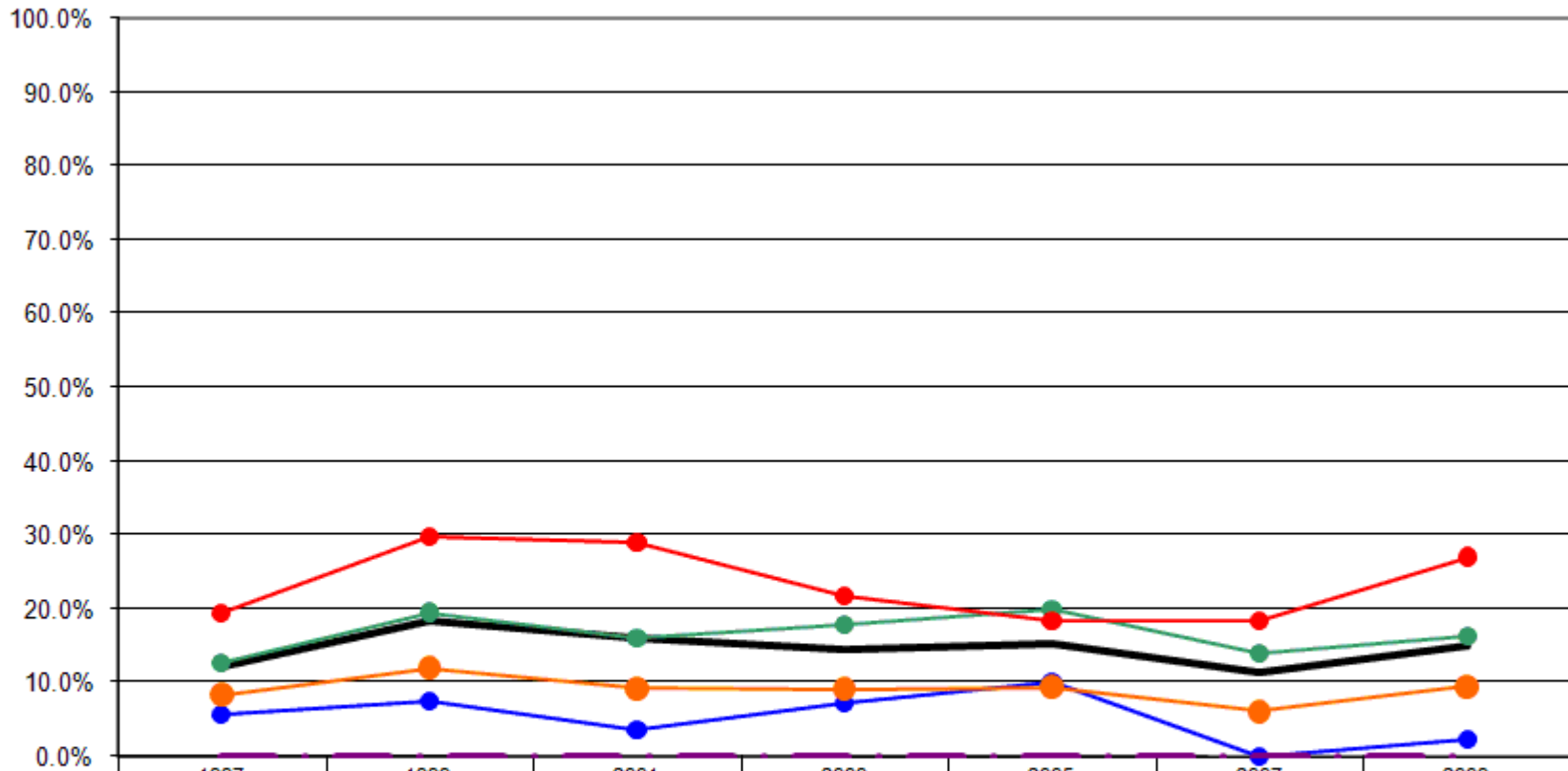
# 12 Year Review Physical Health

## Physical Health Not Good Eight or More Days By Gender



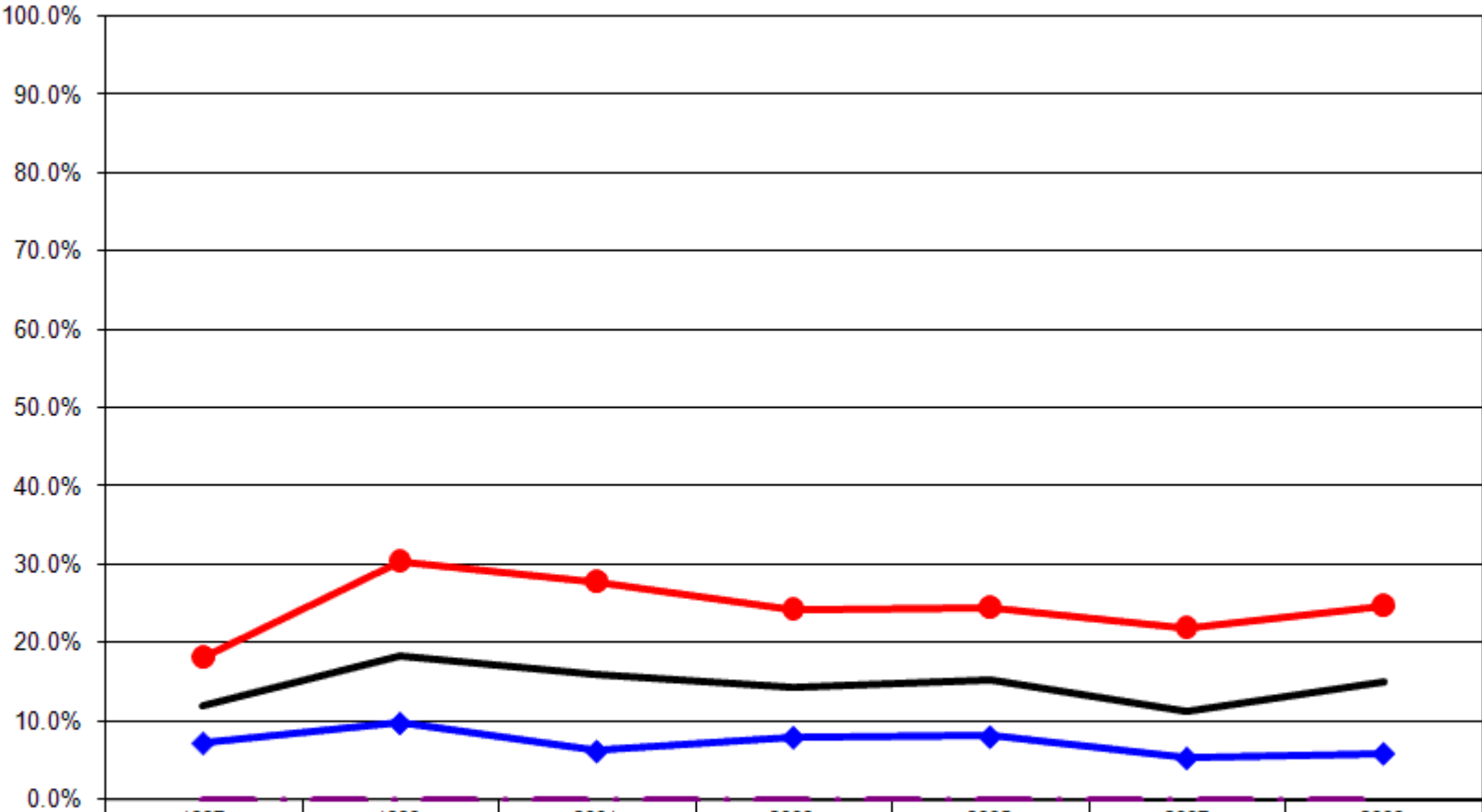
	1997	1999	2001	2003	2005	2007	2009
— Total	12.0%	18.4%	16.0%	14.5%	15.4%	11.3%	15.0%
—◆ Male	8.9%	17.9%	15.5%	14.1%	13.6%	12.4%	14.7%
—● Female	13.9%	18.8%	16.5%	14.9%	16.4%	10.2%	15.3%
- - - US Total Rate*	0.0%	0.0%	0.0%	0.0%	0.0%	0.0%	0.0%

### Physical Health Not Good Eight or More Days By Age



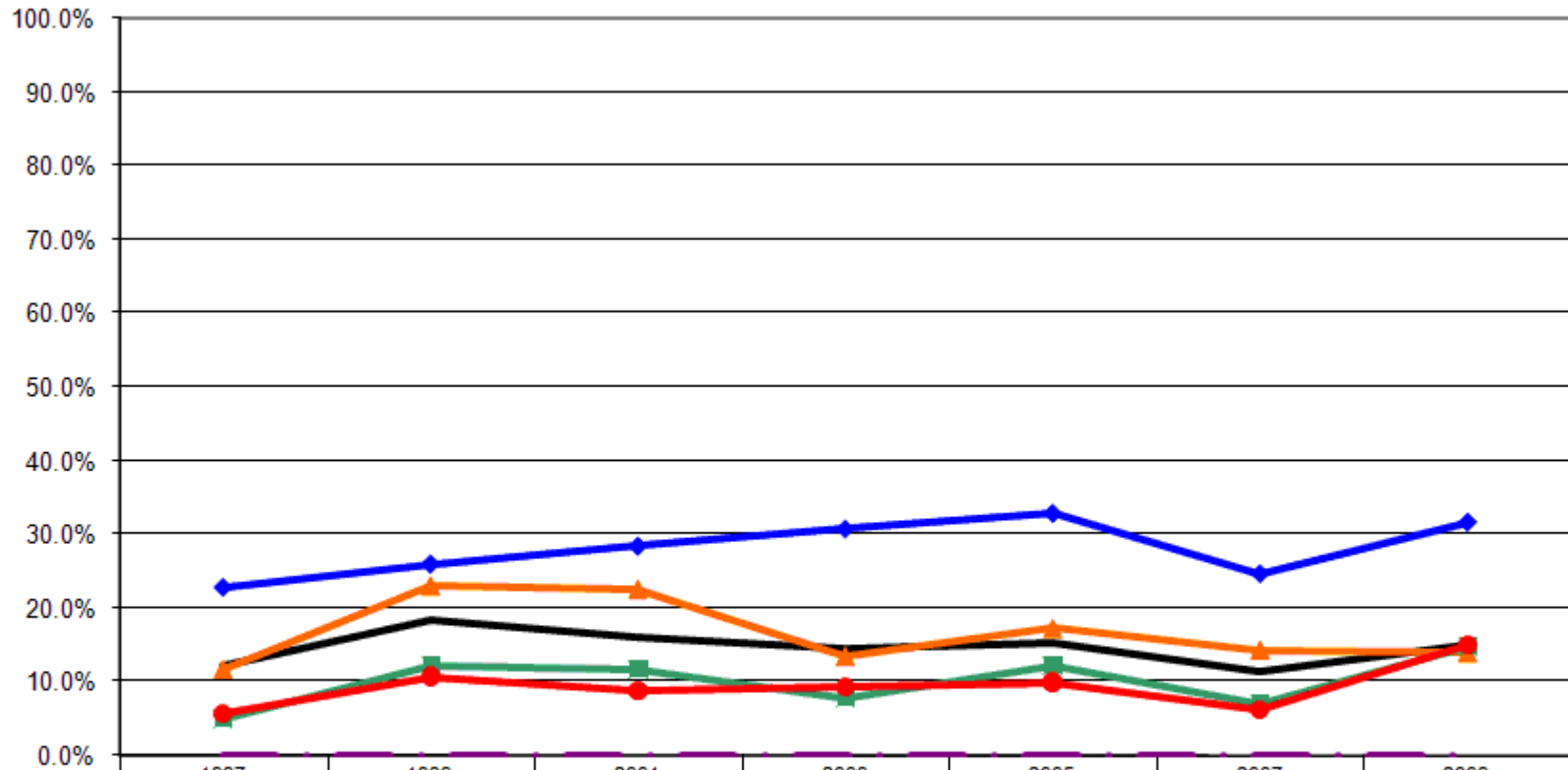
	1997	1999	2001	2003	2005	2007	2009
— Total	12.0%	18.4%	16.0%	14.5%	15.4%	11.3%	15.0%
—● 18-24	5.7%	7.5%	3.5%	7.2%	10.0%	0.0%	2.3%
—● 25-44	8.3%	12.0%	9.2%	9.1%	9.4%	6.1%	9.5%
—● 45-64	12.7%	19.6%	16.1%	17.9%	20.0%	13.9%	16.4%
—● 65+	19.4%	29.7%	28.9%	21.8%	18.4%	18.5%	27.0%
- - - US Total Rate*							0.0%

### Physical Health Not Good Eight or More Days By Employment Status



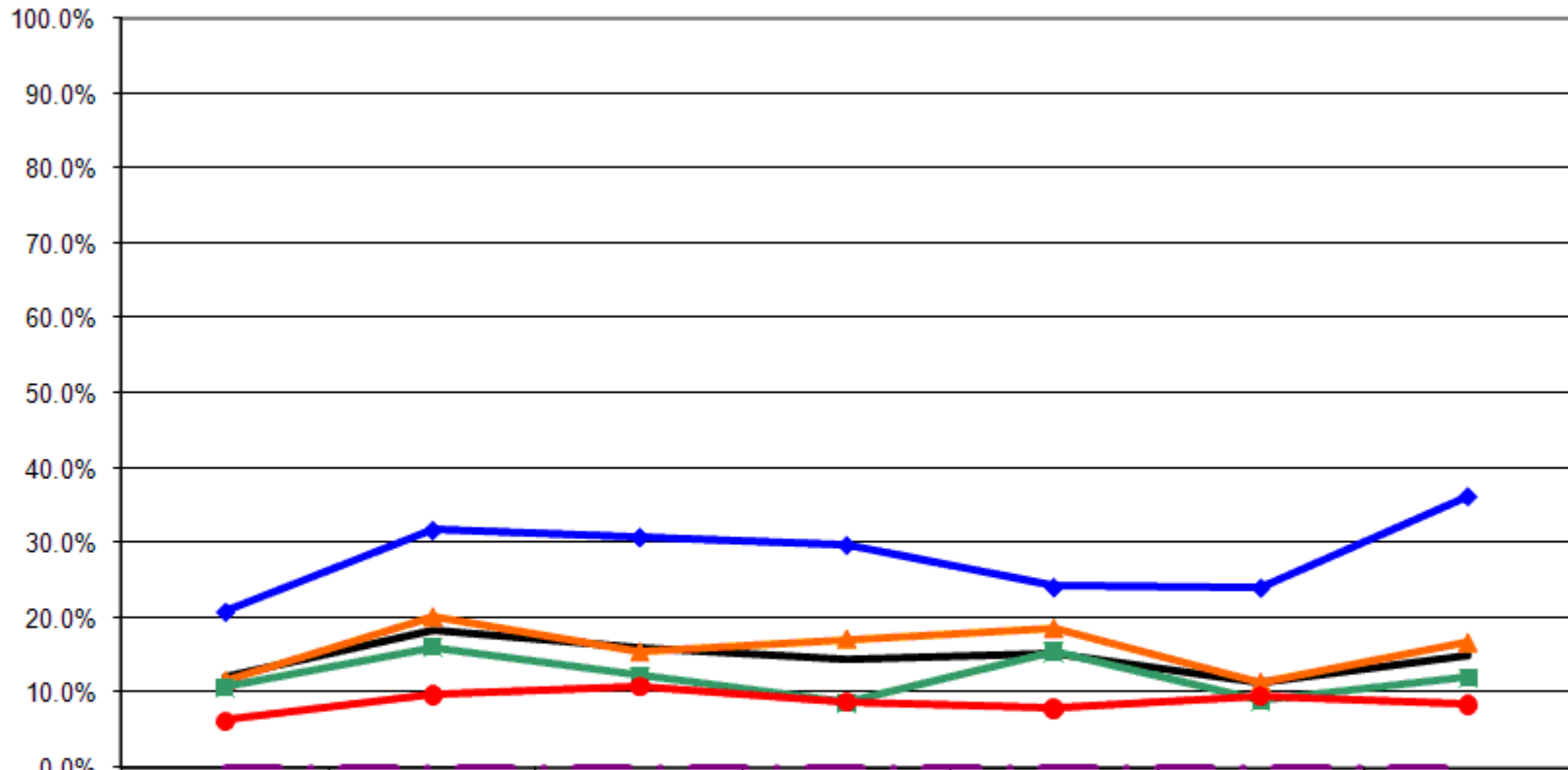
	1997	1999	2001	2003	2005	2007	2009
— Total	12.0%	18.4%	16.0%	14.5%	15.4%	11.3%	15.0%
—◆— Employed	7.3%	9.9%	6.3%	8.0%	8.1%	5.4%	6.0%
—●— Not Employed	18.2%	30.5%	27.9%	24.3%	24.5%	21.9%	24.8%
- - - - - US Total Rate*							0.0%

### Physical Health Not Good Eight or More Days By Income



	1997	1999	2001	2003	2005	2007	2009
Total	12.0%	18.4%	16.0%	14.5%	15.4%	11.3%	15.0%
<\$15K	22.8%	26.0%	28.4%	30.8%	32.9%	24.7%	31.7%
\$15-25K	11.6%	23.0%	22.6%	13.4%	17.2%	14.3%	13.9%
\$25-50K	5.1%	12.2%	11.7%	7.8%	12.3%	7.0%	14.8%
\$50K+	5.8%	10.8%	9.0%	9.4%	10.1%	6.3%	15.1%
US Total Rate*							0.0%

### Physical Health Not Good Eight or More Days By Education



	1997	1999	2001	2003	2005	2007	2009
— Total	12.0%	18.4%	16.0%	14.5%	15.4%	11.3%	15.0%
—◆— <HS	20.9%	31.7%	30.8%	29.7%	24.1%	24.1%	36.2%
—▲— HS or GED	11.6%	20.1%	15.5%	17.2%	18.6%	11.4%	16.7%
—■— Some College	10.8%	16.1%	12.3%	8.7%	15.5%	8.9%	12.0%
—●— College Degree +	6.3%	9.8%	11.0%	8.9%	8.0%	9.7%	8.5%
- - - US Total Rate*							0.0%

Interview Year 1997

		For how many days during the past 30 days was your physical health not good?					
		None	1-3 Days	4-6 Days	7-10 Days	11-19 Days	20 or more days
<b>Total</b>		<b>67.0%</b>	<b>12.2%</b>	<b>4.6%</b>	<b>6.6%</b>	<b>2.4%</b>	<b>7.2%</b>
Gender	Male	69.8%	13.7%	3.9%	5.1%	1.6%	5.9%
	Female	65.3%	11.3%	5.0%	7.5%	3.0%	8.0%
Age	18 - 24	69.8%	13.2%	9.4%	5.7%	1.9%	0.0%
	25 - 34	57.0%	20.3%	5.5%	11.7%	3.9%	1.6%
	35 - 44	68.4%	16.5%	4.5%	2.3%	1.5%	6.8%
	45 - 54	72.7%	12.1%	1.0%	5.1%	1.0%	8.1%
	55 - 64	63.0%	8.6%	8.6%	11.1%	.0%	8.6%
	65+	70.7%	3.8%	2.5%	5.1%	4.5%	13.4%
Employed	Yes	68.0%	16.8%	4.5%	6.0%	1.8%	2.9%
	No	65.7%	5.8%	4.7%	7.3%	3.3%	13.1%
Income	< \$15K	62.9%	7.2%	3.6%	7.2%	4.2%	15.0%
	\$15-25K	58.7%	18.3%	4.8%	8.7%	1.6%	7.9%
	\$25-50K	69.7%	16.9%	4.1%	5.6%	1.0%	2.6%
	\$50K +	77.5%	7.8%	5.9%	4.9%	3.9%	0.0%
Education	Less than High School	60.7%	9.8%	2.7%	9.8%	2.7%	14.3%
	High School Diploma or GED	68.1%	11.4%	5.1%	5.9%	2.4%	7.1%
	Some College/Technical	67.3%	12.3%	5.6%	6.2%	1.9%	6.8%
	College Degree or Higher	69.6%	16.0%	4.0%	5.6%	3.2%	1.6%

Interview Year 1999

		For how many days during the past 30 days was your physical health not good?					
		None	1-3 Days	4-6 Days	7-10 Days	11-19 Days	20 or more days
<b>Total</b>		<b>64.5%</b>	<b>11.3%</b>	<b>4.0%</b>	<b>4.5%</b>	<b>4.4%</b>	<b>11.2%</b>
Gender	Male	68.1%	9.7%	3.2%	3.5%	2.6%	12.9%
	Female	61.8%	12.7%	4.6%	5.3%	5.8%	9.9%
Age	18 - 24	71.6%	16.4%	3.0%	1.5%	3.0%	4.5%
	25 - 34	64.5%	19.6%	4.7%	4.7%	.9%	5.6%
	35 - 44	67.4%	12.8%	3.5%	5.0%	2.1%	9.2%
	45 - 54	57.3%	15.4%	3.4%	6.0%	2.6%	15.4%
	55 - 64	70.0%	6.0%	4.0%	3.0%	9.0%	8.0%
	65+	62.4%	2.9%	3.5%	5.3%	7.6%	18.2%
Employed	Yes	71.3%	13.6%	3.6%	3.9%	1.5%	6.1%
	No	55.8%	7.6%	4.3%	5.1%	9.1%	18.1%
Income	< \$15K	59.3%	9.3%	4.0%	4.7%	4.7%	18.0%
	\$15-25K	58.4%	10.2%	5.1%	5.8%	5.8%	14.6%
	\$25-50K	70.9%	11.8%	4.1%	4.1%	3.2%	5.9%
	\$50K +	69.7%	12.6%	4.2%	5.0%	2.5%	5.9%
Education	Less than High School	53.1%	11.1%	3.7%	3.7%	4.9%	23.5%
	High School Diploma or GED	67.9%	7.9%	2.9%	4.0%	4.7%	12.6%
	Some College/Technical	60.9%	14.9%	5.1%	5.6%	6.0%	7.4%
	College Degree or Higher	71.0%	13.0%	4.6%	4.6%	0.8%	6.1%

## Interview Year 2001

For how many days during the past 30 days was your physical health not good?

		None	1-3 Days	4-6 Days	7-10 Days	11-19 Days	20 or more days
<b>Total</b>		<b>63.3%</b>	<b>14.2%</b>	<b>4.1%</b>	<b>4.0%</b>	<b>3.3%</b>	<b>11.1%</b>
Gender	Male	66.3%	12.6%	3.7%	3.7%	1.8%	12.0%
	Female	60.9%	15.6%	4.5%	4.2%	4.5%	10.4%
Age	18 - 24	63.2%	26.3%	3.5%	5.3%	1.8%	0.0%
	25 - 34	70.5%	18.1%	1.9%	3.8%	2.9%	2.9%
	35 - 44	70.1%	14.6%	2.8%	4.9%	1.4%	6.3%
	45 - 54	59.0%	17.2%	4.5%	3.7%	4.5%	11.2%
	55 - 64	69.5%	9.5%	4.2%	3.2%	3.2%	10.5%
	65+	53.0%	8.6%	6.5%	3.2%	4.9%	23.8%
Employed	Yes	71.8%	17.3%	2.9%	3.4%	1.2%	3.4%
	No	52.5%	10.4%	5.7%	4.7%	6.0%	20.6%
Income	< \$15K	50.0%	13.0%	6.0%	6.0%	6.0%	19.0%
	\$15-25K	56.5%	13.7%	4.6%	3.1%	3.1%	19.1%
	\$25-50K	65.9%	15.1%	4.7%	4.7%	3.1%	6.6%
	\$50K +	72.4%	14.1%	3.2%	3.2%	1.9%	5.1%
Education	Less than High School	49.5%	7.9%	5.0%	7.9%	4.0%	25.7%
	High School Diploma or GED	64.8%	14.4%	2.6%	4.4%	3.7%	10.0%
	Some College/Technical	63.8%	17.1%	5.7%	3.8%	2.9%	6.7%
	College Degree or Higher	69.9%	14.4%	4.1%	0.7%	2.7%	8.2%

## Interview Year 2003

For how many days during the past 30 days was your physical health not good?

		None	1-3 Days	4-6 Days	7-10 Days	11-19 Days	20 or more days
<b>Total</b>		<b>65.7%</b>	<b>12.5%</b>	<b>3.7%</b>	<b>4.8%</b>	<b>4.0%</b>	<b>9.3%</b>
Gender	Male	73.0%	8.3%	2.9%	3.5%	5.1%	7.3%
	Female	58.7%	16.6%	4.5%	6.0%	3.0%	11.1%
Age	18 - 24	63.8%	18.8%	5.8%	4.3%	4.3%	2.9%
	25 - 34	70.3%	16.2%	2.7%	5.4%	3.6%	1.8%
	35 - 44	72.1%	9.3%	3.1%	5.4%	3.1%	7.0%
	45 - 54	61.7%	10.3%	5.6%	4.7%	4.7%	13.1%
	55 - 64	61.0%	14.6%	6.1%	4.9%	2.4%	11.0%
	65+	62.8%	10.1%	1.4%	4.1%	5.4%	16.2%
Employed	Yes	70.8%	14.8%	3.3%	4.3%	2.8%	3.8%
	No	58.4%	8.8%	4.0%	5.2%	6.0%	17.6%
Income	< \$15K	45.5%	14.9%	4.0%	5.0%	5.9%	24.8%
	\$15-25K	64.5%	6.5%	5.4%	10.8%	4.3%	8.6%
	\$25-50K	68.6%	17.0%	4.3%	3.7%	2.7%	3.7%
	\$50K +	75.5%	10.7%	2.5%	3.8%	3.8%	3.8%
Education	Less than High School	46.5%	14.1%	0.0%	11.3%	7.0%	21.1%
	High School Diploma or GED	62.4%	13.3%	4.2%	4.6%	3.8%	11.8%
	Some College/Technical	74.7%	8.4%	5.1%	3.9%	2.8%	5.1%
	College Degree or Higher	70.7%	15.0%	3.0%	3.0%	4.5%	3.8%

Interview Year 2005

		For how many days during the past 30 days was your physical health not good?					
		None	1-3 Days	4-6 Days	7-10 Days	11-19 Days	20 or more days
<b>Total</b>		<b>68.5%</b>	<b>11.0%</b>	<b>3.0%</b>	<b>3.9%</b>	<b>2.4%</b>	<b>11.3%</b>
Gender	Male	74.2%	7.8%	2.3%	4.7%	1.2%	9.8%
	Female	65.0%	12.9%	3.4%	3.4%	3.1%	12.2%
Age	18 - 24	72.5%	7.5%	5.0%	7.5%	.0%	7.5%
	25 - 34	68.5%	20.7%	2.2%	.0%	4.3%	4.3%
	35 - 44	71.5%	13.8%	2.3%	3.1%	3.1%	6.2%
	45 - 54	65.5%	10.3%	5.2%	4.3%	2.6%	12.1%
	55 - 64	65.6%	8.3%	1.0%	4.2%	3.1%	17.7%
	65+	68.6%	6.3%	3.1%	5.2%	1.0%	15.7%
Employed	Yes	73.7%	13.1%	2.8%	3.1%	2.3%	4.9%
	No	61.1%	8.1%	3.2%	4.9%	2.5%	20.1%
Income	< \$15K	43.3%	17.9%	1.5%	3.0%	3.0%	31.3%
	\$15-25K	64.3%	10.7%	2.7%	7.1%	1.8%	13.4%
	\$25-50K	72.3%	10.6%	3.2%	4.3%	3.2%	6.4%
	\$50K +	74.3%	11.8%	2.1%	2.7%	2.1%	7.0%
Education	Less than High School	62.0%	6.0%	4.0%	2.0%	0.0%	26.0%
	High School Diploma or GED	66.5%	9.3%	2.8%	4.8%	2.4%	14.1%
	Some College/Technical	66.3%	12.9%	3.4%	3.4%	3.9%	10.1%
	College Degree or Higher	74.7%	12.9%	2.6%	3.6%	1.5%	4.6%

Interview Year 2007

		For how many days during the past 30 days was your physical health not good?					
		None	1-3 Days	4-6 Days	7-10 Days	11-19 Days	20 or more days
<b>Total</b>		<b>69.5%</b>	<b>11.9%</b>	<b>5.9%</b>	<b>3.3%</b>	<b>2.0%</b>	<b>7.4%</b>
Gender	Male	73.6%	9.0%	3.9%	3.0%	1.5%	9.0%
	Female	65.6%	14.5%	7.8%	3.6%	2.5%	5.9%
Age	18 - 24	80.0%	14.3%	5.7%	0.0%	0.0%	0.0%
	25 - 34	81.2%	12.0%	1.7%	3.4%	0.9%	0.9%
	35 - 44	71.3%	13.2%	5.4%	5.4%	1.6%	3.1%
	45 - 54	67.1%	11.2%	7.7%	0.0%	2.8%	11.2%
	55 - 64	67.9%	12.1%	5.0%	3.6%	1.4%	10.0%
	65+	57.6%	10.4%	9.6%	5.6%	4.0%	12.8%
Employed	Yes	76.9%	12.4%	4.8%	2.0%	0.7%	3.3%
	No	56.6%	9.6%	8.2%	5.9%	4.6%	15.1%
Income	< \$15K	49.3%	14.1%	11.3%	2.8%	4.2%	18.3%
	\$15-25K	63.2%	8.8%	8.8%	5.9%	4.4%	8.8%
	\$25-50K	69.9%	14.2%	6.6%	3.5%	1.3%	4.4%
	\$50K +	79.2%	11.1%	3.4%	1.4%	0.5%	4.3%
Education	Less than High School	53.8%	11.5%	7.7%	7.7%	3.8%	15.4%
	High School Diploma or GED	67.3%	12.7%	7.3%	2.7%	2.3%	7.7%
	Some College/Technical	70.9%	11.7%	6.7%	4.0%	0.9%	5.8%
	College Degree or Higher	76.6%	11.0%	1.9%	1.9%	1.9%	6.5%

		For how many days during the past 30 days was your physical health not good?					
		None	1-3 Days	4-6 Days	7-10 Days	11-19 Days	20 or more days
<b>Total</b>		<b>61.8%</b>	<b>14.9%</b>	<b>7.2%</b>	<b>3.9%</b>	<b>4.0%</b>	<b>8.2%</b>
Gender	Male	61.1%	15.9%	6.9%	5.3%	4.0%	6.9%
	Female	62.6%	14.0%	7.4%	2.6%	4.0%	9.4%
Age	18 - 24	80.2%	14.8%	2.5%	0.0%	1.2%	1.2%
	25 - 34	66.0%	15.1%	6.6%	6.6%	1.9%	3.8%
	35 - 44	63.8%	21.0%	5.7%	1.9%	3.8%	3.8%
	45 - 54	50.9%	26.9%	11.1%	2.8%	2.8%	5.6%
	55 - 64	54.9%	11.8%	9.8%	4.9%	2.0%	16.7%
	65+	59.4%	5.5%	6.7%	5.5%	9.1%	13.9%
Employed	Yes	68.2%	18.8%	6.5%	1.7%	2.0%	2.8%
	No	54.9%	10.7%	7.8%	6.3%	6.3%	14.1%
Income	< \$15K	55.2%	10.3%	1.7%	0.0%	3.4%	29.3%
	\$15-25K	63.1%	12.3%	7.7%	1.5%	9.2%	6.2%
	\$25-50K	58.6%	17.2%	8.3%	4.5%	4.5%	7.0%
	\$50K +	68.3%	12.2%	2.4%	2.4%	4.9%	9.8%
Education	Less than High School	50.0%	7.1%	2.4%	0.0%	16.7%	23.8%
	High School Diploma or GED	56.7%	16.8%	8.1%	6.4%	4.0%	8.1%
	Some College/Technical	62.7%	15.7%	9.3%	2.9%	3.4%	5.9%
	College Degree or Higher	76.0%	12.0%	3.2%	0.8%	0.8%	7.2%

			Now thinking about your physical health, for how many days during the past 30 days was your physical health not good?					
			None	1-3 Days	4-6 Days	7-10 Days	11-19 Days	20 or more days
Gender	1997	Male	69.8%	13.7%	3.9%	5.1%	1.6%	5.9%
		Female	65.3%	11.3%	5.0%	7.5%	3.0%	8.0%
	1999	Male	68.1%	9.7%	3.2%	3.5%	2.6%	12.9%
		Female	61.8%	12.7%	4.6%	5.3%	5.8%	9.9%
	2001	Male	66.3%	12.6%	3.7%	3.7%	1.8%	12.0%
		Female	60.9%	15.6%	4.5%	4.2%	4.5%	10.4%
	2003	Male	73.0%	8.3%	2.9%	3.5%	5.1%	7.3%
		Female	58.7%	16.6%	4.5%	6.0%	3.0%	11.1%
	2005	Male	74.2%	7.8%	2.3%	4.7%	1.2%	9.8%
		Female	65.0%	12.9%	3.4%	3.4%	3.1%	12.2%
	2007	Male	73.6%	9.0%	3.9%	3.0%	1.5%	9.0%
		Female	65.6%	14.5%	7.8%	3.6%	2.5%	5.9%
	2009	Male	61.1%	15.9%	6.9%	5.3%	4.0%	6.9%
		Female	62.6%	14.0%	7.4%	2.6%	4.0%	9.4%

Now thinking about your physical health, for how many days during the past 30 days was your physical health not good?

			None	1-3 Days	4-6 Days	7-10 Days	11-19 Days	20 or more days
Income Level	1997	< \$15K	62.9%	7.2%	3.6%	7.2%	4.2%	15.0%
		\$15-25K	58.7%	18.3%	4.8%	8.7%	1.6%	7.9%
		\$25-50K	69.7%	16.9%	4.1%	5.6%	1.0%	2.6%
		\$50K +	77.5%	7.8%	5.9%	4.9%	3.9%	0.0%
	1999	< \$15K	59.3%	9.3%	4.0%	4.7%	4.7%	18.0%
		\$15-25K	58.4%	10.2%	5.1%	5.8%	5.8%	14.6%
		\$25-50K	70.9%	11.8%	4.1%	4.1%	3.2%	5.9%
		\$50K +	69.7%	12.6%	4.2%	5.0%	2.5%	5.9%
	2001	< \$15K	50.0%	13.0%	6.0%	6.0%	6.0%	19.0%
		\$15-25K	56.5%	13.7%	4.6%	3.1%	3.1%	19.1%
		\$25-50K	65.9%	15.1%	4.7%	4.7%	3.1%	6.6%
		\$50K +	72.4%	14.1%	3.2%	3.2%	1.9%	5.1%
	2003	< \$15K	45.5%	14.9%	4.0%	5.0%	5.9%	24.8%
		\$15-25K	64.5%	6.5%	5.4%	10.8%	4.3%	8.6%
		\$25-50K	68.6%	17.0%	4.3%	3.7%	2.7%	3.7%
		\$50K +	75.5%	10.7%	2.5%	3.8%	3.8%	3.8%
	2005	< \$15K	43.3%	17.9%	1.5%	3.0%	3.0%	31.3%
		\$15-25K	64.3%	10.7%	2.7%	7.1%	1.8%	13.4%
		\$25-50K	72.3%	10.6%	3.2%	4.3%	3.2%	6.4%
		\$50K +	74.3%	11.8%	2.1%	2.7%	2.1%	7.0%
	2007	< \$15K	49.3%	14.1%	11.3%	2.8%	4.2%	18.3%
		\$15-25K	63.2%	8.8%	8.8%	5.9%	4.4%	8.8%
		\$25-50K	69.9%	14.2%	6.6%	3.5%	1.3%	4.4%
		\$50K +	79.2%	11.1%	3.4%	1.4%	0.5%	4.3%
	2009	< \$15K	55.2%	10.3%	1.7%	0.0%	3.4%	29.3%
		\$15-25K	63.1%	12.3%	7.7%	1.5%	9.2%	6.2%
		\$25-50K	58.6%	17.2%	8.3%	4.5%	4.5%	7.0%
		\$50K +	68.3%	12.2%	2.4%	2.4%	4.9%	9.8%

Now thinking about your physical health, for how many days during the past 30 days was your physical health not good?

			None	1-3 Days	4-6 Days	7-10 Days	11-19 Days	20 or more days
Age	1997	18 - 24	69.8%	13.2%	9.4%	5.7%	1.9%	0.0%
		25 - 34	57.0%	20.3%	5.5%	11.7%	3.9%	1.6%
		35 - 44	68.4%	16.5%	4.5%	2.3%	1.5%	6.8%
		45 - 54	72.7%	12.1%	1.0%	5.1%	1.0%	8.1%
		55 - 64	63.0%	8.6%	8.6%	11.1%	0.0%	8.6%
		65+	70.7%	3.8%	2.5%	5.1%	4.5%	13.4%
	1999	18 - 24	71.6%	16.4%	3.0%	1.5%	3.0%	4.5%
		25 - 34	64.5%	19.6%	4.7%	4.7%	0.9%	5.6%
		35 - 44	67.4%	12.8%	3.5%	5.0%	2.1%	9.2%
		45 - 54	57.3%	15.4%	3.4%	6.0%	2.6%	15.4%
		55 - 64	70.0%	6.0%	4.0%	3.0%	9.0%	8.0%
		65+	62.4%	2.9%	3.5%	5.3%	7.6%	18.2%
	2001	18 - 24	63.2%	26.3%	3.5%	5.3%	1.8%	0.0%
		25 - 34	70.5%	18.1%	1.9%	3.8%	2.9%	2.9%
		35 - 44	70.1%	14.6%	2.8%	4.9%	1.4%	6.3%
		45 - 54	59.0%	17.2%	4.5%	3.7%	4.5%	11.2%
		55 - 64	69.5%	9.5%	4.2%	3.2%	3.2%	10.5%
		65+	53.0%	8.6%	6.5%	3.2%	4.9%	23.8%
	2003	18 - 24	63.8%	18.8%	5.8%	4.3%	4.3%	2.9%
		25 - 34	70.3%	16.2%	2.7%	5.4%	3.6%	1.8%
		35 - 44	72.1%	9.3%	3.1%	5.4%	3.1%	7.0%
		45 - 54	61.7%	10.3%	5.6%	4.7%	4.7%	13.1%
		55 - 64	61.0%	14.6%	6.1%	4.9%	2.4%	11.0%
		65+	62.8%	10.1%	1.4%	4.1%	5.4%	16.2%
	2005	18 - 24	72.5%	7.5%	5.0%	7.5%	0.0%	7.5%
		25 - 34	68.5%	20.7%	2.2%	0.0%	4.3%	4.3%
		35 - 44	71.5%	13.8%	2.3%	3.1%	3.1%	6.2%
		45 - 54	65.5%	10.3%	5.2%	4.3%	2.6%	12.1%
		55 - 64	65.6%	8.3%	1.0%	4.2%	3.1%	17.7%
		65+	68.6%	6.3%	3.1%	5.2%	1.0%	15.7%
2007	18 - 24	80.0%	14.3%	5.7%	0.0%	0.0%	0.0%	
	25 - 34	81.2%	12.0%	1.7%	3.4%	0.9%	0.9%	
	35 - 44	71.3%	13.2%	5.4%	5.4%	1.6%	3.1%	
	45 - 54	67.1%	11.2%	7.7%	0.0%	2.8%	11.2%	
	55 - 64	67.9%	12.1%	5.0%	3.6%	1.4%	10.0%	
	65+	57.6%	10.4%	9.6%	5.6%	4.0%	12.8%	
2009	18 - 24	80.2%	14.8%	2.5%	0.0%	1.2%	1.2%	
	25 - 34	66.0%	15.1%	6.6%	6.6%	1.9%	3.8%	
	35 - 44	63.8%	21.0%	5.7%	1.9%	3.8%	3.8%	
	45 - 54	50.9%	26.9%	11.1%	2.8%	2.8%	5.6%	
	55 - 64	54.9%	11.8%	9.8%	4.9%	2.0%	16.7%	
	65+	59.4%	5.5%	6.7%	5.5%	9.1%	13.9%	

Now thinking about your physical health, for how many days during the past 30 days was your physical health not good?

			None	1-3 Days	4-6 Days	7-10 Days	11-19 Days	20 or more days
Employment Status	1997	Employed	68.0%	16.8%	4.5%	6.0%	1.8%	2.9%
		Not Employed	65.7%	5.8%	4.7%	7.3%	3.3%	13.1%
	1999	Employed	71.3%	13.6%	3.6%	3.9%	1.5%	6.1%
		Not Employed	55.8%	7.6%	4.3%	5.1%	9.1%	18.1%
	2001	Employed	71.8%	17.3%	2.9%	3.4%	1.2%	3.4%
		Not Employed	52.5%	10.4%	5.7%	4.7%	6.0%	20.6%
	2003	Employed	70.8%	14.8%	3.3%	4.3%	2.8%	3.8%
		Not Employed	58.4%	8.8%	4.0%	5.2%	6.0%	17.6%
	2005	Employed	73.7%	13.1%	2.8%	3.1%	2.3%	4.9%
		Not Employed	61.1%	8.1%	3.2%	4.9%	2.5%	20.1%
	2007	Employed	76.9%	12.4%	4.8%	2.0%	0.7%	3.3%
		Not Employed	56.6%	9.6%	8.2%	5.9%	4.6%	15.1%
	2009	Employed	68.2%	18.8%	6.5%	1.7%	2.0%	2.8%
		Not Employed	54.9%	10.7%	7.8%	6.3%	6.3%	14.1%

Now thinking about your physical health, for how many days during the  
past 30 days was your physical health not good?

			None	1-3 Days	4-6 Days	7-10 Days	11-19 Days	20 or more days
Education Level	1997	Less than High School	60.7%	9.8%	2.7%	9.8%	2.7%	14.3%
		High School Diploma/GED	68.1%	11.4%	5.1%	5.9%	2.4%	7.1%
		Some College/Technical	67.3%	12.3%	5.6%	6.2%	1.9%	6.8%
		College Degree or Higher	69.6%	16.0%	4.0%	5.6%	3.2%	1.6%
	1999	Less than High School	53.1%	11.1%	3.7%	3.7%	4.9%	23.5%
		High School Diploma/GED	67.9%	7.9%	2.9%	4.0%	4.7%	12.6%
		Some College/Technical	60.9%	14.9%	5.1%	5.6%	6.0%	7.4%
		College Degree or Higher	71.0%	13.0%	4.6%	4.6%	0.8%	6.1%
	2001	Less than High School	49.5%	7.9%	5.0%	7.9%	4.0%	25.7%
		High School Diploma/GED	64.8%	14.4%	2.6%	4.4%	3.7%	10.0%
		Some College/Technical	63.8%	17.1%	5.7%	3.8%	2.9%	6.7%
		College Degree or Higher	69.9%	14.4%	4.1%	0.7%	2.7%	8.2%
	2003	Less than High School	46.5%	14.1%	0.0%	11.3%	7.0%	21.1%
		High School Diploma/GED	62.4%	13.3%	4.2%	4.6%	3.8%	11.8%
		Some College/Technical	74.7%	8.4%	5.1%	3.9%	2.8%	5.1%
		College Degree or Higher	70.7%	15.0%	3.0%	3.0%	4.5%	3.8%
	2005	Less than High School	62.0%	6.0%	4.0%	2.0%	0.0%	26.0%
		High School Diploma/GED	66.5%	9.3%	2.8%	4.8%	2.4%	14.1%
		Some College/Technical	66.3%	12.9%	3.4%	3.4%	3.9%	10.1%
		College Degree or Higher	74.7%	12.9%	2.6%	3.6%	1.5%	4.6%
2007	Less than High School	53.8%	11.5%	7.7%	7.7%	3.8%	15.4%	
	High School Diploma/GED	67.3%	12.7%	7.3%	2.7%	2.3%	7.7%	
	Some College/Technical	70.9%	11.7%	6.7%	4.0%	0.9%	5.8%	
	College Degree or Higher	76.6%	11.0%	1.9%	1.9%	1.9%	6.5%	
2009	Less than High School	50.0%	7.1%	2.4%	0.0%	16.7%	23.8%	
	High School Diploma/GED	56.7%	16.8%	8.1%	6.4%	4.0%	8.1%	
	Some College/Technical	62.7%	15.7%	9.3%	2.9%	3.4%	5.9%	
	College Degree or Higher	76.0%	12.0%	3.2%	0.8%	0.8%	7.2%	