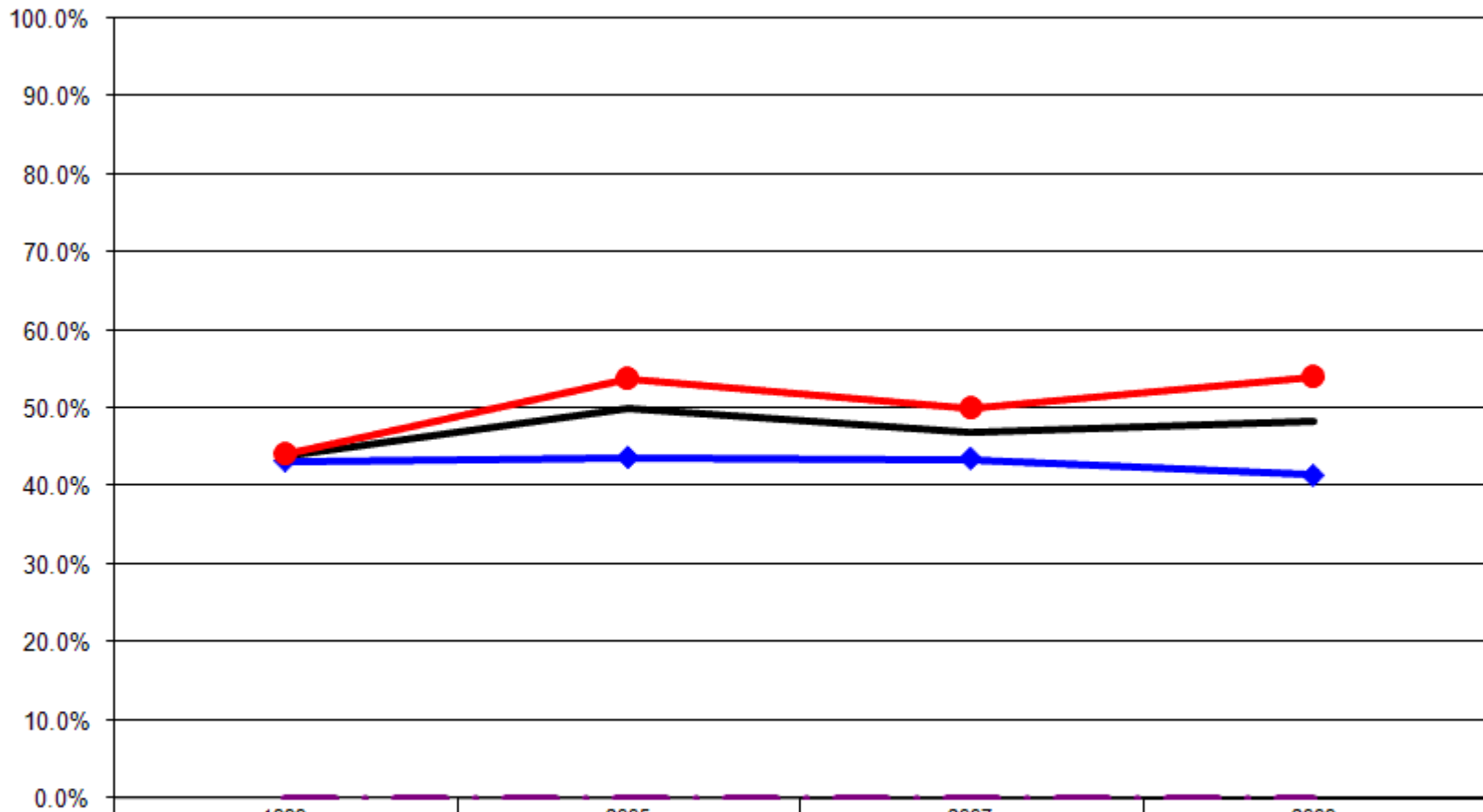


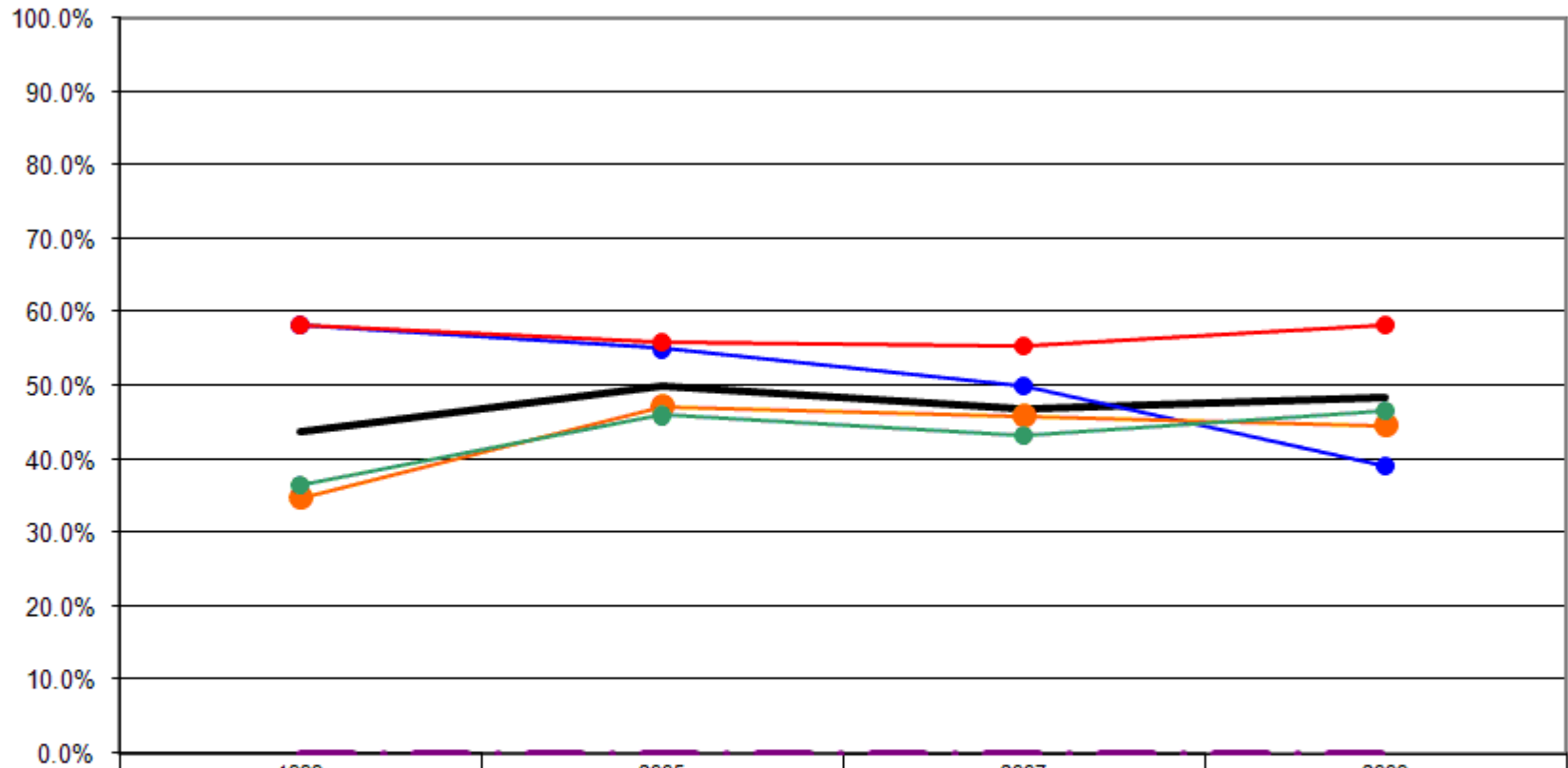
12 Year Review Always get the social and emotional support needed

Always Get Social & Emotional Support By Gender



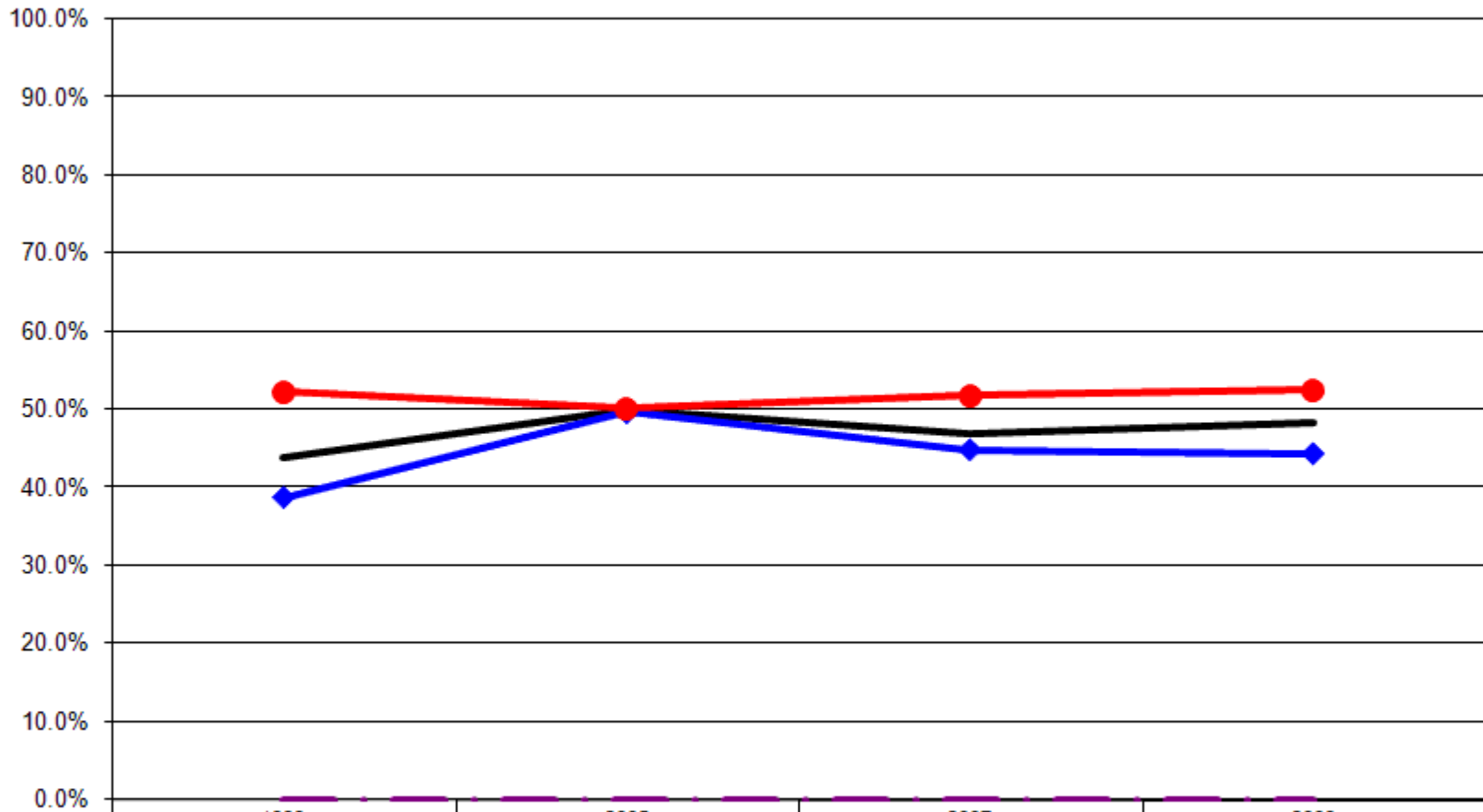
	1999	2005	2007	2009
— Total	43.8%	50.1%	46.9%	48.4%
—◆ Male	43.3%	43.7%	43.6%	41.4%
—● Female	44.2%	53.9%	50.0%	54.1%
- - - US Total Rate*	48.4%			

Always Get Social & Emotional Support By Age



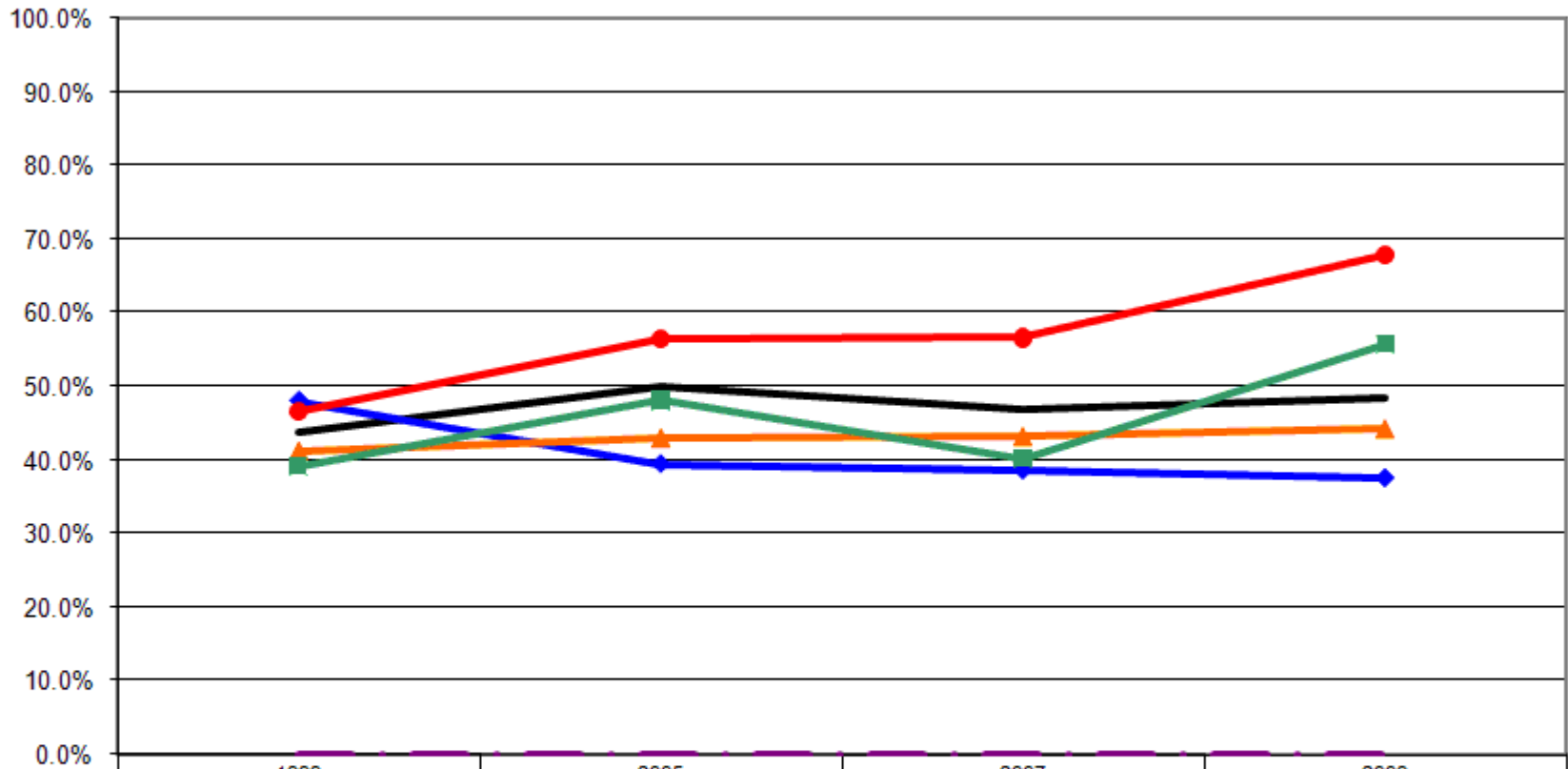
	1999	2005	2007	2009
Total	43.8%	50.1%	46.9%	48.4%
18-24	58.2%	55.0%	50.0%	39.2%
25-44	34.8%	47.3%	46.1%	44.6%
45-64	36.5%	46.0%	43.3%	46.7%
65+	58.3%	56.0%	55.5%	58.3%
US Total Rate*	0.0%	0.0%	0.0%	0.0%

Always Get Social & Emotional Support By Employment Status



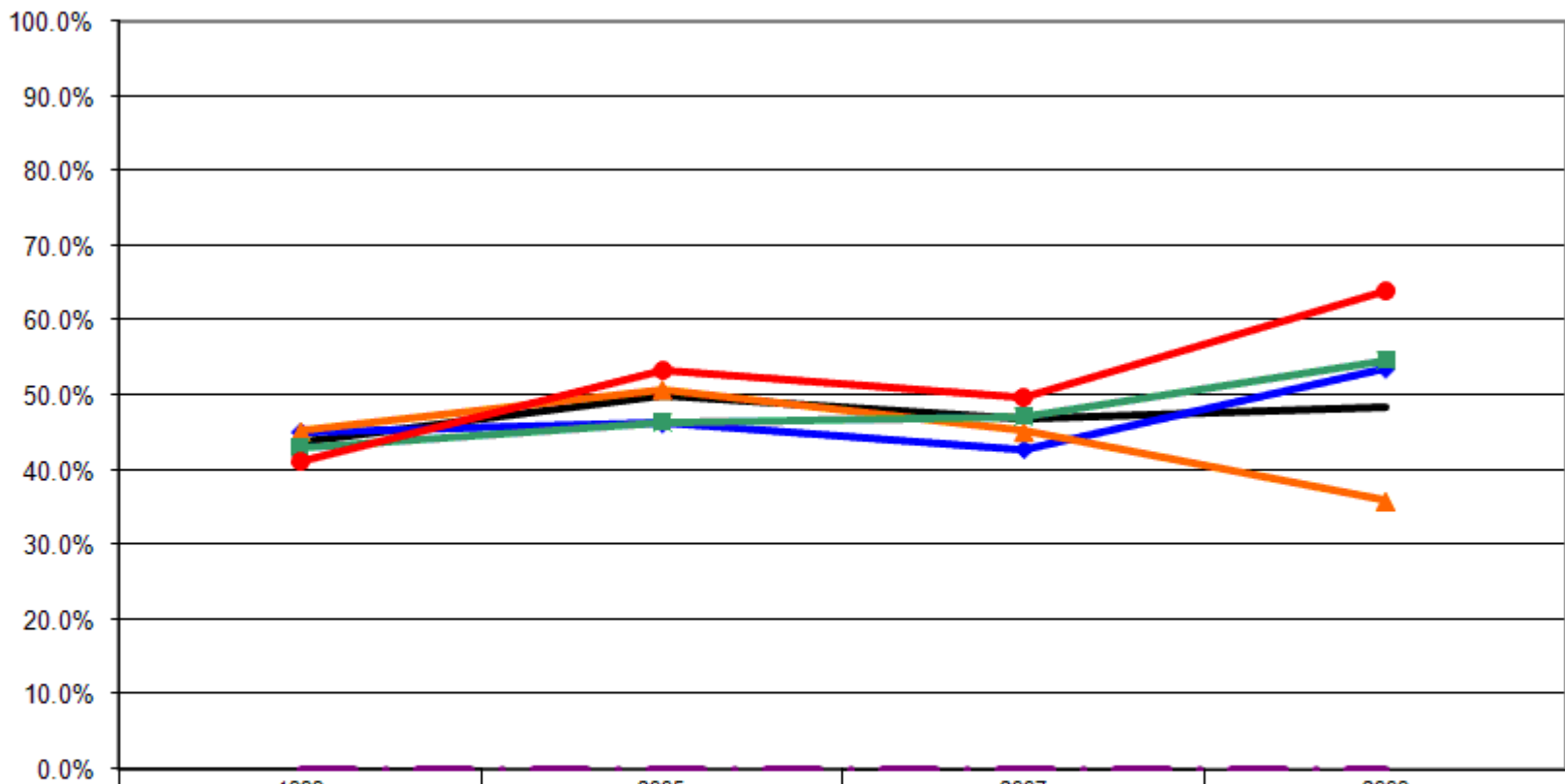
	1999	2005	2007	2009
— Total	43.8%	50.1%	46.9%	48.4%
—◆— Employed	38.7%	49.7%	44.9%	44.4%
—●— Not Employed	52.3%	50.2%	51.9%	52.5%
- - - - US Total Rate*				

Always Get Social & Emotional Support By Income



	1999	2005	2007	2009
— Total	43.8%	50.1%	46.9%	48.4%
—◆— <\$15K	48.1%	39.4%	38.6%	37.5%
—▲— \$15-25K	41.3%	43.1%	43.3%	44.3%
—■— \$25-50K	39.2%	48.1%	40.2%	55.7%
—●— \$50K+	46.7%	56.5%	56.7%	67.9%
- - - US Total Rate*				

Always Get Social & Emotional Support By Education



	1999	2005	2007	2009
— Total	43.8%	50.1%	46.9%	48.4%
—◆— <HS	45.1%	46.3%	42.9%	53.5%
—▲— HS or GED	45.2%	50.8%	45.2%	35.9%
—■— Some College	43.1%	46.4%	47.3%	54.7%
—●— College Degree +	41.2%	53.4%	49.7%	63.9%
- - - US Total Rate*				

Interview Year 1999

		How often do you get the social and emotional support you need?				
		Always	Usually	Sometimes	Rarely	Never
Total		43.8%	37.2%	13.7%	3.5%	1.8%
Gender	Male	43.3%	38.5%	13.1%	2.2%	2.9%
	Female	44.2%	36.2%	14.1%	4.5%	1.0%
Age	18 - 24	58.2%	25.4%	11.9%	4.5%	0.0%
	25 - 34	37.6%	42.2%	16.5%	0.9%	2.8%
	35 - 44	32.6%	38.3%	20.6%	5.7%	2.8%
	45 - 54	31.7%	44.2%	17.5%	5.0%	1.7%
	55 - 64	48.5%	41.4%	5.1%	3.0%	2.0%
	65+	56.8%	30.7%	9.1%	2.3%	1.1%
Employed	Yes	38.7%	41.1%	14.7%	3.6%	1.9%
	No	52.3%	31.7%	11.7%	2.5%	1.8%
Income	< \$15K	48.1%	29.2%	13.6%	6.5%	2.6%
	\$15-25K	41.3%	39.1%	15.2%	2.2%	2.2%
	\$25-50K	39.2%	39.2%	15.8%	4.1%	1.8%
	\$50K +	46.7%	42.5%	8.3%	2.5%	0.0%
Education	Less than High School	45.1%	28.0%	15.9%	6.1%	4.9%
	High School Diploma or GED	45.2%	35.3%	13.8%	3.2%	2.5%
	Some College/Technical	43.1%	39.0%	13.3%	3.7%	0.9%
	College Degree or Higher	41.2%	44.3%	12.2%	2.3%	0.0%

Interview Year 2005

		How often do you get the social and emotional support you need?				
		Always	Usually	Sometimes	Rarely	Never
Total		50.1%	31.0%	13.6%	2.8%	2.5%
Gender	Male	43.7%	36.6%	13.4%	3.1%	3.1%
	Female	53.9%	27.6%	13.8%	2.6%	2.1%
Age	18 - 24	55.0%	25.0%	12.5%	5.0%	2.5%
	25 - 34	50.5%	34.1%	11.0%	3.3%	1.1%
	35 - 44	45.0%	35.7%	15.5%	2.3%	1.6%
	45 - 54	47.0%	32.5%	13.7%	1.7%	5.1%
	55 - 64	44.9%	32.7%	13.3%	6.1%	3.1%
	65+	56.0%	26.4%	14.0%	1.6%	2.1%
Employed	Yes	49.7%	35.6%	11.3%	2.3%	1.0%
	No	50.2%	24.9%	16.8%	3.5%	4.6%
Income	< \$15K	39.4%	23.9%	21.1%	7.0%	8.5%
	\$15-25K	43.1%	32.8%	16.4%	2.6%	5.2%
	\$25-50K	48.1%	38.5%	11.8%	1.1%	0.5%
	\$50K +	56.5%	30.1%	10.8%	2.7%	0.0%
Education	Less than High School	46.3%	24.1%	14.8%	5.6%	9.3%
	High School Diploma or GED	50.8%	30.2%	12.5%	4.0%	2.4%
	Some College/Technical	46.4%	30.7%	18.4%	1.7%	2.8%
	College Degree or Higher	53.4%	34.6%	10.5%	1.6%	0.0%

Interview Year 2007

		How often do you get the social and emotional support you need?				
		Always	Usually	Sometimes	Rarely	Never
Total		46.9%	39.0%	10.3%	2.4%	1.5%
Gender	Male	43.6%	43.3%	8.3%	3.1%	1.8%
	Female	50.0%	35.0%	12.1%	1.7%	1.2%
Age	18 - 24	50.0%	41.2%	5.9%	2.9%	0.0%
	25 - 34	44.3%	42.6%	12.2%	0.0%	0.9%
	35 - 44	47.6%	37.3%	9.5%	3.2%	2.4%
	45 - 54	41.7%	43.8%	11.8%	2.1%	0.7%
	55 - 64	45.1%	43.6%	7.5%	2.3%	1.5%
	65+	55.5%	26.1%	11.8%	4.2%	2.5%
Employed	Yes	44.9%	43.6%	9.1%	1.3%	1.1%
	No	51.9%	29.5%	12.4%	3.8%	2.4%
Income	< \$15K	38.6%	35.7%	14.3%	7.1%	4.3%
	\$15-25K	43.3%	37.3%	17.9%	1.5%	0.0%
	\$25-50K	40.2%	46.4%	9.4%	2.7%	1.3%
	\$50K +	56.7%	39.4%	2.5%	0.5%	1.0%
Education	Less than High School	42.9%	20.4%	18.4%	12.2%	6.1%
	High School Diploma or GED	45.2%	37.2%	14.0%	2.0%	1.6%
	Some College/Technical	47.3%	42.8%	6.8%	1.8%	1.4%
	College Degree or Higher	49.7%	43.0%	6.7%	0.7%	0.0%

Interview Year 2009

		How often do you get the social and emotional support you need?				
		Always	Usually	Sometimes	Rarely	Never
Total		48.4%	37.1%	12.1%	1.3%	1.1%
Gender	Male	41.4%	41.8%	15.0%	0.7%	1.1%
	Female	54.1%	33.1%	9.8%	1.8%	1.2%
Age	18 - 24	39.2%	45.9%	13.5%	0.0%	1.4%
	25 - 34	49.5%	34.3%	14.1%	0.0%	2.0%
	35 - 44	39.6%	37.5%	16.7%	4.2%	2.1%
	45 - 54	44.7%	39.4%	13.8%	1.1%	1.1%
	55 - 64	48.9%	34.4%	13.3%	2.2%	1.1%
	65+	58.3%	35.0%	6.1%	0.6%	0.0%
Employed	Yes	44.4%	39.4%	13.7%	1.0%	1.6%
	No	52.5%	34.7%	10.6%	1.7%	0.7%
Income	< \$15K	37.5%	37.5%	12.5%	6.3%	6.3%
	\$15-25K	44.3%	41.0%	11.5%	1.6%	1.6%
	\$25-50K	55.7%	33.6%	9.4%	0.7%	0.7%
	\$50K +	67.9%	27.4%	3.6%	0.0%	1.2%
Education	Less than High School	53.5%	23.3%	16.3%	7.0%	0.0%
	High School Diploma or GED	35.9%	44.7%	16.0%	1.1%	2.3%
	Some College/Technical	54.7%	34.2%	9.5%	1.1%	0.5%
	College Degree or Higher	63.9%	29.5%	6.6%	0.0%	0.0%

			How often do you get the social and emotional support you need?				
			Always	Usually	Sometimes	Rarely	Never
Gender	1999	Male	43.3%	38.5%	13.1%	2.2%	2.9%
		Female	44.2%	36.2%	14.1%	4.5%	1.0%
	2005	Male	43.7%	36.6%	13.4%	3.1%	3.1%
		Female	53.9%	27.6%	13.8%	2.6%	2.1%
	2007	Male	43.6%	43.3%	8.3%	3.1%	1.8%
		Female	50.0%	35.0%	12.1%	1.7%	1.2%
	2009	Male	41.4%	41.8%	15.0%	0.7%	1.1%
		Female	54.1%	33.1%	9.8%	1.8%	1.2%

			How often do you get the social and emotional support you need?				
			Always	Usually	Sometimes	Rarely	Never
Employment Status	1999	Employed	38.7%	41.1%	14.7%	3.6%	1.9%
		Not Employed	52.3%	31.7%	11.7%	2.5%	1.8%
	2005	Employed	49.7%	35.6%	11.3%	2.3%	1.0%
		Not Employed	50.2%	24.9%	16.8%	3.5%	4.6%
	2007	Employed	44.9%	43.6%	9.1%	1.3%	1.1%
		Not Employed	51.9%	29.5%	12.4%	3.8%	2.4%
	2009	Employed	44.4%	39.4%	13.7%	1.0%	1.6%
		Not Employed	52.5%	34.7%	10.6%	1.7%	0.7%

			How often do you get the social and emotional support you need?				
			Always	Usually	Sometimes	Rarely	Never
Income Level	1999	< \$15K	48.1%	29.2%	13.6%	6.5%	2.6%
		\$15-25K	41.3%	39.1%	15.2%	2.2%	2.2%
		\$25-50K	39.2%	39.2%	15.8%	4.1%	1.8%
		\$50K +	46.7%	42.5%	8.3%	2.5%	0.0%
	2005	< \$15K	39.4%	23.9%	21.1%	7.0%	8.5%
		\$15-25K	43.1%	32.8%	16.4%	2.6%	5.2%
		\$25-50K	48.1%	38.5%	11.8%	1.1%	0.5%
		\$50K +	56.5%	30.1%	10.8%	2.7%	0.0%
	2007	< \$15K	38.6%	35.7%	14.3%	7.1%	4.3%
		\$15-25K	43.3%	37.3%	17.9%	1.5%	0.0%
		\$25-50K	40.2%	46.4%	9.4%	2.7%	1.3%
		\$50K +	56.7%	39.4%	2.5%	0.5%	1.0%
	2009	< \$15K	37.5%	37.5%	12.5%	6.3%	6.3%
		\$15-25K	44.3%	41.0%	11.5%	1.6%	1.6%
		\$25-50K	55.7%	33.6%	9.4%	0.7%	0.7%
		\$50K +	67.9%	27.4%	3.6%	0.0%	1.2%

			How often do you get the social and emotional support you need?				
			Always	Usually	Sometimes	Rarely	Never
Age	1999	18 - 24	58.2%	25.4%	11.9%	4.5%	0.0%
		25 - 34	37.6%	42.2%	16.5%	0.9%	2.8%
		35 - 44	32.6%	38.3%	20.6%	5.7%	2.8%
		45 - 54	31.7%	44.2%	17.5%	5.0%	1.7%
		55 - 64	48.5%	41.4%	5.1%	3.0%	2.0%
		65+	56.8%	30.7%	9.1%	2.3%	1.1%
	2005	18 - 24	55.0%	25.0%	12.5%	5.0%	2.5%
		25 - 34	50.5%	34.1%	11.0%	3.3%	1.1%
		35 - 44	45.0%	35.7%	15.5%	2.3%	1.6%
		45 - 54	47.0%	32.5%	13.7%	1.7%	5.1%
		55 - 64	44.9%	32.7%	13.3%	6.1%	3.1%
		65+	56.0%	26.4%	14.0%	1.6%	2.1%
	2007	18 - 24	50.0%	41.2%	5.9%	2.9%	0.0%
		25 - 34	44.3%	42.6%	12.2%	0.0%	0.9%
		35 - 44	47.6%	37.3%	9.5%	3.2%	2.4%
		45 - 54	41.7%	43.8%	11.8%	2.1%	0.7%
		55 - 64	45.1%	43.6%	7.5%	2.3%	1.5%
		65+	55.5%	26.1%	11.8%	4.2%	2.5%
	2009	18 - 24	39.2%	45.9%	13.5%	0.0%	1.4%
		25 - 34	49.5%	34.3%	14.1%	0.0%	2.0%
		35 - 44	39.6%	37.5%	16.7%	4.2%	2.1%
45 - 54		44.7%	39.4%	13.8%	1.1%	1.1%	
55 - 64		48.9%	34.4%	13.3%	2.2%	1.1%	
65+		58.3%	35.0%	6.1%	0.6%	0.0%	

			How often do you get the social and emotional support you need?				
			Always	Usually	Sometimes	Rarely	Never
Education Level	1999	Less than High School	45.1%	28.0%	15.9%	6.1%	4.9%
		High School Diploma or GED	45.2%	35.3%	13.8%	3.2%	2.5%
		Some College/Technical	43.1%	39.0%	13.3%	3.7%	0.9%
		College Degree or Higher	41.2%	44.3%	12.2%	2.3%	0.0%
	2005	Less than High School	46.3%	24.1%	14.8%	5.6%	9.3%
		High School Diploma or GED	50.8%	30.2%	12.5%	4.0%	2.4%
		Some College/Technical	46.4%	30.7%	18.4%	1.7%	2.8%
		College Degree or Higher	53.4%	34.6%	10.5%	1.6%	0.0%
	2007	Less than High School	42.9%	20.4%	18.4%	12.2%	6.1%
		High School Diploma or GED	45.2%	37.2%	14.0%	2.0%	1.6%
		Some College/Technical	47.3%	42.8%	6.8%	1.8%	1.4%
		College Degree or Higher	49.7%	43.0%	6.7%	0.7%	0.0%
	2009	Less than High School	53.5%	23.3%	16.3%	7.0%	0.0%
		High School Diploma or GED	35.9%	44.7%	16.0%	1.1%	2.3%
		Some College/Technical	54.7%	34.2%	9.5%	1.1%	0.5%
		College Degree or Higher	63.9%	29.5%	6.6%	0.0%	0.0%