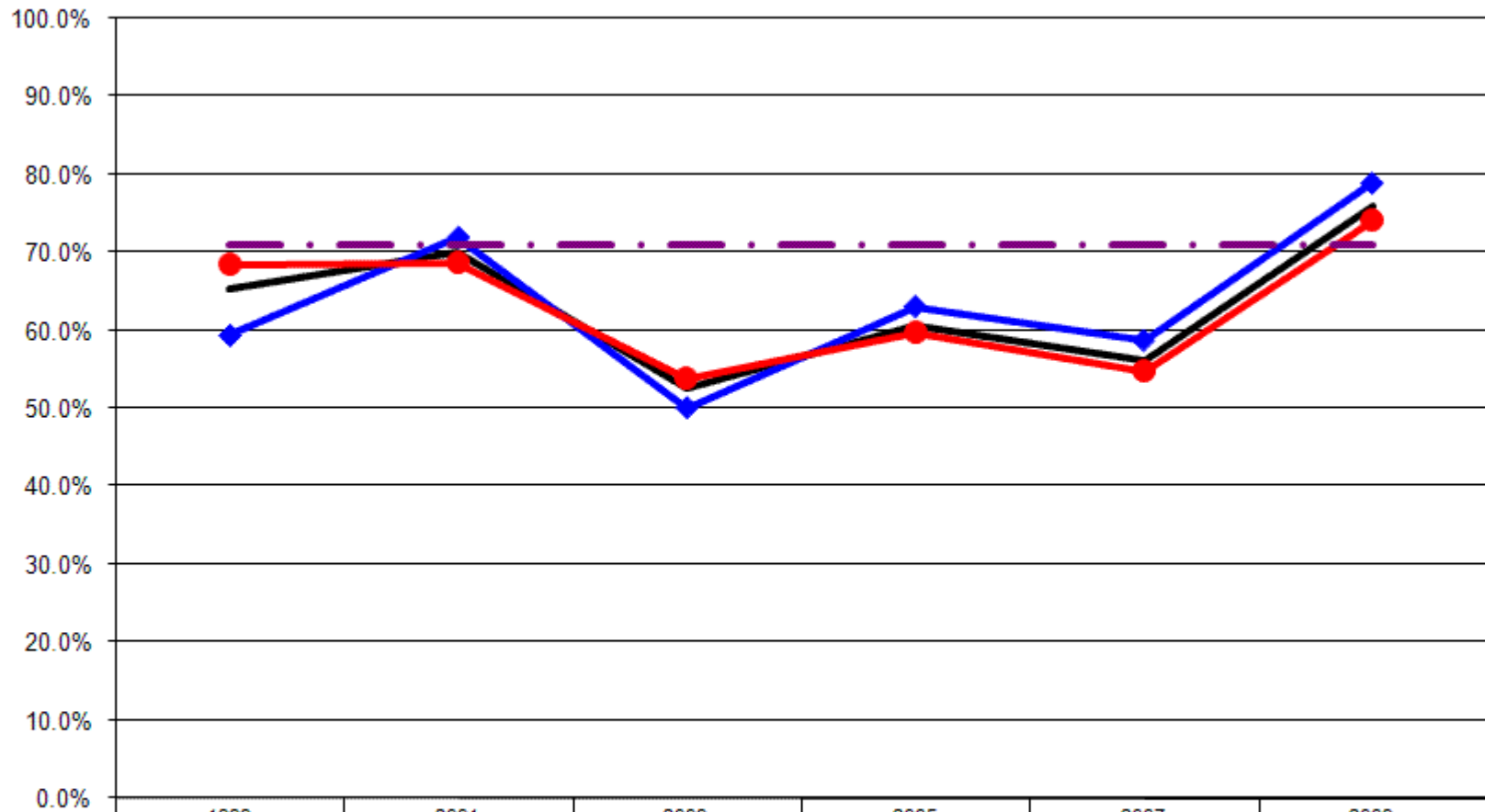


12 Year Review Adults 65+ who had flu shot within the past year

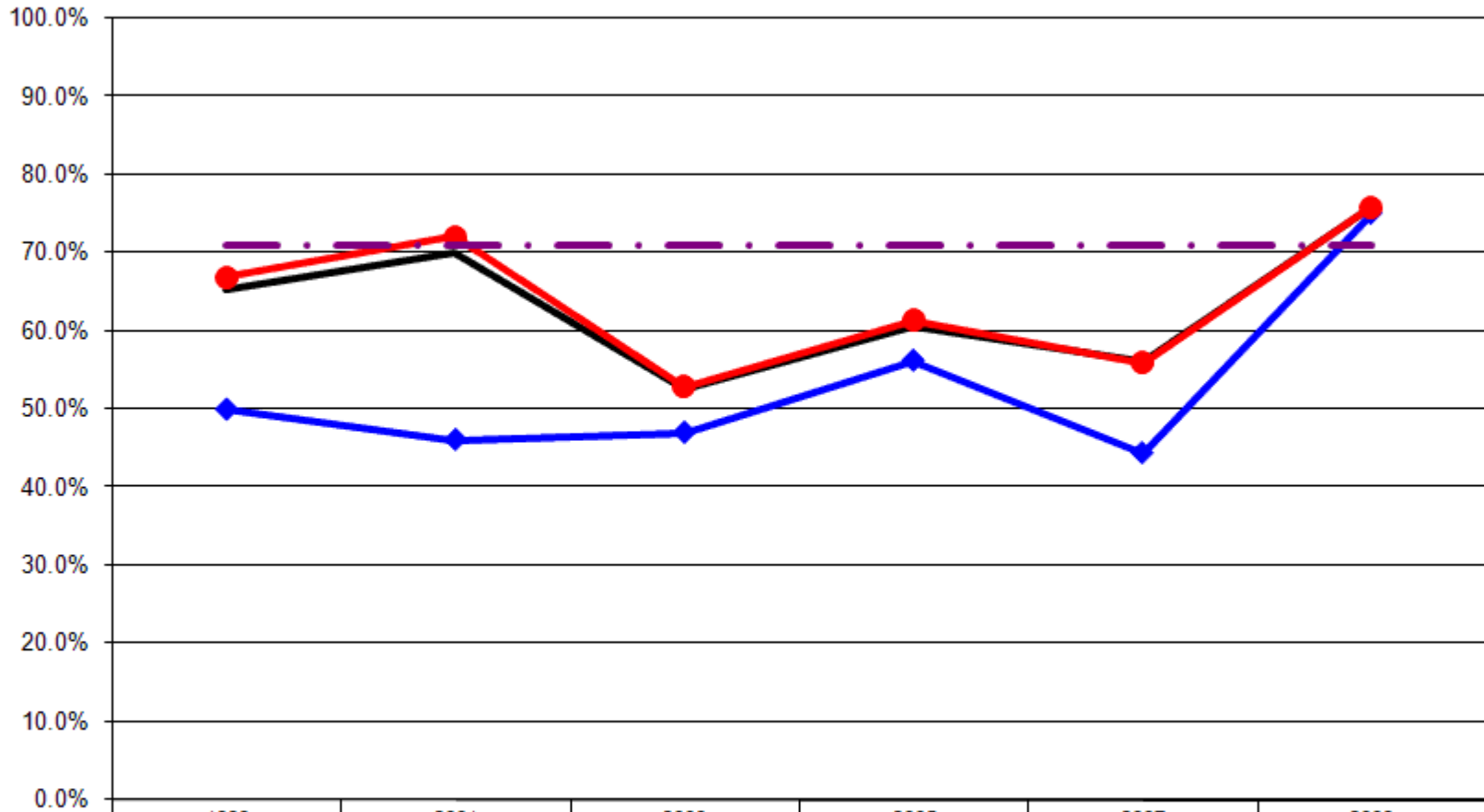
Adults 65+ Who Had Flu Shot in Past Year By Gender



	1999	2001	2003	2005	2007	2009
— Total	65.3%	70.0%	52.6%	60.7%	56.2%	75.9%
—◆ Male	59.3%	72.0%	50.0%	63.1%	58.7%	79.0%
—● Female	68.4%	68.7%	53.8%	59.7%	54.8%	74.1%
- - - US Total Rate*						70.9%

*Source: 2008 CDC BRFSS

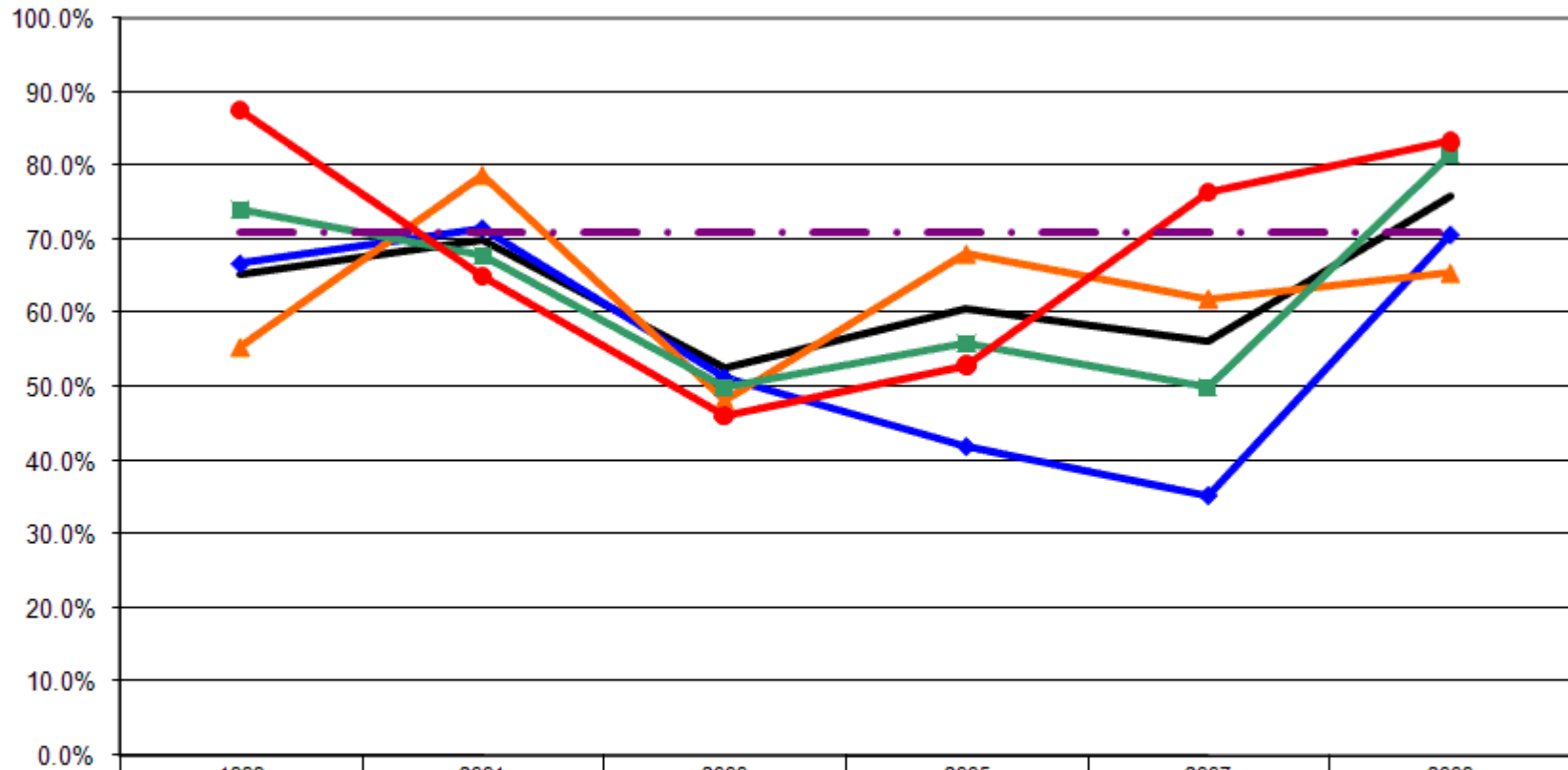
Adults 65+ Who Had Flu Shot in Past Year By Employment Status



	1999	2001	2003	2005	2007	2009
— Total	65.3%	70.0%	52.6%	60.7%	56.2%	75.9%
—◆— Employed	50.0%	46.2%	47.1%	56.3%	44.4%	75.0%
—●— Not Employed	66.9%	72.2%	52.9%	61.3%	56.0%	75.9%
- - - US Total Rate*						70.9%

*Source: 2008 CDC BRFSS

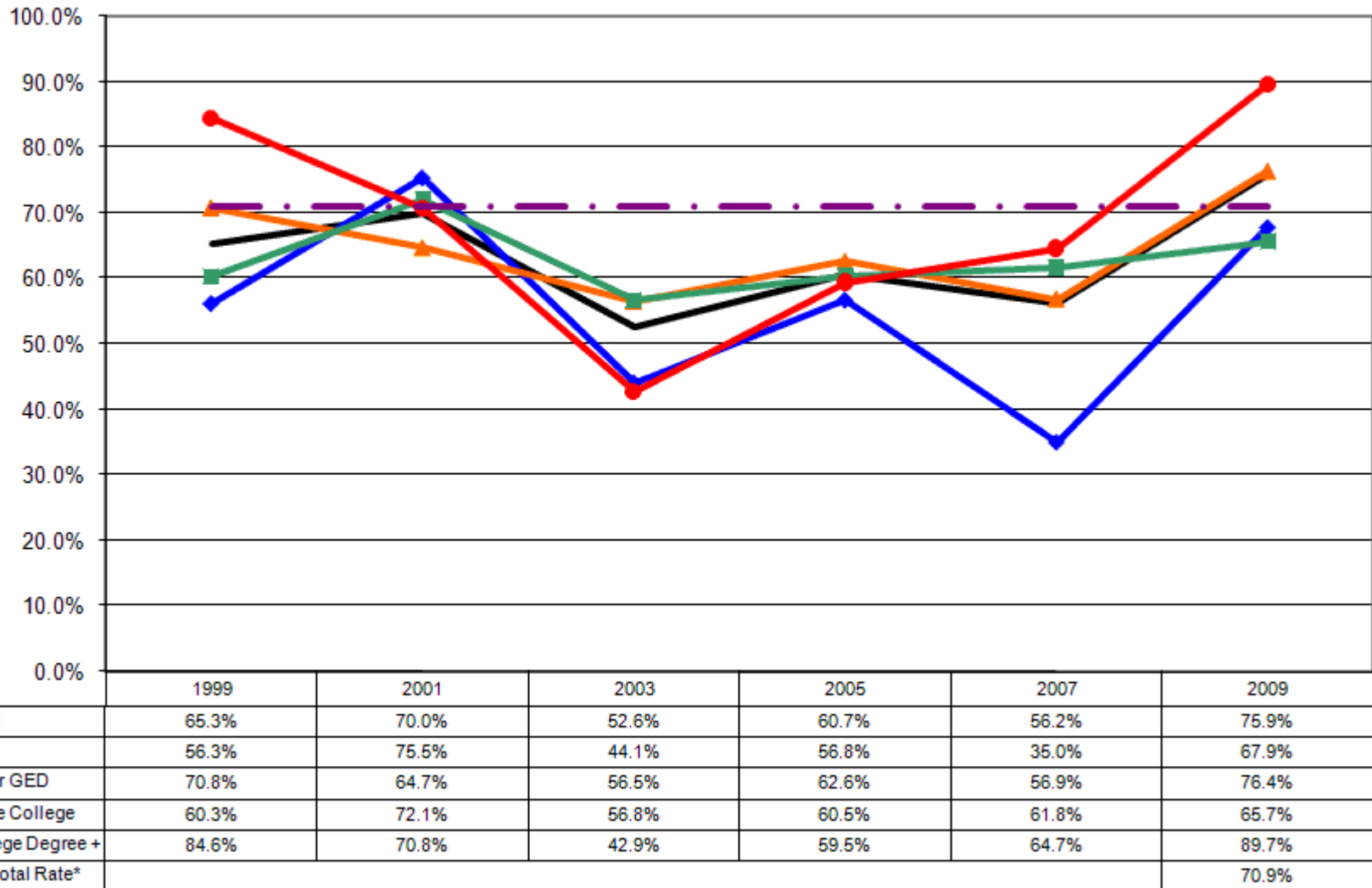
Adults 65+ Who Had Flu Shot in Past Year By Income



	1999	2001	2003	2005	2007	2009
— Total	65.3%	70.0%	52.6%	60.7%	56.2%	75.9%
—◆— <\$15K	66.7%	71.4%	51.3%	41.9%	35.3%	70.6%
—▲— \$15-25K	55.3%	78.7%	48.1%	68.0%	61.9%	65.4%
—■— \$25-50K	74.1%	67.9%	50.0%	55.9%	50.0%	81.5%
—●— \$50K+	87.5%	65.0%	46.2%	52.9%	76.5%	83.3%
-.-.- US Total Rate*						70.9%

*Source: 2008 CDC BRFSS

Adults 65+ Who Had Flu Shot in Past Year By Education



*Source: 2008 CDC BRFSS

Interview Year 1999

		During the past 12 months, have you had a flu shot?	
		Yes	No
Total		65.3%	34.7%
Gender	Male	59.3%	40.7%
	Female	68.4%	31.6%
Age	65+	65.3%	34.7%
Employed	Yes	50.0%	50.0%
	No	66.9%	33.1%
Income	< \$15K	66.7%	33.3%
	\$15-25K	55.3%	44.7%
	\$25-50K	74.1%	25.9%
	\$50K +	87.5%	12.5%
Education	Less than High School	56.3%	43.8%
	High School Diploma or GED	70.8%	29.2%
	Some College/Technical	60.3%	39.7%
	College Degree or Higher	84.6%	15.4%

Interview Year 2001

		During the past 12 months, have you had a flu shot?	
		Yes	No
Total		70.0%	30.0%
Gender	Male	72.0%	28.0%
	Female	68.7%	31.3%
Age	65+	70.0%	30.0%
Employed	Yes	46.2%	53.8%
	No	72.2%	27.8%
Income	< \$15K	71.4%	28.6%
	\$15-25K	78.7%	21.3%
	\$25-50K	67.9%	32.1%
	\$50K +	65.0%	35.0%
Education	Less than High School	75.5%	24.5%
	High School Diploma or GED	64.7%	35.3%
	Some College/Technical	72.1%	27.9%
	College Degree or Higher	70.8%	29.2%

Interview Year 2003

		During the past 12 months, have you had a flu shot?	
		Yes	No
Total		52.6%	47.4%
Gender	Male	50.0%	50.0%
	Female	53.8%	46.2%
Age	65+	52.6%	47.4%
Employed	Yes	47.1%	52.9%
	No	52.9%	47.1%
Income	< \$15K	51.3%	48.7%
	\$15-25K	48.1%	51.9%
	\$25-50K	50.0%	50.0%
	\$50K +	46.2%	53.8%
Education	Less than High School	44.1%	55.9%
	High School Diploma or GED	56.5%	43.5%
	Some College/Technical	56.8%	43.2%
	College Degree or Higher	42.9%	57.1%

Interview Year 2005

		During the past 12 months, have you had a flu shot?	
		Yes	No
Total		60.7%	39.3%
Gender	Male	63.1%	36.9%
	Female	59.7%	40.3%
Age	65+	60.7%	39.3%
Employed	Yes	56.3%	43.8%
	No	61.3%	38.7%
Income	< \$15K	41.9%	58.1%
	\$15-25K	68.0%	32.0%
	\$25-50K	55.9%	44.1%
	\$50K +	52.9%	47.1%
Education	Less than High School	56.8%	43.2%
	High School Diploma or GED	62.6%	37.4%
	Some College/Technical	60.5%	39.5%
	College Degree or Higher	59.5%	40.5%

Interview Year 2007

		During the past 12 months, have you had a flu shot?	
		Yes	No
Total		56.2%	43.8%
Gender	Male	58.7%	41.3%
	Female	54.8%	45.2%
Age	65+	56.2%	43.8%
Employed	Yes	44.4%	55.6%
	No	56.0%	44.0%
Income	< \$15K	35.3%	64.7%
	\$15-25K	61.9%	38.1%
	\$25-50K	50.0%	50.0%
	\$50K +	76.5%	23.5%
Education	Less than High School	35.0%	65.0%
	High School Diploma or GED	56.9%	43.1%
	Some College/Technical	61.8%	38.2%
	College Degree or Higher	64.7%	35.3%

Interview Year 2009

		During the past 12 months, have you had a flu shot?	
		Yes	No
Total		75.9%	24.1%
Gender	Male	79.0%	21.0%
	Female	74.1%	25.9%
Age	65+	75.9%	24.1%
Employed	Yes	75.0%	25.0%
	No	75.9%	24.1%
Income	< \$15K	70.6%	29.4%
	\$15-25K	65.4%	34.6%
	\$25-50K	81.5%	18.5%
	\$50K +	83.3%	16.7%
Education	Less than High School	67.9%	32.1%
	High School Diploma or GED	76.4%	23.6%
	Some College/Technical	65.7%	34.3%
	College Degree or Higher	89.7%	10.3%

During the past 12 months, have you had a flu shot?

			Yes	No
Gender	1999	Male	59.3%	40.7%
		Female	68.4%	31.6%
	2001	Male	72.0%	28.0%
		Female	68.7%	31.3%
	2003	Male	50.0%	50.0%
		Female	53.8%	46.2%
	2005	Male	63.1%	36.9%
		Female	59.7%	40.3%
	2007	Male	58.7%	41.3%
		Female	54.8%	45.2%
	2009	Male	79.0%	21.0%
		Female	74.1%	25.9%

During the past 12 months, have you had a flu shot?

			Yes	No
Employment Status	1999	Employed	50.0%	50.0%
		Not Employed	66.9%	33.1%
	2001	Employed	46.2%	53.8%
		Not Employed	72.2%	27.8%
	2003	Employed	47.1%	52.9%
		Not Employed	52.9%	47.1%
	2005	Employed	56.3%	43.8%
		Not Employed	61.3%	38.7%
	2007	Employed	44.4%	55.6%
		Not Employed	56.0%	44.0%
	2009	Employed	75.0%	25.0%
		Not Employed	75.9%	24.1%

During the past 12 months, have you had a flu shot?

			Yes	No
Income Level	1999	< \$15K	66.7%	33.3%
		\$15-25K	55.3%	44.7%
		\$25-50K	74.1%	25.9%
		\$50K +	87.5%	12.5%
	2001	< \$15K	71.4%	28.6%
		\$15-25K	78.7%	21.3%
		\$25-50K	67.9%	32.1%
		\$50K +	65.0%	35.0%
	2003	< \$15K	51.3%	48.7%
		\$15-25K	48.1%	51.9%
		\$25-50K	50.0%	50.0%
		\$50K +	46.2%	53.8%
	2005	< \$15K	41.9%	58.1%
		\$15-25K	68.0%	32.0%
		\$25-50K	55.9%	44.1%
		\$50K +	52.9%	47.1%
	2007	< \$15K	35.3%	64.7%
		\$15-25K	61.9%	38.1%
		\$25-50K	50.0%	50.0%
		\$50K +	76.5%	23.5%
2009	< \$15K	70.6%	29.4%	
	\$15-25K	65.4%	34.6%	
	\$25-50K	81.5%	18.5%	
	\$50K +	83.3%	16.7%	

During the past 12 months, have you had a flu shot?

			Yes	No
Education Level	1999	Less than High School	56.3%	43.8%
		High School Diploma or GED	70.8%	29.2%
		Some College/Technical	60.3%	39.7%
		College Degree or Higher	84.6%	15.4%
	2001	Less than High School	75.5%	24.5%
		High School Diploma or GED	64.7%	35.3%
		Some College/Technical	72.1%	27.9%
		College Degree or Higher	70.8%	29.2%
	2003	Less than High School	44.1%	55.9%
		High School Diploma or GED	56.5%	43.5%
		Some College/Technical	56.8%	43.2%
		College Degree or Higher	42.9%	57.1%
	2005	Less than High School	56.8%	43.2%
		High School Diploma or GED	62.6%	37.4%
		Some College/Technical	60.5%	39.5%
		College Degree or Higher	59.5%	40.5%
2007	Less than High School	35.0%	65.0%	
	High School Diploma or GED	56.9%	43.1%	
	Some College/Technical	61.8%	38.2%	
	College Degree or Higher	64.7%	35.3%	
2009	Less than High School	67.9%	32.1%	
	High School Diploma or GED	76.4%	23.6%	
	Some College/Technical	65.7%	34.3%	
	College Degree or Higher	89.7%	10.3%	