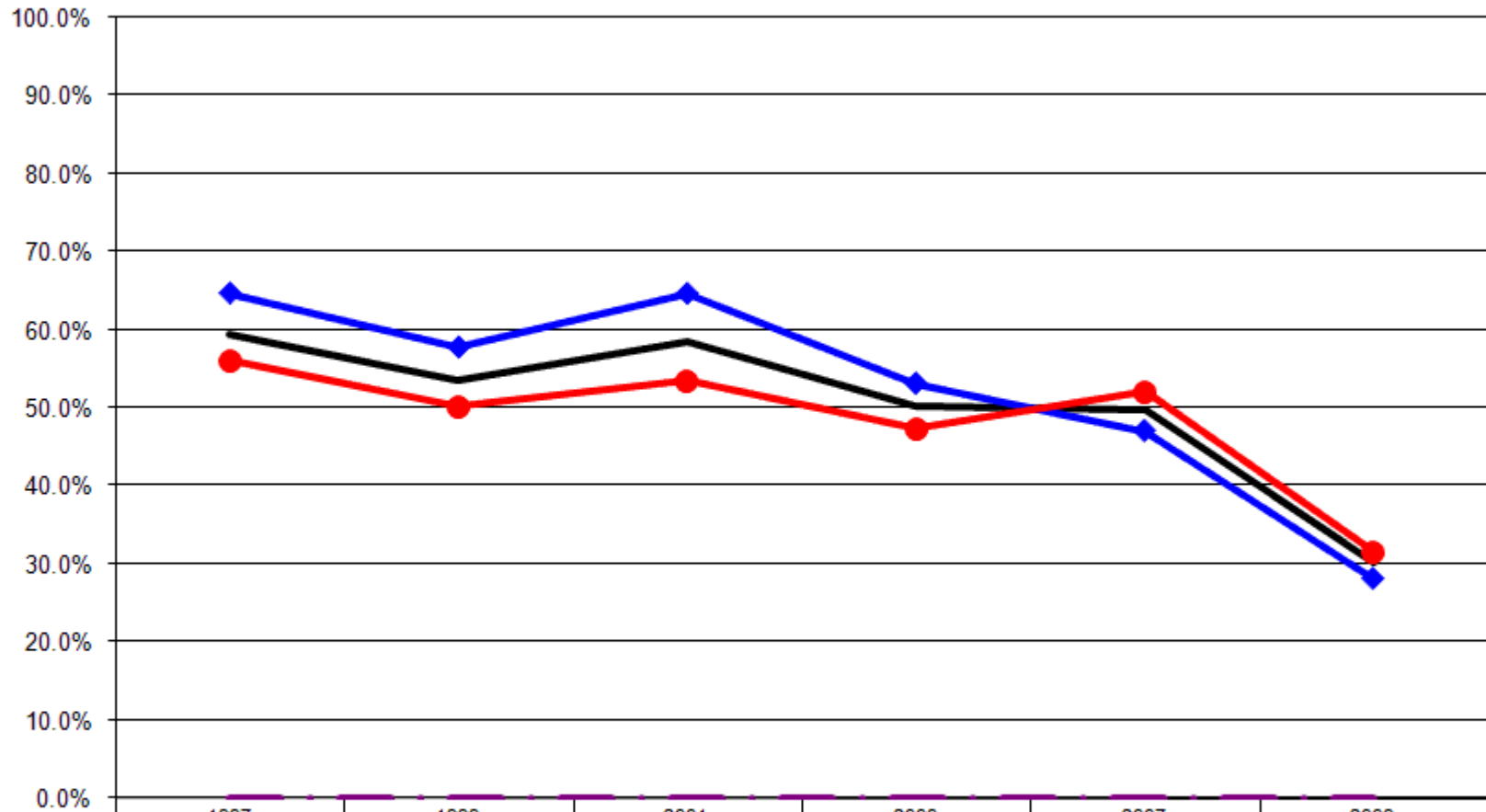


12 Year Review

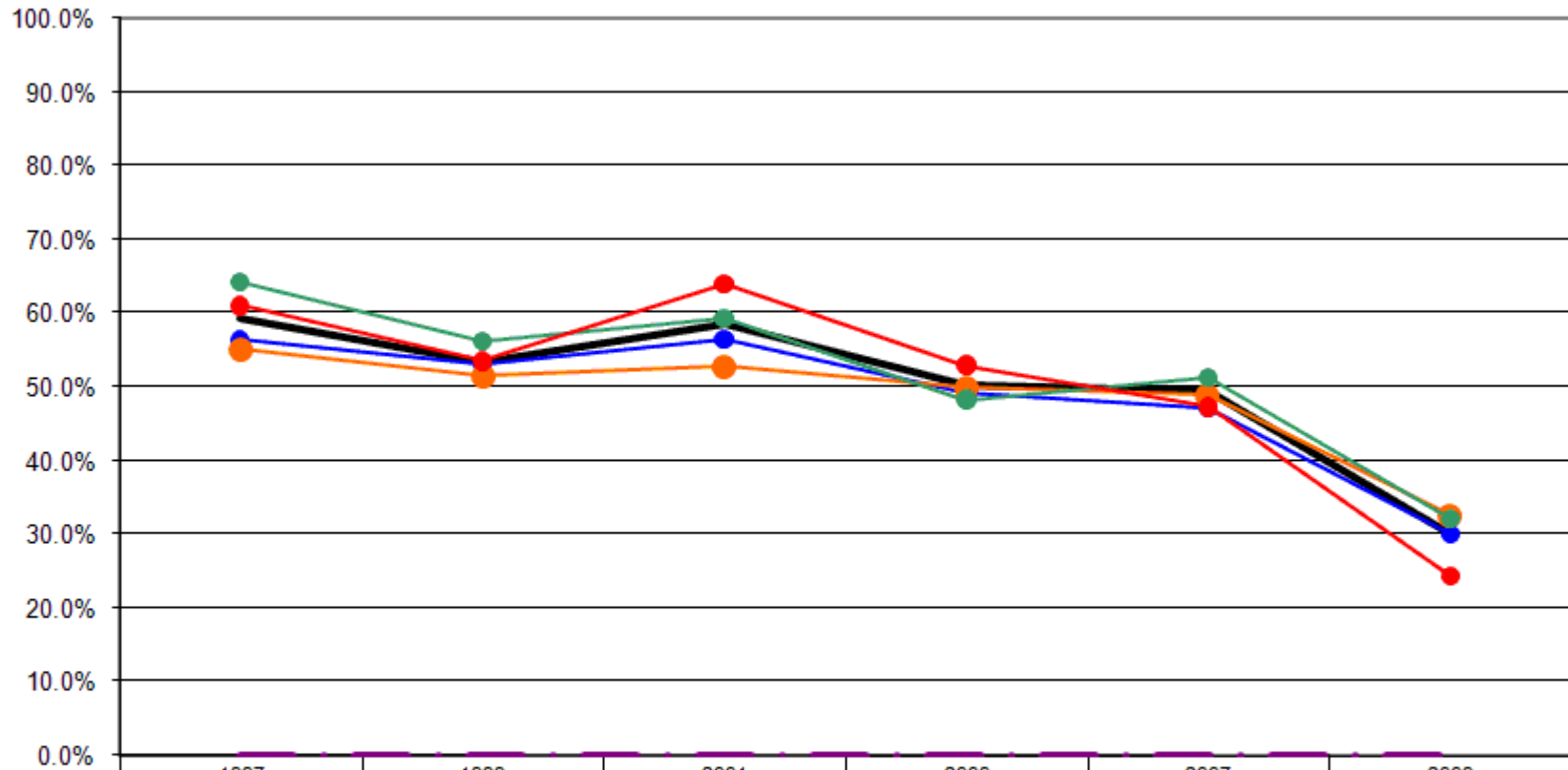
During the past 30 days, for about how many days have you felt very healthy and full of energy?

Felt Very Healthy & Full of Energy 15+ Days By Gender



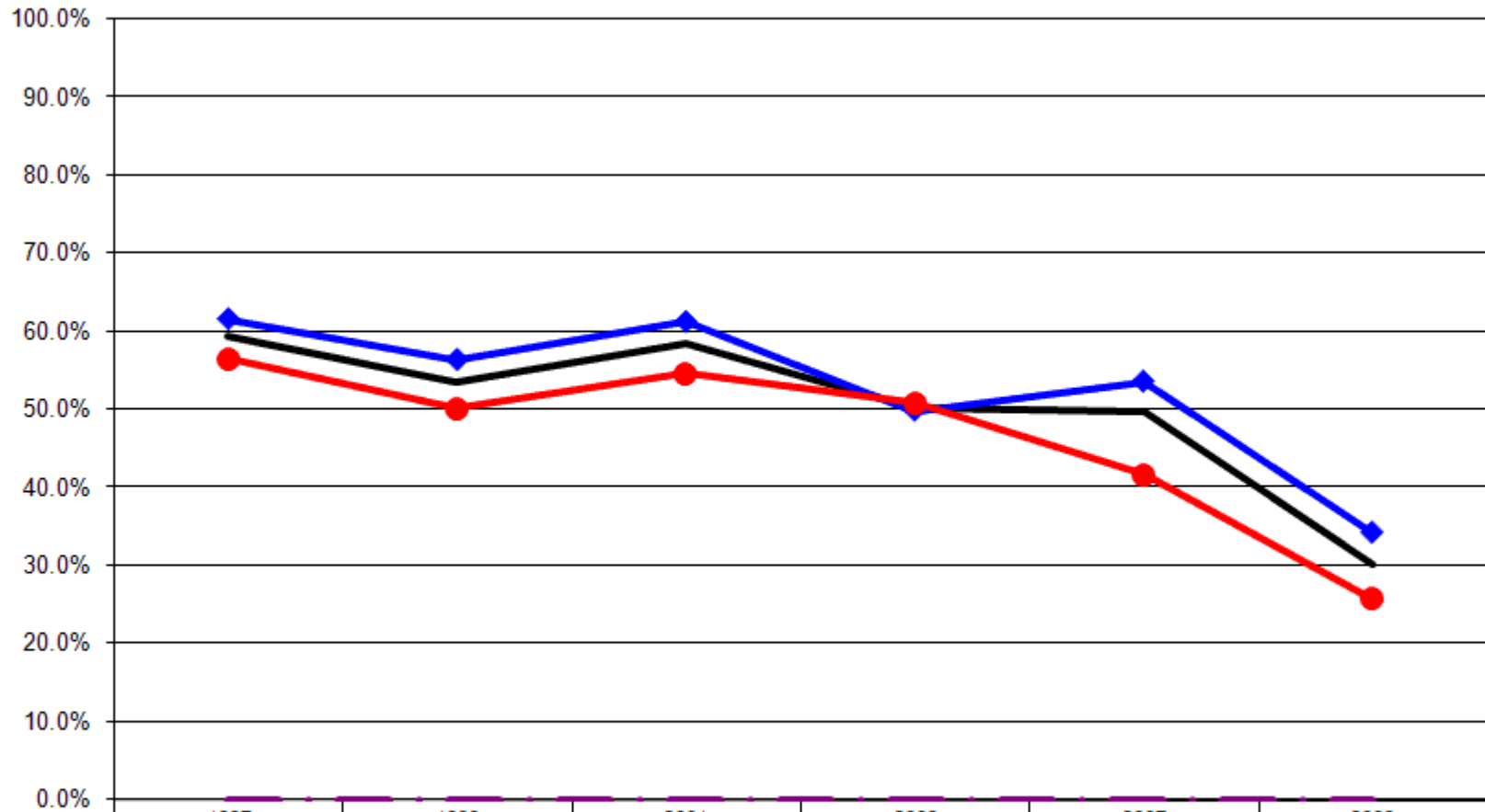
	1997	1999	2001	2003	2007	2009
— Total	59.4%	53.5%	58.5%	50.2%	49.6%	30.1%
—◆— Male	64.7%	57.8%	64.6%	53.1%	47.1%	28.1%
—●— Female	56.1%	50.3%	53.4%	47.4%	52.1%	31.6%
- - - US Total Rate*	0.0%	0.0%	0.0%	0.0%	0.0%	0.0%

Felt Very Healthy & Full of Energy 15+ Days By Age



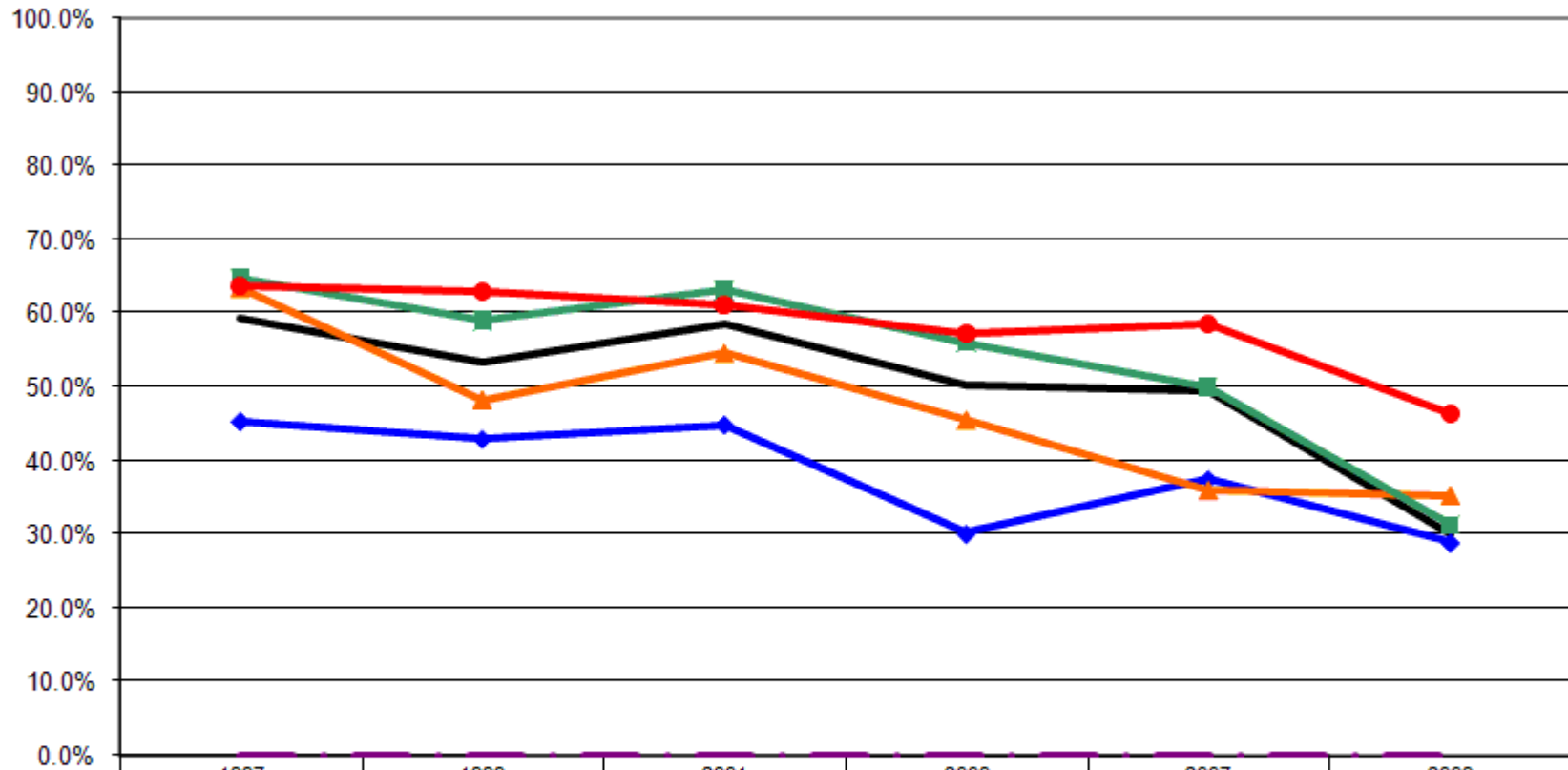
	1997	1999	2001	2003	2007	2009
— Total	59.4%	53.5%	58.5%	50.2%	49.6%	30.1%
—● 18-24	56.3%	53.0%	56.4%	49.2%	47.1%	30.0%
—● 25-44	55.2%	51.6%	52.9%	50.0%	49.0%	32.6%
—● 45-64	64.2%	56.2%	59.3%	48.3%	51.3%	32.2%
—● 65+	61.1%	53.6%	64.1%	53.0%	47.4%	24.4%
- - - US Total Rate*						

Felt Very Healthy & Full of Energy 15+ Days By Employment Status



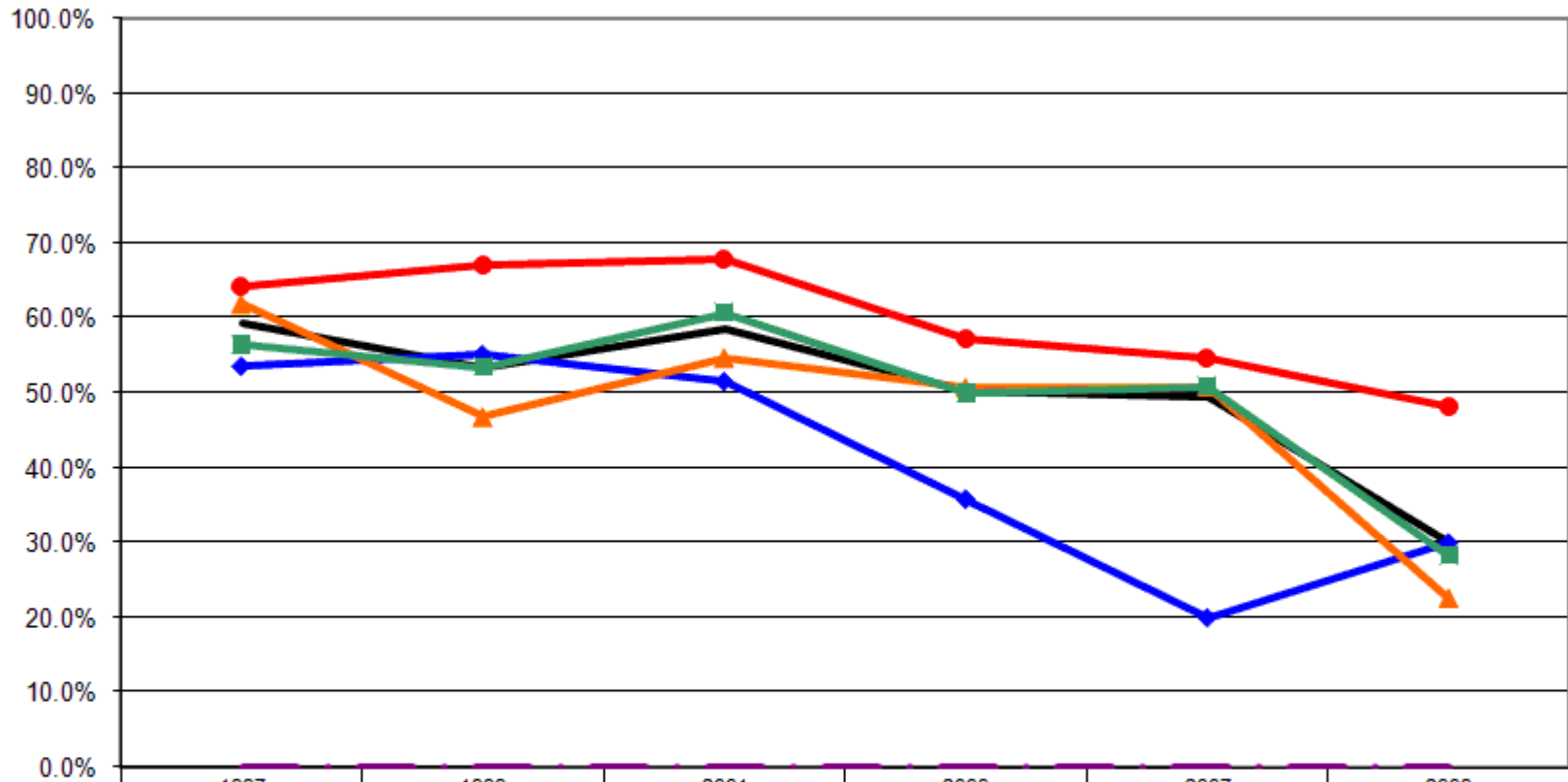
	1997	1999	2001	2003	2007	2009
— Total	59.4%	53.5%	58.5%	50.2%	49.6%	30.1%
—◆— Employed	61.6%	56.3%	61.2%	49.9%	53.6%	34.2%
—●— Not Employed	56.6%	50.2%	54.7%	50.9%	41.7%	25.8%
- - - - US Total Rate*	0.0%	0.0%	0.0%	0.0%	0.0%	0.0%

Felt Very Healthy & Full of Energy 15+ Days By Income



	1997	1999	2001	2003	2007	2009
Total	59.4%	53.5%	58.5%	50.2%	49.6%	30.1%
<\$15K	45.3%	43.0%	44.9%	30.1%	37.5%	28.9%
\$15-25K	63.4%	48.2%	54.5%	45.5%	35.9%	35.2%
\$25-50K	64.8%	59.0%	63.1%	56.0%	50.0%	31.3%
\$50K+	63.7%	63.0%	61.2%	57.1%	58.6%	46.3%
US Total Rate*	0.0%	0.0%	0.0%	0.0%	0.0%	0.0%

Felt Very Healthy & Full of Energy 15+ Days By Education



	1997	1999	2001	2003	2007	2009
— Total	59.4%	53.5%	58.5%	50.2%	49.6%	30.1%
—◆— <HS	53.6%	55.1%	51.5%	35.8%	20.0%	30.0%
—▲— HS or GED	61.8%	46.7%	54.6%	50.6%	50.8%	22.6%
—■— Some College	56.4%	53.5%	60.7%	50.0%	50.9%	28.3%
—●— College Degree +	64.2%	67.2%	67.9%	57.4%	54.7%	48.3%
- - - US Total Rate*						

Interview Year 1997

		During the past 30 days, for about how many days have you felt very healthy and full of energy?					
		None	1 to 3 days	4 to 6 days	7 to 10 days	11 to 15 days	More than 15 days
Total		11.5%	4.5%	6.8%	7.1%	10.7%	59.4%
Gender	Male	8.7%	3.2%	7.9%	6.3%	9.1%	64.7%
	Female	13.2%	5.3%	6.1%	7.6%	11.7%	56.1%
Age	18 - 24	2.1%	8.3%	8.3%	12.5%	12.5%	56.3%
	25 - 34	10.9%	7.0%	4.7%	9.4%	13.3%	54.7%
	35 - 44	10.5%	3.0%	8.3%	12.0%	10.5%	55.6%
	45 - 54	10.5%	6.3%	6.3%	5.3%	12.6%	58.9%
	55 - 64	13.6%	2.5%	1.2%	3.7%	8.6%	70.4%
	65+	15.3%	2.5%	10.2%	2.5%	8.3%	61.1%
Employed	Yes	6.7%	4.8%	5.6%	8.1%	13.2%	61.6%
	No	17.9%	4.0%	8.4%	5.8%	7.3%	56.6%
Income	< \$15K	20.5%	5.0%	8.7%	7.5%	13.0%	45.3%
	\$15-25K	12.2%	4.1%	4.9%	6.5%	8.9%	63.4%
	\$25-50K	7.8%	4.7%	4.7%	8.8%	9.3%	64.8%
	\$50K +	2.9%	4.9%	8.8%	4.9%	14.7%	63.7%
Education	Less than High School	12.5%	7.1%	9.8%	9.8%	7.1%	53.6%
	High School Diploma or GED	15.9%	4.5%	4.9%	5.7%	7.3%	61.8%
	Some College/Technical	10.4%	2.5%	8.0%	8.0%	14.7%	56.4%
	College Degree or Higher	3.3%	4.9%	5.7%	6.5%	15.4%	64.2%

Interview Year 1999

		During the past 30 days, for about how many days have you felt very healthy and full of energy?					
		None	1 to 3 days	4 to 6 days	7 to 10 days	11 to 15 days	More than 15 days
Total		11.4%	6.4%	5.6%	8.0%	15.0%	53.5%
Gender	Male	11.2%	5.3%	3.6%	7.3%	14.9%	57.8%
	Female	11.6%	7.3%	7.1%	8.6%	15.2%	50.3%
Age	18 - 24	6.1%	.0%	9.1%	15.2%	16.7%	53.0%
	25 - 34	3.7%	5.6%	6.5%	8.3%	23.1%	52.8%
	35 - 44	10.7%	7.9%	2.9%	11.4%	16.4%	50.7%
	45 - 54	12.8%	7.7%	6.0%	5.1%	13.7%	54.7%
	55 - 64	7.1%	9.1%	7.1%	4.0%	12.1%	60.6%
	65+	20.5%	6.0%	4.8%	6.6%	10.2%	51.8%
Employed	Yes	7.6%	5.6%	5.9%	8.3%	16.3%	56.3%
	No	18.1%	7.7%	4.8%	7.4%	11.8%	50.2%
Income	< \$15K	17.4%	13.4%	6.0%	8.1%	12.1%	43.0%
	\$15-25K	12.9%	6.5%	7.2%	7.2%	18.0%	48.2%
	\$25-50K	9.2%	1.4%	6.0%	8.3%	16.1%	59.0%
	\$50K +	6.7%	5.0%	3.4%	8.4%	13.4%	63.0%
Education	Less than High School	12.8%	12.8%	3.8%	3.8%	11.5%	55.1%
	High School Diploma or GED	13.8%	6.2%	8.7%	8.0%	16.7%	46.7%
	Some College/Technical	12.7%	3.8%	4.2%	8.9%	16.9%	53.5%
	College Degree or Higher	3.1%	7.6%	2.3%	9.2%	10.7%	67.2%

Interview Year 2001

		During the past 30 days, for about how many days have you felt very healthy and full of energy?					
		None	1 to 3 days	4 to 6 days	7 to 10 days	11 to 15 days	More than 15 days
Total		12.1%	3.7%	5.2%	8.5%	12.1%	58.5%
Gender	Male	9.2%	3.2%	4.1%	7.0%	11.8%	64.6%
	Female	14.4%	4.2%	6.0%	9.7%	12.3%	53.4%
Age	18 - 24	5.5%	5.5%	.0%	14.5%	18.2%	56.4%
	25 - 34	4.0%	7.9%	7.9%	7.9%	18.8%	53.5%
	35 - 44	11.5%	2.2%	7.9%	14.4%	11.5%	52.5%
	45 - 54	11.3%	3.0%	6.8%	9.0%	14.3%	55.6%
	55 - 64	16.1%	2.2%	4.3%	2.2%	10.8%	64.5%
	65+	18.6%	3.6%	2.4%	5.4%	6.0%	64.1%
Employed	Yes	6.0%	3.5%	5.8%	8.8%	14.6%	61.2%
	No	20.1%	4.0%	4.4%	8.1%	8.7%	54.7%
Income	< \$15K	25.5%	4.1%	5.1%	9.2%	11.2%	44.9%
	\$15-25K	14.0%	5.8%	5.0%	13.2%	7.4%	54.5%
	\$25-50K	9.1%	2.8%	4.8%	8.7%	11.5%	63.1%
	\$50K +	6.1%	2.0%	6.1%	7.5%	17.0%	61.2%
Education	Less than High School	19.6%	3.1%	3.1%	9.3%	13.4%	51.5%
	High School Diploma or GED	15.3%	4.6%	4.6%	9.2%	11.8%	54.6%
	Some College/Technical	8.7%	3.6%	7.1%	9.2%	10.7%	60.7%
	College Degree or Higher	5.0%	2.9%	5.0%	5.7%	13.6%	67.9%

Interview Year 2003

		During the past 30 days, for about how many days have you felt very healthy and full of energy?					
		None	1 to 3 days	4 to 6 days	7 to 10 days	11 to 15 days	More than 15 days
Total		18.5%	4.9%	5.1%	10.6%	10.8%	50.2%
Gender	Male	17.0%	6.6%	4.9%	7.6%	10.8%	53.1%
	Female	19.9%	3.3%	5.2%	13.4%	10.8%	47.4%
Age	18 - 24	11.1%	11.1%	4.8%	11.1%	12.7%	49.2%
	25 - 34	12.9%	3.0%	5.9%	9.9%	16.8%	51.5%
	35 - 44	12.4%	5.0%	3.3%	12.4%	18.2%	48.8%
	45 - 54	22.7%	7.2%	8.2%	13.4%	4.1%	44.3%
	55 - 64	25.3%	2.5%	5.1%	7.6%	6.3%	53.2%
	65+	25.0%	3.0%	3.8%	9.1%	6.1%	53.0%
Employed	Yes	12.8%	5.6%	5.6%	12.5%	13.6%	49.9%
	No	27.4%	3.9%	3.9%	7.4%	6.5%	50.9%
Income	< \$15K	34.4%	11.8%	3.2%	8.6%	11.8%	30.1%
	\$15-25K	21.6%	2.3%	6.8%	13.6%	10.2%	45.5%
	\$25-50K	14.3%	4.0%	2.9%	12.0%	10.9%	56.0%
	\$50K +	10.2%	2.7%	4.8%	11.6%	13.6%	57.1%
Education	Less than High School	40.3%	6.0%	6.0%	6.0%	6.0%	35.8%
	High School Diploma or GED	17.2%	5.2%	5.6%	10.3%	11.2%	50.6%
	Some College/Technical	20.1%	3.7%	6.1%	10.4%	9.8%	50.0%
	College Degree or Higher	7.0%	5.4%	2.3%	14.0%	14.0%	57.4%

Interview Year 2007

		During the past 30 days, for about how many days have you felt very healthy and full of energy?					
		None	1 to 3 days	4 to 6 days	7 to 10 days	11 to 15 days	More than 15 days
Total		14.3%	3.0%	5.4%	11.2%	16.4%	49.6%
Gender	Male	17.0%	3.1%	3.4%	11.1%	18.3%	47.1%
	Female	11.8%	2.9%	7.4%	11.2%	14.7%	52.1%
Age	18 - 24	5.9%	2.9%	2.9%	17.6%	23.5%	47.1%
	25 - 34	11.2%	6.9%	4.3%	12.1%	16.4%	49.1%
	35 - 44	9.8%	1.6%	7.3%	12.2%	20.3%	48.8%
	45 - 54	11.3%	2.1%	3.5%	13.5%	19.9%	49.6%
	55 - 64	17.2%	2.2%	5.2%	9.0%	13.4%	53.0%
	65+	25.4%	2.6%	7.9%	7.0%	9.6%	47.4%
Employed	Yes	8.9%	2.0%	4.0%	12.2%	19.3%	53.6%
	No	25.5%	4.9%	8.3%	8.8%	10.8%	41.7%
Income	< \$15K	25.0%	4.2%	6.9%	11.1%	15.3%	37.5%
	\$15-25K	23.4%	4.7%	4.7%	9.4%	21.9%	35.9%
	\$25-50K	10.8%	3.6%	6.3%	13.1%	16.2%	50.0%
	\$50K +	6.9%	1.5%	3.9%	10.8%	18.2%	58.6%
Education	Less than High School	44.4%	6.7%	2.2%	15.6%	11.1%	20.0%
	High School Diploma or GED	15.3%	1.6%	4.8%	11.7%	15.7%	50.8%
	Some College/Technical	11.8%	4.1%	6.8%	8.6%	17.7%	50.9%
	College Degree or Higher	7.4%	2.7%	5.4%	12.8%	16.9%	54.7%

Interview Year 2009

		During the past 30 days, for about how many days have you felt very healthy and full of energy?					
		None	1 to 3 days	4 to 6 days	7 to 10 days	11 to 15 days	More than 15 days
Total		28.9%	1.5%	9.5%	13.9%	16.1%	30.1%
Gender	Male	27.8%	3.0%	11.8%	13.7%	15.6%	28.1%
	Female	29.8%	0.3%	7.7%	14.1%	16.6%	31.6%
Age	18 - 24	12.9%	0.0%	11.4%	22.9%	22.9%	30.0%
	25 - 34	23.7%	0.0%	14.0%	12.9%	16.1%	33.3%
	35 - 44	20.9%	5.5%	7.7%	11.0%	23.1%	31.9%
	45 - 54	23.6%	2.2%	10.1%	13.5%	19.1%	31.5%
	55 - 64	36.4%	0.0%	5.7%	13.6%	11.4%	33.0%
	65+	42.3%	1.3%	9.0%	12.8%	10.3%	24.4%
Employed	Yes	19.5%	2.0%	9.4%	14.8%	20.1%	34.2%
	No	38.5%	1.0%	9.6%	13.1%	12.0%	25.8%
Income	< \$15K	33.3%	2.2%	8.9%	13.3%	13.3%	28.9%
	\$15-25K	46.3%	0.0%	3.7%	7.4%	7.4%	35.2%
	\$25-50K	24.3%	2.1%	7.6%	14.6%	20.1%	31.3%
	\$50K +	23.8%	2.5%	3.8%	8.8%	15.0%	46.3%
Education	Less than High School	55.0%	0.0%	0.0%	2.5%	12.5%	30.0%
	High School Diploma or GED	29.0%	2.8%	14.5%	17.3%	13.7%	22.6%
	Some College/Technical	28.3%	0.5%	8.7%	15.2%	19.0%	28.3%
	College Degree or Higher	20.7%	0.9%	3.4%	8.6%	18.1%	48.3%

			During the past 30 days, for about how many days have you felt very healthy and full of energy?					
			None	1 to 3 days	4 to 6 days	7 to 10 days	11 to 15 days	More than 15 days
Gender	1997	Male	8.7%	3.2%	7.9%	6.3%	9.1%	64.7%
		Female	13.2%	5.3%	6.1%	7.6%	11.7%	56.1%
	1999	Male	11.2%	5.3%	3.6%	7.3%	14.9%	57.8%
		Female	11.6%	7.3%	7.1%	8.6%	15.2%	50.3%
	2001	Male	9.2%	3.2%	4.1%	7.0%	11.8%	64.6%
		Female	14.4%	4.2%	6.0%	9.7%	12.3%	53.4%
	2003	Male	17.0%	6.6%	4.9%	7.6%	10.8%	53.1%
		Female	19.9%	3.3%	5.2%	13.4%	10.8%	47.4%
	2007	Male	17.0%	3.1%	3.4%	11.1%	18.3%	47.1%
		Female	11.8%	2.9%	7.4%	11.2%	14.7%	52.1%
	2009	Male	27.8%	3.0%	11.8%	13.7%	15.6%	28.1%
		Female	29.8%	0.3%	7.7%	14.1%	16.6%	31.6%

			During the past 30 days, for about how many days have you felt very healthy and full of energy?					
			None	1 to 3 days	4 to 6 days	7 to 10 days	11 to 15 days	More than 15 days
Income Level	1997	< \$15K	20.5%	5.0%	8.7%	7.5%	13.0%	45.3%
		\$15-25K	12.2%	4.1%	4.9%	6.5%	8.9%	63.4%
		\$25-50K	7.8%	4.7%	4.7%	8.8%	9.3%	64.8%
		\$50K +	2.9%	4.9%	8.8%	4.9%	14.7%	63.7%
	1999	< \$15K	17.4%	13.4%	6.0%	8.1%	12.1%	43.0%
		\$15-25K	12.9%	6.5%	7.2%	7.2%	18.0%	48.2%
		\$25-50K	9.2%	1.4%	6.0%	8.3%	16.1%	59.0%
		\$50K +	6.7%	5.0%	3.4%	8.4%	13.4%	63.0%
	2001	< \$15K	25.5%	4.1%	5.1%	9.2%	11.2%	44.9%
		\$15-25K	14.0%	5.8%	5.0%	13.2%	7.4%	54.5%
		\$25-50K	9.1%	2.8%	4.8%	8.7%	11.5%	63.1%
		\$50K +	6.1%	2.0%	6.1%	7.5%	17.0%	61.2%
	2003	< \$15K	34.4%	11.8%	3.2%	8.6%	11.8%	30.1%
		\$15-25K	21.6%	2.3%	6.8%	13.6%	10.2%	45.5%
		\$25-50K	14.3%	4.0%	2.9%	12.0%	10.9%	56.0%
		\$50K +	10.2%	2.7%	4.8%	11.6%	13.6%	57.1%
	2007	< \$15K	25.0%	4.2%	6.9%	11.1%	15.3%	37.5%
		\$15-25K	23.4%	4.7%	4.7%	9.4%	21.9%	35.9%
		\$25-50K	10.8%	3.6%	6.3%	13.1%	16.2%	50.0%
		\$50K +	6.9%	1.5%	3.9%	10.8%	18.2%	58.6%
2009	< \$15K	33.3%	2.2%	8.9%	13.3%	13.3%	28.9%	
	\$15-25K	46.3%	0.0%	3.7%	7.4%	7.4%	35.2%	
	\$25-50K	24.3%	2.1%	7.6%	14.6%	20.1%	31.3%	

\$50K + 23.8% 2.5% 3.8% 8.8% 15.0% 46.3%

During the past 30 days, for about how many days have you felt very healthy and full of energy?

			None	1 to 3 days	4 to 6 days	7 to 10 days	11 to 15 days	More than 15 days
Age	1997	18 - 24	2.1%	8.3%	8.3%	12.5%	12.5%	56.3%
		25 - 34	10.9%	7.0%	4.7%	9.4%	13.3%	54.7%
		35 - 44	10.5%	3.0%	8.3%	12.0%	10.5%	55.6%
		45 - 54	10.5%	6.3%	6.3%	5.3%	12.6%	58.9%
		55 - 64	13.6%	2.5%	1.2%	3.7%	8.6%	70.4%
		65+	15.3%	2.5%	10.2%	2.5%	8.3%	61.1%
	1999	18 - 24	6.1%	.0%	9.1%	15.2%	16.7%	53.0%
		25 - 34	3.7%	5.6%	6.5%	8.3%	23.1%	52.8%
		35 - 44	10.7%	7.9%	2.9%	11.4%	16.4%	50.7%
		45 - 54	12.8%	7.7%	6.0%	5.1%	13.7%	54.7%
		55 - 64	7.1%	9.1%	7.1%	4.0%	12.1%	60.6%
		65+	20.5%	6.0%	4.8%	6.6%	10.2%	51.8%
	2001	18 - 24	5.5%	5.5%	.0%	14.5%	18.2%	56.4%
		25 - 34	4.0%	7.9%	7.9%	7.9%	18.8%	53.5%
		35 - 44	11.5%	2.2%	7.9%	14.4%	11.5%	52.5%
		45 - 54	11.3%	3.0%	6.8%	9.0%	14.3%	55.6%
		55 - 64	16.1%	2.2%	4.3%	2.2%	10.8%	64.5%
		65+	18.6%	3.6%	2.4%	5.4%	6.0%	64.1%
	2003	18 - 24	11.1%	11.1%	4.8%	11.1%	12.7%	49.2%
		25 - 34	12.9%	3.0%	5.9%	9.9%	16.8%	51.5%
		35 - 44	12.4%	5.0%	3.3%	12.4%	18.2%	48.8%
		45 - 54	22.7%	7.2%	8.2%	13.4%	4.1%	44.3%
		55 - 64	25.3%	2.5%	5.1%	7.6%	6.3%	53.2%
		65+	25.0%	3.0%	3.8%	9.1%	6.1%	53.0%
	2007	18 - 24	5.9%	2.9%	2.9%	17.6%	23.5%	47.1%
		25 - 34	11.2%	6.9%	4.3%	12.1%	16.4%	49.1%
		35 - 44	9.8%	1.6%	7.3%	12.2%	20.3%	48.8%
		45 - 54	11.3%	2.1%	3.5%	13.5%	19.9%	49.6%
		55 - 64	17.2%	2.2%	5.2%	9.0%	13.4%	53.0%
		65+	25.4%	2.6%	7.9%	7.0%	9.6%	47.4%
2009	18 - 24	12.9%	0.0%	11.4%	22.9%	22.9%	30.0%	
	25 - 34	23.7%	0.0%	14.0%	12.9%	16.1%	33.3%	
	35 - 44	20.9%	5.5%	7.7%	11.0%	23.1%	31.9%	
	45 - 54	23.6%	2.2%	10.1%	13.5%	19.1%	31.5%	
	55 - 64	36.4%	0.0%	5.7%	13.6%	11.4%	33.0%	
	65+	42.3%	1.3%	9.0%	12.8%	10.3%	24.4%	

			During the past 30 days, for about how many days have you felt very healthy and full of energy?					
			None	1 to 3 days	4 to 6 days	7 to 10 days	11 to 15 days	More than 15 days
Employment Status	1997	Employed	6.7%	4.8%	5.6%	8.1%	13.2%	61.6%
		Not Employed	17.9%	4.0%	8.4%	5.8%	7.3%	56.6%
	1999	Employed	7.6%	5.6%	5.9%	8.3%	16.3%	56.3%
		Not Employed	18.1%	7.7%	4.8%	7.4%	11.8%	50.2%
	2001	Employed	6.0%	3.5%	5.8%	8.8%	14.6%	61.2%
		Not Employed	20.1%	4.0%	4.4%	8.1%	8.7%	54.7%
	2003	Employed	12.8%	5.6%	5.6%	12.5%	13.6%	49.9%
		Not Employed	27.4%	3.9%	3.9%	7.4%	6.5%	50.9%
	2007	Employed	8.9%	2.0%	4.0%	12.2%	19.3%	53.6%
		Not Employed	25.5%	4.9%	8.3%	8.8%	10.8%	41.7%
	2009	Employed	19.5%	2.0%	9.4%	14.8%	20.1%	34.2%
		Not Employed	38.5%	1.0%	9.6%	13.1%	12.0%	25.8%

			During the past 30 days, for about how many days have you felt very healthy and full of energy?					
			None	1 to 3 days	4 to 6 days	7 to 10 days	11 to 15 days	More than 15 days
Education Level	1997	Less than High School	12.5%	7.1%	9.8%	9.8%	7.1%	53.6%
		High School Diploma/GED	15.9%	4.5%	4.9%	5.7%	7.3%	61.8%
		Some College/Technical	10.4%	2.5%	8.0%	8.0%	14.7%	56.4%
		College Degree or Higher	3.3%	4.9%	5.7%	6.5%	15.4%	64.2%
	1999	Less than High School	12.8%	12.8%	3.8%	3.8%	11.5%	55.1%
		High School Diploma/GED	13.8%	6.2%	8.7%	8.0%	16.7%	46.7%
		Some College/Technical	12.7%	3.8%	4.2%	8.9%	16.9%	53.5%
		College Degree or Higher	3.1%	7.6%	2.3%	9.2%	10.7%	67.2%
	2001	Less than High School	19.6%	3.1%	3.1%	9.3%	13.4%	51.5%
		High School Diploma/GED	15.3%	4.6%	4.6%	9.2%	11.8%	54.6%
		Some College/Technical	8.7%	3.6%	7.1%	9.2%	10.7%	60.7%
		College Degree or Higher	5.0%	2.9%	5.0%	5.7%	13.6%	67.9%
	2003	Less than High School	40.3%	6.0%	6.0%	6.0%	6.0%	35.8%
		High School Diploma/GED	17.2%	5.2%	5.6%	10.3%	11.2%	50.6%
		Some College/Technical	20.1%	3.7%	6.1%	10.4%	9.8%	50.0%
		College Degree or Higher	7.0%	5.4%	2.3%	14.0%	14.0%	57.4%
	2007	Less than High School	44.4%	6.7%	2.2%	15.6%	11.1%	20.0%
		High School Diploma/GED	15.3%	1.6%	4.8%	11.7%	15.7%	50.8%
		Some College/Technical	11.8%	4.1%	6.8%	8.6%	17.7%	50.9%
		College Degree or Higher	7.4%	2.7%	5.4%	12.8%	16.9%	54.7%
	2009	Less than High School	55.0%	0.0%	0.0%	2.5%	12.5%	30.0%
		High School Diploma/GED	29.0%	2.8%	14.5%	17.3%	13.7%	22.6%
		Some College/Technical	28.3%	0.5%	8.7%	15.2%	19.0%	28.3%
		College Degree or Higher	20.7%	0.9%	3.4%	8.6%	18.1%	48.3%