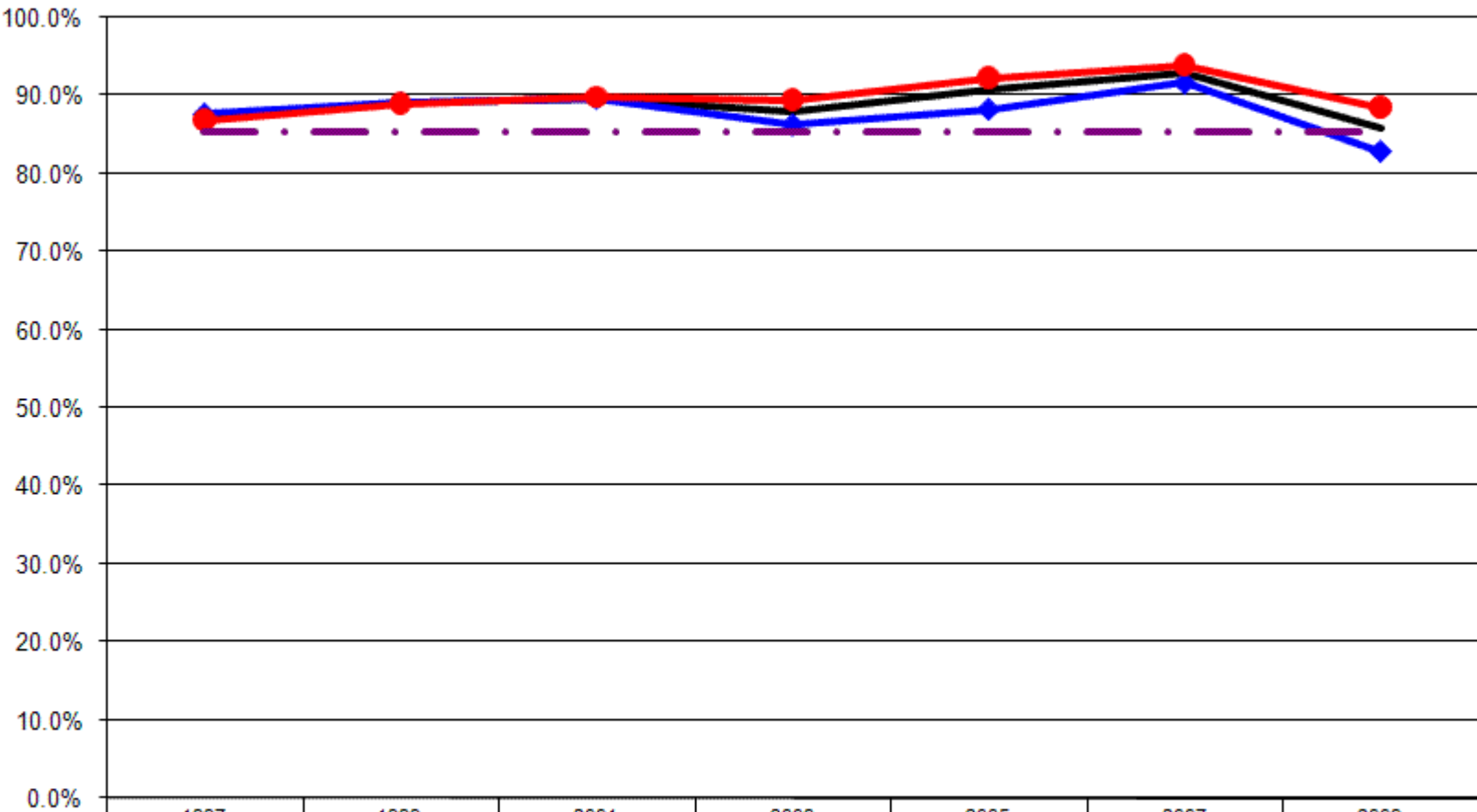


12 Year Review Health Insurance Coverage

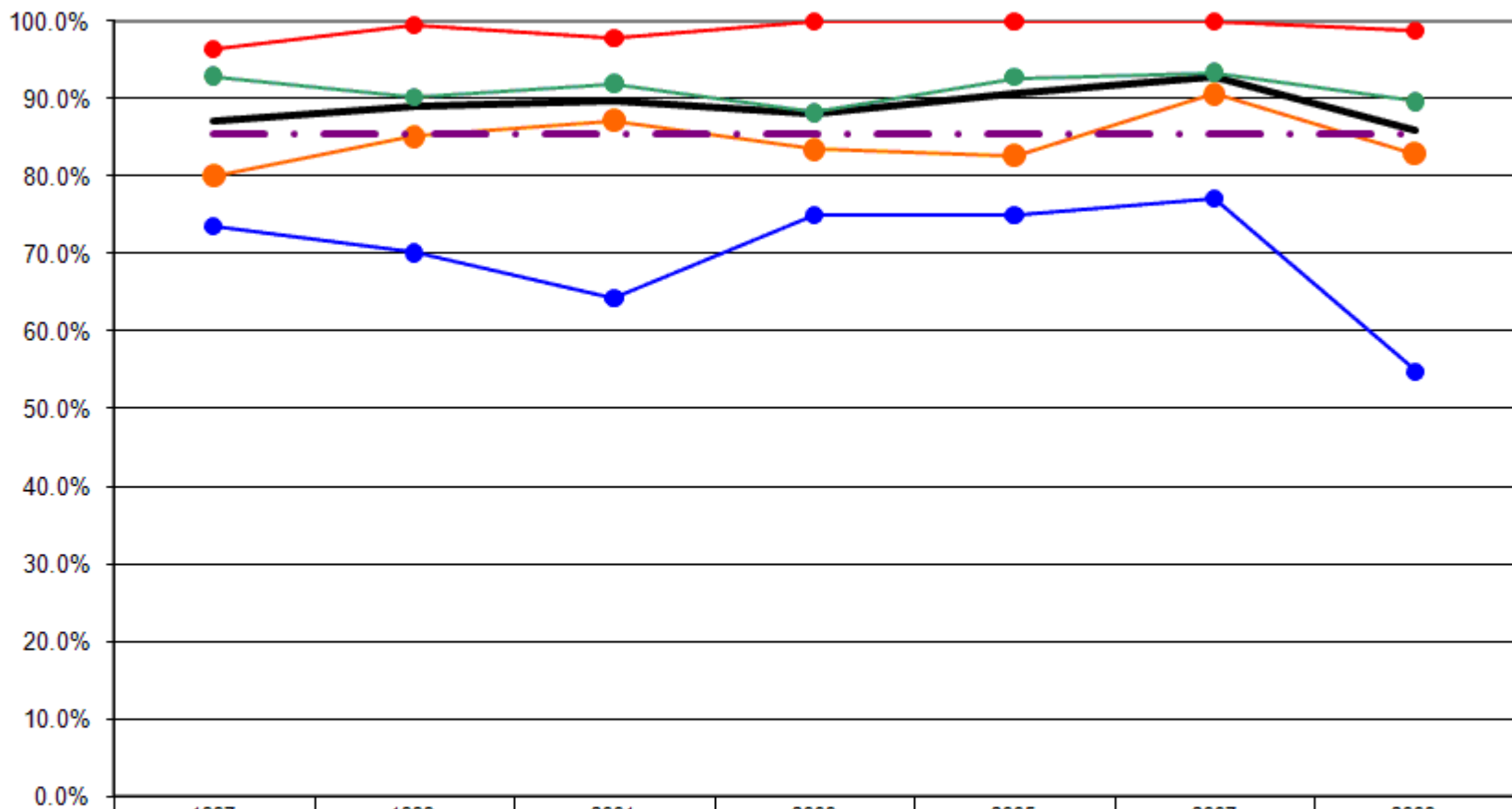
Health Insurance Coverage By Gender



	1997	1999	2001	2003	2005	2007	2009
— Total	87.1%	89.0%	89.7%	87.9%	90.8%	92.9%	85.8%
—◆ Male	87.6%	89.1%	89.7%	86.3%	88.3%	91.7%	82.8%
—● Female	86.8%	88.9%	89.8%	89.5%	92.3%	93.9%	88.5%
- - - US Total Rate*							85.4%

*Source: 2008 CDC BRFSS

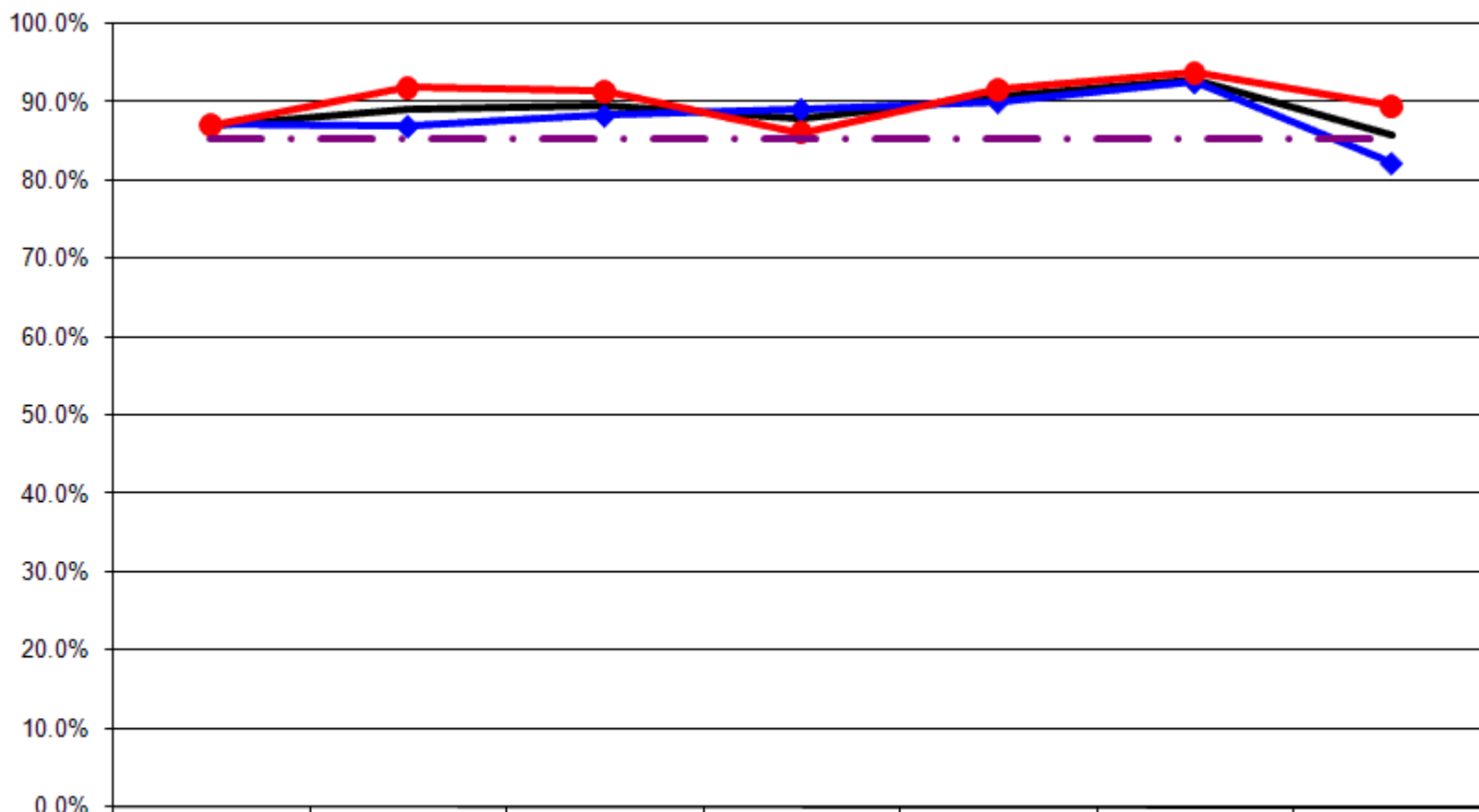
Health Insurance Coverage By Age



	1997	1999	2001	2003	2005	2007	2009
— Total	87.1%	89.0%	89.7%	87.9%	90.8%	92.9%	85.8%
—● 18-24	73.6%	70.1%	64.3%	75.0%	75.0%	77.1%	54.9%
—● 25-44	80.0%	85.1%	87.2%	83.5%	82.6%	90.7%	82.9%
—● 45-64	92.8%	90.2%	91.9%	88.2%	92.7%	93.4%	89.6%
—● 65+	96.4%	99.5%	97.9%	100.0%	100.0%	100.0%	98.9%
- - - US Total Rate*							85.4%

*Source: 2008 CDC BRFSS

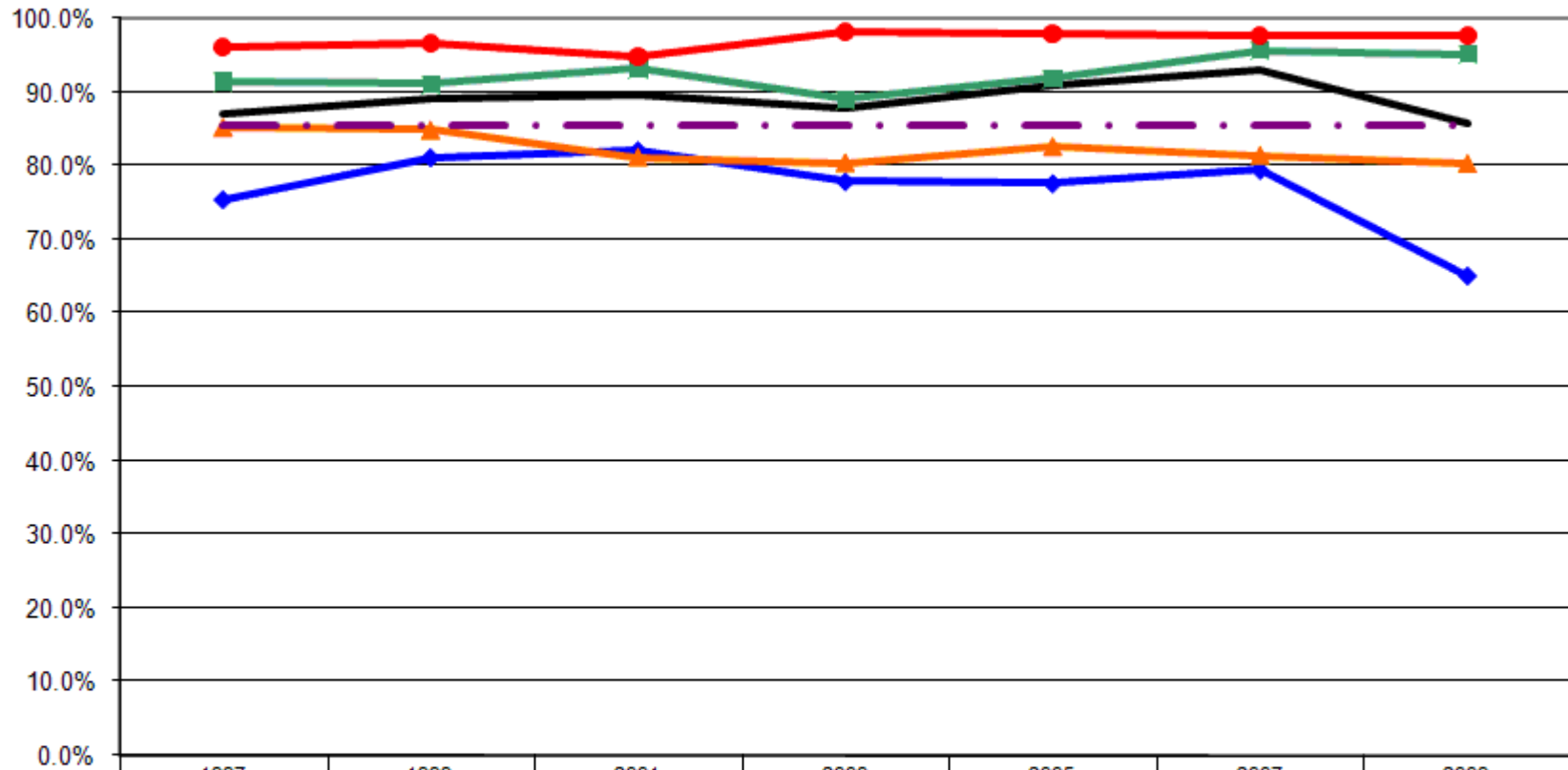
Health Insurance Coverage By Employment Status



	1997	1999	2001	2003	2005	2007	2009
— Total	87.1%	89.0%	89.7%	87.9%	90.8%	92.9%	85.8%
—◆— Employed	87.2%	87.0%	88.4%	89.2%	90.1%	92.6%	82.3%
—●— Not Employed	87.1%	91.8%	91.4%	86.1%	91.7%	93.8%	89.5%
- - - - US Total Rate*							85.4%

*Source: 2008 CDC BRFSS

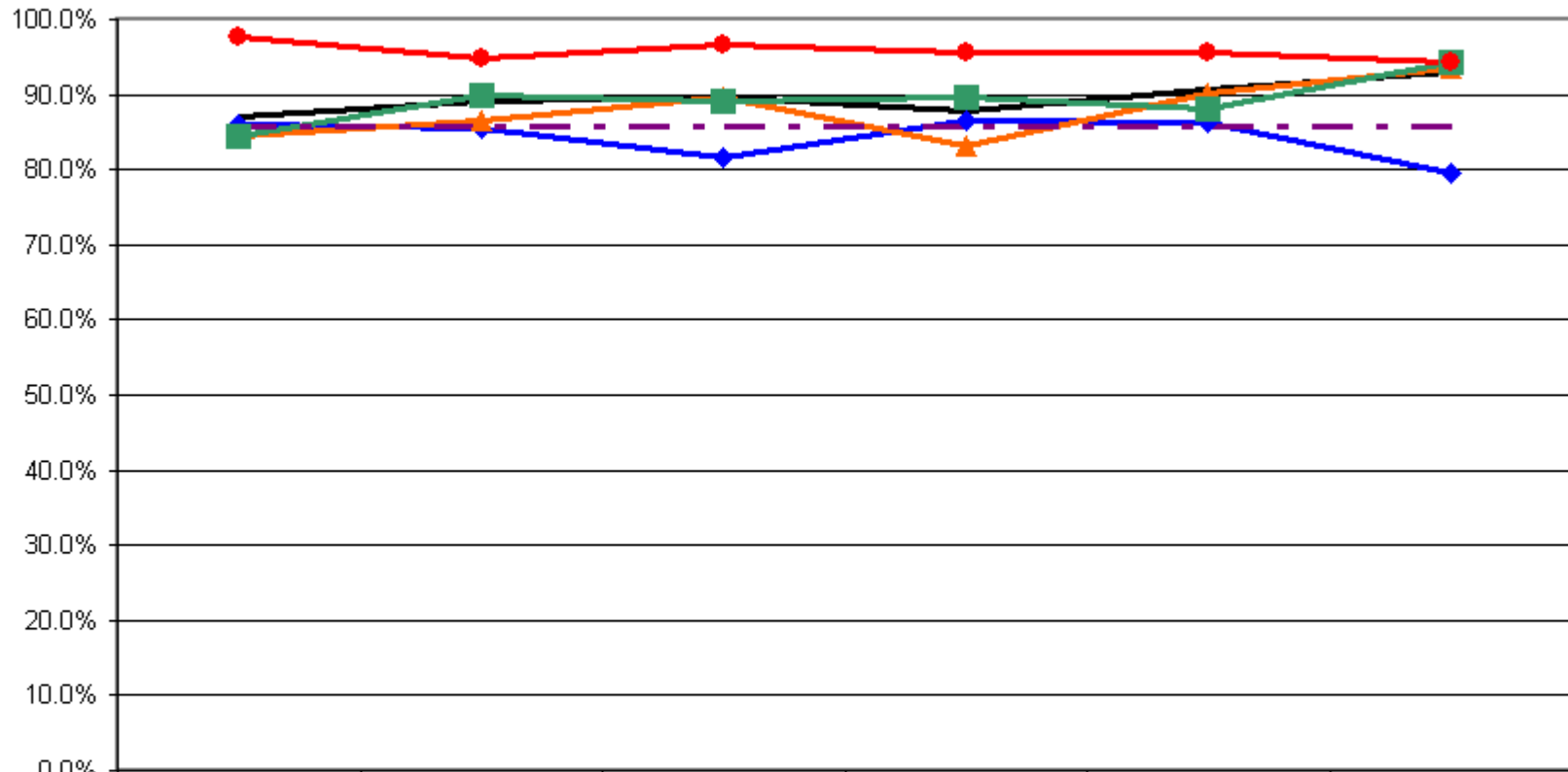
Health Insurance Coverage By Income



	1997	1999	2001	2003	2005	2007	2009
— Total	87.1%	89.0%	89.7%	87.9%	90.8%	92.9%	85.8%
—◆— <\$15K	75.4%	81.2%	82.2%	77.9%	77.6%	79.5%	65.0%
—▲— \$15-25K	85.3%	84.9%	81.2%	80.4%	82.6%	81.4%	80.3%
—■— \$25-50K	91.4%	91.0%	93.2%	89.0%	91.8%	95.6%	95.1%
—●— \$50K+	96.1%	96.6%	94.8%	98.1%	97.9%	97.6%	97.7%
- - - US Total Rate*							85.4%

*Source: 2008 CDC BRFSS

Health Insurance Coverage By Education



	1997	1999	2001	2003	2005	2007
Total	87.1%	89.0%	89.7%	87.9%	90.8%	92.9%
< HS	86.1%	85.4%	81.6%	86.5%	86.2%	79.6%
HS or GED	84.5%	86.6%	89.6%	83.2%	90.1%	93.6%
Some College	84.4%	89.9%	89.1%	89.6%	88.2%	94.2%
College Degree +	97.6%	94.7%	96.6%	95.6%	95.5%	94.2%
US Total Rate*						85.8%

*Source: CDC 2007 BRFSS

Interview Year 1997

		Do you have any kind of health coverage?	
		Yes	No
Total		87.1%	12.9%
Gender	Male	87.6%	12.4%
	Female	86.8%	13.2%
Age	18 - 24	73.6%	26.4%
	25 - 34	76.0%	24.0%
	35 - 44	83.8%	16.2%
	45 - 54	96.0%	4.0%
	55 - 64	89.0%	11.0%
	65+	96.4%	3.6%
Employed	Yes	87.2%	12.8%
	No	87.1%	12.9%
Income	< \$15K	75.4%	24.6%
	\$15-25K	85.3%	14.7%
	\$25-50K	91.4%	8.6%
	\$50K +	96.1%	3.9%
Education	Less than High School	86.1%	13.9%
	High School Diploma or GED	84.5%	15.5%
	Some College/Technical	84.4%	15.6%
	College Degree or Higher	97.6%	2.4%

Interview Year 1999

		Do you have any kind of health coverage?	
		Yes	No
Total		89.0%	11.0%
Gender	Male	89.1%	10.9%
	Female	88.9%	11.1%
Age	18 - 24	70.1%	29.9%
	25 - 34	83.3%	16.7%
	35 - 44	86.5%	13.5%
	45 - 54	90.8%	9.2%
	55 - 64	91.0%	9.0%
	65+	99.4%	.6%
Employed	Yes	87.0%	13.0%
	No	91.8%	8.2%
Income	< \$15K	81.2%	18.8%
	\$15-25K	84.9%	15.1%
	\$25-50K	91.0%	9.0%
	\$50K +	96.6%	3.4%
Education	Less than High School	85.4%	14.6%
	High School Diploma or GED	86.6%	13.4%
	Some College/Technical	89.9%	10.1%
	College Degree or Higher	94.7%	5.3%

Interview Year 2001

		Do you have any kind of health coverage?	
		Yes	No
Total		89.7%	10.3%
Gender	Male	89.7%	10.3%
	Female	89.8%	10.2%
Age	18 - 24	64.3%	35.7%
	25 - 34	83.8%	16.2%
	35 - 44	89.7%	10.3%
	45 - 54	94.2%	5.8%
	55 - 64	88.8%	11.2%
	65+	97.9%	2.1%
Employed	Yes	88.4%	11.6%
	No	91.4%	8.6%
Income	< \$15K	82.2%	17.8%
	\$15-25K	81.2%	18.8%
	\$25-50K	93.2%	6.8%
	\$50K +	94.8%	5.2%
Education	Less than High School	81.6%	18.4%
	High School Diploma or GED	89.6%	10.4%
	Some College/Technical	89.1%	10.9%
	College Degree or Higher	96.6%	3.4%

Interview Year 2003

		Do you have any kind of health coverage?	
		Yes	No
Total		87.9%	12.1%
Gender	Male	86.3%	13.8%
	Female	89.5%	10.5%
Age	18 - 24	75.0%	25.0%
	25 - 34	77.7%	22.3%
	35 - 44	88.5%	11.5%
	45 - 54	85.5%	14.5%
	55 - 64	91.8%	8.2%
	65+	100.0%	.0%
Employed	Yes	89.2%	10.8%
	No	86.1%	13.9%
Income	< \$15K	77.9%	22.1%
	\$15-25K	80.4%	19.6%
	\$25-50K	89.0%	11.0%
	\$50K +	98.1%	1.9%
Education	Less than High School	86.5%	13.5%
	High School Diploma or GED	83.2%	16.8%
	Some College/Technical	89.6%	10.4%
	College Degree or Higher	95.6%	4.4%

Interview Year 2005

		Do you have any kind of health coverage?	
		Yes	No
Total		90.8%	9.2%
Gender	Male	88.3%	11.7%
	Female	92.3%	7.7%
Age	18 - 24	75.0%	25.0%
	25 - 34	83.9%	16.1%
	35 - 44	81.7%	18.3%
	45 - 54	93.3%	6.7%
	55 - 64	92.0%	8.0%
	65+	100.0%	.0%
Employed	Yes	90.1%	9.9%
	No	91.7%	8.3%
Income	< \$15K	77.6%	22.4%
	\$15-25K	82.6%	17.4%
	\$25-50K	91.8%	8.2%
	\$50K +	97.9%	2.1%
Education	Less than High School	86.2%	13.8%
	High School Diploma or GED	90.1%	9.9%
	Some College/Technical	88.2%	11.8%
	College Degree or Higher	95.5%	4.5%

Interview Year 2007

		Do you have any kind of health coverage?	
		Yes	No
Total		92.9%	7.1%
Gender	Male	91.7%	8.3%
	Female	93.9%	6.1%
Age	18 - 24	77.1%	22.9%
	25 - 34	89.7%	10.3%
	35 - 44	91.5%	8.5%
	45 - 54	92.4%	7.6%
	55 - 64	94.4%	5.6%
	65+	100.0%	.0%
Employed	Yes	92.6%	7.4%
	No	93.8%	6.3%
Income	< \$15K	79.5%	20.5%
	\$15-25K	81.4%	18.6%
	\$25-50K	95.6%	4.4%
	\$50K +	97.6%	2.4%
Education	Less than High School	79.6%	20.4%
	High School Diploma or GED	93.6%	6.4%
	Some College/Technical	94.2%	5.8%
	College Degree or Higher	94.2%	5.8%

Interview Year 2009

		Do you have any kind of health coverage?	
		Yes	No
Total		85.8%	14.2%
Gender	Male	82.8%	17.2%
	Female	88.5%	11.5%
Age	18 - 24	54.9%	45.1%
	25 - 34	76.6%	23.4%
	35 - 44	89.2%	10.8%
	45 - 54	86.2%	13.8%
	55 - 64	93.2%	6.8%
	65+	98.9%	1.1%
Employed	Yes	82.3%	17.7%
	No	89.5%	10.5%
Income	< \$15K	65.0%	35.0%
	\$15-25K	80.3%	19.7%
	\$25-50K	95.1%	4.9%
	\$50K +	97.7%	2.3%
Education	Less than High School	89.4%	10.6%
	High School Diploma or GED	82.1%	17.9%
	Some College/Technical	84.1%	15.9%
	College Degree or Higher	96.2%	3.8%

			Do you have any kind of health coverage?	
			Yes	No
Gender	1997	Male	87.6%	12.4%
		Female	86.8%	13.2%
	1999	Male	89.1%	10.9%
		Female	88.9%	11.1%
	2001	Male	89.7%	10.3%
		Female	89.8%	10.2%
	2003	Male	86.3%	13.8%
		Female	89.5%	10.5%
	2005	Male	88.3%	11.7%
		Female	92.3%	7.7%
	2007	Male	91.7%	8.3%
		Female	93.9%	6.1%
	2009	Male	82.8%	17.2%
		Female	88.5%	11.5%

			Do you have any kind of health coverage?	
			Yes	No
Income Level	1997	< \$15K	75.4%	24.6%
		\$15-25K	85.3%	14.7%
		\$25-50K	91.4%	8.6%
		\$50K +	96.1%	3.9%
	1999	< \$15K	81.2%	18.8%
		\$15-25K	84.9%	15.1%
		\$25-50K	91.0%	9.0%
		\$50K +	96.6%	3.4%
	2001	< \$15K	82.2%	17.8%
		\$15-25K	81.2%	18.8%
		\$25-50K	93.2%	6.8%
		\$50K +	94.8%	5.2%
	2003	< \$15K	77.9%	22.1%
		\$15-25K	80.4%	19.6%
		\$25-50K	89.0%	11.0%
		\$50K +	98.1%	1.9%
2005	< \$15K	77.6%	22.4%	
	\$15-25K	82.6%	17.4%	
	\$25-50K	91.8%	8.2%	
	\$50K +	97.9%	2.1%	
2007	< \$15K	79.5%	20.5%	
	\$15-25K	81.4%	18.6%	
	\$25-50K	95.6%	4.4%	
	\$50K +	97.6%	2.4%	
2009	< \$15K	65.0%	35.0%	
	\$15-25K	80.3%	19.7%	
	\$25-50K	95.1%	4.9%	
	\$50K +	97.7%	2.3%	

Do you have any kind of health coverage?

			Yes	No
Age	1997	18 - 24	73.6%	26.4%
		25 - 34	76.0%	24.0%
		35 - 44	83.8%	16.2%
		45 - 54	96.0%	4.0%
		55 - 64	89.0%	11.0%
		65+	96.4%	3.6%
	1999	18 - 24	70.1%	29.9%
		25 - 34	83.3%	16.7%
		35 - 44	86.5%	13.5%
		45 - 54	90.8%	9.2%
		55 - 64	91.0%	9.0%
		65+	99.4%	0.6%
	2001	18 - 24	64.3%	35.7%
		25 - 34	83.8%	16.2%
		35 - 44	89.7%	10.3%
		45 - 54	94.2%	5.8%
		55 - 64	88.8%	11.2%
		65+	97.9%	2.1%
	2003	18 - 24	75.0%	25.0%
		25 - 34	77.7%	22.3%
		35 - 44	88.5%	11.5%
		45 - 54	85.5%	14.5%
		55 - 64	91.8%	8.2%
		65+	100.0%	0.0%
	2005	18 - 24	75.0%	25.0%
		25 - 34	83.9%	16.1%
		35 - 44	81.7%	18.3%
		45 - 54	93.3%	6.7%
		55 - 64	92.0%	8.0%
		65+	100.0%	0.0%
2007	18 - 24	77.1%	22.9%	
	25 - 34	89.7%	10.3%	
	35 - 44	91.5%	8.5%	
	45 - 54	92.4%	7.6%	
	55 - 64	94.4%	5.6%	
	65+	100.0%	0.0%	
2009	18 - 24	54.9%	45.1%	
	25 - 34	76.6%	23.4%	
	35 - 44	89.2%	10.8%	
	45 - 54	86.2%	13.8%	
	55 - 64	93.2%	6.8%	
	65+	98.9%	1.1%	

Do you have any kind of health coverage?

			Yes	No
Employment Status	1997	Employed	87.2%	12.8%
		Not Employed	87.1%	12.9%
	1999	Employed	87.0%	13.0%
		Not Employed	91.8%	8.2%
	2001	Employed	88.4%	11.6%
		Not Employed	91.4%	8.6%
	2003	Employed	89.2%	10.8%
		Not Employed	86.1%	13.9%
	2005	Employed	90.1%	9.9%
		Not Employed	91.7%	8.3%
	2007	Employed	92.6%	7.4%
		Not Employed	93.8%	6.3%
	2009	Employed	82.3%	17.7%
		Not Employed	89.5%	10.5%

			Do you have any kind of health coverage?	
			Yes	No
Education Level	1997	Less than High School	86.1%	13.9%
		High School Diploma or GED	84.5%	15.5%
		Some College/Technical	84.4%	15.6%
		College Degree or Higher	97.6%	2.4%
	1999	Less than High School	85.4%	14.6%
		High School Diploma or GED	86.6%	13.4%
		Some College/Technical	89.9%	10.1%
		College Degree or Higher	94.7%	5.3%
	2001	Less than High School	81.6%	18.4%
		High School Diploma or GED	89.6%	10.4%
		Some College/Technical	89.1%	10.9%
		College Degree or Higher	96.6%	3.4%
	2003	Less than High School	86.5%	13.5%
		High School Diploma or GED	83.2%	16.8%
		Some College/Technical	89.6%	10.4%
		College Degree or Higher	95.6%	4.4%
2005	Less than High School	86.2%	13.8%	
	High School Diploma or GED	90.1%	9.9%	
	Some College/Technical	88.2%	11.8%	
	College Degree or Higher	95.5%	4.5%	
2007	Less than High School	79.6%	20.4%	
	High School Diploma or GED	93.6%	6.4%	
	Some College/Technical	94.2%	5.8%	
	College Degree or Higher	94.2%	5.8%	
2009	Less than High School	89.4%	10.6%	
	High School Diploma or GED	82.1%	17.9%	
	Some College/Technical	84.1%	15.9%	
	College Degree or Higher	96.2%	3.8%	