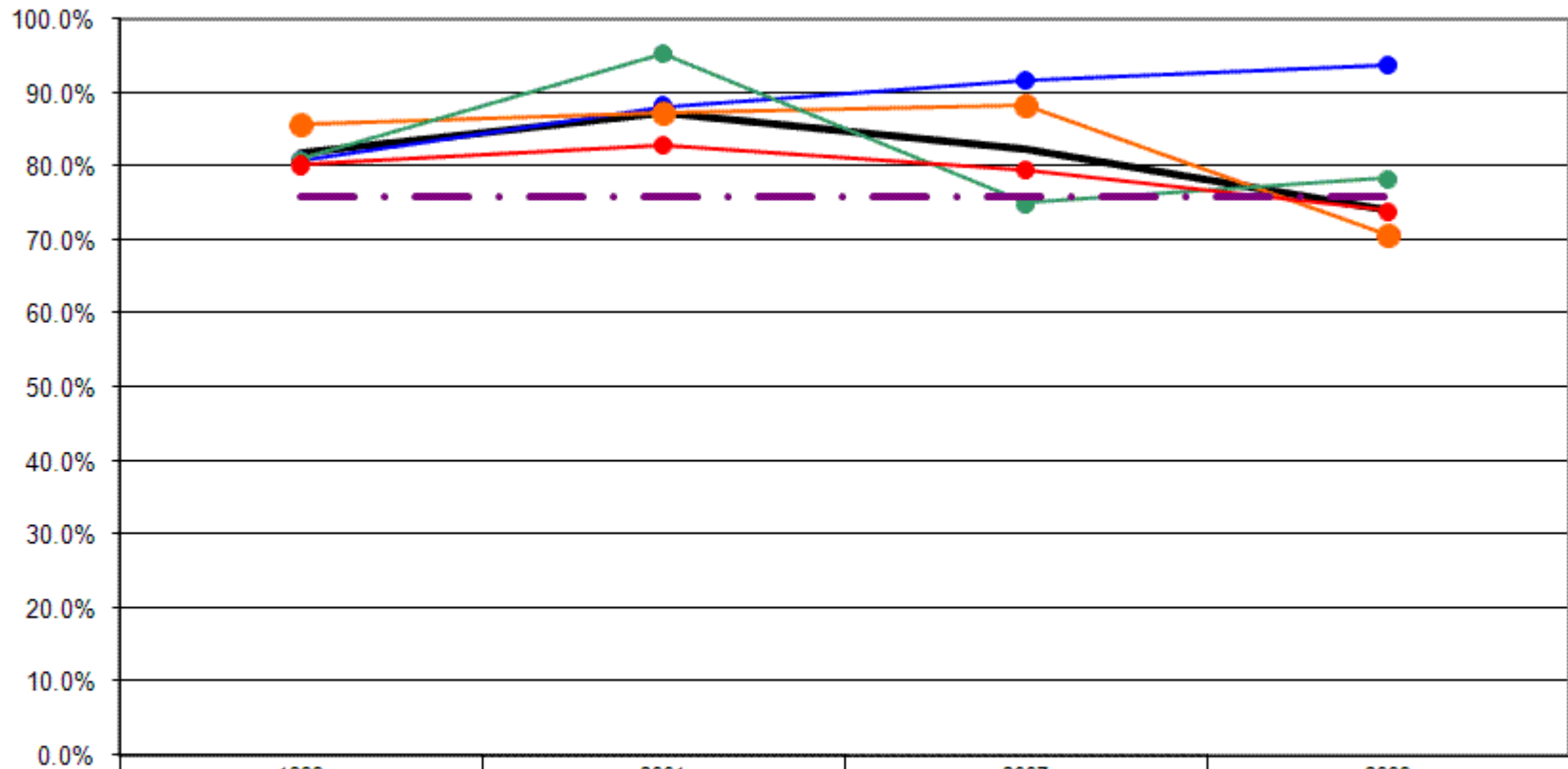


## 12 Year Review

### How long has it been since your last mammogram?

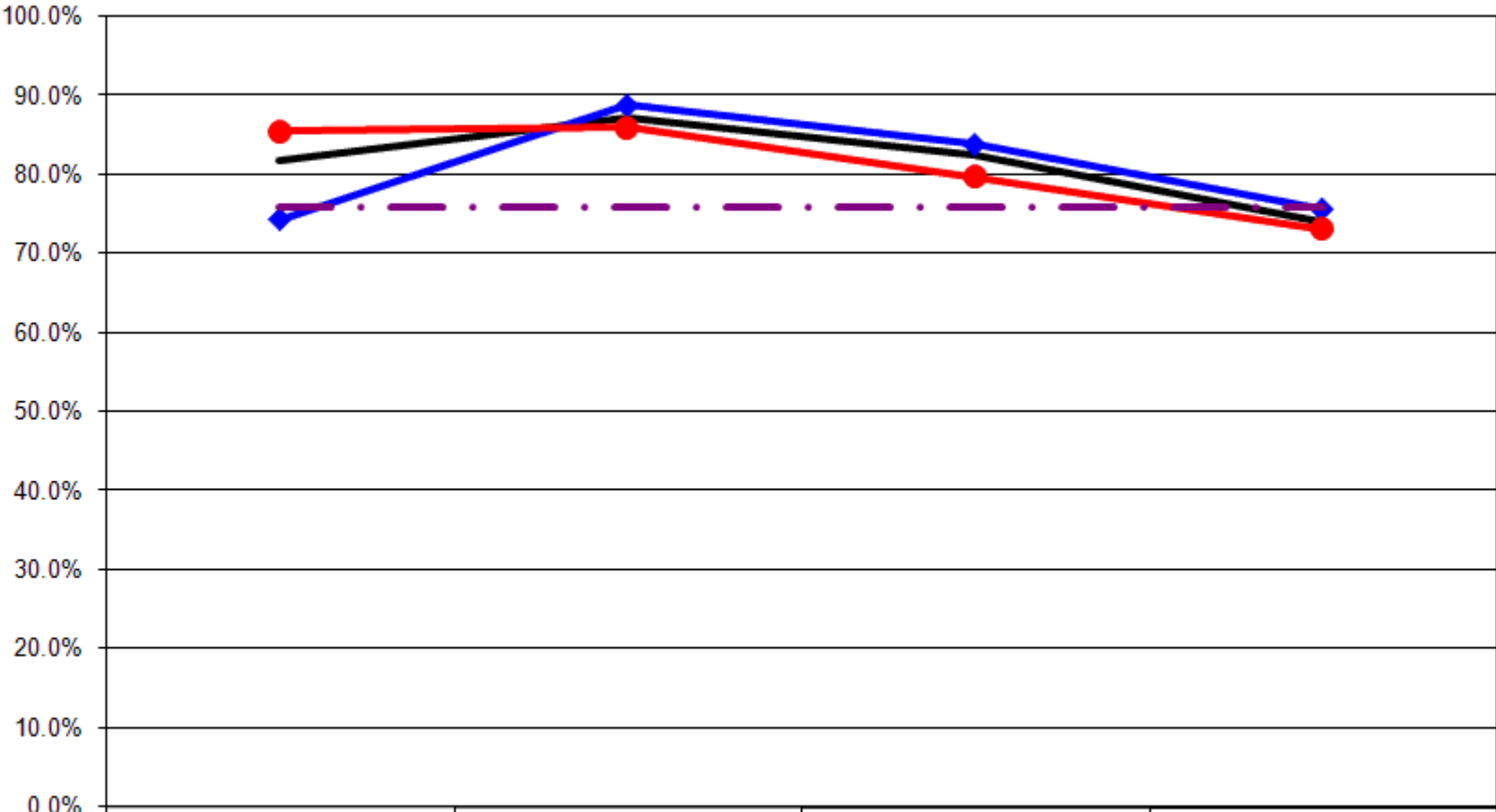
**Had Mammogram Within Past 2 Years By Age**



	1999	2001	2007	2009
— Total	81.7%	87.2%	82.4%	74.0%
—●— 40-44	80.8%	88.2%	91.7%	93.8%
—●— 45-54	85.7%	87.3%	88.3%	70.7%
—●— 55-64	80.9%	95.3%	75.0%	78.3%
—●— 65+	80.2%	82.8%	79.5%	74.0%
- - - US Total Rate*				76.0%

\*Source: 2008 CDC BRFSS

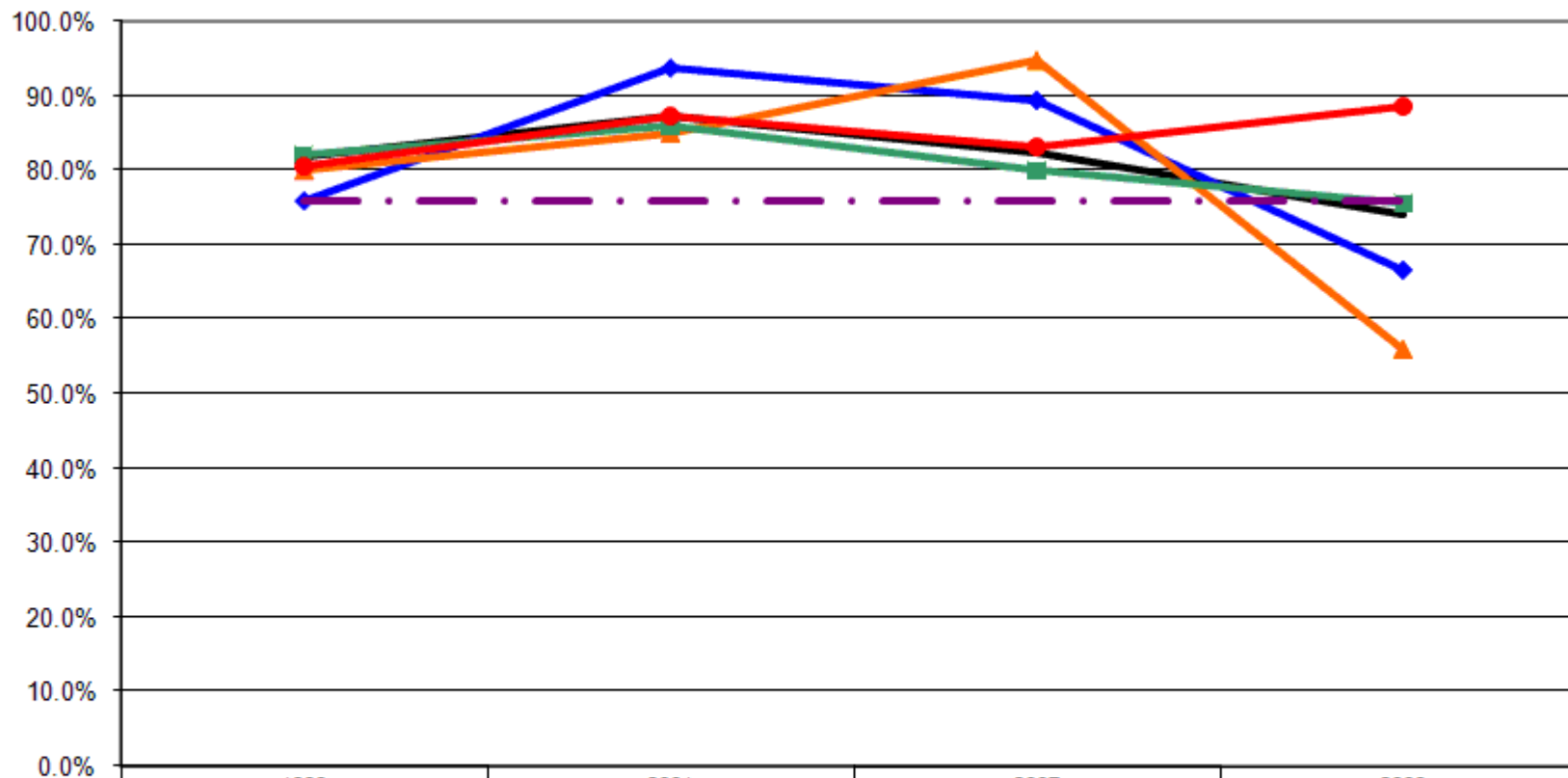
### Had Mammogram Within Past 2 Years By Employment Status



	1999	2001	2007	2009
— Total	81.7%	87.2%	82.4%	74.0%
—◆— Employed	74.4%	88.9%	83.9%	75.7%
—●— Not Employed	85.5%	86.0%	79.8%	73.2%
- - - US Total Rate*				76.0%

\*Source: 2008 CDC BRFSS

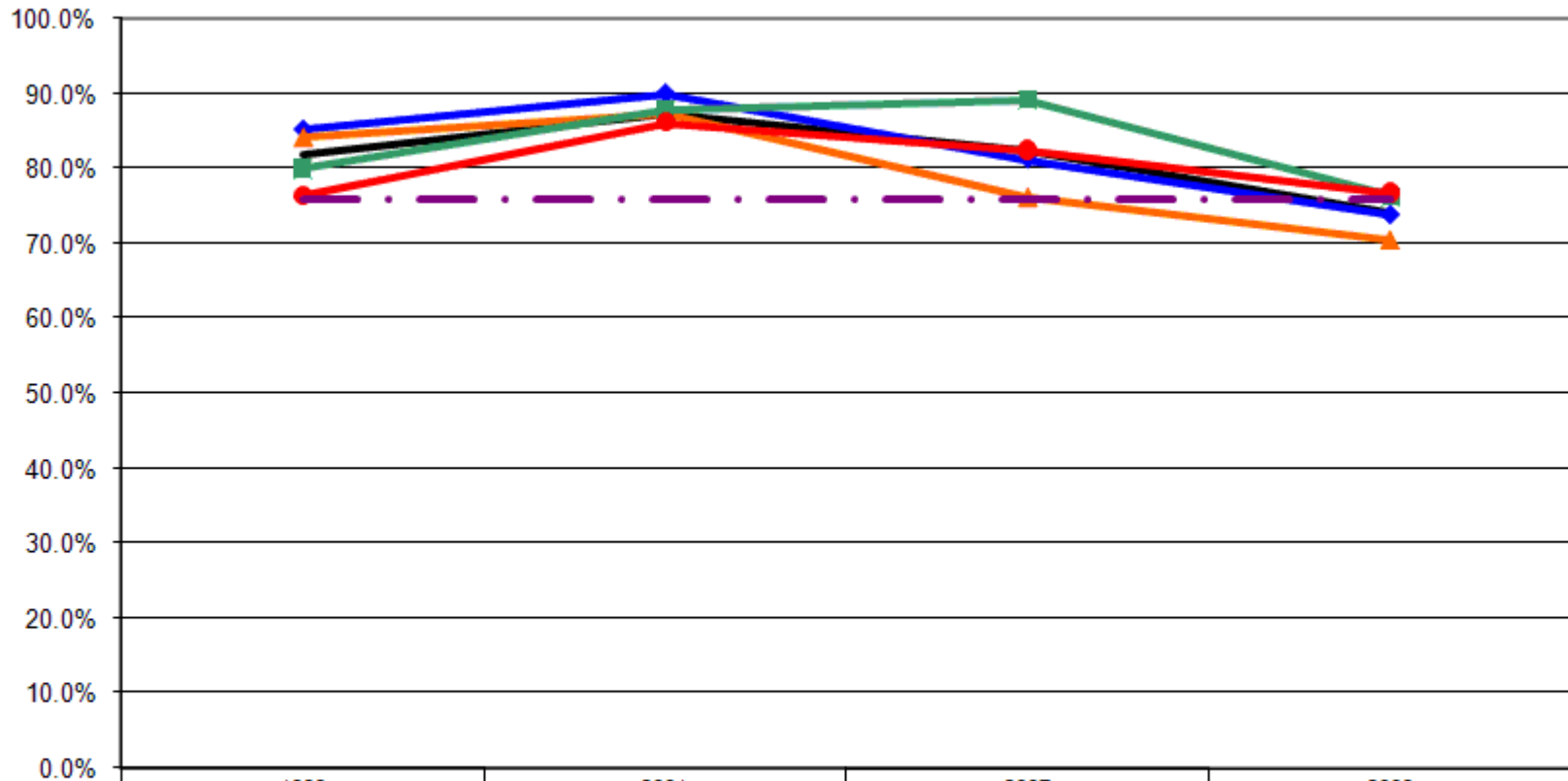
### Had Mammogram Within Past 2 Years By Income



	1999	2001	2007	2009
— Total	81.7%	87.2%	82.4%	74.0%
—◆— <\$15K	76.0%	93.8%	89.5%	66.7%
—▲— \$15-25K	80.0%	85.0%	94.7%	56.0%
—■— \$25-50K	82.0%	85.9%	80.0%	75.6%
—●— \$50K+	80.6%	87.2%	83.1%	88.5%
-.-.- US Total Rate*				76.0%

\*Source: 2008 CDC BRFSS

### Had Mammogram Within Past 2 Years By Education



	1999	2001	2007	2009
— Total	81.7%	87.2%	82.4%	74.0%
—◆— <HS	85.2%	90.0%	81.3%	73.9%
—▲— HS or GED	84.1%	87.2%	76.1%	70.4%
—■— Some College	80.0%	87.9%	89.2%	76.3%
—●— College Degree +	76.5%	86.1%	82.4%	76.8%
- - - US Total Rate*				76.0%

\*Source: 2008 CDC BRFSS

Interview Year 1999

		How long has it been since you had your last mammogram?				
		Within the past year	Within the past 2 years	Within the past 3 years	Within the past 5 years	5 or more years ago
<b>Total</b>		<b>65.6%</b>	<b>16.1%</b>	<b>5.5%</b>	<b>6.0%</b>	<b>6.9%</b>
Age	40 - 44	69.2%	11.5%	3.8%	7.7%	7.7%
	45 - 54	69.4%	16.3%	8.2%	2.0%	4.1%
	55 - 64	70.2%	10.6%	4.3%	6.4%	8.5%
	65+	60.4%	19.8%	5.2%	7.3%	7.3%
Employed	Yes	57.3%	17.1%	8.5%	8.5%	8.5%
	No	70.2%	15.3%	3.8%	4.6%	6.1%
Income	< \$15K	62.0%	14.0%	8.0%	8.0%	8.0%
	\$15-25K	64.0%	16.0%	4.0%	8.0%	8.0%
	\$25-50K	68.0%	14.0%	6.0%	6.0%	6.0%
	\$50K +	61.3%	19.4%	0.0%	6.5%	12.9%
Education	Less than High School	59.3%	25.9%	3.7%	7.4%	3.7%
	High School Diploma or GED	67.1%	17.1%	4.9%	8.5%	2.4%
	Some College/Technical	66.7%	13.3%	5.3%	4.0%	10.7%
	College Degree or Higher	64.7%	11.8%	8.8%	2.9%	11.8%

Interview Year 2001

		How long has it been since you had your last mammogram?				
		Within the past year	Within the past 2 years	Within the past 3 years	Within the past 5 years	5 or more years ago
<b>Total</b>		<b>71.2%</b>	<b>16.0%</b>	<b>3.7%</b>	<b>3.7%</b>	<b>5.5%</b>
Age	40 - 44	70.6%	17.6%	5.9%	2.9%	2.9%
	45 - 54	74.5%	12.7%	3.6%	3.6%	5.5%
	55 - 64	83.7%	11.6%	0.0%	0.0%	4.7%
	65+	63.2%	19.5%	4.6%	5.7%	6.9%
Employed	Yes	74.4%	14.4%	2.2%	4.4%	4.4%
	No	69.0%	17.1%	4.7%	3.1%	6.2%
Income	< \$15K	75.0%	18.8%	0.0%	3.1%	3.1%
	\$15-25K	60.0%	25.0%	5.0%	2.5%	7.5%
	\$25-50K	74.4%	11.5%	6.4%	2.6%	5.1%
	\$50K +	74.4%	12.8%	2.6%	5.1%	5.1%
Education	Less than High School	66.7%	23.3%	6.7%	0.0%	3.3%
	High School Diploma or GED	75.6%	11.6%	4.7%	3.5%	4.7%
	Some College/Technical	68.2%	19.7%	0.0%	6.1%	6.1%
	College Degree or Higher	72.2%	13.9%	5.6%	0.0%	8.3%

Interview Year 2007

		How long has it been since you had your last mammogram?				
		Within the past year	Within the past 2 years	Within the past 3 years	Within the past 5 years	5 or more years ago
<b>Total</b>		<b>61.0%</b>	<b>21.5%</b>	<b>7.3%</b>	<b>5.4%</b>	<b>4.9%</b>
Age	40 - 44	62.5%	29.2%	4.2%	0.0%	4.2%
	45 - 54	65.0%	23.3%	5.0%	5.0%	1.7%
	55 - 64	58.3%	16.7%	10.4%	8.3%	6.3%
	65+	58.9%	20.5%	8.2%	5.5%	6.8%
Employed	Yes	61.6%	22.2%	6.1%	6.1%	4.0%
	No	58.6%	21.2%	9.1%	5.1%	6.1%
Income	< \$15K	63.2%	26.3%	0.0%	5.3%	5.3%
	\$15-25K	73.7%	21.1%	0.0%	0.0%	5.3%
	\$25-50K	54.5%	25.5%	9.1%	7.3%	3.6%
	\$50K +	63.1%	20.0%	7.7%	6.2%	3.1%
Education	Less than High School	37.5%	43.8%	12.5%	0.0%	6.3%
	High School Diploma or GED	57.7%	18.3%	8.5%	7.0%	8.5%
	Some College/Technical	67.7%	21.5%	6.2%	3.1%	1.5%
	College Degree or Higher	62.7%	19.6%	5.9%	7.8%	3.9%

Interview Year 2009

		How long has it been since you had your last mammogram?				
		Within the past year	Within the past 2 years	Within the past 3 years	Within the past 5 years	5 or more years ago
<b>Total</b>		<b>54.3%</b>	<b>19.6%</b>	<b>13.7%</b>	<b>5.9%</b>	<b>6.4%</b>
Age	40 - 44	56.3%	37.5%	0.0%	0.0%	6.3%
	45 - 54	43.4%	20.8%	28.3%	5.7%	1.9%
	55 - 64	65.2%	13.0%	13.0%	4.3%	4.3%
	65+	54.8%	19.2%	8.7%	7.7%	9.6%
Employed	Yes	52.9%	22.9%	18.6%	1.4%	4.3%
	No	55.0%	18.1%	11.4%	8.1%	7.4%
Income	< \$15K	48.1%	18.5%	14.8%	11.1%	7.4%
	\$15-25K	36.0%	20.0%	8.0%	12.0%	24.0%
	\$25-50K	55.6%	20.0%	17.8%	4.4%	2.2%
	\$50K +	76.9%	11.5%	3.8%	0.0%	7.7%
Education	Less than High School	52.2%	21.7%	4.3%	8.7%	13.0%
	High School Diploma or GED	50.6%	19.8%	14.8%	7.4%	7.4%
	Some College/Technical	59.3%	16.9%	15.3%	3.4%	5.1%
	College Degree or Higher	55.4%	21.4%	14.3%	5.4%	3.6%

			How long has it been since you had your last mammogram?				
			Within the	Within the	Within the	Within the	5 or more
			past year	past 2	past 3	past 5	years ago
			years	years	years	years	
Age	1999	40 - 44	69.2%	11.5%	3.8%	7.7%	7.7%
		45 - 54	69.4%	16.3%	8.2%	2.0%	4.1%
		55 - 64	70.2%	10.6%	4.3%	6.4%	8.5%
		65+	60.4%	19.8%	5.2%	7.3%	7.3%
	2001	40 - 44	70.6%	17.6%	5.9%	2.9%	2.9%
		45 - 54	74.5%	12.7%	3.6%	3.6%	5.5%
		55 - 64	83.7%	11.6%	0.0%	0.0%	4.7%
		65+	63.2%	19.5%	4.6%	5.7%	6.9%
	2007	40 - 44	62.5%	29.2%	4.2%	0.0%	4.2%
		45 - 54	65.0%	23.3%	5.0%	5.0%	1.7%
		55 - 64	58.3%	16.7%	10.4%	8.3%	6.3%
		65+	58.9%	20.5%	8.2%	5.5%	6.8%
	2009	40 - 44	56.3%	37.5%	0.0%	0.0%	6.3%
		45 - 54	43.4%	20.8%	28.3%	5.7%	1.9%
		55 - 64	65.2%	13.0%	13.0%	4.3%	4.3%
		65+	54.8%	19.2%	8.7%	7.7%	9.6%

			How long has it been since you had your last mammogram?				
			Within the	Within the	Within the	Within the	5 or more
			past year	past 2	past 3	past 5	years ago
			years	years	years	years	
Employment Status	1999	Employed	57.3%	17.1%	8.5%	8.5%	8.5%
		Not Employed	70.2%	15.3%	3.8%	4.6%	6.1%
	2001	Employed	74.4%	14.4%	2.2%	4.4%	4.4%
		Not Employed	69.0%	17.1%	4.7%	3.1%	6.2%
	2007	Employed	61.6%	22.2%	6.1%	6.1%	4.0%
		Not Employed	58.6%	21.2%	9.1%	5.1%	6.1%
	2009	Employed	52.9%	22.9%	18.6%	1.4%	4.3%
		Not Employed	55.0%	18.1%	11.4%	8.1%	7.4%

			How long has it been since you had your last mammogram?				
			Within the past year	Within the past 2 years	Within the past 3 years	Within the past 5 years	5 or more years ago
Income Level	1999	< \$15K	62.0%	14.0%	8.0%	8.0%	8.0%
		\$15-25K	64.0%	16.0%	4.0%	8.0%	8.0%
		\$25-50K	68.0%	14.0%	6.0%	6.0%	6.0%
		\$50K +	61.3%	19.4%	0.0%	6.5%	12.9%
	2001	< \$15K	75.0%	18.8%	0.0%	3.1%	3.1%
		\$15-25K	60.0%	25.0%	5.0%	2.5%	7.5%
		\$25-50K	74.4%	11.5%	6.4%	2.6%	5.1%
		\$50K +	74.4%	12.8%	2.6%	5.1%	5.1%
	2007	< \$15K	63.2%	26.3%	0.0%	5.3%	5.3%
		\$15-25K	73.7%	21.1%	0.0%	0.0%	5.3%
		\$25-50K	54.5%	25.5%	9.1%	7.3%	3.6%
		\$50K +	63.1%	20.0%	7.7%	6.2%	3.1%
	2009	< \$15K	48.1%	18.5%	14.8%	11.1%	7.4%
		\$15-25K	36.0%	20.0%	8.0%	12.0%	24.0%
		\$25-50K	55.6%	20.0%	17.8%	4.4%	2.2%
		\$50K +	76.9%	11.5%	3.8%	0.0%	7.7%

			How long has it been since you had your last mammogram?				
			Within the past year	Within the past 2 years	Within the past 3 years	Within the past 5 years	5 or more years ago
Education Level	1999	Less than High School	59.3%	25.9%	3.7%	7.4%	3.7%
		High School Diploma or GED	67.1%	17.1%	4.9%	8.5%	2.4%
		Some College/Technical	66.7%	13.3%	5.3%	4.0%	10.7%
		College Degree or Higher	64.7%	11.8%	8.8%	2.9%	11.8%
	2001	Less than High School	66.7%	23.3%	6.7%	0.0%	3.3%
		High School Diploma or GED	75.6%	11.6%	4.7%	3.5%	4.7%
		Some College/Technical	68.2%	19.7%	0.0%	6.1%	6.1%
		College Degree or Higher	72.2%	13.9%	5.6%	0.0%	8.3%
	2007	Less than High School	37.5%	43.8%	12.5%	0.0%	6.3%
		High School Diploma or GED	57.7%	18.3%	8.5%	7.0%	8.5%
		Some College/Technical	67.7%	21.5%	6.2%	3.1%	1.5%
		College Degree or Higher	62.7%	19.6%	5.9%	7.8%	3.9%
	2009	Less than High School	52.2%	21.7%	4.3%	8.7%	13.0%
		High School Diploma or GED	50.6%	19.8%	14.8%	7.4%	7.4%
		Some College/Technical	59.3%	16.9%	15.3%	3.4%	5.1%
		College Degree or Higher	55.4%	21.4%	14.3%	5.4%	3.6%