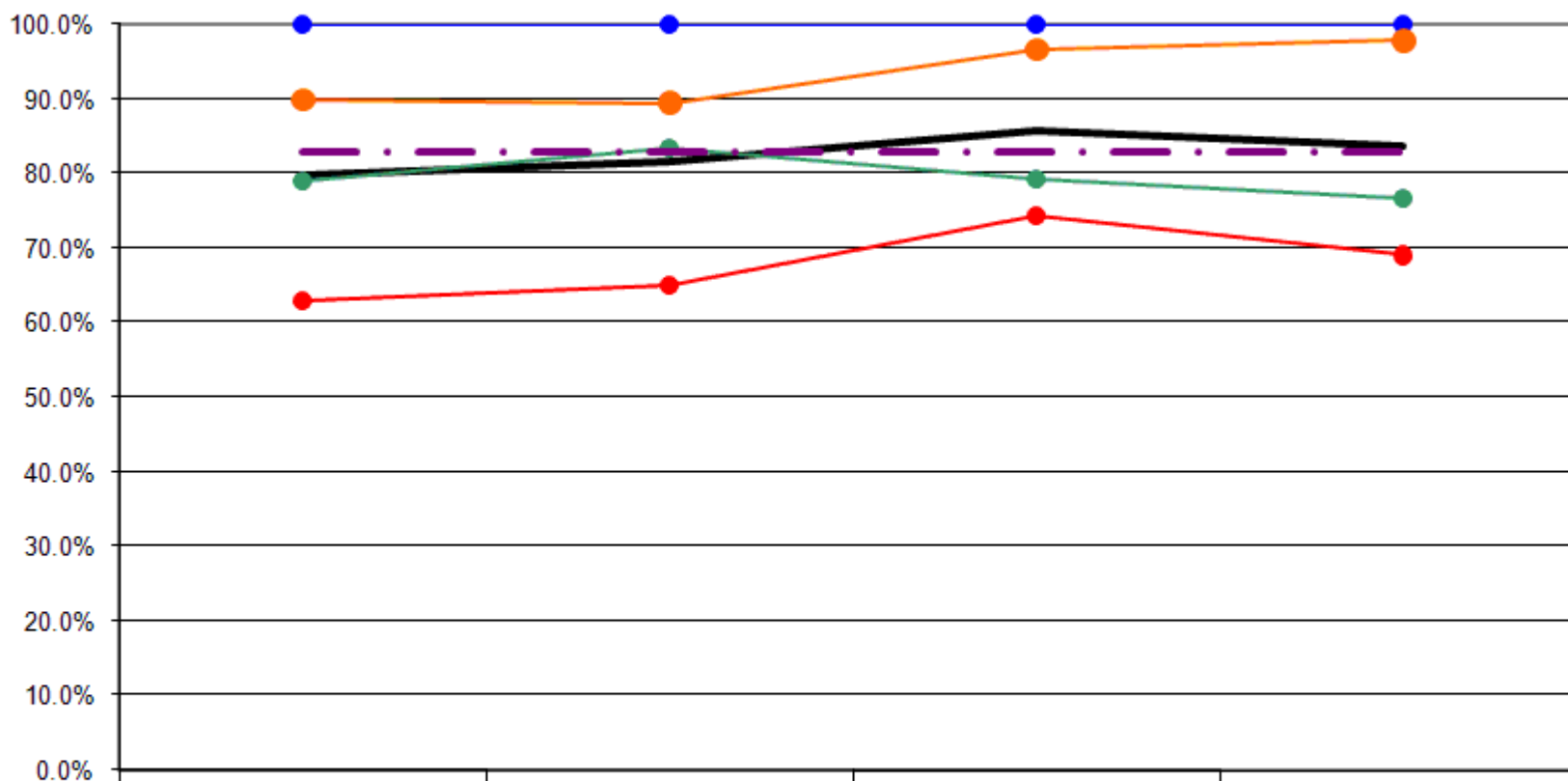


## 12 Year Review

### Have you had a pap smear within the past 3 years?

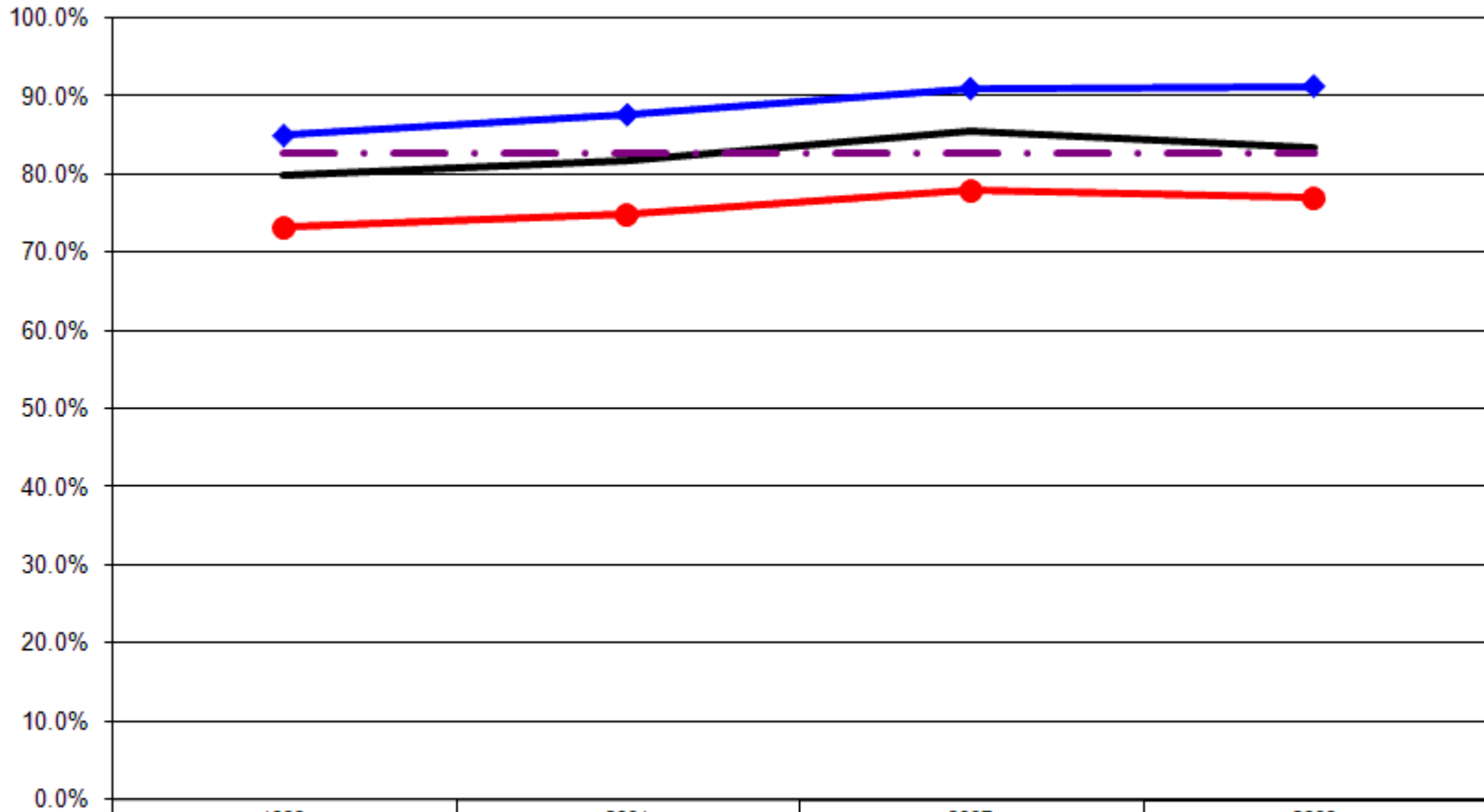
**Had Pap Smear Within Past 3 Years By Age**



	1999	2001	2007	2009
— Total	79.9%	81.8%	85.7%	83.6%
—● 18-24	100.0%	100.0%	100.0%	100.0%
—● 25-44	89.8%	89.4%	96.7%	97.9%
—● 45-64	78.8%	83.3%	79.1%	76.6%
—● 65+	63.1%	65.0%	74.3%	69.1%
- - - US Total Rate*				82.8%

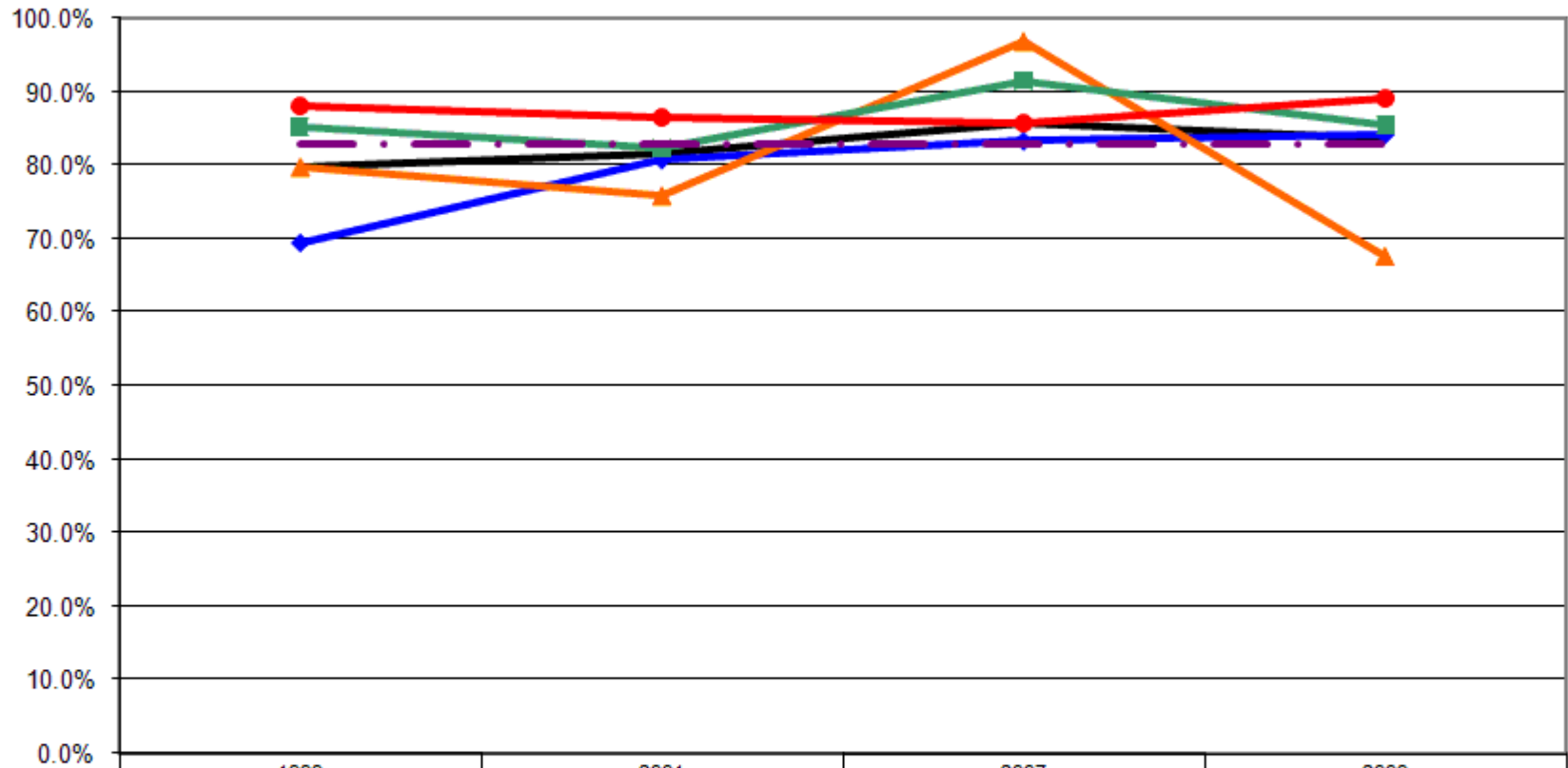
\*Source: 2008 CDC BRFSS

### Had Pap Smear Within Past 3 Years By Employment Status



\*Source: 2008 CDC BRFSS

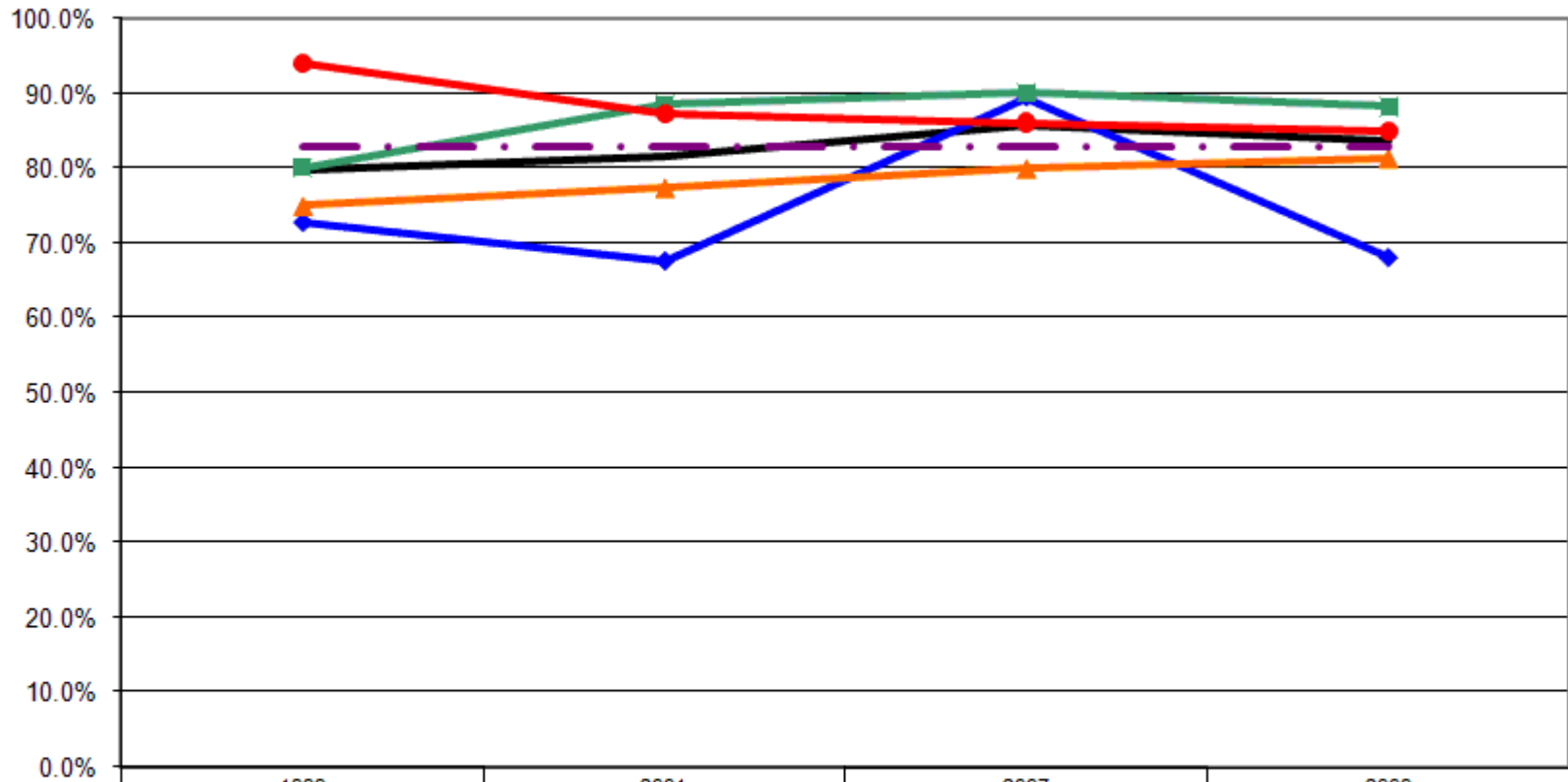
### Had Pap Smear Within Past 3 Years By Income



	1999	2001	2007	2009
— Total	79.9%	81.8%	85.7%	83.6%
—◆— <\$15K	69.5%	80.8%	83.3%	84.2%
—▲— \$15-25K	79.8%	75.9%	97.0%	67.6%
—■— \$25-50K	85.3%	82.4%	91.5%	85.5%
—●— \$50K+	88.2%	86.6%	85.7%	89.2%
- - - US Total Rate*				82.8%

\*Source: 2008 CDC BRFSS

### Had Pap Smear Within Past 3 Years By Education



	1999	2001	2007	2009
— Total	79.9%	81.8%	85.7%	83.6%
—◆— <HS	72.7%	67.6%	89.5%	68.0%
—▲— HS or GED	75.0%	77.4%	80.0%	81.4%
—■— Some College	80.2%	88.5%	90.1%	88.2%
—●— College Degree +	94.1%	87.3%	86.3%	85.1%
- - - US Total Rate*				82.8%

\*Source: 2008 CDC BRFSS

Interview Year 1999

		Pap smear within the past 3 years	
		Yes	No
<b>Total</b>		<b>79.9%</b>	<b>20.1%</b>
Age	18 - 24	100.0%	0.0%
	25 - 34	94.9%	5.1%
	35 - 44	85.5%	14.5%
	45 - 54	87.5%	12.5%
	55 - 64	69.5%	30.5%
	65+	62.0%	38.0%
Employed	Yes	85.1%	14.9%
	No	73.3%	26.7%
Income	< \$15K	69.5%	30.5%
	\$15-25K	79.8%	20.2%
	\$25-50K	85.3%	14.7%
	\$50K +	88.2%	11.8%
Education	Less than High School	72.7%	27.3%
	High School Diploma or GED	75.0%	25.0%
	Some College/Technical	80.2%	19.8%
	College Degree or Higher	94.1%	5.9%

Interview Year 2001

		Pap smear within the past 3 years	
		Yes	No
<b>Total</b>		<b>81.8%</b>	<b>18.2%</b>
Age	18 - 24	100.0%	0.0%
	25 - 34	92.2%	7.8%
	35 - 44	87.7%	12.3%
	45 - 54	85.5%	14.5%
	55 - 64	80.0%	20.0%
	65+	65.0%	35.0%
Employed	Yes	87.7%	12.3%
	No	74.8%	25.2%
Income	< \$15K	80.8%	19.2%
	\$15-25K	75.9%	24.1%
	\$25-50K	82.4%	17.6%
	\$50K +	86.6%	13.4%
Education	Less than High School	67.6%	32.4%
	High School Diploma or GED	77.4%	22.6%
	Some College/Technical	88.5%	11.5%
	College Degree or Higher	87.3%	12.7%

Interview Year 2007

		Pap smear within the past 3 years	
		Yes	No
<b>Total</b>		<b>85.7%</b>	<b>14.3%</b>
Age	18 - 24	100.0%	0.0%
	25 - 34	96.6%	3.4%
	35 - 44	96.8%	3.2%
	45 - 54	82.8%	17.2%
	55 - 64	73.9%	26.1%
	65+	74.3%	25.7%
Employed	Yes	91.0%	9.0%
	No	78.0%	22.0%
Income	< \$15K	83.3%	16.7%
	\$15-25K	97.0%	3.0%
	\$25-50K	91.5%	8.5%
	\$50K +	85.7%	14.3%
Education	Less than High School	89.5%	10.5%
	High School Diploma or GED	80.0%	20.0%
	Some College/Technical	90.1%	9.9%
	College Degree or Higher	86.3%	13.8%

Interview Year 2009

		Pap smear within the past 3 years	
		Yes	No
<b>Total</b>		<b>83.6%</b>	<b>16.4%</b>
Age	18 - 24	100.0%	0.0%
	25 - 34	98.3%	1.7%
	35 - 44	97.3%	2.7%
	45 - 54	71.2%	28.8%
	55 - 64	83.3%	16.7%
	65+	69.1%	30.9%
Employed	Yes	91.3%	8.7%
	No	77.0%	23.0%
Income	< \$15K	84.2%	15.8%
	\$15-25K	67.6%	32.4%
	\$25-50K	85.5%	14.5%
	\$50K +	89.2%	10.8%
Education	Less than High School	68.0%	32.0%
	High School Diploma or GED	81.4%	18.6%
	Some College/Technical	88.2%	11.8%
	College Degree or Higher	85.1%	14.9%

			Pap smear within the past 3 years	
			Yes	No
Age	1999	18 - 24	100.0%	0.0%
		25 - 34	94.9%	5.1%
		35 - 44	85.5%	14.5%
		45 - 54	87.5%	12.5%
		55 - 64	69.5%	30.5%
		65+	62.0%	38.0%
	2001	18 - 24	100.0%	0.0%
		25 - 34	92.2%	7.8%
		35 - 44	87.7%	12.3%
		45 - 54	85.5%	14.5%
		55 - 64	80.0%	20.0%
		65+	65.0%	35.0%
	2007	18 - 24	100.0%	0.0%
		25 - 34	96.6%	3.4%
		35 - 44	96.8%	3.2%
		45 - 54	82.8%	17.2%
		55 - 64	73.9%	26.1%
		65+	74.3%	25.7%
2009	18 - 24	100.0%	0.0%	
	25 - 34	98.3%	1.7%	
	35 - 44	97.3%	2.7%	
	45 - 54	71.2%	28.8%	
	55 - 64	83.3%	16.7%	
	65+	69.1%	30.9%	

			Pap smear within the past 3 years	
			Yes	No
Employment Status	1999	Employed	85.1%	14.9%
		Not Employed	73.3%	26.7%
	2001	Employed	87.7%	12.3%
		Not Employed	74.8%	25.2%
	2007	Employed	91.0%	9.0%
		Not Employed	78.0%	22.0%
	2009	Employed	91.3%	8.7%
		Not Employed	77.0%	23.0%

			Pap smear within the past 3 years	
			Yes	No
Income Level	1999	< \$15K	69.5%	30.5%
		\$15-25K	79.8%	20.2%
		\$25-50K	85.3%	14.7%
		\$50K +	88.2%	11.8%
	2001	< \$15K	80.8%	19.2%
		\$15-25K	75.9%	24.1%
		\$25-50K	82.4%	17.6%
		\$50K +	86.6%	13.4%
	2007	< \$15K	83.3%	16.7%
		\$15-25K	97.0%	3.0%
		\$25-50K	91.5%	8.5%
		\$50K +	85.7%	14.3%
	2009	< \$15K	84.2%	15.8%
		\$15-25K	67.6%	32.4%
		\$25-50K	85.5%	14.5%
		\$50K +	89.2%	10.8%

			Pap smear within the past 3 years	
			Yes	No
Education Level	1999	Less than High School	72.7%	27.3%
		High School Diploma or GED	75.0%	25.0%
		Some College/Technical	80.2%	19.8%
		College Degree or Higher	94.1%	5.9%
	2001	Less than High School	67.6%	32.4%
		High School Diploma or GED	77.4%	22.6%
		Some College/Technical	88.5%	11.5%
		College Degree or Higher	87.3%	12.7%
	2007	Less than High School	89.5%	10.5%
		High School Diploma or GED	80.0%	20.0%
		Some College/Technical	90.1%	9.9%
		College Degree or Higher	86.3%	13.8%
	2009	Less than High School	68.0%	32.0%
		High School Diploma or GED	81.4%	18.6%
		Some College/Technical	88.2%	11.8%
		College Degree or Higher	85.1%	14.9%