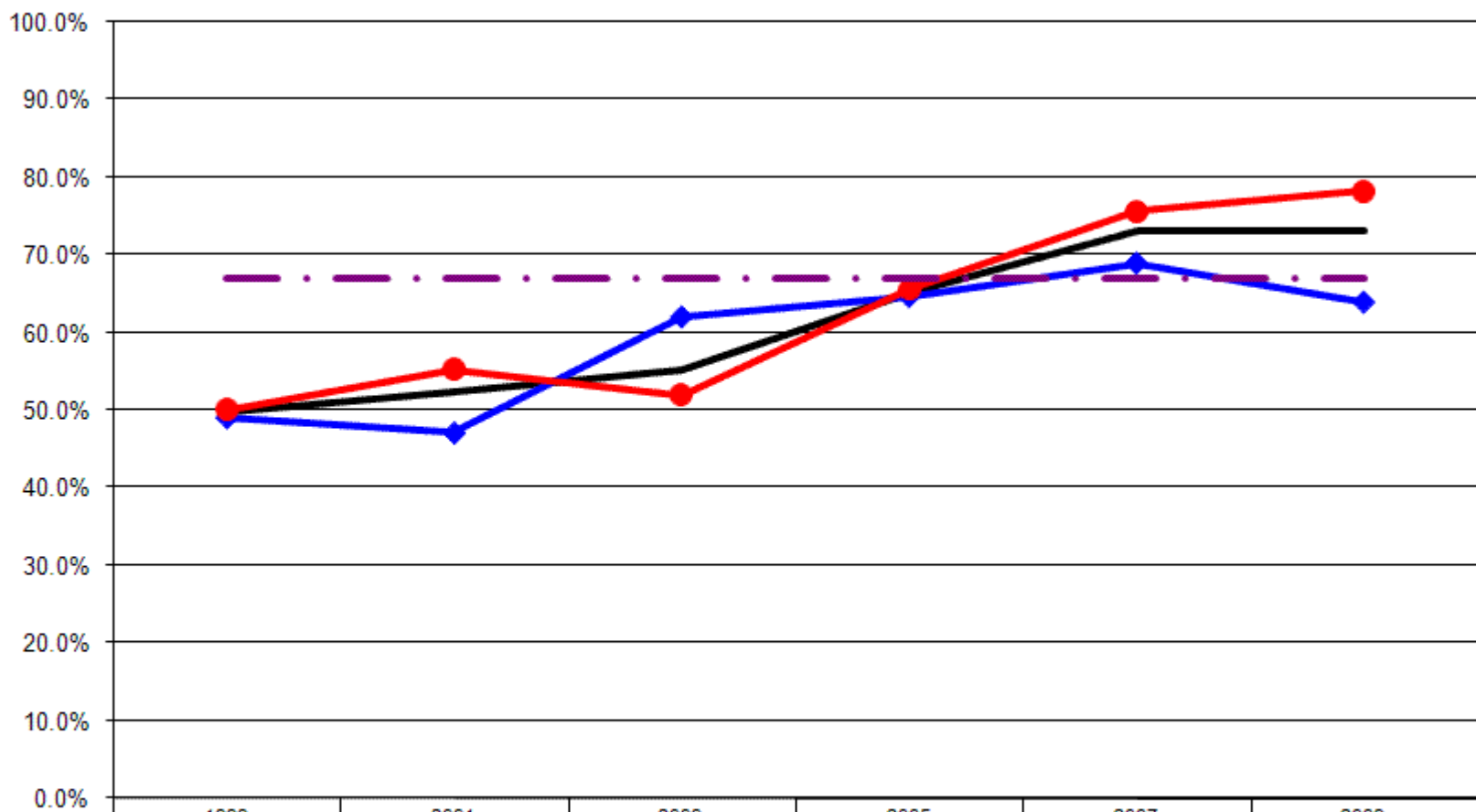


12 Year Review Adults 65+ Who Ever Had Pneumonia Vaccination

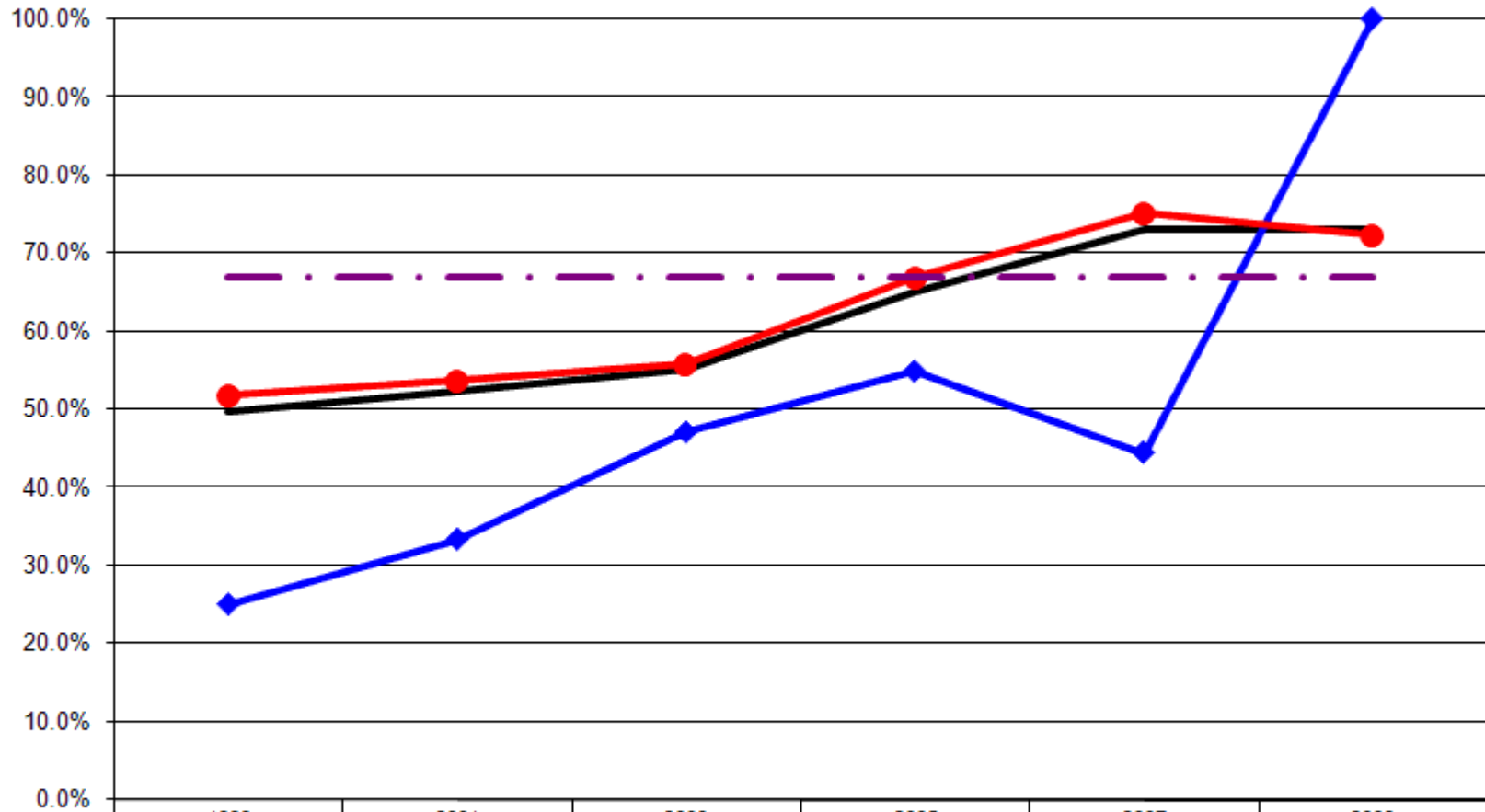
Adults 65+ Who Ever Had Pneumonia Vaccination By Gender



	1999	2001	2003	2005	2007	2009
— Total	49.7%	52.2%	55.2%	65.2%	73.2%	73.1%
—◆ Male	49.1%	47.1%	62.0%	64.6%	68.9%	63.9%
—● Female	50.0%	55.3%	51.9%	65.5%	75.6%	78.2%
-.-.- US Total Rate*						66.9%

*Source: 2008 CDC BRFSS

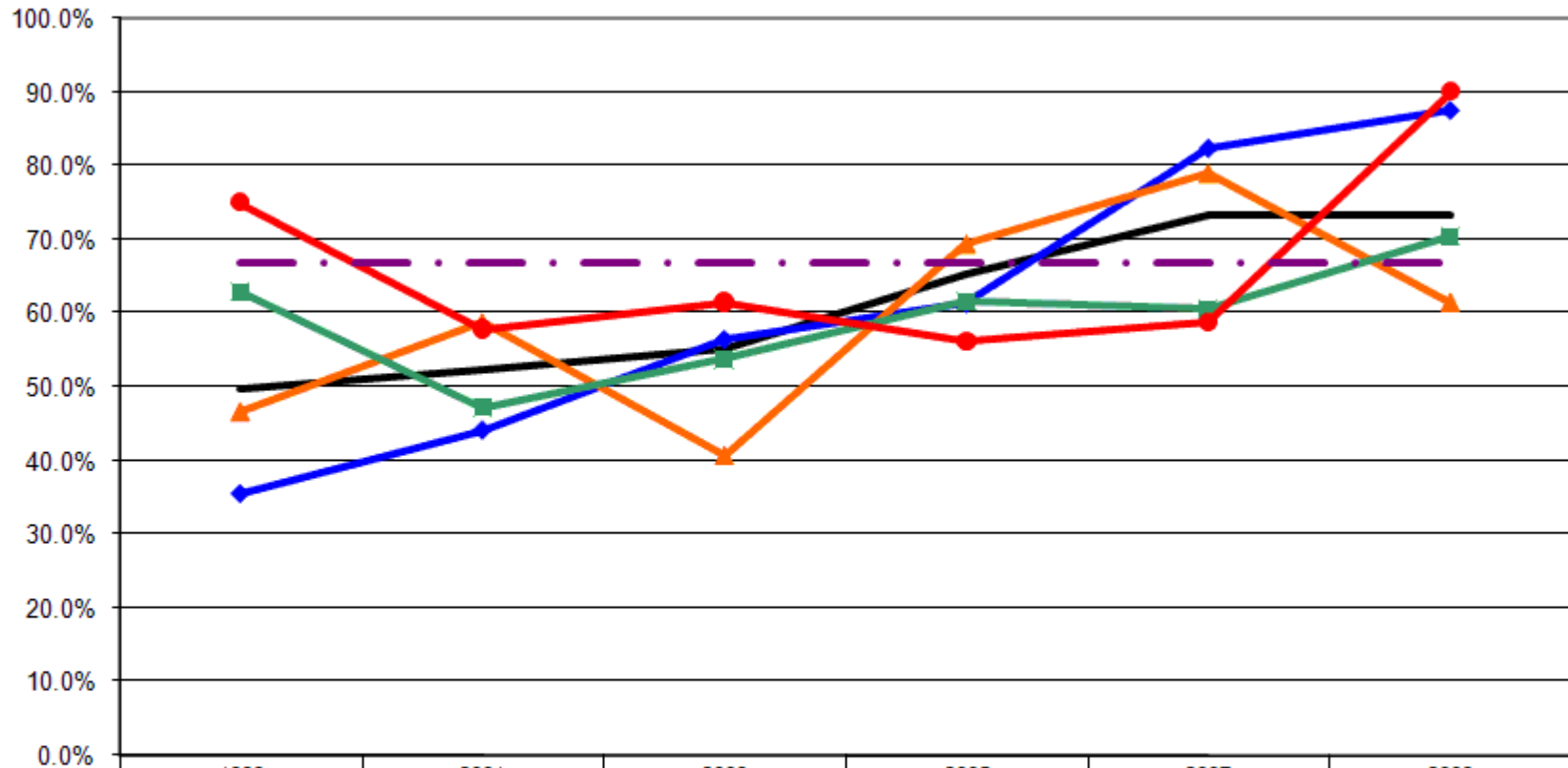
Adults 65+ Who Ever Had Pneumonia Vaccination By Employment Status



	1999	2001	2003	2005	2007	2009
— Total	49.7%	52.2%	55.2%	65.2%	73.2%	73.1%
—◆— Employed	25.0%	33.3%	47.1%	54.8%	44.4%	100.0%
—●— Not Employed	51.9%	53.8%	55.9%	66.9%	75.2%	72.5%
-.-.- US Total Rate*						66.9%

*Source: 2008 CDC BRFSS

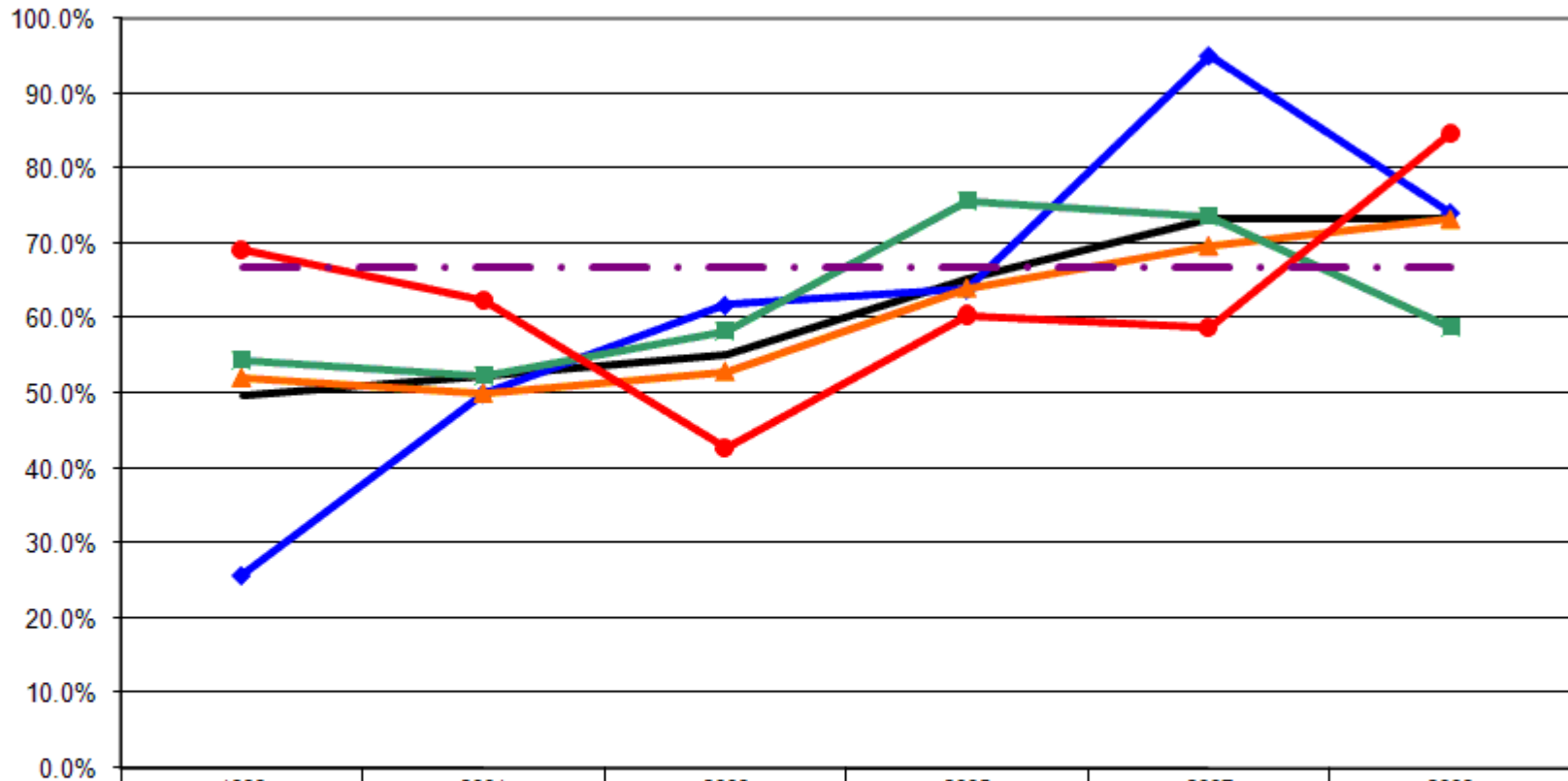
Adults 65+ Who Ever Had Pneumonia Vaccination By Income



	1999	2001	2003	2005	2007	2009
— Total	49.7%	52.2%	55.2%	65.2%	73.2%	73.1%
—◆— <\$15K	35.5%	44.1%	56.4%	61.3%	82.4%	87.5%
—▲— \$15-25K	46.7%	58.7%	40.7%	69.4%	78.9%	61.5%
—■— \$25-50K	63.0%	47.3%	53.8%	61.7%	60.5%	70.4%
—●— \$50K+	75.0%	57.9%	61.5%	56.3%	58.8%	90.0%
-.-.- US Total Rate*						66.9%

*Source: 2008 CDC BRFSS

Adults 65+ Who Ever Had Pneumonia Vaccination By Education



	1999	2001	2003	2005	2007	2009
— Total	49.7%	52.2%	55.2%	65.2%	73.2%	73.1%
—◆— <HS	25.8%	50.0%	61.8%	63.9%	95.0%	74.1%
—▲— HS or GED	52.1%	50.0%	52.9%	64.0%	69.6%	73.2%
—■— Some College	54.4%	52.4%	58.3%	75.6%	73.5%	58.8%
—●— College Degree +	69.2%	62.5%	42.9%	60.5%	58.8%	84.6%
-.-.- US Total Rate*						66.9%

*Source: 2008 CDC BRFSS

Interview Year 1999

		Have you ever had a pneumonia vaccination?	
		Yes	No
Total		49.7%	50.3%
Gender	Male	49.1%	50.9%
	Female	50.0%	50.0%
Age	65+	49.7%	50.3%
Employed	Yes	25.0%	75.0%
	No	51.9%	48.1%
Income	< \$15K	35.5%	64.5%
	\$15-25K	46.7%	53.3%
	\$25-50K	63.0%	37.0%
	\$50K +	75.0%	25.0%
Education	Less than High School	25.8%	74.2%
	High School Diploma or GED	52.1%	47.9%
	Some College/Technical	54.4%	45.6%
	College Degree or Higher	69.2%	30.8%

Interview Year 2001

		Have you ever had a pneumonia vaccination?	
		Yes	No
Total		52.2%	47.8%
Gender	Male	47.1%	52.9%
	Female	55.3%	44.7%
Age	65+	52.2%	47.8%
Employed	Yes	33.3%	66.7%
	No	53.8%	46.2%
Income	< \$15K	44.1%	55.9%
	\$15-25K	58.7%	41.3%
	\$25-50K	47.3%	52.7%
	\$50K +	57.9%	42.1%
Education	Less than High School	50.0%	50.0%
	High School Diploma or GED	50.0%	50.0%
	Some College/Technical	52.4%	47.6%
	College Degree or Higher	62.5%	37.5%

Interview Year 2003

		Have you ever had a pneumonia vaccination?	
		Yes	No
Total		55.2%	44.8%
Gender	Male	62.0%	38.0%
	Female	51.9%	48.1%
Age	65+	55.2%	44.8%
Employed	Yes	47.1%	52.9%
	No	55.9%	44.1%
Income	< \$15K	56.4%	43.6%
	\$15-25K	40.7%	59.3%
	\$25-50K	53.8%	46.2%
	\$50K +	61.5%	38.5%
Education	Less than High School	61.8%	38.2%
	High School Diploma or GED	52.9%	47.1%
	Some College/Technical	58.3%	41.7%
	College Degree or Higher	42.9%	57.1%

Interview Year 2005

		Have you ever had a pneumonia vaccination?	
		Yes	No
Total		65.2%	34.8%
Gender	Male	64.6%	35.4%
	Female	65.5%	34.5%
Age	65+	65.2%	34.8%
Employed	Yes	54.8%	45.2%
	No	66.9%	33.1%
Income	< \$15K	61.3%	38.7%
	\$15-25K	69.4%	30.6%
	\$25-50K	61.7%	38.3%
	\$50K +	56.3%	43.8%
Education	Less than High School	63.9%	36.1%
	High School Diploma or GED	64.0%	36.0%
	Some College/Technical	75.6%	24.4%
	College Degree or Higher	60.5%	39.5%

Interview Year 2007

		Have you ever had a pneumonia vaccination?	
		Yes	No
Total		73.2%	26.8%
Gender	Male	68.9%	31.1%
	Female	75.6%	24.4%
Age	65+	73.2%	26.8%
Employed	Yes	44.4%	55.6%
	No	75.2%	24.8%
Income	< \$15K	82.4%	17.6%
	\$15-25K	78.9%	21.1%
	\$25-50K	60.5%	39.5%
	\$50K +	58.8%	41.2%
Education	Less than High School	95.0%	5.0%
	High School Diploma or GED	69.6%	30.4%
	Some College/Technical	73.5%	26.5%
	College Degree or Higher	58.8%	41.2%

Interview Year 2009

		Have you ever had a pneumonia vaccination?	
		Yes	No
Total		73.1%	26.9%
Gender	Male	63.9%	36.1%
	Female	78.2%	21.8%
Age	65+	73.1%	26.9%
Employed	Yes	100.0%	0.0%
	No	72.5%	27.5%
Income	< \$15K	87.5%	12.5%
	\$15-25K	61.5%	38.5%
	\$25-50K	70.4%	29.6%
	\$50K +	90.0%	10.0%
Education	Less than High School	74.1%	25.9%
	High School Diploma or GED	73.2%	26.8%
	Some College/Technical	58.8%	41.2%
	College Degree or Higher	84.6%	15.4%

			Have you ever had a pneumonia vaccination?	
			Yes	No
Gender	1999	Male	49.1%	50.9%
		Female	50.0%	50.0%
	2001	Male	47.1%	52.9%
		Female	55.3%	44.7%
	2003	Male	62.0%	38.0%
		Female	51.9%	48.1%
	2005	Male	64.6%	35.4%
		Female	65.5%	34.5%
	2007	Male	68.9%	31.1%
		Female	75.6%	24.4%
	2009	Male	63.9%	36.1%
		Female	78.2%	21.8%

			Have you ever had a pneumonia vaccination?	
			Yes	No
Employment Status	1999	Employed	25.0%	75.0%
		Not Employed	51.9%	48.1%
	2001	Employed	33.3%	66.7%
		Not Employed	53.8%	46.2%
	2003	Employed	47.1%	52.9%
		Not Employed	55.9%	44.1%
	2005	Employed	54.8%	45.2%
		Not Employed	66.9%	33.1%
	2007	Employed	44.4%	55.6%
		Not Employed	75.2%	24.8%
	2009	Employed	100.0%	0.0%
		Not Employed	72.5%	27.5%

			Have you ever had a pneumonia vaccination?	
			Yes	No
Income Level	1999	< \$15K	35.5%	64.5%
		\$15-25K	46.7%	53.3%
		\$25-50K	63.0%	37.0%
		\$50K +	75.0%	25.0%
	2001	< \$15K	44.1%	55.9%
		\$15-25K	58.7%	41.3%
		\$25-50K	47.3%	52.7%
		\$50K +	57.9%	42.1%
	2003	< \$15K	56.4%	43.6%
		\$15-25K	40.7%	59.3%
		\$25-50K	53.8%	46.2%
		\$50K +	61.5%	38.5%
	2005	< \$15K	61.3%	38.7%
		\$15-25K	69.4%	30.6%
		\$25-50K	61.7%	38.3%
		\$50K +	56.3%	43.8%
	2007	< \$15K	82.4%	17.6%
		\$15-25K	78.9%	21.1%
		\$25-50K	60.5%	39.5%
		\$50K +	58.8%	41.2%
2009	< \$15K	87.5%	12.5%	
	\$15-25K	61.5%	38.5%	
	\$25-50K	70.4%	29.6%	
	\$50K +	90.0%	10.0%	

			Have you ever had a pneumonia vaccination?	
			Yes	No
Education Level	1999	Less than High School	25.8%	74.2%
		High School Diploma or GED	52.1%	47.9%
		Some College/Technical	54.4%	45.6%
		College Degree or Higher	69.2%	30.8%
	2001	Less than High School	50.0%	50.0%
		High School Diploma or GED	50.0%	50.0%
		Some College/Technical	52.4%	47.6%
		College Degree or Higher	62.5%	37.5%
	2003	Less than High School	61.8%	38.2%
		High School Diploma or GED	52.9%	47.1%
		Some College/Technical	58.3%	41.7%
		College Degree or Higher	42.9%	57.1%
	2005	Less than High School	63.9%	36.1%
		High School Diploma or GED	64.0%	36.0%
		Some College/Technical	75.6%	24.4%
		College Degree or Higher	60.5%	39.5%
2007	Less than High School	95.0%	5.0%	
	High School Diploma or GED	69.6%	30.4%	
	Some College/Technical	73.5%	26.5%	
	College Degree or Higher	58.8%	41.2%	
2009	Less than High School	74.1%	25.9%	
	High School Diploma or GED	73.2%	26.8%	
	Some College/Technical	58.8%	41.2%	
	College Degree or Higher	84.6%	15.4%	